



Disaster relief emergency fund (DREF)

The Gambia: Cholera



DREF operation n° MDRGM007

13 January, 2012

The International Federation of Red Cross and Red Crescent (IFRC) Disaster Relief Emergency Fund (DREF) is a source of un-earmarked money created by the Federation in 1985 to ensure that immediate financial support is available for Red Cross and Red Crescent emergency response. The DREF is a vital part of the International Federation's disaster response system and increases the ability of National Societies to respond to disasters.

CHF 119,220 has been allocated from the IFRC's Disaster Relief Emergency Fund (DREF) to support the Gambia Red Cross Society in delivering immediate assistance to some 30,000 persons travelling in and out of Senegal. Unearmarked funds to repay DREF are encouraged.

Summary: The Government of the Gambia, through the Ministry of Health and Social Welfare, sent out a press release on 6th January 2012 through the media on the current situation of the cholera outbreak in neighbouring Senegal, where 10 cases are said to have been confirmed. The Ministry warned those travelling to Senegal for the *Magal* Muslim feast in the Senegalese town of Touba to take note of the cholera outbreak and to take preventive measures.

The feast, commencing on 12 January 2012, attracts tens of thousands of people. Food and water during the period are taken at common public places, and this practice will increase the risk of contraction and spread of the disease among the population. The release also put a very strong advice on drinking clean water and eating well-cooked food. Secondly, the Gambia is surrounded by Senegal and people move in and out of the country daily. The Gambia will therefore be exposed to high risk of cholera outbreak, particularly as pilgrims return from Senegal.

Meanwhile, preparing the nation for any eventuality of cholera spread, the Ministry invited stakeholders for a meeting on 6 January, which focused on preparedness, prevention, and response. The actions identified at the meeting included installation of a surveillance system for all border crossing points and the weekly market, along with sensitization, preparedness and response activities.

To support the efforts of the government in addressing prevention and averting the possibility of an imminent crisis, the National Society, through this DREF operation, plans the following strategies:

1. Coordination with Government of the Gambia and the Senegalese Red Cross Society monitoring and responding as the diseases directs.
2. Sensitization of the general public on cholera, personal hygiene and hand washing.
3. Distribution of detergent soaps and clean drinking water.
4. Support the government of the Gambia on a surveillance system and transportation of any suspected case at border points and open markets to the nearest health facility.

This operation is expected to be implemented over 3 months, and will therefore be completed by April 2012. A Final Report will be made available three months after the end of the operation (by July, 2012).

[<click here for the DREF budget; here for contact details; here to view a map of the affected area>](#)

The situation

The Ministry of Health and partners indicated the need to have various measures and preparedness to respond to any case of cholera and advised the general public to take precautionary measures. The Ministry also called on people to work together to prevent the incoming of cholera and its spread in the country.

The feast of *Magal* will witness the movement of people from the Gambia, Bissau, Conakry, Mali, and Mauritania into Touba in Senegal. This plus other regular travelers will increase the risk of contraction and spread of this contagious disease if urgent action is not taken. Among these countries mentioned above, Gambia is the only country whose gateway is Senegal, except for Gambia's airport and seaport. This makes the Gambia a very high risk country in terms of the spread of the disease.

Coordination and partnerships

Following the pronouncement of the cholera outbreak in Senegal, the Ministry of Health called a meeting with partners to strategize ways and means to prevent the spread of the disease. Various strategies were identified for intervention, including; surveillance, sensitization, preparedness and response. Government will continue to spearhead the coordination of all stakeholders' interventions to avoid duplication and harmonization of the various interventions.

Red Cross and Red Crescent action

The Gambia Red Cross Society (GRCS) has engaged the Ministry of Health on the way forward to prevent and response to the cholera outbreak in Senegal. At present, the National Society has informed all its regional branches to be on standby and mobilize volunteers for any eventuality. Furthermore, the National Society will use its 500 preposition stock of soap for distribution to people intending to travel to Senegal for the performance of the *Magal*. GRCS has also sent an alert through DMIS. The Ministry is also looking forward to the good participation of the National Society in the massive sensitization of the population intending to perform *Magal* and public weekly markets in border villages.

The needs

Selection of people to be reached: Following the meeting at the ministry of health, below are the needs identified among them are sensitisation, surveillance, preparedness and response. As a result, the National Society will focus on sensitizations, surveillance and response.

The proposed operation

Water, Sanitation and Hygiene Promotion
Outcome: Improve health by the provision of adequate hygiene promotion interventions in strategic locations
Outputs 1: Immediate reduction of cholera in 87 strategic locations.
Activities planned: <ul style="list-style-type: none">• Procure 60,000 pieces of soap and evenly distribute them to the seven regional Red Cross Branches.• Distribute 2 pieces of soap per person for improved personal hygiene.• Provide adequate materials for sufficient hand washing points in each of the identified strategic points.
Output 2: Improves people's knowledge on border crossing points, open markets and border communities on cholera prevention and well as response to any suspected cholera case
Activities planned: <ul style="list-style-type: none">• Conduct 4 decentralized training for identified NDRTs and CDRTs who will carry out the cholera sensitisation activities.• Adapt existing cholera message from the ministry of health for sensitization at strategic locations including border points.• Pasting existing cholera posters developed by the Ministry of Health to sensitize people on the outbreak of the cholera.• Conduct hygiene promotion and proper hand washing sensitization activities in border crossing points and open markets.

- Station volunteers in 15 busy border crossing points, 20 open markets and 25 border communities to sensitize people on cholera prevention and early detection of cholera.
- Response by transferring any suspected cholera case to the nearest health facility.

Output 3: To contribute to the improvement of access to clean water, hygiene and sanitation facilities for 30,000 persons.

Activities Planned:

- Procure 30,000 water bottles and distribute among moving population into Senegal to attend the feast.
- Procure and use 348 buckets, 870 hand towels, and 348 kettles for proper hand washing.

Contact information

For further information specifically related to this operation please contact:

- **IFRC Regional Representation:** Momodou Lamin Fye, Regional Representative ,Dakar phone:(Office) +221.33.869.36.41; (Mobile) +221.77.332.56.72; email: momodoulamin.fye@ifrc.org Per Becker, Regional Disaster Risk Management Coordinator phone:(Office) +221.33.869.36.68; (Mobile) +221.77.638.21.36; email: per.becker@ifrc.org
- **IFRC Zone:** Dr Adinoyi Ben Adeiza, Zone Emergency Health; phone +27834526397; +2347038842655 adinoyi.adeiza@ifrc.org
- **In Geneva: Christine** South, Operations Support, Phone: +41.22.730.4529, email: christine.south@ifrc.org
- **Regional Logistics Unit (RLU):** Kai Kettunen, Regional Logistics Delegate Dubai, phone +971.4.883.38.87 Mobile +971.50.458.48.72, Fax +971.4.883.22.12, email: kai.kettunen@ifrc.org

For Resource Mobilization and Pledges:

- **In IFRC Zone:** Pierre Kremer, Acting Head of Resource Mobilization, phone: +41.792 26.48.32; email: pierre.kremer@ifrc.org;

For Performance and Accountability (planning, monitoring, evaluation and reporting)

- **IFRC Zone:** Robert Ondrusek, PMER/QA Delegate, Africa phone: +254 731 067277; email: robert.ondrusek@ifrc.org



Click here

1. DREF budget **[below](#)**
2. Click **[here](#)** to return to the title page

How we work

All IFRC assistance seeks to adhere to the Code of Conduct for the International Red Cross and Red Crescent Movement and Non-Governmental Organizations (NGOs) in Disaster Relief and the Humanitarian Charter and Minimum Standards in Humanitarian Response (Sphere) in delivering assistance to the most vulnerable.

The IFRC's vision is to inspire, encourage, facilitate and promote at all times all forms of humanitarian activities by National Societies, with a view to preventing and alleviating human suffering, and thereby contributing to the maintenance and promotion of human dignity and peace in the world.

www.ifrc.org
Saving lives, changing minds.



The IFRC's work is guided by Strategy 2020 which puts forward three strategic aims:

- 1.** Save lives, protect livelihoods, and strengthen recovery from disaster and crises.
- 2.** Enable healthy and safe living.
- 3.** Promote social inclusion and a culture of non-violence and peace.

DREF OPERATION

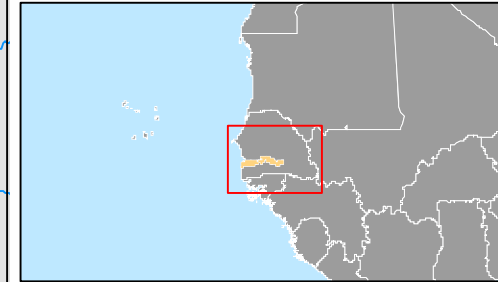
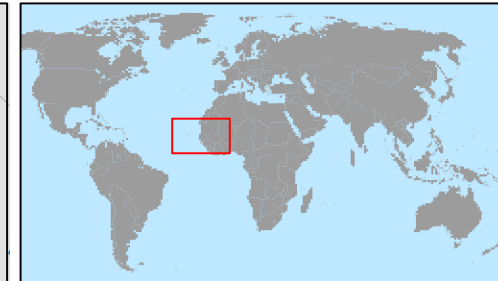
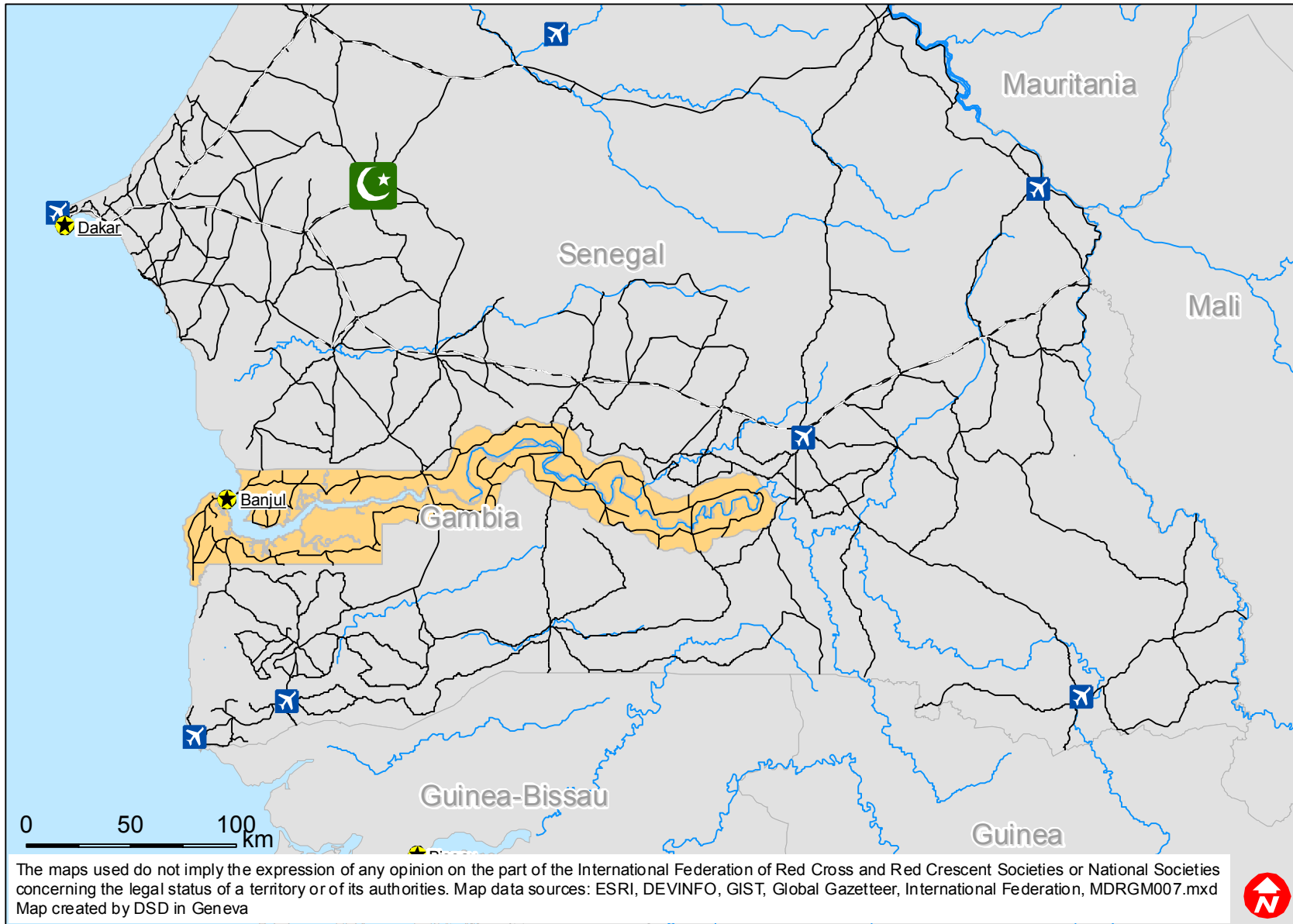
13-01-12



The Gambia: Cholera (MDRGM007)

Budget Group	DREF Grant Budget CHF
Shelter - Relief	
Shelter - Transitional	
Construction - Housing	
Construction - Facilities	
Construction - Materials	
Clothing & Textiles	
Food	
Seeds & Plants	
Water, Sanitation & Hygiene	29,250
Medical & First Aid	
Teaching Materials	
Utensils & Tools	2,018
Other Supplies & Services	28,350
Emergency Response Units	
Cash Disbursements	
Total RELIEF ITEMS, CONSTRUCTION AND SUPPLIES	59,618
Land & Buildings	
Vehicles Purchase	
Computer & Telecom Equipment	
Office/Household Furniture & Equipment	
Medical Equipment	
Other Machinery & Equipment	
Total LAND, VEHICLES AND EQUIPMENT	0
Storage, Warehousing	
Distribution & Monitoring	
Transport & Vehicle Costs	3,432
Logistics Services	
Total LOGISTICS, TRANSPORT AND STORAGE	3,432
International Staff	
National Staff	
National Society Staff	750
Volunteers	27,270
Total PERSONNEL	28,020
Consultants	
Professional Fees	
Total CONSULTANTS & PROFESSIONAL FEES	0
Workshops & Training	13,440
Total WORKSHOP & TRAINING	13,440
Travel	
Information & Public Relations	1,050
Office Costs	2,250
Communications	1,500
Financial Charges	1,000
Other General Expenses	1,633
Shared Support Services	
Total GENERAL EXPENDITURES	7,433
Programme and Supplementary Services Recovery	7,276
Total INDIRECT COSTS	7,276
TOTAL BUDGET	119,220



Gambia: Imminent crisis: Cholera



-  Muslim feast MAGAL in Touba
-  Main roads

The maps used do not imply the expression of any opinion on the part of the International Federation of Red Cross and Red Crescent Societies or National Societies concerning the legal status of a territory or of its authorities. Map data sources: ESRI, DEVINFO, GIST, Global Gazetteer, International Federation, MDRGM007.mxd
 Map created by DSD in Geneva

