

Information bulletin



International Federation
of Red Cross and Red Crescent Societies

Mexico: Hurricane Dolly

Information bulletin n° 1
GLIDE TC-2008-000111-Mex
23 July 2008

This bulletin is being issued for information only. On 20 July, Tropical Storm Dolly formed in the western Caribbean Sea. On 21 July, it passed the Yucatan Peninsula and moved into the Gulf of Mexico. Dolly is now a category 2 hurricane (winds 160 km/h). The eye will cross the coast near the Texas/Mexico border in a few hours. Dolly strengthened as its leading edge lashed the Gulf Coast near the Texas-Mexico border with heavy rains and powerful winds. Forecasters predict that Dolly will dump up to 15 inches of rain and bring coastal storm surge flooding of 4 to 6 feet above normal high tide levels.

The Mexican Red Cross, with the support of the Federation, has determined that external assistance is not required, and is therefore not seeking funding or other assistance from donors at this time.

[<click here for detailed contact information>](#)



A resident boards up his restaurant at Bagdad beach, some 38 km (24 miles) from the border city of Matamoros, July 22, 2008. Dolly was upgraded to the Atlantic season's second hurricane late Tuesday as it strengthened in the warm waters of the western Gulf of Mexico on its way towards the Texas-Mexico border. REUTERS.

The Situation

Dolly is now a category 2 hurricane, with winds of 160 km/hour since strengthening over the warm waters of the Gulf of Mexico. The hurricane changed route and is now heading northwest and will reach land near the Texas-Mexico border near the city of Matamoros. The hurricane is already producing rains, high winds and large waves along the coast of Tamaulipas, Mexico and in the state of Texas in the United States. There are still occasional rains in the Yucatan peninsula, and, due to Dolly's wide reach, meteorological reports forecast increased cloudiness and possibility of heavy to intense rains mainly in the north, east, and central Tamaulipas; central and south Veracruz; central and east San Luis Potosí; central and east Nuevo León; and central Coahuila.

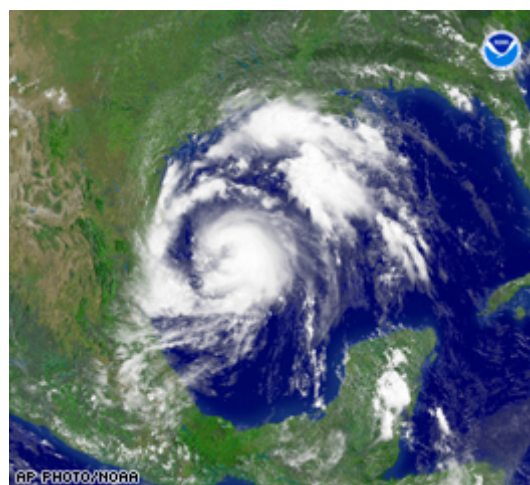
Chiapas Civil Defense attributed 40 landslides to Dolly, which left several communities isolated in seven municipalities and damaged the Southern Border Road. In Quintana Roo, the Mexican Army has evacuated more than 2,000 people. At least six temporary shelters were opened to house 3,800 people who are at risk.

Red Cross and Red Crescent action

The Mexican Red Cross is currently monitoring the storm at the National Operations Center and holding regular meetings with the Inter-institutional Group for Tropical Cyclones that is part of the Civil Protection General Coordination of the Government Secretariat. Additional civil society alerts are being broadcast and the Rapid National Intervention Unit (Unidad Nacional de Intervención Rápida – UNIR) has been activated. 50 volunteers, seven vehicles, and an evaluation team are in the field together with the Mexican Red Cross National Relief Coordinator.

On 23 July, the Mexican authorities began the evacuation phase with the assistance of the army and marines. It is anticipated that 23,000 people may be evacuated in the state of Tamaulipas.

The International Federation, through the Pan American Disaster Response Unit and in coordination with the Regional Representation Office for Central America and Mexico, has established contact with the Mexican Red Cross and is currently monitoring the development of the hurricane. Future actions are being evaluated with three Disaster Management experts from the International Federation who are currently carrying out recovery activities in field as part of the relief operation for the floods in the state of Tabasco. In preparation for the emergency, a water and sanitation expert has been deployed to Mexico City, to be mobilized to the affected area.



Hurricane Dolly is currently a Category 2 Hurricane and will possibly lead to the evacuation of 23,000 people in the state of Tamaulipas. Source: NOAA

How we work

All International Federation assistance seeks to adhere to the [Code of Conduct for the International Red Cross and Red Crescent Movement and Non-Governmental Organizations \(NGO's\) in Disaster Relief](#) and is committed to the [Humanitarian Charter and Minimum Standards in Disaster Response \(Sphere\)](#) in delivering assistance to the most vulnerable.

The International Federation's activities are aligned with its Global Agenda, which sets out four broad goals to meet the Federation's mission to "improve the lives of vulnerable people by mobilizing the power of humanity".

Global Agenda Goals:

- Reduce the numbers of deaths, injuries and impact from disasters.
- Reduce the number of deaths, illnesses and impact from diseases and public health emergencies.
- Increase local community, civil society and Red Cross Red Crescent capacity to address the most urgent situations of vulnerability.
- Reduce intolerance, discrimination and social exclusion and promote respect for diversity and human dignity.

Contact information

For further information specifically related to this operation please contact:

- In Mexico: Isaac Oxenhaut Gruuzco, Relief Director, Mexican Red Cross; email: desastres@cruzrojamexicana.org.mx; phone: (52) 55 36 27 08 94.
- In Panama: Dario Alvarez, PADRU Disaster Management Coordinator; email: dario.alvarez@ifrc.org; phone: (507) 316 1001; fax: (507) 316 1082.
- In Panama: Maria Alcazar, Zone Resource Mobilization Coordinator; email: maria.alcazar@ifrc.org; phone: (507) 380 0250; fax: (507) 317 1304.
- In Geneva: Pablo Medina, Operations Coordinator for the Americas; e-mail: pablo.medina@ifrc.org; phone: (41) 22 730 4381.

[click here to return to the title page](#)