

# DREF operation



International Federation  
of Red Cross and Red Crescent Societies

## Suriname: Floods

DREF operation n° MDRSR002  
Glide n°: FL-2008-000095-SUR  
20 June 2008

The International Federation's Disaster Relief Emergency Fund (DREF) is a source of un-earmarked money created by the Federation in 1985 to ensure that immediate financial support is available for Red Cross and Red Crescent response to emergencies. The DREF is a vital part of the International Federation's disaster response system and increases the ability of national societies to respond to disasters.

**CHF 140,000 (USD 133,333 or EUR 86,048) has been allocated from the Federation's Disaster Relief Emergency Fund (DREF) to support the Suriname Red Cross (SRC) in delivering immediate assistance to some 6,500 beneficiaries. Unearmarked funds to repay DREF are encouraged.**

### Summary:

On 28 May, 2008 heavy rains prompted intense flooding primarily in the Marowijne, Lawa and Tapanahoni regions of Suriname. Initial estimates indicate that at least 1,300 households are affected. The Suriname Red Cross (SRC) is completing damage and needs assessments, and is collaborating with the government for food distributions as well as water and sanitation promotion activities for 1,300 families.

Based on the completion of damage and needs assessments, it is possible that further funding could be required to meet the needs of beneficiaries.

This operation is expected to be implemented over two months, and will therefore be completed by 19 August, 2008; a Final Report will be made available three months after the end of the operation (by 19 November, 2008).

[<click here for the DREF budget,](#)  
[here for the map,](#)  
[or here for contact details>](#)



Floods in the Southern region of Suriname.  
Source: Suriname Red Cross

## The situation

On 28 May, 2008, constant rainfall flooded several villages located on the northern part of the Marowijne River according to the Government Department for Regional Development. Two children died while the area was being evacuated as many people moved to higher grounds or to the neighbouring country of French Guyana. It is estimated that over 6,500 persons have been displaced. Rainfall increased from the onset of

the disaster, with high peaks in the weekend of 1 and 7 June 2008, leading to the overflow of the Tapanahony and Marowijne rivers and the consequent flooding of various villages and crops.

Affected Areas according to the National Coordination Centre for Disaster Management (Nationaal Coordinatie Centrum Rampenbeheersing – NCCR):

| Areas (river basins)  | Approximate Total Population | Percentage of Displaced Persons | Areas Most Affected  | Number of People Severely Affected |
|-----------------------|------------------------------|---------------------------------|--|------------------------------------|
| Upper Saramacca       | 1,937                        | 0%                              | Pusugrunu, Nyun Jacobkondre, Bigi Poika                            | 0                                  |
| Upper Suriname        | 24,138                       | 0%                              | Dyumu, Semoisi, Pikin Slee   | 0                                  |
| Coeroeni and Kabalebo | 1,415                        | 0%                              | Kwamalasamutu, Alalapadu, Sipaliwini, Lucie, Kasju, Amatopu        | 0                                  |
| Upper Marowijne       | 13,200                       | 30%                             | Langatabiki, Snesikondre, Apomatapu, Lokaloka, Nason, Sikin Tabiki | 3,960                              |
| Lawa                  | 1,365                        | 35%                             | Cottica (village), Benzdorp, Kawemhaken and surroundings           | 478                                |
| Tapanahoni            | 7,035                        | 30%                             | Tepu, Palumeu, Apetina   | 2,110                              |
|                       |                              |                                 |  |                                    |
| <b>Total</b>          | <b>49,090</b>                |                                 |  | <b>6,548</b>                       |

Suriname also experienced torrential rainfall at the beginning of May 2006, causing serious flooding throughout the country, affecting approximately 25,000-30,000 square kilometres of land and affecting 25,000 people. However, in this year's emergency the people were better prepared than in 2006. Villages located north from the Suriname River were reported flooded, and as the water receded it became clear that many crops were destroyed. The most affected areas are in the Southern region of Suriname: Tapanahoni, Lawa, upper Marowijne and Coeroeni area.

In the southern region of Suriname close to the border with French Guyana, the flood water reached levels similar to those seen in the 2006 floods. This area is still being affected by rainfall but according to the latest reports, the flood water levels are not increasing. Nevertheless, the only way to access these villages is by boat through the river. Many schools, houses, resorts and roads were reported damaged. In addition, reports indicate 30 percent of the livestock, 65 percent of crops and 90 percent of the fishing industry have been affected.

On 16 June, two weeks after the flooding started, reports indicate that flood water is receding in most parts. However, some areas remain flooded, which makes life increasingly hard for the population of those areas. The government started to carry out damage and needs assessments of the affected areas and is working closely with the Suriname Red Cross. The government announced that the drinking water is polluted and that the collection of rainwater is limited.

In addition, food shortages are starting to affect the population, due to prolonged submerged crops and the fact that fishing and hunting in many areas is no longer possible. Besides these food shortages, the specific threats identified by the NCCR are the economic consequences that include damaged tourism facilities, reduced employment opportunities, reduced supply for tourists, damaged micro- enterprises and damaged crops and artisan gold-mining facilities.

## Coordination and partnerships

Since the onset of the emergency, the government has been working with the Suriname Red Cross performing damage and needs assessments and providing transportation in order to distribute humanitarian aid to the affected regions. The Ministry of Regional Department has distributed 1,000 food parcels and will distribute an additional 1,000 in the coming week; in addition, it established six temporary shelters.

Also, some 600 Red Cross plastic sheets were distributed, through the Ministry of Regional Development. The National Disaster Organisation will be leading the coordination of this and any other upcoming emergency operations. There are other international organizations providing and supporting the SRC including PAHO among others.

## Red Cross and Red Crescent action

On 2 June, 2008, the SRC alerted two National Intervention Team (NIT) members and consequently met with the government in order to coordinate the assessments activities. The NIT teams performed rapid field assessments between the areas of Stoelmaneil and Drietabiki and informed that eight out of 14 villages were not completely under water and of those eight villages, three were abandoned since people fled to higher grounds.

The SRC is currently planning to deploy four additional NIT trained volunteers to two areas in the upper Marowijne River to perform detailed need and damage assessments.

The SRC was able to distribute 600 plastic sheets with the support of the Ministry of Regional Department, as these were not distributed during the floods in 2006.

The International Federation, through the Pan American Disaster Response Unit (PADRU) is supporting all relief activities with the Suriname Red Cross in particular through the deployment of a Disaster Management Delegate and a Regional Intervention Team (RIT) member.

## The needs

The SRC has identified the following initial needs, which are subject to revision as damage and needs assessments will be completed within the next few days:

- Distribution of food parcels to 1,300 families (the food parcels are based on supplies for two weeks and purchased locally), starting after the distributions undertaken by the government in the first two weeks.
- Water and Sanitation, and Hygiene Promotion activities to the affected communities, in cooperation with different actors such as PAHO, Ministry of Health and the Medical Mission.

### **Beneficiary selection:**

Number of beneficiaries: 1,300 families (6,500 people).

Location of beneficiaries: Upper Marowijne, Lawa, and Tapanahoni areas.

As more detailed assessments are being completed, further needs will be considered and beneficiary targeting could be adjusted.

## The proposed operation

The current Suriname Red Cross' Plan of Action (PoA) aims to respond to the needs of 1,300 affected families (6,500 people) and will be implemented over a period of two months. As further information is gathered from assessments, there may be a need to revise this plan of action, depending on needs. A Disaster Management Delegate as well as General RIT member will support the Suriname Red Cross.

### **Relief distributions (food items)**

**Objective: 1,300 families (6,500 people) will benefit from the distributions of food parcels**

Distributions are carried out according to assessment and selection criteria that identify actual needs and vulnerable groups, and are based on careful registration and a system/process that controls, monitors and

records the movement of such goods. The distributions will be carried out after the initial distributions of the government have been completed.

#### Activities planned:

- Conduct detailed emergency needs and capacity assessments.
- Develop a beneficiary targeting strategy and registration system to deliver intended assistance.
- Distribute food parcels and control supply movements from point of dispatch to end user.
- Monitor and evaluate the relief activities and report on relief distributions.
- Develop an exit strategy.

#### Water, sanitation, and hygiene promotion

**Objective: The risk of waterborne and water related diseases will be reduced through the provision of hygiene promotion activities to 1,300 families (6,500 people) in affected areas for two months.**

#### Activities planned:

- Conduct training/information programmes for Suriname Red Cross volunteers and beneficiaries, in particular regional hygiene promotion and the safe use of Water Treatment Products (e.g. chlorination tablets).

### How we work

*All International Federation assistance seeks to adhere to the [Code of Conduct for the International Red Cross and Red Crescent Movement and Non-Governmental Organizations \(NGO's\) in Disaster Relief](#) and is committed to the [Humanitarian Charter and Minimum Standards in Disaster Response \(Sphere\)](#) in delivering assistance to the most vulnerable.*

The International Federation's activities are aligned with its Global Agenda, which sets out four broad goals to meet the Federation's mission to "improve the lives of vulnerable people by mobilizing the power of humanity".

#### Global Agenda Goals:

- Reduce the numbers of deaths, injuries and impact from disasters.
- Reduce the number of deaths, illnesses and impact from diseases and public health emergencies.
- Increase local community, civil society and Red Cross Red Crescent capacity to address the most urgent situations of vulnerability.
- Reduce intolerance, discrimination and social exclusion and promote respect for diversity and human dignity.

### Contact information

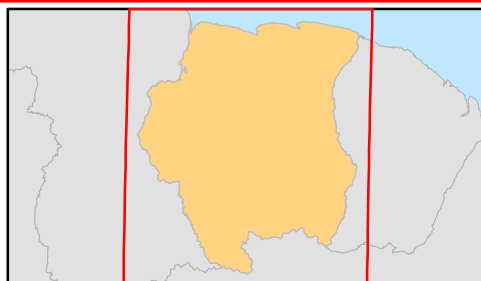
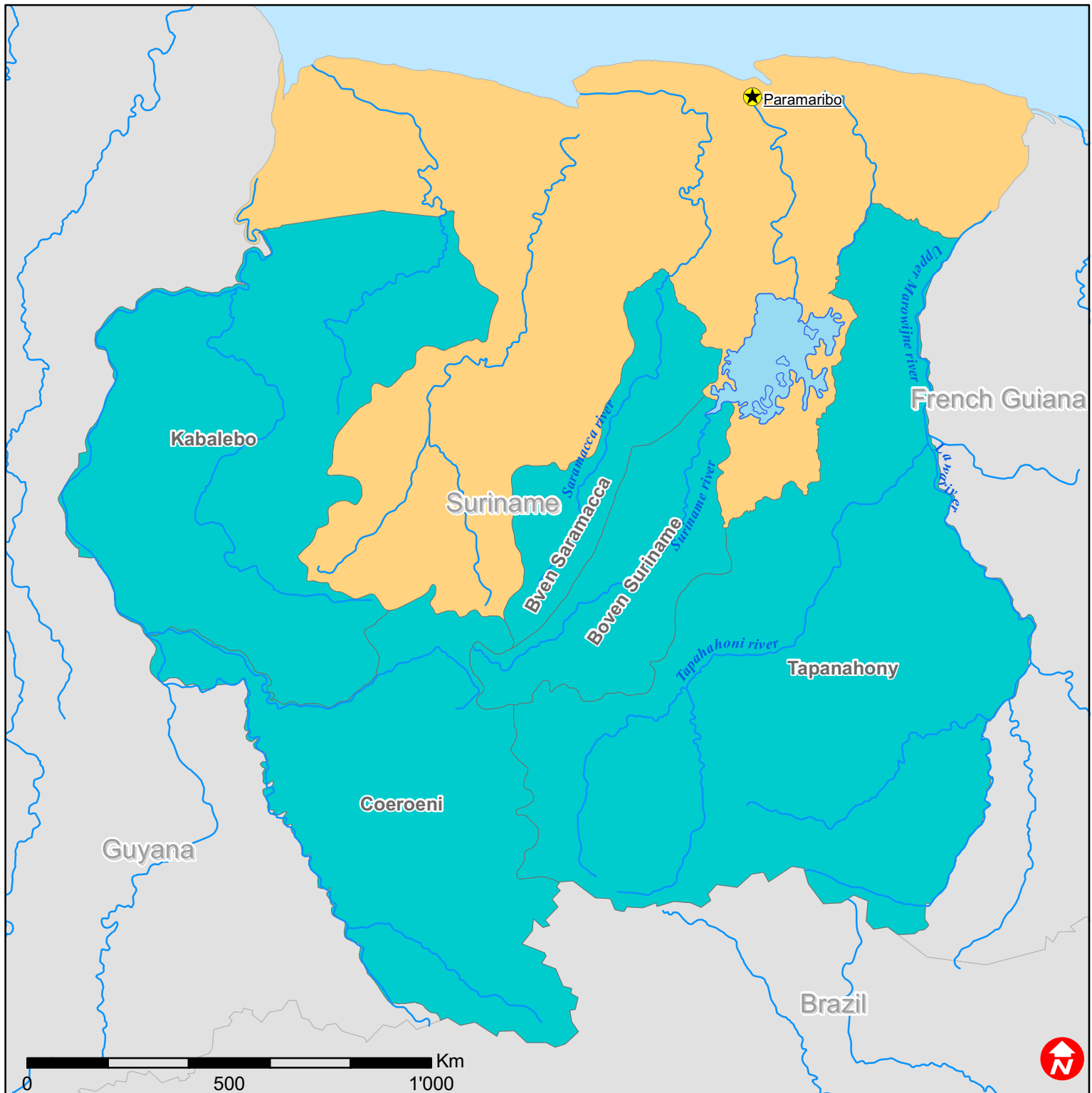
#### For further information specifically related to this operation please contact:

- In Suriname: Glenn Wijngaarde, Director General, Suriname Red Cross; email: [surcross@sr.net](mailto:surcross@sr.net); phone: (597) 498 410; fax (597) 464 780.
- In Panama: Jono Anzalone, Disaster Delegate Pan American Disaster Response Unit, Panama; e-mail: [jono.anzalone@ifrc.org](mailto:jono.anzalone@ifrc.org); phone: (507) 316 1001; fax: (507) 316 1082
- In Trinidad and Tobago: Tanya Wood, Representative of the Regional Representation Office; email: [Tanya.wood@ifrc.org](mailto:Tanya.wood@ifrc.org); phone: (868) 624 1557; fax: (868) 627 9627
- In Panama: Maria Alcazar, Resource Mobilization Coordinator, Americas; e-mail: [maria.alcazar@ifrc.org](mailto:maria.alcazar@ifrc.org); phone: (507) 380 0254; fax: (507) 317 1304
- In Geneva: Pablo Medina, Operations Coordinator for the Americas; email: [pablo.medina@ifrc.org](mailto:pablo.medina@ifrc.org); phone: (41) 22 730 4381.

[< Map and DREF budget below; click here to return to the title page >](#)



# Suriname: Floods



 Affected areas

## **APPEAL BUDGET SUMMARY**

### **SURINAME FLOODS**

MDRSR002

**ORIGINAL**

#### **RELIEF NEEDS**

|                           |               |
|---------------------------|---------------|
| Shelter                   | 0             |
| Construction Materials    | 0             |
| Clothing & Textiles       | 0             |
| Food                      | 68,250        |
| Seeds & Plants            | 0             |
| Water & Sanitation        | 0             |
| Medical & First Aid       | 0             |
| Teaching Materials        | 0             |
| Utensils & Tools          | 0             |
| Other Supplies & Services | 0             |
| <b>Total Relief Needs</b> | <b>68,250</b> |

#### **CAPITAL EQUIPMENT**

|                                     |        |
|-------------------------------------|--------|
| Land & Buildings                    | 0      |
| Vehicles Purchase                   | 0      |
| Computers & Telecom Equipment       | 10,500 |
| Office/Household Furniture & Equip. | 0      |
| Medical Equipment                   | 0      |
| Other Machinery & Equipment         | 0      |

#### **TRANSPORT, STORAGE & VEHICLES**

|                            |        |
|----------------------------|--------|
| Storage - Warehouse        | 0      |
| Distribution & Monitoring  | 10,500 |
| Transport & Vehicles Costs | 18,375 |

#### **PERSONNEL**

|                           |       |
|---------------------------|-------|
| International Staff       | 0     |
| Regionally Deployed Staff | 7,875 |
| National Staff            | 0     |
| National Society Staff    | 2,100 |
| Consultants               | 0     |

#### **WORKSHOPS & TRAINING**

|                      |       |
|----------------------|-------|
| Workshops & Training | 4,725 |
|----------------------|-------|

#### **GENERAL EXPENSES**

|                                |       |
|--------------------------------|-------|
| Travel                         | 3,360 |
| Information & Public Relations | 0     |
| Office running costs           | 3,150 |
| Communication Costs            | 1,575 |
| Professional Fees              | 0     |
| Financial Charges              | 0     |
| Other General Expenses         | 490   |

#### **PROGRAMME SUPPORT**

|                         |       |
|-------------------------|-------|
| Programme Support - PSR | 9,100 |
|-------------------------|-------|

---

**Total Operational Needs** **71,750**

---

**Total Appeal Budget (Cash & Kind)** **140,000**

---

**Available Ressources**

---

**Net Request** **140,000**

---