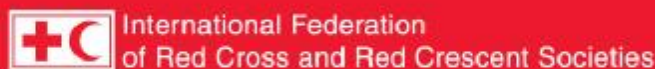


# DREF operation



## Argentina: Landslide

**DREF operation n° MDRAR004  
Glide no. MS-2009-000041-ARG  
18 February 2009**

The International Federation's Disaster Relief Emergency Fund (DREF) is a source of un-earmarked money created by the Federation in 1985 to ensure that immediate financial support is available for Red Cross and Red Crescent response to emergencies. The DREF is a vital part of the International Federation's disaster response system and increases the ability of national societies to respond to disasters.

**CHF 164,000 (USD 141,205 or EUR 109,808) has been allocated from the Federation's Disaster Relief Emergency Fund (DREF) to support the Argentine Red Cross in delivering immediate assistance to 600 families (3,000 beneficiaries). Un-earmarked funds to repay DREF are encouraged.**

**Summary:** On 9 February, heavy rainfall led to a major landslide in the city of Tartagal, in the province of Salta. Various families were displaced by the event which destroyed homes and infrastructure. The Argentine Red Cross (ARC) will provide the most affected people with essential relief items, basic medical care and psychological support (PSP), among other activities.

This operation is expected to be implemented over three months, and will therefore be completed by 13 May 2009; a Final Report will be made available three months after the end of the operation (by 13 August 2009).



**A bridge destroyed by the landslide in Tartagal, northern Argentina. Source: Reuters**

[\*\*<Click here for the DREF\*\*](#)

[\*\*budget, here for contact details, or here to view the map of the affected area >\*\*](#)

## The situation

On Monday, 9 February 2009, heavy rainfall in the northern Argentine province of Salta caused a landslide of mud, water and wood remains. The landslide swept through the western mountains next to the Tartagal river bank into Tartagal city. The city is located in the north-eastern region of the province of Salta, approximately 369 km from the capital city of Salta.

Washed away by the landslide, a 50 metre long railroad bridge fell onto a second bridge, creating a dike in the Tartagal River. The event caused the river to overflow, affecting several surrounding neighbourhoods.

Tartagal has an approximate population of 60,000 inhabitants, out of which 20,000 people have been affected according to official reports. Figures from Argentine authorities indicate that 742 people have been evacuated and placed in four temporary shelters. 1,200 people self evacuated, 2 people are missing and 2 people have died. The most heavily impacted neighbourhoods were Santa Maria and a settlement located west from the railroad bridge, known as Barrio Saavedra. In addition, a high percentage of the urban area of the city was covered by mud, reaching at places up to 1.5 metres. Preliminary information on infrastructure damage indicates that 30 houses have been destroyed and 300 more damaged, along with other reported loss of personal and commercial property.



An excavator clears debris from the Tartagal River. Source: Reuters

During the first hours of the emergency electric, water and telephone services were disrupted and major roads were temporarily blocked. The following table shows the number of people currently in shelters:

Temporary shelters	Neighborhoods	Children	Adults	Total	Total in Families
Escuela Belgrano	Ferroviario, Santa María, Barrio Militar, Mariano Moreno, Villa Güemes, Villa Saavedra y areas near Tartagal river	180	120	300	60
Cáritas		188	124	312	62
Armada Argentina		50	34	84	17
Escuela Uriburu		24	22	46	11
<b>Total</b>		<b>442</b>	<b>300</b>	<b>742</b>	<b>150</b>

Several organizations from the civil society and local authorities have been providing technical assistance after the emergency. The national government, in coordination with state authorities, will be leading the emergency response and will assign a total of USD 14,367,816. The initial relief efforts will focus on cleaning and sanitizing affected homes and other mud-covered areas, providing psychosocial support (PSP) to the evacuated families and eventually coordinating the return of the displaced to their homes.

The President of Argentina and the governor both visited the most affected areas and declared a state of social and economical emergency for 180 days in the city of Tartagal. The national government has already started dispatching food items, drinking water, diapers, mattresses, blankets, clothes, footwear and rain boots.

## Coordination and partnerships

Coordination meetings have been held among ARC, provincial and national authorities including the Ministries of Health, Interior and Social Development and other non-governmental organizations. In order to

complete damage and need assessments, the national government has provided the ARC with logistical and administrative resources.

Since the onset of the emergency, ARC has been sharing information with other non-governmental organizations (NGO's), such as Caritas, UNICEF, Save the Children and other local NGO's including Comision Cascos Blancos, Red Solitaria and La Casa de la Provincia de Salta (The House in the Province of Salta).

## Red Cross and Red Crescent action

Since the beginning of the emergency, the Argentine Red Cross (ARC) has been developing and implementing emergency relief activities including evacuation activities, damage and need assessments, the design of intervention strategies, mobilization of resources in the affected area of Tartagal. In addition, ARC volunteers have been providing psychosocial support, hygiene and health promotion in the temporary shelters. The ARC headquarters deployed a volunteer to support the local branch in Salta, which only has ten volunteers. Moreover, the ARC has opened a bank account in order to receive donations from the public to assist relief efforts.

The International Federation's Pan American Disaster Response Unit (PADRU and the Regional Representation Office for the Southern Cone have been in close communication with the ARC since the beginning of the emergency.

### The needs

Based on the assessments performed by the ARC jointly with government agencies, the most immediate needs identified in this emergency are:

- Drinking water
- Sanitation of water systems
- Cleaning of houses
- Basic relief items (kitchen kits, cleaning kits, hygiene kits)
- Basic health care
- Psychosocial support

### The proposed operation

The ARC elaborated a preliminary Plan of Action (PoA) which aims to meet the needs for 600 of the most affected families (3,000 beneficiaries). The affected families will receive emergency relief assistance, including hygiene, cleaning and kitchen kits, adequate supplies of safe drinking water and psychosocial support.

#### Relief distributions (food and basic non-food items)

**Objective: 600 families will benefit from the provision of hygiene, kitchen, and cleaning kits to recover from the effects of the landslide.**

#### Activities planned:

- Local purchase of kit products
- Preparation of the kits
- Identification and census of beneficiaries
- Distribution of the kits



The city's infrastructure has been affected by the water, mud and wood remains from the Tartagal River. Source: Reuters

Each adult hygiene kit will contain items for a five-member family for at least one month. The children hygiene kit is designed for infants up to 36 months of age and contains items for one child to last up to one month. Items will be locally procured. The quantity and type of items included in the hygiene kits is detailed below:

Adult hygiene kit	
5	Units of soap x 250gr
5	toothbrushes
2	Tooth paste 145 grams
20	Feminine hygiene pads
1	Toilet paper 12 units
1	1 litre shampoo
3	Small towels
2	Large towels
1	Cream mosquito repellent 200gr
3	Disposable shaving razors

Children hygiene kit for up to 36 months of age	
150	Diapers
2	Large cotton bags
1	Shampoo
1	Soap

Each family will receive a cleaning and kitchen kit (for a five-member family) for one month, containing the following items:

Cleaning kit	
1	Broom
1	Hand brush
5	Litres of concentrated detergent
5	Litres of concentrated bleach
1	10-12 litre bucket
3	Steel sponge (all-purpose)
2	Kitchen cloths
4	250gr Soap bars
1	Wide shovel

Kitchen kit	
5	Plastic glasses
5	Plastic plates
5	Stainless steel spoons
5	Stainless steel forks
5	Stainless steel knives
1	5 -10 litre pot with handles
1	Large stainless steel skillet
2	Match boxes
1	Kettle

## Water, sanitation, and hygiene promotion

**Objective: 600 families will benefit from the provision of water and sanitation kits for one month, adequate sanitation as well as hygiene promotion.**

Activities planned:

- Purchase of kit products
- Preparation of the kits
- Identification and census of beneficiaries
- Distribution of the kits
- Distribution of key messages on good hygiene practices (brochures and posters) through house visits and radio spots

600 families will receive a water and sanitation kit designed for five people up to one month, including the following items:

Water and Sanitation kit	
1	10 litre jerry can with tap
1	2 litre pitcher
2	1 litre of bleach
1	Dropper

## Emergency health

**Objective: People that have been evacuated will benefit from psychosocial support and hygiene promotion activities to contribute to their well-being.**

### Activities planned:

- Recreational activities with children in temporary shelters.
- Psychosocial support for men and women in temporary shelters.
- Workshops in psychosocial support and disease prevention

Children will participate in recreational activities: singing, theme games (health). Men and women will receive psychosocial support through workshops and the dissemination of printed material with issues on stress management. Additionally, four disease prevention workshops will be imparted covering the following areas: respiratory infections, diarrhea, dengue, HIV and AIDS, water and sanitation and personal hygiene amongst other themes.

## How we work

*All International Federation assistance seeks to adhere to the [Code of Conduct for the International Red Cross and Red Crescent Movement and Non-Governmental Organizations \(NGO's\) in Disaster Relief](#) and is committed to the [Humanitarian Charter and Minimum Standards in Disaster Response \(Sphere\)](#) in delivering assistance to the most vulnerable.*

The International Federation's activities are aligned with its Global Agenda, which sets out four broad goals to meet the Federation's mission to "improve the lives of vulnerable people by mobilizing the power of humanity".

### Global Agenda Goals:

- Reduce the numbers of deaths, injuries and impact from disasters.
- Reduce the number of deaths, illnesses and impact from diseases and public health emergencies.
- Increase local community, civil society and Red Cross Red Crescent capacity to address the most urgent situations of vulnerability.
- Reduce intolerance, discrimination and social exclusion and promote respect for diversity and human dignity.

## Contact information

### For further information specifically related to this operation please contact:

- In Argentina: Pablo Bruno, Executive Advisor for Disaster Preparedness and Disaster Response, Argentine Red Cross; email: [pbruno@cruzroja.org.ar](mailto:pbruno@cruzroja.org.ar); phone: (54) 11 4952 7200; fax: (54) 11 4952 7715.
- In Buenos Aires: Gustavo Ramirez, Regional Representative for the Southern Cone; email: [gustavo.ramirez@ifrc.org](mailto:gustavo.ramirez@ifrc.org)
- In Panama: Ghotai Ghazialam, Disaster Management Delegate, Pan American Disaster Response Unit; email: [ghotai.ghazialam@ifrc.org](mailto:ghotai.ghazialam@ifrc.org); phone: (507) 316 1001; fax: (507) 316 1082.
- In Panama: Mauricio Bustamante, Acting Head of Pan American Disaster Response Unit; email: [mauricio.bustamante@ifrc.org](mailto:mauricio.bustamante@ifrc.org); phone: (507) 316 1001; fax: (507) 316 1082.
- In Panama: Maria Alcazar, Resource Mobilization Coordinator, Americas; email: [maria.alcazar@ifrc.org](mailto:maria.alcazar@ifrc.org); phone: (507) 380 0250; fax: (507) 317 1304.
- In Geneva: Pablo Medina, Operations Coordinator for the Americas; email: [pablo.medina@ifrc.org](mailto:pablo.medina@ifrc.org); phone: (41) 79 2173376; fax: (41) 22 730 0395

[<DREF budget and map below; click here to return to the title page>](#)

## **DREF OPERATION BUDGET SUMMARY**

### **Argentina Landslides**

Annex 1

MDRAR004

#### **BUDGET CHF**

### **RELIEF NEEDS**

Shelter	
Construction Materials	
Clothing & Textiles	
Food	
Seeds & Plants	
Water & Sanitation	10,200
Medical & First Aid	
Teaching Materials	
Utensils & Tools	61,800
Other Supplies & Services	54,600
<b>Total Relief Needs</b>	<b>126,600</b>

### **CAPITAL EQUIPMENT**

Land & Buildings	
Vehicles Purchase	
Computers & Telecom Equipment	
Office/Household Furniture & Equip.	
Medical Equipment	
Other Machinery & Equipment	

### **TRANSPORT, STORAGE & VEHICLES**

Storage - Warehouse	1,000
Distribution & Monitoring	5,000
Transport & Vehicles Costs	7,000
Service fee & Recovery	

### **PERSONNEL**

International Staff	
Regionally Deployed Staff	
National Staff	8,000
National Society Staff	
Consultants	

### **WORKSHOPS & TRAINING**

Workshops & Training	2,225
----------------------	-------

### **GENERAL EXPENSES**

Travel	
Information & Public Relations	1,500
Office running costs	750
Communication Costs	740
Professional Fees	
Financial Charges	525
Other General Expenses	

### **PROGRAMME SUPPORT**

Programme Support - PSR	10,660
-------------------------	--------

---

**Total Operational Needs 37,400**

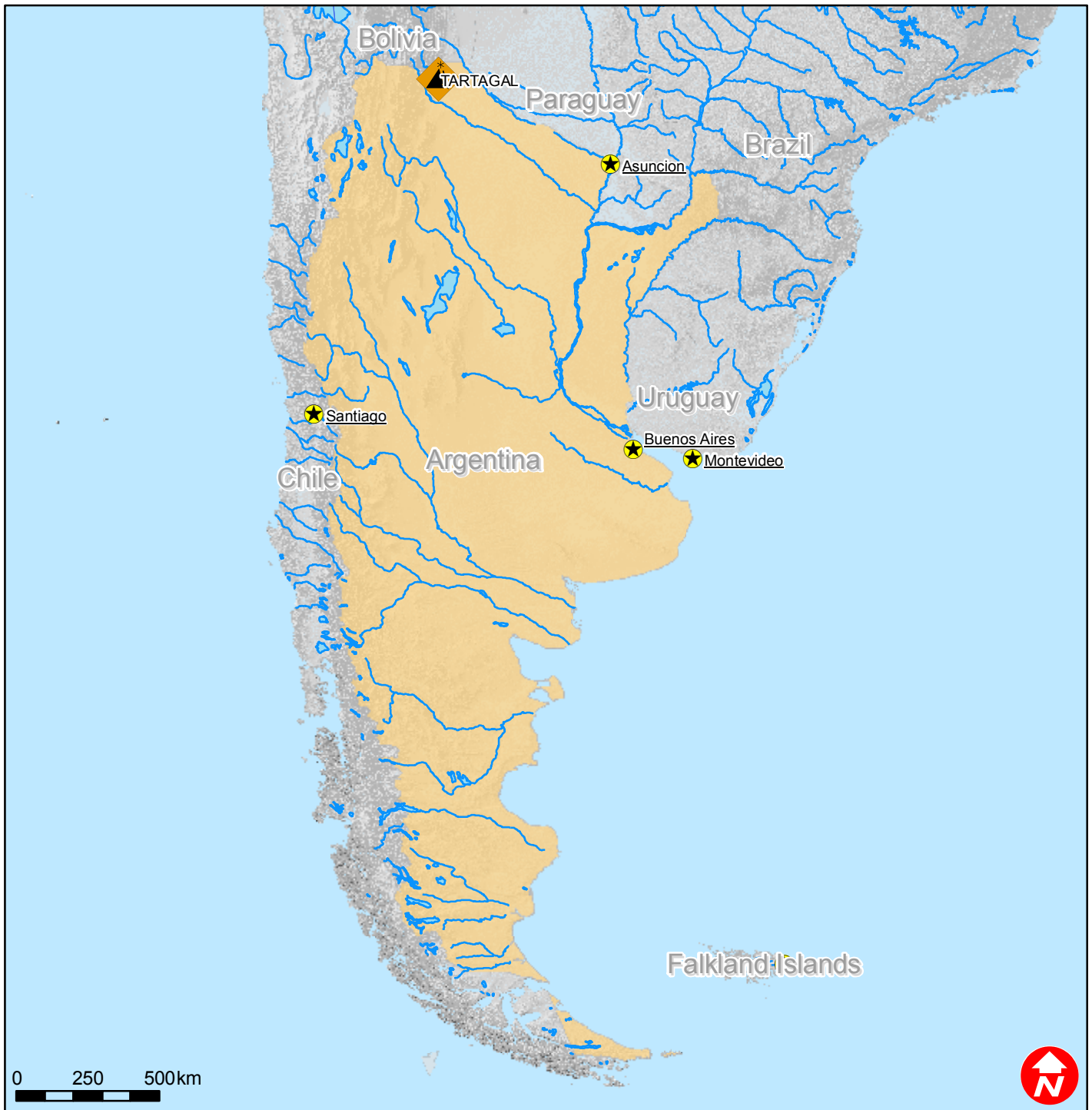
---

**DREF ALLOCATION 164,000**

---



# Argentina: Landslide



- Landslide
- Capitals
- Rivers
- Lakes