

# DREF operation



International Federation  
of Red Cross and Red Crescent Societies

## Bolivia: Floods

DREF operation n° MDRBO005  
GLIDE FL-2010-000008-BOL  
12 February 2010

The International Federation's Disaster Relief Emergency Fund (DREF) is a source of un-earmarked money created by the Federation in 1985 to ensure that immediate financial support is available for Red Cross and Red Crescent emergency response. The DREF is a vital part of the International Federation's disaster response system and increases the ability of National Societies to respond to disasters.

**CHF 146,723 (USD 137,604 or EUR 99,995) has been allocated from the Federation's Disaster Relief Emergency Fund (DREF) to support the Bolivian Red Cross (BRC) in delivering immediate assistance to some 1,500 families (7,500 people). Un-earmarked funds to repay DREF are encouraged.**

**Summary:** Severe rainfall since September 2009 has caused floods and mudslides in Bolivia. The Bolivian Civil Defence's assessments have reported several departments affected in Bolivia including Beni, Cochabamba, Chuquisiaca, La Paz and Santa Cruz. Although assessments are ongoing, it has been ascertained that approximately 36,163 families have been affected by the floods and mudslides.

This operation is expected to be implemented over three months, and will therefore be completed by 11 May 2010 a Final Report will be made available three months after the end of the operation (by 11 August 2010).



Children from the municipality of Villaroel have been affected by the floods, Department of Cochabamba. Source: Bolivian Red Cross

[<click here for the DREF budget, here for contact details, or here to view the map of the affected area>](#)

## The situation

On 29 January 2010, the Bolivian government declared a national emergency in response to heavy rains and flooding that have killed at least 14 people and affected some 36,163 families nationwide in recent weeks. The declaration will allow the government to deliver relief aid promptly to the most affected regions.

Heavy rains have been reported nationwide and these are attributed to the El Niño phenomenon which has resulted in major floods particularly in five departments: Chuquisiaca, Cochabamba, Beni, La Paz and Santa Cruz. Lower levels of affectation have been registered in the departments of Oruro, Potosí and Tarija. The

National Meteorological and Hydrological Service informed that the El Niño phenomenon will continue to affect the country, although the impact may be more moderate, but that there will nevertheless be an increase in rains mostly in eight departments of the country: Cochabamba, Chuquisiaca, Santa Cruz, Beni, La Paz, Pando, Oruro and Tarija.

**Table 1: Population affected by the foods**

Department	Number of affected families
Cochabamba	15,320
Chuquisiaca	9,163
Santa Cruz	3,700
Oruro	3,276
Beni	2,081
La Paz	1,532
Potosi	1,086
Tarija	5
<b>Total</b>	<b>36,163</b>

On 2 February, the Vice-Ministry of the Civil Defence informed that a total of 7,000 hectares of crops and 14,000 animals have been affected in all departments.

In the department of Cochabamba, several rivers including the Chapare, Ichilo, Chimore and Sacta rivers overflowed, affecting the municipalities of Villa Tunari, Chimore and Puerto Villaroel. On 8 February 2010 authorities reported that 6 people had died and 9,000 people were affected. The most affected municipalities are Chimore, Puerto Villaroel and Villa Tunari, where between 500 and 800 hectares of banana plantation were lost. The city of Puerto Villarreal is under water and affected people have sought refuge on roof tops; nevertheless no evacuations were needed since the water levels have receded in this area.

In the department of La Paz, several main rivers overflowed due to heavy rains, including the Chimore, Sajta, Chapare, Eterazama, Bolivar and La Paz rivers. In addition, on 28 January 2010, landslides destroyed at least 71 houses affecting 135 families and damaging an additional 62 houses. On 5 February 2010, another landslide affected approximately 67 people and 10 houses. Several communities in the northern region of La Paz sustained damages caused by overflowed rivers and floods.



**Landslides have destroyed more than 71 houses in the city of La Paz. Source: Bolivian Red Cross**

In the department of Santa Cruz, nine municipalities were hit by the floods: Santa Rosa, Portachuelo, Yapacani, Warnes and San Juan and additional communities are expected to be flooded due to the increased river water levels. According to damage assessments, it is estimated that 4,305 families have been affected.

In the department of Beni, the Civil Defence declared a red alert due to the increase in the river levels. The Emergency Operations Centre (Centro de Operaciones de Emergencia, COE) indicated that river levels have also increased obliging 826 families to evacuate and who are now staying in tents located around the city. In addition, 11 municipalities in the department of Potosí have also been affected by floods and drought since November 2009.

The National Council for Disaster Reduction and Response (CONRADE) has activated the municipal and departmental Emergency Operations Centres (EOC). The Ministry of Health and Sports (MSD) is coordinating field missions and response operations jointly with the Departmental Health Services (SEDES) in the affected regions.

Moreover, the Civil Defence has been providing assistance along with central and municipal government resources in the department of La Paz. To date, the central government has provided 10 tonnes of food, tents and other items to the affected people in the department of Beni.

## Coordination and partnerships

Inter-institutional meetings are held within the National COE to coordinate the emergency response and share information. National institutions including the Ministry of Rural and Land Development, the Ministry of Health, the Ministry of Basic Services and Roads and international agencies including the Pan American Health Organization (PAHO), UNICEF, UNETE, World Vision, Oxfam, CARE and Caritas are participating in these meetings. Additional meetings are being held to discuss specific sectors including water and sanitation, shelters, health and food assistance.

The International Federation through its Pan American Disaster Response Unit (PADRU) and the Regional Representative for Andean Region have been in constant communication with the Bolivian Red Cross. Additionally a Regional Intervention Team (RIT) member will be deployed to assist the BRC in carrying out its plan of action.

## Red Cross and Red Crescent action

The Bolivian Red Cross has the operational capacity to implement the proposed operation with its National Directorate and nine departmental branches as well as municipal branches, all with extensive experience in emergencies caused by natural disasters and health in emergencies.

Since the onset of the emergency, inter-institutional meetings have been held in the National COE where the Bolivian Red Cross has been actively participating and sharing information among all the actors involved. The National Disaster and Relief Unit is participating in coordination initiatives and follow-up meetings with the National Civil Defence, the National Disaster Directorate of the Ministry of Health and international organizations in-country including PAHO, the World Food Programme and World Vision.



People in Bolivia have been forced to evacuate their homes carrying their belongings. Source: [www.cope.es](http://www.cope.es)

The BRC volunteers have been providing first aid assistance, transportation of patients to hospitals and are evacuating families in cooperation with the municipal and departmental COEs.

## The needs

### Selection of people to be reached:

The BRC drew up a plan of action to provide assistance to the 1,500 most vulnerable families in the departments of Cochabamba and La Paz affected by the floods and landslides.

## The proposed operation

The plan of action consists of providing essential relief assistance to 1,500 families, in coordination with the COE and Civil Defence:

- Complementary food items (1,500 families)
- hygiene kits (1,500 families)
- kitchen kits (60 families)
- stoves (60 families)

This DREF operation will cover the procurement of these items and operational and administrative costs including transportation, visibility material and mobilization of a RIT.

### Relief distributions (food and basic non-food items)

**Objective: 1,500 families (7,500 people) from the departments of Cochabamba and La Paz will**

**benefit from the provision of essential food and non-food items to recover from the effects of the emergency.**

**Activities planned:**

- Conduct rapid emergency needs and capacity assessments.
- Develop a beneficiary targeting strategy and a registration system to deliver intended assistance.
- Distribute relief supplies and control supply movements from point of dispatch to end user.
- Monitor and evaluate the relief activities and provide reporting on relief distributions.
- Develop an exit strategy.

The Bolivian Red Cross will locally procure all the relief items following its standard procedures. Only 60 families will receive kitchen kits and stoves since these families have been identified as having lost all their personal belongings.

The following food and non-food items will be distributed to the targeted families:

Complementary food items	Hygiene items	Units for a family of five	Kitchen items	Units for a family of five
Rice	Toothpaste	1,500 units (1 per family)	Pots	60 units (1 per family)
Sugar	Tooth brushes		Pans	
Noodles	Soap		Kettle	
Flour	Medium towel		Spoon	
Salt	Detergent		Ladle	
Cooking oil	Sanitary pads		Plates	
	Toilet paper		Jugs	
			Cutlery	
		Kitchen knife		
		Gas stove		

## How we work

All International Federation assistance seeks to adhere to the [Code of Conduct for the International Red Cross and Red Crescent Movement and Non-Governmental Organizations \(NGO's\) in Disaster Relief](#) and the [Humanitarian Charter and Minimum Standards in Disaster Response \(Sphere\)](#) in delivering assistance to the most vulnerable.

The International Federation's vision is to inspire, encourage, facilitate and promote at all times all forms of humanitarian activities by National Societies, with a view to preventing and alleviating human suffering, and thereby contributing to the maintenance and promotion of human dignity and peace in the world.

The International Federation's work is guided by [Strategy 2020](#) which puts forward three strategic aims:

1. Save lives, protect livelihoods, and strengthen recovery from disaster and crises.
2. Enable healthy and safe living.
3. Promote social inclusion and a culture of non-violence and peace.

## Contact information

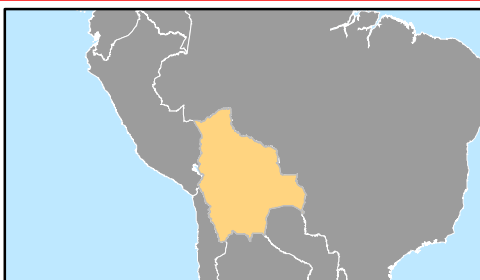
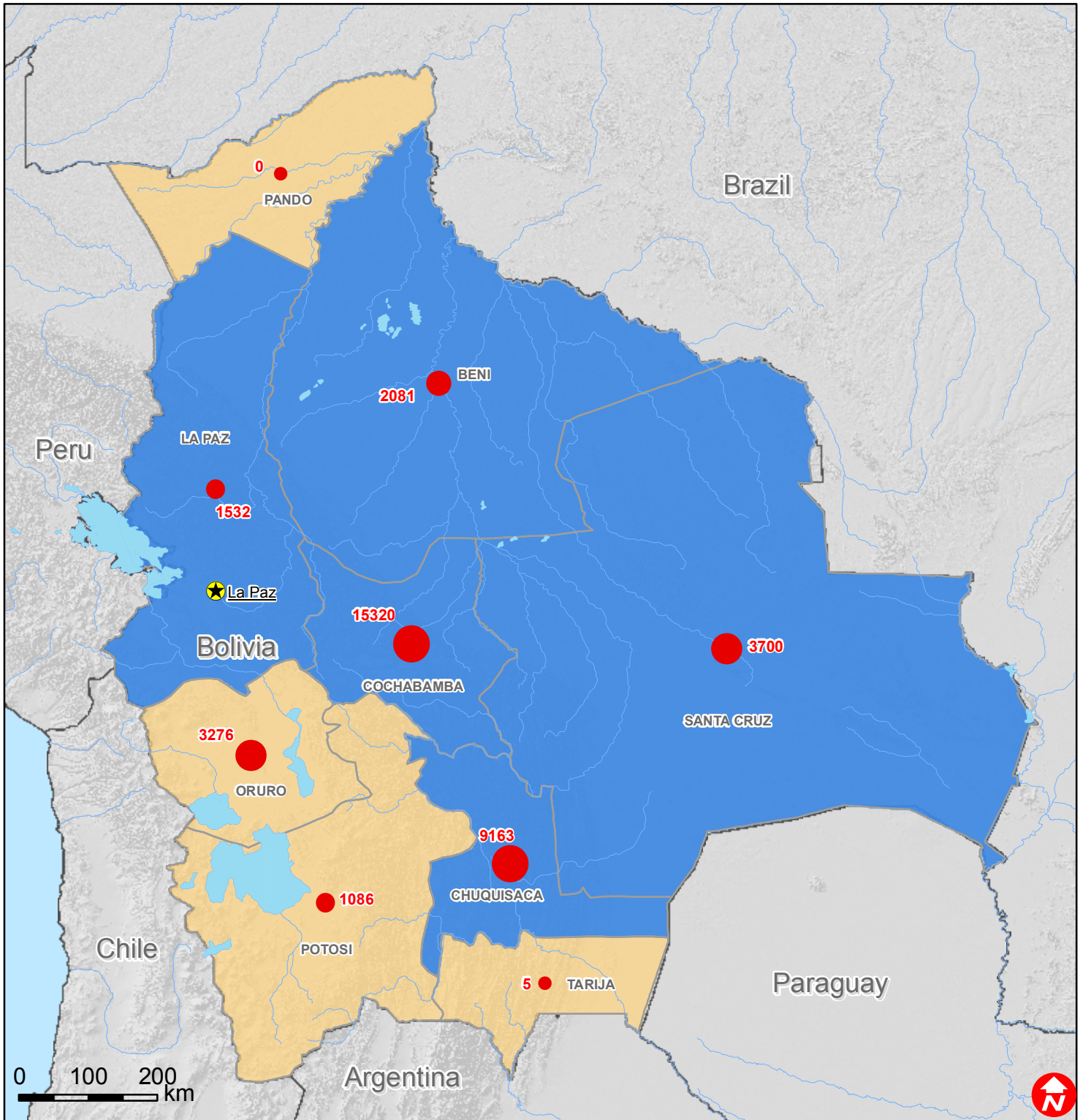
**For further information specifically related to this operation please contact:**

- In Bolivia: Ruben Gonzales, National Director, Disaster Relief Unit, Bolivian Red Cross; email: [socorro@cruzrojaboliviana.org](mailto:socorro@cruzrojaboliviana.org); phone: 591-2-2202934; fax: 591-2-2359102
- In Peru: Fernando Casanova, Regional Representative for the Andean Region; email: [fernando.casanova@ifrc.org](mailto:fernando.casanova@ifrc.org); phone: (511) 221 8151; fax: (511) 441 3607.
- In Panama: Mauricio Bustamante, Acting Head of PADRU, [mauricio.bustamante@ifrc.org](mailto:mauricio.bustamante@ifrc.org); phone: (507) 316 1001; fax: (507) 316 1082.
- In Panama: Ghotai Ghazialam, PADRU disaster management delegate, email: [ghotai.ghazialam@ifrc.org](mailto:ghotai.ghazialam@ifrc.org); phone: (507) 316 1001; fax: (507) 316 1082.
- In Panama: Maria Alcázar, Resource Mobilization Coordinator for the Americas, email: [maria.alcazar@ifrc.org](mailto:maria.alcazar@ifrc.org); phone: (507) 380 0250; fax: (507) 317 1304.
- In Geneva: Pablo Medina, Operations Coordinator for the Americas; email: [pablo.medina@ifrc.org](mailto:pablo.medina@ifrc.org); phone: (41 79) 217 3376.

[<DREF budget and map below; click here to return to the title page>](#)



# Bolivia: Floods



**Number of affected families**

- 0 - 5
- 6 - 1532
- 1533 - 2081
- 2082 - 3700
- 3701 - 15320

- ★ Capitals
- Rivers
- Departments
- Affected areas
- Lakes

The maps used do not imply the expression of any opinion on the part of the International Federation of the Red Cross and Red Crescent Societies or National Societies concerning the legal status of a territory or of its authorities.  
 Map data sources: ESRI, DEVINFO, International Federation - MDRBO005.mxd

**DREF OPERATION BUDGET SUMMARY**

Bolivia Floods

MDRBO005

BUDGET CHF

**RELIEF NEEDS**

Shelter	
Construction Materials	
Clothing & Textiles	
Food	68,951
Seeds & Plants	
Water & Sanitation	
Medical & First Aid	
Teaching Materials	
Utensils & Tools	8,723
Other Supplies & Services	32,070
<b>Total Relief Needs</b>	<b>109,744</b>

**CAPITAL EQUIPMENT**

Land & Buildings	
Vehicles Purchase	
Computers & Telecom Equipment	-
Office/Household Furniture & Equip.	
Medical Equipment	
Other Machinery & Equipment	

**TRANSPORT, STORAGE & VEHICLES**

Storage - Warehouse	
Distribution & Monitoring	
Transport & Vehicles Costs	6,949
Service fee & Recovery	-

**PERSONNEL**

International Staff	
Regionally Deployed Staff	3,421
National Staff	
National Society Staff	8,659
Consultants	

**WORKSHOPS & TRAINING**

Workshops &amp; Training

**GENERAL EXPENSES**

Travel	2,673
Information & Public Relations	1,069
Office running costs	1,604
Communication Costs	1,069
Professional Fees	
Financial Charges	2,000
Other General Expenses	

**PROGRAMME SUPPORT**

Programme Support - PSR	9,537
-------------------------	-------

---

**Total Operational Needs 36,979**

---

**DREF ALLOCATION 146,723**

---