


www.ifrc.org  
Saving lives,  
changing minds.

## Emergency Appeal Bangladesh: Tropical cyclone

 International Federation  
of Red Cross and Red Crescent Societies

**Emergency Appeal n° MDRBD013**  
**GLIDE n° TC-2013-000060-BGD**  
**19 July 2013**

This Revised Emergency Appeal now seeks CHF 1,730,251 (decreased from CHF 2,789,432) in cash, kind, or services to support the Bangladesh Red Crescent Society (BDRCS) to assist 8,000 families (40,000 beneficiaries) for nine months. This budget includes CHF 57,191 for the cost of Shelter Cluster coordination. Donors' support for this component as well as the Appeal are encouraged. The operation will be completed by the end of February 2014. A Final Report will be made available by the end of May 2014 (three months after the end of the operation).



A single woman in a makeshift house in Bhola District after Cyclone Mahasen. **Photo:** BDRCS NDRT.

**Appeal Coverage:** Approximately 21% of the original appeal (34% of revised appeal amount)

### **DREF and Appeal History:**

- On 18 May 2013, CHF 305,688 was allocated from the International Federation of Red Cross and Red Crescent Societies' (IFRC) Disaster Relief Emergency Fund (DREF) to support BDRCS in delivering immediate assistance to 20,000 beneficiaries for three months.
- An Emergency Appeal was launched on 24 May 2013 for CHF 2,789,432 aiming to assist 9,000 families (45,000 beneficiaries) over a nine months period. The Appeal is revised based on the Phase 3 Joint Need Assessment findings. Operational changes are denoted in this Revised Emergency Appeal document.

[<Click here to view the attached Revised Emergency Appeal budget; here to link to a map of the affected area; or here to view contact details>](#)

### **Summary**

The tropical cyclone Mahasen made landfall on 16 May 2013 in the Barisal division of southern Bangladesh. Ahead of the cyclone resulting in more than 1 million people living in the storm's path being evacuated to cyclone shelters. The Government of Bangladesh, with the assistance of the Bangladesh Red Crescent Society's (BDRCS) Cyclone Preparedness Programme (CPP) team successfully prevented a larger scale disaster through effective early warning systems. The cyclone resulted in 26,577 houses being

completely damaged and 124,428 houses being partially damaged in the nine affected districts.<sup>1</sup> People have been forced to take shelter on roadsides and in temporary locations. Women, children, the elderly and disabled were the most affected in this context.

Immediately after the cyclone made landfall BDRCS conducted light search and rescue operations. BDRCS also provided first aid and distributed dry food and clean water to the affected populations, particularly in the remote islands of Patuakhali, Bhola and Barguna districts. At the same time, the BDRCS cyclone contingency plan was activated whereby relief, including tarpaulins and water jerry cans were provided in Patuakhali, Barguna and Bhola. Six National Disaster Response Team (NDRT) members were deployed to assist with the operation.

Close coordination was maintained between BDRCS, in-country Partner National Societies (PNSs), IFRC and the International Committee of Red Cross (ICRC). On top of that, the Humanitarian Shelter Cluster, jointly led by the UNDP and IFRC met in Dhaka on 16 and 17 May 2013 to review its readiness for immediate shelter assistance to the affected populations. The Humanitarian Coordination Task Team (HCTT) requested a Phase 3 Joint Needs Assessment (JNA) for the three most affected districts (Patuakhali, Barguna and Bhola).<sup>2</sup>

In summary, the Phase 3 JNA revealed the disaster situation has improved over the first two-week period<sup>3</sup>. Around 31 per cent of the affected households have begun reconstructing their own houses. Only 20 per cent of the affected households have access to sanitation facilities, which is quite low compared to the national baseline of 39 per cent coverage. The hygiene coverage is also very low, in which 67 per cent of affected households do not have access to hygiene practice. Concluding that access to improved sanitation should be a priority area for response. Follow up response gap analysis was conducted by the Shelter, WASH and Early Recovery Clusters.

The Emergency Appeal and its operational plan has been revised in accordance with changing priorities on the ground, which seeks to support 4,000 families in the three most affected districts of Patuakhali, Barguna and Bhola in relief phase, and to further support 4,000 families from the districts of Patuakhali and Barguna in early recovery period. Assistance include shelter solutions together with sanitation facilities, livelihood programmes and disaster risk reduction (DRR) to the displaced and vulnerable families in the affected area.

The operation is expected to be implemented over nine months, and will be completed by the end of February 2014. A Final Report will be available by the end of May 2014 (three months after the end of the operation).

## The situation

On 15 May with early warning from the government on the approaching tropical cyclone Mahasen, around 1.1 million people were evacuated to safer places like cyclone shelters. On 16 May, its landfall hit ten west central coastal districts on 16 May, affecting 1,498,579 people and leaving 17 people dead. Following the landfall on 16 May as per the government's information as of 26 May, a total of 26,577 houses have been completely destroyed and 124,428 houses are partially destroyed. At this moment, most of these evacuated populations have returned to their homes. However some of them are still in makeshift camps as the homesteads are flooded with tidal surges caused by the cyclone. To date, the Government of Bangladesh (GoB) had distributed 3,501 MT of rice and allocated BDT 12.3 million (approx. CHF 145,000) in cash to those affected by the tropical cyclone. A programme to re-build completely damaged shelters was planned in Barguna, Patuakhali and Bhola districts and BDT 300 million (approx. CHF 2.5 million) would be allocated for the programme.

Based on the initial reports of the government and humanitarian agencies on the ground, the districts of Barguna, Bhola and Patuakhali were the most affected by the storm. Phase 1 Joint Needs Assessment

<sup>1</sup> Government D form information from nine districts: Patuakhali, Bhola, Barguna, Jalokhati, Chittagong, Pirojpur, Satkhira, Laskmipur and Noakhali.

<sup>2</sup> The assessment combines the efforts of the Shelter (IFRC), WASH (UNICEF), and Early Recovery (UNDP) Clusters and more than 20 operational agencies and non-governmental organizations (NGOs) from the three represented clusters and aims to clarify and confirm the extent, scale, and operational priorities resulting from this storm.

<sup>3</sup> The JNA reports are available on <http://www.lcqbangladesh.org/HCTT.php>.

(JNA) was triggered in order to have an initial overview of needs in the most affected areas. Phase 1 JNA was focused on the districts of Barguna, Bhola and Patuakhali whereby 1,042,340 people were affected by the cyclone and around 5,400 to 38,000 people were displaced. Immediate food assistance and livelihood support were identified. Based on the government report and Phase 1 JNA, HCTT endorsed activation of the current Phase 3 JNA Shelter, WASH, and Early Recovery detailed assessment in Barguna, Bhola, and Patuakhali districts.

**Table 1: Overview of affected households and proportions by Upazila**

District	Upazila	Number of Households <sup>4</sup>	Affected Households <sup>5</sup>	
			Number	Percentage
Bhola	Bhola Sadar	88,068	643	0.73%
	Lalmohon	60,988	632	1.04%
	Char fassion	94,649	73,022	77.15%
	Manpura	17,080	4,580	26.81%
	<b>Sub Total</b>	<b>260,785</b>	<b>78,877</b>	<b>30.25%</b>
Barguna	Barguna Sadar	62,086	32,050	51.62%
	Amtoli (Taltoli )	63,212	43,810	69.31%
	Patharghata	43,085	21,345	49.54%
	Betagi	27,922	4,400	15.76%
	<b>Sub Total</b>	<b>196,305</b>	<b>101,605</b>	<b>51.76%</b>
Patuakhali	Patuakhali Sadar	68,813	2,359	3.43%
	Galachipa	80,054	11,350	14.18%
	Kalapara	57,525	20,100	34.94%
	Rangabali	no data	8,524	-
	<b>Sub Total</b>	<b>206,392</b>	<b>42,333</b>	<b>-</b>
<b>Grand total</b>		<b>663,482</b>	<b>222,815</b>	<b>-</b>

Source: [Phase 3 Joint Needs Assessment](#) Bangladesh Cyclone Mahasen 18 June 2013

The Phase 3 JNA revealed that the disaster situation has improved over the first two-week period. But as the monsoon season continues, heavy rainfall has been continuing in the south-western districts of the country which has added more suffering to the life and livelihoods of the already affected people. From the last few days starting from 24 June, heavy rain fall is showering the whole country and making the hilly regions of SE Bangladesh at risk of potential flooding and landslides. Road and water communication systems have also been restored in some places while connectivity with remote islands remains difficult.



Shelter damage due to cyclone Mahasen. **Photo:** BDRCS.

From the Phase 3 JNA, around 31 per cent of the affected households have begun reconstructing their own houses, while around 20 per cent of the affected households have access to sanitation facilities. These numbers are lower compared to the national baseline of 39 per cent coverage. The hygiene coverage is poor in which 67 per cent of affected households do not have access to hygiene practice.

<sup>4</sup> Bangladesh 2011 Census

<sup>5</sup> D Form, 10 June 2013

## Coordination and partnerships

BDRCS national headquarters maintained regular communication with the Bangladesh Meteorological Department (BMD) to monitor the weather situation. In addition, BDRCS was in touch with the National Disaster Response Coordination Centre (NDRCC) of the Ministry of Disaster Management and Relief (MoDMR) regarding situation updates. On a local level, BDRCS has good working relations with the local administration, which enables the national society to effectively target the most affected areas and communities. For instance, NDRT members were deployed by BDRCS in the affected districts and they are maintaining coordination with local government and other agencies for better response.

BDRCS, in-country PNSs, IFRC and ICRC have been engaged in regular meetings since 14 May 2013. BDRCS is actively engaged in the response operation and is utilizing IFRC and PNSs to ensure strong communication and action is maintained at a highest level. All in-country PNSs have agreed that IFRC will maintain a coordination role in this operation. The British Red Cross through its project base in Barguna and Patuakhali is supporting BDRCS/IFRC in providing its staff to assist with beneficiary selection in the districts. They have indicated that their local staff in the two areas are available to assist further as needed. The German Red Cross has offered human resource support in the longer term programming and capacity building should that be identified as a future activity.

The Bangladesh Shelter Cluster, led by IFRC for emergency response and by UNDP for preparedness and recovery, met several times prior to landfall of Tropical Storm Mahasen to review its readiness to provide adequate shelter response to the affected population. Transfer of cluster lead from UNDP to IFRC was then initiated for the emergency phase of this response. The IFRC Country Office provided initial capacity to start up cluster response coordination activities, with surge coordination support being provided from the Asia Pacific Zone Office shelter delegate and additional support from the Canadian Red Cross Global Focal Point for Shelter Coordination and Information Management. Upon a request from the IFRC-led Shelter Coordination Team (SCT), the Global Shelter Cluster deployed a REACH assessment team to support the coordination and conduct of the Phase 3 JNA. The SCT also included a shelter analyst from the IFRC Country Office.

In addition, since IFRC is the active member of the HHCTT, Local Consultative Group (LCG) – Disaster Emergency Response (DER) group, information and operation updates are shared with other humanitarian agencies and the MoDMR in order to avoid overlapping of distribution of relief goods.

In addition to Shelter cluster, IFRC/BDRCS takes part in the efforts of the WASH, Health, Early Recovery, Logistics and Food Security clusters.

## Red Cross and Red Crescent action

When the cyclonic storm was approaching the coastal areas of Bangladesh on 11 May, BDRCS immediately alerted and mobilized its CPP volunteers and staff for disseminating early warning messages to the populations living in the 13 coastal districts. BDRCS called an emergency review meeting to prepare a plan for mobilizing its staff, volunteers and resources to respond to the consequences of the cyclonic storm.

The BDRCS cyclone contingency plan has been activated. BDRCS/IFRC has deployed three joint teams in Chittagong, Noakhali and Barisal regions to act as an interface between NHQ and affected location. Each of the teams had BDT 100,000 (approximately CHF 1,219) cash for emergency procurement of dry food from the local suppliers. Initially, BDRCS national headquarters (NHQ) dispatched three trucks with 4,000 NFIs (tarpaulins and water jerry cans) to the areas mentioned above. However, after the land fall, it was found that the situation in Chittagong was better than anticipated. Hence,



BDRCS volunteers disseminating early warning messages in the affected communities. **Photo:** BDRCS.

the prepositioned NFIs for Chittagong were returned to the NHQ, while NFIs in Barisal region were kept at Barisal.

BDRCS CPP volunteers and Unit volunteers assisted the government in terms of evacuated people to safer places, providing first aid and light search and rescue operation. The coastal district and city units have been working in close coordination with the respective deputy commissioners.

BDRCS conducted light search and rescue operations, provided first aid, and distributed dry food and safe drinking water to the affected population. On 18 May 2013, BDRCS sent relief items for 4,000 families in the districts of Patuakhali, Barguna and Bhola. To reinforce the capacities of the BDRCS district units for beneficiary selection, distribution planning, reporting six NDRT members were deployed in the districts of Patuakhali, Barguna and Bhola.

In-country PNSs like British Red Cross and German Red Cross have provided additional vehicles for BDRCS's initial response activities. The British Red Cross and German Red Cross are expected to operate in their respective project areas in the offshore islands of Barguna and Patuakhali districts.



Dispatch of relief items from NHQ to the affected areas.  
**Photo:** BDRCS.

BDRCS, IFRC and in-country PNSs participated on the Phase 3 JNA in Patuakhali, Bhola, and Barguna districts. IFRC together with UNDP lead the shelter cluster and IFRC took the lead role in emergency phase. Important shelter cluster activities can be found in Shelter Cluster website<sup>6</sup>. The Shelter Cluster has updated its 3W information and has been sharing with all agencies concerned to see the gap as well as to guide the emergency shelter response. The Shelter Cluster brought mapping specialist from REACH<sup>7</sup> to support the GIS mapping and data analysis of the JNA.

The IFRC communication team was in the field to collect stories and other communication means for web publishing. Also, the IFRC Bangladesh Country Office Preparedness and Resilience Unit (PRU) Coordinator visited the field during relief distribution as well as to oversee the JNA process.

## The needs

The cyclonic storm has affected millions of lives and damaged properties and livelihoods. The following needs are identified based on the Phase 3 JNA findings.

### Food and non-food items

Although the GoB has responded to the immediate food needs of the affected population, there remain gaps to be filled to meet the needs of the affected population, until the next harvest. The GoB has also supported some targeted families through small cash grants.

<sup>6</sup> <https://www.sheltercluster.org/Asia/Bangladesh/Cyclone%20Mahasen%202013/Pages/default.aspx>

<sup>7</sup> REACH is a joint initiative of the International Mobilization and Preparation for ACTION (IMPACT), the Agency for Technical Cooperation and Development (ACTED) and the United Nations Institute for Training and Research (UNITAR) Operational Satellite Applications Programme (UNOSAT).

### Shelter (emergency and transitional)

Findings	Recommendations
<ul style="list-style-type: none"> <li>97 per cent of the affected population are not displaced.</li> <li>31 per cent of households have begun rebuilding their home.</li> <li>Roofs and structure frame are the dominant failures of the houses examined.</li> <li>81 per cent of households responded that they needed help to repair their house.</li> <li>CGI sheet and timber were the most suggested materials for housing reconstruction</li> <li>29 per cent of households responded that repair cost will be around BDT 10,000 to 20,000 (CHF 100 to 200) each and followed by 19 per cent who required BDT 20,000 to 30,000 (CHF 200 to 300) for the repair cost.</li> </ul>	<ul style="list-style-type: none"> <li>Cash or material assistance for owner driven shelter repair for partially damaged shelter.</li> <li>TWG recommending complementary support.</li> <li>Advocate with government in favor of vulnerable families whose shelters are in unsustainable situation</li> <li>Conduct orientations and training on improved construction techniques in regards of cyclone resilience.</li> <li>Land allocation in safe location for landless people for shelter construction.</li> </ul>

GAP Analysis						
District	Fully damaged shelter			Partially damaged shelter		
	No. of households required assistance	Still in need		No. of households required assistance	Still in need	
		No. of households	Percentage		No. of households	Percentage
Bhola	4,957	445	8.98%	19,389	18,686	96.37%
Barguna	6,856	544	7.93%	61,812	60,487	97.86%
Patuakhali	1,0597	2,051	19.35%	28,665	28,143	98.18%
<b>Total</b>	<b>22,410</b>	<b>5,240</b>	<b>23.38%</b>	<b>10,9866</b>	<b>107,316</b>	<b>92.41%</b>

### Water and sanitation/WASH

- There is a need to prioritize and rehabilitate sanitation facilities with improved DRR features to reduce vulnerability in the future. This can involve integrating sanitation facilities as part of shelter construction/rehabilitation project or providing material (one slab and five rings) for substructure construction.
- The assessment identified a correlation with an increase use of surface water and an increase in symptoms of water-borne disease. In which suggested that complementary assistance like rehabilitating existing tube wells and re-establishing household access to ground water could be beneficial as a whole.
- Assessment results revealed that even when households have access to hygiene products such as soap, symptoms of disease are still higher than average following cyclone Mahasen. This suggests that households may not be aware of proper use or use the product as frequently as needed to decrease the incidence of disease given the new sanitation situation. This could be solved by integrating WASH messages into other sectors' interventions as well as to conduct a knowledge, attitudes and practices (KAP) survey.

### Livelihoods

- The Phase 3 JNA findings recommended cash assistance for livelihood resumption to avoid negative coping strategy targeting the most affected livelihoods. The cash assistance will directly benefit the daily laborers and marginal farmers in Barguna Sadar, Bhola Sadar, Patharghata, Kala Para, Char Fasson and Amtoli. Even though no major change in the source of livelihood was reported due to cyclone Mahasen, income levels were reported to have decreased. The number of households on a month cycle earning less than BDT 3,000 (CHF 37.5) has increased to 60 percent since the onset of cyclone Mahasen. The escalating households living under BDT 3,000 is mainly due to the lean agricultural period (May/June) and exacerbated by the storm. Most commonly reported impact was agriculture crop damage (pulses, groundnut, homestead vegetables); followed by loss of livestock, Aman rice seedling, fisheries, and daily laboring on a smaller scale.

- With the market still functioning after the cyclone Mahasen and 47 per cent of households have already restarted livelihood activities, cash-based support would be useful to boost local economy and livelihoods.
- Around 23 per cent of households uncertain of their livelihood activities, cash for work interventions could provide solution to rehabilitate essential community infrastructure and improve community resilience. These interventions could also address lagging livelihood re-instatement and negative coping strategies like migration, selling of assets, and borrowing loans at higher interest.
- Other recommendations to address the vulnerability of the affected populations included introducing climate resilient agriculture/livelihoods, promoting DRR awareness, preparedness and early warning system by local communities.

#### Beneficiary selection:

The BDRCS and IFRC joint teams visited the local administration, and followed up on government updates during the emergency phase with regards to present and future interventions and will continue this coordination throughout the operation. The population in temporary shelters or makeshift houses will be prioritized in the selection of beneficiaries in the affected locations and districts of Patuakhali, Barguna and Bhola. According to the BDRCS and other assessment reports, the vulnerability criteria focuses on the elderly women, marginal income farmers, women-headed families, lactating mothers, and physically challenged people.

### The Proposed Operation

With more details from the Phase 3 JNA analysis, the proposed operation is revised to support 4,000 families or 20,000 people of three most affected districts of Patuakhali, Barguna and Bhola during the relief phase through cash grant for food and NFIs, water storage jerry cans, hygiene kit and tarpaulins.

Under the early recovery phase, the 4,000 families from the same districts will be supported with shelter and sanitation solutions, as well as livelihood activities.

Relief phase targeting 4,000 families or 20,000 people			
Sector	Intervention type	No. of families	Beneficiary Criteria
Food & Non-food	Cash for basic food and non-food items	4,000	Families whose house is damaged and staying either in makeshift houses or under open sky as well as livelihood means (agricultural products, fisheries sector) are badly affected.
	WatSan	Water storage through Jerry can	
	Family hygiene kit and education	4,000	
Shelter	Emergency shelter through tarpaulin	4,000	

Early Recovery phase targeting 4,000 families or 20,000 people			
Sector	Intervention type	No. of families	Beneficiary Criteria
Shelter	Shelter solution through cash and shelter toolkits	2,000	Most vulnerable families whose houses are partially damaged <sup>8</sup> .
	PASSA for shelter awareness		
Sanitation	Sanitary latrine	1,000	50 per cent of the families receiving shelter support based on detailed assessment on sanitation situation.
	Sanitation campaign through PHAST		
Livelihood	Cash grant (including cash for training <sup>9</sup> )	1,000	Targeting population whose livelihood is greatly affected.

<sup>8</sup> For population whom their houses were fully damaged, support will mainly come from local government.

<sup>9</sup> Cash for training targeting specific beneficiaries like elderly people, persons with disability, etc. who attend the provided training on disaster preparedness, hygiene practices, primary health care, or livelihood support. This cash grant is adapted from IFRC standard CTP and in line with CTP initiatives by the Government of Bangladesh and other humanitarian actors in the country.

	Cash for work	1,000	People who don't have work after monsoon lean period (different from cash grant beneficiaries). As per the Phase 3 JNA, the proposed suitable time for CFW is September onwards whereby people has limited work opportunities; thus this intervention will have lesser effect on seasonal livelihood works.
<b>Disaster risk reduction (DRR) &amp; Environment</b>	Indigenous tree plantation and supporting creation of green belt programme of government	4,000	All 4,000 families targeted under early recovery phase.

### Relief distributions (food and basic non-food items)

<b>Outcome:</b> The immediate basic food and essential household needs of 4,000 affected families in the districts of Patuakhali, Bhola and Barguna are met within one month.	
<b>Outputs (expected results)</b>	<b>Activities planned</b>
The target families received a single cash grant of BDT 2,000 (CHF 25) per family for food and household needs.	<b>Activities planned:</b> <ul style="list-style-type: none"> <li>Based on Government preliminary list of affected families, the Red Crescent Youth (RCY) volunteers to conduct door-to-door assessments.</li> <li>Beneficiary registration and validation.</li> <li>Distribution of a single cash grant for food and immediate needs by BDRCS staff as well as RCY volunteers.</li> <li>Regular monitoring and reporting through BDRCS national headquarters staff and IFRC field monitors.</li> </ul>

### Water, sanitation, and hygiene promotion

<b>Outcome 1:</b> Water-related diseases are reduced and hygiene situation is improved for 4,000 affected families within one month in the districts of Patuakhali, Bhola and Barguna.	
<b>Outputs (expected results)</b>	<b>Activities planned</b>
The target families have improved access to safe drinking water through proper water storage (two jerry cans per family) and have better hygiene situation through hygiene kit (1 per family) and education.	<ul style="list-style-type: none"> <li>Mobilize water jerry cans from BDRCS/IFRC joint DP stock.</li> <li>Mobilize family hygiene kit from KL DP stock</li> <li>Distribution of jerry cans and hygiene kit by the Red Crescent Youth (RCY) to the same family targeted for cash grant.</li> <li>Hygiene education campaign during distribution of hygiene kits.</li> <li>Regular monitoring and reporting through BDRCS national headquarters staff and IFRC field monitors.</li> <li>Replenishment of the water jerry cans through Zone Logistics Unit.</li> </ul>
<b>Outcome 2:</b> Provision of hygienic latrine for 1,000 families along with hygiene promotion campaign is ensured within nine months in the districts of Patuakhali and Barguna.	
<b>Outputs (expected results)</b>	<b>Activities planned</b>
The target families have improved sanitation facilities through household sanitary latrine and improved hygienic behaviour through application of PHAST.	<ul style="list-style-type: none"> <li>Beneficiary registration and validation in line with the shelter component.</li> <li>Dissemination of beneficiary list in communities.</li> <li>Mobilize resources for construction/installation of sanitary latrine.</li> <li>Regular monitoring and reporting through BDRCS national headquarters staff and IFRC field monitors.</li> <li>Orient volunteers on PHAST</li> <li>Implement hygiene promotion campaign in the targeted communities through PHAST.</li> </ul>

### Emergency shelter

**Outcome 1:** The emergency shelter needs for 4,000 affected families are provided within one month in the districts of Patuakhali, Bhola and Barguna.

Outputs (expected results)	Activities planned
The target families received emergency shelter materials (two tarpaulins per family <sup>10</sup> ) to meet their immediate shelter needs.	<ul style="list-style-type: none"> <li>• Mobilize tarpaulins from BDRCS/IFRC joint DP stock.</li> <li>• Distribution of tarpaulins by the Red Crescent Youth (RCY).</li> <li>• Regular monitoring and reporting through BDRCS national headquarters staff and IFRC field monitors.</li> <li>• Procurement and replenishment of tarpaulins dispatched from BDRCS/IFRC DP stock Zone Logistics Unit.</li> <li>• On-going monitoring and technical advice by BDRCS national headquarters and IFRC.</li> </ul>

### Transitional Shelter

**Outcome:** 2,000 affected families in the districts of Patuakhali and Barguna have safer shelter solutions through the provision of locally appropriate shelter as suggested by the Shelter Cluster in Bangladesh within nine months.

Outputs (expected results)	Activities planned
The target families whose houses were partially damaged by the tropical cyclone Mahasen have rebuilt (BDT 20,000 each family in two installments).	<ul style="list-style-type: none"> <li>• Beneficiary selection and finalization of partially-damaged shelter category.</li> <li>• Mobilizing shelter materials through IFRC standard procurement policy.</li> <li>• Provide cash grant for shelter solution according to IFRC CTP standards.</li> <li>• Orient BDRCS volunteers for supporting shelter rebuilding work.</li> <li>• Conduct PASSA to help beneficiaries to repair their houses in a safer way.</li> <li>• Regular monitoring and reporting through BDRCS national headquarters staff and IFRC field monitors.</li> <li>• On-going monitoring and technical advice by BDRCS national headquarters and IFRC.</li> <li>• Preparing case studies and conduct evaluation study at the end of this operation.</li> <li>• Setting up beneficiary communication mechanism (complaint/suggestion box, dissemination of beneficiary list in public places, etc.).</li> </ul>

### Livelihood Recovery (cash grant, cash for training and cash for work)

**Outcome 1:** Livelihood of 1,000 affected families in the districts of Patuakhali and Barguna have restored within nine months' time.

Outputs (expected results)	Outputs (expected results)
Each target families received BDT 3,000 (CHF 37.5) as livelihood grant (commonly identified livelihood activities in the affected areas include poultry and livestock farming, homestead gardening, vegetable and rice growing, fishing, etc.) and BDT 3,000 as	<ul style="list-style-type: none"> <li>• Beneficiary selection and finalization.</li> <li>• Dissemination of beneficiary list in communities.</li> <li>• Distribution of cash grant through IFRC/BDRCS standard procedures (beneficiary CGID-Cash Grant ID form, individual bank account of beneficiary, bank transfer, etc.).</li> <li>• Contextualizing the cash for training curriculum for beneficiaries.</li> <li>• Conducting ToT for the volunteers on beneficiary cash for training.</li> <li>• Organize training sessions based on ToT modules (4 modules on</li> </ul>

<sup>10</sup> Only tarpaulins will be provided as external materials (ie rope and bamboo) are locally available to fix a makeshift shelter with tarpaulins. People who already have basic means for shelter use tarpaulins as ground sheets.

cash for training programme.	<p>hygiene and sanitation, DRR, health and nutrition and livelihood skill development will be designed).</p> <ul style="list-style-type: none"> <li>• Regular monitoring and reporting through BDRCS cash programme trained staff and volunteers including NDRT.</li> <li>• Ongoing monitoring and technical advice by BDRCS national headquarters and IFRC.</li> <li>• Setting up beneficiary communication mechanism (complaint/suggestion box, dissemination of beneficiary list in public places, etc.).</li> </ul>
<b>Outcome 2: Another 1,000 affected families in the districts of Patuakhali and Barguna have earning opportunities through cash for work in lean period.</b>	
<b>Outputs (expected results)</b>	<b>Outputs (expected results)</b>
Each targeted families received BDT 4,000 (CHF 50) for cash for work (20 days work)	<ul style="list-style-type: none"> <li>• Beneficiary selection and finalization.</li> <li>• Dissemination of beneficiary list in communities.</li> <li>• Community infrastructure improvement work scheme selection in consultation with local government institutions. The CFW will primarily target improvement/repairing of internal feeder/rural roads, protection of embankments as well as pond re-excavation.</li> <li>• Prepare a CFW implementation guideline for BDRCS.</li> <li>• Disbursement of cash through IFRC/BDRCS standard procedure.</li> <li>• Regular monitoring and reporting through BDRCS cash programme trained staff and volunteers including NDRT.</li> <li>• Ongoing monitoring and technical advice by BDRCS national headquarters and IFRC.</li> <li>• Setting up beneficiary communication mechanism (complaint/suggestion box, dissemination of beneficiary list in public places, etc.).</li> </ul>

#### DRR and Environment

<b>Outcome:</b> Tree plantation (native variety) initiative is taken by the targeted 4,000 families for environmental protection and disaster risk reduction in the districts of Patuakhali and Barguna.	
<b>Outputs (expected results)</b>	<b>Activities planned</b>
Each target families received locally available indigenous tree species.	<ul style="list-style-type: none"> <li>• Selecting the same 4,000 beneficiary families under the relief phase.</li> <li>• Selection of indigenous tree species in consultation with the government forest department and community people.</li> <li>• Procurement of saplings following IFRC procurement policy.</li> <li>• Distribution of saplings among the selected beneficiaries.</li> <li>• Awareness raising campaign on plantation of deep tooted indigenous tree.</li> </ul>

#### National Society Preparedness for Response

<b>Outcome:</b> The disaster preparedness and response capacity of BDRCS national headquarters and selected district units in affected areas strengthened within nine months.	
<b>Outputs (expected results)</b>	<b>Activities planned</b>
BDRCS national headquarters and district units in operational areas have improved their disaster response capacities.	<ul style="list-style-type: none"> <li>• Developing concept note/ToR of training in disaster response tools, approach and procedures.</li> <li>• Conducting training for staff and volunteers on response tools.</li> <li>• Conducting one women NDRT course.</li> <li>• Providing personal gears to NDRT.</li> <li>• Minor repairs and renovation of some BDRCS units.</li> <li>• Providing durable IT equipment to BDRCS response department.</li> </ul>

## Logistics

Logistics support will be provided following IFRC procedures to source and procure relief items needed, and to ensure the efficient and timely delivery of these items for the success of the operation. A Mobilisation Table has been opened with the objective to coordinate support provided by donors. Donors are requested to coordinate with the Kuala Lumpur zone logistics unit (ZLU) regarding outstanding needs. Shipping instructions will be provided to donors with a consignment tracking number (CTN) to be issued before shipping any goods to the operation. Procurement of goods and transport can also be arranged through the ZLU. Any Red Cross Red Crescent Movement partners who are interested to donate goods to this operation should coordinate via the ZLU in Kuala Lumpur. Tarpaulins are being supplied by the BDRCS/IFRC pre-positioned stock in Dhaka and will be replenished by the Zone Logistics Unit in Kuala Lumpur. In addition to the distribution of relief items, logistics support is given in developing standardized forms, papers and documentation. Logistics support is also provided for the hiring of vehicles specifically for the transportation of cash for distribution in remote locations.

## Communications – Advocacy and Public information

The IFRC communications team works closely with BDRCS to ensure the steady flow of information between operations in the field and major stakeholders including media, Movement partners and donors to provide regular and consistent updates on the disaster situation, and emergency and recovery operation. This is in addition to the already extensive media coverage on the situation and Red Cross Red Crescent response in the early days of the disaster. News stories on the disaster situation and beneficiary profiles will be highlighted in through international local media as well as on IFRC online channels such as the official website, [www.ifrc.org](http://www.ifrc.org), social media platforms and the blog site Our World Your Move. The BDRCS district units will engage the local media outlets to highlight the Red Cross Red Crescent response.

Regular flow of information will also be maintained between beneficiaries, respective BDRCS district units and response departments at the national headquarters to maintain transparency and address the immediate needs of the most vulnerable communities. Prior to relief distributions, beneficiaries will be made aware about the distribution packages, services, and the Fundamental Principles of the Red Cross Red Crescent Movement. The relief operation will maintain visibility in the field through appropriate branding such as banners and BDRCS aprons to enhance awareness about the role of the National Society and IFRC in the operation. BDRCS will also take initiatives to document all media releases and videos on this operation.

## Capacity of the National Society

BDRCS has a strong base of volunteers across the country with 50,000 volunteers in the coastal belts over 37 upazila (sub-districts) under the CPP, one third of which are female volunteers. The volunteers are skilled on community-based disaster preparedness/management, in basic training of first aid, search and rescue. BDRCS has 68 district/city branches throughout the country with more than 350,000 members. BDRCS, with IFRC's support, has created NDRT and Regional Disaster Response Team (RDRT) volunteers, who are on standby to be deployed at a moment's notice. As per the Disaster Mandate of the Standing Orders, during disasters, the Ministry of Disaster Management and Response (MoDMR), and BDRCS district units collaborate with local administrations. Additionally, BDRCS keeps close contact with the Department of Disaster Management, and Flood Forecasting and Warning Centre in order to stay up-to-date with the changing weather patterns in order to be prepared in the event of a disaster.

BDRCS has extensive experience in the field of humanitarian response and disaster risk reduction, in flood and cyclone prone districts. Since its inception, BDRCS has been involved in areas prone to disasters with quick and effective humanitarian response. Due to BDRCS's longstanding involvement in disaster response in Bangladesh, its staff has had international exposure and some have been working for the Movement.

BDRCS, with IFRC technical assistance, has over the years implemented and refined the cash grant distribution system for recovery and resilience projects, such as in the 2007 floods of Cyclone Sidr. The most recent experience by BDRCS was the cash grants distribution for livelihood recovery under the

Appeal for Floods and Landslides<sup>11</sup> which will be completed by September 2013. Standard procedures for cash grants (registration of beneficiaries, opening of bank accounts by beneficiary households, maintaining beneficiary ID cards to get the cash, receipt of grant through bank transfers, maintaining master roll, etc.) are in place. The standard procedures are applied for both relief and early recovery initiatives. This system will be adapted to match the demand of the Emergency Appeal operation.

BDRCS has placed an officer with each of the units in the affected areas, and they have been working on the response operation since the first day of this disaster. In coordination with the local administration, units have been sending daily situation reports on the evolving situation. Owing to the recent large-scale floods, Cyclones Sidr and Aila operations, the capacity of BDRCS NHQ has been enhanced. BDRCS warehouses in the north will serve as a strategic hub for the distribution of items. Technical support is provided by the IFRC country, regional and zone offices.

The operation involved shelter awareness component. BDRCS had implemented PASSA programme in three districts and have 20 trained volunteers. Furthermore, BDRCS has two PASSA trainers who had been involved in the recent PASSA ToT in Nepal from 12 to 19 May 2013. Two staff members who were trained in PASSA have practical experience of programme implementation.

### Capacity of the IFRC

The IFRC country office exists to support the host National Society on humanitarian response with a competent disaster management team. IFRC takes part in HCTT, at national level platform co-chaired by the MoDMR and UN RC of humanitarian response coordination. As a member of the Local Consultative Disaster Emergency Response Group, IFRC contributes to the humanitarian response decisions.

There has been an acknowledgement of IFRC being proactive in establishing coordination with Red Cross Movement partner's in-country and its traditional partners including ECHO and MoFDM to respond to any humanitarian crisis. Under the purview of the pre-disaster agreement signed between the Red Cross Movement partners in-country, IFRC works with BDRCS to explore support to its response.

The Disaster Management Unit (DMU) at Kuala Lumpur provides technical support. In addition, the South Asia regional office (SARD) in Delhi provides technical support to the country team as and when required. The DMU team extends support to BDRCS in maintaining liaison and coordination.

*Walter Cotte*  
Under Secretary General  
Programme Services Division

*Bekele Geleta*  
Secretary General

---

## Contact information

**For further information specifically related to this operation please contact:**

**Bangladesh Red Crescent Society:**

- BMM Mozharul Huq, ndc, Secretary General, phone: +88 02 935 2226, email: [secretarygeneral@bdracs.org](mailto:secretarygeneral@bdracs.org)

---

<sup>11</sup> Bangladesh (MDRBD010) – Floods and Landslides: <http://adore.ifrc.org/Download.aspx?FileId=43057>

**IFRC Bangladesh country office:**

- Tsehayou Seyoum, Head of Office, phone: +88 02 933 7314, fax: +88 02 934 1631, email: [tsehayou.seyoum@ifrc.org](mailto:tsehayou.seyoum@ifrc.org)

**IFRC South Asia regional office:**

- Enkas Chau, Acting Head of Regional Office, phone: +91 11 26154021-24, email: [enkas.chau@ifrc.org](mailto:enkas.chau@ifrc.org)

**IFRC Zone:**

- Karen Poon, Operations Coordinator, phone: +603 9207 5798, mobile: +6013 6300 366, email: [karen.poon@ifrc.org](mailto:karen.poon@ifrc.org)
- Al Panico, Head of Operations, phone: + 603 9207 5704, email: [al.panico@ifrc.org](mailto:al.panico@ifrc.org)
- Sharil Dewa, Acting Head of PMER, phone: +6 03 9207 5775, email: [sharil.dewa@ifrc.org](mailto:sharil.dewa@ifrc.org)
- Martine Zoethoutmaar, Relationship Manager/Resource Mobilisation, phone: +603 9207 5776, mobile: +6012 230 8543, email: [martine.zoethoutmaar@ifrc.org](mailto:martine.zoethoutmaar@ifrc.org)
- Florent Chane, Zone Logistics Coordinator, Phone: +6 012 298 9752, email: [florent.chane@ifrc.org](mailto:florent.chane@ifrc.org)

Please send all funding pledges to [zonerm.asiapacific@ifrc.org](mailto:zonerm.asiapacific@ifrc.org)

æ

**Click here**

1. **Emergency Appeal budget [below](#)**
2. **Map [below](#)**
3. **Click [here](#) to return to the title page**

**How we work**

All IFRC assistance seeks to adhere to the Code of Conduct for the International Red Cross and Red Crescent Movement and Non-Governmental Organizations (NGO's) in Disaster Relief and the Humanitarian Charter and Minimum Standards in Disaster Response (Sphere) in delivering assistance to the most vulnerable.

The IFRC's vision is to inspire, encourage, facilitate and promote at all times all forms of humanitarian activities by National Societies, with a view to preventing and alleviating human suffering, and thereby contributing to the maintenance and promotion of human dignity and peace in the world.

[www.ifrc.org](http://www.ifrc.org)  
Saving lives, changing minds.



The IFRC's work is guided by Strategy 2020 which puts forward three strategic aims:

1. Save lives, protect livelihoods, and strengthen recovery from disaster and crises.
2. Enable healthy and safe living.
3. Promote social inclusion and a culture of non-violence and peace.

# REVISED EMERGENCY APPEAL

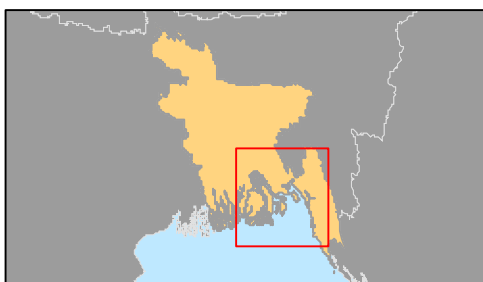
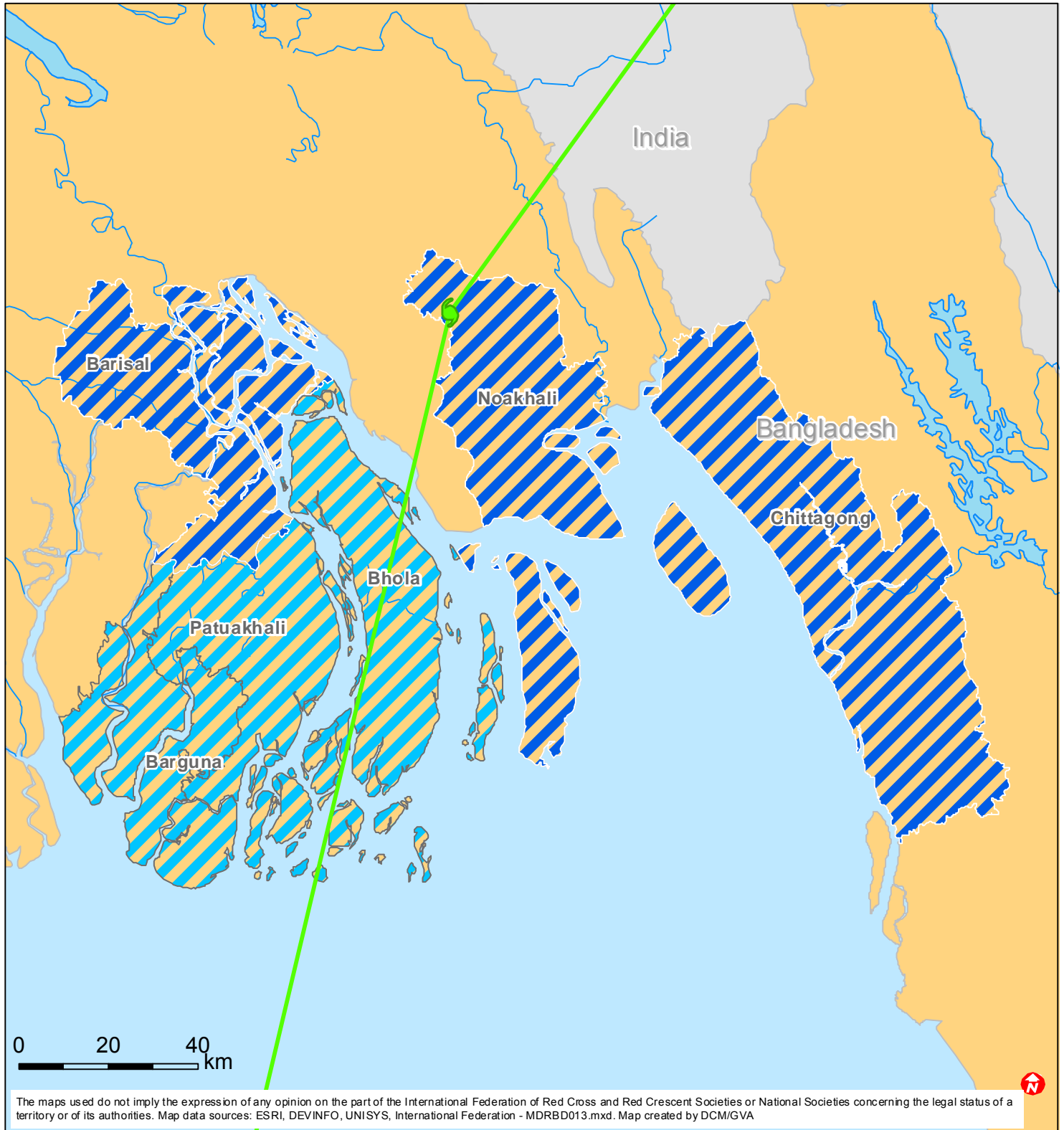
11/07/2013



MDRBD013 Bangladesh : Tropical Cyclone Mahasen

Budget Group	Multilateral Response	Inter-Agency Shelter Coord.	Appeal Budget CHF
Shelter - Relief	186,538		186,538
Food	102,564		102,564
Seeds & Plants	17,949		17,949
Water, Sanitation & Hygiene	230,821		230,821
Cash Disbursements	641,026		641,026
<b>Total RELIEF ITEMS, CONSTRUCTION AND SUPPLIES</b>	<b>1,178,897</b>	<b>0</b>	<b>1,178,897</b>
Computer & Telecom Equipment	5,128	1,000	6,128
Office/Household Furniture & Equipment	6,410		6,410
<b>Total LAND, VEHICLES AND EQUIPMENT</b>	<b>11,538</b>	<b>1,000</b>	<b>12,538</b>
Storage, Warehousing	1,282		1,282
Distribution & Monitoring	20,513		20,513
Transport & Vehicle Costs	19,231	1,300	20,531
<b>Total LOGISTICS, TRANSPORT AND STORAGE</b>	<b>41,026</b>	<b>1,300</b>	<b>42,326</b>
International Staff		16,950	16,950
National Staff	106,154	3,000	109,154
National Society Staff	64,038		64,038
Volunteers	9,487		9,487
<b>Total PERSONNEL</b>	<b>179,679</b>	<b>19,950</b>	<b>199,629</b>
Consultants	19,231	20,950	40,181
Professional Fees		3,600	3,600
<b>Total CONSULTANTS &amp; PROFESSIONAL FEES</b>	<b>19,231</b>	<b>24,550</b>	<b>43,781</b>
Workshops & Training	43,590		43,590
<b>Total WORKSHOP &amp; TRAINING</b>	<b>43,590</b>	<b>0</b>	<b>43,590</b>
Travel	11,538	3,500	15,038
Information & Public Relations	8,974		8,974
Office Costs	34,359	1,050	35,409
Communications	7,692	1,250	8,942
Financial Charges	6,410		6,410
Other General Expenses		1,100	1,100
Shared Office and Services Costs	28,013		28,013
<b>Total GENERAL EXPENDITURES</b>	<b>96,988</b>	<b>6,900</b>	<b>103,888</b>
Programme and Services Support Recovery	102,112	3,491	105,602
<b>Total INDIRECT COSTS</b>	<b>102,112</b>	<b>3,491</b>	<b>105,602</b>
<b>TOTAL BUDGET</b>	<b>1,673,061</b>	<b>57,191</b>	<b>1,730,251</b>
<b>Available Resources</b>			
Multilateral Contributions	546,814	29,317	576,131
<b>TOTAL AVAILABLE RESOURCES</b>	<b>546,814</b>	<b>29,317</b>	<b>576,131</b>
<b>NET EMERGENCY APPEAL NEEDS</b>	<b>1,126,247</b>	<b>27,874</b>	<b>1,154,120</b>



# Bangladesh: Tropical storm Mahasen



-  Districts likely to be affected by storm
-  Requirement being identified