

www.ifrc.org
Saving lives,
changing minds.

Disaster relief emergency fund (DREF)

BENIN: Floods

 International Federation
of Red Cross and Red Crescent Societies

DREF operation n° MDRBJ012
GLIDE n° FF-2013-000118-BEN
20 September 2013

The International Federation of Red Cross and Red Crescent (IFRC) Disaster Relief Emergency Fund (DREF) is a source of un-earmarked money created by the Federation in 1985 to ensure that immediate financial support is available for Red Cross and Red Crescent emergency response. The DREF is a vital part of the International Federation's disaster response system and increases the ability of National Societies to respond to disasters.

CHF 193,944 has been allocated from the IFRC's Disaster Relief Emergency Fund (DREF) to support the Benin Red Cross National Society (BRCS) in delivering immediate assistance to some 7,000 beneficiaries for 3 months. Unearmarked funds to repay DREF are encouraged.

Summary: The recent heavy rains and flooding in large parts of West Africa has led to an overflow of the Niger River, which has resulted in flash floods in northern Benin mainly in the municipalities of Karimama and Malanville from 5th September 2013. To date, the floods have destroyed more than 3,000 houses and affected 13,000 hectares of farmland, leaving more than 10,000 people displaced and more than 30,000 affected.



Some of the displaced families are temporarily sheltered in school premises. Photo/IFRC

According to the **National Oceanic and Atmospheric Administration (NOAA)** climate prediction centre forecast for 17-30 September 2013, the rains will continue in countries along the route of the Niger River. The Department of Civil Protection of Benin (DPC) maintains an orange alert level for the flood risk of the affected areas.

The local branches of the BRCS have mobilized volunteers for basic risk sensitization and early warning. During the period of 9 to 15 of September 2013, the BRCS carried out a rapid assessment to get an overview of specific affected communities and basic needs, allowing the BRCS to plan basic interventions to meet immediate needs. This DREF allocation supports the BRCS in implementing basic emergency shelter, non-food items, health, water, sanitation and hygiene promotion activities while carrying out a more detailed assessment to further target the interventions.

This operation is expected to be implemented over three months, and will therefore be completed by end of December 2013. A Final Report will be made available three months after the end of the operation, by end of March 2014.

[<click here for the DREF budget;](#) [here for contact details;](#) [here for map of the affected area>](#)

The situation

The Niger River began to overflow its banks following torrential rains that fell in Niger and Benin since the end of August 2013 and the beginning of September, causing massive damage. The floods have affected the northern part of Benin with the municipalities of Karimama and Malanville being the most affected

Figures published by the local authorities of the affected municipalities on 9th September 2013 (see table below) indicate a high number of people affected in both municipalities.

Municipality	Displaced families	Displaced people	Affected families	Affected people
Karimama	1,754	8,381	5,547	27,735
Malanville	221	1,105	1,000	5,000
Total	1,195	9,486	6,547	32,735

Source: Municipal authorities.

During the period 9 to 15 September, the Benin Red Cross organized an assessment mission in the affected areas. The assessment documented the number of affected population and displaced population in details, verifying the totals indicated by the local authorities. The assessment also identified basic humanitarian needs, but further needs assessment is necessary to fully develop the implementation strategy.

Some 3,025 houses have been reported destroyed. Almost all the houses are built of flimsy materials and mud with a petrified roof. Furthermore 13,073 hectares of farmland has been destroyed, exposing the affected populations to threats of food insecurity and malnutrition. In Karimama, floods have destroyed roads and made access to displaced population almost impossible. 99 households were housed in tents and tarpaulins made available by the municipality and the Red Cross local branch.

According to the NOAA, more rain is expected in countries along the route of the Niger River, and the Department for Civil Protection of Benin (DPC) maintains an orange alert level for the flood risk of the affected areas.

With the upcoming school year, the situation of displaced persons who are temporarily in schools could be worse because they will be forced to relocate elsewhere

Coordination and partnerships

Local committees of both municipalities are members of the communal platform for risk reduction and actively participate in activities including preliminary assessment in the affected areas.

The Beninese government has made available to each of the affected municipalities on Sunday, September 8, 2013, food and non-food as per the below table, but to date this has not yet been distributed to the beneficiaries. The BRCS has not yet been requested to support the distribution of the items.

Red Cross and Red Crescent action

Local branches Karimama and Malanville have mobilized volunteers for rapid assessment of the situation in order to get an overview and have started risk sensitization and hygiene promotion in IDP sites and regrouping areas since 10 September. Other branches are on high alert and are monitoring early warning indicators. The BRC also supports the local authorities in providing immediate assistance to the affected population.

The IFRC through its regional and country team is supporting the BRC in operational planning and implementation. The relief items distributed through this DREF operation will be released from the IFRC preparedness stock in Benin.

The needs

The rapid assessment carried out by the BRC has identified an urgent need for emergency shelter, basic household items (blankets, sleeping mats, kitchen sets etc.), food, safe water, access to proper sanitation and reduction of increased health risks caused by the floods.

As other supplementary information is needed, this DREF will be used to support a more detailed assessment in order to develop the action plan, which will be revised according to the changing needs of the most affected households, including the need for emergency shelter.

Criteria for selecting beneficiaries to identify the most vulnerable displaced households will be developed and disseminated. Priority will be given to female-headed and child-headed households, households with children under 5 years and households with pregnant women, elderly or physically disabled persons.

The proposed operation

The BRCS with support from IFRC aims to provide assistance to 600 affected families displaced in the two municipalities with a selection of essential non-food items as well as awareness activities on treatment and storage of water, health and hygiene promotion. An additional 800 families at risk in the targeted communities will be targeted by the hygiene and health promotion campaign

Supported by a Regional Disaster Response Team (RDRT) member, the National Society will carry out detailed assessments to determine whether further changes are needed to this proposed operation, based on the evolution of the situation in the field.

50 Volunteers will receive orientation (retraining) on needs assessment and registration of beneficiaries (leading to registering of targeted beneficiaries who will receive assistance in the coming weeks, in each area), and on health and hygiene promotion.

Emergency Assessments	
Outcome: Adequate assessment data is collected and analysed in the affected areas to develop appropriate response plans.	
Outputs <ul style="list-style-type: none"> Detailed needs assessment data is collected and analysed. An appropriate action plan is developed 	Planned activities: <ul style="list-style-type: none"> Orientation Session/training of 50 volunteers in needs assessment, beneficiary registration and distribution Carry out detailed assessments analyse collected information Develop detailed implementation plans for each operational objective and establish operational priorities.

Emergency shelter and non-food items	
Outcome: Meet the immediate emergency shelter and basic non-food item needs of 600 households (3,000 beneficiaries) in Karimama and Malanville	
Outputs <ul style="list-style-type: none"> 600 most vulnerable households have received emergency shelter materials and construction support. 600 most vulnerable households have received household kit consisting of two sleeping mats, two blankets and one kitchen set. 	Planned activities: <ul style="list-style-type: none"> Identification and registration of beneficiaries in coordination with others partners Distribute emergency shelter and non-food items (1200 tarpaulins, 600 sets of tools and material for framing, 1200 blankets, 1200 sleeping mats and 600 kitchen sets) to the targeted beneficiaries. Replenish distributed items released from IFRC stocks. Trained volunteers to assist the population in the erection of temporary shelters Monitor and reporting of the distribution and construction of temporary shelters Conduct sectoral detailed assessments to establish strategy for the re-construction of damaged houses with mitigation measures to reduce impact of floods in the areas affected.

Emergency health/Nutrition

Objective: Meet the basic health needs for at least 7,000 people (1,400 households)	
Outputs <ul style="list-style-type: none"> At least 7,000 people (1,400 households) in the two targeted municipalities have improved knowledge and practice of flood-related health risks. 	Planned activities: <ul style="list-style-type: none"> Conduct an assessment of the health needs of the affected population Organize activities to promote health education within the affected population to prevent outbreaks. (develop disease prevention activities and health messages through the duplication of IEC materials) Monitor and report on activities
Outputs <ul style="list-style-type: none"> The 600 households targeted for emergency shelter and non-food items receive mosquito nets 	<ul style="list-style-type: none"> Identification and registration of beneficiaries in coordination with others partners Distribute 1,200 mosquito nets to target population. Replenish IFRC country stocks.

Water, Sanitation, and Hygiene promotion

Outcome: Reduce the risk of waterborne diseases on the 1,400 targeted households through health promotion, improving access to drinking water and sanitation basic services.	
Output: <ul style="list-style-type: none"> The 600 households targeted for emergency shelter and non-food items have access to adequate safe water. 	Planned activities: <ul style="list-style-type: none"> Train/refresh 50 volunteers in household water treatment and storage techniques. Procure and distribute 600 jerry cans, 600 buckets and 300,000 aqua tabs. Rehabilitation of 4 water points
Outputs1: <ul style="list-style-type: none"> The total target population benefit from the activities of hygiene promotion 	Planned activities: <ul style="list-style-type: none"> Training/retraining of 50 volunteers on key messages to convey on hygiene and carry out activities to promote hygiene Procure and distribute 12,000 bars of soap. Monitor and report on activities
Output 2: <ul style="list-style-type: none"> The target population has access to basic sanitation facilities in sufficient quantity respecting the sphere standards 	Planned activities: <ul style="list-style-type: none"> Conduct pre-diagnostic and feasibility studies on existing health facilities and IDP sites Purchase tools and materials for the construction of up to 4 emergency latrines and showers

Logistic

Outcome: Adequate logistic support is provided for the implementation of the operation	
Outputs <ul style="list-style-type: none"> Coordinate the mobilization of relief items and made available for distribution on the identified sites 	Planned activities <ul style="list-style-type: none"> Provide logistical support to transport items, staff and volunteers on the intervention sites Coordinate logistics and transport with partners and local organizations if needed Produce a report on logistic activities

Contact information

For further information specifically related to this operation, please contact:

- **In Benin:** Tibouté Sama Emilie, Secrétaire Général ai, +22995963091; Email: etiboute@yahoo.fr
- **IFRC West Coast Regional Representation:** Daniel Sayi, West Coast Regional Representative; phone:+225 22 50 13 22; (+225) 66775261 / 45347668; email: daniel.sayi@ifrc.org
- **IFRC Africa Zone:** Daniel Bolaños, Disaster Management Coordinator for Africa; Nairobi; phone: +254 (0)731 067 489; email: daniel.bolanos@ifrc.org
- **IFRC Geneva:** Christine South, Operations Quality Assurance Senior Officer; phone: +41.22.730.45 29; email: christine.south@ifrc.org
- **IFRC Zone Logistics Unit (ZLU):** Rishi Ramrakha, Head of zone logistics unit; Tel: +254 733 888 022/ Fax +254 20 271 2777; email: rishi.ramrakha@ifrc.org

For Resource Mobilization and Pledges:

- **West and Central Africa hub:** Elisabeth SECK, Resource Mobilization Officer, Dakar; phone: +221 33 869 36 60; mobile: +221 77 450 59 49; email: elisabeth.seck@ifrc.org

For Performance and Accountability (planning, monitoring, evaluation and reporting):

- **IFRC Africa Zone:** Robert Ondrusek, PMER/QA Delegate for Africa; Nairobi; phone: +254 731 067277; email: robert.ondrusek@ifrc.org

How we work

All IFRC assistance seeks to adhere to the Code of Conduct for the International Red Cross and Red Crescent Movement and Non-Governmental Organizations (NGOs) in Disaster Relief and the Humanitarian Charter and Minimum Standards in Disaster Response (Sphere) in delivering assistance to the most vulnerable.

The IFRC's vision is to inspire, encourage, facilitate and promote at all times all forms of humanitarian activities by National Societies, with a view to preventing and alleviating human suffering, and thereby contributing to the maintenance and promotion of human dignity and peace in the world.

www.ifrc.org
Saving lives, changing minds.



The IFRC's work is guided by Strategy 2020 which puts forward three strategic aims:

1. Save lives, protect livelihoods, and strengthen recovery from disaster and crises.
2. Enable healthy and safe living.
3. Promote social inclusion and a culture of non-violence and peace

DREF OPERATION

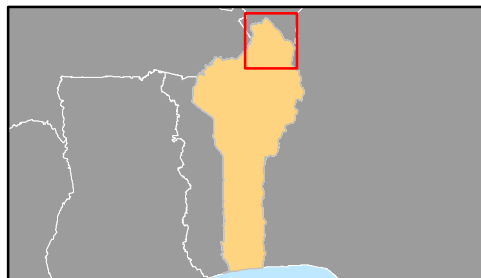
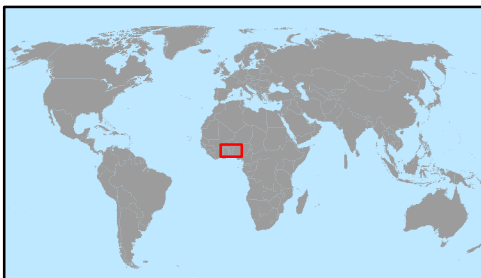
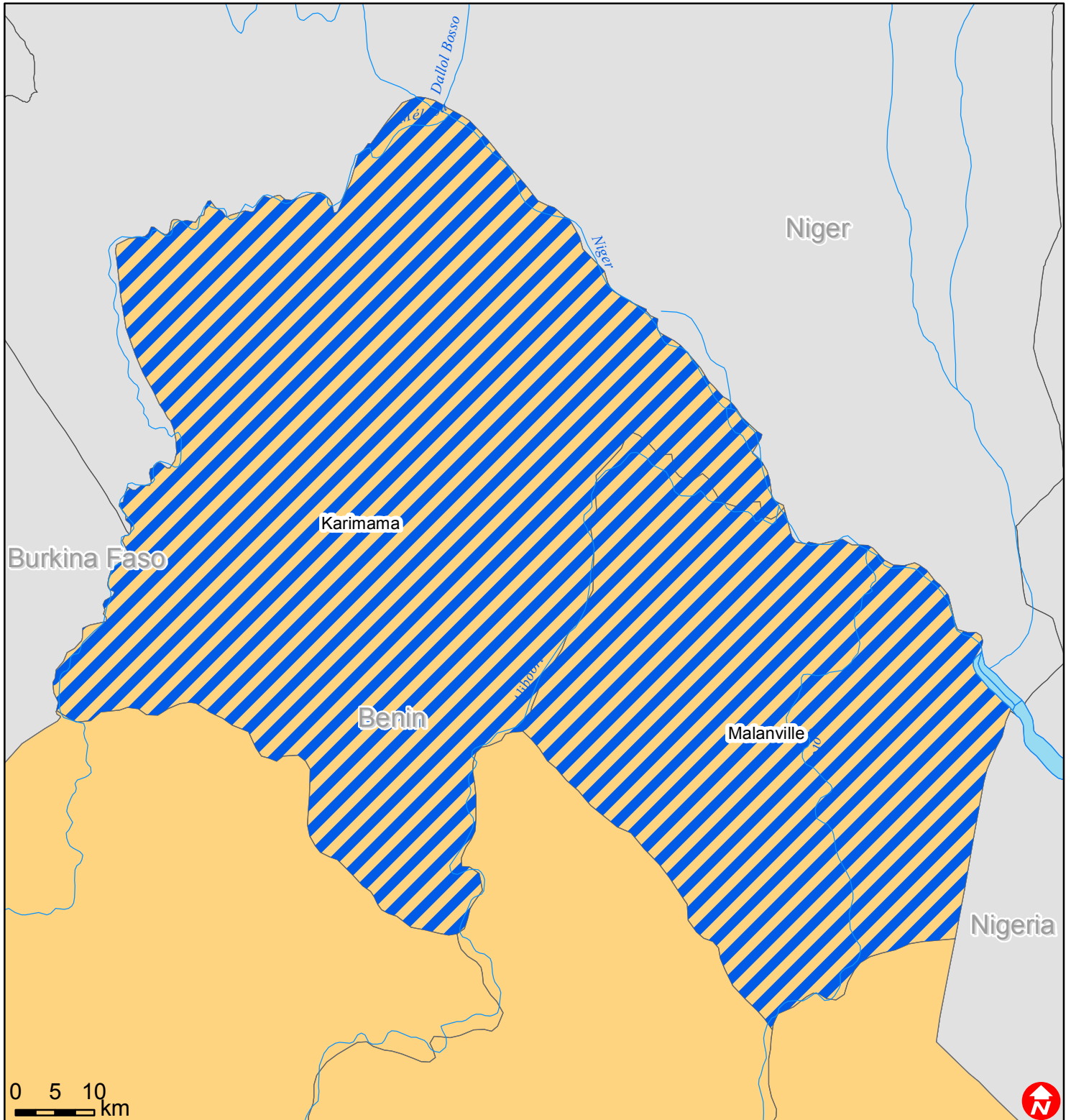
20/09/2013

Benin: Floods (MDRBJ012)

Budget Group	DREF Grant Budget CHF
Shelter - Relief	39,000
Shelter - Transitional	0
Construction - Housing	0
Construction - Facilities	0
Construction - Materials	6,000
Clothing & Textiles	20,400
Food	0
Seeds & Plants	0
Water, Sanitation & Hygiene	17,400
Medical & First Aid	0
Teaching Materials	0
Ustensils & Tools	24,000
Other Supplies & Services	0
Emergency Response Units	0
Cash Disbursements	0
Total RELIEF ITEMS, CONSTRUCTION AND SUPPLIES	106,800
Land & Buildings	0
Vehicles Purchase	0
Computer & Telecom Equipment	0
Office/Household Furniture & Equipment	0
Medical Equipment	0
Other Machinery & Equipment	1,440
Total LAND, VEHICLES AND EQUIPMENT	1,440
Storage, Warehousing	0
Distribution & Monitoring	3,000
Transport & Vehicle Costs	6,800
Logistics Services	9,000
Total LOGISTICS, TRANSPORT AND STORAGE	18,800
International Staff	10,000
National Staff	0
National Society Staff	5,800
Volunteers	14,200
Total PERSONNEL	30,000
Consultants	0
Professional Fees	0
Total CONSULTANTS & PROFESSIONAL FEES	0
Workshops & Training	11,300
Total WORKSHOP & TRAINING	11,300
Travel	9,000
Information & Public Relations	2,367
Office Costs	900
Communications	700
Financial Charges	800
Other General Expenses	0
Shared Support Services	0
Total GENERAL EXPENDITURES	13,767
Programme and Supplementary Services Recovery	11,837
Total INDIRECT COSTS	11,837
TOTAL BUDGET	193,944



Benin: Floods



 Affected areas