

www.ifrc.org
Saving lives,
changing minds.

Disaster relief emergency fund (DREF) Ghana: Floods

 International Federation
of Red Cross and Red Crescent Societies

DREF operation n° MDRGH009
GLIDE n° [FL-2013-000041-GHA](#)
18 April 2013

The International Federation of Red Cross and Red Crescent (IFRC) Disaster Relief Emergency Fund (DREF) is a source of un-earmarked money created by the Federation in 1985 to ensure that immediate financial support is available for Red Cross and Red Crescent emergency response. The DREF is a vital part of the International Federation's disaster response system and increases the ability of National Societies to respond to disasters.

CHF 168,768 has been allocated from the IFRC's Disaster Relief Emergency Fund (DREF) to support the Ghana Red Cross Society in delivering immediate assistance to up to 2,500 beneficiaries (500 households). Unearmarked funds to repay DREF are encouraged.

Summary: The rainstorms that commenced on the first week of March have taken a heavy toll on the Northern and Volta regions. To date, the rainstorms have affected at least 17 districts/ municipalities, causing extensive damage to properties and resulting in five deaths. To date, 16 districts are affected in Northern region and one district in the Volta region.



Some of the abandoned homesteads affected by the floods- Photo by GRC

Ghana Red Cross, with the support of IFRC through this DREF, will carry out basic relief items distribution, first aid, water and sanitation, as well as health and hygiene promotion activities in three districts (Tamalé metro, West Mamprusi and Gushiegu) in the northern area of the country. This will be accompanied by a detailed assessment supported by IFRC's western regional office to further assess the situation and revise this plan of action according to needs.

This operation is expected to be implemented over three months, and will therefore be completed by 16 July 2013. A Final Report will be made available three months after the end of the operation, by 30 October 2013.

<click [here](#) for the DREF budget; [here](#) for contact details; [here](#) to view the map of the affected area>

The situation

Severe rainstorms starting from the first week of March 2013 continued for close to two weeks, impacting the northern part of Ghana. The ensuing floods resulted in the displacement of community populations, loss of property and farm produce.

According to Ghana Red Cross's rapid assessment by its volunteers, the worst affected districts include Tamale Metropolitan, Gushegu, Savelugu/Nanton, Tatale/Sanguili, Yendi, Saboba, Zabzugu, Mion, East Mamprusi, Kumbungu, Chereponi, West Mamprusi, Nanumba North, Nanumba South, Sagnarigu, Tolon. The Red Cross assessment figures indicate that up to 23,000 are affected. These figures are close to the National Disaster Management Organization's (NADMO) figure of approximately 25,000 affected people in these areas. The breakdown of affected households is as follows:

NO.	DISTRICT	NO. OF FAMILIES
1	Tamale Metro	370
2	Gushegu	240
3	Savelugu/Nanton	95
4	Tatale/Sanguili	158
5	Yendi	325
6	Saboba	46
7	Zabzugu	424
8	Mion	85
9	East Mamprusi	458
10	Kumbungu	32
11	Chereponi	295
12	West Mamprusi	369
13	Nanumba North	1,385
14	Nanumba south	530
15	Sagnarigu	267
16	Tolon	113
17	Afadjato	500
	Total	5,692

The Government of Ghana declared the affected areas a disaster zone, as a result of the devastating nature of the rainstorms. The statement directed the Security Agencies and National Disaster Management Organization (NADMO) to take urgent and necessary steps to preserve life and property as well as assist the people affected by the disaster. An appeal has also been made to development partners and philanthropists to support the affected people with food, non-food items and other essential materials.

Meanwhile, on 8 April 2013, severe rainstorms caused further flooding and the destruction of property and farmlands in Agona East district in the Central region. Specific assessment figures are yet to be received but initial reports put it at not less than a 1,000 people (401 households) affected in 23 communities.

Fortunately, most of the affected have moved in to stay with relatives. While this situation has prevented sprawling shelter camps, there are concerns that it is putting a strain on the resources (food, non-food and space) of hosting relatives.

The months where heavy rains are experienced is yet to start (May onward), resulting in fears that the situation will only deteriorate further.

The government has responded with the following distributions to date:

Distribution of relief items by NADMO

FOOD ITEMS

NO.	RELIEF ITEM	DISTRIBUTED
1	Rice	275 bags(13.75mt)
2	Maize	182 bags(9.1mt)
3	Cooking Oil	40 cartons

NON-FOOD ITEMS

NO.	RELIEF ITEM	DISTRIBUTED
1	Poly mats	1,500 pcs
2	Plastic plate	2,700 pcs
3	Plastic cups	2,700 pcs
4	Plastic buckets	750 pcs
5	Plastic basins	1,000 pcs
6	Blankets	1,000 pcs
7	Mosquito nets	280 pcs
8	Laundering soap	100 cartons

Unfortunately, information on the disaggregation of relief items distributed by the government was unavailable at the time of preparing this document.

Coordination and partnerships

Starting from the time the rains were recorded, humanitarian actors (government and non-government, including the Ghana Red Cross) in the northern region who form the Regional Disaster Technical Coordinating Committee have met several times. These meetings are coordinated by NADMO to map out interventions needed and also avoid duplication.

On 27 March 2013, the NADMO convened a meeting of 20 members of the Northern Regional Platform for Disaster Risk Reduction at the Regional Coordinating Council and deliberated on the rainstorm disasters in the region. One of the actions recorded to date include field assessments, with little or no information on response at the time of preparing this document. Ghana Red Cross has been attending national-level coordination meetings on a regular basis but to date, action from partners remain slow in coming.

Red Cross and Red Crescent action

Ghana Red Cross quickly mobilized its volunteers to assist affected communities through the following activities:

1. rescue and evacuations
2. first aid and referrals where needed
3. community sensitization on health and hygiene
4. environment clean ups
5. rapid assessments

Ghana Red Cross was supported by Swiss Red Cross with 500 family kits and CHF 15,000 (for logistics and field activities) to assist 500 of the most vulnerable displaced families in Gushegu, Yendi and West Mamprusi districts. Beneficiary ration cards have been produced for the registration and distribution of the items to these families. A total of 30 community-based Ghana Red Cross volunteers have been recruited and specially trained to carry out the exercise.

The needs

Through the rapid assessment conducted, the National Society determined pressing needs for family kits (soaps & sanitizers), blankets, mats, plastic buckets, clothing, and food. Emergency assistance to be met through this operation includes distribution of limited non-food items.

As further information is required, this DREF will also be used to support a more detailed assessment to inform this plan of action, which will be revised accordingly to meet the evolving needs of the most affected households, including needs for emergency shelter.

Beneficiary selection criteria to identify the most vulnerable displaced households, with a focus on women- and child-headed households, elderly and the physically handicapped, will be developed and disseminated to the volunteers receiving focused health and hygiene promotion orientation. This will lead to a targeted registration of beneficiaries who will receive assistance in the coming weeks, in each target area. The assistance delivered through this DREF operation will complement the 500 family kits provided by the Swiss Red Cross.

Meanwhile, information, education and communication materials/PHAST toolkits, radio jingles and house-to-house visits strategy will be used to conduct the health and hygiene promotion activities.

The proposed operation

Ghana Red Cross, with support from IFRC, aims to deliver immediate assistance to 500 affected families in three districts in the form of selected non-food items, water and sanitation as well as health and hygiene promotion activities. Concurrently, IFRC's West Coast Regional office will deploy a resource person to support the National Society to conduct further detailed assessments to determine if any further modifications are required to this proposed operation, based on the evolving situation on the ground. The regional resource person will also provide close technical support to the Ghana Red Cross team for the quality implementation of the flood DREF Plan of Action

Emergency shelter and non-food items

Outcome: The vulnerability of 500 flood-affected households is reduced through the provision of basic household and emergency shelter items.

Output (Expected results)	Activities planned
Up to 500 households receive non-food items including mosquito nets and blankets according to assessment and selection criteria	<ul style="list-style-type: none"> Select and train volunteers Identify and register beneficiaries Distribute 2 each of mosquito nets and blankets to the targeted households Monitor, evaluate and report on the distribution activities and findings.

Water, sanitation, and hygiene promotion

Outcome: The risk of waterborne and water related diseases is reduced through the provision of safe water, adequate sanitation as well as hygiene promotion to 500 households in Tamalé metro, West Mamprusi and Gushingu.

Expected results	Activities planned
<ul style="list-style-type: none"> Selected households are provided with drinking water which meets SPHERE standards in terms of quantity and quality Appropriate sanitation is provided to strategic locations Selected households are served by hygiene promotion activities which meet SPHERE standards in terms of implementation and the identification and use of hygiene items Selected households are provided with and trained in the proper use water storage containers, soap, household water treatment and water purification tablets/sachets 	<ul style="list-style-type: none"> Procure, transport and distribute jerry cans, buckets and soaps Public demonstration on household water treatment using water treatment tablets and safe water storage Procure and distribute water treatment tablets to cover target beneficiary needs over three months Produce emergency PHAST tool kits for volunteers Conduct PHAST in emergency training and supervisors orientation Organize hygiene promotion sessions including promotion of personal and environmental sanitation in communities Rehabilitation of two communal and/or institutional latrines Provision of up to 100 emergency latrines where applicable. Coordinate with partners involved in water and sanitation activities Monitoring and reporting on activities

Emergency health

Outcome: : Reduce health risks, morbidity and mortality as a result of the emergency on the affected population through the provision of health promotion, preventive, community-level and referral services to families in affected areas for three months.

Output (Expected results)	Activities planned
<ul style="list-style-type: none"> Reduction of mortality and morbidity of beneficiaries as a result of floods are prevented and health services are supported through a primary health care oriented programme. 	<ul style="list-style-type: none"> Train up to 30 community-based volunteers on health promotion as well as proper utilization of mosquito nets. Distribute two mosquito nets per family. Produce information, education and communication (IEC) materials for distribution. Distribute IEC materials concurrently with organized health promotion campaigns.

	<ul style="list-style-type: none"> • Conduct health promotion campaigns within the affected population focusing on malaria and water-borne diseases, targeting 500 households in affected areas. • Provide first aid and referral services for affected communities • Monitoring and reporting on activities
--	---

Logistics

Outcome: Non-food items are delivered to affected families in a timely and effective manner.	
Output (Expected results)	Activities planned
<ul style="list-style-type: none"> • Relief items are procured and delivered timely, properly stored and distributed 	<ul style="list-style-type: none"> • Procure and distribute relief stocks and controlling supply movements to end user in accordance with IFRC procurement standards • Monitor and evaluate relief activities and reporting on the relief distributions • Facilitate appropriate warehousing and transportation to distribution points

Assessment

Outcome: Emergency needs of flood-affected families are identified and gaps documented, leading to revision of the operation's plan of action	
Output (Expected results)	Activities planned
<ul style="list-style-type: none"> • Detailed assessment is carried out across all sectors and the operation plan of action is revised appropriately to address outstanding needs 	<ul style="list-style-type: none"> • Deploy a technical specialist to support National Society in planning and managing a detailed assessment including household visits and key informant interviews • Identify outstanding needs and gaps in consultation with local authorities and other stakeholders • Revise plan of action and budget

Monitoring and evaluation

Ghana Red Cross will have the overview and management the implementation of this operation, working closely with its branch structure. The National Society will compile regular operation reports which will be submitted to the IFRC West Coast regional office.

The IFRC West Coast regional office will also deploy a full time regional resource person to closely follow up the implementation of the DREF in the country while more technical support and back up will come from the regional representation in Abidjan. IFRC will facilitate an operation review and lessons learnt workshop. This review aims to analyze how the operation was designed and implemented, aiming to build capacity for future operations.

Contact information

For further information specifically related to this operation please contact:

- **In Ghana:** Kofi Addo, Secretary General, Ghana Red Cross Society, +233 0206983284, email: kofiaskaddo@hotmail.com / redcrossghana@yahoo.com
- **IFRC Regional Representation:** Daniel Sayi, Regional Representative, West Coast, Abidjan, Côte d'Ivoire office phone; +225 66 775 261 ; email: daniel.sayi@ifrc.org
- **IFRC Zone:** Daniel Bolanos, Disaster Management Coordinator, Nairobi, Tel. +254 20 2835 213 / Fax +254 20 271 2777; email: daniel.bolanos@ifrc.org
- **IFRC Geneva:** Christine South, Operations Support; phone: +41 227 304 529; email: christine.south@ifrc.org
- **IFRC Zone Logistics Unit (ZLU):** Rishi Ramrakha, Head of zone logistics unit; Tel: +254 733 888 022/ Fax +254 20 271 2777; email: rishi.ramrakha@ifrc.org

For Resource Mobilization and Pledges:

- **IFRC West and Central Africa hub:** Elisabeth Seck, Resource Mobilization Officer, Dakar; phone: +221 33 869 36 60; mobile: +221 77 450 59 49; email: elisabeth.seck@ifrc.org

For Performance and Accountability (planning, monitoring, evaluation and reporting):

- **IFRC Zone:** Robert Ondrusek, PMER/QA Delegate, Africa phone: +254 731 067 277; email: robert.ondrusek@ifrc.org

How we work

All IFRC assistance seeks to adhere to the Code of Conduct for the International Red Cross and Red Crescent Movement and Non-Governmental Organizations (NGOs) in Disaster Relief and the Humanitarian Charter and Minimum Standards in Disaster Response (Sphere) in delivering assistance to the most vulnerable.

The IFRC's vision is to inspire, encourage, facilitate and promote at all times all forms of humanitarian activities by National Societies, with a view to preventing and alleviating human suffering, and thereby contributing to the maintenance and promotion of human dignity and peace in the world.

www.ifrc.org
Saving lives, changing minds.



The IFRC's work is guided by Strategy 2020 which puts forward three strategic aims:

1. Save lives, protect livelihoods, and strengthen recovery from disaster and crises.
 2. Enable healthy and safe living.
 3. Promote social inclusion and a culture of non-violence and peace.
-

DREF OPERATION

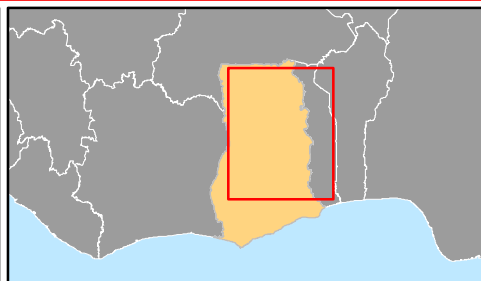
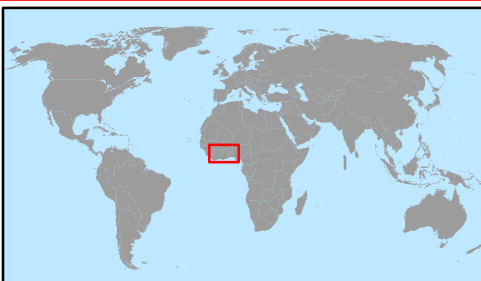
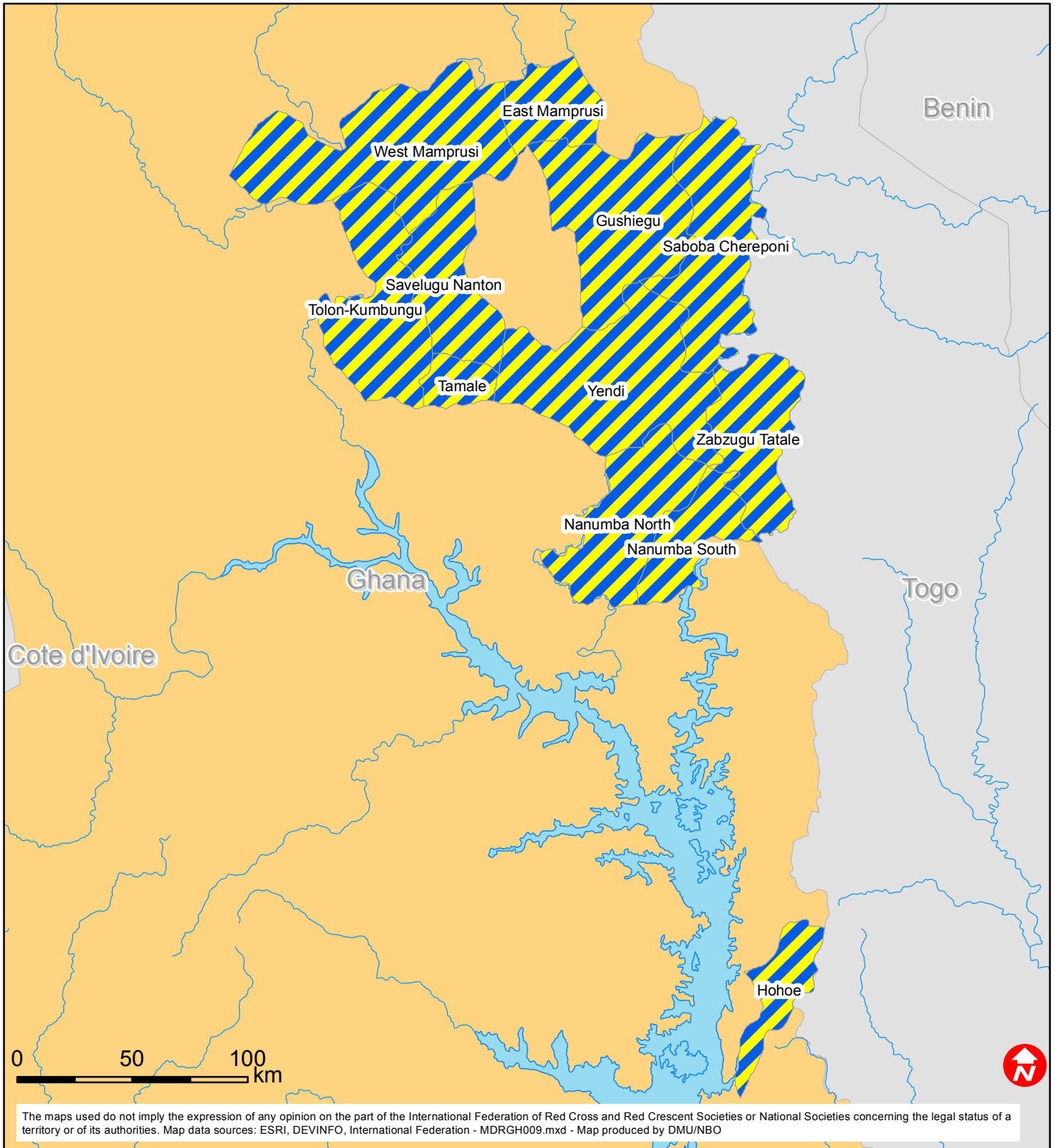
18-04-13

MDRGH009 Ghana:Floods

Budget Group	DREF Grant Budget CHF
Clothing & Textiles	40,000
Water, Sanitation & Hygiene	30,060
Medical & First Aid	1,850
Teaching Materials	2,400
Ustensils & Tools	4,500
Total RELIEF ITEMS, CONSTRUCTION AND SUPPLIES	78,810
Transport & Vehicle Costs	19,150
Logistics Services	2,800
Total LOGISTICS, TRANSPORT AND STORAGE	21,950
International Staff	10,000
National Society Staff	7,328
Volunteers	14,500
Total PERSONNEL	31,828
Workshops & Training	9,000
Total WORKSHOP & TRAINING	9,000
Travel	9,000
Information & Public Relations	3,140
Office Costs	1,500
Communications	2,240
Financial Charges	1,000
Total GENERAL EXPENDITURES	16,880
Programme and Supplementary Services Recovery	10,300
Total INDIRECT COSTS	10,300
TOTAL BUDGET	168,768



Ghana: Floods



 Flood-affected areas