

www.ifrc.org
Saving lives,
changing minds.

DREF operation update

Pakistan: Earthquake in Balochistan

 International Federation
of Red Cross and Red Crescent Societies

DREF operation n° MDRPK009
GLIDE n° [EQ-2013-000121-PAK](#)
Operation update n°1
18 October 2013

The International Federation of Red Cross and Red Crescent (IFRC) Disaster Relief Emergency Fund (DREF) is a source of un-earmarked money created by the Federation in 1985 to ensure that immediate financial support is available for Red Cross and Red Crescent emergency response. The DREF is a vital part of the International Federation's disaster response system and increases the ability of National Societies to respond to disasters.

Period covered by this update:
30 September to 14 October 2013.

Summary: CHF 154,425 was allocated from the IFRC's Disaster Relief Emergency Fund (DREF) on 30 September, 2013 to support the National Society in delivering assistance to some 7,000 beneficiaries.

An earthquake of 7.7-magnitude hit the southwestern region of Pakistan on Tuesday 24 September 2013 at 16:29 hrs. Pakistan Standard Time (PST) with a focal depth of 10 kilometers (kms), followed by another earthquake of 7.2 Magnitude, affecting approximately 30,000 families (200,000 persons).

Pakistan Red Crescent Society (PRCS) is on the ground after initial assessments, currently providing basic relief and emergency health services to the affected people. IFRC, in supporting PRCS, is closely monitoring the situation and coordinating with the International Committee of Red Cross (ICRC) and other PNSs present in the country to ensure resources and support services are available for the operation.



PRCS is on the ground after initial assessments and is currently providing assistance to the earthquake affected population. **Photo:** PRCS.

This DREF operation is supporting PRCS relief operations to deliver immediate assistance to the population affected by the earthquake with the provision of emergency health services and distributions of food packets, non-food items (NFIs) and emergency shelter supplies. The NFIs and shelter supplies are being provided out of existing PRCS pre-positioned stocks. The DREF covers food items, transport and distribution of food and NFIs. The DREF does not cover the replenishment of NFIs.

This operation is expected to be implemented over three months, and will therefore be completed by December 2013; a final report will be made available three months after the end of the operation (by March 2014).

[<click here for the DREF budget; here for contact details>](#)

The situation

A 7.7-magnitude earthquake hit the southwestern region of Pakistan on Tuesday 24 September 2013 at 16:29hrs Pakistan Standard Time (PST) with a focal depth of 10 kilometers (kms), followed by another earthquake of 7.2 magnitude four days later on the 28 September, in addition to a series of lesser magnitude aftershocks aggravating the already serious impacts. The epicenter lies in a thinly populated mountainous area of Balochistan province (approximately five persons per square km), 66 kms north-east from Awaran district capital, with tremors felt in neighboring Sindh province, but also as far as India, Iran, UAE and Oman. The eight affected districts in Balochistan province included Kech (also known as Turbat), Panjgor, Chagi, Khuzdar, Gawadar, Kharan, Washok and Awaran. Awaran district has been most severely impacted with all three Tehsils of Awaran, Mashkay and Jhaho affected.

The Provincial Disaster Management Authority (PDMA) of Balochistan has reported 393 people dead and another 824 people injured (as of 14 October, 2013, from Awaran and Kech districts). Although the extent of the damages and losses are yet to be fully confirmed, the latest information indicates 30,000 families (200,000 people) have been affected by the earthquake. Many of the affected persons were forced to live without shelter under temperatures reaching 33-38 degrees Celsius during the day, in addition to concerns with the rapidly approaching winter season.

Based on the joint assessment conducted by 11 non-governmental organizations (NGOs), the devastating earthquake affected more than 27,000 households (138,000 people) and damaged or destroyed nearly 20,000 houses. While the Balochistan PDMA estimated at least 30,000 families (200,000 people) have been affected by the earthquakes¹

In Tehsil Mashkai and Awaran (of Awaran District), the earthquake left the vast majority of the already stretched health facilities damaged and non-functional. In Awaran, seven Basic Health Units (BHU) are affected. Of these, three were fully damaged and two were partially damaged, while only two BHUs are intact and functioning. Additionally, eight civil dispensaries in Tehsil Awaran are damaged and no proper health care services are available in that area.² The District Head Quarters (DHQ) Hospital in Awaran has been providing health care services to the affected people with the support of medical staff from different organisations, including PRCS.

The Balochistan provincial government and law enforcement agencies have restricted access to all International NGO's from the affected areas as the security in these areas were considered unstable due to the long-standing Baloch independence struggle. A number of local organizations are able to provide assistance in addition to the government and security forces. The humanitarian assistance movements in the area are controlled by the Frontier Constabulary armed escort system and any identification of logos from outside the area are discouraged. Several attack incidents have been reported, including on a helicopter as well as a medical team on their way to the affected areas in the early phase of the emergency relief operation, fortunately there was no serious harm.³ In addition, PRCS vehicles were vandalized by local community members during the relief operation, where the word 'Pakistan' was scratched from PRCS vehicle logos without further incident to the team or vehicles. No casualty was reported in these incidents; however security concerns for humanitarian response in the affected areas is hampering the ability to provide assistance to the affected populations by the earthquake.⁴

¹ http://reliefweb.int/sites/reliefweb.int/files/resources/Pakistan_Humanitarian%20Bulletin_October%202013.pdf

² WHO Health Situation Report No 4 dated Oct 3, 2013

³ <http://abcnews.go.com/International/wireStory/pakistan-struggles-quake-victims-271-dead-20367620>

⁴ Additional information available: <http://www.ifrc.org/docs/Appeals/rpts13/IBPKec27091302.pdf>

Coordination and partnerships

From the onset of the earthquake PRCS took the lead in the preparation of the interventions and the coordination among the partners, supported by the IFRC. Regular briefings were being organized in the operational centre of the Disaster Management and Logistical Unit (DMLU).

The PRCS maintains direct contact with the National Disaster Management Authority (NDMA) and PDMA. The Federation maintains the contacts with international humanitarian community. OCHA has been sent reports on the PRCS assessments and activities.

The PRCS disseminates regular response updates to the Red Cross Red Crescent Movement Partners in-country, whilst the IFRC is in regular contact with the PNSs and ICRC to support a coordinated response support to PRCS.

The Pakistan Army and law enforcement agencies have conducted search and rescue efforts with the assistance of helicopters to reach the hilly and difficult to access areas, providing relief and mobilizing medical teams and medicines and evacuating around 110 injured people from the affected areas. Affected population with serious injuries have been transported to Karachi and neighboring districts.

In response to the immediate needs of the affected population, the PDMA, NDMA and the armed forces have dispatched non-food items (NFIs) and food items to Awaran district primarily⁵.

The Government health department has mobilized support services comprising of:

- 52 doctors and 71 paramedic staff, in addition to supply of medicines (supported by PDMA Sindh and Balochistan, MSD, Sandeman Hospital and provincial health department).
- 31 ambulances deployed in Awaran, out of which 23 are from EDHI Foundation Karachi.
- Ten other trucks and vehicles providing services (Government, PDMA, EDHI, Chandka Hospital Larkana).
- Five Emergency health kits (with a capacity of 1,000 persons each) and 100 trauma kits.

A number of local organisations with pre-existing presence in the area or the region are responding with assistance to the earthquake affected people. These included HANDS, the Institute for Development Studies and Practices (IDSP), the National Commission for Human Development (NCHD), the Helping Hand for Relief and Development (HHRD), Al-Khidmat Foundation, the Friendship International (Fi), the National Rural Support Programme (NRSP), Today's Women, and the Islamic Relief. The Awaran District Response Forum convenes regularly to coordinate needs and response operations.

Relief items	Quantity
Tent	33,899
Blanket	14,425
Plastic mat	19,590
Mosquito net	11,000
Jerry can	400
Water bottle	14,890
Food packets	98,277

⁵ <http://www.pdma.gov.pk/wp-content/publication/Earthquake2013/SituationReport18.pdf> and <http://www.ndma.gov.pk/Ex/Documents/9-10-2013Situationreport.pdf>

Other humanitarian actors continue to monitor developments and stand ready to support the Government's efforts to assist the earthquake affected population if needed. The World Health Organization (WHO) has provided kits for the delivery of emergency primary health care services for 100,000 people, and the World Food Programme (WFP) has arranged for the delivery of high energy biscuits⁶.

The Government of Pakistan has not requested for international assistance at this stage.

Red Cross and Red Crescent action

Progress towards outcomes

The operation has so far delivered immediate assistance through the provision of food packets, NFIs, emergency shelter supplies, and emergency health services. The food packets are being procured locally while the NFIs and shelter supplies are being provided out of PRCS pre-positioned stocks.

Relief distributions (food and basic non-food items)

Outcome 1: The basic food and essential household needs of 1,000 earthquake affected families (approx. 7,000 people) are met in the affected districts (Awaran, Kech/Turbat) of Balochistan province.

Output 1.1: 1,000 earthquake affected families (approx. 7,000 people) have received basic food assistance.

Activities planned:

- Conduct rapid emergency needs assessment.
- Selection and verification of 1,000 families with community participation in planning and distribution process.
- Procurement, warehousing, and transportation of 1,000 food parcels at distribution sites according to distribution plan.
- Provide assistance to 1,000 families through distribution of food parcels.
- Establish a beneficiary feedback and monitoring system for the continuous improvement of the delivery system.
- Monitor and evaluate the relief activities and provide reporting on the distributions.

⁶ <http://www.unocha.org/pakistan>

Output 1.2: 1,000 earthquake affected families (approx. 7,000 people) have been assisted with emergency shelter and essential household items which will be deployed from PRCS pre-positioned stock.

Activities planned:

- Conduct rapid emergency needs assessment.
- Selection and verification of 1.000 families with community participation in planning and distribution process.
- Mobilization of existing DP stocks from PRCS warehouse, to distribution sites according to distribution plan.
- Provide assistance to 1.000 families through distribution of emergency shelter and essential household items.
- Establish a beneficiary feedback and monitoring system for the continuous improvement of the delivery system.
- Monitor and evaluate the relief activities and provide reporting on the distributions.

Progress:

Full rapid assessments by Red Crescent staff and volunteers were hindered due to security concerns on the ground, however, the worst affected and under-served communities have been identified in consultation with the local government and other humanitarian actors providing relief assistance in the areas.

The DREF covers relief assistance including basic food, emergency shelter and essential household items for 1,000 families (7,000 individuals) in the affected districts of Awaran and Kech/Turbat in Balochistan province. PRCS mobilized its Disaster Preparedness (DP) stocks (emergency shelters and essential household items) to the Awaran district from PRCS Quetta (Balochistan) and Karachi (Sindh) warehouses, and distributed amongst the identified beneficiaries. On top of this, PRCS has received in-kind donation of 183 food parcels⁷ (61 kg per family⁸ for 14 days as per PRCS's 2013 Floods Contingency Plan) as well additional support to procure 1,000 food parcels. The procurement of the second 1,000 food parcels has been completed with the support of IFRC and delivered on 14 October 2013 to the PRCS warehouse in Karachi, for onward dispatch and distribution shortly to identified beneficiaries⁹.

To summarize the progress of relief distribution, to date PRCS has reached 2,183 families (15,281 people) with relief items, within these families, 2,000¹⁰ of them received emergency shelter and essential household items and 1,183 with food¹¹.

The relief distributions have been carried out by six PRCS staff members, four PRCS volunteers and the assistance of local communities/ labourers. PRCS NHQ has also deployed three national disaster response team (NDRT) members (one from PHQ, and two from the operational areas) for monitoring and facilitation during the relief response operation.

⁷ Contribution from a mobile telecommunication company ZONG.

⁸ Each family comprises of an average of 7 people.

⁹ PRCS has received bilateral assistance from China Red Cross (USD 100,000, Chinese Embassy staff (PKR 1.2 million), Republic of Korea (USD 200,000), and Iranian Red Crescent Society (400 tents, 1,500 blankets and 400 pieces of Moquette)

¹⁰ Supporting breakup of distributed items is mentioned in the relief distribution progress table (Table 2)

¹¹ 1,000 families are same already assisted with emergency shelter and essential household items

Table 2: Summary of PRCS relief distribution (food, emergency shelter and essential household items) as of 13 October 2013.

Date	Union Council	Village/Area	# of Families Reached	Distribution of Food Parcels		Distribution of Emergency Shelter			Distribution Non-Food Items						
				PRCS Standard Food Parcels ¹²	PRCS Non-Standard Food Parcels	Tent	Tarpaulin	Shelter Tool Kit	Blankets	Mosquito Nets	Hygiene parcel	Jerry cans	Kitchen Set	Stove	Hurricane Lamp
1-Oct-13	Awaran	Labaach	300	-	-	300	300	300	1,500	600	300	300	300	300	300
2-Oct-13			200	-	-	200	200	200	1,000	400	200	200	200	200	200
2-Oct-13	Teertej	Teertej	500	-	-	500	500	500	2,500	1,000	500	500	500	500	500
5-Oct-13	Awaran	Dhal Bedi (Liaqat Bazar)	290	-	-	-	290	290	1,450	290	290	290	290	290	290
5-Oct-13			210	-	-	-	210	210	1,050	210	210	210	210	210	210
8-Oct-13	Teertej	Malang	183	183	-	-	-	-	-	-	-	-	-	-	-
8-Oct-13	Awaran	Bazdad	500	-	-	-	500	500	2,500	500	500	500	500	500	500
9-Oct-13	Awaran	Labach (Din M., Sarfarz, Gehan, Khan M., Barkat, Barfi, Mir Mosa Bazars & Dhansar)	-	1000	-	-	-	-	-	-	-	-	-	-	-
			2,183	1,183	-	1,000	2,000	2,000	10,000	3,000	2,000	2,000	2,000	2,000	2,000

Challenges:

- Limited access to the affected areas due to the sensitive and volatile security situation, government access restrictions, damaged and poor infrastructure, and the remoteness of the affected areas are hampering relief activities as well as the ability to conduct full formal rapid assessments. Scarcity of transport and safe storage options in Awaran continues to pose a challenge. One of the factors that are adding to this problem is the condition of the roads/tracks from Awaran city to other affected areas, and uncollected debris of the earthquake have worsened the already unpaved roads.
- Due to lack of availability, as well as the reluctance to present national Identity cards, beneficiary distribution lists are being re-verified with the assistance of community representatives and endorsed by the District Coordination Officer (DCO), per the request for flexibility by the PDMA to facilitate timely assistance to the affected people.

¹² PRCS Standard Food package(61kg) contents are: 20kg of wheat flour, 15kg of rice, 6kg of split chickpea pulse, 6kg of pink lentils, 1kg of salt, 1kg of tea, 7kg of sugar and 5kg of ghee.

Emergency health

Outcome: Immediate health risks of the earthquake affected population are reduced.
Outputs: Basic curative and preventive health services are provided through mobile medical services.
Activities planned:
<ul style="list-style-type: none"> • Conduct rapid health assessments and monitor evolving situation. • Deploy to and operate mobile medical units in severely affected but underserved areas. • Refer severe/critical cases to appropriate health facilities. • Coordinate with district health department/authorities and health partners.

Progress:

PRCS initially deployed one health team via helicopter from PHQ Sindh (comprising of two doctors and four paramedics) for provision of emergency health services in the affected district of Awaran, arrived on the third day of the earthquake and provided services for one-week period. Two teams joined from the provincial branch of Balochistan and continually to be operational on the ground, one team is supporting the District Headquarter (DHQ) hospital in Awaran and the second team is providing services as a mobile health unit (MHU), with each team comprising of one doctor and two paramedics. To date, PRCS health teams have reached 3,207 persons; most of the cases presented were acute respiratory tract infections and diarrhoea. Teams also report concern over existing levels of malnutrition, poor living conditions, lack of safe drinking water and sanitation in the area, posing a serious threat to the affected populations.

Table 3: Summary of people reached through PRCS emergency health services in Awaran district.

Date	Tehsil Awaran, Area		Number of patients				Remarks
	Union Council	Village/location	Children (under 15)	Male	Female	Total	
27-Sep-13	Awaran	DHQ Hospital	120	195	85	400	Emergency ward
28-Sep-13	Awaran	Labaach, Pirander and DHQ	62	161	154	377	OPD and MHU
29-Sep-13	Awaran	Shagazai, Qasimijoe and DHQ	-	78	226	304	OPD and MHU
30-Sep-13	Awaran	DHQ Hospital	-	89	89	178	OPD
1-Oct-13	Awaran & Teertej	Teertej and DHQ	-	142	129	271	MHU
2-Oct-13	Awaran	Labach and DHQ	-	131	119	250	OPD and MHU
3-Oct-13	Awaran	Rehmat Bazar and DHQ	-	115	136	251	OPD and MHU
4-Oct-13	Awaran	Dhansar and DHQ	199	40	33	272	OPD and MHU
5-Oct-13	Awaran	Pirander and DHQ	116	27	32	175	OPD and MHU
6-Oct-13	Awaran	Bazdad and DHQ	108	23	33	164	OPD and MHU
7-Oct-13	Awaran	Ghulam Qadir Bazar and DHQ	155	16	24	195	OPD and MHU
8-Oct-13	Teertej	Machi Cheri, Machi Seri and DHQ	127	11	26	164	OPD and MHU
9-Oct-13	Awaran	Labach (Dhansa) and DHQ	69	6	15	90	OPD and MHU
10-Oct-13	Awaran	Labach and DHQ	80	13	23	116	
Total			1,036	1,047	1,124	3,207	

Challenges:

Security concerns and the lack of availability of, female medical health care providers is a significant challenge in the affected areas to reach women with a fuller female oriented package of health services.

Logistics

Progress: Logistics support is provided to the operation to ensure the efficient and timely delivery of assistance and services to the affected by the earthquake. NFIs are being supplied by PRCS pre-positioned stocks and are planned to be replenished following IFRC procurement procedures, although this DREF is not funding the replenishment. In regards to food items, PRCS has completed the procurement of 1,000 food parcels with the support of other bilateral assistance; whilst IFRC is providing support for the procurement of another 1,000 standard PRCS food parcels through this DREF. The food parcels have been dispatched by the supplier to the Karachi (Sindh) warehouse after completing lab tests for quality and safety assurance. PRCS has sufficient in-country stocks and thus will only seek replenishment of the distributed food items.

Table 4: Summary of PRCS relief items dispatch to the target area.

Item Name	Stock dispatched from PHQ Quetta (Balochistan) to target area		Stock dispatched from NHQ WH Karachi (Sindh) to target area	Total stock dispatched to target area
	1 st phase	2 nd phase		
Family tent	1,000			1,000
Blanket	5,000	5,000		10,000
Tarpaulin sheet	1,000		1,000	2,000
Kitchen set	1,000		1,000	2,000
Hurricane lamp	1,000		1,000	2,000
Stove	1,000	1,000		2,000
Jerry can	1,000		1,000	2,000
Hygiene Kit	1,000		1,000	2,000
Shelter Tool Kit	1,000	1,000		2,000
Mosquito net	2,000	1,000		3,000

Contact information

For further information specifically related to this operation please contact:

Pakistan Red Crescent Society:

- Mr. Mahboob Sardar, Secretary General, phone: +92 51 925 0407; email: mahboob@prcs.org.pk
- Mr. Ghulam Muhammad Awan, Director of Operations, phone +92 51 444 8311; email: dirops@prcs.org.pk

IFRC Country Office, Islamabad:

- Mr. Jaap Timmer, Acting Head of Delegation, phone: +92(0)51 925 0416/17; email: jaap.timmer@ifrc.org

IFRC South Asia regional office:

- Simon Missiri, Head of Regional Office, phone: +91 11 26154021 to 24, fax: +91 11 26154025; email: simon.missiri@ifrc.org

IFRC Asia Pacific zone office:

- Al Panico, Head of Operations, phone: + 603 9207 5700; email: al.panico@ifrc.org
 - Karen Poon, Operations Coordinator, phone: +603 9207 5798, mobile: +6013 360 0366; email: karen.poon@ifrc.org
 - Florent Chané, Zone Logistics Coordinator; email: florent.chane@ifrc.org
 - Martine Zoethoutmaar, Relationship Manager; email: martine.zoethoutmaar@ifrc.org
 - Abaid Ullah Khan, DMU Surge Support Officer, mobile: +6012 230 8695; email: muhammadabaid.khan@ifrc.org
- Please send all pledges for funding to zonerm.asiapacific@ifrc.org



Click here

1. **[here](#)** to DREF budget and map **[below](#)**
2. **[Return](#)** to the title page

How we work

All IFRC assistance seeks to adhere to the [Code of Conduct for the International Red Cross and Red Crescent Movement and Non-Governmental Organizations \(NGOs\) in Disaster Relief](#) and the [Humanitarian Charter and Minimum Standards in Disaster Response \(Sphere\)](#) in delivering assistance to the most vulnerable.

The IFRC's vision is to inspire, encourage, facilitate and promote at all times all forms of humanitarian activities by National Societies, with a view to preventing and alleviating human suffering, and thereby contributing to the maintenance and promotion of human dignity and peace in the world.

www.ifrc.org

Saving lives, changing minds.



The IFRC's work is guided by [Strategy 2020](#) which puts forward three strategic aims: Save lives, protect livelihoods, and strengthen recovery from disaster and crises.

1. Enable healthy and safe living.
 2. Promote social inclusion and a culture of non-violence and peace.
-

DREF OPERATION

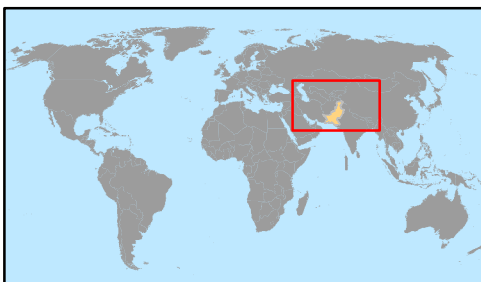
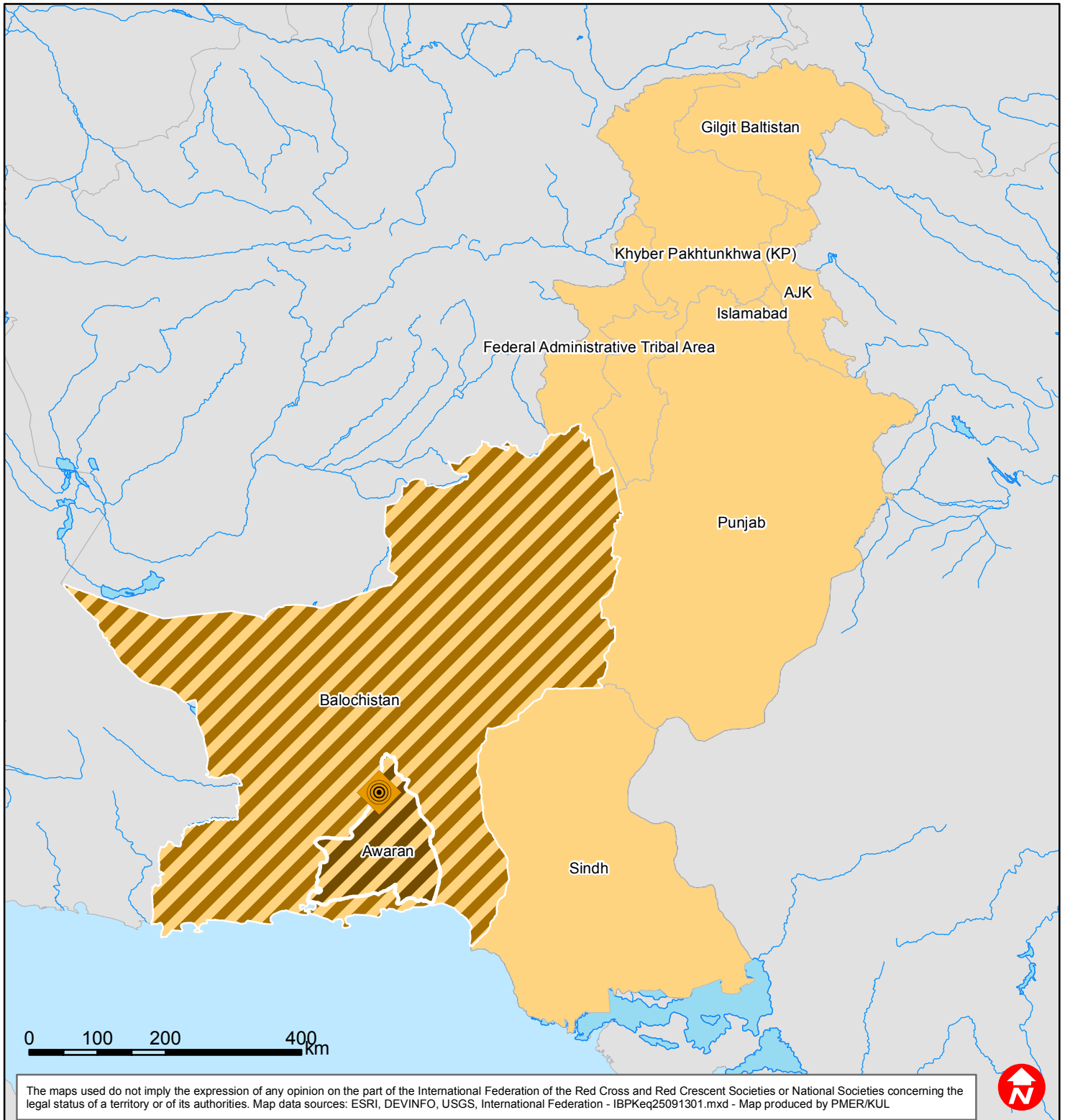
30/09/2013

MDRPK009 Pakistan: Earthquake in Balochistan

Budget Group	DREF Grant Budget CHF
Food	47,000
Medical & First Aid	10,000
Total RELIEF ITEMS, CONSTRUCTION AND SUPPLIES	57,000
Dsitribution & Monitoring	20,000
Transport & Vehicle Costs	49,000
Logistics Services	3,000
Total LOGISTICS, TRANSPORT AND STORAGE	72,000
National Staff	8,000
Volunteers	5,000
Total PERSONNEL	13,000
Communications	3,000
Total GENERAL EXPENDITURES	3,000
Programme and Supplementary Services Recovery	9,425
Total INDIRECT COSTS	9,425
TOTAL BUDGET	154,425



Pakistan: Earthquake 2013



 7.7 Magnitude Earthquake

 Affected area

 Affected province