

www.ifrc.org
Saving lives,
changing minds.

Emergency Plan of Action (EPoA) Tanzania: Flash Floods

 International Federation
of Red Cross and Red Crescent Societies

DREF Operation	Operation n° MDRTZ015; Glide n° FF-2014-000009-TZA
Date of issue: 1 February, 2014	Date of disaster: 21 January, 2014
Operation manager (responsible for this EPoA: Holger Leipe	Point of contact (name and title): Joseph Kimaryo, Director, Disaster Management, Tanzania RC
Operation start date: 31 January, 2014	Expected timeframe: Three months
Overall operation budget: CHF 180,676	
Number of people affected: 10,000	Number of people to be assisted: 2,000
Host National Society presence (n° of volunteers, staff, branches): Tanzanian Red Cross: 50 volunteers, 5 staff, 3 branches	
Red Cross Red Crescent Movement partners actively involved in the operation: IFRC. Spanish Red Cross, American Red Cross present in country.	
Other partner organizations actively involved in the operation: UNICEF, Government of Tanzania, Caritas, Islamic Foundation (food relief items support to government)	

A. Situation analysis

Description of the disaster

During the night of 21st January 2014, heavy rains caused flash floods in Dumila/Dakawa area in Morogoro region, located approximately 270 kms West of Dar Es Salaam City. Initial information received on 22nd January reported of population displacements, extensive damages to infrastructure (roads, bridges, houses, schools, other public and religious buildings), and fields for crops. One person has been reported dead so far.

A rapid assessment has been undertaken by the Tanzanian Red Cross (TRCS) National Society estimating that the number of displaced persons is more than 10,000. The worst affected district is Kilosa, where the displacement has taken place. The total number of affected villages is not yet confirmed due to geographical disperse areas and inaccessibility. According to situation updates by the assessment team at Magore village, most public buildings (schools, churches, mosques) along the Morogoro-Dodoma highway have been submerged.

A key bridge on the highway that links Dar es Salaam City and Central/West Tanzania has been washed away by the floods leaving thousands of stranded road travellers. It is estimated that hundreds of houses in the areas affected have been brought down/flattened by the floods. The houses downstream were washed away and many others were flooded with mud and water destroying houses and belongings of people. There is massive destruction of fields and crops.

Some of the displaced families have been hosted by relatives and friends, others are temporarily accommodated in schools/classrooms, and the majority is on safer/higher open grounds. Many of the households are currently staying out in the open, exposed to the weather conditions, including vulnerable individuals (elderly, pregnant women and small children etc.).

Summary of the current response

Overview of Host National Society

TRCS has many years of experience in responding to disaster situations, and has a core team within the national society trained in disaster management, preparedness, early warning etc.

TRCS dispatched on Wednesday 22nd January, 2014 a team of three National Disaster Response Team (NDRT) Members to carry out a rapid needs and damage assessment of the prevailing situation to enable informed subsequent decisions and actions.

TRCS initial response included supporting the police in search and rescue, first aid services, distribution of non-food relief items. Thursday 23rd January 2014, the NS dispatched an initial consignment of non-food relief items comprising of 300 blankets, 300 mosquito nets, 300 water buckets, 300 water jerry cans and WaterGuard purification tablets from its disaster preparedness stocks (DP). Part of this distribution is included in this DREF operation for replenishment (blankets and mosquito nets). (The jerry cans, buckets and water purification tablets will be replenished by United Nations Children's Fund (UNICEF), a per an agreement described below under non RCRC actors)

The NS DM is giving daily updates on the situation and planned actions to the Red Cross Red Crescent Movement partners.

Overview of Red Cross Red Crescent Movement in country

ICRC is present in-country, however in this operation they are not involved in the response.

Spanish Red Cross (SRC) and American Red Cross (ARC) are based in Tanzania. TRCS is keeping them updated on the situation and they participate in the technical meetings at the National society, contributing with technical input.

IFRC is not present in-country, however close coordination is maintained between the NS and the IFRC regional representation office in Nairobi. The regional and Zone office has been providing technical support to the National society in planning the DREF operation, and will closely monitor and assist the implementation. The IFRC regional office provided financial support that enabled the rapid situation and needs assessment that was undertaken.

Overview of non-RCRC actors in country

The Government, through the Prime Minister's Office-Disaster Management Department (PMO-DMD), and the Morogoro Regional and local authorities, have been coordinating the search and rescue operation and relief mobilization. The Tanzania Police Force has deployed its helicopter for monitoring the search and rescue operation.

On Thursday 23rd January 2014, the Prime Minister visited the affected areas and promised that the central government would deliver food assistance to the affected. He also ascertained the deployment of the military to assist in the re-construction of the damaged road infrastructure/bridges.

The central government through the Prime Minister's Office and the Morogoro regional authority has approached TRCS for emergency shelter items/tents and technical support for the construction of emergency shelter.

The government has contracted a Chinese Construction Company for rehabilitating the damaged bridges. Tanesco (the national electricity supply company) is rehabilitating dislodged electric transmission/power lines.

TRCS has a standby project agreement with UNICEF to support the NS with disaster preparedness through enabling stocks in the sectors of water, sanitation and hygiene (WASH), and Nutrition and Health. In the event of a disaster the NS can use the stock which is later replenished by UNICEF.

The PMO-DMD has donated relief items (Soap – 100 cartons, Tents - 26, Blankets – Large 300 and small 500, Kitchen sets – 300 sets, Mats – 1,450), for distribution to affected families.

The government of Tanzania through the President and the Prime Minister have ascertained to assist all the affected with food relief items and some NFIs. Discussions are ongoing on how to address the water and sanitation situation.

The government has specifically asked TRCS to provide emergency shelter for the displaced. TRCS and the government is in dialogue on how to best address the needs and gaps.

Needs analysis, beneficiary selection, risk assessment and scenario planning

22nd January 2014, TRCS dispatched a team of three NDRT Members to carry out a rapid needs and damage assessment of the prevailing situation. Initial situation reports shared by TRCS team indicate that the worst affected district is Kilosa, where the displacement took place, followed by Mvomero.

By 24th January 2014, the TRCS rapid assessment team had gathered data from two heavily affected Wards, namely Magore and Msowelo in Kilosa District. The assessment indicates that the total number of people displaced by the floods is over 10,000 (approximately 2,000 families).

Table 1 below summarizes the affected households and damaged house structures in the affected villages/hamlets.

Table 1: Villages/hamlets affected and house structures destroyed by floods in Magore and Msowelo Wards

Ward: Magole ,Kilosa District	Hamlets	Households Affected	Structures Destroyed
	1. Magole	1446	360
Villages:	2. Mabana- Usukumani	5	3
1. Magole	3. Mbigili - Mateteni	821	101
2. Mabana	4. Mbigili misufini	17	0
3. Mbigili	5. Mbigili mbuyuni	235	13
	6. Mbigili Tuatugawe	16	0
	Total	2,540	477
Ward: Msowelo, Kilosa District			
Villages:			
1. Msowelo		64	27
2. Makwambe		12	3
	Total	76	30

Source: TRCS Initial Assessment Report, 24th Jan 2014

The flash floods caused mass displacements and the majority of the displaced population live on safer/higher open grounds along the road, making emergency shelter a critical need. Many of the displaced households are still not hosted or accommodated in any shelter. Additionally, many of the houses were damaged by mud which also destroyed their belongings. Therefore some of the worst affected households will need not only emergency shelter but also some basic household items such as mattresses, blankets, mosquito nets, water storage containers (buckets/jerry cans), cooking utensils, food items and hygiene related items.

The initial assessment indicates that most of the affected villages have their boreholes contaminated with flood/muddy water and the toilets are no longer used. In regards to water supply, the assessment team found that when the electrical poles in Magore were dislodged due to the floods, as a consequence the power blackout in the area subsequently affected the water supply, when the pumped system could not

send the water to the raised tank, which normally then distributes water to end users by gravity flow. Additionally, toilets have been submerged, further contaminating the affected areas. At the moment no actor has committed to address the issue of sanitation, including construction of latrines. The government is working to ensure this is addressed.

Hygiene promotion and distribution of water and hygiene related NFIs is a critical need of the affected population. The displaced population is at high risk of malaria infection, and other communication and water and sanitation related diseases. Therefore, hygiene promotion and distribution of water and hygiene related NFIs is planned to minimize the risk of water and sanitation related diseases.

There are general traumatic conditions resulting from both the loss of family belongings and the shock, calling for immediate psychosocial support services.

The water has now started to recede in some areas however, many houses have been destroyed or flooded by mud and it is foreseen that until clearance of the areas have been done, many vulnerable households will remain in need of emergency assistance for some month to come.

Risk Assessment

Inaccessibility of some areas remains a concern. TRCS intends to continue assessment and potentially revise their intervention if needed, if additional vulnerable households are identified.

Beneficiary selection:

400 of the most vulnerable households will be selected for assistance based on damaged houses, and vulnerability. For special consideration will include the elderly, single parents, female-headed households, pregnant/lactating women and under-five children. The affected communities will be involved in the identification of beneficiaries.

B. Operational strategy and plan

Overall objective

To provide for the immediate needs of 400 most vulnerable displaced families, through the provision of emergency shelter, basic household items, and support access to safe water.

The target population for the emergency operation is 400 households most vulnerable households (around 2000 people) whose houses were damaged and their belongings destroyed or lost.

Proposed strategy

This DREF operation will support TRCS in providing emergency shelter, non-food relief items for 400 displaced and vulnerable households (approximately 2000 people) affected by the flash floods. Also, the interventions will aim at increasing access to safe water for the targeted households.

Quality programming/needs assessment:

TRCS intends to undertake an in depth situation and needs assessment, also including the inaccessible areas to ensure that needs of affected persons are being addressed. The operation might be revised based on the findings.

Health and care:

First aid services and referrals will be provided to the affected population, by already trained and experienced volunteers. Mosquito nets will be provided to 400 targeted vulnerable and displaced families (two per family) who are at high risk of malaria infection, along with demonstration of its proper usage. Psychosocial support will be provided to families who have been affected resulting from the loss of family belongings and the shock of the event. Ten volunteers will be trained in psychosocial support by TRCS staff trained recently in training of trainers (ToT) psychosocial support. Additionally, the DREF will replenish 300 already distributed mosquito nets.

Water, Sanitation and Hygiene Promotion

Under this component of the operation TRCS will carry out hygiene promotion, distribution of water purification tablets, and hygiene related NFIs to minimize the risk of water and sanitation related diseases.

Hygiene/dignity kits will be distributed to 400 households specifically targeting households with women and children. Additionally, the 400 displaced families will be provided with three buckets per family, two jerry cans per family, and four laundry soap bars per family per month as part of the hygiene related NFIs.

TRCS will continuously assess and review the water, sanitation and hygiene situation for the displaced, and work with the government to address issues. Should there be a need the DREF might be revised to address lack of sanitary facilities for the displaced families.

Shelter and Household Items

TRCS intends to assist 400 most vulnerable and displaced families to construct emergency shelter. Tarpaulins (3 per family), construction material, and tools will be provided. Basic household items (kitchen set/one per family, blankets/ two per family, and mattresses/ two per family) will be provided to 400 of the most vulnerable displaced families. Volunteers will be trained in construction of emergency shelter as well as safe and resistant shelter constructions. Awareness campaigns on safety practices and safe shelter will be undertaken with the 400 displaced households.

The DREF will also replenish 300 blankets that have already been distributed to displaced families.

The DREF operation will address cross-cutting themes including gender and diversity mainstreaming to ensure the inclusion of most vulnerable groups like vulnerable women, children, persons with disabilities, the elderly and people living with HIV/AIDS.

Operational support services

Human resources

HR planning table			
Position Title	Sector Area	Time (months)	Specific roles, responsibilities, tasks
Volunteers (30)	Shelter, Relief	3 months	Construction of emergency shelter, distribution of non-food NFIs, hygiene promotion activities
Volunteers (10)	Psychosocial support and health		Provide counselling services to the displaced persons, Distribute mosquito nets, First aid and referral services
Volunteers (10)	Watsan		Conduct Hygiene promotion campaigns.
National Society HQ staff (5)	Health, (2) WatSan, Shelter, Relief	3 months	Monitoring and supervision

IFRC Regional Disaster Management Unit will provide technical support to ensure that the DREF is implemented as per the plan. Close monitoring of the operation will be provided. Finance department will ensure regular reporting is adhered to. Visit by the IFRC finance department is already planned. A Regional Disaster Response Team (RDRT) member will be deployed for 2 months for programme management, technical support and monitoring purposes. The RDRT will have a strong shelter and relief background.

Logistics and supply chain

- Procurement will be done locally through the NS Logistics Unit in line with IFRC procurement procedures.
- Procured relief stock will be stored in the NS central storage facility before being distributed to the targeted communities. Temporary storage based in the target communities will be set up
- Delivery of relief items to the intended locations will done using NS Trucks
- The 300 blankets and mosquito nets will be replenished.

Planning, monitoring, evaluation, & reporting (PMER)

- Monitoring will be done regularly by NS staff
- Lessons-learned workshop will be organized for staff and volunteers involved in the emergency operation

IFRC Disaster management Coordinator will ensure monitoring structures and system will be put in place with regular reporting of both the narrative and financial. The National society will send regular operations update of the activities as per the plan and budget.

Administration and Finance

Tanzania Red Cross is on working advance system. The Financial returns will be reported according to the National societies accounting system.

The Finance office in the regional office will provide technical support to the National society to ensure the activities are reported according to the budget lines. A technical support visit is planned by the IFRC regional finance in order to provide support and advice to the national society, and ensure that all procedures are adhered to.

Communications:

TRCS will work closely with the IFRC to raise awareness of the specific role and added value of Red Cross volunteers in emergency response. This will be done through the collection of human interest stories as well as key messages and photographs. In addition to regularly providing communication updates within the Movement, media will also be engaged to ensure awareness is raised among donors and the general public.

C. DETAILED OPERATIONAL PLAN

Quality programming / needs assessment

Outcome 1: A detailed situation and needs assessment is undertaken in the affected area, including currently inaccessible locations, to inform the design and implementation of the DREF operation															
Output: A detailed needs assessment undertaken															
Activities planned	1	2	3	4	5	6	7	8	9	10	11	12	13	14	15
Week										0	1	2	3	4	5
Undertake in depth needs and situation assessment	X														
The emergency plan of action is updated and revised as necessary to reflect needs	X	X													

Health & care

Needs analysis:

An initial assessment of the disaster by the Tanzania Red Cross Society indicates that the total number of people displaced by the floods is over 10,000 (approximately 2,000 families). The displaced population is at high risk of malaria infection, and other communication and water and sanitation related diseases e.g. diarrhoea hence, the provision of mosquito nets is an urgent need.

There are general traumatic conditions resulting from both the loss of family belongings and the shock, calling for immediate psychosocial support services.

The needs of the displaced families for basic survival are still unmet and there are no chances that the displaced people whose houses have been destroyed or flooded by mud will be able to recover soon. This means that the basic survival and relief assistance will be needed for at least three months.

construction																				
Volunteers conduct awareness creation campaign to raise understating of safety principles in place of origin				X	X	X														
Develop and print materials to promote safe shelter practices both in displacement sites and place of origin			X	X																

Budget

A total budget of CHF 180,676 is requested (see attached).

Contact information

For further information specifically related to this operation please contact:

- **In Tanzania:** Joseph Kimaryo, Disaster Management Director; Tanzania Red Cross National Society; phone: +255 713 325 042; email: utouh2009.yahoo.com
- **IFRC Regional Representation:** Finnjarle Rode, Regional Representative for East Africa; Nairobi; phone: +254 20 283 5000; email: finnjarle.rode@ifrc.org
- **IFRC Zone:** Daniel Bolaños, Disaster Management Coordinator, Africa; phone: +254 (0)731 067 489; email: daniel.bolanos@ifrc.org
- **IFRC Geneva:** Christine South, Operations Quality Assurance Senior Officer; phone: +41.22.730.45 29; email: christine.south@ifrc.org
- **IFRC IFRC Zonal Logistics Unit (ZLU):** Rishi Ramrakha, Nairobi; phone +254 20 283 5142, Fax +254 20 271 2777, email: rishi.ramrakkha@ifrc.org

For Resource Mobilization and Pledges:

- **In IFRC regional representation:** Diana Ongiti, Senior RM Officer; phone +254 20 2835 276; email: diana.ongiti@ifrc.org

For Performance and Accountability (planning, monitoring, evaluation and reporting):

- **IFRC Zone:** Robert Ondrusek, PMER Coordinator, Africa phone: +254 731 067277; email: robert.ondrusek@ifrc.org

How we work

All IFRC assistance seeks to adhere to the Code of Conduct for the International Red Cross and Red Crescent Movement and Non-Governmental Organizations (NGOs) in Disaster Relief and the Humanitarian Charter and Minimum Standards in Disaster Response (Sphere) in delivering assistance to the most vulnerable.

The IFRC's vision is to inspire, encourage, facilitate and promote at all times all forms of humanitarian activities by National Societies, with a view to preventing and alleviating human suffering, and thereby contributing to the maintenance and promotion of human dignity and peace in the world.

www.ifrc.org
Saving lives, changing minds.



The IFRC's work is guided by Strategy 2020 which puts forward three strategic aims:

1. Save lives, protect livelihoods, and strengthen recovery from disaster and crises.
2. Enable healthy and safe living.
3. Promote social inclusion and a culture of non-violence and peace.

DREF OPERATION: TANZANIA FLOODS (MOROGORO/DAKAWA)

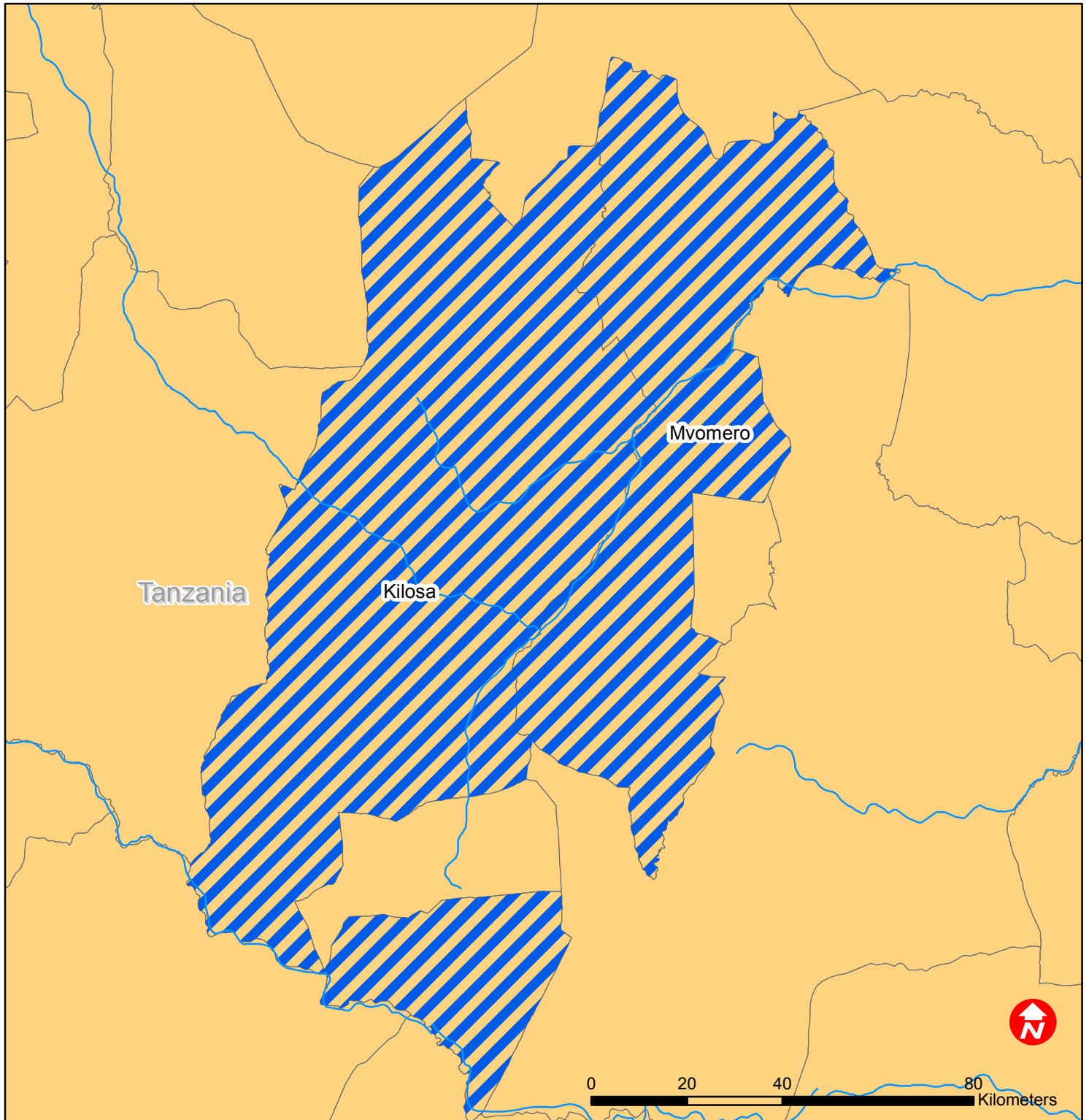
01/02/2014

DREF Grant
Budget CHF

Budget Group	
Shelter - Relief	46,000
Shelter - Transitional	0
Construction - Housing	0
Construction - Facilities	0
Construction - Materials	0
Clothing & Textiles	24,700
Food	0
Seeds & Plants	0
Water, Sanitation & Hygiene	24,180
Medical & First Aid	7,100
Teaching Materials	0
Utensils & Tools	9,200
Other Supplies & Services	0
Cash Disbursements	0
Total RELIEF ITEMS, CONSTRUCTION AND SUPPLIES	111,180
Land & Buildings	0
Vehicles	0
Computer & Telecom Equipment	0
Office/Household Furniture & Equipment	0
Medical Equipment	0
Other Machinery & Equipment	0
Total LAND, VEHICLES AND EQUIPMENT	0
Storage, Warehousing	0
Distribution & Monitoring	0
Transport & Vehicle Costs	4,918
Logistics Services	0
Total LOGISTICS, TRANSPORT AND STORAGE	4,918
International Staff	12,000
National Staff	0
National Society Staff	5,330
Volunteers	10,354
Total PERSONNEL	27,684
Consultants	0
Professional Fees	3,341
Total CONSULTANTS & PROFESSIONAL FEES	3,341
Workshops & Training	2,256
Total WORKSHOP & TRAINING	2,256
Travel	6,000
Information & Public Relations	11,000
Office Costs	2,270
Communications	0
Financial Charges	1,000
Other General Expenses	0
Shared Office and Services Costs	0
Total GENERAL EXPENDITURES	20,270
Partner National Societies	0
Other Partners (NGOs, UN, other)	0
Total TRANSFER TO PARTNERS	0
Programme and Services Support Recovery	11,027
Total INDIRECT COSTS	11,027
TOTAL BUDGET	180,676



Tanzania: Flash Floods



The maps used do not imply the expression of any opinion on the part of the International Federation of Red Cross and Red Crescent Societies or National Societies concerning the legal status of a territory or of its authorities. Map data sources: ESRI, DEVINFO, GRUMP, International Federation - MDRTZ015.mxd - Map produced by DMU/NBO.



 Affected Areas