

# OPERATIONS UPDATE



International Federation of Red Cross and Red Crescent Societies  
Fédération Internationale des Sociétés de la Croix-Rouge et du Croissant-Rouge  
Federación Internacional de Sociedades de la Cruz Roja y de la Media Luna Roja  
الاتحاد الدولي لجمعيات الصليب الأحمر والهلال الأحمر

## CHAD: SUDANESE REFUGEES

20 November 2004

### FOCUS ON REVISED PLAN OF ACTION

*The Federation's mission is to improve the lives of vulnerable people by mobilizing the power of humanity. It is the world's largest humanitarian organization and its millions of volunteers are active in over 181 countries.*

### In Brief

**Appeal No. 23/2003; Operations Update no. 9; Period covered: 21 October – 10 November 2004; Appeal coverage: 79.6%;** [Click here to go directly to the attached Annex 1: Contributions List, also available on the website.](#)

#### Appeal history:

- Emergency Appeal 23/2003 launched on 2 Dec 2003 for CHF 2,303,000 (USD 1,779,508 or EUR 1,448,063) for six months to assist 65,000 beneficiaries. [http://www.ifrc.org/cgi/pdf\\_appeals.pl?03/2303.pdf](http://www.ifrc.org/cgi/pdf_appeals.pl?03/2303.pdf)
- Operations Update no. 2 dated 4 May 2004 extended the operating timeframe until 31 Dec 2004. [http://www.ifrc.org/cgi/pdf\\_appeals.pl?03/230302.pdf](http://www.ifrc.org/cgi/pdf_appeals.pl?03/230302.pdf)
- Operations Update no. 3 dated 25 June 2004 revised the Appeal budget to CHF 3,968,000 and confirmed the extension of the appeal timeframe until 31 Dec 2004. [http://www.ifrc.org/cgi/pdf\\_appeals.pl?03/230303.pdf](http://www.ifrc.org/cgi/pdf_appeals.pl?03/230303.pdf)
- Revised Appeal 23/2003 dated 27 July 2004 revised the Appeal budget to CHF 14,215,000 (USD 11,241,600 or EUR 9,297,000), increased the number of beneficiaries to 80,000 and confirmed the timeframe until 31 Dec 2004. [http://www.ifrc.org/cgi/pdf\\_appeals.pl?03/2303r.pdf](http://www.ifrc.org/cgi/pdf_appeals.pl?03/2303r.pdf)
- This Operations Update (no. 9) amends the number of beneficiaries to 60,000 and extends the timeframe until the end of February 2005. (See “Operational Developments” below).
- Disaster Relief Emergency Funds (DREF) allocated: CHF 160,000

**Outstanding needs: CHF 2,901,293 (USD 2,304,400 or EUR 1,868,800)**

#### Related Emergency or Annual Appeals:

- Chad 2004 Annual Appeal no. 01.42/2004 [http://www.ifrc.org/cgi/pdf\\_appeals.pl?annual04/014204.pdf](http://www.ifrc.org/cgi/pdf_appeals.pl?annual04/014204.pdf)
- Sudan 2004 Annual Appeal no. 01.06/2004 [http://www.ifrc.org/cgi/pdf\\_appeals.pl?annual04/010604.pdf](http://www.ifrc.org/cgi/pdf_appeals.pl?annual04/010604.pdf)
- Central Africa sub-regional programmes 2005 Annual Appeal no. 05AA025 (note that Chad is one of four countries incorporated within the Appeal) [http://www.ifrc.org/cgi/pdf\\_appeals.pl?annual05/05AA025.pdf](http://www.ifrc.org/cgi/pdf_appeals.pl?annual05/05AA025.pdf)
- Sudan 2005 Annual Appeal no. 05AA003 [http://www.ifrc.org/cgi/pdf\\_appeals.pl?annual05/05AA003.pdf](http://www.ifrc.org/cgi/pdf_appeals.pl?annual05/05AA003.pdf)

**Operational Summary:**

Anticipated influx of another 100,000 Sudanese refugees and rapid exhaustion of local resources in the arid eastern region of Chad have lead UNHCR and its partner agencies to review and scale up their plan of interventions for the coming months.

As envisaged in the Revised Appeal 23/2003 launched in July 2004, the Federation and the Red Cross of Chad<sup>1</sup> have been working in collaboration with partner organizations on a contingency plan for additional refugees. This expanded plan of action, as outlined in this operations update, will address the needs of up to 60,000 refugees over the next three months, taking into account of the needs of the local population and integrating ongoing relief activities into the developmental programmes of the national society.

This provisional extension of two months is based on the partnership meeting held 18 November in Geneva. An assessment team will be deployed in December and will develop detailed options; the next Operations Update will detail the team's recommendations. An extended timeframe until end-December 2005 is probable, including consideration of a revised budget if necessary.



The situation in eastern Chad remains precarious.

**For further information specifically related to this operation please contact:**

- In Chad: Andreas Doumo Gopina, Secretary General, Red Cross of Chad, N'Djamena; Email [crfchad@internet.td](mailto:crfchad@internet.td); Phone 235.523 434
- In Chad: Eelko Brouwer, Federation Head of Delegation, N'Djamena; Email [ifrcd03@ifrc.org](mailto:ifrcd03@ifrc.org); Phone 235.522 339; Fax 235.522 399; Mobile: 235.360 822
- In Cameroon: Daniel Sayi, Federation Acting Head of Central Africa Sub-Regional Office, Yaoundé; Email [ifrcm06@ifrc.org](mailto:ifrcm06@ifrc.org); Phone 237.221 74 37; Fax 237.221 74 39
- In Geneva: Christophe GrosPierre, Federation Regional Officer for Chad Operations, Africa Dept.; Email [christophe.gros pierre@ifrc.org](mailto:christophe.gros pierre@ifrc.org); Phone 41.22.730 43 13; Fax 41.22.73 03 95

All International Federation assistance seeks to adhere to the Code of Conduct and is committed to the Humanitarian Charter and Minimum Standards in Disaster Response in delivering assistance to the most vulnerable. For support to or for further information concerning Federation programmes or operations in this or other countries, or for a full description of the national society profile, please access the Federation's website at <http://www.ifrc.org>

**Operational developments**

Since early 2003, the Darfur conflict in Sudan - the world's worst humanitarian crisis today described by the UN - has displaced 1.45 million people and forced more than 200,000 to flee across the border into eastern Chad. UNHCR warns that continuing violence along with inadequate humanitarian access within Darfur will force another 100,000 Sudanese to escape to Chad within the next few months. The timeline for repatriation therefore remains uncertain.

Most of the 200,000 refugees are receiving protection and humanitarian assistance in 11 camps in the remote eastern part of Chad, overseen by the UNHCR and its partner agencies. The presence of large refugee populations has placed a huge strain on available supplies of food, water and environment. Some of the refugee camps, especially in the northeast, are going to run out of water very soon, leaving tens of thousands of refugees in an extremely precarious position. UNHCR is stepping up its efforts in search for camp sites with enough water supplies, not only to replace current camps but also as part of contingency planning to receive up to 100,000 new arrivals in the coming months.

The living standards of the Chadians in the area have been evidently affected. A joint assessment conducted between 23 October and 4 November by UN agencies, the Chadian government and the European Union suggests significant improvement in the nutritional situation of the Sudanese refugees but the local population is increasingly malnourished. Immediate action is required to help the local population, as tensions between the locals and the refugees may ignite.

Since the launch of an initial appeal in December 2003, the Red Cross of Chad and the Federation have been responding to the refugee crisis, relocating refugees from the border to camps and transporting relief supplies from the UN agencies. The operation was scaled up in July 2004 through a revised appeal with a focus to establish and manage a refugee camp in Tréguine. With substantial financial and material support from the Red Cross and Red Crescent

<sup>1</sup> Red Cross of Chad - <http://www.ifrc.org/where/country/check.asp?countryid=45>

Movement, the Tréguine camp opened on 27 September 2004 and is now home to more than 12,500 refugees, each with access to safe and adequate water, sanitation facility, health care, food and other relief items. UNHCR regards the camp as a model for future site planning and has requested the Red Cross to take over the management of neighbouring Bredjing camp. This camp is the most congested among 11 camps, housing close to 40,000 refugees which is double its planned capacity. A tripartite framework agreement is being discussed between the Red Cross of Chad, the Federation and the UNHCR. At the same time, the refugee agency is searching for a new camp site in the same area for 10,000 refugees.

The Federation and the Red Cross of Chad have been monitoring the situation and working to expand the refugee operations in eastern Chad taking into consideration the priority needs and the capacities of the national society. The revised plan of action, confirmed by a recent visit to the field by the senior officials from the Red Cross of Chad and the Federation, will focus on:

- Assistance to 40,000 refugees up to August 2005 with contingency planning for an additional 20,000 in the form of shelter, food and non-food, health care, water and sanitation;
- Assistance to the local population, through mitigating the depletion of natural resources in the short term and the impact of population movement on the environment in the longer term;
- Strengthening the national society in volunteer, finance and disaster management; and incorporating these activities with the development plan of the national society and interests of other Red Cross partners;
- Close cooperation and coordination with UN and other partner agencies to ensure effective humanitarian assistance and protection of human dignity in the refugee camps.

## **Red Cross and Red Crescent action - objectives, progress, impact**

**Goal: The essential needs of 60,000 Sudanese refugees in three refugee camps and 9,000 local habitants in eastern Chad are met up to August 2005.**

**Objective 1 (Camp Management): 40,000 Sudanese refugees in two refugee camps receive appropriate humanitarian assistance in the form of shelter, protection, food and non-food items; with a contingency established for an additional 20,000 refugees in a new camp.**

### **Progress/Achievements:**

Since the opening of the Tréguine camp on 27 September 2004, over 12,500 refugees (2,900 families) have been transferred from Bredjing and installed in 2,290 tents. The refugees are settled in the camp according to their ethnic and origin affinities, gradually restoring their basic livelihood. Transfers will go on until the camp reaches its maximum capacity. Warehousing facilities for food and non-food items, distribution sites and distribution teams are in place. A minimum of 2100kcal of WFP food is provided per person per month. Non-food distribution has also started and each family is to receive mosquito nets, blankets, buckets, soap, kitchen sets and sleeping mats. To ensure access of the refugees to food and non-food assistance at household level, the Red Cross has adopted scooping method at distributions instead of regrouping as in other refugee camps. On the other hand, refugees are assuming increasing responsibilities in the day-to-day camp activities as refugee committees with equal male-female representation are being set up. Security measures have been adequate and no significant incident reported so far.

In the coming months, the Red Cross will continue to ensure quality facilities and services at Tréguine camp while assuming the management responsibility of Bredjing camp by the end of the year. With services and facilities alike in the two camps, movement of refugees can be minimized. Activities in the two camps will be implemented in close collaboration with partner agencies.

### **Activities for November 2004 – August 2005:**

- To reallocate and settle refugees to Tréguine camp up to its maximum capacity;
- To relocate refugees in Bredjing by February 2005 using decongestion of the camp and settling the refugees according their ethnic and origin affinities as applied in Tréguine;
- To manage two camps for a total of 40,000 refugees and establish a contingency for another 20,000;
- To renew/upgrade shelter (16,000 tents and 16,000 tarpaulins) for about 8,000 selected families and other non-food items (jerry cans and fuel-saving cookers);

- To launch wood-gathering project for both refugee and local population, and identify alternatives for decreasing pressure on the natural resources;
- To establish good monitoring systems and procedures covering all sectors.

**Objective 2 (Buffer Stock): Constant flow of food distributions to targeted vulnerable groups is ensured through pre-positioning of a three-month food supply.**

**Progress/Achievements:**

Even though the WFP food pipelines have so far been regular and sufficient for the refugee operations in eastern Chad, there is a need to ensure a constant flow of food in the event of a disruption or delay of WFP food pipeline. A buffer stock can be used during emergencies as supplementary food for children, pregnant and lactating mother; for refugees from Central African Republic in southern Chad where donor interest has shifted away; and for the local population whose food security is threatened due to loss of agricultural land and crops. About 4.5 tonnes of BP5 (high-protein biscuits) are already in the pipeline.

**Activities for November 2004 – August 2005:**

- Purchase and store a three-month supply of emergency food in N'djamena, consisting of two-month WFP food rations for 40,000 refugees and one-month food rations for another 40,000 beneficiaries;
- Preposition the food supply closer to identified areas before the rainy season to facilitate the anticipated logistical slowdown during that period and facilitate a continuation of the distributions.
- Purchase adequate containers to increase storage capacity as well as to provide workshop space in Tréguine.

**Objective 3 (Health Care): Preventive and curative health services are provided to the refugees in the camps.**

**Progress/Achievements:**

Through the deployment of a basic health ERU in Tréguine camp, health services have been established for a population of 20,000 refugees, benefiting at the same time the local population. The Red Cross medical team is providing medical screening at registration for every new arrival, and treatment for about 140 patients every day at the medical centre. Basic medical supplies are adequate for the time being and purchase for additional medicines are underway. MSF is providing medical supplies and technical support to the health centre including referral services and training opportunities as needed. The main challenge is to recruit enough Chadian medical staff from the area. A polio vaccination was launched for under-fives in October and other vaccination campaigns are being discussed. MSF has started recently a supplementary feeding programme at the medical centre for children under fives.

In Bredjing, the health services are under the responsibility of MSF - Holland and it is not foreseen that with the take-over of the camp management the Red Cross will become responsible for health services in Bredjing. The Red Cross health activities will therefore continue in Tréguine and support the local population. In cooperation with the Spanish Red Cross and German Red Cross, the capacity of the Red Cross of Chad will be further strengthened in the areas of community health and emergency health.

**Activities for November 2004 – August 2005:**

- To recruit and train local staff for the handover of the ERU and continuity of the health programme with technical support from a German Red Cross health delegate seconded to the Federation;
- To hand over ERU responsibility to the Federation and subsequently to the Red Cross of Chad;
- To make an inventory on the available equipment and medical supplies in view of the increased target population and in agreement with the protocols of the ministry of health (MoH) by December 2004;
- To establish and adapt procedures according to the guidelines of the ministry of health by December 2004;
- To explore and implement creative means of disseminating health messages including HIV/AIDS to the camp and local population;

- To provide infrastructure of a nutritional centre and logistics support for Action Against Hunger (AAH)<sup>2</sup> in the camps to conduct basic nutritional monitoring and provide food basket for the refugee population, as well as in collaboration with the Federation health coordinator to train Red Cross of Chad staff and volunteers;
- To identify needs and establish vaccination programs in cooperation with all medical stakeholders;
- To establish and consolidate a contingency plan for cholera by May 2005.

**Objective 4 (Water and Sanitation): Adequate, gender sensitive and culturally acceptable sanitation facilities are provided to the refugees in the camps and the local population.**

**Progress/Achievements:**

To date, 630 latrines have been constructed and in use in Tréguine, meeting the UNHCR standard of one latrine for every 20 persons. A hygiene awareness team has been established and continues promoting key sanitation messages to the refugee population including the use and maintenance of latrines. The promotion activities are reinforced on Hepatitis E awareness given recent suspected cases in the camp. Community members have been identified and equipped to maintain the latrines in individual blocs. A livestock area has also been enclosed. On the other hand, vector control and waste disposal are being discussed with the refugee communities and parties concerned. Oxfam has ensured a water supply of 14 litres per person per day, consistent with Sphere standards. Pumping hours, storage and distribution system will increase as more refugees arrive in the camp.

The adjusted plan aims to support the refugee population of two camps and the population in surrounding villages in the areas of sanitation (latrine building and maintenance, bathing facilities, solid waste disposal, drainage activities, cattle and slaughter management, and hygiene promotion). The Red Cross of Chad staff will also be trained to take over the maintenance of water facilities from Oxfam in Tréguine.

**Activities for November 2004 – August 2005:**

- To complete the first phase of emergency latrines for 20 persons per latrine for 40,000 refugees by January 2005;
- To locally recruit a water and sanitation project coordinator and additional technical professionals;
- To reinforce the transport capacity for the project with a permanent lorry and an additional pickup in place.
- To construct, in cooperation with the refugees, modified latrines which are gender sensitive, technically appropriate and culturally acceptable;
- To assist 40,000 refugees to establish bathing facilities by March 2005;
- To conduct hygiene promotion in the camps and in the surrounding villages;
- To assist the local population in the construction of latrines and bathing facilities;
- To facilitate the establishment of a livestock management taking into account water management, grazing land management and other aspects;
- To implement an appropriate vector control programme in the refugee camps;
- To establish in the camps a solid waste program as required;
- To assess the drainage systems in the camps and ensure a proper drainage during the rainy season;
- To take over gradually the water system in Tréguine from Oxfam from February 2005 and ensure a proper operation and maintenance of the system;
- To implement above activities in cooperation with the Red Cross of Chad and provide training to their staff as required.

**Objective 5 (Community Services): Specific vulnerable groups in the refugee camps receive appropriate assistance and protection.**

**Progress/Achievements:**

Most of the camp residents in Tréguine are women and children. Identification of vulnerable groups such as elderly, disabled, unaccompanied minors, child- and women-headed families, along with assessment of their specific needs, is ongoing. Some teachers have been identified and schools will soon be put up and appropriately equipped. ICRC has also set up a tent in the camp and will soon initiate tracing and family reunification services. Some recreational activities have started for youths and children in the camp.

<sup>2</sup> Cooperation with AAH is based on their assignment by UNHCR to monitor and advise on nutritional issues in all camps.

Learning from the experience in the refugee camps in southern Chad, the plan is to develop social welfare programmes with focus on protection of women and children, within the framework agreement with the UNHCR in the context of camp management. Activities outside the camp perimeter will be taken into consideration such as wood-gathering. In addition, the Red Cross will facilitate the establishment of a negotiation structure between the camp population and the local communities.

**Activities for November 2004 – August 2005:**

- To conduct exposure visit in established refugee camps in the south to identify possible activities;
- To support the Red Cross of Chad to initiate, coordinate and manage community services, with focus on assisting and protecting elderly, disabled, unaccompanied children and women; To include them in foster care psycho-social support in Treguine and Bredjing as required and in close cooperation with identified partners.
- To liaise with other partners such as UNHCR, ICRC on protection issues and to develop a comprehensive protection package, taking the specific demographic profile of the camps into account.
- To train Red Cross of Chad staff on social work and protection issues;
- To organize a training of trainers on protection issues in coordination with UNHCR and ICRC by May 2005.
- To cooperate with UNICEF on education and recreation programmes;
- To develop in close cooperation with the camp manager and all stakeholders programmes to enhance the physical security, e.g. relating to military activities, forced recruitment, women's security both inside and outside the camp;
- To promote activities against sexual and gender-based violence targeting both the refugee population and the volunteers/staff;
- To promote access to assistance for all.

**Objective 6 (Construction): A minimum of half the tented facilities are replaced with semi-permanent structures before the next rainy season and to support the programmes through the construction of facilities and improvements in the Hadjer Hadid quarters of the Federation and the Red Cross of Chad.**

**Progress/Achievements:**

In the emergency phase, tents were put in place as temporary shelters; however, the tented structure will soon be destroyed by the harsh environment in eastern Chad, especially during the rainy season. There is a need to replace half of them with semi-permanent structures to improve the security, durability and comfort level of these facilities. Relief and community services can be better implemented with semi-permanent distribution centres and meeting areas for social and religious activities. The tents can be stored as contingency for other possible scenarios.

**Activities for November 2004 – August 2005:**

- To make an inventory of available local building materials and establish a plan of action;
- To build facilities for the refugee population such as schools, community centres and mosques as required;
- To upgrade the living compounds of the Federation and Red Cross of Chad in Hadjer Hadid by January 2005.
- To replace at least half of the tented facilities with semi-permanent structures by May 2005.

**Objective 7 (Support to the Local Population): The local population along the border areas and around the Red Cross refugee camps receive support to mitigate the impact of the population influx and adequate support in health, sanitation and community services.**

**Progress/Achievements:**

There are currently about 9,000 habitants in the six villages around the Red Cross refugee camp at Tréguine. The needs of the population have always been substantial, but their situation has been exacerbated by this recent massive influx of refugees. Nearly 40 percent of local children suffer from chronic malnutrition, compared with the normal malnutrition prevalence rate of 17 percent. Besides ongoing medical care to the local population at the Tréguine medical centre, the revised plan of action will provide opportunity to develop programmes in health, sanitation and food security that in the short term will ameliorate their serious health and nutrition problems. Lessons learned will be used for the development of small-scale community projects in other technical areas and

evaluate these for their applicability in the context of the longer-term developmental programmes of the Red Cross of Chad.

**Activities for November 2004 – August 2005:**

- To support the Red Cross of Chad to assess the overall needs of the most vulnerable in the border area and identify possible areas of intervention;
- To support the population in the border area with food and non-food items according to the assessment result;
- To support the Red Cross of Chad in establishing a monitoring system to follow closely the impact;
- Together with the PNS, identify projects using BPI<sup>3</sup> for the local population such as in improving their sanitation facilities and livelihood;
- To initiate and facilitate the local communities to form a committee to launch health prevention activities;
- To allocate funds for identified projects out of reservations made for this purpose;
- To evaluate the intervention and use lesson learned for developing further community projects.

**Objective 8 (Capacity Building): The capacity of the Red Cross of Chad in relief operations is strengthened at camp, community and headquarters level.**

**Progress/Achievements:**

Since 2002, the Red Cross of Chad has been running a programme in the south for Central African Republic refugees (currently at around 20,000) in partnership with the UNHCR. The society has also extensive and successful experience in responding to floods and epidemics in the country. It is one of the main indigenous disaster response organizations in Chad and has a strong reputation among donors. However the society has poor infrastructure with only a few paid, professional staff and a limited volunteer base. The refugee crisis in the east is stretching further the society's resources and substantial external assistance will continue to be needed. Currently, about 150 volunteers are deployed in the refugee operations in the east but systems and trainings are yet to be in place to ensure effective implementation of the operation. Some key positions in the Red Cross of Chad headquarters have been reinforced. However, except health counterpart in N'Djamena and a camp manager with refugee operation experience in the south identified for Tréguine, permanent counterparts for other sectors of the operation need to be reinforced.

The refugee operation will provide opportunities to build the capacity of the national society including training of key national society personnel and volunteers in technical fields as well as reinforcing its organization development in cooperation with other PNS<sup>4</sup>. Included in the plan is to support the national society in establishing an effective and modern infrastructure including office space, equipment, vehicles and training facilities at field and headquarters level. Counterparts from the national society for various aspects of the operation will also be identified and trained on the job to gradually take over the full responsibilities of the operation. The Red Cross of Chad, the ICRC, in-country PNS and the Federation are committed to this effort, and encourage donors to recognize and support these needs.

**Activities for November 2004 – August 2005:**

- To establish a training centre, equipped with necessary hardware and software infrastructure in Abéché, in collaboration with the Spanish Red Cross and French Red Cross;
- To organize in close cooperation with the Red Cross of Chad a rotating system to facilitate the further development of its volunteers through the combination of courses and on-the-job training on all aspects of disaster management and the tools developed by the Federation to address population movement such as BPI, SPHERE, and REACHOUT;
- To select and train volunteers with prior relief experience on various aspects of relief operation in trainings for trainers and use them as catalyst to expand the training activities for other volunteers;
- To establish a permanent Red Cross of Chad office building in Abéché, to replace the rented facilities at a later stage. The Spanish Red Cross and British Red Cross are already funding the construction of the Red Cross of Chad headquarters in N'Djamena for which a building committee has already been formed;
- To appoint permanent counterparts from the Red Cross of Chad for key delegate functions;

<sup>3</sup> BPI – Better Programming Initiative is a Federation impact assessment tool based on the Local Capacities for Peace Project (LCPP).

<sup>4</sup> PNS – partner national Red Cross/Red Crescent societies

- To hand over the operation to Red Cross of Chad over the next two years, aiming to reduce Federation coordination support from the camp to Abéché level in the first year, and to N'Djamena level in the second year;
- To support the finance development of the national society for three months, followed by organizational development;
- To conduct a VCA<sup>5</sup> of the refugee population and local population in November 2004 with the support of the regional disaster management coordinator;
- To use the experiences in the ongoing operations to identify strengths and weaknesses in support of the development of a disaster-preparedness curriculum for the national society.

**Objective 9 (Transport Support Package, TSP): Effective transport capacity is put in place to support the food and non-food supply line for refugees in cooperation with the UNHCR up to the end of 2004, and, a strategy developed and agreed with all parties to develop a regional fleet base, strategically positioned in 2005.**

**Progress/Achievements:**

The Red Cross of Chad and the Federation have been assisting the UNHCR in relocating refugees, transporting and distributing WFP food and non-food items (for UNHCR and other agencies) and potable water (80,000 litres of water per day) to the refugees through a transport support package donated by the Norwegian Red Cross. The Red Cross vehicles with all-terrain and all-weather capacity have contributed substantially to the relocation of 200,000 refugees to sheltered and protected camps and ensured continuation of relief pipeline during the rainy season. Some 140 volunteers of the Red Cross of Chad have been supporting the operation of the TSP and a workshop has been established in Iriba where 23 of the 29 M6 trucks are usually based.

The current transport agreement with the UNHCR will come to an end on 31 December 2004. The Federation is seeking to retain some of the trucks in Adré area for the Red Cross refugee operations and develop a strategy and infrastructure for establishing a fleet base in N'Djamena with trained national society staff to respond to disasters in the region. The Red Cross of Chad will also assume management of the vehicle workshop once the Federation fleet manager departs.

**Activities for November 2004 – August 2005:**

- To continue to support Red Cross of Chad with all weather transport capacity to deliver food and non-food items to beneficiaries in eastern Chad in partnership with the UN agencies until December 2004;
- To reach an agreement with the UNHCR in reallocating the trucks to the area of Adre to support the Red Cross of Chad, Federation and other partners in Refugee operations in that area and to secure Red Cross supply lines beyond 2004;
- To agree with Red Cross of Chad on an exit strategy for the deployment of the TSP trucks is being prepared which includes establishing a fleet based in N'Djamena, with continuous technical support from the Norwegian Red Cross, for regional support in times of disasters;
- To construct a garage and parking space to facilitate the establishment of a regional response fleet.
- To seek local resource for spare parts.
- To support the Red Cross of Chad in long term with the purchase of two 10-ton trucks for their ongoing activities outside emergencies.

**Objective 10 (Telecommunications):**

There has been no progress report issued for this objective during this reporting period.

---

<sup>5</sup> VCA – Vulnerability and Capacity Assessment is a basic process used to identify the strengths and weaknesses of national societies in relation to disaster management.

## **Federation Coordination**

Since the refugee crisis exacerbated, the Federation has expanded its presence in Chad in support of the refugee operation. The in-country structure at N'Djamena, Abéché and Hadjer Hadid, has been reinforced with delegates in the areas of finance and administration, field coordination, camp management, relief and logistics, construction, health, water and sanitation, information and reporting.

To effectively achieve the expanded appeal objectives, the Federation will continue to deploy within the expanded appeal timeframe:

- two camp managers;
- one water/sanitation delegate specialized in sanitation facilities, and another in hygiene awareness;
- one social welfare delegate;
- one health delegate to facilitate the handover of the basic health ERU to the Federation and subsequently to the national society;
- two delegates to handle relief, logistics and construction, one additional relief delegate as needed and advised by the camp managers;
- one programme coordinator to coordinate small-scale community initiatives for and with the local population, in close collaboration with the national society counterpart and other technical delegates; and,
- one finance development delegate at headquarters level to facilitate restructuring and training of national society financial staff.

The Federation has established good working relationships and cooperation with the Red Cross of Chad, UNHCR and partner organizations. Efforts will continue to maintain close coordination both at camp and sub-delegation levels with these agencies, local authorities, refugee and local communities to ensure effective and quality humanitarian assistance to the refugees.

The Federation will also continue to participate in the weekly Movement coordination meeting in N'Djamena with the national society, the ICRC, French Red Cross and Spanish Red Cross. There are ongoing discussions to standardize salary scale and benefits for locally hired staff and volunteers. In line with the national society's development plan and in support of the annual appeal, the Federation will act as a coordinating body to pull resources and expertise from the Movement to strengthen their volunteer mobilization, disaster management, health care and community development programmes.

### **Communications – advocacy and public information**

There has been no progress report issued for this sector during this reporting period.

### **Monitoring and evaluation**

The programme will be monitored by the Federation Africa Department. Evaluation and revision of the programme will be taken in conjunction with the launch of a longer-term appeal. Weekly camp indicators are shared with the UNHCR to ensure fulfilment of camp management standards.

### **Annexes**

- Annex 1: Contributions List
- Annex 2: Table 1 – Composition of Refugees, and Table 2 – Weekly indicators
- Annex 3: UNHCR Map – Refugee Camps, Eastern Chad (06.10.04)

[Contributions list below; click here to return to the title page.](#)

# Chad - population movements

ANNEX 1

APPEAL No.23/2003

## PLEDGES RECEIVED

30/11/2004

DONOR	CATEGORY	QUANTITY	UNIT	VALUE CHF	DATE	COMMENT
-------	----------	----------	------	-----------	------	---------

### CASH

REQUESTED IN APPEAL CHF ----->				14,215,000	TOTAL COVERAGE 79.6%	
AMERICAN - GOVT/PRM		400,000	USD	506,600	27.02.04	
AMERICAN - GOVT/PRM		2,000,000	USD	2,529,000	22.09.04	
AMERICAN - RC		100,000	USD	126,450	04.08.04	WATER & SANITATION ACTIVITIES
BRITISH - RC		100,000	GBP	228,600	17.08.04	
BRITISH - RC		2,661	GBP	6,083	11.08.04	PROGRAMME SUPPORT
BRITISH - RC		20,000	GBP	45,720	21.09.04	OFFICE INFRASTRUCTURE
DANISH - RC				57,933	19.12.03	
DANISH - GOVT		3,315	USD	4,192	23.07.04	PROGRAMME SUPPORT
ECHO (02002)		800,000	EUR	1,223,600	27.10.04	TREJINE CAMP
FINNISH - RC		40,000	EUR	61,940	19.12.03	
FINNISH - GOVT		13,960	EUR	21,673	20.10.04	PROGRAMME SUPPORT
FINNISH - GOVT		150,826	EUR	234,157	20.10.04	
FINNISH - RC		137,170	EUR	212,956	26.10.04	
ICELANDIC - RC		2,000,000	ISK	34,800	25.06.04	
ICELANDIC - GOVT		1,000,000	ISK	17,400	18.11.04	
IRISH - RC		25,000	EUR	38,988	04.04.04	
JAPANESE - RC		58,700	USD	76,222	12.12.03	
JAPANESE - RC		30,000,000	JPY	343,200	19.08.04	
LIBYAN - RC				7,000	11.12.03	
LIBYAN - RC				10,000	07.10.04	
MALAYSIA - PRIVATE DONOR				975	03.08.04	
MONACO - RC		2,500	EUR	3,900	31.12.03	
MONACO - RC		10,000	EUR	15,525	12.10.04	
NETHERLANDS - RC		1,065,000	EUR	1,628,385	06.07.04	PURCHASE OF KITCHEN SETS, BLANKETS, TARPULINS, MOSQUITO NETS, MEDICINES, TRANSPORT & DISTRIBUTION COSTS, PERSONNEL, TRAINING
NETHERLANDS - RC		4,527	USD	5,724	23.06.04	PROGRAMME SUPPORT GOODS
NETHERLANDS - RC		2,588	EUR	3,988	23.06.04	
NORWEGIAN - GOVT/RC		1,200,000	NOK	222,000	23.01.04	
NORWEGIAN - GOVT/RC		31,850	NOK	5,892	23.01.04	PROGRAMME SUPPORT, GOODS
NORWEGIAN - GOVT/RC		14,950	NOK	2,766	23.01.04	PROGRAMME SUPPORT, STAFF
PRIVATE DONORS				10,340	08.09.04	
SWEDISH - RC		1,000,000	SEK	172,000	10.12.03	
SWEDISH - RC		100,000	SEK	16,900	01.01.04	IN-COUNTRY COST DELEGATE
SWEDISH - GOVT/RC		1,000,000	SEK	167,500	29.07.04	
SWEDISH - GOVT		2,000,000	SEK	335,000	28.10.04	
SWEDISH - GOVT		291,000	SEK	48,743	02.11.04	CAMP MANAGER TREGUINE
SWISS - GOVT/RC				85,562	02.12.03	
SWISS - RC		4,359	USD	5,510	28.06.04	PROGRAMME SUPPORT
UNHCR		150,000	USD	187,350	22.01.04	TRANSPORT OF 80'000 REFUGEES

# Chad - population movements

ANNEX 1

APPEAL No.23/2003

## PLEDGES RECEIVED

30/11/2004

DONOR	CATEGORY	QUANTITY	UNIT	VALUE CHF	DATE	COMMENT
SUB/TOTAL RECEIVED IN CASH				8,704,574	CHF	61.2%

### KIND AND SERVICES (INCLUDING PERSONNEL)

DONOR	CATEGORY	QUANTITY	UNIT	VALUE CHF	DATE	COMMENT
AUSTRIAN - RC		22,000	EUR	33,638	26.07.04	MASS SANITATION ERU
BELGIAN - RC		12,000	EUR	18,348	09.08.04	ERU LOGISTICS
BRITISH - RC		71,513	GBP	163,478	16.08.04	VEHICLE, TARPULINS JERRY CANS
BRITISH - RC		71,637	GBP	163,763	11.08.04	4160 JERRYCANS, 2000 TARPULINS, 1 TOYOTA, TRANSPORT
DANISH - GOVT/RC				230,000	19.08.04	ERU TELECOMMUNICATIONS
DANISH - GOVT		51,000	USD	64,490	23.07.04	300 FAMILY TENTS
FINNISH - GOVT		331,933	EUR	515,326	20.10.04	135000 l SUNFLOWER OIL, 30130 PCES BLANKETS, 4000 PCS TARPULINS, 50 ROLLS PLASTIC SHEETING, TRANSPORT
FRENCH - RC		4,500	EUR	6,934	22.07.04	ERU MASS SANITATION, LOGISTICS, HEALTH CARE
GERMAN - GOVT/RC		497,000	EUR	759,913	16.08.04	BASIC HEALTH CARE ERU
NETHERLANDS - RC		147,650	USD	186,703	23.06.04	500 FAMILY TENTS, TRANSPORT/ INSURANCE
NORWEGIAN - GOVT/RC		490,000	NOK	90,650	23.01.04	RELIEF GOODS
NORWEGIAN - GOVT/RC				42,000	23.01.04	DELEGATE
SWEDISH - RC				26,400	01.01.04	RELIEF & LOGISTIC DELEGATE, 6 MONTHS
SWEDISH - RC		500,000	SEK	83,750	26.08.04	ERU WATSAN DELEGATES
SWISS - RC		141,566	USD	178,940	28.06.04	505 TENTS, TRANSPORT, INSURANCE
CANADA RC	DELEGATES			44,800		
SUB/TOTAL RECEIVED IN KIND/SERVICES				2,609,133	CHF	18.4%

### ADDITIONAL TO APPEAL BUDGET

DONOR	CATEGORY	QUANTITY	UNIT	VALUE CHF	DATE	COMMENT
SUB/TOTAL RECEIVED				0	CHF	

## ANNEX 2

Table 1: Composition of the refugees at Tréguine camp, as 14 Nov 2004

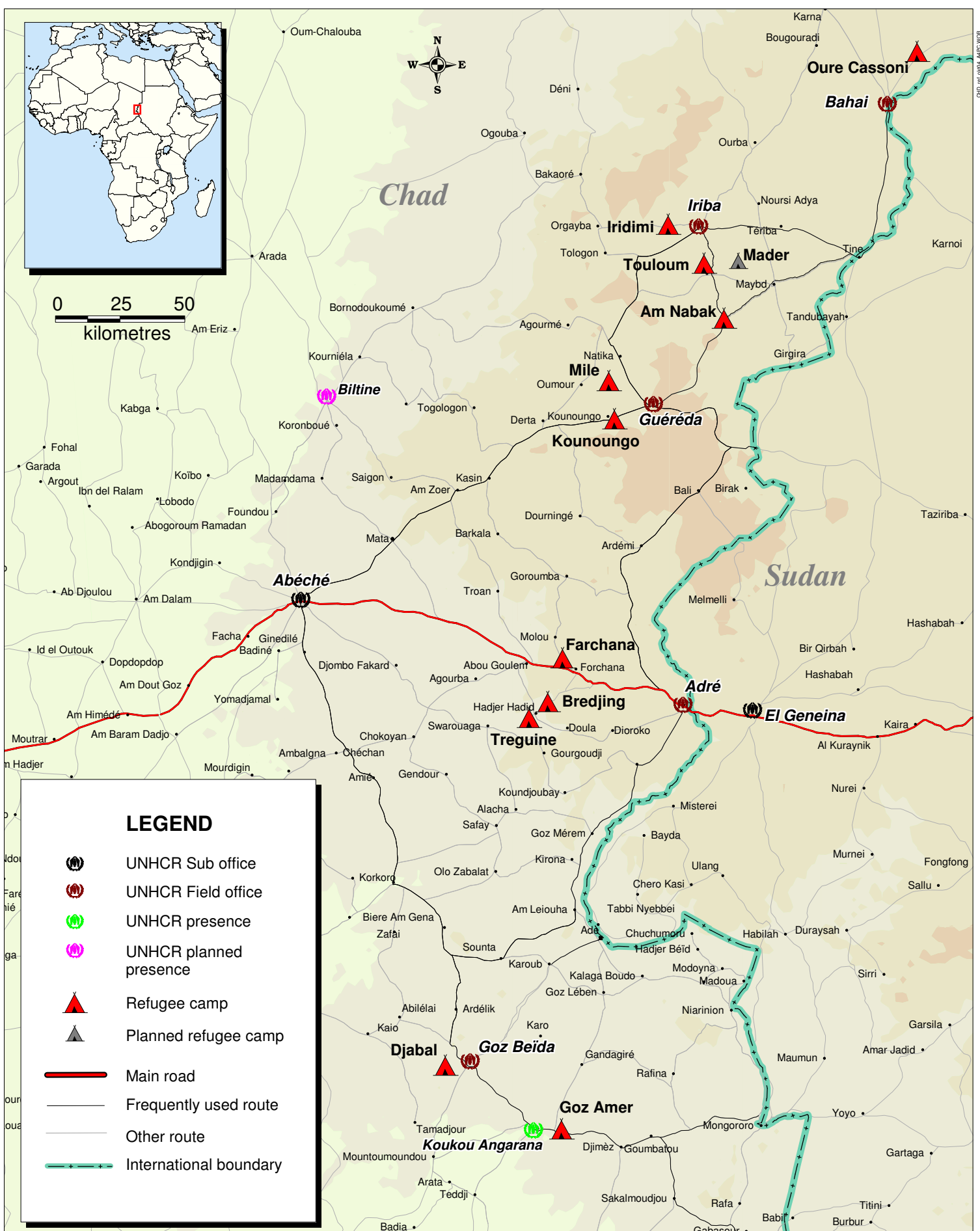
Sex	Age Group				Total
	0-4 yrs	5-17 yrs	18-59 yrs	≥ 60 yrs	
Male	1280	3137	1721	244	6382
Female	1242	2871	3174	259	7546
<b>Total</b>	2522	6008	4895	503	13928
<b>Number of families</b>					3229

Table 2: Tréguine Camp weekly indicators against UNHCR standards

Sector	Indicators	HCR Standards	Tréguine
Provision of Potable Water	Quantity of potable water per person per day	15	14
	# of people per tapstand	120	174
Sanitation	# of users per latrine	20	19.9
	Distance from latrine	<50 meters	<50m meters
	# of refugees per trash can	1 trashcan of 100L/50 persons	N/A
Health	TBM (Crude Mortality Rate) per 10,000 per day	<1	0.001
	TM<5 ans (CMR Under 5) per 10,000 per day	<2	0.001
	# persons per dispensary	10,000	6,278
	# of consultations per agent per day	<50	46
	Vaccination coverage against Measles	<=50/day	N/A
Nutrition	Kcal per person per day	>2100	2,050
	Recovery Rate	>75%	N/A
	Withdrawal (abandon) rate	<15%	N/A
	Death rate	<5%	N/A
Community Services	Ratio of social worker/refugee	1/1500	1/2093
	% of women represented in refugee committees	>50%	50%
Education	Ration of teacher/student	>1/40	N/A
	Number of school materials	>=1 material/3 pupils	N/A
	Number of didactic kits	>=1 kit/school	N/A
	% of pupils 5-17 yrs old that have access to basic education	80% Female; 80% Male	N/A
	Nature of the classrooms	Adequate partition b/n two classrooms	N/A
Site Layout	Living space per person	45m <sup>2</sup>	98m <sup>2</sup>

06.10.2004

Email : [svanberg@unhcr.ch](mailto:svanberg@unhcr.ch)



The boundaries and names shown and the designations used on this map do not imply official endorsement or acceptance by the United Nations.  
Sources: UNHCR, Global Insight digital mapping - © 1998 Europa Technologies Ltd.