

EMERGENCY APPEAL



International Federation of Red Cross and Red Crescent Societies
Fédération Internationale des Sociétés de la Croix-Rouge et du Croissant-Rouge
Federación Internacional de Sociedades de la Cruz Roja y de la Media Luna Roja
الاتحاد الدولي لجمعيات الصليب الأحمر والهلال الأحمر

KENYA: DROUGHT

Appeal no. 18/04
17 August 2004

The Federation's mission is to improve the lives of vulnerable people by mobilizing the power of humanity. It is the world's largest humanitarian organization and its millions of volunteers are active in over 181 countries.

In Brief

THIS EMERGENCY APPEAL SEEKS CHF 3,561,767 (USD 2,785,900 OR EUR 2,311,300) IN CASH, KIND, OR SERVICES TO ASSIST 200,000 BENEFICIARIES FOR SIX MONTHS (ENDING 28 FEBRUARY 2005)

[\(click here to go directly to the attached Appeal budget\)](#)

All International Federation assistance seeks to adhere to the Code of Conduct¹ and is committed to the Humanitarian Charter and Minimum Standards in Disaster Response² in delivering assistance to the most vulnerable. For support to or for further information concerning Federation programmes or operations in this or other countries, or for a full description of the national society profile, please access the Federation's website at <http://www.ifrc.org>

For further information specifically related to this operation please contact:

- In Kenya: Mary Kuria, Secretary General, Kenya Red Cross Society, Nairobi; Email kuria.mary@kenyaredcross.org; Phone 254.20.60.06.69; Fax 254.20.60.35.89;
- In Uganda: Anitta Underlin, Federation Head of East Africa Sub-Regional Office, Kampala; Email ifrcke42@ifrc.org; Phone 256.31.26.32.48; Fax 256.41.25.81.84
- In Geneva: Josse Gillijns, Federation Regional Officer for Eastern Africa, Africa Dept.; Email josse.gillijns@ifrc.org; Phone 41.22.730.42.24 ; Fax 41.22.733.03.95

For longer-term programmes, please refer to the Federation's Annual Appeal for East Africa sub-regional programmes no. 01.08/2004.³

The situation

The current drought in Kenya is a direct consequence of the erratic and uneven distribution of rainfall during 2003, and constitutes another chapter in a history of recurrent droughts alternating with floods that affected the country during the past decade. A rapid food security assessment to quantify the failure of previous and present year's rains –conducted recently by authorities and humanitarian organisations - indicates that vulnerability to food insecurity is highest among the pastoralists and small-scale agriculturalists in the arid and semi arid lands.

The Ministry of Agriculture estimates that nearly 20% of the expected national output has been lost, and reduced its projections from 2.3 to 2 million MT. Floods in April were followed by unusual dry weather in May which damaged the bean crop, thereby reducing the estimated harvest from 1.8 to 1.35 million MT.

¹ Code of Conduct - <http://www.ifrc.org/publicat/conduct/>

² Humanitarian Charter (SPHERE) - <http://www.sphereproject.org/>

³ Annual Appeal (includes Kenya, Rwanda, Uganda) - http://www.ifrc.org/cgi/pdf_appeals.pl?annual04/010804.pdf

Kenya: Drought; Emergency Appeal no. 18/2004

The current drought puts in danger the lives of 2.3 million people living in 26 districts totalling 200 administrative divisions across Kenya. The Kenyan President declared it a national disaster and expressed fears that many more may face starvation if the response is not swift. This Appeal is launched to enable the Kenya Red Cross Society⁴ (KRCS) to assist the 200,000 most vulnerable drought-affected people in the districts of Kwale and Makueni for a period of six months (see attached map).

In agreement with national and local authorities the KRCS, which coordinates all humanitarian activities at the national level, decided to focus particularly in the districts of Kwale, in the Coast Province, and Makueni, in Eastern Province, where the national society is already operational and the degree of vulnerability is particularly high (see attached map).

In only one month a sharp increase – from 10 to 21% of the population - in the numbers of people in need of assistance was noted in Makueni. Maize stocks in this marginal agricultural district have been compounded by a very high incidence of aflatoxin contamination. CDC⁵ confirmed that 121 deaths due to aflatoxicosis have occurred mainly in Makueni.

Acute malnutrition affecting especially children is already evident in Marsabit and Turkana, where Global Acute Malnutrition levels reached over 20% and 30%. In other areas, diarrhoea, measles and respiratory tract infections are likely to affect children under five first. Any delay in food distribution and provision of minimum health and care services may further aggravate this situation.

The rapid drying of the temporary water sources is putting a severe strain on livestock condition. Red Cross staff report that people and cattle have to walk up to 8 hours a day to reach a water point; the previous average was 3 hours. While competing for water the weakest will resort to consuming dirty stagnating water from unprotected sources or swamps. As the dry season progresses the shortages of water and forage lead to an increase livestock movement in several pastoral and agro-pastoral areas in Northern, Eastern, Coast and Central provinces. The risk of conflict over depleted resources between pastoralists and farmers is high in many regions.

With 80% of the crop having reached the permanent wilting point in Eastern Province there is an increased demand for cereals and pulses, with only very limited stocks available. In Makueni, a bale of maize - 24 kg - now sells for KES 1,000; previously, the bale cost KES 400.⁶ Meanwhile livestock prices are 40% lower than during the pre-drought period.

In Kwale, in the Coast Province, where nearly 50% of the population lives below the poverty line, the present drought has simply made life more miserable. Sale of livestock increased considerably leading to a depletion of the households' assets. It also led to a decline in price. In Kwale a cow is sold for KES 4,000, less than half its merchant value three months ago.

This destructive combination of low livestock prices and increased grain prices resulted in high levels of food insecurity. The sale of charcoal, once a source of decent revenue is no longer profitable. Red Cross volunteers report about thousands of charcoal bags lined up for sale along the Nairobi-Mombasa road being sold for KES 80 instead of the traditional price of KES 140. Drought has also made the demand for casual labour in the larger farms negligible, further limiting income opportunities.

Red Cross and Red Crescent action

For the third consecutive year, the Kenyan authorities have entrusted the KRCS as lead agency for the overall relief operation in the country. The national society is part of the Kenya Food Security Group which coordinated an interagency assessment targeting the most severely affected areas. Makueni and Kwale field officers, members of the national emergency response team of the KRCS, were part of the joint the assessment team which included representatives of the Office of the President, WFP, World Vision, UNICEF, Care, Oxfam and AMREF. WFP and UN OCHA have relied on the above assessments in the preparation of their recently-launched flash emergency

⁴ Kenya Red Cross - <http://www.ifrc.org/where/country/check.asp?countryid=93> or <http://www.KenyaRedCross.org>

⁵ CDC - U.S. Centers for Disease Control and Prevention

⁶ KES – Kenya Shilling; the current exchange rate is approximately KES 80:USD 1

Kenya: Drought; Emergency Appeal no. 18/2004

appeal (joint agency assessment reports available upon request). In a similar coordinated fashion, this Appeal has been developed in close coordination with UN agencies, and complements the strategies outlined in the UN Flash Appeal for Kenya issued on 10 August 2004.

The KRCS has already conducted two food distributions in the Kwale district thanks to donations made by the corporate sector in Mombasa and money received from a public “Save a life” fund initiated by the media and banking sectors to which the general public contributes. To date, the Kenyan public and private sectors have donated KES 18 million (approximately CHF 277,000) towards drought relief activities.

Food has also been donated by WFP through the government. All distributions are conducted by members of the communities concerned under the supervision of a national society field officer and community leader.

On 9 June the KRCS dispatched three ICRC trucks to Kitui and Makueni, carrying part of the 20,000 bags of maize and vegetable oil received from the Office of the President. An additional consignment of 450 bags of beans is being distributed as this Appeal is launched. These distributions helped replace food reserves that were contaminated with aflatoxins and were posing a serious threat to human life. The risks of contamination with poisonous food have been averted but the stocks have already been exhausted.

The national society has been part of a series of assessment missions and conducted several food distributions outside the present appeal areas, in Garissa, Machakos and Kitui. These activities will continue independent of the present appeal based on requests from operational partners.

The needs

Immediate Needs

Annexes 1 and 2 reflect the current monthly food requirements in two districts targeted by the Kenya Red Cross; these tables were compiled by the Kenya Food Security Steering Group, of which the Kenya Red Cross is a member. The monthly food requirements represent only 75% of the actual needs. In the Makueni district the vulnerability is particularly high in three of the 18 divisions. Indeed, in Makindu, Kibwezi and Mtito-Andei as much as 60% of the population is affected, that is 134,000 of a total of 184,600 identified beneficiaries. In the Kwale district vulnerability levels reach 30% (Kubo Division) and 44% (Samburu Division).

Please refer to the annexes that appear after the signature page of this document:

- Annex 1: Monthly food requirements in Makueni District (in MT)
- Annex 2: Monthly food requirements in Kwale District (in MT).

With at-risk children, supplementary food is a compelling need for some 40,000 children in the two districts. The need for clean drinking water for both human and animal consumption is stringent. In the present extreme living conditions people are likely to resort to unhealthy behaviour in terms of both nutrition and health. Health education activities – covering issues ranging from measles and malaria, to clean sanitary environment and HIV and AIDS - directly addressed to the population at the distribution sites are much needed. The risk of conflict over meagre resources must be avoided and defused. Dissemination of humanitarian values and fundamental principles during meetings with community leaders appear necessary. In order to maintain and prevent the situation from deteriorating, advocacy and information activities must be intensified.

Coordination

The Kenya Food Security Meeting (KFSM) and the Kenya Food Security Steering Group (KFSSG), both under the Office of the President, are the main structures through which collaboration, information sharing, planning and formulation of drought mitigation guidelines and policies take place. KFSM brings together all stakeholders that include Government Ministries, International Organizations, the United Nations system and Non-governmental Organizations including Kenya Red Cross Society.

Structures at the district level will remain the focal point for drought mitigation issues because they provide the main link between communities and national structures. The District Steering Group (DSG) is the main institution for information sharing and planning at district level where all proposals and action plans are agreed upon.

All mitigation programs will be designed with sufficient consultation at community level, using and enhancing community structures where possible, and ensuring an equal representation of men and women on decision-making bodies. Care will be taken not to undermine initiatives already in place through development programming and to link the mitigation activities to sustainable structures where possible.

Regular updates on programs will be provided at district level and sent to national structures as appropriate. This will also ensure the sharing of experiences between districts.

The Proposed Operation

Due to the present humanitarian imperative, the national society will conduct direct food distributions for the 200,000 most vulnerable beneficiaries in the districts of Kwale and Makueni (see attached map) during the first three months of the operation. Food will be provided by the government. This Appeal and the budget therefore include a significant transport component, and the associated costs⁷.

Although current malnutrition levels are under control, the assessment concluded that the risk for the situation to deteriorate exists. Preventative measures have been taken, with UNICEF undertaking to conduct supplementary feeding programmes in schools. This approach will present the advantage of not disrupting school attendance. To complement this, Red Cross volunteers will conduct distributions estimated to reach some 40,000 children under five – approximately 20% of the target beneficiary population; this will be done in close cooperation with the health ministry.

For the purpose of this Appeal, the FAO will purchase drought-resistant seeds to cover the needs at national level. In Makueni and Kwale these will be distributed by the Kenya Red Cross who undertakes to provide the necessary farming tools to their 200,000 beneficiaries.

A detailed assessment is presently carried out by the Kenya Red Cross to determine the exact needs and locations for water and sanitation interventions. The national society intends to rehabilitate damaged water points and drill or rehabilitate additional wells in order to reduce the long distances that both people and animals must cover. Water trucking to the most endangered communities with a priority for medical institutions and schools will also be conducted.

The drought has increasingly forced people to eat roots and wild plants. Cases of diarrhea have already been reported. Sanitation activities will focus on the construction of latrines in those villages most at risk following the conclusion of the present Kenya Red Cross assessment.

The HIV virus is spreading faster in conditions of poverty exacerbated by emergency situations. Where food is scarce the vulnerability to HIV infection and is higher. There are already trained peer educators in but more should attend training. The national society intends to identify those HIV/AIDS sufferers and tend to their nutritional and psychological needs.

Throughout the operation, through its information unit, the national society intends to conduct advocacy and information activities aimed at keeping the general public, authorities and donors well informed of the humanitarian situation, the progress and impact of their activities on the people assisted. Conflict prevention activities including dialogues with community leaders and dissemination of humanitarian values and fundamental principles will be organized alongside with food distribution.

The operation is expected to reinforce the capacities of the staff and volunteers in the two branches. Skills in relief distributions and the awareness of the need for co-ordinated disaster preparedness will be improved. In addition the national society plans to organize training for Regional-based Disaster Response teams in the high risk areas.

⁷ Transport costs are estimated on the basis of "Primary Transport - Port to Branch" (Nairobi to Makueni and Nairobi to Kwale) and "Secondary Transport - distribution points" (From Makueni and Kwale to the various distribution sites) Costs are calculated on the basis of KES 2,500/MT/km (for primary transport) and KES 5,000KES/MT/km (for secondary transport).

Goal: To assist 200,000 targeted beneficiaries cope with the present drought, reduce its impact and initiate recovery activities.

Objective 1: Transport and distribute adequate food rations to the drought affected population in the districts of Makueni and Kwale.

Activities planned

- Transport and distribute 75% food rations consisting of 10.35 Kg of maize, 1.8 kg of beans and 0.56 litres of oil per person per month to 200,000 beneficiaries for six months in the districts of Kwale and Makueni.
- Transport and distribute supplementary feeding (Unimix provided by UNICEF) to 40,000 children under five.

Expected results

- 200,000 beneficiaries received adequate food rations and coped in dignified conditions with the effects of the present drought.
- Malnutrition levels, especially among children are maintained to normal levels.

Objective 2: Assist the target population in recovering from drought through support to their agricultural livelihood.

Activities planned

- Transport and distribute FAO-donated drought-resistant seeds (maize, sorghum, cow peas, garden peas and green grams) for 33,333 families.
- Purchase, transport and distribute farm tools (pangas/machetes and mattocks).

Expected results

- Beneficiaries in Makueni and Kwale districts received and planted drought resistant seeds.
- Living conditions have improved and the crops matured.

Objective 3: Reduce morbidity and vulnerability from water related diseases by improving access to safe drinking water and promoting environmental health and sanitation in the districts of Makueni and Kwale.

Activities planned

- Rehabilitate and/or construct water structures and provide fresh water.
 - Rehabilitate/ construct two boreholes, six shallow wells and two earth dams/pans.
 - Protect two springs.
 - Conduct water trucking to schools and medical institutions.
- Construct 12 latrines and 12 additional bathing facilities at the water points.
- Form and train 12 water committees and hygiene promotion groups.
- Conduct health education activities on malaria, diarrhoeal diseases and measles.

Expected results

- The population in the target zones has access to safe drinking water.
- Selected schools and medical institutions received trucked drinking water.
- The health condition of the beneficiaries remains stable and there is an increased awareness on water-borne and other diseases (malaria, measles, etc.).

Objective 4: Reduce vulnerability to, and impact of HIV/AIDS by encouraging behaviour change, communication and improved care and support for people living with HIV/AIDS (PLWHA).

Activities planned

- Train 20 community peer educators on HIV/AIDS prevention, care and support.
- Conduct HIV/AIDS peer education sessions during food distributions.
- Conduct awareness and outreach sessions on HIV/AIDS prevention, care and support.
- Identify and follow up distribution of nutritional supplies to bedridden clients.

Expected results

- Trained peer educators contribute to behaviour change within the community.
- Increased knowledge and awareness of the disease among beneficiaries.
- Identified bed-ridden PLWHA have received care and psychological support.
- The population has received adequate educational material.
- Kenya Red Cross is perceived as an important actor in the fight against HIV and AIDS.

Objective 5: Advocate in favour of the drought-affected population and contribute to conflict prevention efforts.

Activities planned

- Deploy the public relation officer to cover and present the realities in the affected area.
- Facilitate and encourage media access to the Red Cross operational areas.
- Conduct dissemination activities among beneficiaries in conjunction with food distribution and health activities.

Expected results

- Press release and news articles accompanied by photographs are produced and posted on the web sites of the Kenya Red Cross and Federation.
- Journalists had contact with the beneficiary population and Red Cross workers.
- Leaders and members of the community have been sensitised with regard to the need of living in tolerance during the present crisis.
- Drought-related conflicts have been avoided or defused.

Objective 6: Strengthen the capacity of the Kenya Red Cross [national headquarters, Makueni branch and Kwale branch] and empowering the target community to minimise the long term effects of the drought.

Activities planned

- Train branch leadership and Red Cross Action teams on the management of a relief programme, disaster management including assessments, sphere, code of conduct etc.
- Strengthen branch procurement capacity.
- Increase reporting and information skills at branch level.
- Train 30 community members on targeting beneficiaries, relief distribution, basic health skills as well as reporting and procurement.
- Establish Early Warning Systems.
- Provide basic equipment to the Kwale and Makueni branches.

Expected results

- Branch leadership and Action team's members are familiar with disaster management concept.
- Selected staff attended procurement sessions.
- The branch produces timely and accurate reports and information skills are increased.
- Thirty community members have improved their disaster response skills.

Kenya: Drought; Emergency Appeal no. 18/2004

- Early Warning Systems are in place in the two branches.
- The two branches received basic equipment.

Capacity of the National Society

The Kenya Red Cross headquarters with the support of its volunteers across the country is in a good position to coordinate distribution of relief items to drought victims. The national society has been involved several similar exercises in the past. In the 1990s it was involved in the distribution of relief items during the Somali refugee influx, and since then in a number of drought response operations. Last year as leading humanitarian agency it coordinated the humanitarian response to floods in various parts of the country.

The Kwale branch has an experienced field officer who was involved in relief coordination during refugee operations. The branch and its 20 volunteers were also involved in humanitarian activities during the 1997 tribal clashes that opposed the coastal Digo community to the up-country, mainly Luo community. If needed, further support can be mobilized by the neighbouring Mombasa branch.

The Makueni branch counts 140 volunteers recently trained in disaster management, First Aid and dissemination and promotion of humanitarian values and fundamental principles.

In managing disasters affecting the country Kenya Red Cross has very good relations with the government and works closely with other organizations as well. As during previous emergencies close technical support is provided by the Federation Eastern Africa Regional Delegation in Nairobi.

The director of the Disaster Preparedness and Response department is coordinating the present operation while utilizing the expertise of other technical units including Health, Organizational Development, Information and Finance.

The operation will require the engagement of additional personnel both at the Headquarter and field level to ensure smooth running of the relief operation, and that other planned activities are not adversely affected.

In each of the project areas a Relief Coordinator, a Logistics Officer, an Administrative/Accounts officer, 6 food monitors and support staff will be recruited. At headquarters, a project officer and information/administration assistant will also be recruited for the duration of the operation. A Project coordinator will provide additional support from headquarters the existing organizational structure. (See Annex 4: Kenya Red Cross Society Organizational Structure below.

Capacity of the Federation

The Disaster Management Department of the Federation Regional Delegation in Nairobi will work closely with the Kenya Red Cross in implementing the present operation. Members of the Regional Disaster Response team are ready for deployment on request by the national society. The Regional Logistics as well as Health and Care Units are available for any technical support required. The Regional Information Unit provides constant support in conflict prevention, advocacy and information activities.

The Federation Head of East Africa Sub-Regional Office maintains regular contact with the Kenya Red Cross Secretary General.

Monitoring and Evaluation of the operation

The Kenya Red Cross Disaster Preparedness and Response department will work closely with branches in the affected areas to ensure proper delivery of humanitarian assistance to the drought victims. With support from the International Federation, it will assume the overall monitoring role to ensure accountability as well as timely and quality response. The recruitment of staff will ensure that relevant documents (delivery notes, way bills, distribution lists) are available and the relief articles can be tracked. Monthly reports will be prepared, to ensure an effective operation, and an evaluation will be conducted at the end of the operations to capture lessons learnt.

Kenya: Drought; Emergency Appeal no. 18/2004

Annexes

The following annexes are attached below:

- Annex 1: Monthly food requirements in Makeni District (in MT)
- Annex 2: Monthly food requirements in Kwale District (in MT)
- Annex 3: Rainfall Anomalies, 2004 Long-rains season: 20 March to 30 June 2004
- Annex 4: Kenya Red Cross Society, Operational Structure
- Annex 5: Budget summary

Susan Johnson
Director
National Society and Field Support Division

Markku Niskala
Secretary General

[Annexes 1 – 5 below; click here to return to the title page and contact information.](#)

Annex 1: Monthly food requirements in Makueni District (in MT)

Makueni District				Monthly food requirements (in MT)				
Division	2004 Pop.	Pop. (%) in need of food aid	Pop. In need of food aid	Cereal	Pulses	Veg. oil	Salt	Totals
Tulimani	36,825	8%	3,000	31.05	5.40	1.69	0.45	38.59
Mbooni	63,031	9%	5,500	56.93	9.90	3.09	0.83	70.74
Kisau	56,869	8%	4,300	44.51	7.74	2.42	0.65	55.31
Kalawa	29,648	6%	1,800	18.63	3.24	1.01	0.27	23.15
Kilome	52,021	8%	4,100	42.44	7.38	2.31	0.62	52.74
Kilungu	76,270	8%	6,200	64.17	11.16	3.49	0.93	79.75
Kaiti	51,912	8%	4,100	42.44	7.38	2.31	0.62	52.74
Kasikeu	40,216	8%	3,200	33.12	5.76	1.80	0.48	41.16
Mbitini	54,864	7%	4,100	42.44	7.38	2.31	0.62	52.74
Wote	45,433	8%	3,600	37.26	6.48	2.03	0.54	46.31
Matiliku	43,760	8%	3,400	35.19	6.12	1.91	0.51	43.73
Kathonzweni	74,014	8%	6,100	63.14	10.98	3.43	0.92	78.46
Nguu	21,675	6%	1,200	12.42	2.16	0.68	0.18	15.44
Makindu	56,632	60%	34,000	351.90	61.20	19.13	5.10	437.33
Kibwezi	90,338	61%	55,000	569.25	99.00	30.94	8.25	707.44
Mtito-Andei	75,056	60%	45,000	465.75	81.00	25.31	6.75	578.81
Tsavo West	116	0%	-	-	-	-	-	-
Chyulu Game Reserve	2	0%	-	-	-	-	-	-
Totals	868,683	21%	184,600	1,910.61	332.28	103.84	27.69	2,374.42
Total MT for six months								14,246.51

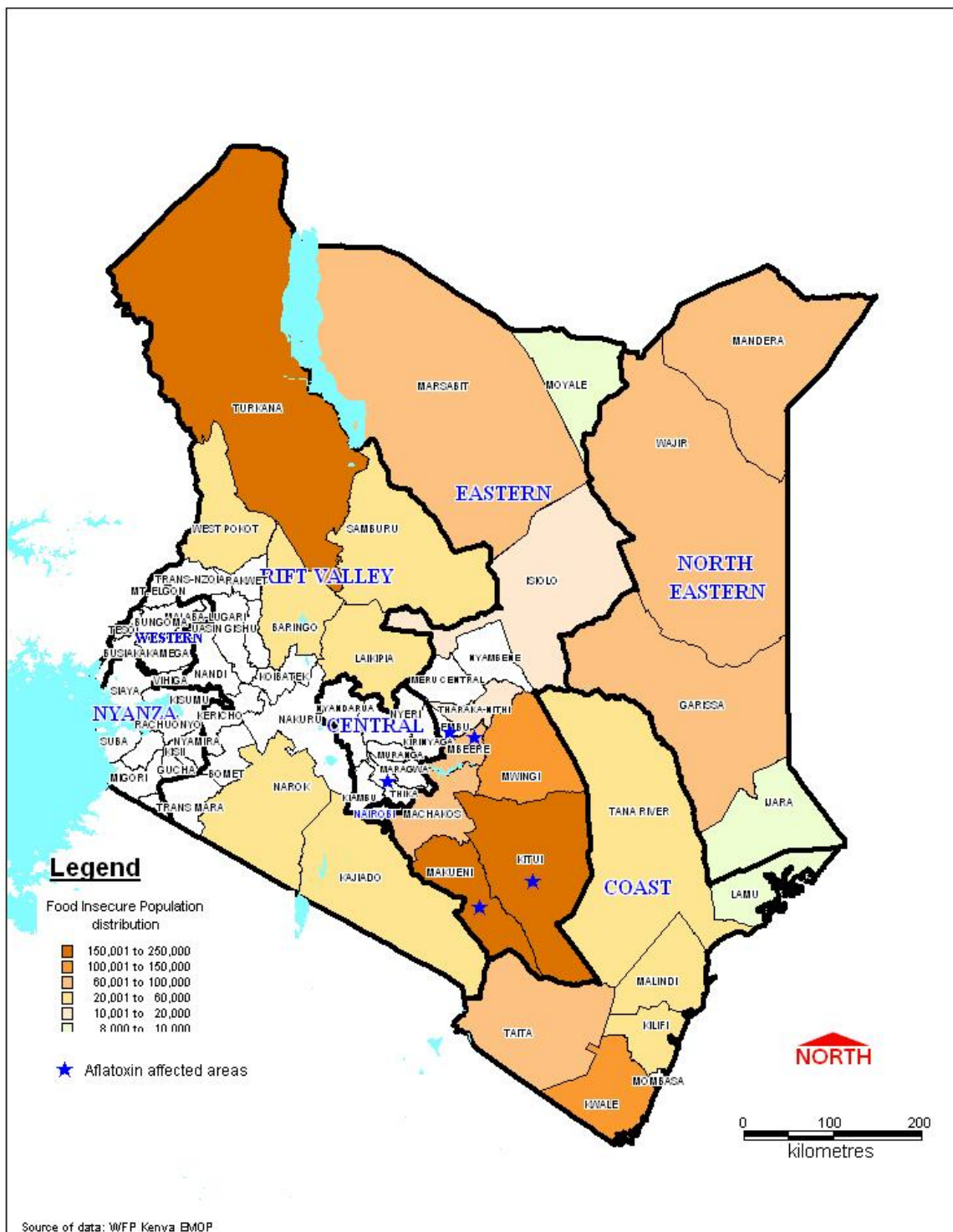
Annex 2: Monthly food requirements in Kwale District (in MT)

Kwale District				Monthly food requirements (in MT)				
Division	2004 Pop.	Pop. (%) in need of food aid	Pop. In need of food aid	Cereal	Pulses	Veg. oil	Salt	Totals
Samburu	102,469	44%	44,800	463.68	80.64	25.20	6.72	576.24
Kinango	81,095	23%	18,750	194.06	33.75	10.55	2.81	241.17
Matuga	81,489	3%	2,625	27.17	4.73	1.48	0.39	33.76
Msambweni	138,810	9%	12,000	124.20	21.60	6.75	1.80	154.35
Lunga Lunga	99,672	14%	14,400	149.04	25.92	8.10	2.16	185.22
Kubo	54,909	30%	16,200	167.67	29.16	9.11	2.43	208.37
Shimba Hills	152	0%	-	-	-	-	-	-
Totals	558,597	19%	108,775	1,125.82	195.80	61.19	16.32	1,399.12
Total MT for six months								8,394.71

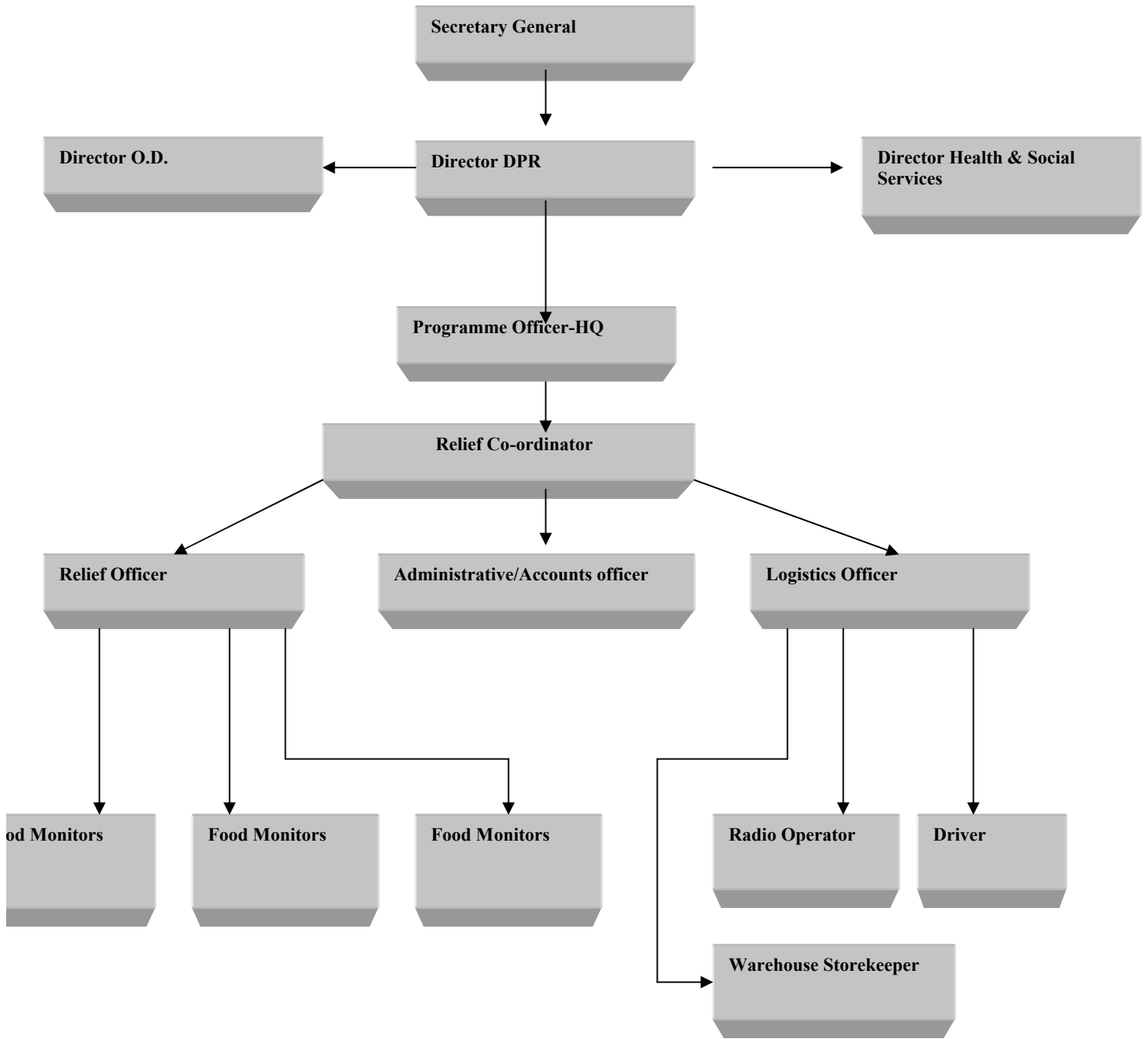
Note: Based on the above results, the Kenya Red Cross will concentrate its activities in the most vulnerable areas:

- Makindu, Kivwezi and Mtito-Andei Divisions of Makuenie District, and
- Samburu and Kubo Divisions of Kwale districts.

Kenya Food Insecure Population by District



Annex 4: Kenya Red Cross Society, Operational Structure



BUDGET SUMMARY

APPEAL No. 18/2004

Kenya - Drought

TYPE	VALUE	
RELIEF NEEDS		IN CHF
Food & seeds	9,240	
Water and sanitation	231,000	
Utensils & tools	153,999	
TOTAL RELIEF NEEDS		394,239
<hr/>		
<u>CAPITAL EQUIPMENT</u>		
Vehicles	4,620	
Computers & telecom. equipment	61,600	
<u>PROGRAMME SUPPORT</u>		
Programme support (6.5% of total)	231,515	
<u>TRANSPORT STORAGE & VEHICLE COSTS</u>	2,378,651	
<u>PERSONNEL</u>		
Expatriate staff	2,400	
National staff	159,399	
Consultants	10,102	
Workshops & training	45,076	
<u>ADMINISTRATIVE & GENERAL SERVICES</u>		
Information expenses	55,902	
Administrative & general expenses	218,263	
TOTAL OPERATIONAL NEEDS		3,167,528
<hr/>		
TOTAL APPEAL CASH, KIND, SERVICES		3,561,767
<hr/>		
LESS AVAILABLE RESOURCES (-)		0
<hr/>		
NET REQUEST		3,561,767
<hr/>		