

OPERATIONS UPDATE



International Federation of Red Cross and Red Crescent Societies
Fédération Internationale des Sociétés de la Croix-Rouge et du Croissant-Rouge
Federación Internacional de Sociedades de la Cruz Roja y de la Media Luna Roja
الاتحاد الدولي لجمعيات الصليب الأحمر والهلال الأحمر

ASIA: EARTHQUAKE & TSUNAMIS

19 January 2005

The Federation's mission is to improve the lives of vulnerable people by mobilizing the power of humanity. It is the world's largest humanitarian organization and its millions of volunteers are active in over 181 countries.

In Brief

Revised Preliminary Appeal No. 28/2004; Operations Update no. 23; Period covered: 18-19 January 2005; Appeal coverage: 77.1% ([Click here to view the provisional contributions list attached, also available on the Federation's website.](#))

Appeal history:

- Preliminary appeal launched on 26 December 2004 for CHF 7,517,000 (USD 6,658,712 or EUR 4,852,932) for 6 months to assist 500,000 beneficiaries.
- Disaster Relief Emergency Funds (DREF) allocated: CHF 1,000,000.
- Revised Preliminary Appeal issued on 29 December 2004, for CHF 67,005,000 (USD 59,152,246 or EUR 53,439,988) for 2 million beneficiaries for 6-8 months.
- The Preliminary Appeal was originally launched titled "Bay of Bengal: Earthquake and Tsunamis". The title was subsequently changed to "Asia: Earthquake and Tsunamis" in the Revised Preliminary Appeal launched on 29 December 2004.
- Operations update No. 16 issued on 12 January 2005 revised the Revised Preliminary Appeal 28/2004 budget to CHF 183,486,000 (USD 155,286,000 or EUR 118,669,000) with programme extensions for Sri Lanka, Indonesia, the Maldives and East Africa.

Highlights of the Day:

- **The death toll in Indonesia soars by 50,000 as the government declares most of the people previously listed missing, as dead. The total number of deaths in Indonesia is now over 166,000, which brings the total number of deaths in affected countries to over 213,000.**
- **A total of 77 relief flights have now arrived in the various affected countries and a further 31 flights are in the Federation relief pipeline, making a total of 108 relief flights coordinated through the Federation.**
- **The Federation's recovery assessment team for Indonesia arrived in Jakarta today to commence its work on short- and medium-term recovery plans.**
- **Recruitment of Federation delegates for the tsunami operations continues; a total of 30 delegates are urgently needed for operations in Indonesia, Sri Lanka and Maldives. In particular, a head of operations for Indonesia is very urgently sought.**
- **National societies and Federation delegations in South Asia – from Afghanistan, Bangladesh, Nepal and Pakistan – have all contributed staff to the Regional Disaster Response Teams and the recovery assessment teams in the disaster-affected countries.**

For further information specifically related to this operation please contact:

In Asia:

- **India, New Delhi:** Alan Bradbury; Regional Programme Coordinator; phone: +91.98.1030.1984; email: ifrcin134@ifrc.org or India: Bob McKerrow, Head of Regional Delegation, phone: +91.98.1000.1534; Azmat Ulla, Head of Delegation, phone: +91.98.1039.9650.
- **Sri Lanka:** Alisdair Gordon-Gibson; Head of Delegation; phone: +94.77.755.7001
- **Indonesia:** Ole J Hauge, Head of Delegation; phone: +622 1791 91 841; mobile: +628 11 824 859; fax: +622 1 79180 905; email: ifrcid01@ifrc.org and Latifur Rachman, Disaster Management Delegate; phone: +62.811.82.6624; fax: +62.217.18.0905 email: ifrcid05@ifrc.org
- **Myanmar:** Joanna Maclean, Head of Delegation, phone: +95.1.383686 email: ifrcmm01@redcross.org.mm

- *Malaysia: Dr Selva Johti, National Disaster Management Chairman, Malaysian Red Crescent Society; phone: +60.2.6138.2325, mobile: +60.1.2234.0310; fax: +60.3.6138.2325*
- *Thailand: Lt. Gen. Amnat Barlee, Director of Relief and Community Health Bureau, Thai Red Cross; phone: +66.2.251.7853 ext. 2202/251.7442, fax: +66.2.252.7976; email: abarlee@webmail.redcross.or.th*
- *Thailand, Bangkok: Dr. Ian Wilderspin, Head of Disaster Risk Management Unit, phone: +662.640.8211; fax: +662.661.8220; email: ifrc22@ifrc.org and Bekele Geleta, Head of Regional Delegation; mobile: +66 18215495; email: ifrc23@ifrc.org*

In Geneva:

- *Iain Logan, Head of Tsunami Operations Coordination, Geneva; +41.22.730.4258, email: iain.logan@ifrc.org*
- *Indonesia: Charles Evans, Southeast Asia Desk, Geneva; phone: +41.22.730.4320; fax: +41.22.733.0395; email: charles.evans@ifrc.org*
- *Sri Lanka: Suzana Harfield, Desk Officer, Geneva; phone: +41.22.730.4353; email: suzana.harfield@ifrc.org*
- *Myanmar, Malaysia, Thailand, Maldives and Somalia: Wilson Wong, Desk Officer, Geneva; phone: +41.22.730.4302; email: wilson.wong@ifrc.org*
- *India: Jagan Chapagain, Desk Officer, Geneva; phone: +41.22.730.4316; email: jagan.chapagain@ifrc.org*
- *Media Department, Sian Bowen, phone: +41.22.730.4428; email: sian.bowen@ifrc.org*
- *Logistics Department for mobilisation of relief items, Erling Brandtzaeg, logistics officer for Indonesia and Myanmar, Geneva; phone: +41.22.730.4269; email: erling.brandtzaeg@ifrc.org, Misha Chitashvili, logistics officer for Sri Lanka and Maldives, Geneva; phone: +41.22.730.4305; email: misha.chitashvili@ifrc.org and Isabelle Sechaud, general coordination of tsunami operations logistics cell, Geneva; phone: +41.22.730.4367; email: isabelle.sechaud@ifrc.org*

In Africa:

- *Nairobi Regional Delegation; Anitta Underlin, Federation Head of Eastern Africa Regional Delegation, Nairobi; email: ifrc03@ifrc.org; Phone: +254.20.283.51.24; Fax: +254.20.271.84.15; Steve Penny, Regional Disaster Management Coordinator; Phone: +254.20.283.5117; Fax: +254.20.271.8415; email: ifrc78@ifrc.org*
- *In Geneva: Josse Gillijns, Regional Officer for Eastern Africa, Africa Dept.; email: josse.gillijns@ifrc.org; Phone: +41.22.730.42.24; Fax: +41.22.733.03.95*

All International Federation assistance seeks to adhere to the [Code of Conduct](#) and is committed to the [Humanitarian Charter and Minimum Standards in Disaster Response](#) in delivering assistance to the most vulnerable. For support to or for further information concerning Federation programmes or operations in these or other countries, or for a full description of the national society profiles, please access the Federation's website at <http://www.ifrc.org>

Background

The magnitude 9.0 earthquake that struck the area off the western coast of northern Sumatra on Sunday morning, 26 December 2004, at 7:59 am local time (00:59 GMT) triggered massive tidal waves, or tsunamis, that inundated coastal areas in countries all around the Indian Ocean rim – from Indonesia to Somalia. Sri Lanka, the Indonesian province of Aceh, four states of southern India, the Maldives, coastal areas of Thailand, Malaysia, and Myanmar were the most severely affected. The earthquake epicentre was located at 3.30 N, 95.78E at a depth of 10 kilometres. The area is historically prone to seismic upheaval due to its location on the margins of tectonic plates. However, tidal waves of this magnitude are rare and therefore the level of preparedness was very low.

Summary of the human toll caused by the tsunami as of 19 January

Countries	Dead	Missing	Displaced	Homeless	Sources
Indonesia	166,320	6,245	n/a	617,159	Government
Sri Lanka	30,922	5,565	437,482	480,000	Government
India	10,749	5,640	647,599	20,000	Government
Maldives	82	21	21,663	n/a	Government
Thailand	5,318	3,199	n/a	n/a	Government
Myanmar	59	10	n/a	3,200	Government
Malaysia	68	50	n/a	4,296	Delegation
East Africa	244	n/a	52,000	n/a	Government
Total	213,762	20,730	>1,158,744	>1,124,655	

Note: East Africa covers tsunami-affected countries of Kenya, Madagascar, Seychelles, Somalia and Tanzania.

Thousands of staff, relief and medical personnel, and volunteers of the Red Cross and Red Crescent societies of the tsunami-affected countries have provided a vital initial response, in search and rescue, clean-up, providing temporary shelter and immediate relief assistance, emergency medical services, psychological first aid and tracing. It is estimated that over 5,000 Red Cross and Red Crescent volunteers and 76 relief and medical teams have been mobilised in the disaster-affected areas.

The Federation immediately launched a Preliminary Emergency Appeal on the day of the disaster with a focus on Sri Lanka, Indonesia and the Maldives. On 3 January 2005, the ICRC launched budget extensions additional to its 2005 Emergency Appeal for Indonesia and Sri Lanka. Along with initial support from the country and regional delegations, the Federation deployed within 24-72 hours three [Field Assessment and Coordination Teams \(FACT\)](#) and 14 [Emergency Response Units \(ERU\)](#) in the sectors of water and sanitation, health care, aid distribution, telecommunications, and logistics/transportation to Sri Lanka, Indonesia and the Maldives.

A total of 77 relief flights have now arrived in the various affected countries and a further 31 flights are in the Federation relief pipeline, making a total of 108 relief flights coordinated through the Federation.

Operational Developments

Indonesia

Overview

The Indonesian Ministry of Health today announced that a large number of people previously listed as missing are now declared dead. This raises the current death toll to over 166,000 in Indonesia alone. A government spokesperson indicated that the new information has been cross-checked and is correct, but said also that the final death toll might never be known. The number of missing is now 6,245.

In Banda Aceh, monsoon rains flooded the streets, as overloaded drainage ditches ceased working – with people having to wade through knee-high water. While the half of the city that took the worst damage remains largely closed, shopkeepers who did open reported good business.

The west coast remains inaccessible by land. According to an interview with one of the military pilots, medical airlifts have now slowed down and people rely on shipments of food and water. But there are still pockets of desperation – with thousands of people previously hiding in the hills, now streaming down and setting up makeshift camps in their devastated villages. WFP also said that the agency was still trying to reach many survivors currently living in isolated areas without food, clothing or shelter and that they are still gathering data on both the locations and the number of survivors.

FAO announced that it would focus on resuscitating the livelihoods and socioeconomic activities of fishermen affected by the tsunami. Within the next two weeks, the agency proposes to distribute tools for repairing boats, fishing gear and traps, as well as to provide assistance for redesigning vessels to be more adaptive to the situation. It is estimated that 17 percent of the area's fishing infrastructure was affected. The coast's agriculture was also severely damaged or destroyed by seawater. Fortunately, in this instance, the rainy season helps to keep the soil damp and prevent long-term damage. FAO will also be distributing fertilizer, seed, small livestock, animal feed and vaccines to restore the livelihoods of farmers in the affected coastal agricultural areas.

The overall situation is said to be fragile, but generally not as bad as aid organizations had feared – although the heavy rains may yet exacerbate the health situation. The malaria season has begun, and there are concerns that the extraordinary increase in stagnant pools of water in the aftermath of the tsunami may increase malarial mosquito breeding and therefore incidents of malaria. Thus far, between 10 and 20 new cases are being reported each day.

According to the WFP Chief of Nutrition, malnutrition is not widespread and diseases not rampant. WFP aid efforts are now shifting to supplying ration packs of staples such as rice, rather than emergency hand-outs. WFP food allocation throughout the affected area has reached 330,000 people thus far, equivalent to 5,000 MT of rice, cooking oil, noodles and fish, and distributed through contracting partner agencies. Today's distribution was the largest to date, at 872 MT.

A nutritional survey will be conducted during February in a coordinated effort by the Ministry of Health, WHO, UNICEF and WFP. The UN is emphasizing maximum communication and cooperation with government agencies. All food aid inputs are being coordinated to provide transparent information to the government. Informal reports indicate that some people are leaving the area – whether this is temporarily or otherwise is difficult to assess.

This Friday, 21 January, is a religious holiday and all agencies are encouraged to close offices in respect of local customs.

Coordination

A coordination meeting was held on 17 January in Lhokseumawe, chaired by Indonesian Red Cross (Palang Merah Indonesia/PMI) and bringing together the leadership of Aceh chapter and its local branches, as well as North Sumatra chapter, where they have had a number of internally displaced persons (IDPs), to discuss the situation in the disaster-affected areas, to appraise operational progress to date and take further operational decisions related to future needs and roles in rehabilitation and reconstruction. The Federation, ICRC as well as some partner national societies (the Red Cross and Red Crescent societies of the Netherlands, France, Australia, Singapore and Malaysia) also participated in the meeting. This is expected to feed into the ongoing post-disaster planning process. The information should prove to be of interest in particular to the Federation's recovery assessment team, which arrived in Jakarta today and will be travelling to the affected areas over the coming weeks.

In Banda Aceh, the OCHA Humanitarian Information Centre (HIC) is now providing an information kiosk with a computer that stores all available assessments and maps. Agencies were invited to bring portable storage devices to upload or download what they would find useful for their own purposes. The HIC website resource for the Aceh province inter-agency response (www.humanitarianinfo.org) will become available as soon as the UN VSAT satellite system is operational.

UN agencies tracking systems estimate approximately 25,000 family tents and 40,000-60,000 plastic sheets have arrived in Banda Aceh through UN-monitored pipelines. With the water inundation of IDP camps in the current monsoon season, sanitation issues are an increasing concern. UNICEF has convened an inter-agency water and sanitation working group in Banda Aceh. Some 20,000 plastic latrine slabs and a large quantity of hygiene kits have arrived and are available for distribution to agencies involved in this sector.

The UN Joint Logistics Centre (UNJLC) is leading an effort to document and track the large amounts of unsolicited food and non-food items arriving in the country. The government developed a tracking system for relief distributions through the postal service, in an effort to incorporate as much data as possible from all actors in country.

Security

There has been concern in the past few days amongst the international community in Banda Aceh based on warnings received from a number of embassies about possible hostilities on foreign aid workers in the area. The increased danger in Lhokseumawe has been a particular focus and the military closed the Medan-Banda Aceh route for a 24-hour period. One agency present at the UN security briefing on 19 January related that it had not received the road closure notice, and had driven a 40-truck convoy without incident from Medan to Banda Aceh during the closure period.

At yesterday's UN inter-agency coordinating meeting, the UN security officer spoke directly with the local police commander, who had also heard the rumours, but received no reports of unusual activity nor of violence, with the exception of an arrest in an IDP camp where arms were seized from a man – however this was not deemed to be related to any insurgency activities. A UN security officer said that a five-hour curfew from midnight on UN agencies operations remains in effect, which is a standard UN Phase III level of caution, and that relief activities do not normally occur during those hours anyway. Humanitarian agencies are to notify the police of expatriate residence addresses so that extra police patrols can be deployed to these locations.

Red Cross and Red Crescent action – progress/achievements, impact, constraints

Overall Goal: Up to 100,000 internally displaced and otherwise affected families (approximately 500,000 people) in western Aceh receive adequate and timely emergency humanitarian assistance over the next six months.

The Chairman of the PMI, accompanied by a number of partner national society (PNS) representatives, travelled yesterday to Meulaboh to review operations by PMI staff and volunteers, and the newly-arrived Federation staff seconded by British Red Cross.

Three operational centres for implementation of relief plans have now been formalized, and coordination delegates identified. The three sites are Banda Aceh, Meulaboh and Medan. Banda Aceh and Meulaboh are already active, and the logistics delegate from Batam – who also served previously as the head of sub-delegation in Banda Aceh for ICRC – has been redeployed to coordinate Federation activities at Medan.

Objective 1 (emergency relief): Basic supplementary food and non-food needs of the 500,000 IDPs and most vulnerable beneficiaries are met so that they can start rebuilding their future.

Helicopter flights 17 January 2005

Aircraft	Destination	Cargo
Sykorsky	Meulaboh	Food stocks for PMI relief volunteers plus 5 passengers including 2 French Red Cross water and sanitation ERU specialists.
	Teunom	8 PMI relief volunteers on rotation plus supplies to remain self-sufficient.
Helimission	Calang	Kitchen sets and jerry cans for PMI volunteers.
	Teunom	Kitchen sets and jerry cans for PMI volunteers.

There were no boat trips with relief supplies dispatched on Tuesday, 18 January. A major shipment of emergency stocks was received at Banda Aceh airport late Monday night. The logistics team is doing an inventory to enter items into the pipeline tracking system before continuing with shipments by boat down the west coast. ICRC continues to provide both food and non-food assistance to 30,000 and 52,000 beneficiaries respectively. They are currently working primarily in Banda Aceh, as well as assessing needs along the east coast – as per the agreement reached amongst the Red Cross and Red Crescent Movement components in responding to the disaster.

Objective 2 (logistics): PMI will have a strengthened supply chain capability and capacity to ensure timely transport of material and human resources to the areas of operation.

A suitable site has been located for the construction in Banda Aceh of a 150 m² Rubb Hall, to increase relief goods storage capacity. Construction of the Rubb Hall begins today.

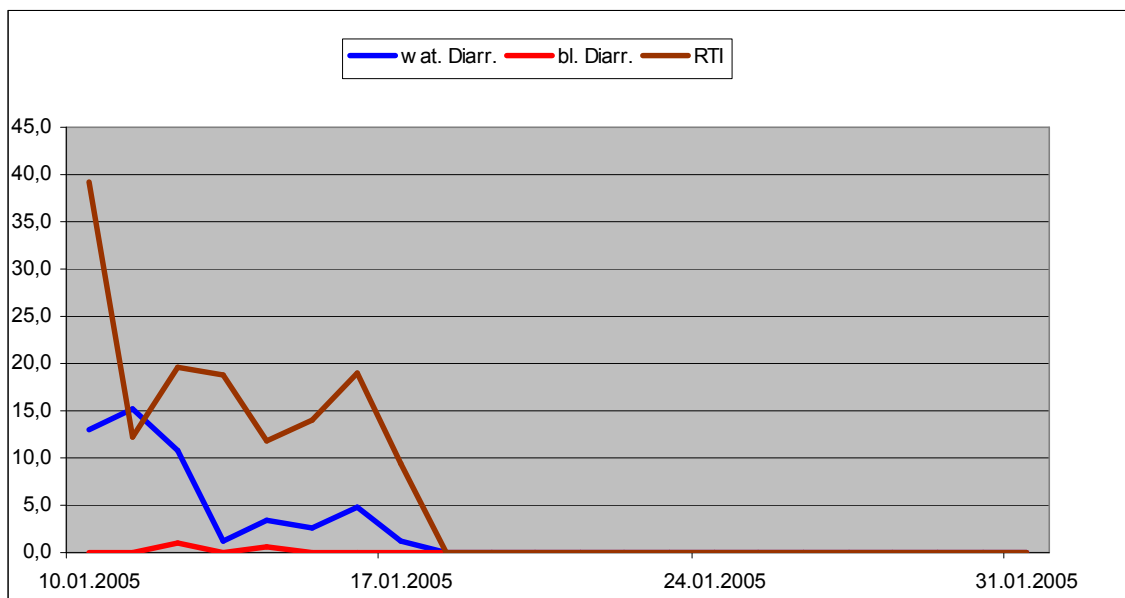
Objective 3 (health): primary health care service provided to the tsunami-affected communities and potential epidemics are prevented or adequately addressed.

Health/water and sanitation ERU in Teunom (German Red Cross)

On 15 January, an official opening ceremony of the basic health care unit (BHCU) was held in Teunom with high-ranking officials from PMI, the Ministry of Health and the local military coordinating body. This event was used to reinforce the already good contacts between partners. The ERU has been up and running since 10 January, once all of the equipment had been safely delivered (with the aid of 13 helicopter flights).

The current health-situation has been summarized as back to normal. The BHCU sees approximately 150 to 200 patients in the outpatient department each day, with a vast majority of unspecific diagnosis. They have had 3 patients with severe tetanus and remarkably all of them without visible wounds. All patients were treated and showed a good response to the therapy. They were then referred on to the ICRC Norwegian Red Cross hospital in Banda Aceh, which was felt to be better equipped to deal with eventual complications. The total number of patients seen until now is slightly over 1000. Details are presented in the following graphs:

Date	Wat. Diarr.	Bl. Diarr.	RTI	Malaria	Mening.	Fever	Ajs	Tsunami Trauma	Psychotr.	Others	Totals
10.01.2005	3	0	9	0	0	1	0	0	0	10	23
11.01.2005	25	0	20	2	0	5	1	3	0	108	164
12.01.2005	20	2	36	0	0	10	0	4	0	112	184
13.01.2005	2	0	30	2	0	8	0	6	0	112	160
14.01.2005	5	1	17	0	0	4	0	6	1	109	143
15.01.2005	4	0	21	0	0	5	0	6	1	114	151
16.01.2005	1	0	4	0	0	3	0	1	0	12	21
17.01.2005	2	0	16	1	0	19	0	4	0	130	172

Relative incidences:

The BHCU was reinforced yesterday with a medical doctor and a nurse from the Swiss Red Cross. The health staff from the former 'Puskasmas' (public health centre) is doing an excellent job. The unit consists of two doctors, four midwives, six nurses and additional administrative staff. A doctor from PMI has been working with the BHCU since the opening of the clinic and has been requested to remain permanently. About 30 PMI volunteers are completely integrated in the BHCU, in preparing food for the patients, in distributing non-food items and in undertaking outreach activities in the surrounding villages. Overall, it is a completely integrated approach of the German Red Cross, PMI and local health staff, with good support from the local authorities.

Coordination

UNICEF has formed an inter-agency coordinating group to increase coverage, cooperation and efficiency for a mass measles campaign. The UNICEF spokesperson has requested all agencies with appropriate expertise and manpower to support a concentrated vaccination programme in Banda Aceh. Thus far, according to UNICEF figures, 20,000 children have been vaccinated for measles in Aceh Province since the 26 December disaster event.

Rumours about cholera in Meulaboh have proven to be unfounded. An epidemiological team has been deployed to Meulaboh to investigate further. UNFPA is reporting an Aceh province-wide pro rata birth rate of 800 per month, many of these unattended. UNFPA is distributing maternal care health kits for agencies involved in this sector.

Objective 4 (water and sanitation): the spread/outbreak of infectious diseases is prevented through water and sanitation interventions.

A water and sanitation ERU is being deployed to Calang on the west coast of Aceh province. A combined Austrian Red Cross and Swedish Red Cross team, specializing in water treatment, supply and distribution is already on the way. The Spanish Red Cross water and sanitation ERU and the Japanese Red Cross BHCU ERU – both based in Meulaboh – are in the midst of a staff rotation.

With an increasing number of visitors to Red Cross operations landing at Meulaboh, and with the Danish Red Cross base camp not yet arrived, the supplies at the Spanish Red Cross ERU are depleting at a rate faster than planned. Consequently, 100 ready-to-eat meals are being sent to replenish their supplies. Additional food stocks will be sourced locally.

The Jakarta delegation water and sanitation coordinator was in Banda Aceh on 19 January, and participated in an inter-agency water and sanitation coordination meeting led by UNICEF. On 18 January, the coordinator inspected a water tanks manufacturing plant and approved the dispatch of 21 x 3,000-litre tanks to the French Red Cross ERU team in Sigli.

The Danish Red Cross ERU base camp team helped to set up the operational base in Medan and assisted with logistics. This has been welcomed, as has the assistance received from a local university student who is studying water engineering and who is now volunteering for the water and sanitation coordinator to support with translation, local contacts and general tasks.

ERUs

- The Spanish Red Cross ERU (Meulaboh): The specialized water plants are now producing 40,000 litres of water for distribution. The rate of treated water distribution at Meulaboh has increased to 200,000 litres daily. Specialized water continues to be supplied to the Japanese Red Cross BHCU. The bladder for provision of specialized water for the PMI office is in place, and water supply is expected to begin tomorrow.
- The German Red Cross ERU (Teunom): The team produced 35,000 litres of water for provision to the BHCU team and the community. A distribution point was installed in the destroyed town to cater to returning people. The first distribution was held in the former city centre (beside a mosque); the acceptance was quite low, probably due to the taste of the chlorinated water. But after some education with support from the PMI, the consumption of purified drinking water in the last two days has risen above 10,000 litres. The total production of drinking water to date is 64,000 litres. After the requested hose-pipes have arrived, the total amount of purified water production will rise to approximately 72,000 litres.
- The French Red Cross ERU (Sigli and Samlanga): Some 20 3,000-litre tanks were sent to the team to be used as distribution points. The requisition of materials for latrine construction is being coordinated through the logistics team.

Constraints

The logistics bottleneck is being resolved, with good logistics planning and support. Although road access is limited and air space congested, regular contact with the team sites is being resolved now that the three sub-office coordinators are in place. Furthermore, communications with the teams in terms of both voice and data is improving with assistance from the telecommunications delegate.

Objective 5 (telecommunications): fast and reliable means of communication is secured in the areas of the relief operation.

Power failures throughout the remaining portions of Banda Aceh have been increasing in frequency and lasting for longer periods of time over the last few days. These outages disrupt internet communications and occasionally affect the wireless telephone networks.

The UN emergency telecommunications room, run by WFP, is now operational, only from daybreak until the last vehicle movements of the day have reported in. The radio room will revert to 24-hour monitoring of the UN emergency VHF channel once staff have been hired to provide continuous monitoring coverage. Agencies with VHF handsets were invited to access this channel, but only for emergency use or for inter-agency communications. Agencies were informed that this single frequency is not to be used for operational purposes. The WFP radio room also monitors HF frequencies used by the in-vehicle Conan equipment. The Federation telecommunications officer has programmed two VHF handsets for this emergency channel, with one handset in the office and one in the house.

Sri Lanka

Overview

There are 64 Federation delegates working in Sri Lanka, (including the staff of the eight ERUs). There are presently 32 PNS working in Sri Lanka, and the ICRC is providing much needed assistance to tsunami victims in the form of tracing and relief in the eastern part of the country where the ICRC has its operational mandate.

For maps and reports on the general background of the disaster in Sri Lanka please refer to <http://www.lk.undp.org/ndmc/>.

Overall Goal: Up to 40,000 families (about 200,000 people) in the south of the country receive immediate relief, shelter, health and care, and community support over the next six months.

Objective 1 (water and sanitation): Adequate sanitation and water supply provided to a selected number of temporary shelters/welfare centres, and water and sanitation systems to serve the affected population.

Progress/Achievements

Some 20,000 beneficiaries in Ampara district are being provided with adequate drinking water of up to 150,000 litres of purified water daily. A total of 2,100 wells are being cleaned by the Hambantota, Ampara and Kalutara Sri Lanka Red Cross branches with support from the Spanish and French Red Cross societies. Previous plans for well cleaning support by the Netherlands Red Cross in Matara have been altered due to changes in needs.

SLRCS branch	PNS	Wells being cleaned
Hambantota	Spanish Red Cross	600
Ampara and Kalutara	French Red Cross	1,500
Total		2,100

Impact

20,000 people receive clean drinking water through the distribution of purified water by the Federation. Thousands of people will benefit from the cleaning of 2,100 wells being conducted by the SLRCS in partnership with the Spanish and French Red Cross societies. These efforts ensure the provision of much needed drinking water to people in affected areas whose access to water is hindered by the disaster.

Constraints

Operations have progressed as planned in most aspects, although rain, damaged infrastructure and flooded roads have caused difficulties in transportation. Communication is also difficult in several of the places where ERUs are operating, slowing the flow of information from the field in some locations.

Objective 3 (immediate livelihood restoration): The minimum livelihood requirements provided for up to 40,000 families (about 200,000 people) whose houses have been destroyed and have lost their belongings.

Progress/Achievements

As of 18 January, the American Red Cross ERU has facilitated the distribution of non-food items from the Federation to 5,891 families on the southern coast of Sri Lanka.

The American Red Cross relief ERU has completed the setup of the distribution system in the south, and is now establishing a distribution system in Ampara. Two delegates are expected to arrive in Ampara on 20 January to meet with the ICRC and SLRCS branches; distribution could start as early as 25 January reaching an additional 40,000 families.

Distribution of non-food relief items facilitated by the American Red Cross ERU in Galle:

Commodity	Inventory 18 Jan	Received (approx) 17 Jan	Distributed through 17 Jan	Families assisted, 17 Jan
Water containers	7,750	15,000	7,363	3,957
Tarpaulins	845	8,380	7,535	3,768*
Large tarpaulins – 7.3x30m	140			
Kitchen sets	2,750	8,709	5,959	5,959
USAID Family Hygiene Kits (< Sphere minimum standards)	0	2,568	2,568	2,568
50% wool blankets	0	19,160	19,160	5,003
Bed sheets	0	10,780	10,780	5,003

Sleeping mats	7,925	12,625		
Body bags	5,180	5,550		
Tents – 4x4	409			
<i>*Families receive 1 or 2 items depending on the size of tarpaulin, in total 16 sq. m. per family</i>				

Total families assisted (Federation non-food relief items) 17 Jan **5,891**
Total beneficiaries (Federation non-food relief items) 17 Jan **23,527**

In addition to Federation activities, the Netherlands Red Cross has bilaterally distributed non-food relief items through the Sri Lanka Red Cross branch in Hambantota. A total of 2,898 families have received assistance. One thousand of these received sheets, mats and soap while a further 1,898 families received mosquito nets, milk powder, washing powder, candles, vegetable oil and women's underwear.

Impact

The appeal aims at providing minimum livelihood requirements for up to 40,000 families in the southern districts of the country, and as at 16 January around 15 percent of the targeted population had received Federation supplied non-food relief items.

Constraints

It has not always been possible to distribute ration packs containing all the intended items of the non-food relief. This is due to the differing times of delivery of various items. It was necessary to distribute incomplete packs on occasion due to the urgency of the needs of the affected people.

Objective 4 (health): A constant, good level of health is ensured for up to 20,000 families (about 100,000 people) through prevention and basic health care, as well as health and hygiene promotion.

Progress/Achievements

A Magen David Adom (MDA) health team has been assisting with relief efforts in the area, and is helping with tracing activities of the ICRC.

Objective 5 (psychosocial support): The resilience of the affected population and the local relief workers is enhanced through psychosocial support.



Children at the Sri Lanka Red Cross counseling centre in Nambantota where they are getting much needed psychosocial support.

Progress/Achievements

Psychosocial programmes are being established by the American and Danish Red Cross societies, the SLRCS and the Federation. The Turkish Red Crescent also has plans to participate in psychosocial programmes, sending three psychosocial experts as a part of their health initiatives in Sri Lanka. There is close co-operation between the American and Danish Red Cross societies in providing psychosocial support to the affected population.

The Danish Red Cross will concentrate on the districts of Hambantota, Ampara, Batticaloa and Trincomalee, where there are over 150,000 families affected by the disaster. The Danish Red Cross has been working in the Jaffna district for approximately one year with a psychosocial programme for people affected by the conflict in the area. The initial emergency response by the Danish Red Cross will include debriefing of all volunteers who participated in the relief efforts, training of local counsellors to provide training to volunteers and school teachers, and provision of psychological first aid to people in centres for displaced people.

The American Red Cross will establish its operations in the south of the country. Initially the team will focus on training SLRCS volunteers and staff in providing psychosocial first aid, and later also trainers of psychosocial first aid trainers. The American Red Cross plan is to initially cover four districts in the south of Sri Lanka, including Galle district where the American Red Cross relief/logistics ERU is located.

Capacity of the national society

At the beginning of the disaster the Federation provided financial support to the national society branches to cover the initial costs of responding to the disaster. The support was intended to cover recruitment of volunteers, fuel, and other urgent needs of the branches. All branches in disaster-affected areas have been able to increase their volunteer base. Included in the appeal are mobile phones, computers and VHF communication for branches that are not already fully equipped.

Training of volunteers in disaster preparedness and basic health care education, psychosocial counselling for volunteers and other psychosocial activities form a part of the SLRCS plan of action. Also included in the plan of action is organisational development in the strengthening of advocacy, branch development and leadership development.

Communications – representation, advocacy and public information

The Federation information delegates and the media department of the national society continue to provide media coverage, photographs, stories and interviews to local and international media. Important telecommunications support to the operation is being provided by the Spanish Red Cross telecommunications ERU.

South Asia Cooperation

The Federation, ICRC and the national societies of Sri Lanka and India are addressing the needs of affected populations in countries affected in South Asia (India, Sri Lanka and the Maldives). However, there has been extensive support from components of the Red Cross and Red Crescent Movement across the region. In addition to fundraising through all national societies in South Asia, there has been the following assistance provided:

Bangladesh: The Bangladesh Red Crescent has responded to a request from the SLRCS, and sent 7,800 family kits. A total of 4,000 of these were air freighted and the remainder were sent by sea. Each kit contains 14 items, including clothing, cookware, utensils, soap etc. These resources were obtained from Bangladesh disaster preparedness stocks.

The Bangladesh delegation relief delegate has been working in the Maldives as the leader of the Regional Disaster Response Team (RDRT). The Bangladesh Red Crescent director who is a disaster management expert is part of the Red Cross and Red Crescent rehabilitation assessment team in Sri Lanka.

Nepal: Four Nepal Red Cross disaster management staff in their capacity as RDRT members have been deployed since the beginning of the operation. Three have been working in Sri Lanka while the other member has been working in the Maldives. The RDRT members deployed to Sri Lanka have provided significant support to the SLRCS in running its relief department. One of the members is supporting warehouse management and also assisted the FACT team. The Nepal RDRT member in the Maldives has been involved in assessment activities with the FACT team and is currently involved in the relief operation.

Pakistan: A Pakistan Red Crescent staff member has been in the Maldives in his capacity as a RDRT member. He has played an important role in assessment and resource mobilization. He also assisted with training volunteers in Red Cross and Red Crescent principles and providing orientation about the Red Cross and Red Crescent Movement and the relief operation.

Afghanistan: The Afghanistan Federation delegation is sending one staff member in his capacity as a RDRT member to Sri Lanka to provide support in warehouse management for the relief operation.

India: The India Federation delegation is providing full support to neighbouring countries. The logistics officer is undertaking procurement for the Maldives; the IT officer is helping with the Maldives operation while the head of delegation and construction coordinator are on an assessment mission this week in Sri Lanka as part of the rehabilitation team.

South Asia Regional Delegation (SARD): The SARD information manager has been working in Sri Lanka since the first day of the operation. The SARD disaster management manager is in Sri Lanka as part of the rehabilitation assessment team. The SARD programme coordinator has visited the Maldives and Sri Lanka to help support the

operations, examine rehabilitation issues etc. SARD has also supplied the newly appointed Sri Lanka delegation human resources/administration delegate. Delegates from the Finnish, German, Spanish and American Red Cross societies based in India have also been involved in the relief operation in various countries.

Outstanding Needs

Human Resources

Recruitment of Federation delegates for Sri Lanka, Indonesia, Maldives and a delegate for the Federation office in New York continues, and 30 posts remain to be filled, as detailed below. The recruitment of head of operations for Indonesia is extremely urgent.

Place of assignment	Positions to be filled
Sri Lanka	Relief coordinator, IT delegate, logistics coordinator, organisational development delegate, recovery programme coordinator
Indonesia – Jakarta	Head of operations, logistics delegate, information delegate, Movement coordinator, recovery programme coordinator
Indonesia – Banda Aceh operations centre	Programme coordinator, administration delegate, logistics coordinator, logistics delegate, relief coordinator, relief delegate, health coordinator, water-sanitation coordinator, IT delegate, psychosocial delegate
Indonesia – Medan sub-office	Head of office, relief delegate, logistics delegate
Indonesia – Meulaboh sub-office	Head of office, water-sanitation delegate, health delegate
Maldives	Relief delegate, construction delegate, information delegate
New York	UN liaison delegate

Relief needs

The following table summarizes the major outstanding material needs in the affected countries under this Revised Preliminary Appeal. Any national societies wishing to contribute to the relief pipeline are kindly requested to contact the logistics department at the Federation secretariat in Geneva (contact details on Page 2 of this update).

Country	Major outstanding needs
Indonesia	30,620 tarpaulin sheets 37,840 kitchen sets 24,635 family tents 20 dispensary tents 60,000 baby kits 62,500 hurricane lamps 118,758 jerry cans 77,334 length of rope
Sri Lanka	73,200 jerry cans 33,055 kitchen sets 20,000 cooking stoves 22,000 mosquito nets 225,000 sleeping mats 200,000 women's underwear
India	25,000 mosquito nets, 2,000 family tents, 3,600,000 water purification tablets, 59,600 tarpaulins
Myanmar	4,140 blankets and 8,500 kitchen sets

[Contributions list below; click here to return to the title page.](#)

Asia - Earthquake and Tsunamis

ANNEX 1

APPEAL No. 28/2004

PLEDGES RECEIVED

19/01/2005

DONOR	CATEGORY	QUANTITY	UNIT	VALUE CHF	DATE	COMMENT
-------	----------	----------	------	-----------	------	---------

CASH

REQUESTED IN APPEAL CHF ----->	183,486,000	TOTAL COVERAGE 77.1%
ANDORRA, PRINCIP. - PRIVATE DONOR	3,086	12.01.05
AUSTRIA - GOVT/RC	450,000 EUR	694,350 10.01.05
AUSTRALIAN - RC	2,400,000 AUD	2,119,200 30.12.04
AUSTRALIAN - RC	7,300,000 AUD	6,445,900 31.12.04
AUSTRALIAN - GOVT	4,800,000 AUD	4,238,400 02.01.05
BAHRAIN - PRIVATE DONOR	50,000 USD	56,600 06.01.05
BELGIUM - RC/GOVT	7,186 EUR	11,088 31.12.04
BELGIUM - RC	500,000 EUR	771,500 01.01.05
BRITISH PETROLEUM FOUNDATION	1,000,000 USD	1,145,000 29.12.04
BRUNEI - PRIVATE DONORS	30,285 USD	34,282 05.01.05
BRUNEI - PRIVATE DONOR	3,600 USD	4,075 04.01.05
BULGARIA - PRIVATE DONOR	10,000 EUR	15,430 14.01.05
CAMBODIA - GOVT/RC	10,000 USD	11,320 05.01.05
CANADIAN - GOVT	3,465,000 CAD	3,336,795 31.12.04
CANADIAN - GOVT/RC	990,000 CAD	953,370 26.12.04
CANADIAN - RC	200,000 CAD	192,600 27.12.04
CANADIAN - RC	5,000,000 CAD	4,815,000 29.12.04
CANADIAN - PRIVATE DONOR	100,000 USD	113,200 06.01.05
CANADIAN - PRIVATE DONORS		570 17.01.05
CHINA - HONG KONG - RC BRANCH		3,713,771 04.01.05
CHINA - HONG KONG - RC BRANCH		3,238,470 29.12.04
CHINA - HONG KONG - RC BRANCH		1,560,515 01.01.05
CHINA - HONG KONG - RC BRANCH		2,971,017 03.01.05
CHINA - HONG KONG - RC BRANCH		441,177 07.01.05
CHINA - HONG KONG - RC BRANCH		593,246 13.01.05
CHINA - HONG KONG - PRIVATE DONORS		3,373 04.01.05
CHINA - MACAU - RC BRANCH		500,000 26.12.04
CHINA - MACAU - RC BRANCH		280,000 30.12.04
CHINA - MACAU - RC BRANCH		780,000 14.01.05
CHINA - RC	50,000 USD	56,500 31.12.04
CHINA - RC	100,000 USD	113,000 31.12.04
CHINA - RC	100,000 USD	113,000 31.12.04
CHINA - RC	20,000 USD	22,600 31.12.04
CHINA - RC	50,000 USD	56,500 31.12.04
CHINA - RC	20,000 USD	22,600 31.12.04
CHINA - RC	20,000 USD	22,600 31.12.04
CHINA - RC	300,000 USD	343,500 28.12.04
COOK ISLANDS - RC	39,380 EUR	60,764 13.01.05
COOK ISLANDS - PRIVATE DONORS	659 EUR	1,016 12.01.05
CROATIA - RC		1,500,000 30.12.04
CYPRUS - RC		26,540 11.01.05
ECHO	3,000,000 EUR	4,549,500 26.12.04
EGYPT - PRIVATE DONORS		141 14.01.05
ESTONIA - GOVT	500,000 EEK	48,100 28.12.04

Asia - Earthquake and Tsunamis

ANNEX 1

APPEAL No. 28/2004

PLEDGES RECEIVED

19/01/2005

DONOR	CATEGORY	QUANTITY	UNIT	VALUE CHF	DATE	COMMENT
FINLAND - RC		1,575,000	EUR	2,430,225	05.01.05	
FIRST DATA WESTERN UNION FOUND.		1,000,000	USD	1,130,000	31.12.04	PMN to be finalised
FRANCE - PRIVATE DONORS		2,710	EUR	4,182	04.01.05	
FRANCE - PRIVATE DONOR		10,000	USD	11,320	11.01.05	
FRANCE - PRIVATE DONORS				11,260	19.01.05	
OECD STAFF MEMBERS		10,000	EUR	15,430	05.01.05	
GERMANY - PRIVATE DONORS				17,389	30.12.04	
GREAT BRITAIN - GOVT/RC		400,000	GBP	865,600	30.12.04	INDONESIA
GREAT BRITAIN - RC		100,000	GBP	216,400	28.12.04	
GREAT BRITAIN RC				840,642	30.12.04	SRI LANKA TO PURCHASE CLOTHES, MATS, SOAPS
GREAT BRITAIN - PRIVATE DONOR		20,000	EUR	30,860	30.12.04	
GREAT BRITAIN - PRIVATE DONOR		75,000	USD	84,900	07.01.05	
GREAT BRITAIN - PRIVATE DONOR		20,000	USD	22,640	04.01.05	
HELLENIC - RC		50,000	EUR	75,825	27.12.04	
HELLENIC - RC		200,000	EUR	308,600	05.01.05	
HELLENIC - PRIVATE DONOR		100	EUR	154	03.01.05	
HELLENIC - PRIVATE DONOR				566	12.01.05	
ICELAND - GOVT		5,000,000	ISK	88,000	26.12.04	
ICELAND - RC		12,000,000	ISK	211,200	26.12.04	
IRELAND - GOVT		750,000	EUR	1,155,750	29.12.04	
IRELAND - RC		2,000,000	EUR	3,086,000	31.12.04	
IRELAND - PRIVATE DONOR		10,000	EUR	15,430	06.01.05	
ITALY - RC		288,615	EUR	444,756	29.12.04	INDIA (EUR 150'000)
ITALY - PRIVATE DONORS				309	10.01.05	
ITALY - PRIVATE DONOR		10,000	USD	11,320	18.01.05	
JAPANESE - RC		100,000,000	JPY	1,109,500	28.12.04	
JORDAN - PRIVATE DONOR				16,929	04.01.05	
KOREA, REPUBLIC OF - RC		200,000	USD	226,400	07.01.04	
KUWAIT - PRIVATE DONOR		1,683	USD	1,905	12.01.05	
LATVIA - RC		28,400	EUR	43,821	13.01.05	
LATVIA - PRIVATE DONOR		20,000	USD	22,640	03.01.05	
LEBANON - PRIVATE DONORS				1,358	13.01.05	
LEBANON - PRIVATE DONOR		10,000	USD	11,320	13.01.05	
LIBYAN - RC				25,000	06.01.05	
LIBYA - PRIVATE DONORS				566	13.01.05	
LIECHTENSTEIN - RC				20,000	29.12.04	
LITHUANIA - RC				21,460	10.01.05	
LUXEMBOURG - GOVT/RC		250,000	EUR	385,750	05.01.05	
MALAYSIA - RC		30,000	USD	34,200	30.12.04	BILATERAL FOR INDONESIA, SRI LANKA, INDIA
MALAYSIA - PRIVATE DONOR		200,000	MYR	60,500	03.01.05	
MALAYSIA - PRIVATE DONOR		2,199	USD	2,490	04.01.05	
MALAYSIA - PRIVATE DONORS				1,500	19.01.05	
MALTA - PRIVATE DONOR		5,000	EUR	5,660	12.01.05	
MAURITIUS - GOVT		50,000	USD	56,600	13.01.05	
MAURITIUS - PRIVATE DONOR		15,000	USD	16,980	14.01.05	
MONACO - RC		100,000	EUR	151,650	28.12.04	

Asia - Earthquake and Tsunamis

ANNEX 1

APPEAL No. 28/2004

PLEDGES RECEIVED

19/01/2005

DONOR	CATEGORY	QUANTITY	UNIT	VALUE CHF	DATE	COMMENT
MOROCCO - RC		250,000	MAD	36,330	29.12.04	
MOZAMBIQUE - GOVT		100,000	USD	113,200	06.01.05	
NETHERLANDS - RC		1,000,000	EUR	1,516,500	29.12.04	
NETHERLANDS - PRIVATE DONOR		160	EUR	247	05.01.05	
NETHERLANDS - PRIVATE DONOR		10,000	EUR	15,430	12.01.05	
NEW ZEALAND - GOVT		500,000	NZD	406,500	30.12.04	
NORWEGIAN - GOVT/RC		2,112,664	NOK	395,068	02.01.05	SRI LANKA
NORWAY - GOVT/RC		313,697	NOK	58,661	02.01.05	PROGRAMME SUPPORT/KIND
NORWEGIAN - PRIVATE DONORS				198	12.01.05	
OPEC FUND		1,200,000	USD	1,374,000	29.12.04	USD 600,000 INDONESIA; USD 200,000 SRI LANKA; USD 200,000 INDIA; USD 100,000 THAILAND; USD 100,000 MALDIVES
PARAGUAY - RC		5,000	USD	5,660	11.01.05	
PANAMA - PRIVATE DONORS		126	USD	143	30.12.04	
PHILIPPINES - PRIVATE DONOR		9,985	USD	11,303	03.01.05	
POLAND - PRIVATE DONOR		200	EUR	309	13.01.05	
PORTUGAL - RC		150,000	EUR	231,450	04.01.05	
PRIVATE ON LINE DONATIONS				8,700,000	19.01.05	
QATAR - PRIVATE DONORS				455	13.01.05	
ROMANIA - PRIVATE DONOR		10,000	USD	11,320	18.01.05	
SAUDI ARABIA - GOVT		500,000	USD	572,500	30.12.04	INDONESIA RC - PMN to be finalised
SAUDI ARABIA - GOVT		300,000	USD	343,500	30.12.04	SRI LANKA RC - PMN to be finalised
SAUDI ARABIA - GOVT		200,000	USD	229,000	30.12.04	THAILAND RC - PMN to be finalised
SAUDI ARABIA - GOVT		2,000,000	USD	2,290,000	30.12.04	PMN to be finalised
SAUDI ARABIA - GOVT		200,000	USD	229,000	30.12.04	MALDIVES RC - PMN to be finalised
SAUDI ARABIA - GOVT		100,000	USD	113,200	30.12.04	SOMALIA RC - PMN to be finalised
SAUDI ARABIA - GOVT		200,000	USD	229,000	30.12.04	INDIA RC - PMN to be finalised
SAUDI ARABIA - PRIVATE DONORS				2,995	13.01.05	INDONESIA
SAUDI ARABIA - PRIVATE DONORS				290	13.01.05	SRI LANKA
SINGAPORE - JAPAN TOBACCO INTERN.		30,000	USD	34,350	28.12.04	SRI LANKA, MALDIVES, INDONESIA
SINGAPORE - RC/GOV.		2,000,000	SGD	1,396,600	03.01.05	INDONESIA, SRI LANKA, INDIA, THAILAND, MALDIVES, BANGLADESH, MYANMAR
SLOVAKIA - RC		50,000	SKK	1,925	27.12.04	
SLOVENIA - RC				32,148	30.12.04	
SLOVENIA - RC				128,742	06.01.05	
SLOVENIA - GOVT				55,045	11.01.05	
SOUTH AFRICA - RC				488,250	06.01.05	
SOUTH AFRICA - RC				785,200	11.01.05	
SPAIN - RC		240,000	EUR	370,536	28.12.04	BILATERAL
SPAIN - RC		100,000	EUR	154,100	29.12.04	
SPAIN - RC		100,000	EUR	154,100	31.12.04	
SPAIN - PRIVATE DONOR		5,000	EUR	7,715	12.01.05	
SPAIN - PRIVATE DONOR		18,900	EUR	29,163	17.01.05	
SWEDEN - GOVT/RC		1,250,000	SEK	212,500	28.12.04	
SWEDEN - GOVT/RC		17,000,000	SEK	2,890,000	29.12.04	
SWEDEN - RC		120,000,000	SEK	20,520,000	11.01.05	

Asia - Earthquake and Tsunamis

ANNEX 1

APPEAL No. 28/2004

PLEDGES RECEIVED

19/01/2005

DONOR	CATEGORY	QUANTITY	UNIT	VALUE CHF	DATE	COMMENT
SWEDEN - PRIVATE DONOR		150,000	EUR	231,450	05.01.05	
SWITZERLAND- GOVT/RC				15,938	31.12.04	PROGRAMME SUPPORT/KIND
SWITZERLAND - GOVT/RC				300,000	29.12.04	INDONESIA
SWITZERLAND - PRIVATE DONORS				23,822	05.01.05	
SWITZERLAND - WHO/VERF		5,839	USD	6,700	30.12.04	
SWITZERLAND - PRIVATE DONORS				1,000	30.12.04	INDIA
SWITZERLAND - PRIVATE DONORS				2,000	30.12.04	SRI LANKA
SYRIA - PRIVATE DONOR		10,000	USD	11,320	13.01.05	
THAILAND - PRIVATE DONOR		2,485	USD	2,813	05.01.05	INDONESIA, SRI LANKA
TAIWAN RED CROSS ORGANISATION		3,000,000	USD	3,409,000	02.01.05	INDONESIA, SRI LANKA, INDIA
TERRACOTTA CORPORATION				1,000,000	04.01.05	
TUNISIA - PRIVATE DONORS				3,086	11.01.05	
TURKISH - RC		40,000	USD	45,280	04.01.05	INDIA, BANGLADESH, MYANMAR, MALAYSIA
UKRAINE - PRIVATE DONORS				1,000	05.01.05	
UNITED ARAB EMIRATES - PRIVATE DONORS		1,485	USD	1,682	30.12.04	
UNITED ARAB EMIRATES - RC		500,000	USD	572,500	28.12.04	BILATERAL FOR SRI LANKA, PURCHASE OF RELIEF ITEMS
UNITED ARAB EMIRATES - RC		610,000	USD	698,500	28.12.04	BILATERAL FOR INDONESIA, PURCHASE OF RELIEF ITEMS
UNITED ARAB EMIRATES - RC		400,000	USD	458,000	28.12.04	BILATERAL FOR INDIA, PURCHASE OF RELIEF ITEMS
UNITED ARAB EMIRATES - RC		20,000	USD	22,900	27.12.04	
UNITED ARAB EMIRATES - RC		150,000	USD	171,750	28.12.04	MALDIVES
UNITED ARAB EMIRATES - RC		120,000	USD	137,400	28.12.04	BILATERAL FOR THAILAND, PURCHASE OF RELIEF ITEMS
USA - PRIVATE DONORS		1,700	USD	1,924	29.12.04	
USA - PRIVATE DONORS		13,955	USD	15,797	28.12.04	SRI LANKA
USA - PRIVATE DONORS		100,000	USD	113,200	29.12.04	
USA - PRIVATE DONORS		5,000	USD	5,660	31.12.04	
USA - PRIVATE DONOR		50,000	USD	56,600	28.12.04	
USA - PRIVATE DONOR		25,000	USD	28,300	28.12.04	
USA - PRIVATE DONOR		25,000	USD	28,300	29.12.04	
USA - PRIVATE DONOR		25,000	USD	28,300	05.01.05	
USA - PRIVATE DONOR		10,000	USD	11,320	06.01.05	
USA - PRIVATE DONOR		25,000	USD	28,300	07.01.05	
USA - PRIVATE DONOR		10,000	USD	11,320	06.01.05	
USA - PRIVATE DONOR		10,000	USD	11,320	04.01.05	
USA - PRIVATE DONORS				101,420	17.01.05	
USAID/OFDA		4,000,000	USD	4,560,000	28.12.04	PMN to be finalised
AMERICAN - RC		5,000,000	USD	5,660,000	13.01.05	PROCUREMENT, TRANSPORT AND DISTRIBUTION OF EMERGENCY FOOD PARCELS
URUGUAY - PRIVATE DONOR		7,980	USD	9,033	14.01.05	
VIRGIN ISLANDS - PRIVATE DONOR				6,000	07.01.05	
VODAPHONE GROUP FOUNDATION		250,000	GBP	545,250	30.12.04	

Asia - Earthquake and Tsunamis

ANNEX 1

APPEAL No. 28/2004

PLEDGES RECEIVED

19/01/2005

DONOR	CATEGORY	QUANTITY	UNIT	VALUE CHF	DATE	COMMENT
SUB/TOTAL RECEIVED IN CASH				121,759,501	CHF	66.4%

KIND AND SERVICES (INCLUDING PERSONNEL)

DONOR	CATEGORY	QUANTITY	UNIT	VALUE CHF	DATE	COMMENT
AUSTRALIA RC	FACT	3	12,000	36,000	27.12.04	PMN to be finalised
BELGIUM - RC/GOVT		218,560	EUR	337,238	31.12.04	500 FAMILY TENTS, 10'600 JERRYCANS (10I), 10'200 JERRYCANS (20I) - FOR SRI LANKA
BELGIUM - RC		297,917	EUR	459,686	12.01.05	JERRYCANS, BED SHEETS, SOCCER BALLS, PLASTIC BAGS, BULBS, TORCHES, BATTERIES, ELECTRIC EQUIPMENT, GENERATORS
CANADA RC	FACT	2	12,000	24,000	27.12.04	PMN to be finalised
DENMARK RC	FACT	2	12,000	24,000	27.12.04	PMN to be finalised
DENMARK RC	ERU LOGISTICS	1		250,000	27.12.04	PMN to be finalised, value Danish RC
FINLAND RC	ERU HEALTH	1		512,000	27.12.04	PMN to be finalised, estimated value
FRANCE RC	ERU HEALTH	1		465,000	27.12.04	PMN to be finalised, estimated value
FRANCE RC	ERU WATSAN	1		465,000	30.12.04	PMN to be finalised, estimated value
FRANCE RC	FACT	2	12,000	24,000	27.12.04	PMN to be finalised
GERMANY RC	FACT	2	12,000	24,000	27.12.04	PMN to be finalised
GERMANY RC	ERU WATSAN + ERU HEALTH	1,475,000	EUR	2,275,925	30.12.04	2 ERU HEALTH & WATER EQUIPMENT + VEHICLES + TPT - DIRECT ASSISTANCE INDONESIA
GERMANY RC	ERU WATSAN	646,000	EUR	996,778	30.12.04	ERU WATER/SANITATION EQUIPMENT + VEHICLES + TPT - DIRECT ASSISTANCE SRI LANKA
GERMANY RC	HYGIENE + BAGS	89,600	EUR	138,253	02.01.05	SRI LANKA - DIRECT ASSISTANCE : HYGIENE PACKS, BODY BAGS
GERMANY - RC		170,540	EUR	263,143	03.01.05	SRI LANKA - DIRECT ASSISTANCE : JERRYCANS, KITCHEN SETS, BEDSHEETS
GREAT BRITAIN RC	FACT	2	15,756	34,364	10.01.05	FACT TEAM + EQUIPMENT, MALDIVES DIRECT ASSISTANCE
GREAT BRITAIN RC		241,039	GBP	525,706	28.12.04	ERU TEAM & EQUIPMENT SRI LANKA - DIRECT ASSISTANCE
GREAT BRITAIN RC		14,100	GBP	30,752	29.12.04	REHABILITATION TEAM + EQUIPMENT. DIRECT ASSISTANCE
GREAT BRITAIN RC		574,380	GBP	1,252,723	04.01.05	INDONESIA: VEHICLES, TARPAULINS, BLANKETS, RIBRAHS
GREAT BRITAIN RC		328,489	GBP	716,434	04.01.05	MALDIVES: GENERATORS, HYGIENE KITS, RUBHALLS, MEDICAL EQUIPMENT
IRAN RC	RELIEF ITEMS	672,000	USD	759,360	31.12.04	PMN to be finalised
JAPAN RC	FACT	1	12,000	12,000	27.12.04	PMN to be finalised
JAPAN RC	ERU HEALTH	1		512,000	27.12.04	PMN to be finalised, estimated value
KOREA REP. RC	BLANKETS	90,000	USD	102,600	28.12.04	BILATERAL
KUWAIT - RC					28.12.04	BILATERAL FOR SRI LANKA: 3500 PCES BLANKETS, 500 PCES KEROSENE LAMPS, 1000 PCES FOOD CANS, 1'095 CART. FOOD
NEW ZEALAND RC	FACT	1	12,000	12,000	27.12.04	PMN to be finalised
NORWAY RC	ERU HEALTH	1		515,000	27.12.04	PMN to be finalised, estimated value
NORWAY RC		NOK	3,330,000	623,267	30.12.04	PMN to be finalised - JERRY CANS, TENTS, RUB HALLS, BLANKETS + TPT & INSURANCES

Asia - Earthquake and Tsunamis

ANNEX 1

APPEAL No. 28/2004

PLEDGES RECEIVED

19/01/2005

DONOR	CATEGORY	QUANTITY	UNIT	VALUE CHF	DATE	COMMENT
NORWAY - GOVT/RC		7,399,801	NOK	1,383,763	02.01.05	JERRY CANS, FAMILY TENTS, RUBHALLS, BODYBAGS, TOYOTA, WATER PURIFICATION
SAUDI ARABIA		USD	2,000,000	2,264,000	30.12.04	INDONESIA VARIOUS SUPPLIES DIRECT
SAUDI ARABIA		USD	800,000	905,000	30.12.04	THAILAND VARIOUS SUPPLIES DIRECT
SAUDI ARABIA		USD	1,200,000	1,358,000	30.12.04	SRI LANKA VARIOUS SUPPLIES DIRECT
SAUDI ARABIA		USD	500,000	566,000	30.12.04	MALDIVES VARIOUS SUPPLIES DIRECT
SPAIN RC	ERU TELECOM	1		155,000	27.12.04	PMN to be finalised, estimated value
SPAIN RC	FACT	1	12,000	12,000	27.12.04	PMN to be finalised
SPAIN RC	ERU WATSAN			440,000	30.12.04	PMN to be finalised, estimated value
SWEDEN RC	ERU WATSAN	1		399,000	27.12.04	PMN to be finalised, value Swedish RC
SWITZERLAND - RC/GOVT				305,200	31.12.04	SRI LANKA - KITCHEN SETS, SHEETING, TARPULINS, LANTERNS
UNITED ARAB EMIRATES - RC		41,625	USD	47,661	28.12.04	BILATERAL FOR SRI LANKA: BLANKETS, CLOTHES
USA AMCROSS	FACT	2	12,000	24,000	27.12.04	PMN to be finalised
USA AMCROSS	ERU RELIEF	1		500,000	30.12.04	PMN to be finalised, estimated value
SUB/TOTAL RECEIVED IN KIND/SERVICES				19,750,853	CHF	10.8%

ADDITIONAL TO APPEAL BUDGET

DONOR	CATEGORY	QUANTITY	UNIT	VALUE CHF	DATE	COMMENT
AUSTRIA RC	SUPPORT TEAMS	142,103	EUR	219,265	03.01.05	
AUSTRIA RC		700,000	EUR	1,080,100	03.01.05	2 TRANSPORTS 60 MT.MEDICAL RELIEF GOODS & MEDICAMENTS
SUB/TOTAL RECEIVED				1,299,365	CHF	