

# OPERATIONS UPDATE



International Federation of Red Cross and Red Crescent Societies  
Fédération Internationale des Sociétés de la Croix-Rouge et du Croissant-Rouge  
Federación Internacional de Sociedades de la Cruz Roja y de la Media Luna Roja  
الاتحاد الدولي لجمعيات الصليب الأحمر والهلال الأحمر

## HUMANITARIAN CRISIS IN THE MIDDLE EAST

*Appeal No. MDR81001  
27 July 2006*

*The Federation's mission is to improve the lives of vulnerable people by mobilizing the power of humanity. It is the world's largest humanitarian organization and its millions of volunteers are active in 185 countries.*

### In Brief

**Operations Update no. 1; Period covered: 21 July to 27 July 2006;  
Appeal target: CHF 1,329,000 (USD 1 million or EUR 846,000).**

*([click here to go directly to the attached map of the Middle East region.](#))*

#### Appeal history:

- Launched on 21 July 2006 for CHF 1,329,000 (USD 1 million or EUR 846,000) for three months to assist 50,000 beneficiaries.
- Disaster Relief Emergency Funds (DREF) allocated: CHF 200,000 (USD 159,120 or EUR 127,455).

**Operational Summary:** The ICRC provides the overall leadership in and around the Lebanon crisis. Movement actors have different roles and responsibilities within this. This operations update is being issued to provide information on Federation and Red Cross/Red Crescent National Society support to those affected, or left vulnerable, by the crisis in the Middle East. An assessment is currently underway, and will result in a clearer plan of priority needs.

National Societies intending to support the affected National Societies are requested to work within the coordinated Movement response. In this initial phase, support should be channelled through the ICRC's Preliminary Appeal launched on 18 July 2006, and the Federation's Emergency Appeal launched on 21 July 2006. These Appeals are likely to be revised as assessments indicate further needs.

The Federation has received a number of initial pledges and offers of support for this appeal. Details of these will start to be reflected in coming Operations Updates.

The International Federation undertakes activities that are aligned with its Global Agenda, which sets out four broad goals to meet the Federation's mission to "improve the lives of vulnerable people by mobilizing the power of humanity".

#### Global Agenda Goals:

- Reduce the numbers of deaths, injuries and impact from disasters.
- Reduce the number of deaths, illnesses and impact from diseases and public health emergencies.
- Increase local community, civil society and Red Cross Red Crescent capacity to address the most urgent situations of vulnerability.
- Reduce intolerance, discrimination and social exclusion and promote respect for diversity and human dignity.

*For further information specifically related to this operation please contact:*

- *In Amman (for Syria and Jordan): Ahmed Gizo, Head of Middle East Office, phone: +962 6 56 94911, + 962 6 5694556, mobile: +962 79 5158204, [ahmedadam.gizo@ifrc.org](mailto:ahmedadam.gizo@ifrc.org)*
- *In Tunis (for Egypt): Anne Leclerc, Head of North Africa Regional Office, phone: + 216 71 86 24 85, fax: + 216 71 86 29 71, [ae.leclerc@ifrc.org](mailto:ae.leclerc@ifrc.org)*
- *In Cyprus: Tore Svenning, Federation Representative on Cyprus, phone + 35 79 99 57 106, [tore.svenning@ifrc.org](mailto:tore.svenning@ifrc.org)*
- *In Geneva:*
  - *Iain Logan, MENA Coordinating Desk, phone: +41 22 730 4889 , mobile: +41 79 249 3380, [iain.logan@ifrc.org](mailto:iain.logan@ifrc.org)*
  - *Marie Françoise Borel, Media and Communications Department, phone: + 41 22 730 4346, mobile: + 41 79 217 3345, [mf.borel@ifrc.org](mailto:mf.borel@ifrc.org)*
  - *John English, Operations Support Coordinator, phone: + 41 22 730 4527, mobile: + 41 79 251 8023, [john.english@ifrc.org](mailto:john.english@ifrc.org)*

*All International Federation assistance seeks to adhere to the [Code of Conduct for the International Red Cross and Red Crescent Movement and Non-Governmental Organizations \(NGO's\) in Disaster Relief](#) and is committed to the [Humanitarian Charter and Minimum Standards in Disaster Response \(Sphere\)](#) in delivering assistance to the most vulnerable.*

*For longer-term programmes in this or other countries or regions, please refer to the Federation's Annual Appeal. For support to or for further information concerning Federation programmes or operations in this or other countries, or for national society profiles, please also access the Federation's website at <http://www.ifrc.org>*

## Background



**A small baby in the arms of a Red Crescent volunteer in Homs, Syria.**

Since 12 July 2006, the Middle East region has been witnessing an outbreak of armed conflict that has caused fatalities, injuries and extensive damage to infrastructure in both Lebanon and Israel, deterioration of the security situation and displacement of an increasing number of people- internally and from Lebanon to neighbouring countries.

The large scale destruction of infrastructure including roads, bridges, airports, ports and fuel storage tanks, and the deteriorating security situation are impeding the ability of humanitarian actors to respond to the situation. Delivery of relief supplies and evacuation of the injured and dead are among the crucial services that have been disrupted. The general situation is uncertain. It is very difficult to predict when the violence will end, the extent of the humanitarian consequences and the impact on health.

There is a constant flow of people crossing the border from Lebanon into Syria. Syrian Arab Red Crescent (SARCS) statistics from the registration centres at various locations in the country showed that between 13 July and 23 July, around 70,000 people crossed into Syria from Lebanon, many in transit to other destinations, but some with plans to remain in Syria. From estimated figures received to date, the total number can be broken down approximately as: 30,861 people have crossed Al-Dabousiya border point; Al-Arida crossing point near Tartous 11,080, Idlib 325, Quoneitra 80, Deer Alzoor, 79, Aleppo 600, Al Hassaka 1,010, Hama 400, Damascus Urban and Rural 11,000, Homs 14,571.

The conflict in Lebanon has led to large scale evacuation of people to Cyprus. Approximately 41,000 individuals have arrived, although most have been able to travel onward within a short period of time. Press reports, claim around 30,000 of the 40,000 non-Cypriot evacuees from Lebanon have already left Cyprus. So far, the evacuees have tended to be relatively resource-rich individuals often with dual nationality from rich countries with the ability to arrange for their repatriation and, if necessary, assist them during a short stay in Cyprus. However, it is

foreseen that as time goes by, and the flow of evacuees continues, the composition will change towards people with fewer personal resources and originating from countries with perhaps less capacity to immediately assist their nationals.

Should this happen, the evacuees' need for assistance will change both qualitatively and quantitatively, and that there may well be an increased need for accommodation and food and other humanitarian assistance and for longer periods of time. The Federation is aware of this and is making plans to take care to ensure support for all those in need including the so called "stranded migrants." The Government of Cyprus is also calling for co-operation with States Members of the European Union in terms of arrangements which would allow third-country nationals to travel onwards from Cyprus and not remain on the island indefinitely.

Figures from the Government of Cyprus indicate that the rate of arrivals is slowing. Between 1,000 and 2,000 people a day, mostly in family units, are arriving, compared to the peak of 10,000 per day late last week. How the situation develops in the coming days and weeks depends first and foremost on how the situation in Lebanon evolves. Although there is uncertainty over this, there is concern that the armed conflict may continue for some time. Even if it does not, the situation for the civilian population will remain critical for the foreseeable future. This may translate into a continuing flow of evacuees to Cyprus, reinforced by reports that travel to Syria is increasingly fraught with difficulty and danger.

Magen David Adom (MDA) is on its highest level of alert with 750 ambulances and 120 Advanced Life Support vehicles are on call, an operations room established at MDA's national headquarters, and MDA managers participating in coordination meetings and monitoring the situation closely. At the time of reporting, staff and volunteers in northern Israel have treated and evacuated 635 casualties, including 28 dead and 41 severely injured. They also treated 376 more civilians who were suffering from anxiety and stress and transported 115 elderly and disabled persons from the affected area to the central part of Israel. Hot meals have been distributed to the population in the northern cities of Zefat, Kiryat Shmona and Hazor, where inhabitants have been living in shelters since hostilities started. A massive blood donation campaign was also launched collecting 5,000 additional blood units, for the emergency stockpile.

## **Red Cross and Red Crescent action**

The Movement's response is managed in accordance with the principles of the Seville Agreement and Supplementary Measures in full consultation and cooperation with National Societies of the affected countries.

A total of CHF 200,000 (USD 159,120 or EUR 127,455) was allocated from the Federation's Disaster Relief Emergency Fund (DREF) to provide immediate support for assessments in Syria, Cyprus and Egypt and to assist in responding to the needed humanitarian assistance. The Federation launched a Preliminary Appeal on 21 July for CHF 1,329,000 to assist 50,000 beneficiaries. The DREF allocation is considered as a start up for the operation and un-earmarked donor pledges made in response to the Emergency Appeal will repay DREF allocation.

The Federation, the ICRC and the affected National Societies in the region are closely coordinating at the field level in conducting needs assessments and planning and a Joint Statement on how this coordination has been structured has been issued on 28<sup>th</sup> July. At the regional level joint planning between the Federation, ICRC and the SARCS in Syria, the Lebanese Red Cross and on Cyprus for an effective use of regional resources is taking place. At the Geneva level, joint ICRC and Federation meetings continue to monitor, plan and adapt actions as the situation evolves in the field. In the process, the Federation membership is kept informed of the latest actions. The Regional Logistics Unit in Dubai has provided technical resources and coordination in logistics to the action in Syria.

Further assessments of needs are still ongoing. As was stressed in the preliminary appeal, once these have been completed, a clearer plan of priority needs and harmonized mobilisation tables of the Federation, ICRC and national societies will be issued in a revised appeal. The situation of third country nationals in Lebanon is being carefully monitored. The Federation is aware of the concern governments have for the safety of their nationals, and support for such people will be included in the Federation's coordinated plan. Psychological support is also

**Humanitarian Crisis in the Middle East; Appeal no. MDR81001; Operations Update no. 1**

seen as a developing priority. The Federation is in talks with Red Cross/Red Crescent partners experienced in this field to enhance existing programmes in the region to offer psychosocial support to evacuees.

The preliminary appeal contained several objectives for building the capacity of National Societies involved in this operation. This is an objective of all Federation operations, and as the figures and specific status of evacuees in Syria and Cyprus stabilize and the duration of likely stay are clarified the revised appeal will provide more concrete details of how it will be built into the current operation, alongside the primary goal of assisting those left vulnerable by the crisis.

**Goal: To alleviate the suffering of the affected population by supporting National Societies in the countries neighbouring Lebanon, specifically now Syria and Cyprus, in their efforts to effectively deliver assistance, including in the event of larger or wider population movements to Egypt, Jordan, and possibly Turkey and other countries. This support includes assistance to host families and potential returnee refugees (primarily in Syria) to be provided with returnee packages prior to returning to Lebanon.**

**Syrian Arab Red Crescent (SARC)**

The SARC started to respond to the emergency humanitarian situation from the first day of the conflict. The primary concern was to assist the large number of people fleeing Lebanon. Around 100 SARC volunteers from different branches are taking part in this response operation, in the areas of registration and sheltering, provision of relief items, logistical support, health services and re-establishing family links.

To date, over 17,000 people have been directly assisted by the SARC at the border crossing points and make shift reception centres in schools and public buildings. The majority are of Lebanese or dual nationality, but other nationalities have also been assisted in their onward journey to their respective countries in coordination with the International Organization for Migration (IOM) and their Embassies.

In the near future, schools will need to revert to their primary purpose, meaning that alternative accommodation must be found for these people. The question of how long displaced persons can be accommodated by relatives/friends also needs to be looked at. SARC, together with the Federation and in consultation with the ICRC, will assess the situation and make plans accordingly for a longer term solution. The Government intention and has started moving people received at schools in Homs and Aleppo to the summer youth camps, with a view to having all schools ready for the school year starting in September.

The Federation deployed the Regional DM delegate, the Regional DM officer and information officer to Syria to support SARC in its response to the crisis and conduct a preliminary assessment of the situation. They have been further supported by a special logistic delegate from the Regional Logistics Unit and a Disaster manager from the operations Support department seconded to the Middle East Task Force in Geneva. Initial assessment shows that the primary target group for SARC/Federation will be predominantly female. UNFPA have approached the Federation specifically with an offer for hygiene kits that are targeted at this group of beneficiaries. The SARCS caseload for the displacement looks to be around 1,500-2,000 per day.

Out of the DREF allocation for Syria, the Middle East Regional Office in Amman made an immediate transfer of USD 70,000 (approximately CHF 86,100) as a Working Advance to SARCS to help in the set up of the relief operation.

Qatar Red Crescent announced that they will contribute cash to enable Syria Arab Red Crescent to procure 5,000 food parcels to be distributed inside Syria in case of need. SARCS will assist Qatar RC procure 10,000 food parcels for Lebanon, with ICRC approval. Spanish Red Cross, in coordination with Federation Regional Logistics Unit have sent a cargo flight carrying relief items and two logisticians. The Danish Embassy in Damascus made a direct cash contribution of USD 100,000 to SARCS in support of their relief efforts.

The Federation Regional DM Coordinator arranged for the Saudi Red Crescent team on their way to Lebanon via Damascus to establish a field hospital in Beirut to have a facilitation meeting with the ICRC so that ICRC can facilitate their work.

## Shelter

**Objective 1: Adequate shelter facilities are maintained for the targeted population for the emergency period of three months.**

- The SARC provided shelters in cooperation and coordination with governmental institutions (Ministries of Social Affairs, Labour, Health, Education and Higher Education), and non-governmental organisations and charities located in the governorates of Damascus, Homs, Tartous, Deir Ezzor and Rural Damascus. Through this coordination, SARC managed to furnish several schools, monasteries and dormitories with beds, covers and pillows to accommodate the evacuees.
- As of 24 July 2006, a total of 5,788 people were provided with temporary shelters in 13 sites, under SARC care, mainly in schools and community centres. The majority of beneficiaries are children and women.
- Some 9,821 were taken care of by relatives, friends and the civil society organizations. Others are taken care of by the Ministry of Social Affairs and Labour.
- Beneficiary registration: The SRCS volunteers initiated a registration system of arrivals needing shelter. Arrivals/evacuees are being transported from the border points to registration points and then to shelters in Damascus, Homs, Tartous, Aleppo, Idlib and other urban centres.
- SARC is currently providing the evacuees who are staying in the 13 reception centres with food, water, health care and logistical support.

## Relief: distribution of food and basic non-food items

**Objective: Displaced persons, and host families, in countries surrounding Lebanon have access to adequate shelter, food and other appropriate emergency support services.**

- SARC is supplying the shelters with non-food items such as mattresses, blankets, pillows and medical care. This is in addition to the food items such as rice, milk, sugar, wheat flour, ready meals and tea.
- In coordination with the Federation and ICRC the SARC is providing drinking water, snacks, first aid, hygiene materials, baby powder, toys and psychological support at the border crossing points.
- ICRC agreed to provide SARC with blankets, hygiene kits, water tanks, ten mobile phones, water buckets.

## Logistical support

- In cooperation with a number of private sector institutions, SARC is providing transportation services for the arrivals from the border crossing points to the registration points and then to shelters in Damascus, Homs, Aleppo and Tartous.
- Providing logistical support for local and international relief convoys, which also entails coordinating with authorities at the borders to facilitate passage of aid convoys from neighbouring countries.
- Renting a warehouse of an approximate area of (5000 sqm) to store relief items received from various national societies and governments in the region.
- It is likely that further logistics service demands will be put on to the SARCS who are well positioned to provide additional logistics support and coordination for regional and other PNS who are providing assistance to Syria and onto Lebanon where this support will be coordinated by the ICRC and the LRCS. The Federation and the ICRC have agreed to jointly support any additional needs that such a task may bring to the society.

### Syrian Arab Red Crescent summary of items facilitated for Lebanon

	Donor	Date	No of Trucks	Items	Via
1	Kuwait Red Crescent Society			10 ton medicines	Ministry of Health
2	Kuwait Red Crescent Society	17-7-2006	11 Trucks	200 Ton wheat -20 Ton milk	Higher counsel for Relief - Lebanon
3	Kuwait Red Crescent Society	19-7-2006	12 Trucks	200 Ton Wheat – 21 Ton milk – 700 box (food items)	Higher counsel for Relief - Lebanon
4	Moroccan Government	18-7-2006	3 Airplanes	13 Ton Nido Milk-2 Ton pharmaceutical Products – 14 Ton pharmaceutical products+ 3.6 Ton powder	Higher counsel for Relief - Lebanon

				milk	
5	ICRC	17-7-2006	3 Trucks	8 Ton ( food items-hygiene kits – Kitchen Utensils )	ICRC
6	Syrian Arab Red Crescent Society	17-7-2006	2 Trucks	42 Ton food items	Higher counsel for Relief - Lebanon
7	Syrian Arab Red Crescent Society	17-7-2006		4 Ambulances (Syrian Government Donation)	Ministry of Health
8	Jordan Hashemite Charity	17-7-2006		300 Ton (tents – blankets – medicines – food items for children-food items)	Higher counsel for Relief - Lebanon
9	Iranian Red Crescent Society	18-7-2006		49.163 Ton medicines	Lebanese Red Cross
10	Egyptian Government	21-7-2006	2 Airplanes	6622 Kg medicines – 75 Tents-2000 blankets-dairy products 2293- blankets 2000	Higher counsel for Relief - Lebanon
11	Oman Government	21-7-2006	1 Airplane	40 ton ( Rice –sugar – Medicine-tents-flour)	Higher counsel for Relief - Lebanon
12	Physicians Union in Egypt Islamic Relief Committee		1 Airplane	39.600 different medical supplies	Higher counsel for Relief - Lebanon
13	Lebanese Emirates Friendship society	23-7-2006	1 Airplane	14.230 Kg( rice – jam Diapers-blankets- food cans)	Al Noor Society for health care in Lebanon
14	Turkey	23-24-7-2006	2 Trucks	Food items	
15	Islamic conference organization	23-24-7-2006	3 Trucks	Medical supplies & food items ( 59,919 kg)	Via Turkey
16	Charity Islamic society	23-7-2006		1800 Blankets	Hussein Zein Lebanese factory
17	Lebanese Emirates Friendship society	24-7-2006	1 Airplane	15168,5 Kg (biscuit, Jam, Rice oil, Tea, milk-Potato Powder)	Al Noor Society for health care in Lebanon
18	Mohammed ben Rashed Al Maktoom Charitable Organization(UAE)	24-7-2006	3 Trucks	85 food items- 600 Box( Jam –Oil) 2000 blankets – 2000 Mattresses in addition to medical supplies	Islamic scholars consortium

### Health and care

**Objective: The health situation of the targeted beneficiaries is maintained at a satisfactory level within the emergency period of three months.**

- SARC volunteers are providing health services to evacuees. First aid and primary medical check-ups for arrivals help to identify health needs and to refer those who need medical care to hospitals or health centres in the governorates of Damascus, Homs, Tartous, Aleppo and Rural Damascus.
- SARC volunteers are providing psychological support for arrivals at the borders.

### Re-establishing family links

For re-establishing family links SARC with support from the ICRC:

- Created an information centre for re-establishing family contacts.
- Provided two mobile phones at the border points to help arrivals contact their relatives in Lebanon.

### Needs of SARC

**Humanitarian Crisis in the Middle East; Appeal no. MDR81001; Operations Update no. 1**

According to a rapid assessment of the situation, SARC is in immediate need for the following relief items, for beneficiaries, or to replenish items that have already been distributed. All can be procured locally:

	<b>Item</b>	<b>Amount</b>
1.	Blankets	6000
2.	Mattresses	3000
3.	Hygiene Kits	650
4.	Toys	50 sets
5.	Water buckets	600
6.	Kitchen sets	600
7.	Small refrigerators	15
8.	Water Tanks	18
9.	RC Flags and Banners	200
10.	Uniforms for volunteers	200
11.	Car rental, 5 pick-ups and 3 micro-buses for one month	1 car, 5 pick-ups, 3 micro-buses
12.	Electricity generators	6
13.	Mobile phones	20
14.	Subscription (telecommunication)	2000USD/month
15.	First Aid kits	20
16.	Small food baskets including (water, bread, cheese, biscuits)	3000
17.	Children diapers	3000
18.	Feminine products (sanitary pads)	3000



**Distributing mattresses and blankets in Homs, Syria**

Additional needs include coverage of the expenses of the Regional Disaster Response Team including health insurance, travel expenses, accommodations and per diems.

Logistical support in terms of hired pick ups and mini buses, ambulances, is urgently needed to be donated in - kind or purchased (not leased from the Federation pool). Telecommunication equipment (installation of communication system in the branches), replenishment of First Aid items, budgetary support to cover overheads including hiring of extra staff, rental of warehouses, handling of consignments, loading/unloading, volunteers allowance is also needed. This list is not exhaustive, and will be updated after the assessment.

## Cyprus Red Cross

Cyprus Red Cross is playing its role as an auxiliary to the public authorities through its efforts to provide assistance to the evacuees at the port of entry (chiefly Larnaka) and otherwise. This work is carried out in close co-operation with Civil Defense and other representatives of the government. Activities to date include:

- 24 hour presence at Larnaka port, where evacuees are provided with water and other drinks, sandwiches, biscuits and similar to provide a little comfort during until they are able to leave the port area for the airport or overnight accommodation. Cyprus Red Cross volunteers do shifts to ensure a 24 hour presence.
- Targeted assistance to those who travel with babies or small children (practical items such as nappies and other baby/child oriented items). As an example, around 300 small children and babies arriving at Larnaka port with stomach trouble were cared for.
- Provision of wheelchairs to assist individuals with mobility problems (mostly people who are feeling ill, or more generally, elderly people exhausted after their long journeys)

## Humanitarian Crisis in the Middle East; Appeal no. MDR81001; Operations Update no. 1

- Assistance to individuals in need of transport to specialised clinics or hospitals (typically people who have chronic diseases or have recently undergone medical procedures in Lebanon, which need following up)
- Some assistance to individuals in arranging accommodation (primarily people who are unable to travel from Cyprus, and who have no resources of their own)
- Preparing for the eventuality that the evacuee flow might increase, its composition change, and the length of stay in Cyprus of each individual grows longer.
- Public fundraising campaign designed to mobilise additional resources to support the evacuees operation.

In spite of the recent lull in the number of evacuees, there is considerable concern over the possibility that the volume will increase again and the composition of the evacuee population change towards third-country nationals and Lebanese citizens fleeing the armed conflict. Conditions in Lebanon will remain difficult for some time in terms of general conditions but also in terms of continued employment, especially for third-country nationals. It appears prudent, for that reason, to plan and maintain preparedness for a continued flow of evacuees and their possible stay in Cyprus.

### Neighbouring countries

In Lebanon, in line with the Seville Agreement, ICRC is lead agency, providing resources to the **Lebanese Red Cross (LRC)**. The Federation is cooperating and coordinating with, ICRC and LRC who are continuing to assess the situation and will shortly agree a complimentary operational strategy, to ensure the Movement strategy is well-coordinated and effective in meeting beneficiary needs.

The LRC, with all its personnel, is on a high alert for the fifteenth day since the beginning of the current crisis. Hundreds of people have been displaced locations in Beirut and mountains in schools, hospitals and houses road are not safe. Full details of the Red Cross action in Lebanon can be found in the regular ICRC Updates on their website [www.icrc.org](http://www.icrc.org) and from the LRCS at [www.dm.net.lb/redcross/](http://www.dm.net.lb/redcross/)

From 7 am on 25 July to 7 am on 26 July, first aid workers rescued and evacuated 13 wounded people and sent 145 medical emergency transports and 25 medical transport and medical supplies. The total figures show 453 wounded, 84 corpses, and 2,203 emergency medical transports.

The LRC has three operating rooms, and mobile clinics have visited the locations where displaced people are sheltering. In total, 88 locations containing thousands of refugees visited by LRC, and the local committees distributed a lot of medicine and food aid to the displaced people.

The **Turkish Red Crescent** is providing support and humanitarian assistance to arrivals in Turkey from Lebanon, including those transiting the country on their way home. An estimated 1,650 foreign nationals have received a small food bag on arrival in the south east of the country, and temporary shelter is also provided.

### Water and sanitation (WatSan)

**Objective: The water and sanitation situation of the targeted population in the countries neighbouring Lebanon is maintained at a satisfactory level within the emergency period of three months.**

There have not been reports of an urgent problem in this area. A WatSan is on standby delegate and may be deployed to the region, if the assessment indicates a need.

### Federation Coordination

To ensure effective information management, regular Movement coordination meetings currently take place at the country, regional, and Geneva levels. All ICRC and Federation Operational Updates, Sitreps, Information Bulletins and Press Statements will reflect a complementary Movement response, as articulated in the Joint Statement issued by ICRC and Federation, issued today.

The International Federation has appointed a Representative on Cyprus to assist Cyprus Red Cross in developing its operational plans, channel international support for its operation and co-ordinate, as necessary, international assistance to the evacuee operation. Further human resource needs will be identified in the assessment.

**Humanitarian Crisis in the Middle East; Appeal no. MDR81001; Operations Update no. 1**

The ICRC has established an office in Cyprus to manage the flow of relief goods to Lebanon. World Food Programme (WFP), on behalf of the UN system, has established a logistics hub in Cyprus, UNHCR has a permanent presence in Cyprus and Medecins Sans Frontieres (MSF) has (at least) one representative in Cyprus. Some individual National Societies have dispatched personnel to Cyprus to support their respective governments in receiving and repatriating evacuees. So far little is known about the activities of other agencies, except that these are geared towards assistance in Lebanon, rather than to the needs in Cyprus.

The ability to process arrivals and arrange for their departure in a short period of time is the result of significant efforts on the part of the Government of the Republic of Cyprus and its agencies, supported by Cyprus Red Cross in close co-operation with representatives of the governments whose citizens have been affected.

In Syria, there has been continuous coordination with governmental institutions and regular meetings with UN Agencies (UNICEF, UNRWA- United Nations Relief and Works Agency for Palestine Refugees in the Near East, IOM, UNDP, WFP, and UNFPA- United Nations Population Fund) for information sharing and coordination of relief efforts. There are daily meetings between Federation, SARC and ICRC to coordinate the relief efforts and response actions.

**Communications – Advocacy and Public Information**

The need to provide information for the public is recognized at all levels of this operation. An information strategy has been approved, with the key element being to issue an Operations Update on developments in the Middle East, focusing on Red Cross/Red Crescent National Society activities, supported by the Federation, coordinated with the work of other actors every five days.

The Media and Public Relations Department will ensure that the media is kept informed of the latest developments in the operation, in addition to posting this information on the Federation website.

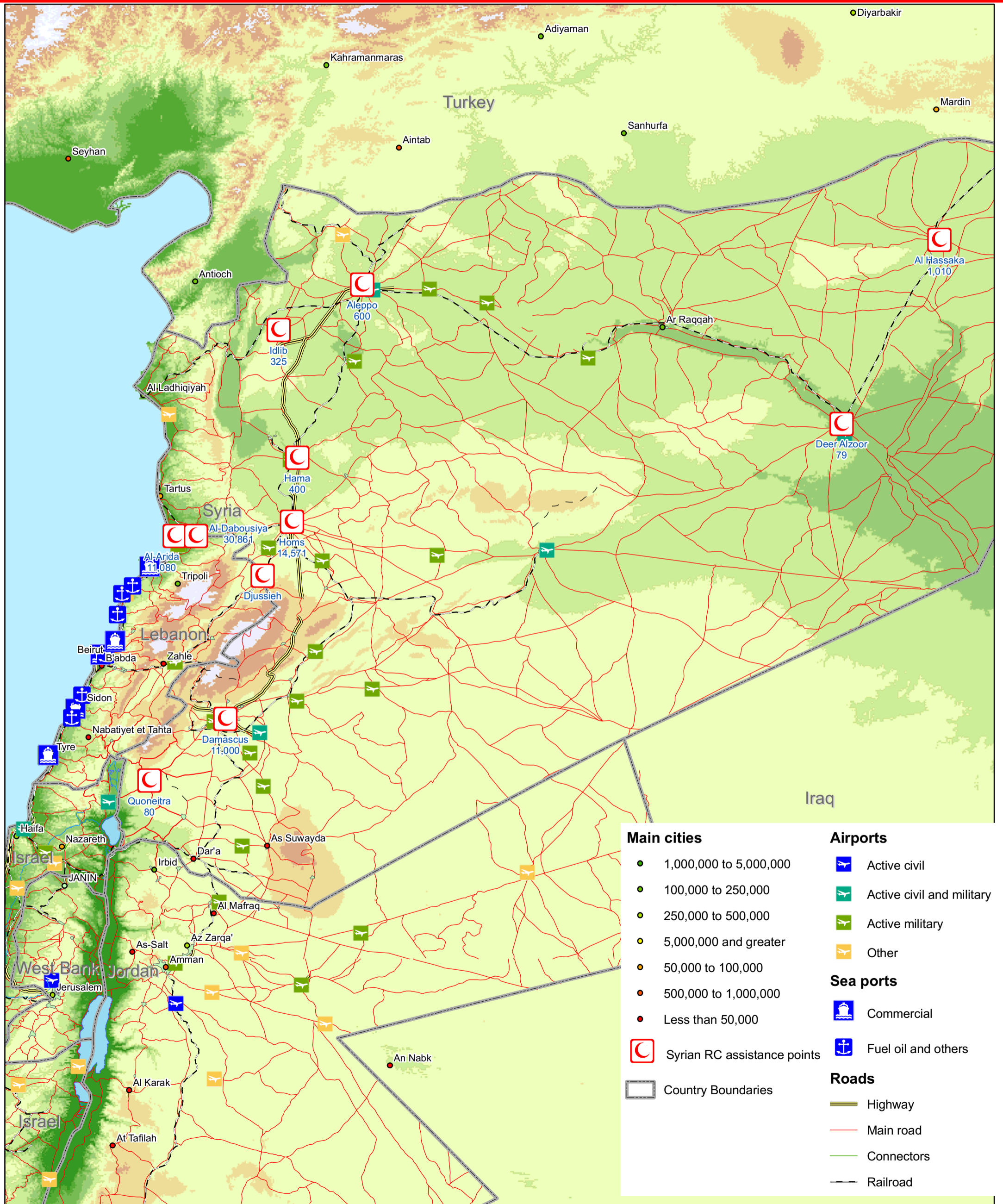
Many locations lack of essential power and bridges and roads have been destroyed. This has lead to a lack of communications, especially in north and south Lebanon.

Local and international media in Cyprus have shown considerable interest in the overall situation and also in the role and activities of Cyprus Red Cross throughout the crisis. The Federation has provided information to CNN, Cyprus Weekly and the Norwegian Broadcasting Corporation.

**[Map of Middle East region below; click here to return to the title page and contact information.](#)**



# Humanitarian crisis in the Middle East



0 25 50 100 150 200 Km

The maps used do not imply the expression of any opinion on the part of the International Federation of Red Cross and Red Crescent Societies or National Societies concerning the legal status of a territory or of its authorities.

Map data sources: ESRI, Federation, GIST, DCW