


# DREF operation

 International Federation  
of Red Cross and Red Crescent Societies

## Southern Africa: Floods

DREF operation n° MDR63001  
GLIDE n° FL-2008-000004-  
LSO/MOZ/MWI/SWZ/ZMB/ZWE  
11 January 2008

The International Federation's Disaster Relief Emergency Fund (DREF) is a source of un-earmarked money created by the Federation in 1985 to ensure that immediate financial support is available for Red Cross and Red Crescent response to emergencies. The DREF is a vital part of the International Federation's disaster response system and increases the ability of national societies to respond to disasters.

CHF 1,084,000 (USD 983,011 or EUR 664,851) has been allocated from the Federation's Disaster Relief Emergency Fund (DREF) to support the national societies in delivering immediate assistance to some 16,400 beneficiaries. Unearmarked funds to repay DREF are encouraged.

**Summary:** Following early and heavy seasonal rains in southern Africa, rivers have risen above danger levels in many places. Some areas are already flooded. These rains in the western side of the region is causing additional localised and heavy flooding in Mozambique, Zambia and Zimbabwe. Heavy rains and storms have also affected households in Lesotho, Malawi and Swaziland. According to the governments, Red Cross National Societies and other stakeholders, approximately 68,650

people have been affected and the floods have also damaged crops, livestock and infrastructure. Red Cross National Societies in affected countries, particularly Zimbabwe, Mozambique and Zambia, have initiated relief operations in support of the government efforts. The Zimbabwe Red Cross has already received Disaster Relief Emergency Funds (DREF) of CHF 107,281 on 21 December 2007 to initiate a relief operation. Damage and needs assessments are on-going in all affected countries, and it is anticipated that a preliminary regional emergency appeal will be launched. In preparation for the appeal, this DREF is being allocated to provide support to the national societies to immediately start relief operations based on needs assessments that will take place as the situation develops and evolves.

[<click here for contact details,](#)  
[or here to view the map of the affected area>](#)



Red Cross Society volunteers at a distribution point in Muzarabani, which experienced flooding since the second week of December 2007

## The situation

The heavy rainfall recorded in Southern Africa region since the first half of December 2007 and the start of 2008 has caused rivers to swell, in particular the Zambezi River which flows through Namibia, Zambia, Zimbabwe, and the Pungwe, Save and Buzi rivers in Mozambique. As a result of these rains Mozambique, Zambia and Zimbabwe have been severely affected by localized floods, while Lesotho and Swaziland are currently affected by hailstorms. The heavy rains have reportedly resulted in the deaths of 21 people and the destruction of houses, infrastructure such as bridges and crops, and livestock. Malawi is also experiencing above normal heavy rains throughout the country.

**Table 1: Number of people affected so far as of 9 January 2008**

Country	Number of Households affected	Number of people
Lesotho	400	2,000
Malawi	50	250
Mozambique	11,000	55,000
Swaziland	120	600
Zambia	160	800
Zimbabwe	1,600	8,000
<b>Total</b>	<b>13,730</b>	<b>68,650</b>

With the season still in the early stages, further heavy rains are expected. According to the weather forecast, the situation is expected to worsen and humanitarian needs will increase in all the affected countries.

**Lesotho:** During the first week of January 2008, severe storms accompanied by hailstones hit

Lesotho's Mafeteng, Quthing and Mofale's Hoek districts. An initial assessment was conducted on 6 January by the Disaster Management Authority (DMA) jointly with the Lesotho Red Cross Society. The southern part of Mafeteng was the hardest hit with 400 households (2,000 people) affected, and one death reported. Rooftops of buildings in three schools and 29 households were blown away and two children were injured by debris. It is estimated that 50% of the crops have been destroyed implying possible food crisis.

**Malawi:** Heavy rains are reported to have caused damage to crops and houses in Mzamba, Dedza, Mangochi and Chiradzulu districts with 50 houses reported destroyed in the latter. The National Disaster Management Authority jointly with the Malawi Red Cross is conducting assessments, and the detailed reports are expected soon. With the continuing heavy rains, flooding is anticipated mainly in the southern parts of the country.

**Mozambique:** The water level along the Zambezi continues to rise as a result of heavy rains in Zambia and Zimbabwe surpassing the alert level and prompting the national water authorities to increase the discharge from the Cahora Bassa Dam (see attached map) from 5,100 to 6,600 cubic metres per second. Flooding has been on the rise since the last week of December 2007.

The flooding has resulted in the destruction of houses, infrastructure and crops in six districts in the central provinces of Sofala, Tete, Zambézia and Manica, as well as the southern province of Inhambane, affecting approximately 11,000 households (55,000 people). A total of six people are reported to have died in different circumstances as a result of the flooding, while approximately 2,600 people have been evacuated to safer areas. A rapid needs assessment conducted by multi-sectoral teams indicates that the affected families are in need of immediate food, shelter, water and sanitation.

**Swaziland:** parts of the country have been affected by heavy rains accompanied by hail storms since the last week of December 2007. Approximately 120 households (600 people) in Mvutjini in southern Hhohho, Ndzingeni in the northern Hhohho, and Sthobelweni, St Phillips, and Dvokodweni in the Lubombo Region have been affected.

**Zambia:** The torrential rain raised water levels in the Magoye and Kafue Rivers, causing flooding in the southern part of the country, namely Sinazongwe, Siavonga and Mazabuka districts. The

government supported by the humanitarian community is conducting rapid assessments in the affected districts and so far records indicate that 160 households (800 people) have been affected mostly in Mazabuka. The floods are reported to have destroyed crops, thereby threatening household's food security and causing loss of livestock (cattle, goats and chickens).

Sinazongwe was reportedly temporarily cut off from the rest of the country following the destruction of a bridge. A local mine company donated kwacha 500,000 for the reconstruction of the bridge and transported displaced people by ferry to the evacuations centre. The Siavonga District was also temporarily cut off from the rest of the country when a bridge on the Lusitu River along the main access road was washed away. In addition, one of the two power pillars that supplies power to the country from the Lake Kariba North bank collapsed on 31 December 2007 causing a temporary black out.

**Zimbabwe:** Heavy rains continued throughout the country. More than 2,000 households (10,000 people) were affected in the flooded districts since the last week of December, with the majority in Muzarabani District in Mashonaland Central Province. In the Chipinge District of Manicaland Province, a flood alert was raised at the end of December 2007, when water levels in the Save River started to rise. This was followed by flash floods in the Tongogara refugee camp, Chibuwe and Chisumbanje (bordering Mozambique). In Matebeleland North Province a flood alert was raised in Tsholotsho, while in Chiredzi and Mwenezi of Masvingo Province two teams are currently in the field carrying out assessments.

## Coordination and partnerships

The Federation Zone office in Southern Africa is working very closely with the affected National Societies, relevant United Nations agencies (UNOCHA, UNICEF, WHO, FAO, IOM, UNHCR, WFP), OXFAM, government departments and other non-governmental organisations in assessments, situation monitoring and distribution of relief supplies. In addition the Federation's Zone office and country representatives and National Societies in affected countries have been participating in country coordination meetings chaired by UNOCHA.

The Federation, National Societies and some of the regional disaster and humanitarian organization have built community capacity to put in place functional early warning systems, particularly in Mozambique, and disaster management committee and functional community-based disaster management teams.

## Red Cross and Red Crescent action

To date, the Federation's Zone has provided Zimbabwe Red Cross with technical, material and financial resources support for a relief operation in Muzarabani District. The National Societies Zambia and Lesotho received financial support for the initial assessment.

A multi-disciplinary task force has been established at the Federation's Zone office and includes resident partner national societies (Danish and Norwegian Red Cross). The task force is meeting regularly for briefing and updates on the situation. Individual staff members at the Federation's Zone office have been designated as focal points for different countries. The Regional Disaster Response Team (RDRT) is on standby for deployment. To date, the affected National Societies have been coping using their national disaster response teams.

The needs identified by the National Societies in countries affected include shelter, food, mosquito nets, safe water and sanitation. The Zimbabwe Red Cross floods relief operation benefited from a previous DREF allocation of CHF107,281 targeting 1,000 families in the Muzarabani district. The National Society continues with the operation and review of the situation and outstanding needs is planned for the end of January 2008.

## The needs

Some 16,400 (3,280 household) are targeted by the national societies with this current DREF allocation. The targeted population differs from country to country depending on the needs,

absorption capacity and involvement of other humanitarian agencies. The Federation anticipates that the flooding situation will deteriorate, with humanitarian needs increasing, and the Federation expects to support the national societies with the launch of a preliminary emergency appeal shortly, covering the countries of Zambia, Malawi, Mozambique, Lesotho, Swaziland, and Zimbabwe. The affected families are in immediate need of shelter, food, clothing, clean water and sanitation.

## The proposed operation

### Relief distributions (food and basic non-food items)

**Objective: to distribute relief items to 400 households in Lesotho, 2,600 households in Mozambique, 120 households in Swaziland and 160 in Zambia.**

#### Activities planned:

- Conduct joint rapid emergency needs and capacity assessments in Lesotho, Mozambique, Swaziland and Zambia.
- Distribute tarpaulins and plastic sheeting, blankets, mosquito nets, kitchen sets, jerry cans.
- Provide technical and financial support in logistics, warehousing, and distribution and control supply movements.
- Monitor and evaluating the relief activities and providing reporting on relief distributions.

### Water, sanitation, and hygiene promotion

**Objective: To provide clean water and adequate sanitation to 400 households in Lesotho, 2,600 households in Mozambique, 120 households in Swaziland, and 160 in Zambia for three months.**

#### Activities planned:

- Distribute water purification kits to displaced households in Lesotho, Mozambique, Swaziland and Zambia.
- Distribute sanitary platforms and assisting households in constructing temporary latrines for displaced families.
- Mobilize volunteers to undertake the relief operation activities, conducting health education on the use of safe drinking water and undertaking community disaster awareness sessions.

### Capacity Building and technical support

**Objective: To build the capacity of the community and the national societies in disaster response.**

#### Activities planned:

- Provide technical support in conducting assessments, resource mobilisation, information dissemination, reporting, relief distribution and community empowerment.
- Mobilize the regional disaster response team to support the National Societies with coordination and response operation.
- Build and/or replenish National Society relief stock.

## How we work

*All International Federation assistance seeks to adhere to the [Code of Conduct for the International Red Cross and Red Crescent Movement and Non-Governmental Organizations \(NGO's\) in Disaster Relief](#) and is committed to the [Humanitarian Charter and Minimum Standards in Disaster Response \(Sphere\)](#) in delivering assistance to the most vulnerable.*

The International Federation's activities are aligned with its Global Agenda, which sets out four broad goals to meet the Federation's mission to "improve the lives of vulnerable people by mobilizing the power of humanity".

**Global Agenda Goals:**

- Reduce the numbers of deaths, injuries and impact from disasters.
- Reduce the number of deaths, illnesses and impact from diseases and public health emergencies.
- Increase local community, civil society and Red Cross Red Crescent capacity to address the most urgent situations of vulnerability.
- Reduce intolerance, discrimination and social exclusion and promote respect for diversity and human dignity.

**Contact information**

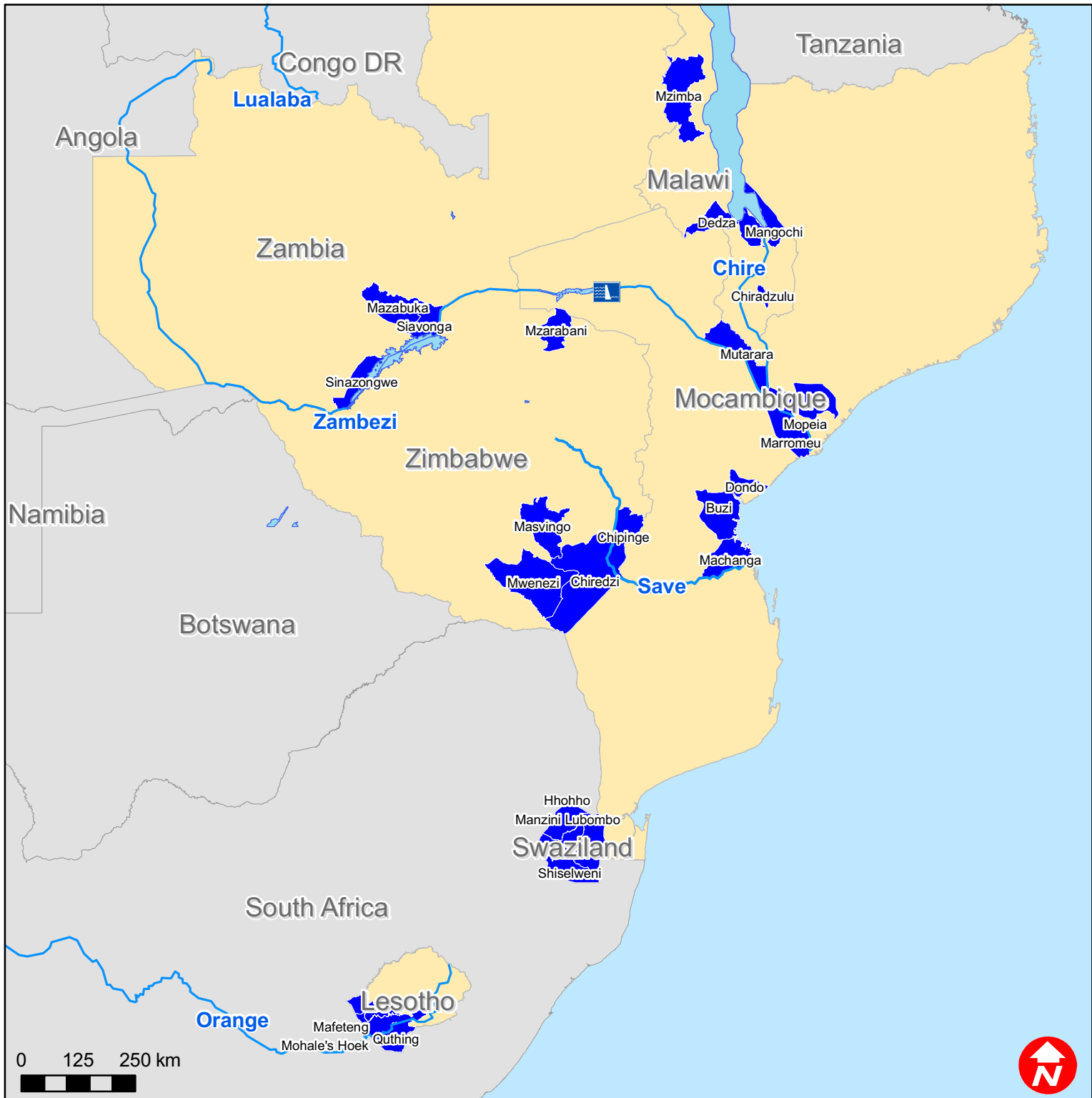
**For further information specifically related to this operation please contact:**



- **In Operational Zone for southern Africa:** Françoise Le Goff, Head of Zone Office, Harare/Johannesburg; Email [francoise.legoff@ifrc.org](mailto:francoise.legoff@ifrc.org); Phone 22.11.303.9711
- **In Geneva:** John Roche, Operations Coordinator, Phone: +41.22.730.4400; email: [john.roche@ifrc.org](mailto:john.roche@ifrc.org)

[<DREF budget \(if available\) and map below; click here to return to the title page>](#)



# Southern Africa: Floods



-  Cahora Bassa Dam
-  Affected districts

The maps used do not imply the expression of any opinion on the part of the International Federation of the Red Cross and Red Crescent Societies or National Societies concerning the legal status of a territory or of its authorities. Map data sources: ESRI, DEVINFO, Federation