

Operations update



International Federation
of Red Cross and Red Crescent Societies

Myanmar: Cyclone Nargis

Emergency appeal n° MDRMM002
GLIDE n° TC-2008-000057-MMR
Operations update n° 7
13 May 2008

Period covered by this Update: the first week since appeal was launched

Appeal target (current): CHF 6,290,909 (USD 5.9 million or EUR 3.86 million) (to be revised)

[<click here to view the attached Emergency Appeal Budget>](#)

Appeal coverage: There has been a huge and generous response to this appeal. Although the original appeal has been well covered, the scale and scope of this disaster indicates that a substantial

increase in the appeal will be necessary. The mobilisation table has now been increased. A revised appeal will be issued by the end of this week, based on updated assessments of need, and experience gained so far. The Myanmar Red Cross Society and the International Federation are working together to develop an operational plan.



Waiting for some good news: children in a temporary shelter spend day 11 in the hope that tomorrow will be better (International Federation).

[<Click here to link to the donor response list>](#)

[<click here to link to contact details >](#)

Appeal history:

- This preliminary emergency appeal was launched on 6 May 2008 for CHF 6,290,909 (USD 5.9 million or EUR 3.86 million) for six months to assist 30,000 families.

- Disaster Relief Emergency Fund (DREF): CHF 200,000 has been allocated from the Federation's DREF.

Highlights: The Myanmar Red Cross Society (MRCS) president together with the International Federation's head of country office arrived back in Yangon today (13 May) from their assessment mission to the Ayeyawady Delta area, and reported that the situation is 'overwhelming'.

The International Federation's head of country office was the first international humanitarian official permitted to leave Yangon with government approval to visit the disaster zone. 'The town of Labutta is unrecognizable. I have been here before and now with the extent of the damage and the crowds of displaced people, it's a different place,' she said.

She said the most urgent needs were for shelter, clean water and first aid materials. The findings of her visit will be one of the inputs into the ongoing revised appeal planning process.

'People who have come here having lost their homes in rural areas have volunteered to work as first aiders. They are humanitarian heroes ... four or five volunteers are giving basic first aid to 200 people a day, and they don't even have homes to go back to when they finish.'



Shouldering the load: Red Cross volunteers carry the burden of expectation in an often grim landscape (International Federation).

In terms of first aid materials: 'The more people who can be treated for their injuries before infections set in the easier it will be for the hospitals to cope.' In this respect the disease/illness **prevention** aspect of first aid needs to be recognized, not simply the curative element.

It was confirmed that the first shipment of International Federation tarpaulin had reached the town of Myaungmya; this has been used to cover the roof of the town's hospital - almost completely blown off during cyclone Nargis.

Shelter is a key issue in all five locations visited by the International Federation's head of country office. In one location 10,000 homeless people were exposed to the pouring rain.

In Labutta the head of country witnessed the dedication of local Red Cross volunteers: 'One woman was in urgent need of a blood transfusion. The volunteers got on their bikes and went out to get

blood; within five minutes they had donors back in the hospital and a life was saved.'

One key lesson from the 2004 tsunami operation was the importance of psychosocial support as an integral part of the response/recovery operation as well as also being a fundamental aspect of management of Red Cross Red Crescent volunteers putting their heart and soul into supporting people in desperate need. The above reportage indicates the extent of that likely support to both communities in the delta and Red Cross volunteers and staff supporting them.

MRCS has had capacity in psychosocial support programmes (PSP) for some time, with volunteers trained in partnership with the University of Yangon. There are PSP materials, including the PSP manual, which has been translated into Burmese. This will be built upon in the revised appeal, and will acknowledge the importance of PSP in the response to this disaster. In addition, a PSP support structure (admittedly informal at this stage) is in place to provide help to any staff or volunteers who need it.

Official government casualty figures have increased: 29,000-plus dead, 42,000 missing, about 1.5 million affected. Unofficial estimates have been as high as 150,000 people killed.

Many partner national societies have already made contributions to the appeal: American Red Cross, American government, Australian Red Cross, Austrian Red Cross, Belarusian Red Cross, Belgian Red Cross/Belgian government, British Red Cross, Canadian Red Cross, Red Cross Society of China - Hong Kong branch and Macau branch, Danish Red Cross/Danish government, Finnish Red Cross/ Finnish government, French Red Cross, Hellenic Red Cross, Icelandic Red Cross, Irish Red Cross. Japanese Red Cross, Korean Red Cross, Luxemburg Red Cross/Luxemburg government, Netherlands Red Cross, New Zealand Red Cross, Norwegian Red Cross/Norwegian government, Qatar Red Crescent, Singapore Red Cross, Slovak Red Cross, Spanish Red Cross/Spanish government, Swedish Red Cross/Swedish government, Swiss Red Cross, Taiwan Red Cross Organization, United Arab Emirates Red Crescent and Vietnam Red Cross Society. Contributions have also been received from ECHO, the Italian and Estonian governments and Total Oil Company. The International Federation, on behalf of Myanmar Red Cross Society, would like to thank all partners for their very quick and generous response to this appeal.

The situation

The critical needs are: safe drinking water, emergency shelter, hygiene items and food. There is a serious threat of health problems and communicable diseases.

The weather forecast is mixed; initial predictions of bad weather this week have softened but UNOCHA warns this is still a possibility.

Red Cross Red Crescent action

Operation overview

The Yangon-based team is prioritizing operation areas based on impact maps and increasingly detailed assessments. This will contribute to the appeal revision this week.

Aid continues to arrive in Yangon airport. Between Sunday and today five Red Cross Red Crescent flights bringing 25 tonnes of shelter materials and mosquito nets will have been processed. MRCS has begun distributing rice in Yangon; more has been sent to the delta area by road. Family kits for 10,000 people, comprising tarpaulins, pots, mosquito nets, water purification tablets and soap left today (13 May) from locations in Yangon and the delta.

A permanent inter-agency air bridge is being established by WFP with one cargo plane doing two rotations Bangkok-Yangon per day. Cargo air lift is free for the time being. WFP's logistics support will

extend across the range to boats, trucks etc. The establishment of a staging post from Bangkok's Don Muang (the old passenger terminal) airport is a part of this. The air bridge into Yangon is now seeing planes arrive from more diverse locations, with six aid flights in from Phnom Penh yesterday (12 May).



Overwhelming needs and pride: the international Federation's head of delegation was the first international humanitarian official to visit the Ayeyarwady delta. On her return today she spoke of the 'overwhelming needs' of hundreds of thousands of people as well as labelling MRCS volunteers 'humanitarian heroes' for the excellent work they are doing in such circumstances (International Federation).

Apart from water, shelter and first aid materials the International Federation needs temporary warehouses set up to handle all the aid that is beginning to arrive in the affected regions. Roofs have blown off existing warehouses so rubble halls need to be set up to take in any heavy equipment.

MRCS is stretched to the limits and demands being placed on it are likely to increase. Volunteers have been working non-stop and additional ones are being mobilized. This situation will continue to be carefully managed and monitored. As was communicated initially, the International Federation is committed to two things during this evolving international support plan: first, meeting as many needs as is possible in the most effective way; and second, ensuring MRCS is 'protected' during the operation and indeed enhanced for future humanitarian work.

Health

MRCS/International Federation visited 18 temporary shelters in two townships of Yangon with a total of 1,928 people. Sanitary facilities are inadequate. WHO has started health surveillance in affected areas with the Department of Health, which presented a list of essentials in short supply.

MRCS volunteers are being active in hospitals, health centres and communities on prevention education, distribution of water purifying tablets and first aid. MRCS/International Federation is producing health information from the field reports of volunteers.

Community disease surveillance and prevention activities will be intensified as an important role of Red Cross volunteers. The use of community first aid posts is being considered as staging posts to provide extended community health care and education support together with local health workers. This will include hygiene promotion. The first aid posts could work in partnership with the Ministry of Health and focus on health and hygiene promotion related to emerging priority issues such as for example:

- water borne diseases; dehydration/re-hydration related to diarrhoea and distribution of oral rehydration salts;
- nutritional advice including breastfeeding;
- cleaning and dressing of wounds;
- identification and reference (if possible) of high risk pregnant women;
- malaria and dengue prevention;
- support for vaccination campaigns

Shelter cluster

The International Federation confirmed its agreement over being lead on the shelter cluster, with initial support from UNHCR, until the International Federation has enough capacity in-country. Three cluster meetings have taken place in Myanmar, and the fourth was scheduled for today (13 May). Issues around assessments at township level were being addressed. UNHCR would be providing information. It was intended to reach an agreement by cluster members on a minimum standard shelter kit. Other operational and logistics issues would also be addressed. The International Federation invited colleagues not working on shelter (in particular other technical experts) to also attend the meetings. The International Federation reported a shortage of plastic sheeting, especially in Yangon.

In the regional meeting, the head of OCHA in Asia Pacific welcomed the International Federation's lead, which would benefit from its significant experience in this area. A specialist from the International Federation secretariat's shelter department has arrived in Bangkok, en route to Myanmar (pending visa); in the meantime he has considerably strengthened the International Federation's regional role in this regard.

The International Federation

In terms of FACT/RDRT:

- Sectoral specialists are currently developing plans of action in their respective fields. The lack of information and ability to communicate with colleagues in Yangon is hampering progress, but team members are continuing assessment methodologies in these special circumstances by capturing data from reliable external sources.
- The MRCS President and the head of the International Federation's Myanmar country office returned from a 3-day assessment mission, where they visited 18 temporary shelters, where 1,928 people are residing. However, further assessments are required and it is expected that these will be strengthened over the coming weeks. A key part of early response will be to seek feedback from affected communities on the appropriateness of relief items being provided, to ensure quality relief provision.
- The International Federation is coordinating its sectoral planning with that of external actors, through the interagency cluster mechanisms, and will likely engage or draw from inter agency assessments.
- The team is developing plans in relief, shelter, health, water and sanitation and psychosocial support, with support from logistics. The current logistics capacity will need to be ramped up in order to support the sectoral plans of action. The possibility of procuring relief supplies locally and of transporting goods through new routes and methods is being looked into.
- A recovery plan will be developed at the earliest, to review appeal objectives and to present a coherent framework for the relief to recovery transition and the vision for addressing medium to longer term recovery needs.



Moving forward: a regular air bridge is now established into Yangon airport and relief is reaching people in the delta, the area of most need, but much more needs to get through (International Federation).

International logistics

- A commercial flight and a chartered flight departed the Kuala Lumpur International Airport (KLIA) for Yangon today (13 May), carrying shelter kits, jerry cans, tarpaulins and mosquito nets.
- It was confirmed that the expected arrival date for the Emergency Response Unit logistics equipment in Yangon through the chartered IL76 flight is Thursday, 15 May.
- The logistics delegate in Myanmar is working with the MRCS and available but limited resources, to implement a systematic process for receiving, customs clearance, warehousing and transportation of relief items.
- Communication with the logistics counterparts in Yangon remains challenging, and obtaining confirmation for acceptance of in kind donations not on the mobilisation table or outside the International Federation's specifications is a challenge.

Communications

In Kuala Lumpur, a producer from Associated Press Television News (APTN) Jakarta, filmed the loading and take off of the first 18-tonne chartered flight to depart from the Kuala Lumpur International Airport (KLIA) for Yangon. The aircraft, which carried shelter kits, tarpaulins and kitchen sets, departed at noon. Later in the day, a photographer from Associated Press - a newspaper agency and the sister organisation of APTN - photographed loading activity at the International Federation's Asia Pacific zone regional warehouse in Port Klang. Relief supplies consisting of eight tonnes of tarpaulins and mosquito nets were loaded for transportation to KLIA, for a commercial flight scheduled to depart for Yangon tomorrow, May 14. Both AP and APTN news reports are provided to hundreds of newspaper organisations and broadcasters in major cities throughout the world.

How we work

All International Federation assistance seeks to adhere to the Code of Conduct for the International Red Cross and Red Crescent Movement and Non-Governmental Organizations (NGOs) in Disaster Relief and is committed to the Humanitarian Charter and Minimum Standards in Disaster Response (Sphere) in delivering assistance to the most vulnerable.

The International Federation's activities are aligned with its Global Agenda, which sets out four broad goals to meet the Federation's mission to "improve the lives of vulnerable people by mobilizing the power of humanity".

Global Agenda Goals:

- Reduce the numbers of deaths, injuries and impact from disasters.
- Reduce the number of deaths, illnesses and impact from diseases and public health emergencies.
- Increase local community, civil society and Red Cross Red Crescent capacity to address the most urgent situations of vulnerability.
- Reduce intolerance, discrimination and social exclusion and promote respect for diversity and human dignity.

Contact information

- Federation regional office in Bangkok: Alan Bradbury, acting head of regional office, phone: +66 2661 8201, fax: +66.2.661.9322; email: alan.bradbury@ifrc.org
- Federation zone office in Kuala Lumpur:
 - Jagan Chapagain, deputy head of zone office, phone: +6012 2153765, email: jagan.chapagain@ifrc.org
 - Amy Gaver, acting head of disaster management unit, phone: + 60 3 2161 0892, fax: +60 3 2161 1210, mobile +60 12 220 1174, email: amy.gaver@ifrc.org
 - For pledges of funding: Penny Elghady, resource mobilization and PMER coordinator, phone: +603 9207 5775, email: penny.elghady@ifrc.org
 - For mobilization of relief items: Jeremy Francis, regional logistics coordinator, phone: +60 12 298 9752, fax: +60 3 2168 8573, email: jeremy.francis@ifrc.org
 - For media / communications: John Sparrow communications coordinator, phone: +60 12 230 8543, email: john.sparrow@ifrc.org
- Federation secretariat in Geneva: Christine South, operations coordinator Asia Pacific, phone: +41 22 730 4529; mobile: +41 79 308 9824; email: christine.south@ifrc.org

[<click here to return to the title page>](#)

PRELIMINARY APPEAL BUDGET SUMMARY

Myanmar:Tropical Cyclone

MDRMM002

ORIGINAL

RELIEF NEEDS

Shelter	1,800,000
Clothing & Textiles	150,000
Utensils & Tools	1,200,000
Other Supplies & Services	1,200,000
Total Relief Needs	4,350,000

CAPITAL EQUIPMENT

Vehicles Purchase	280,000
Computers & Telecom Equipment	10,000

TRANSPORT, STORAGE & VEHICLES

Storage - Warehouse	50,000
Distribution & Monitoring	100,000
Transport & Vehicles Costs	500,000

PERSONNEL

International Staff	372,000
Regionally Deployed Staff	30,000
National Staff	50,000
National Society Staff	50,000

GENERAL EXPENSES

Travel	30,000
Office /Admin	30,000
Communication Costs	30,000

PROGRAMME SUPPORT

Programme Support - PSR (6.5% of total)	408,909
---	---------

Total Operational Needs	1,940,909
--------------------------------	------------------

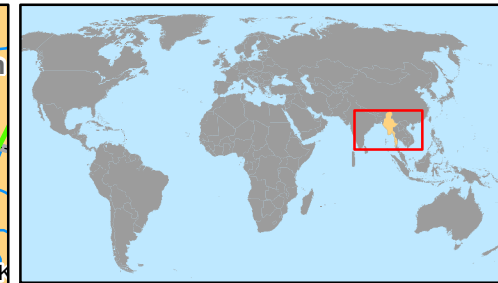
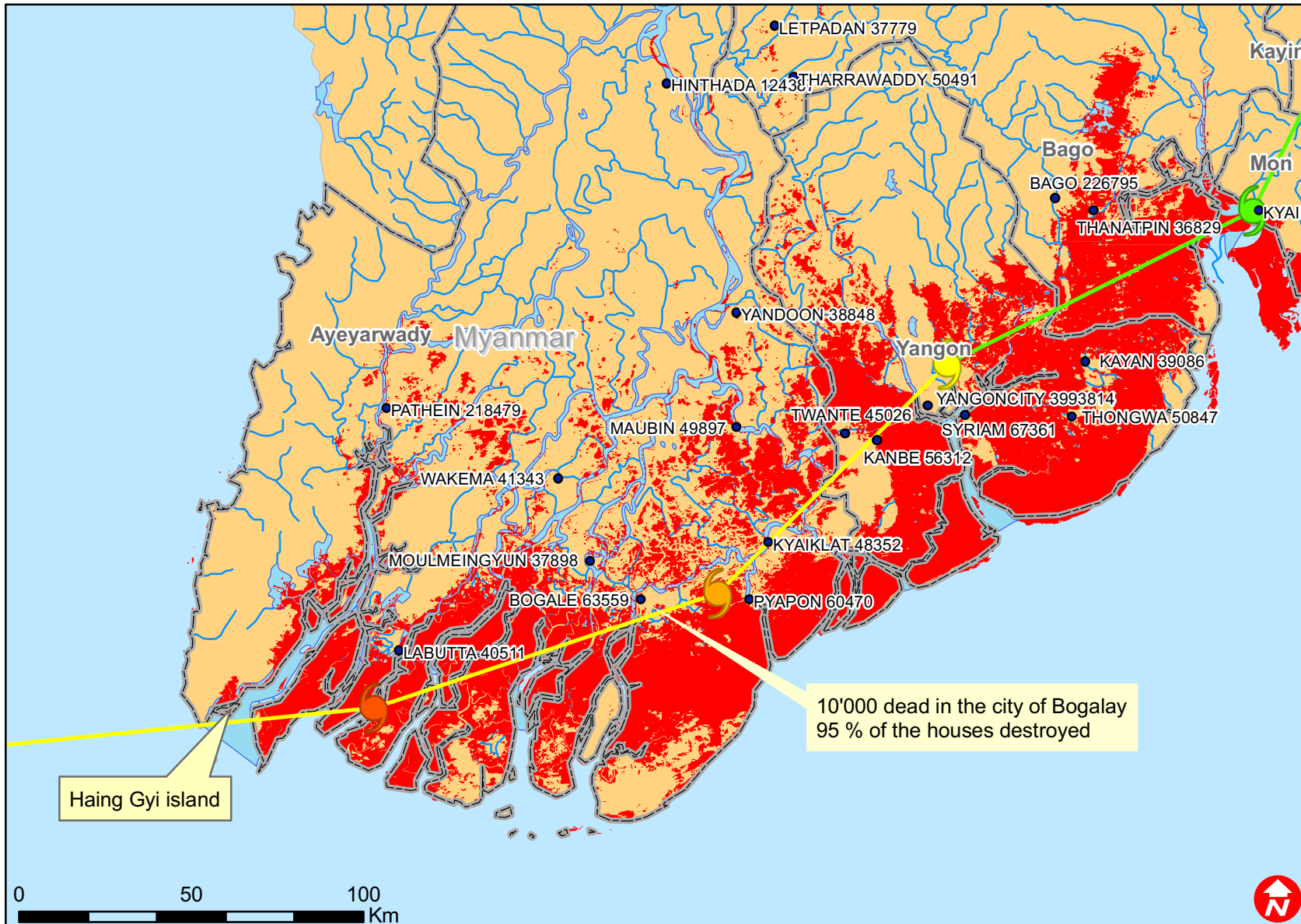
Total Appeal Budget (Cash & Kind)	6,290,909
--	------------------

Less Available Resources

Net Request	6,290,909
--------------------	------------------



Myanmar: Tropical cyclone



- Main cities with population
- ☄ CYCLONE-1
- ☄ CYCLONE-2
- ☄ CYCLONE-3
- ☄ CYCLONE-4
- ☄ TROPICAL DEPRESSION
- ☄ TROPICAL STORM
- ▭ Provinces
- Inundated extend (MODIS derived)