

# DREF operation

 International Federation  
of Red Cross and Red Crescent Societies

## Yemen: Flash Floods

**DREF operation n° MDRYE002  
GLIDE n° FL-2008-000201-YEM  
29 October 2008**

The International Federation's Disaster Relief Emergency Fund (DREF) is a source of un-earmarked money created by the International Federation in 1985 to ensure that immediate financial support is available for Red Cross and Red Crescent response to emergencies. The DREF is a vital part of the International Federation's disaster response system and increases the ability of National Societies to respond to disasters.

**CHF 219,800 (USD 191,870 or EUR 149,985) has been allocated from the International Federation's Disaster Relief Emergency Fund (DREF) to support the Yemen Red Crescent Society (Yemen RC) in delivering immediate assistance to some 1,750 beneficiaries. Unearmarked funds to repay DREF are encouraged.**

**Summary:** The operation is planned to enable the Yemen RC to ensure initial humanitarian response to the most vulnerable among the flood victims in Hadramaut. The DREF support will focus on distribution of basic food and non-food relief items including tents, blankets, mattresses, kitchen sets; as well as some aspects of health including psycho-social support. In view of the scale of the disaster and the mid and long-term humanitarian needs, an Emergency Appeal for this operation is possible to follow.



**Floods destroyed houses in the Hadramaut governorate in south eastern Yemen**

This operation is expected to be implemented over three months, and will therefore be completed by the end of January 2009; a Final Report will be made available three months after the end of the operation (by May 2009).

[<click here for the DREF budget,  
here for contact details,  
or here to view the map of the affected area>](#)

## The situation

On 24 October, heavy rains that had continued for the last three days in south eastern and south western Yemen resulted in flash floods throughout Hadramaut (consisting of about 30 districts) and Maharah governorates. The capital of Hadramaut - Mukalla city which is located by the sea shore - and a main valley was mostly affected. The floods in these two governorates resulted in the death of more than 50 people and up to 20,000 are estimated to be displaced. The death toll is expected to rise as many are reportedly missing. There are also fears that most of the missing people may be buried under their houses built from mud bricks and demolished by the floods.

In Hadramaut alone, about 500 houses were totally destroyed in the districts of Tarim, Sah, Shibam, Qatun and Wadi Al-Yeme. Roads, communication facilities, power and water distribution networks were disrupted as well. About 60 per cent of the electricity has been cut off in Hadramaut. As a result, it was not possible for the Yemen RC and other aid organizations to reach the victims immediately. The government declared the governorate a disaster area and responded fast to rescue the victims. Army helicopters were deployed to the area to rescue thousands of people, but wind and high level of water hampered rescue efforts.

## Coordination and partnerships

The Yemen RC is working as a member of the National Emergency Task Force established by the government to monitor the situation and coordinate the response. The task force consists of different ministries.

In addition, the secretary general of the National Society convenes operational emergency meetings every day with different partners working with the Yemen RC including the International Federation, International Committee of the Red Cross (ICRC), Danish Red Cross, French Red Cross, and United Arab Emirates Red Crescent. Representatives from Medecins Sans Frontieres (MSF) and United Nations Children's Fund (UNICEF) also participated in some of the meetings. The secretary general updates participants about the situation based on the information received from the branches in the field and the task force meetings. It was agreed that the Yemen RC, together with the International Federation, should take the lead to assess the situation and coordinate the necessary response.

## Red Cross and Red Crescent action

Yemen RC has opened a 24 hour operation room at the headquarters to follow up and coordinate the feedback. Supported by the International Federation and the French RC, which also has a country office in Yemen, the National Society has deployed a rapid assessment team to assist the branches and support needed for the victims. 10 volunteers from Sana'a branch have been deployed and the National Society has sent an alert to all the branches requesting them to put the trained national intervention team (NIT) members on stand by for eventual deployment to the disaster sites. Volunteers who benefited from the vulnerability and capacity assessment (VCA) training supported through various channels (ECHO and DfID) are assisting in the operation and more volunteers are planned to be deployed in the days to come.

On 26 October, the assessment team reached Alkatan district which is located about 60 km from the main city Sayeoun, where the Yemen RC governorate branch is located. The team visited the village of Alfadhah AlSharqi located by the stream of floods (Wadi or Salah) with an estimated population of about 1,000 people. According to the information from the team, all of the houses in the village were destroyed by the floods. About 97 families (with an average family size of 6-7) are homeless and living in mosques, schools or with relatives in a nearby village. The local people have lost all kinds of livelihood including cattle, camels, goats and all farms were submerged by water.

To complement the branch level efforts, the Yemen RC has finalized the preparation to mobilise non-food emergency assistance from its central warehouse in Sana'a when the specific needs are determined. The assistance consists of tents, mattresses, blankets, and kitchen sets. The National Society is also discussing with its partners the need for water and sanitation facilities as well as basic medicaments. The United Arab Emirates RC, through its country office in Yemen, has pledged to send 35 tonnes of relief items and 80,000 US\$ dollars to assist the victims. The Danish RC has expressed its willingness to provide support as required as well. The Yemen RC is emphasising the need for greater coordination especially within the members of the Movement to avoid duplication of efforts. The National Society is working to establish a more comprehensive plan of action as more information is made available through the on-going assessments. The implementation of the DREF support will also be based on coordination of efforts and inputs through other partners, especially from the Red Cross/Red Crescent Movement.

The National Society branches are coordinating their efforts with local authorities and other non-governmental organisations (NGOs) working in the area. The assessment team deployed by the Yemen RC from the headquarters has provided technical assistance to the local authorities in terms of organization of relief including camp management. As most of the roads were damaged by the floods, the Ministry of Interior is facilitating access to the disaster sites through actively working on road maintenance in the affected areas.

## The needs

**Beneficiary selection:** The operation will focus on the most vulnerable of the affected population including women, children, marginalized people (Aghdam) and refugees from other countries who had been living in the different parts of the governorate

## The proposed operation

The operation will focus on distribution of basic food and non-food relief items as well as psycho-social support services.

### Relief distributions (food and basic non-food items)

**Objective:** Yemen RC ensured timely response based on the priority needs of the beneficiaries and provided basic food and non-food items according to the results of the initial assessment conducted by the National Society.

#### Activities planned

- Assess further capacities and needs
- Purchase food and non-food items
- Conduct transportation, warehousing and logistics
- Conduct distribution, monitoring and reporting
- Coordinate with communities and other relevant organizations
- Conduct evaluation and decide on next steps

### Psycho-social services

**Objective:** Psycho-social support and counselling services are provided to the beneficiaries as required.

#### Activities planned:

- Organise refresher training for volunteers trained in psychological support services
- Train selected members from the beneficiaries on how to help others in terms of psycho-social services.
- Conduct monitoring and evaluation

## How we work

*All International Federation assistance seeks to adhere to the [Code of Conduct for the International Red Cross and Red Crescent Movement and Non-Governmental Organizations \(NGO's\) in Disaster Relief](#) and is committed to the [Humanitarian Charter and Minimum Standards in Disaster Response \(Sphere\)](#) in delivering assistance to the most vulnerable.*

The International Federation's activities are aligned with its Global Agenda, which sets out four broad goals to meet the Federation's mission to "improve the lives of vulnerable people by mobilizing the power of humanity".

#### Global Agenda Goals:

- Reduce the numbers of deaths, injuries and impact from disasters.
- Reduce the number of deaths, illnesses and impact from diseases and public health emergencies.
- Increase local community, civil society and Red Cross Red Crescent capacity to address the most urgent situations of vulnerability.
- Reduce intolerance, discrimination and social exclusion and promote respect for diversity and human dignity.

## Contact information

**For further information specifically related to this operation please contact:**

- In Yemen: Abbas Zabarah, Secretary General, Yemen Red Crescent, Sana'a; email: [abbaszabarah@yahoo.com](mailto:abbaszabarah@yahoo.com); phone: +967 1298615; and fax: +967 1283131.
- In Yemen: Mr. Tenna Mengistu; Country Representative, Yemen Representation, Sana'a; e-mail: [tenna.mengistu@ifrc.org](mailto:tenna.mengistu@ifrc.org); phone: +967 71196006; and fax: +967 1481871.
- In MENA Zone: Mr. Eduard Tschan, Deputy Head of Zone Office; email: [eduard.tschan@ifrc.org](mailto:eduard.tschan@ifrc.org); phone: +962 79 504 29 22; and fax: +962 6 569 45 56.
- In Geneva: Pablo Medina, Operations Coordinator, Operations Coordination Team; phone: +41 22 730 4381; fax: +41 22 730 0395; email: [pablo.medina@ifrc.org](mailto:pablo.medina@ifrc.org)

[<DREF budget and map below: click here to return to the title page>](#)

## **DREF OPERATION BUDGET SUMMARY**

Annex I

Yemen - Flash Floods

MDRYE002

BUDGET CHF

### **RELIEF NEEDS**

500	Shelter	35,000
505	Construction Materials	
510	Clothing & Textiles	55,038
520	Food	39,989
523	Seeds & Plants	
530	Water & Sanitation	
540	Medical & First Aid	
550	Teaching Materials	
560	Utensils & Tools	8,750
570	Other Supplies & Services	
<b>Total Relief Needs</b>		<b>138,777</b>

### **CAPITAL EQUIPMENT**

580	Land & Buildings	
581	Vehicles Purchase	
582	Computers & Telecom Equipment	1,350
584	Office/Household Furniture & Equip.	
587	Medical Equipment	
589	Other Machinery & Equipment	

### **TRANSPORT, STORAGE & VEHICLES**

590	Storage - Warehouse	3,600
592	Distribution & Monitoring	
593	Transport & Vehicles Costs	11,400

### **PERSONNEL**

600	International Staff	
640	Regionally Deployed Staff	
661	National Staff	
662	National Society Staff	24,159
670	Consultants	

### **WORKSHOPS & TRAINING**

680	Workshops & Training	16,000
-----	----------------------	--------

### **GENERAL EXPENSES**

700	Travel	2,000
710	Information & Public Relations	5,525
730	Office running costs	1,802
740	Communication Costs	900
750	Professional Fees	
760	Financial Charges	
790	Other General Expenses	

### **SERVICE FEES**

Service Fees

### **PROGRAMME SUPPORT**

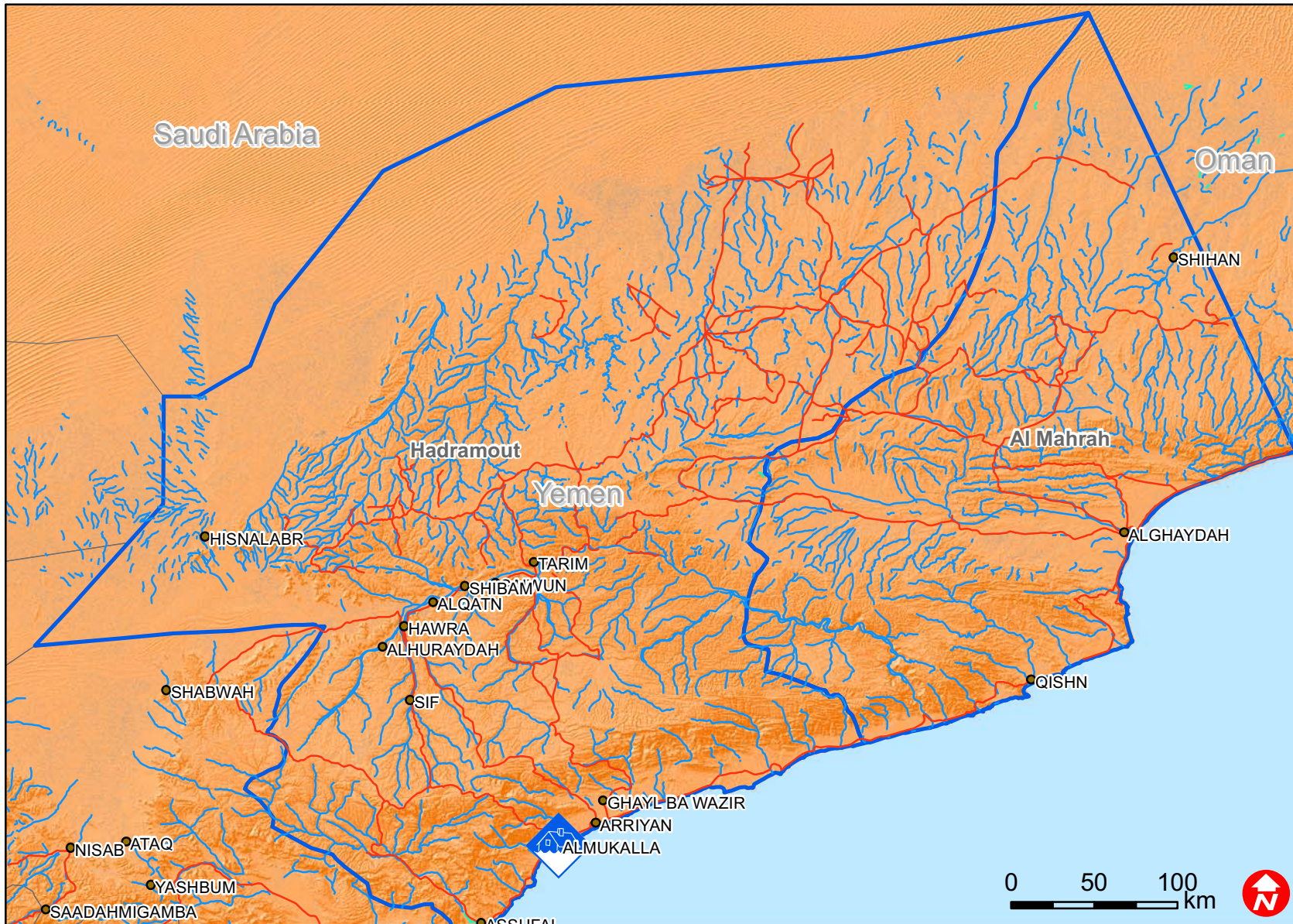
599	Programme Support - PSR	14,287
-----	-------------------------	--------





**Total Operational Needs 81,023**

**DREF ALLOCATION 219,800**



# Yemen: Flash floods



-  Heavy rain and floods in Mukalla
-  Most affected governorates
-  Main rivers
-  Main roads

