

DREF operation



International Federation
of Red Cross and Red Crescent Societies

Benin: Severe storms

DREF operation n° MDRBJ005
GLIDE n° ST-2009-000090-BEN
5 May, 2009

The International Federation's Disaster Relief Emergency Fund (DREF) is a source of un-earmarked money created by the Federation in 1985 to ensure that immediate financial support is available for Red Cross and Red Crescent response to emergencies. The DREF is a vital part of the International Federation's disaster response system and increases the ability of national societies to respond to disasters.

CHF 21,010 (USD 18,493 or EUR 13,936) is requested from the Federation's Disaster Relief Emergency Fund (DREF) to support the National Society in delivering immediate assistance to some 300 beneficiaries. Un-earmarked funds to repay DREF are encouraged.

Summary: The violent storms that occurred in Challa Ogoï in Ouessè community of Collines region (200 Km from Cotonou) have caused heavy material losses. The Red Cross of Benin (RCB) has deployed its teams of volunteers in the affected community. The Red Cross volunteers have been providing first-aid treatment to the affected people and assisting them in evacuating the remains of their belongings to safer places.

They are also offering psychological counselling in the affected community. A preliminary assessment carried out by the Red Cross of Benin showed that 95 houses and some blocks of a school complex were damaged. The roofs of these buildings were either partially or completely removed by the storms.

The Red Cross of Benin intends to assist the 300 most affected persons with construction materials to repair their damaged houses. The National Society will also be carrying out sensitization activities on good hygiene and sanitation practices among the 18,000 inhabitants of the affected community. The National Society will be working in close collaboration with the local authorities and the Ministry of Health.

This operation is expected to be implemented over 2 months, and will therefore be completed by June, 2009; a Final Report will be made available three months after the end of the operation (by September, 2009).

[<click here for the DREF budget ,](#)
[here for contact details,](#)
[or here to view the map of the affected area>](#)



One of the houses destroyed by the storms
Red Cross of Benin

The situation

The rainy season that commenced in Benin some few weeks ago coupled with severe storms in some parts of the country have caused heavy material damages in the Challa Ogoï in Ouessè community of the Collines

region of the country. About 95 houses and some blocks of classrooms of a school were affected by the storms. The roofs of these buildings were either partially or completely damaged. Some houses have also collapsed as a result of the rain that followed the storms. Most of the houses were built with mud. More than 800 people were affected with over 475 of them now sheltered with family members or friends. About 300 pupils are no longer attending classes.

A preliminary assessment carried out by the Red Cross of Benin showed that 95 houses were severely affected by the disaster. Communities are overcrowded, with affected populations living under very poor conditions, especially amongst host families that have gone beyond their hosting capacities. The rains are exposing them to health risks such as malaria, diarrhoea, typhoid, cholera and other water borne diseases. Hence there is the need to intervene to prevent outbreak of epidemics in the affected community.

Consultations are ongoing with other humanitarian stakeholders for possible interventions to assist the affected community. The local authorities have contacted WFP, CARE and UNDP for possible assistance and are expecting a favourable response from these agencies. Only the Benin Red Cross together with the local authorities has been present so far to assist the affected population.

Coordination and partnerships

With support from the West Coast regional office of the Federation, the Red Cross of Benin will be working in collaboration with the Ministries of Health and Family Affairs and the local authorities. The National Society will also continue to participate in coordination meetings with other stakeholders. This will contribute to avoiding a duplication of tasks among actors that may come to assist the affected community.

The Federation, through its delegation in Abuja, Nigeria, will continue to closely work with the National Society, supporting its staff and volunteers in all the activities. The delegation will continue to ensure that management and operational issues are directed and implemented within the principles and core values of the Red Cross Movement to meet the needs of the most vulnerable. The West Coast regional office team have been providing technical advice and support and to the Red Cross of Benin.

Red Cross and Red Crescent action

Volunteers of the Red Cross carried out a preliminary assessment of the disaster. In collaboration with local leaders, the volunteers assisted the affected people in moving their belongings to safer places. The Red Cross also offered first-aid assistance to the people injured. The results of the first rapid assessment showed the problems, the needs and the risks the affected population might face. Based on the outcome of the assessment and with technical support from the West Coast office of the Federation, the National Society plans to organize an appropriate response aiming at alleviating the suffering of the affected people.

The needs

Beneficiary selection:

The number of beneficiaries of this operation will be the 300 most affected persons. The affected school will also benefit from this assistance. The beneficiaries will be assisted with construction materials such as roofing sheets, nails and woods. The 18,000 persons in the affected community will benefit from the good hygiene and sanitation sensitization activities to be carried out by the Red Cross. The Red Cross volunteers in the local branch will also have their capacity strengthened through refresher training in community health and environmental issues and sensitization skills.

The proposed operation

Relief distributions

Objective: To assist 60 selected households (300 persons) and the community school to improve their living conditions through the distribution of construction materials to repair their houses and the school building.

Activities planned:

- Procure and distribute 840 corrugated iron roofing sheets, 900 pieces of wood, 70 kg of assorted nails, 150 rolls of wire;
- Conduct refresher course for 10 volunteers on relief distribution methods;
- Ensure that beneficiaries make effective use of the items received.

Hygiene and sanitation

Objective: To contribute to improving the knowledge of the community in good hygiene and sanitation practices.

Activities planned:

- Sensitize the target population on good hygiene and sanitation behaviour;
- Conduct refresher training in hygiene and sanitation promotion for 10 Red Cross volunteers;
- Sensitize the target population on environmental issues such as tree planting;
- Carry out monitoring visits to ensure continuation of good hygiene and sanitation practices in the target community.

How we work

All International Federation assistance seeks to adhere to the [Code of Conduct for the International Red Cross and Red Crescent Movement and Non-Governmental Organizations \(NGO's\) in Disaster Relief](#) and is committed to the [Humanitarian Charter and Minimum Standards in Disaster Response \(Sphere\)](#) in delivering assistance to the most vulnerable.

The International Federation's activities are aligned with its Global Agenda, which sets out four broad goals to meet the Federation's mission to "improve the lives of vulnerable people by mobilizing the power of humanity".

Global Agenda Goals:

- Reduce the numbers of deaths, injuries and impact from disasters.
- Reduce the number of deaths, illnesses and impact from diseases and public health emergencies.
- Increase local community, civil society and Red Cross Red Crescent capacity to address the most urgent situations of vulnerability.
- Reduce intolerance, discrimination and social exclusion and promote respect for diversity and human dignity.

Contact information

For further information specifically related to this operation please contact:

- In **Benin**: Hubert Chabi, Executive Secretary, Red Cross Society of Benin, Porto-Novo; phone: +229.95.71.17.55; email: chabihubert@yahoo.fr
- In **Nigeria**: Chinyere Emeka-Anuna, Acting Head of Federation West Coast Regional Office, Lagos; phone: +234.12.69.52.28; Fax: +234. 12. 69.52.29; email: chinyere.emekaanuna@ifrc.org
- In **Dakar**: Alasan Senghore, Head of Zone, West and Central Africa Zone, phone:+221.33.869.3640, Fax:+221.33.820.25.34, email: alasan.senghore@ifrc.org; Youcef Ait-chellouche, Disaster Management Coordinator, West and Central Africa Zone, phone: +221.77.638.98.61, email: youcef.aitchellouche@ifrc.org
- In **Geneva**: David Lynch, Operations Coordinator, phone: +41.227.30.46.75. email: david.lynch@ifrc.org

[<DREF budget \(if available\) and map below; click here to return to the title page>](#)

DREF OPERATION BUDGET SUMMARY

DREF BENIN Heavy Storms

BUDGET CHF

RELIEF NEEDS

Shelter	
Construction Materials	10,655
Clothing & Textiles	
Food	
Seeds & Plants	
Water & Sanitation	
Medical & First Aid	
Teaching Materials	1,100
Utensils & Tools	
Other Supplies & Services	550
Total Relief Needs	12,305

CAPITAL EQUIPMENT

Land & Buildings
Vehicles Purchase
Computers & Telecom Equipment
Office/Household Furniture & Equip.
Medical Equipment
Other Machinery & Equipment

TRANSPORT, STORAGE & VEHICLES

Storage - Warehouse	
Distribution & Monitoring	1,895
Transport & Vehicles Costs	2,630

PERSONNEL

International Staff	
Regionally Deployed Staff	
National Staff	250
National Society Staff	
Consultants	

WORKSHOPS & TRAINING

Workshops & Training	700
----------------------	-----

GENERAL EXPENSES

Travel	1,000
Information & Public Relations	
Office running costs	
Communication Costs	
Professional Fees	
Financial Charges	
Other General Expenses	864

SERVICE FEES

Service Fees

PROGRAMME SUPPORT

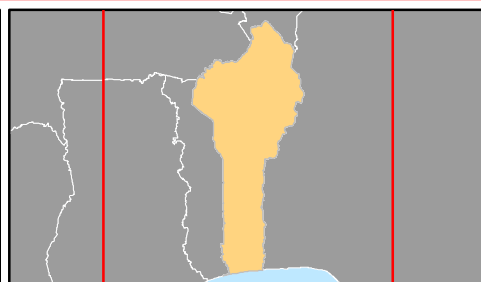
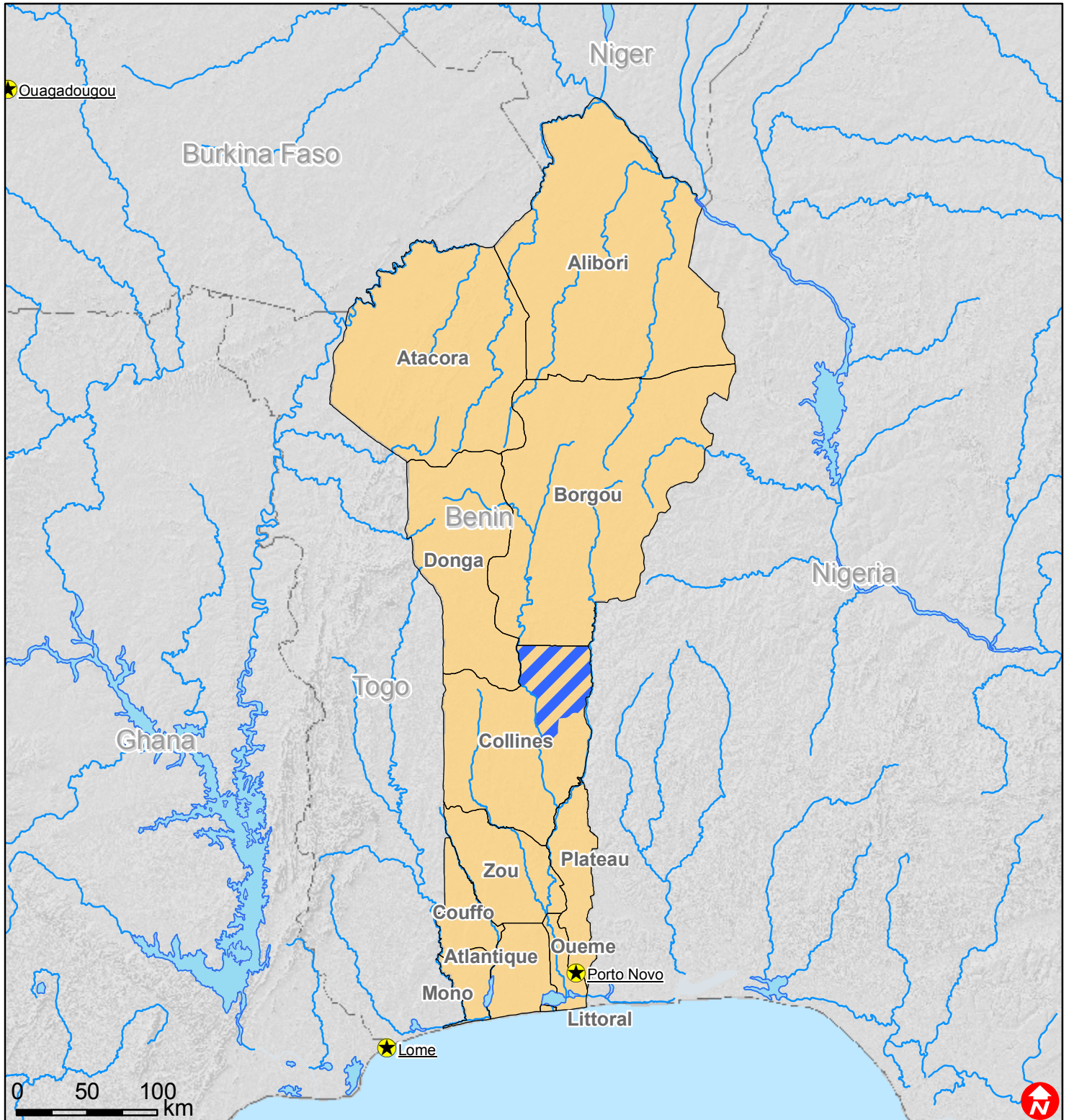
Programme Support - PSR	1,366
-------------------------	-------

Total Operational Needs 8,705

DREF ALLOCATION 21,010



Benin: Severe storms



- ★ Capitals
- Rivers
- Lakes
- Provinces
- ▨ Affected areas