

# DREF operation



International Federation  
of Red Cross and Red Crescent Societies

## Namibia : Floods

DREF operation n° MDRNA004  
GLIDE n° FL-2009-000062-NAM  
11 March, 2009

The International Federation's Disaster Relief Emergency Fund (DREF) is a source of un-earmarked money created by the Federation in 1985 to ensure that immediate financial support is available for Red Cross and Red Crescent response to emergencies. The DREF is a vital part of the International Federation's disaster response system and increases the ability of national societies to respond to disasters.

**CHF 146,695 (USD 124,473, EURO 99,224) has been allocated from the International Federation of Red Cross (IFRC)'s Disaster Relief Emergency Fund (DREF) to support the Namibia Red Cross Society in delivering immediate assistance to some 2,000 families. Un-earmarked funds to repay DREF are encouraged.**

**Summary:** The four north-western regions of Namibia were affected by heavy rains and subsequent flooding. The water level in Zambezi River rose by more one metre in less than a week to reach the five metre mark on first day of March 2009, leading to localised flooding and the consequent extensive damage to household

effects and displacement of communities. In addition, the flooded Kunene region reported a cholera outbreak that has caused seven deaths so far.



**Household submerged in flooded water in Ohangwena Region. Photo: Namibia Red Cross Society**

Namibia Red Cross Society (NRCS) is complementing the government efforts on responding to the needs of the displaced families through collaboration with the Disaster Management Unit. The emergency relief operation focuses on provision of temporary shelter, improving sanitation conditions, water supply, hygiene practice within the relocation camps, procurement and distribution of basic relief items. The IFRC Zone office in southern Africa is on standby to deploy additional support through mobilising the regional disaster response team (RDRT), at the request of the National Society.

The expected implementation period of this operation is three months, ending by June 2009; a Final Report will be made available three months after the end of the operation (by August 2009).

[<click here for the DREF budget, here for contact details, and here to view the map of the affected area>](#)

## The situation

Namibia as well as neighbouring Angola has been receiving heavy rains over the past three weeks, which led into localised flooding. The north-eastern and north-western parts of Namibia are the most affected, where thousands of families have since been displaced. While the initial heavy rains and flooding were primarily in the western region (Omusati), floods from upstream have hit the central and eastern areas (Oshana region and the western part of Ohangwena region).

Omusati, Ohangwena Oshana and Oshikoto regions, in the north-western regions are the worst affected. The flooding in the main Cuvelai basin has raised water levels in Oshakati by more than 0.5m in a few days, and large parts of the town are submerged. Similar conditions prevail in Ondjiva, north of the Namibia and Angola border. At Cuvelai town, which is approximately 150 km north of Ondjiva, water levels continue to rise. The situation is aggravated by continuous heavy rains that have washed away roads and bridges. Most feeder roads connecting to major towns have been washed away. A team of hydrologists from Angola and Namibia carried out aerial inspections in the upper part of the Cuvelai basin and revealed that flooded water continues building up from the north. At Evale, some 55 km north of Ondjiva, the water levels are said to be higher than the floods level experienced in 2008.

It is estimated that the number of affected people will double to 130,000 people; however, the actual number will be determined after a rapid assessment currently being conducted by the stakeholders. Some schools have closed, as children cannot cross the flooded rivers and road networks. Majority of health facilities in the affected areas are no longer accessible. The flooding has also submerged fields, causing extensive damage to crops.

Kunene region, in the north-western part of the country, reported an outbreak of cholera in the Okanguati and Opuwo areas. Reports from the Ministry of Health have revealed 143 suspected cholera cases, of which nine have been confirmed with seven related deaths last reported on 9 February 2009. The outbreak seems to have been brought under control, although the situation may escalate as the rains continue. A cholera outbreak is feared in all the affected regions, as the sanitation situation is generally poor in rural areas.

The Zambezi River in the Caprivi region rose to reach the five-metre mark on 1 March 2009, putting the communities living along its banks at risk. In Kabbe constituency, three villages have been reported submerged. Estimates are that more than 25,000 people will be affected by flooding in the Caprivi region alone.

A third high flood-wave has also appeared in the Kavango River at Rundu, where the water level is more than seven metres; much higher than normal and also higher than last year. The Kehemu informal settlement in Rundu has 25 households displaced.

NRCS jointly with Government's Directorate of Emergency Management and United Nations agencies conducted rapid assessments to investigate the extent and impact of the damage. The results of the assessments revealed that the affected communities are without adequate shelter, food, clean water, sanitation facilities and are at risk of water borne diseases.

The government has facilitated the formation of relocation camps to temporarily accommodate the displaced families. Four relocation camps in Ondangwa town in Oshana region accommodate approximately 250 people. In Oshakati, about 1,500 people are sheltered at two relocation camps, while Ohangwena region has a relocation camp that accommodates 32 families. In Omusati region, three relocation camps accommodate 40 families.

## Coordination and partnerships

Coordination for the emergency operation is led by the Office of the Prime Minister's Directorate of Emergency Management (DEM) at the national level, while the Regional Emergency Management Unit (REMU) coordinates at the regional level. The coordinating bodies are comprised of various line ministries, UN agencies (UNICEF, WHO, UNDP) and the NRCS. The National Society is a member of both the national and regional coordinating bodies that ensure stakeholder have clearly defined roles in order to avoid overlaps or duplication in response.

The stakeholders have jointly identified the areas of focus as outlined below:

- Conducting situational assessment;
- Evacuation and relocation of affected people;
- Provision of temporary shelter;
- Provision of food and other non-food basic relief items;
- Provision of emergency health services;
- Provision of safe water and sanitation facilities;
- Provision of educational facilities as most schools in the affected areas are closed;
- Camps management;
- Roads reconstruction.

The government and the local town councils have so far provided tents and food items to the affected families at the relocation camps. In Kunene region, a cholera treatment (isolation) centre has been established by the Ministry of Health with support from the NRCS.

The NRCS will be supported and guided by the IFRC country representative and the disaster management department at the IFRC Southern Africa Zone Office (SAZO). Apart from the DREF application, no other Movement partners have provided additional funding support; however are requested to assist with the replenishment of the DREF allocated to the National Society.

## Red Cross and Red Crescent action

Through its auxiliary role, NRCS is complementing the government efforts in the following areas:

- Needs and vulnerability assessments;
- Distribution of relief items (blankets, mosquito nets, tarpaulins, water makers, hygiene kits, jerry cans and soaps);
- Hygiene promotion conducted by NRCS trained volunteers within the relocation camps and surrounding communities;
- Construction of latrines and bathing shelters at the relocation camps;
- Camp management through facilitating the formation of sub-committees.

NRCS management deployed two national officers to support the local branches in the affected regions for a period of two months, subject to extension depending on the situation on the ground. The affected NRCS branches teamed up with the local government departments to conduct rapid assessments on the extent and impact of the damage caused by the floods, as well as to verify the needs and the coping capacity of the affected population. The secretary general of NRCS and the IFRC representative visited Kunene region affected by cholera and the flood-affected regions in the company of local authorities to assess the situation and monitor progress on the implementation of the relief activities.

Volunteers have been mobilised to conduct health education and hygiene promotion within the relocation camps, starting in Ohangwena region. In addition, the Red Cross volunteers distributed relief items such as mosquito nets, tarpaulins and blankets from NRCS' pre-positioned relief stock. In Ohangwena region, 66 blankets and nine tarpaulins were distributed and four family latrines constructed. A total of 28 tarpaulins, 76 blankets and 90 mosquito nets were distributed in Oshana region. The NRCS also provided 24 boats already in stock used for ferrying people and their salvaged household effects.

The regional branch in Kunene has been working together with the Ministry of Health to contain the cholera outbreak. Volunteers are involved in hygiene promotion in the villages alongside the distribution of 3,000 water purification tablets. Approximately 50 domestic latrines are being constructed in the villages affected by cholera, as part of the long-term water and sanitation project.

## The needs

### Beneficiary selection:

NRCS is targeting 2,000 families through this DREF supported operation. Priority will be given to elderly people, women and children. Registration has begun, but at this stage the detailed beneficiary lists are not available. Those affected are mainly the rural and informal settlement residents, in communities characterised by high levels of poverty, food insecurity, HIV and AIDS.

### Immediate Needs

Preliminary assessments revealed the following immediate needs: relief items, emergency shelter, emergency health, and clean water and sanitation facilities.

### Long-term Needs

Long-term needs include improving and sustaining livelihood for families affected by crop damage, as well as reconstruction of destroyed houses.



Relocation Camp in Ohangwena Region.  
Photo: Namibia Red Cross Society

## The proposed operation

### Relief distributions (food and basic non-food items)

**Objective: 2,000 flood-affected households are provided with appropriate non-food relief items. Distributions are carried out according to assessments and selection criteria that identify actual needs and vulnerable groups, as per the registration protocol that ensures control, monitoring and recording movement of goods.**

#### Activities planned:

- Conducting joint needs and capacity assessments in Oshana, Omusati, Ohangwena, Oshana, Kavango and Caprivi regions.
- Distributing 1,200 blankets, 1,500 mosquito nets, 3,000 bars of soap and 2,000 hygiene kits to relocated school children and lactating mothers.
- Monitoring and evaluating relief activities and providing reports on relief distributions.

### Water, sanitation, and hygiene promotion

**Objective: The risk of water-borne and water-related diseases reduced through the provision of safe water, adequate sanitation facilities and hygiene promotion to 2,000 families in Oshana, Omusati, Ohangwena, Oshana, Kavango and Caprivi for three months.**

#### Activities planned:

- Distributing water purification sachet to 2,000 households (450,000 sachets in three months).
- Distributing household level water storage (i.e. jerry cans) to 500 households.
- Assisting with the construction of 50 temporary latrines and bathing shelters.
- Training 100 community-based volunteers on health and hygiene promotion.
- Conducting hygiene promotion campaigns within the affected population, focusing on behaviour change.
- Providing information, education and communication (IEC) material on hygiene promotion (printed materials, posters, flyers, manuals, educational materials).

## **Emergency shelter**

**Objective: 1,000 most vulnerable flood-affected families in Namibia are living in a safe and healthy environment within three months of the operation.**

### **Activities planned:**

- Distributing 1,000 tarpaulins to the affected families.

## **Emergency health**

**Objective: To reduce health risks, morbidity and mortality resulting from the emergency by providing health education, community-level and primary healthcare services to households in affected regions for three months.**

### **Activities planned:**

- Training 150 community-based volunteers on health education using the community-based health and First Aid methodology.
- Sustain health promotion campaigns within the affected population focusing on malaria and water-borne diseases, targeting 30,000 households in affected areas.
- Support and provide printed and other materials to be used in the health promotion campaign (such as posters, flyers, manuals, educational materials).

## **Logistics**

**Objective: To support the relief operations, delivering a range of relief items in line with the operational priorities.**

### **Activities planned:**

- Procuring and distributing relief supplies and controlling supply movements from point of dispatch to end user.
- Monitoring and evaluating relief activities and reporting on relief distributions.
- Establishing appropriate warehouses and arranging transportation to distribution points.

## **Communication and advocacy**

**Objective: To better profile and position the NRCS as a leading organisation in disaster management in Namibia.**

### **Activities planned:**

- Engaging the media on NRCS response activities, twice a month for three months.
- Producing press releases as necessary; organizing radio/television talks on response activities carried out by NRCS.
- Sharing reports/updates with all the partners nationally and internationally.
- Producing a brochure/DVD on the response operation after three months.

## How we work

*All International Federation assistance seeks to adhere to the [Code of Conduct for the International Red Cross and Red Crescent Movement and Non-Governmental Organizations \(NGO's\) in Disaster Relief](#) and is committed to the [Humanitarian Charter and Minimum Standards in Disaster Response \(Sphere\)](#) in delivering assistance to the most vulnerable.*

The International Federation's activities are aligned with its Global Agenda, which sets out four broad goals to meet the Federation's mission to "improve the lives of vulnerable people by mobilizing the power of humanity".

### Global Agenda Goals:

- Reduce the numbers of deaths, injuries and impact from disasters.
- Reduce the number of deaths, illnesses and impact from diseases and public health emergencies.
- Increase local community, civil society and Red Cross Red Crescent capacity to address the most urgent situations of vulnerability.
- Reduce intolerance, discrimination and social exclusion and promote respect for diversity and human dignity.

## Contact information

### For further information specifically related to this operation please contact:

- In **Namibia**: Dorkas Kepembe-Haiduwa; Secretary General, Email [secgen@redcross.org.na](mailto:secgen@redcross.org.na); Phone: Tel: +264.61.235.216; Fax: 264.61.228.949
- In **Namibia**: Getachew Ta'a; Federation Representative; Email: [getachew.taa@ifrc.org](mailto:getachew.taa@ifrc.org); Phone: Tel: +264.263.177; Fax: +264.263.286
- In **Southern Africa Zone**: Françoise Le Goff, Head of Zone Office, Johannesburg; Email [francoise.legoff@ifrc.org](mailto:francoise.legoff@ifrc.org); Phone: Tel: +27.11.303.9700; +27.11.303.9711; Fax: +27.11.884.3809; +27.11.884.0230
- In **Geneva**: John Roche, Operations Coordinator, Email: [john.roche@ifrc.org](mailto:john.roche@ifrc.org); Phone: +41.22.730.4400, Fax: +41.22.733.03.95

[<DREF budget and map below; click here to return to the title page>](#)

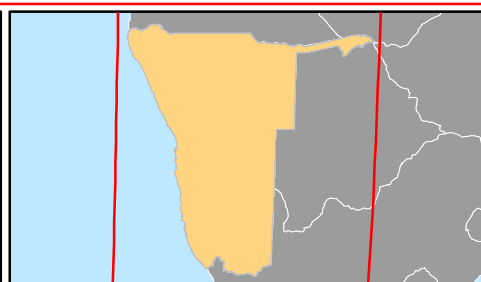
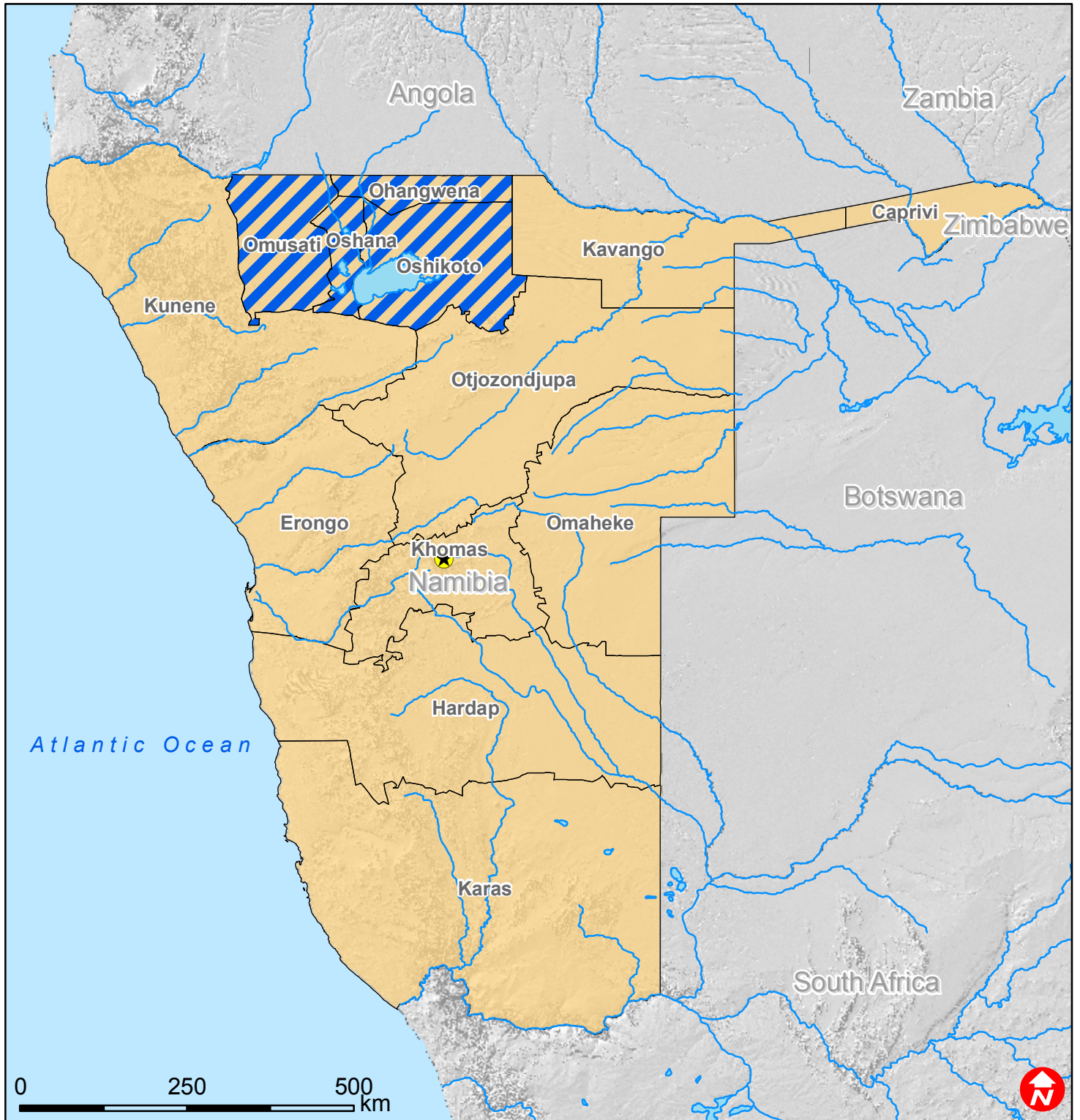
## **NAMIBIA FLOODS DREF BUDGET SUMMARY**

**ORIGINAL**

<b><u>RELIEF NEEDS</u></b>		
500	Shelter	14,755
510	Clothing & Textiles	18,387
520	Food	0
523	Seeds & Plants	0
530	Water & Sanitation	18,160
540	Medical & First Aid	1,000
550	Teaching Materials	1,000
560	Utensils & Tools	2,270
570	Other Supplies & Services	9,994
<b>Total Relief Needs</b>		<b>63,569</b>
<b><u>CAPITAL EQUIPMENT</u></b>		
580	Land & Buildings	0
581	Vehicles Purchase	0
582	Computers & Telecom Equipment	0
587	Medical Equipment	0
589	Other Machinery & Equipment	0
<b><u>TRANSPORT, STORAGE &amp; VEHICLES</u></b>		
590	Storage - Warehouse	7,500
593	Transport & Vehicles Costs	11,000
<b><u>PERSONNEL</u></b>		
600	International Staff	0
640	Regionally Deployed Staff	39,938
670	Consultants	0
<b><u>WORKSHOPS &amp; TRAINING</u></b>		
680	Workshops & Training	0
<b><u>GENERAL EXPENSES</u></b>		
700	Travel	6,362
710	Information & Public Relations	2,000
730	Office running costs	0
740	Communication Costs	2,500
750	Professional Fees	0
755	Core cost & sundry	13,826
<b><u>PROGRAMME SUPPORT</u></b>		
599	Programme Support - PSR	0
<b>Total Operational Needs</b>		<b>83,126</b>
<b>Total Appeal Budget (Cash &amp; Kind)</b>		<b>146,695</b>



# Namibia: Floods



- Capitals
- Rivers
- Lakes
- Provinces
- Affected areas