

# Emergency appeal



International Federation  
of Red Cross and Red Crescent Societies

## El Salvador: Floods

Emergency Appeal n°  
MDRSV002

GLIDE n° FL-2009-000238-SLV  
16 November 2009

This Emergency Appeal seeks CHF 1,701,194 (USD 1,681,039 or EUR 1,127,553) in cash, kind, or services to support the Salvadoran Red Cross Society (SRCS) to assist 2,000 families (10,000 beneficiaries) for 9 months, as well as CHF 173,262 for the Shelter Cluster coordination. This operation will be completed by the end of August 2010. A Final Report will be made available by the end of November 2010 (three months after the end of the operation).



Homes destroyed due to the floods that brought in mud and debris. Source: Salvadoran Red Cross Society.

CHF 182,501 (USD 180,614 or EUR 120,783) was allocated from the Federation's Disaster Relief Emergency Fund (DREF) on 9 November 2009 to support this operation. The Canadian government through the Canadian Red Cross and the Italian government have generously replenished the DREF funds allocated to this emergency.

On 7 November 2009, the passing of Tropical Storm Ida and the low pressure system caused heavy rain, floods and landslides throughout the country affecting around 15,000 families. On 9 November 2009, the Salvadoran Legislative Assembly declared a state of public calamity. Based on the situation, this Emergency Appeal responds to a request from the Salvadoran Red Cross Society, and focuses on providing support to ensure an appropriate and timely response in delivering assistance and relief in the following sectors: relief distributions, shelter, emergency health and care, water and sanitation and hygiene promotion and rehabilitation of livelihoods.

[<Click here to view the attached Emergency Appeal Budget;](#)  
[here to link to a map of the affected area; or here to view contact details>](#)

## The situation

During 7 and 8 November, the passage of Tropical Storm Ida through Central America, which coincided with a low pressure system over the Pacific coast of El Salvador and Guatemala, caused heavy rainfall in El Salvador. According to meteorological data, up to 350mm of rainfall were registered. The storm caused the overflowing of main rivers such as the Acelhuate, Tomayate, Huiza, Altos de San Roque and Jiboa rivers, as well as flooding and mudslides which severely affected seven departments in the central zone of the country: San Salvador, San Vicente, Usulután, La Paz, La Libertad, Cabañas and Cuscatlán. The overflowing rivers swept through different areas, destroying water, electrical and telecommunications



An entire community completely covered by water. Source: Salvadoran Red Cross Society.

systems, and damaging roads, health and educational centres and houses. Thus, the Salvadoran President decreed a state of national emergency on 8 November.

Currently, there are 117 collective centres providing shelter to a total of 14,295 people in the seven affected departments. The immediate needs are being identified in each collective centre by governmental agencies which are committed to carrying out close monitoring to ensure that needs are met.

The following table shows the number of affected families and damages registered to date:

N° of People		Damages to infrastructure	
Deaths	192	Damaged houses	462
		Households at risk	630
Missing people	80	Damaged bridges	24
People staying in collective shelters	14,295 (of which 7,851 people are being sheltered in the department of La Paz).	Damaged schools	18
		Health centres affected	25

The Civil Protection reports that 37 tons of relief items have been delivered to 6,000 people, and in the health sector there are specific plans to provide care and basic health services to the injured people through medical personnel in the collective centres. A total of 13,258 medical consultations have been carried out, most of them in the department of La Paz.

After the completion of search and rescue activities during the first 36 hours in close collaboration with the Civil Protection, the Salvadoran Red Cross Society started the response phase in the most affected areas of the country, by conducting damage and needs assessments, and distributing relief aid and safe drinking water. The Salvadoran Red Cross Society is launching this international appeal in order to respond to the short and medium-term needs of the affected population.

## Coordination and partnerships

At governmental level, the SRCS has ensured coordination with the Civil Protection since the National Society forms part of the National Civil Protection Commission in the country. The National Society is also a member of the FOSALUD Commission which is a national fund for health initiatives.

Coordination with members of the Movement has been crucial from the outset, and the SRCS has received support from the Partner National Societies (PNS) present in the country: the Finnish Red Cross, the Spanish Red Cross and the Swiss Red Cross. In addition, the Pan American Disaster Response Unit (PADRU), the Federation's country project coordinator, the health officer based in El Salvador and the Regional Representation have been providing support and advice to the SRCS to initiate humanitarian activities and have ensured contact with other PNS which are not present in the country but are equally interested in supporting the SRCS. The Canadian government through the Canadian Red Cross and the Italian government have provided financial support to this operation by replenishing the DREF funds.

In addition, the Regional Logistics Unit (RLU) in Panama has dispatched relief items for 1,500 families (included in the DREF allocation) by charter flight and the Salvadoran Red Cross Society has received the cargo and has started to distribute the humanitarian aid to the affected people. The transportation costs of the relief items to El Salvador were covered by the tripartite agreement between the International Federation and the governments of Canada, Mexico and the United States. In addition, the RLU sent 5,000 blankets thanks to the Spanish International Development Agency (Agencia Espanola de Cooperacion Internacional para el Desarrollo AECID). The AECID's Logistics Humanitarian Centre in Latin America coordinated and transported 5,000 blankets (equal to 33 percent of storage space within their charter flight) to El Salvador on 10 November.

With regard to coordination with other institutions and organizations involved in humanitarian aid, the SRCS together with the Federation's country project coordinator have held a number of meetings with NGOs and the United Nations system. This coordination is vital in the early stages to avoid duplication and to ensure standardization in response and its quality, ensuring dignified humanitarian action in accordance with the needs of the affected Salvadoran population. In order to achieve this, alliances and associations are being considered with these organizations to maximize efforts and complement actions.

Regarding inter-agency coordination, the in-country humanitarian coordinator has identified sectors for response actions, and focal points are working in the Operations Centre in Civil Protection to ensure coordination. Liaison has been established between national commissions and clusters/sectors identified by the United Nations country team and humanitarian partners. The International Federation regional shelter advisor has been deployed and will liaise with the UN agencies and humanitarian partners for support for possible cluster activation. The cluster approach is being formalized and a dedicated International Federation led team is being deployed. The International Federation is seeking contributions to fund the activities of this team through this Emergency Appeal through a separate project code.

## Red Cross and Red Crescent action

Since the onset of the emergency on 7 November 2009, the Salvadoran Red Cross Society activated its Emergency Operations Centre and 500 volunteers were mobilized. In addition, SRC specialized personnel were activated including Flood Rescue Teams (Técnica de Rescate para Inundaciones, TREPI), vertical rescue teams, diving and boating teams, specialized transport teams, first aid units, damage and needs assessment teams and National Intervention Teams (NITs). In the search and rescue activities in the lake of Apulo in the communities of San Agustín and Joya Grande, two boats were utilized to reach the affected areas due to the fact that access by road was impossible.



Initial distribution activities carried out by the Salvadoran Red Cross Society Source: Salvadoran Red Cross Society.

During the search and rescue activities, the Salvadoran Red Cross Society's volunteers started the distribution of water in five of the most affected departments; damage assessments were also carried out. Details of initial assessments were obtained from the department of San Vicente thanks to the support of the Swiss Red Cross. From the department of San Salvador information was shared by OXFAM and was obtained from assessments carried out by the SRCS, and from the department of La Paz details were provided thanks to the technical personnel from DIPECHO VI.

The distribution of the humanitarian aid is being carried out in several areas within the most affected departments. The distributions were coordinated with the Civil Protection and other organizations including OXFAM, Care and Plan International. Thanks to the assistance of these organizations, the SRCS could assist affected people that had not yet received any help.

The following table shows the humanitarian aid distributed to date:

Departments	People	Families	Hygiene kits	Kitchen kits	Blankets	Buckets	Mattresses
San Salvador	1,393	286	286	122	-	274	122
La Libertad	450	90	90	90	180	90	-
La Paz	5,850	1,170	869	269	1,650	269	-
San Vicente	-	-	-	-	-	-	-
Cuscatlan	575	115	130	130	260	-	-
Cabañas	40	8	8	8	24	8	-
<b>Total</b>	<b>8,308</b>	<b>1,669</b>	<b>1,383</b>	<b>619</b>	<b>2,114</b>	<b>641</b>	<b>122</b>

These distributions were made possible thanks to in-kind donations from the Spanish Red Cross and the Swiss Red Cross, and pre-positioned items from the Salvadoran Red Cross Society. Additionally, with the DREF funds, the SRCS received essential relief items for 1,500 families on 11 November and these will be distributed shortly.

## The needs

### Beneficiary selection:

This emergency appeal aims to assist 2,000 of the most affected families due to the passing of Tropical Storm Ida and the low pressure system in the most affected departments of San Salvador, San Vicente, Usulután, La Paz, Cuscatlán, Cabañas and La Libertad. These families have lost their homes, personal belongings and have nowhere to live and have lost their source of livelihood. Several of the selected families are currently housed in 131 provisional collective centers or with host families.

The beneficiary criteria for the selected families will be based on the results of the damage and needs assessments carried out by the assessment teams which will provide a detailed list of the affected families and their location, situation and needs in five of the most affected departments: San Salvador, San Vicente, La Paz, Cuscatlán and La Libertad. Moreover, the selection of beneficiaries will prioritize the most vulnerable people considering their specific needs:

- Single headed households.
- Elderly people.
- Families with members with disabilities.
- Families with five or more members who are 16 years of age or less.

### Immediate needs:

The immediate needs identified are: food items, potable water, hygiene items, shelter and basic health care (preventive medical attention and psychosocial support).

### Longer-term needs:

This emergency appeal aims to restore damaged water systems, provide medical services, rehabilitate livelihoods (food security) and rebuild destroyed and/or damaged houses in a medium to long term timeframe. Additional livelihood activities will be contemplated after more detailed needs assessments are completed.

## The proposed operation

The operation will have a timeframe of nine months and activities will be implemented in municipalities within the five most affected departments. The SRCS has established the following lines of action:

- Distribution of food and non-food items.
- Shelter
- Emergency health
- Water and sanitation
- Early recovery/recovery

For the distribution of the relief items, the SRCS's main objective is to provide 2,000 families with food and non-food items. During the initial response and early recovery activities, the National Society will promote an integral approach in order to ensure enhanced impact and an efficient response. The SRCS will take advantage of the capacities gained from previous disaster preparedness projects carried out at the municipal and community level in the selected departments.

The results of the damage and need assessments and the development of the situation might modify this initial plan of intervention; therefore the SRCS is constantly monitoring the emergency.

Likewise, it is essential to set out an exit strategy from the beginning of the response and define clear bases for the development phase. It is also very important take into account climate change, the consequences of which are evident in the Central American region.

### Relief distributions (food and basic non-food items)

<b>Objective: 2,000 of the most affected families will benefit from essential relief items including blankets, hygiene kits, kitchen kits and food parcels.</b>	
<b>Expected results</b>	<b>Activities planned</b>
2,000 families (approximately 10,000 people) will be assisted with essential relief items such as blankets, hygiene kits, kitchen kits and food parcels.	<ul style="list-style-type: none"> <li>• Procurement of non-food items.</li> <li>• Transportation of relief items to El Salvador</li> <li>• Local procurement of food items</li> <li>• Development of beneficiary targeting strategy and registration system to deliver intended assistance.</li> <li>• Distribution of relief supplies and control of supply movements from point of dispatch to end user.</li> <li>• Monitoring and evaluation of the relief activities and reporting on relief distributions.</li> <li>• Development of an exit strategy.</li> </ul>

### Shelter

<b>Objective: 300 households affected by the floods have safe, healthy and adequate shelter and settlement solutions through the provision of locally appropriate housing in the departments of San Vicente, La Paz, Cuscatlán and/or San Salvador once the operation has been completed.</b>	
<b>Expected results</b>	<b>Activities planned</b>
300 families have an adequate, shelter solution according to local materials and technical construction.	<ul style="list-style-type: none"> <li>• Assess the scope of the shelter needs and identify preferred shelter solutions to respond to the needs of the most vulnerable families affected by the floods.</li> <li>• Enable the provision of safe, healthy and appropriate local shelter solutions by programming methodologies with a comprehensive scope, adapted to the situation of the most vulnerable families.</li> <li>• Promote safe, healthy and durable shelter where possible through the provision of technical assistance and guidance to all involved in the shelter activities.</li> <li>• Promote increased awareness and understanding of safe and appropriate shelter response programming.</li> <li>• Work in coordination with other actors.</li> </ul>

All solutions contemplated within this objective will fulfill with the minimum standards which are internationally recognized and will contribute to guarantee their technical specifications. To complete this objective, activities will be carried out to ensure complementarily with the other sectors within the appeal to guarantee an integral approach in shelter response.

### Emergency health

<b>Objective: Psychosocial support will be provided for 1,000 families (5,000 beneficiaries) in the five most affected departments.</b>	
<b>Expected Results</b>	<b>Activities planned</b>
1,000 families (approximately 5,000 persons) benefit from psychosocial support.	<ul style="list-style-type: none"> <li>• Provision of psychosocial support to SRCS volunteers and personnel involved in the emergency response.</li> <li>• Identification of affected people to receive psychosocial support in the affected communities.</li> <li>• Carrying out of group and individual psychosocial support activities.</li> <li>• Carrying out of recreational activities for the affected children.</li> <li>• Mobilization of National Intervention Teams to identify additional health needs in the affected communities</li> </ul>

After the NIT teams complete assessments and identify the immediate health needs, additional activities could be included within this objective. Primary health care is being provided by the government, but the SRCS will also provide support through mobile health units, according to the needs.

### Water, sanitation, and hygiene promotion

<b>Objective: The water and sanitation needs of the target population identified in the assessments are met with an appropriate planned programme. This plan may include an initial provision of clean drinking water to address emergency needs (e.g. ensure safe water supply by cleaning wells)</b>	
<b>Expected results</b>	<b>Activities planned</b>
Safe water is provided to 1,000 families as damaged systems are restored.	<ul style="list-style-type: none"> <li>• Conduct rapid assessments on water and sanitation and hygiene promotion.</li> <li>• Distribution of water using truck cisterns, bladders and jerry cans.</li> <li>• Distribution of water purification tablets.</li> <li>• Monitoring of the quality of water in communities to be benefited.</li> <li>• Procurement of water pumps equipment.</li> </ul>
Appropriate sanitation, including excreta disposal, solid waste disposal, vector control and water drainage disposal is provided to 500 families.	<ul style="list-style-type: none"> <li>• Identification of communal latrines in accordance with the type of terrain.</li> <li>• Building of 100 new and repairing of damaged latrines.</li> <li>• Coordination with municipalities in the intervention areas for the movement and disposal of solid waste.</li> <li>• Cleaning campaigns.</li> <li>• Entomology surveys.</li> <li>• Trainings in water and sanitation</li> <li>• Purchasing of materials and equipment.</li> </ul>
The hygiene behaviour of 1,000 families is improved through hygiene promotion activities.	<ul style="list-style-type: none"> <li>• Training days on basic sanitation and hygiene promotion in collective centres, schools and communities.</li> <li>• Printing of educational material</li> <li>• Coordination with the inter-sector committees to support the sanitation related activities.</li> </ul>

### Early recovery/Recovery

<b>Objective: Needs will be assessed, planned and implemented together with the affected communities and key local, national and international stakeholders. The affected families will have access to food and destroyed infrastructures will be restored at the community level.</b>	
<b>Expected results</b>	<b>Activities planned</b>
Infrastructures will be	<ul style="list-style-type: none"> <li>• Restoration of water distribution systems (water tanks, sewer</li> </ul>

rehabilitated	systems, water sources, etc.) and cleaning and rehabilitation of water wells.
500 families will have food security by rehabilitating their crops through the distribution of seeds, fertilizers and agricultural tools to plant 170 hectares of white maize.	<ul style="list-style-type: none"> <li>• Soil conservation work, agricultural supplies and tools / silos for grain storage / trainings</li> </ul>
The capacity of the affected communities will be ensured to guarantee the viability of the implemented actions in disaster prevention.	<ul style="list-style-type: none"> <li>• Identify and create community brigades</li> <li>• Train brigades on community-based health and first aid, Vulnerability and Capacity Assessments (VCA) and in hygiene and sanitation promotion.</li> <li>• Increase the involvement of women in the decision making in the community brigades.</li> </ul>

### National Society Capacity-Building

**Objective: The capacity of the Salvadoran Red Cross Society will have been strengthened to be better prepared for future emergencies.**

Expected Results	Activities planned
The National Society and its local branches will be better prepared for future disaster response.	<ul style="list-style-type: none"> <li>• National Intervention Team workshop on water and sanitation and hygiene promotion.</li> <li>• Procurement of office equipment for the disaster response office</li> <li>• Infrastructure repairing of affected local branches.</li> <li>• Procurement of one vehicle.</li> <li>• Vehicle maintenance.</li> <li>• Maintenance of water and sanitation equipment used in the operation.</li> <li>• Organizational development activities in selected branches.</li> <li>• Procurement of telecommunications equipment.</li> <li>• Provision of visibility and relief equipment to volunteers according to established standards</li> </ul>

### Logistics

The Regional Logistics Unit (RLU) in Panama will support the Salvadoran Red Cross Society in arranging the appropriate transportation and storage of the relief items. In addition, the RLU will provide logistical support and reinforce the existing logistics capacity of the National Society. The RLU will coordinate procurement and mobilization of non-food items included in this emergency appeal. A mobilization table will be available on DMIS.

### Communications – Advocacy and Public information

Maintaining a steady flow of timely and accurate information between the field and other major stakeholders is vital for advocacy, maintaining the profile of the emergency operation and for fundraising. During an operation, communications between affected populations and the Red Cross and Red Crescent, as well as with the media and donors, is an essential mechanism for effective disaster response and the cornerstone to promoting greater quality, accountability, and transparency. The communications activities covered by this appeal are aimed at supporting the Salvadoran Red Cross Society to improve its communications capacities and develop appropriate communications tools and products to support an effective operation. These activities will include training, capacity building, as well as material support and are closely coordinated with the Communications Department of the International Federation's Secretariat in Geneva.

To date, there have already been over four story publications, one press release and two media announcements (<http://www.ifrc.org/docs/news/09/09111002/>, <http://www.ifrc.org/docs/news/09/09110902/>). The Salvadoran Red Cross Society will work to maintain a media focus on this emergency response.

### Capacity of the National Society

The Salvadoran Red Cross Society has more than 500 active volunteers dedicated exclusively to this emergency, as well as specialized personnel in several areas: flood rescue teams (Técnica de Rescate para Inundaciones - TREPI), vertical rescue teams, diving and boat units, first aid units and damage and needs assessment teams.

The National Society has ample experience in managing emergencies and disasters at a national level that have occurred for more than a decade, including major operations in response to Hurricane Mitch in 1998, the earthquake in 2001, Hurricane Stan in 2005 and the Santa Ana volcano eruption in 2005.

In the departments of la Paz, La Libertad, Cuscatlán and San Vicente the Salvadoran Red Cross Society has implemented disaster preparedness projects (Municipal Disaster Mitigation project) in 30 municipalities and 90 education centres training approximately 45,000 people who are members of municipal commissions, firemen, teachers, mayors and SRC volunteers in sectors including water and sanitation, collective centres and psychosocial support. Contingency plans have been designed in each municipality and risk mapping was carried out along with geological and hydrological studies. In addition, Emergency Operations Centres have been installed in each mayor's office with telecommunications equipment to link them with the Civil Protection. In the department of La Paz a disaster preparedness project was implemented by the National Society and financed by ECHO (DIPECHO V) mainly to provide community support. Meteorological stations, radio communication systems, early warning systems and pluviometers were set up and communities are in communication with the scientific technical follow-up body (Seguimiento Técnico Científico - SNET). In the departments of San Vicente and La Libertad community brigades were formed, trained and equipped with radios and first aid items and contingency plans were drawn up.

### Capacity of the Federation

The International Federation through PADRU, in coordination with the Zone office in the Americas, the Regional Representation and the country project coordinator is providing support to the Salvadoran Red Cross Society for the response needs, by organizing the provision of relief items, the development of plans of action and the coordination of logistics and human resources as needed.

The International Federation has currently deployed a PADRU team including a team leader and a disaster management delegate. The country project coordinator and the regional health officer of the International Federation present in El Salvador are strongly supporting the initial assessments and assisting the National Society to initiate the response. The International Federation has a strong pool of RIT members that can be deployed quickly to provide additional support if required.

PADRU in Panama has the capacity to deliver relief packages to 5,000 families within 48 hours, and to a further 15,000 families within 14 days. In addition, the Global Fleet Base in Panama has approximately 20 all terrain vehicles available in case the affected National Society requests additional transportation equipment.

### Budget summary

See attached budget (Annex 1) for details.

Yasemin Aysan  
Under Secretary General  
Disaster Response and Early Recovery Division

Bekele Geleta  
Secretary General

### How we work

*All International Federation assistance seeks to adhere to the [Code of Conduct for the International Red Cross and Red Crescent Movement and Non-Governmental Organizations \(NGO's\) in Disaster Relief](#) and is committed to the [Humanitarian Charter and Minimum Standards in Disaster Response \(Sphere\)](#) in delivering assistance to the most vulnerable.*

The International Federation's activities are aligned with its Global Agenda, which sets out four broad goals to meet the Federation's mission to "improve the lives of vulnerable people by mobilizing the power of humanity".

#### **Global Agenda Goals:**

- Reduce the numbers of deaths, injuries and impact from disasters.
- Reduce the number of deaths, illnesses and impact from diseases and public health emergencies.
- Increase local community, civil society and Red Cross Red Crescent capacity to address the most urgent situations of vulnerability.
- Reduce intolerance, discrimination and social exclusion and promote respect for diversity and human dignity.

## **Contact information**

**For further information specifically related to this operation please contact:**

- **In El Salvador:** Mirna Zelaya, Salvadorian Red Cross Society, Executive Director; phone: (503) 7578 9879, email: [mirna.zelaya@cruzrojasal.org.sv](mailto:mirna.zelaya@cruzrojasal.org.sv).
- **In Costa Rica:** Fabricio López, Regional Representative for Central America and Mexico; phone: (507) 380 0250; fax: (507) 317 1304; email: [fabricio.lopez@ifrc.org](mailto:fabricio.lopez@ifrc.org).
- **In Panama:** Mauricio Bustamante, Acting Head of the Pan American Disaster Response Unit; phone: (507) 316 001; fax: (507) 316 1082; email: [mauricio.bustamante@ifrc.org](mailto:mauricio.bustamante@ifrc.org).
- **In Panama:** Natalia Garcia, Disaster Management delegate, Pan American Disaster Response Unit; (507) 316 001; fax: (507) 316 1082; email: [Natalia.garcia@ifrc.org](mailto:Natalia.garcia@ifrc.org).
- **In Panama:** Ilir Caushaj, Regional Logistics Coordinator, Pan American Disaster Response Unit; phone: (507) 316 001; fax: (507) 316 1082; email: [ilir.caushaj@ifrc.org](mailto:ilir.caushaj@ifrc.org).
- **In Panama:** Maria Alcázar, Resource Mobilization Coordinator for the Americas; phone: (507) 380 0254; fax: (507) 317 1304; email: [maria.alcazar@ifrc.org](mailto:maria.alcazar@ifrc.org).
- **In Geneva:** Pablo Medina, Operations Coordinator for the Americas; phone: (41) 22 730 4300; email: [pablo.medina@ifrc.org](mailto:pablo.medina@ifrc.org).

**[< Emergency Appeal budget or map below; click here to return to the title page >](#)**

**APPEAL BUDGET SUMMARY**

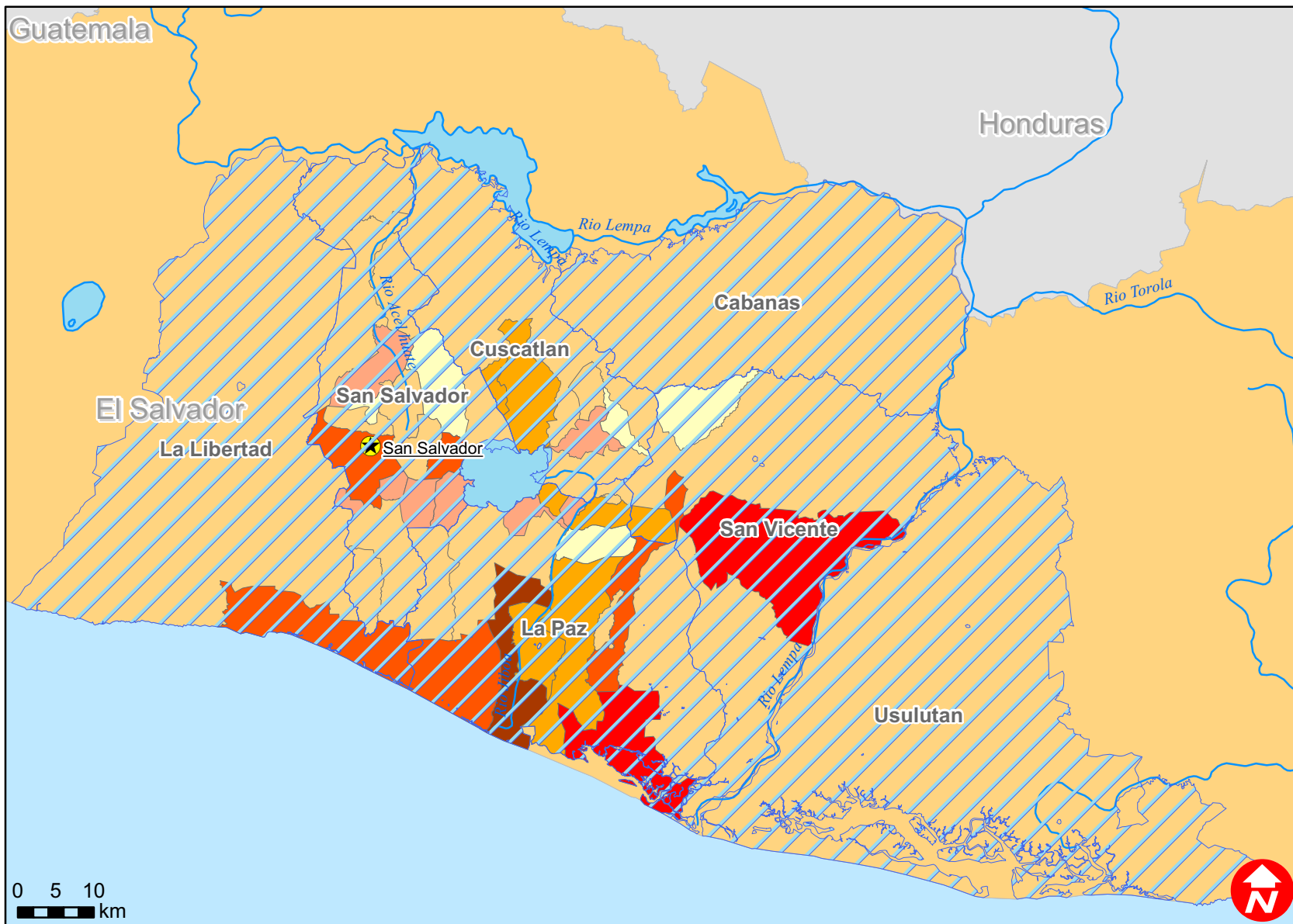
Annex 1


**EL SALVADOR FLOODS****MDRSV002**

	<b>SUPPORT TO NATIONAL SOCIETY</b>	<b>SHELTER CLUSTER COORDINATION</b>	<b>TOTAL</b>
<b><u>RELIEF NEEDS</u></b>			
500 Shelter	213,652		213,652
505 Construction Materials	10,174		10,174
510 Clothing & Textiles	51,378		51,378
520 Food	91,565		91,565
523 Seeds & Plants	122,087		122,087
530 Water & Sanitation	406,956		406,956
540 Medical & First Aid	40,696		40,696
550 Teaching Materials			0
560 Utensils & Tools	58,296		58,296
570 Other Supplies & Services	49,445		49,445
571 Emergency Response Units (ERUs)			0
<b>Total Relief Needs</b>	<b>1,044,249</b>	<b>0</b>	<b>1,044,249</b>
<b><u>CAPITAL EQUIPMENT</u></b>			
580 Land & Buildings			0
581 Vehicles Purchase	25,435		25,435
582 Computers & Telecom Equipment	8,139		8,139
584 Office/Household Furniture & Equip.			0
587 Medical Equipment			0
589 Other Machinery & Equipment			0
<b><u>TRANSPORT, STORAGE &amp; VEHICLES</u></b>			
590 Storage - Warehouse	3,663		3,663
592 Distribution & Monitoring	71,217		71,217
593 Transport & Vehicles Costs	18,313	5,000	23,313
594 Service & Recovery	12,209		12,209
<b><u>PERSONNEL</u></b>			
600 International Staff	1,679	102,000	103,679
640 Regionally Deployed Staff	3,357		3,357
661 National Staff	9,132	10,000	19,132
662 National Society Staff	80,659		80,659
670 Consultants		25,000	25,000
<b><u>WORKSHOPS &amp; TRAINING</u></b>			
680 Workshops & Training	20,348		20,348
<b><u>GENERAL EXPENSES</u></b>			
700 Travel	9,907	10,000	19,907
710 Information & Public Relations	8,393		8,393
730 Office running costs	18,313	10,000	28,313
740 Communication Costs	27,470		27,470
750 Professional Fees			0
760 Financial Charges	66,134		66,134
790 Other General Expenses			0
798 Depreciation			0
799 Shared Services			0
<b><u>PROGRAMME SUPPORT</u></b>			
599 Programme Support - PSR	99,316	11,262	110,578
<b>Total Operational and Coordination Needs</b>	<b>483,683</b>	<b>173,262</b>	<b>656,945</b>
<b>Total Appeal Budget (Cash &amp; Kind)</b>	<b>1,527,932</b>	<b>173,262</b>	<b>1,701,194</b>
<b>Available Resources</b>			
<b>Net Request</b>	<b>1,527,932</b>	<b>173,262</b>	<b>1,701,194</b>










# El Salvador: Floods



 Affected districts

### People in shelters

-  > 800
-  400-799
-  200-399
-  100-199
-  50-99
-  25-49
-  1-24

The maps used do not imply the expression of any opinion on the part of the International Federation of the Red Cross and Red Crescent Societies or National Societies concerning the legal status of a territory or of its authorities.  
Map data sources: ESRI, DEVINFO, Federation, UNISYS, MDRSV002.mxd