

Emergency appeal

 International Federation
of Red Cross and Red Crescent Societies

Samoa: Earthquake and tsunami

Emergency appeal n° MDRWS001
GLIDE n° 2009-000209-ASM
2009-000210-WSM
26 October 2009

This Revised Emergency Appeal seeks CHF 2,469,064 (USD 2.45 million or EUR 1.63 million) in cash or kind to support the Samoa Red Cross Society in order to assist 625 families (up to 5,000 people) in the tsunami affected area for 18 months.

With contributions received to date, and those in the pipeline, the appeal is fully covered, and no additional support is required.

The estimated number of beneficiaries has reduced from the preliminary appeal due to the fact that initial estimates were based on census figures along the coastline that was thought to have been directly impacted. More comprehensive joint assessments of the impacted area have since been undertaken by Samoa Red Cross Society and verified by subsequent government-led assessments, which indicate the affected population is much reduced. The indirect impact of the tsunami did not spread to adjacent villages as initially thought.

Appeal history:

- A Preliminary Emergency Appeal was launched on 6 October 2009 seeking CHF 2,888,262 (USD 2.8 million or EUR 1.9 million) in cash, kind, or services to support the Samoa Red Cross Society to assist 15,000 beneficiaries (3,000 families) for 18 months.
- On 30 September 2009, CHF 325,134 (USD 313,957 or EUR 215,406) was allocated from the Federation's Disaster Relief Emergency Fund (DREF) to support this operation.

Summary:

The 8.3 magnitude earthquake and subsequent tsunami which struck Samoa on 29 September has had a devastating affect on the Pacific Island community, causing deaths, injuries and severe damage to houses and infrastructure.

Support will be provided in the following sectors: relief, health and care, water and sanitation, shelter, psychosocial support, restoring family links, livelihoods, disaster risk reduction and institutional capacity



Samoa Red Cross, with support from the International Federation and in coordination with other government and non-government actors, provided immediate assistance to affected communities on Upolu island through the distribution of relief items including blankets, jerry cans, tarpaulins and family tents. Staff and volunteers of SRCS also supported community members with the construction of up to 33 temporary shelters to date. Samoa Red Cross.

building.

Partners which have made contributions to this appeal to date include: American Red Cross, Australian Red Cross, British Red Cross/British government, Canadian Red Cross/Canadian government, Danish Red Cross, Irish Red Cross, Japanese Red Cross, Monaco Red Cross, New Zealand Red Cross, Swedish Red Cross/Swedish government, and the government of the Republic of Korea.

The International Federation, on behalf of the Samoa Red Cross Society (SRCS), would like to thank all partners for their generous response to this appeal.

[<click here to view the attached Emergency Appeal Budget;](#)
[here to link to a map of the affected areas;](#) or
[here to view contact details>](#)

The situation

On 29 September 2009, the Pacific tsunami warning centre reported an earthquake measuring a magnitude of 8.3, off American Samoa which generated a Pacific-wide tsunami warning. The epicentre of the quake was located 190 km southwest of American Samoa. Local reports indicate the wave that hit the affected coastline in south Upolu island of Samoa was between three to 11 metres, while the second wave in Pago Pago, in American Samoa, was measured at 1.7 metres.

The official death toll is 143 people (including five missing, presumed dead). Up to 310 people have been treated for injuries, with the majority having been discharged from the hospitals and clinics. Many people are in shock as there has not been anything like this in the living memory of the country.

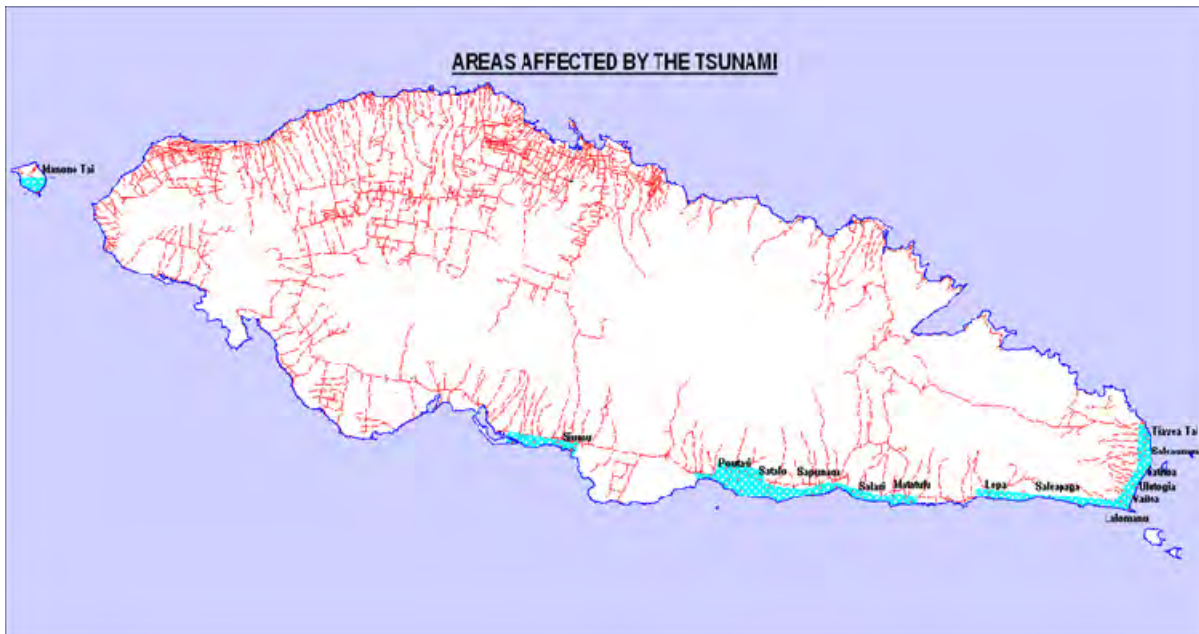


Figure 1: Tsunami affected areas in Upolu Island, Western Samoa. Source: Samoa Water Authority

The area affected by the tsunami is a narrow 40km stretch of coastline on the southeast and eastern corner of Upolu, as well as Manono Island off the west coast, approximately a quarter of the entire Upolu's sub-region. Along this stretch of coastline, most damage in the area was seen in ten villages from Lepa to Salea-aumua. In total, 19 villages were affected between Aleipata and Falealili villages, with wave run-ins reaching 400m inland. As a result, displaced people are now living either on their inland plantations, in temporary shelters, with host families or in the remains of their damaged homes on the coastline. Many affected people have expressed a fear and reluctance to return to the coastline where they were previously living. The average size of households in the Upolu sub-region including the affected areas was 7.7 persons, of which 3.1 were children and 3.7 women. According to the household income and expenditure survey conducted by the government, the villages in the affected areas had the lowest average weekly per capita household expenditure; 23.5 per cent

of households comprising 31.3 per cent of the population had a low weekly expenditure which rests on the poverty line.

According to a report submitted by the Ministry of Agriculture and Fisheries and the Food and Agriculture Organization (FAO), it is estimated that about 10 per cent of subsistence production has been lost in the immediate short-term through the destruction of small livestock, loss of agricultural tools and equipment and the destruction of close-to-household gardens and food trees.

From the beginning of the disaster, the Samoa Red Cross Society conducted a rapid assessment of the affected areas and on the basis of this immediately started distributing their pre-stocked relief items. These included items such as kitchen sets, mosquito nets, blankets, water containers, food, clothes and shelter materials.

After the rapid assessment, two more detailed joint assessments were also completed, one led by the Ministry of Health focusing on water, sanitation and environmental health needs, while the other assessment was focusing on early recovery needs (including shelter) led by the early recovery cluster. The assessments included representatives from the International Federation's field assessment and coordination team (FACT), the United Nations and other non-governmental organizations.

Data from the assessments were collated, geo-referenced and used to produce a plan of action for the government. Data exists from the Ministry of Health's assessment which is being used for the plan of action, although an assessment report has not been written. The early recovery assessment findings were presented on 9 October and the scope of this plan of action covers four key areas of strategic intervention. These are:

- i) resettlement and access to basic social services and infrastructure
- ii) livelihoods
- iii) disaster risk reduction and climate change; and
- iv) environment.

At the same time, there are synergies and links across sectors and strategic interventions. A report of the findings from this assessment is available [upon request](#).

Key findings in this early recovery assessment:

- The affected area has the lowest per capita income in Samoa, resulting in the localized impact being greatly higher than if it had affected other locations. Tourism is particularly important to the area, while agriculture and fisheries have also been badly hit. The total estimated damage is USD 55 million.
- The framework identifies four zones with a total population of 12,403 people and an estimated 5,275 people affected.
- Resettlement and access to basic services includes resettlement of affected populations in-land, roads, power, water and sanitation, education, health and housing.

The overall recommendation to the Government of Samoa for three of the four affected zones is to support the relocation of the affected population to safer areas reducing their exposure to risk, which was a pre-tsunami identified need.

The recommendation is also in line with the preference of the majority of the displaced families who are reluctant to return to living on the coastline in the long-term. Some villagers from Lepa and Saleapaga have already agreed that they will not move back to the coast, but re-establish their village inland. As the cyclone and wet seasons are approaching, the priority needs for these displaced families are in water, sanitation, shelter and livelihoods.

The overall humanitarian assistance is rapidly moving from relief to recovery and the remaining relief needs are primarily in water and sanitation. The emergency shelter needs have largely been met and many families, with assistance of overseas family members, have commenced building transitional shelters in anticipation of the arrival of the wet season in November. However, many families are still without the essential tools to enhance their capacity to rebuild.

Much of the infrastructure (roads, electricity and water supplies) has been restored by the government of Samoa along the coastal road. However, a majority of displaced people further inland are yet to be reached. The Government of Samoa has commenced planning to address these needs in the long-term. While not certain how long this will take to be completed, it is estimated that the task will take at least six months.

The Government has decided to provide financial compensation to families who have lost relatives in the tsunami through the Accident Compensation Corporation.

National context

Most people in Samoa live in villages along the coastal plains and lower hills which while fertile, exposes them to the hazards of cyclones, floods and storm surges. The country operates under a British-based parliamentary system which accommodates local custom.

The economy is dominated by subsistence village agriculture and fisheries. There are about 362 villages in Samoa. A village comprises a group of extended families, **aiga**. Each family is led by a traditional chief, **matai**, who represents the family on the **fono** or village council.

Coordination and partnerships

The Samoa Red Cross Society (SRCS) is supporting the Government of Samoa who is leading the coordination of the early response and has been proactive in facilitating relationships with national and international partners.

On the day of the disaster the SRCS established a relief coordination centre in Lalomanu. The national disaster management office also uses this centre as a base for their distributions.

On 30 September, the International Federation deployed a regional disaster response team (RDRT) and a field assessment coordination team (FACT) to Samoa. Members included specialists in shelter; water and sanitation; restoring family links; logistics, health, psychosocial support, communications, relief; and from the 14 October, livelihoods as well. The team comprised of delegates from Australian Red Cross, British Red Cross, Canadian Red Cross, French Red Cross, New Zealand Red Cross, Tuvalu Red Cross, and from the International Federation's Pacific regional office and the Asia Pacific zone office.

Early on, the SRCS signed a memorandum of understanding with the UNDP agreeing that water tanks and other relief supplies provided by the UNDP would be distributed through the national society. The national disaster management office was activated in response to the disaster and established a national emergency operations centre in Faleata fire station.

Preliminary assessments were completed in a coordinated way, led by the Government of Samoa with support from SRCS, the UN and other agencies. The results of these assessments will determine a prioritized and coordinated plan of action from supporting agencies, including SRCS.

The cluster system was activated by the inter-agency standing committee (IASC) for clusters in education; water, sanitation and hygiene (WASH); health; early recovery; and protection. After some discussion, it was agreed that the emergency shelter cluster was not required due to the scale of this disaster, the small number of actors in this sector and the fact that the emergency shelter needs had largely been met by the SRCS stock distributions.

After a very short time, the lead roles for both the health and WASH clusters were handed over to the pre-existing coordination mechanisms, led by the relevant government department, rather than continuing parallel coordination.

The majority of international relief support was provided by both the New Zealand and Australian governments, particularly in the health sector and with search and rescue. Both New Zealand's Aid and International Development Agency (NZAID) and Australian Agency for International Development (AusAID) have announced contributions of about NZD 6.1 million each (totalling NZD12.2 million or CHF 9.29 million) for long-term infrastructure redevelopment in the tsunami-affected area.

The Japanese International Cooperation Agency (JICA) has sent a team to Samoa to conduct an assessment for reconstruction and rehabilitation.

The UN resident coordinator acknowledged the support from up to 55 agencies in the response to this disaster, both government and non-government organizations as well as the Red Cross Red Crescent Movement.

Red Cross Red Crescent action

The SRCS responded quickly in accordance with the national disaster management plan, as an auxiliary to the Samoan government. In addition to the national disaster management office (NDMO), the SRCS has been the main organization at the forefront of the response to this disaster.

SRCS immediately distributed its disaster preparedness stock including items such as kitchen sets, mosquito nets, blankets, water containers, food, clothes, tarpaulins and tents. An additional 1,000 blankets, 500 collapsible jerry cans (10 litres), 1,000 tarpaulins, 50 family tents, 200 body bags and 100 first aid kit refills were also provided immediately by New Zealand Red Cross. Australian Red Cross also assisted the relief by deploying collapsible jerry cans (10 litres), while Cook Islands Red Cross donated food and clothing.

SRCS volunteers were actively involved from the beginning of the operation and have distributed relief stock to more than 300 families. Volunteer numbers increased to over 200 at the height of the operation and were strongly supported by the local Samoan community who provided their own cars, trucks (with drivers), IT and communications support, food for volunteers and relief stocks.

Psychosocial support for beneficiaries took place during the relief distributions, which provided the effective model of providing direct practical assistance as well as the chance for affected people to discuss their experiences and reflections to empathetic psychosocial support volunteers.

The urgent need for increased distributions of water was identified by the FACT members in coordination with the Samoa Water Authority. On 6 October, SRCS volunteers commenced distributing water to displaced families using two trucks mounted with 5,000-litre inflatable bladders donated by Australian Red Cross and continue to supply water at an average of 20,000 litres per day.

Hygiene promotion has commenced in primary schools that are hosting tsunami-displaced school children and a special six-member SRCS volunteer team undertook awareness-raising activities for the 'Global Handwashing Day' in five schools.

As humanitarian assistance continues to be provided to the affected population, the SRCS operation has been strengthened with the arrival of a livelihoods delegate and the mobilization of an organizational development consultant who will both support SRCS with regard to their longer-term recovery and organizational growth. Other field assessment and coordination team and partner national society members have finalized their mission as the detailed plan of action and revision of the emergency appeal has progressed.



Samoa Red Cross included hygiene promotion in their response to the devastating tsunami which took place on 29 September 2009. Up to five schools were reached through awareness-raising activities in conjunction with "Global Handwashing Day". Samoa Red Cross.

SRCS received support from the local Samoan community in both in-kind and financial contributions. The national society was allocated CHF 325,134 from the International Federation's Disaster Relief Emergency Fund (DREF) to start up the relief and recovery operation as well as NZD 210,000 (approximately CHF 160,000) from New Zealand Red Cross. In addition, Fiji Red Cross supported the national society with more than FJD 10,000 (CHF 5,376). Funds were also raised by the Vanuatu Red Cross, Federated States of Micronesia Red Cross and Solomon Islands Red Cross. The UNFPA provided hygiene kits to the national society while the Latter Day Saints contributed computers, wheelchairs, women hygiene kits and tarpaulins.

Both Australian Red Cross and New Zealand Red Cross launched national appeals, which have raised substantial funds and are likely to be utilized to strengthen existing cooperation activities in disaster preparedness, response, risk reduction and community based health and first aid. This bilateral support was taken into careful consideration with respect to the International Federation's plan of action.

The national society is also in the process of revising its strategic plan to reflect the required changes in the scale and scope of its programmes and in its policies, systems and structure. SRCS will also be revising its overall operational plan. The national society would like all its partners to work through one common plan to ensure a common approach to capacity building. Developing a common monitoring, evaluation and reporting system is also a priority for the national society. The SRCS is planning to host a lessons learned and a planning meeting in December to document learning to date and to present its revised strategy and its overall operation plan.

The needs

This revised appeal takes into account the different assessments that have been conducted in Samoa, including the FACT assessments and recommendations, and the data collected by the FACT working with the SRCS. The related plan of action considers the relief and early recovery needs as well as longer-term recovery and capacity building actions over an 18-month period. In particular, relief and early recovery actions will be undertaken in the sectors of relief, water and sanitation, hygiene promotion, shelter, psychosocial support, livelihood support and restoring family links. The longer-term recovery and capacity building phase will cover volunteer management, staff development, enhancement of SRCS programmes (such as the blood programme, community-based health and first aid, disaster preparedness and disaster risk reduction and training for governance. Replenishment of SRCS relief stock, a contingency planning process and the enhancement of SRCS branches and volunteers capacity to respond to future disaster situations are also considered in this appeal.

The operation

As a result of the unprecedented response to this disaster event, the SRCS, with support from the International Federation, has reviewed the overall needs and actions to be included into their response. This has resulted in modifying the initially planned actions where in some sectors interventions have been reduced while in others some actions have been increased. Based on the analysis of numerous assessments in the impacted area undertaken by SRCS and verified by subsequent government-led assessments undertaken by the Red Cross and others, the initially identified beneficiary numbers which were based on census figures of communities residing along the coastline have been reduced, due to direct impact of the tsunami being more contained and not spreading to adjacent villages as was initially thought.



Samoa Red Cross Society (SRCS) volunteers help load truck with water storage containers and organized donated goods at SRCS headquarters in Apia. Water will be trucked to the southern coast. International Federation

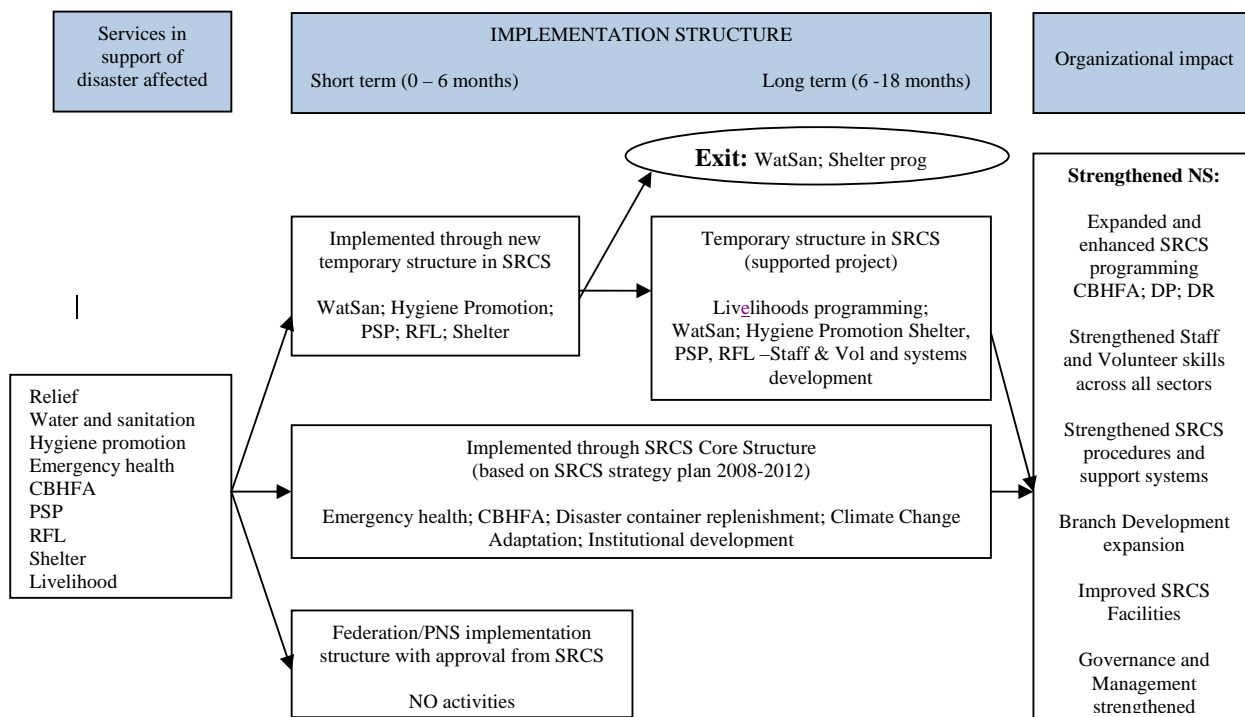
This emergency appeal will focus on supporting the SRCS to provide appropriate and timely response in delivering relief and early recovery assistance to up to 5,000 people (625 families, based on eight people per family) for 18 months. Indirectly, the SRCS will reach more than 12,000 people in the tsunami-affected area, along the coastal area from Lepa to Saleaumua, through some of its interventions such as hygiene promotion and water and sanitation. This plan considers the current capacity of the SRCS as well as the intensified capacity building required to deliver support to beneficiaries from this disaster and the reduction of risk for future disasters in Samoa.

Support in immediate relief will be provided to beneficiaries in the emergency period, covering relief, water and sanitation, hygiene promotion, shelter, psychosocial support and restoring family links. In the recovery period, this emergency appeal will focus on the sectors of water and sanitation, livelihoods, disaster risk reduction and community-based health and first aid. Organizational development and capacity building of the SRCS is a continuous process throughout this plan of action and through the plans of all partner national societies.

This appeal also follows the strategic direction from SRCS' strategic plan 2008 - 2012 in institutional development, community-based health and first aid, disaster preparedness and relief as well as climate change adaptation.

To support this emergency appeal a number of long-term dedicated volunteers will move into paid positions for the duration of the early recovery period, but are unlikely to be financially supported beyond 12 months. Additional staff from SRCS required for the first 12-month period of the recovery operation include three water and sanitation personnel and one each for logistics, livelihoods, community-based health and first aid, disaster risk reduction, finance and administration. These positions will be supported by delegates from the International Federation.

The strategic organizational development framework, including both relief/early recovery and long-term phases proposed for this operation is illustrated below. This framework will be utilized by SRCS leadership to make decisions about programme delivery. This framework has been tested in other relief operations and has proven to be a very useful tool for the national society:



Relief distributions (basic non-food items)

Objective: The needs of up to 5,000 people (625 families) along the affected area (including the districts of Aleipata, Falealili and Manono island) are met over one month, based on assessment results	
Immediate actions	
Expected results	Activities planned
Essential non-food items are provided to up to 625 families in accordance with their identified needs.	<ul style="list-style-type: none"> • Undertake a needs assessment in the affected area to formulate a distribution plan • Develop beneficiary targeting strategy and registration system to deliver intended assistance • Distribute relief supplies from point of dispatch to beneficiary • Monitor and evaluate the relief activities and provide daily reporting on distributions to ensure accountability to the donors

SRCS has provided relief distributions to more than 300 families (click [here](#) for table of relief items distributed up to 17 October 2009). A sub-logistics hub has been established in the grounds of the hospital at Lalomanu from where the relief distributions are made. This unit is approximately 90 minutes drive by truck from Apia. Distributions to 40 locations to date have been made. This includes three villages on Manono Island and families in damaged villages or supported in neighbouring villages in the affected area.

The national disaster management office indicated urgent needs for non-food items, including lanterns, mosquito nets, and hand agricultural tools. Following this call, SRCS has ordered additional relief items, including family tool kits, female hygiene kits and mosquito nets.

The relief phase is expected to be completed by March 2010. Remaining non-food items donated for this operation will be used to replenish SRCS stock for future disasters.

Water, sanitation, and hygiene promotion

Objective: The risk of waterborne and water and sanitation-related diseases has been reduced through the provision of safe water, adequate sanitation and hygiene promotion to 5,000 people (625 families) along the coastal area from Lepa to Saleaumua for six months.	
Immediate actions	
Expected results	Activities planned
Safe water is provided for up to 625 families for an estimated period of six months until damaged water supply systems in the affected area are restored and new systems are established, in coordination with the Samoa Water Authority	<ul style="list-style-type: none"> • Assess the immediate and longer term water supply needs of the population • Distribute jerry cans (two per family) to meet emergency water needs • Provide potable drinking water to households through water trucking for up to three months • Assess the requirement for communal water storage facilities • Procure, distribute, monitor and assist households and communities in the installation of individual rainwater and communal water tanks (and bases and shelters)
Appropriate sanitation, including excreta disposal and solid waste management is provided to approximately 1,700 displaced people in the area between Lalomanu and Saleaumua for six months, in coordination with the Ministry of Health	<ul style="list-style-type: none"> • Assess the immediate need for emergency excreta disposal facilities primarily with the displaced population • Assist families with constructing emergency ventilated improved pit latrines in the target area in accordance with government standards • Use community-based participatory methodologies to design and construct appropriate sanitation facilities and waste management
The health status of the population is improved through behaviour change and hygiene promotion activities	<ul style="list-style-type: none"> • Design a simple programme and conduct emergency hygiene promotion activities in the targeted communities and affected schools through the trained community based health and first aid volunteers • Develop and produce water and sanitation information, education and communication materials for hygiene promotion and education

	<ul style="list-style-type: none"> • Train SRCS staff and volunteers in participatory hygiene promotion methodologies, knowledge of excreta disposal facilities as well as water supply in emergencies • Conduct hygiene promotion activities in conjunction with community based health and first aid
Longer-term actions	
The scope and quality of SRCS water, sanitation and hygiene promotion capacity in emergency response and CBHFA is improved	<ul style="list-style-type: none"> • Train SRCS staff on the water treatment in emergencies equipment, including storage of equipment and ongoing maintenance • Replenish water and sanitation emergency items for SRCS • Assist SRCS with developing a water and sanitation strategy and policy under their health and disaster management strategy • Develop an exit strategy and complete evaluation of the programme

Water, sanitation and hygiene promotion are major needs identified in all assessments conducted in the affected area. SRCS has played a key role to date in meeting the water, sanitation and hygiene promotion needs of the affected families through distribution of drinking water in jerry cans as well as trucking water to the displaced families that have moved inland where there is no water supply available. SRCS-trained community-based health and first aid volunteers are also conducting hygiene promotion sessions in the primary and secondary schools in the affected area to reduce the risk of disease transmission, given the increased number of students that have relocated from schools that were destroyed. This plan focuses on expanding the current capacity of the SRCS in water and sanitation, including recruiting three additional staff to continue to work with the large volunteer base on water and sanitation activities. The plan addresses supplying drinking water to families to meet immediate and intermediate needs, in coordination with the Samoa Water Authority as well as mobilizing SRCS volunteers to assist families with constructing sanitation facilities that can be used for up to six months. SRCS volunteers will also conduct hygiene promotion and water conservation activities in affected schools as well as with families that have moved inland from Lalomanu to Saleaamua.

In addition to this, with the new water and sanitation emergency response equipment that was donated by the Australian Red Cross, the SRCS volunteers and staff will receive training on operation, maintenance and warehousing of the equipment in order to have the capacity to continue to provide emergency water supply support in response to future disasters.

Health and care

Objective: The long-term health of 5,000 people (625 families) of the affected population is improved through community-based health and first aid (CBHFA) activities along the coastal area from Lepa to Saleaamua for six months	
Expected Results	Activities planned
Longer-term actions	
The scope and quality of the SRCS health and care services are improved	<ul style="list-style-type: none"> • SRCS CBHFA staff and volunteers receive additional training in CBHFA • The existing CBHFA programme of SRCS is expanded to incorporate the tsunami-affected population, concurrent with new branch development

There has been no disease outbreak to date. An early warning system is in place and the primary health care system is reporting daily to public health surveillance which is a part of the Ministry of Health. Most of the infrastructure is working and the Ministry of Health has received external support from the governments of New Zealand and Australia.

The core approaches of the Red Cross Red Crescent Movement with regard to the provision of CBHFA and the promotion of safer and healthier lifestyles is ideally situated to the Pacific. Ongoing coordination with the Ministry of Health helps define the role of SRCS staff and volunteers. The national society will have a bigger role to play with regard to longer-term interventions, based on the visibility and relationship developed through the core.

Due to the response of the primary health systems and the support received from the Australian and New Zealand governments to primary health, the SRCS did not undertake activities in this area. In this plan, the SRCS activities will focus on expanding the existing CBHFA programme to incorporate the tsunami-affected

population, concurrent with new branch development. This will also focus on developing the capacity of SRCS CBHFA staff and volunteers to become more proficient in conducting CBHFA programmes.

The CBHFA programme will be closely linked to the hygiene promotion component of the water and sanitation programme and to psychosocial support to ensure an integrated approach.

Psychosocial support (PSP)	
Objective: Address psychosocial needs by providing PSP related relief to volunteers and by engaging in the national coordination and delivery of psychosocial support services in the recovery stages for six months	
Expected results	Activities planned
Psychosocial support is included into the emergency programme	<ul style="list-style-type: none"> • Network and liaison with national and international organizations to coordinate responses to identified psychosocial support needs • Adapt key PSP messages and tools to the Samoan context
Psychosocial support is included into recovery programmes	<ul style="list-style-type: none"> • Develop the skills of a small group of volunteers to provide sensitization on personal support • Identify ways to integrate psychosocial support with ongoing recovery programmes as well as existing SRCS programmes, particularly the Pacific disaster management partnership programme. • Provision of PSP support through individual and group sessions

A brief information sheet has been compiled listing the referral hotline for all counselling and debriefing services. Information on SRCS tracing services was also provided. The information is available in both Samoan and English.

Sensitization (rather than training) has been conducted with approximately 25-30 volunteers with key messages including communication with trauma-affected people and self-care. At least another 25 -30 volunteers will be identified for this further support.

A total of three CBHFA community consultations with affected communities over the next six months are planned. SRCS intends to use puppet shows to deliver psychosocial support messages to the community and entertain children in these areas.

Shelter	
Objective: The emergency shelter needs of up to 4,000 people (500 families) identified through targeted assessments along the coastal area from Lepa to Saleaumua are met with an appropriate planned programme within six months of the tsunami.	
Expected results	Activities planned
Up to 100 families that have relocated inland from the affected coastal area or have severely damaged homes and are staying on the coastal area have emergency shelters	<ul style="list-style-type: none"> • Undertake a needs assessment in the affected area to formulate a distribution plan • Develop beneficiary targeting strategy and registration system to deliver intended assistance. • Distribute emergency shelter items, such as tarpaulins, community tools and tents to beneficiaries according to need • Monitoring, evaluating and reporting on distributions as well as additional needs for longer-term recovery
500 families have basic tools (tool kits) to enable them to enhance their emergency shelters and build safe and adequate outbuildings suited to the cultural, social and climatological conditions in Samoa	<ul style="list-style-type: none"> • Undertake a needs assessment in the affected area to formulate a distribution plan • Develop beneficiary targeting strategy and registration system to deliver intended assistance. • Distribute shelter tools and control supply movements from point of dispatch to delivery to the end user and developing an exit strategy • Train SRCS volunteers and provide safe shelter awareness training in the communities • Monitoring and evaluation, providing reports on shelter progress and tools distributions

The Government of Samoa shelter committee has moved to focus its attention on permanent shelter. The committee has agreed on a single design for 500 permanent houses, which builds on the traditional open

design, with a raised concrete floor and separate enclosed wet bathroom, enhanced with cyclone/earthquake/tsunami engineering. The community of non-governmental organizations are providing commitments to the government on the number of houses they will build, with 100 houses committed so far. Habitat for Humanity has committed labour to build all houses and is working on funding of the material balance. An estimated NZD 12.2 million (CHF 9.29 million) has been donated to the Samoan government by the Australian and New Zealand governments to be used for infrastructure development, although has not yet been committed to specific aspects of the identified recovery plan. Both NZAID and AusAID have indicated that additional funds may be forthcoming based on this building reconstruction plan.

Under this appeal, the International Federation will support SRCS to train volunteers and provide safe shelter awareness training in the communities; to distribute shelter tools and control supply movements from point of dispatch to end user; and to monitor and evaluate the shelter activities and provide reporting on shelter progress and tool distributions. Following on from the distribution of tarpaulins and tents to provide emergency shelter, SRCS will continue to augment emergency shelter needs, particularly with families that are now moving out of their relatives homes. The national society has helped the community build 33 temporary shelters so far and seem to be managing to address needs as they arise.

Restoring family links (RFL)	
Objective: To re-establish contact between families who have been separated by disaster within a month	
Expected results	Activities planned
Families who have been separated are reconnected	<ul style="list-style-type: none"> • Train SRCS volunteers in administration of registering sought persons and conducting local search avenues to locate sought persons, including media • Consultation with local authorities, beneficiaries and international authorities to ascertain RFL needs as well as lists of deceased and missing • Train SRCS staff/volunteers in the field to provide beneficiaries with RFL services of 'Safe & Well Red Cross Messages' and phone calls to inform of health, location, and new contact details • Establishment of an RFL hotline operated by SRCS with notification to the international and domestic public via the SRCS website • Re-contact all enquirers who have registered missing persons/family to ascertain if sought persons have been located

Since the beginning of the operation a total of 70 enquiries to reunite families separated by the disaster have been received: 55 for Samoa and 15 for American Samoa.

Actions undertaken by the SRCS with regard to their RFL activities have included:

- Acquiring a list of the deceased and a list of missing people from the authorities
- Acquiring a list of children housed by the Samoan victim support shelter housing
- Conducted field training with one staff and four volunteers for "Safe & Well Messages and Phone Calls"
- Field visits to displaced persons to offer "Safe & Well Messages & Phone Calls" are expected to be completed within three weeks
- Provided administrative training to two volunteers for registration of sought persons and search avenues to locate them. Moving forward, as the Samoan Police have undertaken village visits and consultation with villagers regarding missing persons, the SRCS has handed over the registration of this task to the authorities.

In addition, the Australian Red Cross has committed to providing RFL training to SRCS staff and volunteers until December 2009, developing capacity through on-the-job training and the experience of this recent event.

Livelihoods	
Objective: Up to 625 families (5,000 beneficiaries) who have lost their pre-tsunami livelihood assets and capabilities, will be assisted in recovery and in building resilience for a period of up to nine months	
Expected results	Activities planned
Selected households will be able to overcome economic insecurities	<ul style="list-style-type: none"> • Develop the capacity of SRCS to deliver a variety of livelihoods initiatives such as cash systems and other recovery initiatives for vulnerable families to reinforce economic and social security • Conduct rapid livelihoods and social mapping of affected area using local volunteers to further define the selection of beneficiaries for distribution of livelihoods resources

	<ul style="list-style-type: none"> • Develop beneficiary selection strategy and registration system to deliver intended assistance • Finalize the modalities and means of providing cash grants and/ or vouchers addressing the immediate needs for the first set of families within the next three months • Provide cash grants and / or vouchers to selected families • Monitor and evaluate the activities
By the end of the operation, SRCS staff and volunteers are provided with relevant on-the-job training skills to carry out all relevant aspects of the recovery programme and are able to transfer this knowledge and experience to other Pacific national societies	<ul style="list-style-type: none"> • Recruit recovery coordinator and livelihood officer for SRCS and enlist a core team of volunteers • Provide training for volunteers to understand and support livelihoods programme • Carry out an integrated participatory assessment which incorporates holistic nature of tsunami-affected household needs in light of their vulnerabilities and capacities for the longer-term • Finalize beneficiary selection group and mechanism for providing additional livelihoods assistance to enhance the food and agriculture production base, replacement of livestock and other livelihood assets • Provide support to identified selected groups and community • Monitor and evaluate the impact of interventions in supporting livelihood recovery of the affected population • Develop an exit strategy • Undertake lessons learnt exercise and share with other Pacific island national societies to support effective disaster preparedness and possible programme interventions

Livelihood activities such as tourism, fishing and craft-making have been impacted, resulting in decreased income generation for some families. Details are included in a joint assessment report that has been presented to the Samoa Government.

The Samoa Red Cross has been strengthened with the arrival of a livelihoods delegate supported by British Red Cross who will support the national society in longer-term recovery. Initial reports have indicated that farming tools have been lost, and home gardens have been damaged, pigs and poultry along with fishing gear and canoes were lost.

Disaster preparedness/ disaster risk reduction (DP/DRR)	
Objective: SRCS branches and volunteers are better prepared to respond to future disasters and the population along the affected area (villages located in Aleipata and Falealili) has reduced its risk to cyclones/earthquakes/tsunamis within the next 18 months	
Expected results	Activities planned
Up to 625 families have access to emergency preparedness information and are informed on the most appropriate actions to take in case of a disaster (cyclone/earthquake/tsunami)	<ul style="list-style-type: none"> • Expand the DRR programme to the affected area through tools such as vulnerability capacity assessments and risk mapping • Implement community level identified initiatives (including early warning systems) • Develop contingency plans • Identify opportunities for further expansion of DRR activities • Conduct evaluation of DRR programme
SRCS is prepared to respond to future disasters with relief stock capacity and storage facilities for up to 250 families, based on identified previous needs and lessons learned	<ul style="list-style-type: none"> • Conduct lessons learned workshop and revise processes accordingly • Replenish SRCS disaster preparedness container stock • Procure two vehicles for the SRCS to increase their response capacity • Refurbish SRCS disaster preparedness facility and training centre • Conduct emergency response team training for SRCS staff and volunteers • Conduct national disaster management training for SRCS headquarters • Conduct training workshop for SRCS staff (logistics/relief/emergency assessment) • SRCS staff attend regional/international trainings (including logistics, RDRT)

The purpose of this component is to build safer communities which are resilient to disasters and are supported by the increased capacity of the SRCS to effectively provide basic relief assistance and reduce risk of the most at risk populations across the country. In line with the SRCS strategic plan 2008 -2012, the objectives of this component are:

- To strengthen the organizational capacity for disaster preparedness in order to empower communities to address and reduce vulnerability
- To empower vulnerable communities to be self-reliant, by consolidating traditional mitigation and response strategies

Climate change adaptation is also included in the SRCS strategic plan and considered in this component, with the objective to increase community knowledge on climate change; identify needs and vulnerabilities in the community and to work with communities that are vulnerable to the impact of climate changes.

Institutional capacity building	
Objective: SRCS has the capacity to operate efficiently and effectively to deliver services to meet the needs of the most vulnerable in accordance with their strategic plan	
Expected results	Activities planned
SRCS mobilization, registration, support and retention system will have been developed to transform spontaneous volunteers into long term ones	<ul style="list-style-type: none"> • Short orientation sessions will be given to all new spontaneous volunteers to explain the principles of the Red Cross Red Crescent Movement and mandates of the components of the Movement • The SRCS volunteer registration system and database will be updated • Groups of spontaneous volunteers will be asked to become regular volunteers • Regular meetings with volunteers will help them to convey information from a community level, and also to receive recognition and collective support when dealing with their difficult roles • A human resource strategy is developed (volunteers and staff selection criteria, participation selection of training, evaluation of volunteers and promotion) based on the Pacific context
A new branch in the tsunami affected area is established and managed by volunteers	<ul style="list-style-type: none"> • A new branch office established in tsunami affected area of Aliepata • Renovation of the SRCS office and support facilities in Lotopa • Volunteers' ideas for establishing a branch in the affected area to respond to community needs in the short, medium and long term will be sought
SRCS systems and procedures will have been strengthened	<ul style="list-style-type: none"> • Existing finance and administration systems will be enhanced to enable efficient recording of rapidly scaled up donations and reporting back to local and international donors
SRCS governance is strengthened to guide the future development of SRCS	<ul style="list-style-type: none"> • Governance workshops will be conducted with SRCS' board and management • Supporting governance to reposition SRCS, revise the policy framework of the national society, and continue to lead the organization through a change process towards longer term strengthening

The International Federation appeal also considers capacity building in SRCS as a long term essential goal of this operation. An organizational development consultant with direct experience in supporting organizational development in emergencies has arrived in Samoa to ensure that SRCS will emerge from this operation stronger and with enhanced capacity than prior to the disaster event.

Youth unemployment is significant in Samoa, estimated at 80 per cent (even more after the tsunami), with unemployed youth between 15 and 29 years of age. The national society has a sound volunteer base among this age group and developing a youth volunteer programme is a priority focus. This includes the development of capacities of youth volunteers; the development of volunteer management strategies to assist with easier facilitation of youth leadership roles and responsibilities; to review the national society's youth policy, and to strengthen promotional activities of volunteerism.

SRCS strategic plan 2008 - 2012 aims to develop the capacity of its members to help the most vulnerable groups and support the process of achieving the characteristics of a well-functioning national society. This appeal will support the SRCS to provide effective leadership and policies to office and branch operations.

The renovation of the SRCS branch at Lotopa is included in the appeal with the aim to generate income for the national society in the long term. The SRCS plans to renovate this property and to lease rooms in the house as student accommodation.

The appeal also includes expansion of the disaster management warehouse facility so that the storage containers currently situated in the head office compound can be relocated to improve the efficiency of distribution. In addition, capacity building efforts will be carried out with the national society in increasing their warehouse management and renovation of current warehouses through this appeal.

Logistics

Logistics support will be provided following International Federation procedures to source and procure relief items needed, and to ensure the efficient and timely delivery of these items for the success of the operation.

Logistics actions are being supported through the close cooperation of SRCS, the regional logistics unit (RLU) in Kuala Lumpur, Australian Red Cross and New Zealand Red Cross. These include:

- Coordinating SRCS programme managers and the RLU for the most timely and cost-efficient sourcing option for the items required for the operation
- Coordinating the mobilization of goods and the reception of incoming goods as part of the response to the tsunami; and as part of the replenishment of SRCS stocks
- Maintaining a close relationship with other key actors in logistics
- Mobilizing pre-positioned stock from either RLU's warehouse in Kuala Lumpur or within the region on a needs basis
- Ensure local procurement of goods and transport follows International Federation standards and is supported if required by RLU in Kuala Lumpur
- Supporting the logistics requirements of programme implementation
- Reviewing and improving storage, warehousing, transport, procurement and distribution procedures within SRCS.

Communications – Advocacy and public information

Ensuring two-way communication with affected communities is a key concern in this operation. A practical analysis of existing information channels is being conducted to identify the most effective method for this two way communication. Bulletin boards have already been identified as an effective and low-tech option.

Donors and supporting national societies will receive information and materials they can use to promote this operation, and communications initiatives over the duration of this operation will help to build the information and public relations capacity of the SRCS for future emergencies.

Domestic and global media interest in this operation has been extremely high, with significant profile having been achieved thus far. Additionally, SRCS have launched their own [website](#) to communicate information on their activities related to the tsunami response as well as to assist in restoring family links.

The steady flow of timely and accurate information between those working in Samoa and other major stakeholders will support the programme objectives of this emergency appeal, increase the profile, funding and other support to the Samoa Red Cross and the International Federation, and provide a foundation on which to advocate in the interests of vulnerable populations.

Capacity of the national society

The Samoa Red Cross Society (SRCS) was established in 1952 as a branch of the New Zealand Red Cross and continued in that capacity until the late 1970s when it ceased to operate. The SRCS was re-established in 1981 and its constitution was adopted in 1983. The national society was recognized by the International Committee of the Red Cross and admitted into the International Federation in 1984. The Samoa Red Cross Act was passed in 1993 to protect the name Red Cross and the distinctive emblem of the Movement.

SRCS's mission states that the organisation provides "humanitarian support to the most vulnerable in the community and helps people prevent, prepare for and respond effectively to emergencies and disasters, through services that are in accordance with the Fundamental Principles of the RCRC Movement".

The national society's leadership is in the process of updating its strategy (2008-2012) to reflect the changes required in the scale and scope of its programmes and in its organizational policies, systems and structures.

The headquarters of the SRCS is based in the capital Apia, which is situated on Upolu Island. SRCS has one branch located on the island of Savai'i which is currently inactive. While the SRCS is able to extend its activities throughout most of the country, the leadership is considering expanding branch coverage, especially in the area affected by this disaster. The SRCS has six fully stocked relief depots evenly distributed throughout the country.

Membership is classified as active, subscribing and honorary. There are a small number of subscribing members, however, non-financial membership extends throughout the country and volunteers can be relied upon to come forward in time of emergencies as demonstrated over the last weeks.

Before the earthquake, the SRCS had 20 permanent active volunteers and eight staff including the Secretary General, health coordinator, finance and administration officer, and officers working in the blood, HIV, disaster management, youth and dissemination programmes. A much larger number of volunteers (over 200) can be called upon during times of emergency.

Approximately 25 percent of the national society's expenditure is raised locally. The remainder of financial resources come from international partners including the International Federation, ICRC, New Zealand Red Cross and the Australian Red Cross.

The national disaster plan and the National Disaster Act acknowledge SRCS's role in disaster preparedness, relief and the tracing of missing persons. The national society has a memorandum of understanding with, and receives financial support from, the Ministry of Health in the area of voluntary non-remunerated blood donor recruitment. SRCS has a register of 2,000 blood donors. The SRCS is the only recognized provider of first aid in the country as mandated by the 2002 National Occupation Health and Safety Act. Approximately 150 first aid training courses for 3,000 trainees are delivered by the SRCS on an annual basis.

Capacity of the International Federation

The International Federation deployed an eight-person FACT and RDRT with expertise in water and sanitation; psychosocial support; shelter; restoring family links; relief; recovery, media and communications, and logistics. The Pacific regional health delegate was also deployed for one week to support ongoing operations. An organizational development consultant, a livelihoods delegate and a regional disaster management manager have been deployed to Samoa to support SRCS in the transition from the emergency phase to the recovery phase. Additionally, a recovery coordinator, a water and sanitation delegate and a finance and administration delegate will arrive in Samoa soon to support this operation over the next six months.

The International Federation's Pacific regional office in Suva is coordinating regionally the significant support that has already been provided for the operation by partner national societies within the region. The regional office is facilitating regular updates and meetings with partner national societies to keep them informed on the progress of the operation and further support requirements. The International Federation's disaster management unit in Kuala Lumpur, Malaysia is providing considerable surge capacity to the regional office in coordination and is managing the international aspects of the operation.

Budget summary

See attached budget for details.

Yasemin Aysan
Under Secretary General
Disaster Response and Early Recovery Division

Bekele Geleta
Secretary General

How we work

All International Federation assistance seeks to adhere to the Code of Conduct for the International Red Cross and Red Crescent Movement and Non-Governmental Organizations (NGO's) in Disaster Relief and is committed to the Humanitarian Charter and Minimum Standards in Disaster Response (Sphere) in delivering assistance to the most vulnerable.

The International Federation's activities are aligned with its Global Agenda, which sets out four broad goals to meet the Federation's mission to "improve the lives of vulnerable people by mobilizing the power of humanity".

Global Agenda Goals:

- Reduce the numbers of deaths, injuries and impact from disasters.
- Reduce the number of deaths, illnesses and impact from diseases and public health emergencies.
- Increase local community, civil society and Red Cross Red Crescent capacity to address the most urgent situations of vulnerability.
- Reduce intolerance, discrimination and social exclusion and promote respect for diversity and human dignity.

Contact information

For further information specifically related to this operation please contact:

- Samoa: Samoa Red Cross Society, Ms. Tautala Mauala, Secretary General, phone: +68523686; email: samoaredcross@samoaws

Pacific Regional Office for the International Federation, Suva:

- Aurelia Balpe, Head of Pacific Regional Office, phone: +679 331 1855; email: aurelia.balpe@ifrc.org
- Ruth Lane, Regional Disaster Risk Reduction Delegate, phone: +679 331 1855; email: ruth.lane@ifrc.org

Federation Asia Pacific zone office, Kuala Lumpur:

- Daniel Bolaños González, operations coordinator Phone: +603 9207 5728, mobile: +6012 2837305, email: daniel.bolanos@ifrc.org
- Penny Elghady, resource mobilization and PMER coordinator, phone: +603 9207 5775, fax: +603 2161 0670, email: penny.elghady@ifrc.org
- Please send all pledges of funding to zonerm.asiapacific@ifrc.org
- Jeremy Francis, regional logistics coordinator, phone: +6012 298 9752, fax: +60 3 2168 8573, email: jeremy.francis@ifrc.org
- Jason Smith, communications manager, mobile: +6012 387 0829, fax: +603 2161 0670, email: Jason.smith@ifrc.org

<Emergency Appeal budget, annex and map below; click here to return to the title page>

APPEAL BUDGET SUMMARY

Annex 1

Samoa: Earthquake and Tsunami

MDRWS001

	ORIGINAL	REVISED	VARIANCE
<u>RELIEF NEEDS</u>			
Shelter	192,550	48,500	-144,050
Construction Materials		118,000	118,000
Clothing & Textiles	78,775	26,650	-52,125
Water & Sanitation	270,125	528,905	258,780
Medical & First Aid	48,500	43,908	-4,592
Teaching Materials	135,000	15,000	-120,000
Utensils & Tools	108,075	48,987	-59,088
Other Supplies & Services	785,700	304,000	-481,700
Total Relief Needs	1,618,725	1,133,950	-484,775
<u>CAPITAL EQUIPMENT</u>			
Vehicles Purchase	80,000	80,000	0
Computers & Telecom Equipment	10,000	12,500	2,500
Office/Household Furniture & Equip.		20,000	20,000
<u>TRANSPORT, STORAGE & VEHICLES</u>			
Storage - Warehouse	15,000	80,000	65,000
Distribution & Monitoring	100,000	21,600	-78,400
Transport & Vehicles Costs		58,800	58,800
<u>PERSONNEL</u>			
International Staff	528,000	426,000	-102,000
Regionally Deployed Staff	209,000	24,150	-184,850
National Staff	5,400		-5,400
National Society Staff	5,400	66,075	60,675
Consultants	10,000	29,000	19,000
<u>WORKSHOPS & TRAINING</u>			
Workshops & Training		147,000	147,000
<u>GENERAL EXPENSES</u>			
Travel	5,000	45,000	40,000
Information & Public Relations	10,000	38,000	28,000
Office running costs	48,000	86,500	38,500
Communication Costs	6,000		-6,000
Professional Fees	20,000	40,000	20,000
Other General Expenses	30,000		-30,000
<u>PROGRAMME SUPPORT</u>			
Programme Support - PSR (6.5% of total)	187,737	160,489	-27,248
Total Operational Needs	1,269,537	1,335,114	65,577
Total Appeal Budget (Cash & Kind)	2,888,262	2,469,064	-419,198

Items distributed as of 17 October 2009

Shelter & Bedding

Tarpaulins	1135
Tent	48
Blankets	1206
Sheets (set)	65
Mosquito Nets	166
Lanterns	98
Candles (bundle)	4
Torch	27
Mats	44
Pillows	140

Clothing

Childrens Clothes	9
Baby clothes (box)	8
Towles (indiv)	90
Sandals (box)	64
Sandals (pairs)	69
Shoes (pair)	124

Hygiene & Personal Care

Soap (pc)	148
Toothbrushes (each)	27
Daipers (box)	7
Disinfectant (box)	13
Newborn Kits	110
Toys (individ)	28
School Kit	4
Heavy Duty Gloves (pr)	12
Examination Gloves (pair)	91
Mosquito Coils (pack)	75

Water

Boxes H2O	719
Containers H2O	1373
Water Bottles	51
Water Tank	27
Clothes (Sack/Box)	1868
Shirts/Blouses	265

Food / Cooking

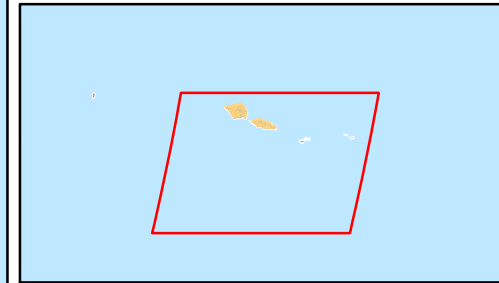
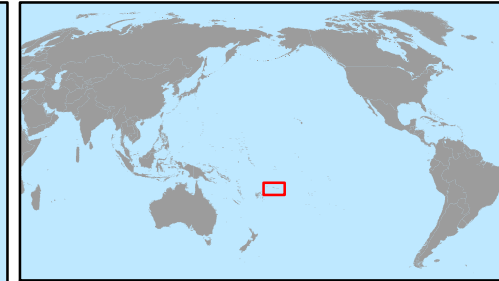
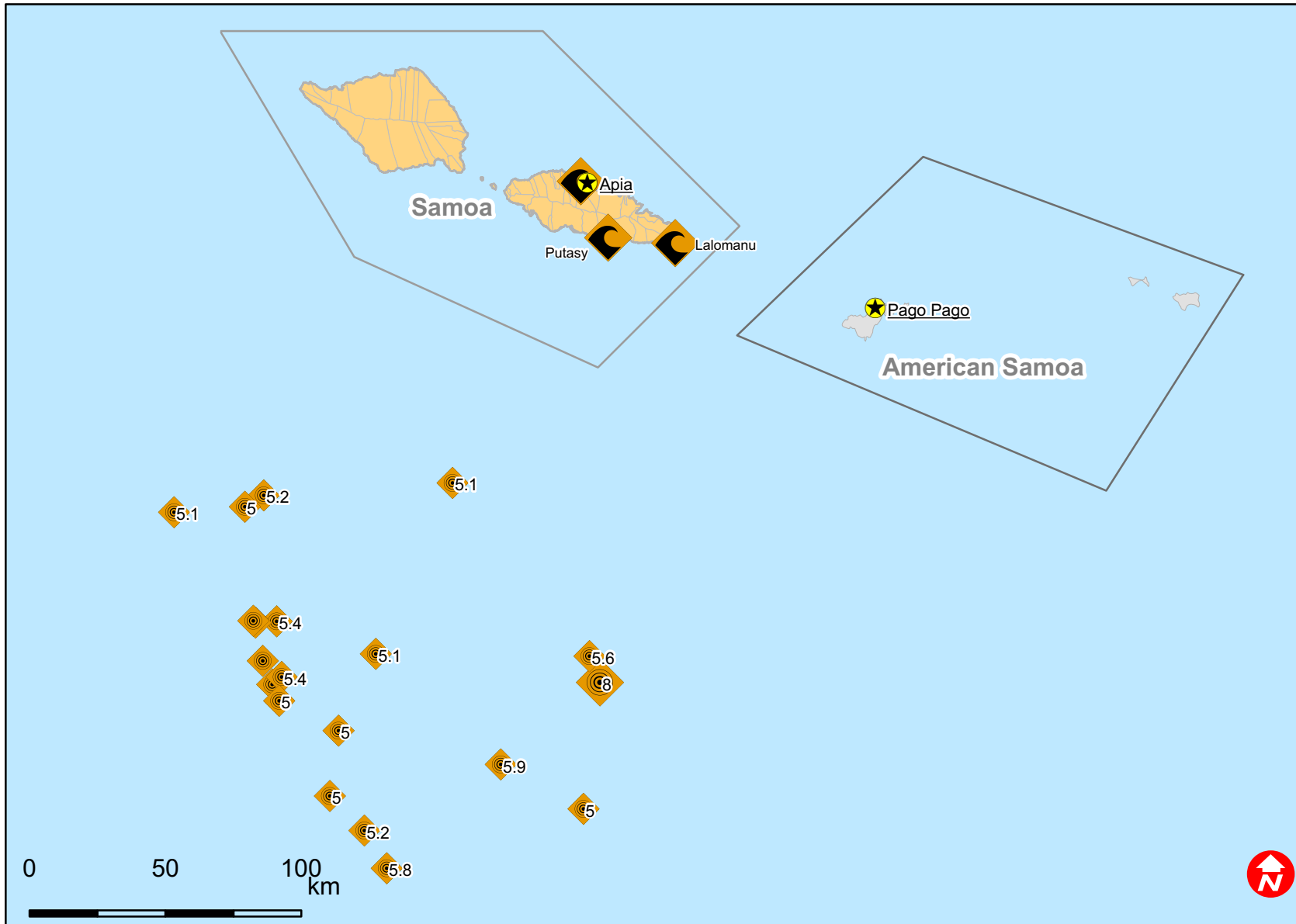
Noodles (box)	161
Tinned Fish (Box)	130
Noodles (individual)	230
Flour	9
Biscuits (Box)	133
Onions (10lbs)	24
Potatoes (10lbs)	88
Cups (doz)	28
Plates (doz)	29
Plates (box)	13
Utensil/sets	89
Cooking sets	392
Kerosene Stove	1
Milk	11
Butter	12
Sugar (box)	8
Coffee/Tea	79
Bananas (box)	4
Snacks (box)	10
Tinned Spaghetti/baked beans (box)	63
Mixed tins (box)	14
Matches (box)	42
Cocoa (packets)	235
Collapsible Water Containers	35
Shower to Shower Powders (box)	8
Mouthwash (box)	14
Tinned Spaghetti/baked beans (cans)	9
Body Wash (bottles)	33
Soap/Handwash (box)	4

Other




Air NZ Gift Bag	76
Masks	10
Umbrella (BOC)	9
Rope	36
Tool Kits	4
Rain Coats	10
ANZ Bags	70
Jerry Cans	75
Hammer	2
Shovel	5



Samoa: Tsunami



Earthquakes

-  Between 5 and 7.9
-  8 and more
-  Area affected by tsunami