

DREF operation



International Federation
of Red Cross and Red Crescent Societies

Cameroon: Measles in the Chadian refugee camp at Langui

DREF operation n° MDRCM008
GLIDE n° EP-2010-000022-
CMR
19 February, 2010

The International Federation's Disaster Relief Emergency Fund (DREF) is a source of un-earmarked money created by the Federation in 1985 to ensure that immediate financial support is available for Red Cross and Red Crescent response to emergencies. The DREF is a vital part of the International Federation's disaster response system and increases the ability of national societies to respond to disasters.

CHF 50,811 (USD 47,213 or EUR 34,638) has been allocated from the Federation's Disaster Relief Emergency Fund (DREF) to support Cameroon Red Cross Society in delivering immediate assistance to some 16,561 beneficiaries. Unearmarked funds to repay DREF are encouraged.

Summary: About 30,000 Chadian refugees arrived in Cameroon in early 2008 and were accommodated in a refugee camp at Langui in Northern Cameroon. Today, most of them have returned to their native Chad. But about 3,660 refugees are still in the Langui camp. Since 25 January 2010, 3 cases of measles have been recorded within the camp. The Cameroon Red Cross Society that has been managing the camp has intensified epidemiological surveillance. Red Cross teams within the camp have also been trained on how to identify and manage measles cases. The National Society intends to assist the Cameroon Ministry of Health in organizing a measles immunization campaign within the Langui camp and in four surrounding health zones to help stop the spread of the disease.



This operation is expected to be implemented over one month, and will therefore be completed by 31 March, 2010; a Final Report will be made available three months after the end of the operation (by June, 2010).

[<click here for the DREF budget, here for contact details, or here to view the map of the affected area>](#)

The situation

About 30,000 Chadian refugees arrived in Cameroon in early 2008 and were accommodated in a camp at Langui, Northern Cameroon. Today, most of them have returned to their native Chad, while about 3,660 refugees still remain in the Langui camp. On 25 January 2010, Cameroon Red Cross volunteers who have been managing the camp discovered a 15-month old child showing signs similar to those of measles within the camp, precisely in bloc 3. The child was then conducted to the health post of the camp where the medical team on duty confirmed that the signs (skin rashes, catarrh, *Koplik* signs, bubbling rales) were those of measles. The health team then organized an investigation within the camp and realized that the mother of the child had just received a while ago her cousin who came from Ndjamena with her own child showing the same signs. That cousin had left the camp three weeks before the disease was discovered. Since she was not a refugee, and although she saw the signs on the skin of her child, that cousin did not deem it useful to take her child to the health post of the camp as the child was playing and enjoying himself normally.

Moreover, the investigation team also discovered that the last dose of vaccine administered to the 15-month old child was DTC III and that the mother had misplaced the child's vaccination record. It is also believed that the child failed to be administered Rouvax at 9 months as the mother had left the camp at the time this vaccine was being administered. When she returned to the camp, she acknowledged the disappearance of the child's vaccination record, but told the relay agent that the child had taken all due vaccines. This information was not properly relayed to the health team. Once it was confirmed that the child was suffering from measles, he was referred to the Pitoa district hospital where he is presently isolated and receiving proper medical attention. This case has been registered at the Pitoa district hospital, and a notification form has been filled and sent to the North Regional Health Delegation and to the *Centre Pasteur du Cameroun*, together with a sample for confirmation. On 28 January, 2010 a new case of measles was discovered within the camp and is currently being monitored at the Pitoa district hospital. This second case is a 22-month old child, also from bloc 3 of the camp like the first case. On 10 February 2010, a third case was discovered within the camp.

Coordination and partnerships

Red Cross staff at the Langui camp immediately contacted the health authorities of the district, and it has been decided that action will be taken as soon as possible. It is planned to vaccinate all the children aged from 6 to 59 months in the camp and in four surrounding localities this week. The immunization campaign is planned for six days. A total of 19,200 doses of vaccines have already arrived in Garoua on 12 February 2010. The Red Cross, UNHCR, WHO and UNICEF are already in the field joining their efforts to make things move.

Red Cross and Red Crescent action

The Langui refugee camp is presently managed by the Cameroon Red Cross Society (CRCS). Immediately after the first case of measles was declared, Red Cross volunteers intensified epidemiological surveillance within the camp to make sure that all suspected cases are properly managed. The health staff and the social and community sectors personnel in Langui have been trained on how to identify the signs and symptoms of measles.

The needs

Selection of people to be reached: The children aged from 0 to 59 months are mainly concerned with measles. They will thus be the targeted beneficiaries of this operation, and the need will be to vaccinate all of them to stop the spread of the disease in the affected localities.

The proposed operation

Emergency health

Objective: To contribute to improving the health conditions of 16,561 beneficiaries through mass mobilization during the anti-measles immunization campaign organized by the Ministry of Health in Langui/Pitoa.

Expected results	Activities planned
------------------	--------------------

<p>The populations are effectively and efficiently mobilized in Langui and in the four surrounding health zones of Pitoa for the success of the immunization campaign organized by the Cameroon's Ministry of Health.</p>	<ul style="list-style-type: none"> • Participating in the coordination meetings of the campaign (Federation and Cameroon Red Cross Society); • Recruiting and training 20 supervisors (coaches); • Recruiting and training 180 volunteers; • Dispatching volunteers in all targeted subdivisions/neighbourhoods; • Mass sensitization, door-to-door sensitization, focus groups sensitization (talks and discussions) with educative aids two days before the campaign and during immunization; • Directing parents to immunization sites; • Detecting post injection allergic reactions; • Participating in the final evaluation of the campaign.
---------------------------------------------------------------------------------------------------------------------------------------------------------------------------------------------------------------------------	----------------------------------------------------------------------------------------------------------------------------------------------------------------------------------------------------------------------------------------------------------------------------------------------------------------------------------------------------------------------------------------------------------------------------------------------------------------------------------------------------------------------------------------------------------------------------------------------------------------------------------------------------------------------------------------------------------------------------------

BUDGET SUMMARY

RELIEF NEEDS

Shelter	
Construction Materials	
Clothing & Textiles	
Food	
Seeds & Plants	
Water & Sanitation	233
Medical & First Aid	233
Teaching Materials	5,000
Utensils & Tools	
Other Supplies & Services	
Total Relief Needs	5,465

CAPITAL EQUIPMENT

Land & Buildings
Vehicles Purchase
Computers & Telecom Equipment
Office/Household Furniture & Equip.
Medical Equipment
Other Machinery & Equipment

TRANSPORT, STORAGE & VEHICLES

Storage - Warehouse	
Distribution & Monitoring	
Transport & Vehicles Costs	12,638

PERSONNEL

International Staff	
Regionally Deployed Staff	
National Staff	
National Society Staff	15,628
Consultants	

WORKSHOPS & TRAINING

Workshops & Training 4,977

Monitoring and evaluation

GENERAL EXPENSES

Travel

Information & Public Relations

Office running costs 6,242

Communication Costs 2,326

Professional Fees

Financial Charges 233

Other General Expenses

PROGRAMME SUPPORT

Programme Support - PSR 3,303

Total Operational Needs 45,345

Total DREF Budget (Cash & Kind) 50,811

How we work

All International Federation assistance seeks to adhere to the [Code of Conduct for the International Red Cross and Red Crescent Movement and Non-Governmental Organizations \(NGO's\) in Disaster Relief](#) and the [Humanitarian Charter and Minimum Standards in Disaster Response \(Sphere\)](#) in delivering assistance to the most vulnerable.

The International Federation's vision is to inspire, encourage, facilitate and promote at all times all forms of humanitarian activities by National Societies, with a view to preventing and alleviating human suffering, and thereby contributing to the maintenance and promotion of human dignity and peace in the world.

The International Federation's work is guided by [Strategy 2020](#) which puts forward three strategic aims:

- Save lives, protect livelihoods, and strengthen recovery from disaster and crises.
- Enable healthy and safe living.
- Promote social inclusion and a culture of non-violence and peace.

Contact information

For further information specifically related to this operation please contact:

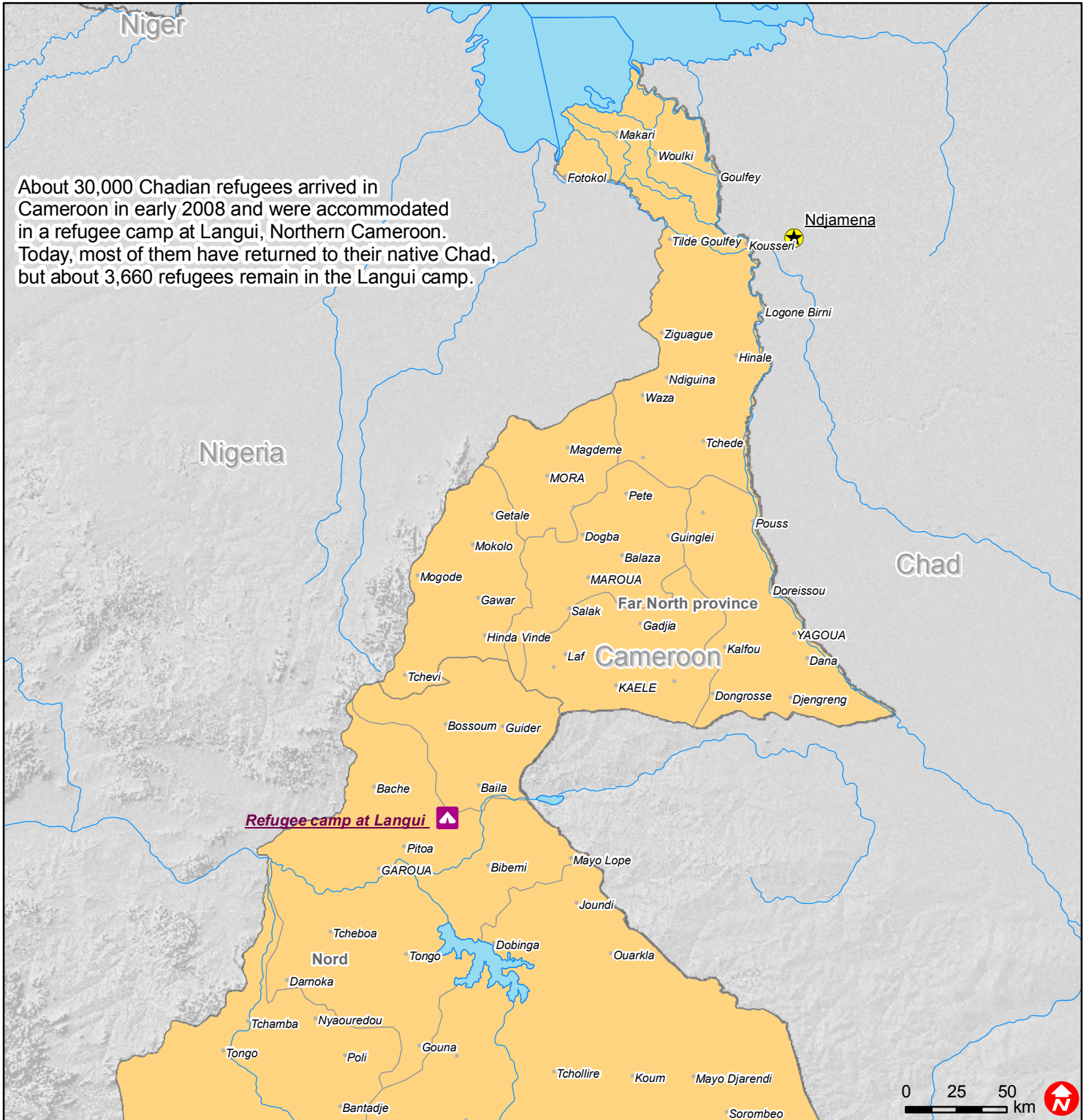
- In **Cameroon**: Nicolas Mbako, Secretary General, Cameroon Red Cross, telephone (Office): + 237 22 22 41 77; email: cameroon_redcross@yahoo.fr, nicombako2002@yahoo.fr
- In **Central Africa**: Pierre Kana, Acting Regional Representative; email: pierre.kana@ifrc.org; telephone (Office): +237 22 21 74 37, (Mobile): +237 77 09 11 38
- In **Southern Africa**: Alasan Senghore, Director for Africa Zone, Johannesburg, email: alasan.senghore@ifrc.org; phone: +27 11 303 9700; mobile: +27 71 872 5111; fax +27 11 884 0230
- In **Geneva**: Christine South, Acting Operations Coordinator for Africa; phone: +41 22 730 4529 (direct) Mobile: +41 79 308 98 24; Fax: +41 22 733 03 95; email: christine.south@ifrc.org

[<DREF budget and map below; click here to return to the title page>](#)



Cameroon: Measles

About 30,000 Chadian refugees arrived in Cameroon in early 2008 and were accommodated in a refugee camp at Langui, Northern Cameroon. Today, most of them have returned to their native Chad, but about 3,660 refugees remain in the Langui camp.



- Capitals
- Refugee camp
- Cities
- Rivers
- Lakes
- Regions