

# DREF operation



International Federation  
of Red Cross and Red Crescent Societies

## Kenya: Floods 2010

DREF operation n° MDRKE011

GLIDE n° FL-2010-000003-KEN

6 January 2010

The International Federation's Disaster Relief Emergency Fund (DREF) is a source of un-earmarked money created by the Federation in 1985 to ensure that immediate financial support is available for Red Cross and Red Crescent response to emergencies. The DREF is a vital part of the International Federation's disaster response system and increases the ability of national societies to respond to disasters.

**CHF 432,589 (USD 415,950 or EUR 292,289) has been allocated from the Federation's Disaster Relief Emergency Fund (DREF) to support the National Society in delivering immediate assistance to some 30,000 people. Unearmarked funds to repay DREF are encouraged.**

**Summary:** The predicted El Nino rains that commenced with the onset of 2009 short rains season have resulted in destruction of property, loss of lives and displacement of hundreds of people in several parts of the country affecting populations, some of who have not recovered from effects of drought.

The Kenya Red Cross Society (KRCS), through this Disaster Relief Emergency Fund seeks to assist 30,000 persons affected by floods for a period of one month, through provision of food and non-food items (NFI), search and rescue services, health, water and sanitation services to combat possible disease outbreaks.

The Kenya Red Cross Society has responded and assisted more than 8,580 people affected by floods with 1,430 non-food items and dispatched 8MT of food to various districts. This operation is expected to be implemented over a period of one month, and is expected to be completed by 4 February 2010 and a Final Report made available three months after the operation.

[<click here for the DREF budget, here for contact details or here to view the map of the affected area>](#)



*Displaced households salvaging the remains of their households items after floods pounded Naivasha area of Rift valley Province in Kenya.  
PHOTO/KRCS*

## The situation

Exceptional heavy rains within the last few days have caused massive flooding in low lying and poorly drained areas in North Rift, South Rift, Nyanza and other parts of the country.

The consequences include deaths, displacement of populations and destruction of farmlands and infrastructure in Turkana, Koibatek, Marigat, Mogotio, Nyando and Narok. The forecast for the next seven days in the North Western districts and the Lake Victoria basin will experience afternoon and night showers and/or thunderstorms<sup>1</sup>. This is likely to exacerbate flooding along the floor of the Rift Valley and Lake Region in areas that are low lying.

Kenya has experienced El Nino and La Nina cycles, with which the floods and drought cycles are closely linked. Based on information availed by the Climate Prediction and Application Centre (ICPAC) at the Greater Horn of Africa Climate Outlook Forum (GHACOF) organized in Kenya (August 2009), the country was therefore expected to receive higher than normal rainfall in the period corresponding to short rains-between October and January 2010.

Those affected and displaced by the floods are part of communities still experiencing heightened food insecurity following the prolonged drought that affected an estimated 3.8 million people in pastoral, agro pastoral and marginal agricultural areas.

Experts estimate that the current situation is not as bad as the El Niño floods of 1997 that affected all districts of the country simultaneously, therefore the number of households likely to be displaced and/or affected by floods may be slightly lower than those recorded in 1997.

Prior to the current floods, the KRCS has been distributing food to 1,119,427 beneficiaries in 13 districts under the Protracted Relief and Recovery Operation (PRRO) in collaboration with the Government of Kenya (GoK) and the World Food Programme (WFP). The number of vulnerable households is however expected to increase in areas affected by floods.

## Floods and Population Displacements

### North Rift

A total of four districts have been severely affected by floods in the North Rift Region, following the heavy rains experienced over the past two weeks.

In Turkana East District, at least 20,000 people have been affected by floods following heavy rains received in the area, with devastating impact on livestock, farms, infrastructure and households. Katilu and Nakwamoru irrigation schemes are the worst hit, with floods washing away sorghum and maize crops. Five people have been confirmed dead. Some 800 acres of food crops have been destroyed and five bridges washed away, 6,664 houses destroyed, two schools destroyed and two health centres damaged. The livestock deaths include sheep and/or goats (4,362), cattle (235), donkeys (60) and camels (351).

In East Pokot District, River Nginyang has burst its banks and residents in downstream areas such as Chemolingot have been advised to move to higher grounds.

In West Pokot District floods have affected more than 160 households in Kongelai and destroyed 60 houses. The floods also have cut off the main Kenya - Sudan road. In Marigat area, more than 400 households have been affected by floods.

### South Rift

Floods have been reported in three districts in South Rift Region; Narok, Naivasha and Kajiado. Naivasha has been experiencing flash foods as a result of heavy rains which started on 27 December 2009. The most affected areas are Kikopey in Gilgil and Moindabi in Naivasha, with 150 households (509 people) being affected. Narok District was hit by heavy rains from Oloipito highlands that affected 75 households and displaced 60 households. At least four deaths were reported, 3 in Kajiado and 1 in Narok.

Floods have also caused havoc in Koibatek, Mogotio and Rongai districts, affecting 136 households.

---

<sup>1</sup> Kenya meteorological Department forecast.

## **Western Kenya**

On 2 January 2010, various districts in Western Kenya experienced heavy rains that increased the water levels, causing floods across the region.

In Lower Nyakach, Nyando District, 250 households have been displaced in eight villages. At least 1,674 people are at risk of being displaced by floods in the district. Some 47 households have been evacuated to safety and are camping at St Alloys Primary School. In Nyando Division, three villages have been flooded, with 56 households in Nyakon sub-location and 24 households in Ayweyo sub-location being affected. A school in Nyando division is marooned – Miruka primary school has been marooned by water from Atoyien River. Two latrines in the school have been destroyed.

## **Lower Eastern**

At least six households have been displaced in Mutomo in Kitui District. In Kajiado North, three children were swept by raging flood waters.

## **Nairobi**

Thunderstorm, heavy rains and winds experienced on 22 December 2009 caused floods in the Central Business District (CBD), Mukuru slums, Kibera slums, Mathare slums and Mitumba village in South C. In Kibera, over 60 households were destroyed, strong winds blew off roofs of 33 houses in Makadara, felled own trees in parts Nairobi including Mombasa road, Valley road, Uhuru highway and Haille Selassie avenue. At least two vehicles were damaged in the city. Four people lost their lives and two others were injured.

## **Health and Nutrition**

The areas currently experiencing floods include Turkana and Pokot districts that reported outbreaks of cholera and other diarrhoeal diseases as a result of acute water shortage caused by persistent dry spells and seasons of failed rains. The current floods have caused contamination of water sources following the collapse and/or caving in and overflowing of latrines. This situation is expected to further sustain transmission of cholera and other diarrhoeal diseases especially among the communities displaced by floods and without access to safe water and adequate sanitation facilities.

In mid November 2009, KRCS responded to a cholera outbreak in East Baringo District that claimed more than a dozen lives. The most affected areas were Lomelo, Kapedo, Silale and Nasorot. Hundreds of patients were attended to in various medical facilities at Chemolingot District Hospital, Kapedo Health Centre and Riongo Dispensary and clinics set up by KRCS. The current floods are likely to exacerbate the epidemic situation in the affected districts.

The El Niño cycle is also associated with increased risks of diseases transmitted by mosquitoes and other vectors, including malaria, dengue fever and Rift Valley fever. In 1997 and 2006 El Nino seasons, the Rift Valley Fever (RVF) caused major outbreaks in livestock and human populations, causing widespread panic, loss of livelihood to pastoralist communities due to livestock deaths, strained health care due to increased morbidity and loss of human lives. A recur of RVF is expected during this El Nino season, and this calls for adequate preparedness measures.

## **Water and Sanitation**

Due to displacement of people and damage to relevant infrastructure in the affected areas, access to safe water and adequate sanitation facilities has been compromised. Some of the effects that have come about as a result of the floods include collapsed latrines in parts of West Kenya Region where hundreds of latrines have collapsed thereby contaminating water sources. Poor sanitation in Turkana districts is expected to compromise on the quality of drinking water following the current heavy floods.

## **Coordination and Partnerships**

The Kenya Red Cross Society is a member of Kenya Food Security Group, which is the main organ for coordination of food security matters. The National Society co-chairs the Rapid-Onset Disaster Committee with the Office of the President. The Committee is a body that also comprises International Non Governmental Organizations (INGOs), United Nations agencies and Government ministries.

The KRCS in partnership with Government of Kenya and the World Food Programme is providing food aid under the Protracted Relief and Recovery Operation (PRRO) targeting 2.6 Million people. The KRCS is serving 13 districts under PRRO programme with 1,196,495 beneficiaries in the unified food pipeline which

is 35 percent of the total food aid beneficiaries of the GoK and/or WFP pipeline. In addition, the KRCS has working Memorandum of Understanding with United Nations Children's Fund (UNICEF), World Health Organization (WHO) and United Nations Population Fund (UNFPA) which addresses the needs of communities in emergencies.

During emergencies the KRCS holds regular briefings and updates with Red Cross Red Crescent movement partners including Partner National Societies, The International Committee of the Red Cross and the International Federation of the Red Cross Red Crescent Societies. The Eastern Africa Regional office secretariat provides technical support. The KRCS will work with Partner National Societies that are currently working in the flood affected regions.

The Kenya Red Cross Society has built up its preparedness and response capacity from challenges and experiences of past disaster operations including floods, drought and the 2007 to 2008 post election violence. All mitigation programmes are designed with sufficient consultation at community level, using and enhancing community structures where possible, and ensuring an equal representation of men and women at decision-making bodies.

The Kenya Red Cross Society Headquarters, with the support of its volunteers and Branch staff across the country will coordinate the floods operation activities, including distribution of food and delivery of relief items to affected populations. The National Society has been involved in several similar operations in the recent years, as the leading humanitarian agency in Kenya, mandated to coordinate humanitarian response during disasters such as floods and droughts in parts of the country.

The KRCS staff and volunteers are currently working closely with the District Commissioner's office, Arid Lands Resource Management Project (ALRMP) and Government line ministries in registration of flood victims and holding discussions on public health interventions to avoid possible disease outbreaks. The Kenya Red Cross Society is actively involved in mobilizing other stakeholders in the flood affected areas.

## **Red Cross and Red Crescent Action**

The Kenya Red Cross Society staff and volunteers are in close contact with local elders and Government line ministries in conducting assessments to establish extent of damage and number of people affected by the floods. The National Society has so far provided NFI kits to 730 households. The NFIs were distributed as follows; 150 households in Mogotio, 150 in Naivasha, 30 in Narok and 400 in Marigat. Another consignment of 700 NFI kits has been dispatched to Turkana districts.

Some 8MT of food have been dispatched to Mogotio and Rongai districts. The National Society is currently monitoring the rainfall through operational links with the Kenya Meteorological Department. The National Society currently has disaster response teams on standby in various parts of the country.

## **The Needs**

### **Relief**

Priority needs include distribution of relief food and non food items to flood affected populations whose houses have been destroyed and lack access to basic facilities, and whose livelihoods have not recovered following prolonged drought. The KRCS will also work with other response teams in providing search and rescue services by using air and boat rescue operations to reach affected populations. The KRCS intends to provide basic search and rescue equipment and protective gear for its response teams to ensure speedy and effective response.

### **Emergency Health and Care**

The country's health care system is expected to be seriously affected by the effects of floods, population displacement, destruction of physical infrastructure and the expected increase in morbidity, injuries, displacements and deaths. This will stretch the available resources beyond manageable limits and is expected to ground health care operations. With the expected epidemics including malaria, RVF, cholera and dysentery, support to health service delivery to affected populations will be inevitable if excess morbidity and mortality is to be avoided. The Kenya Red Cross Society proposes to support delivery of preventive and promotive health services for prevention of epidemics, support the strengthening of community based surveillance for early detection of outbreaks, support in procurement and distribution of emergency supplies and enhance community education.

The proposed activities for health sector support aims at strengthening community based surveillance for early outbreak detection and reporting, minimising the number of vulnerable children to vaccine preventable diseases through accelerated increase in vaccination coverage for enhanced immunity, increasing access to basic health care through an integrated Primary Health Care based prevention and clinical services especially in hard to reach and cut-off communities.

## Water and Sanitation

The proposed activities for water and sanitation will be aimed at ensuring access to safe water, improved sanitation facilities and promotion of hygiene to prevent water borne diseases. Identified needs include water treatment, provision of water storage facilities, construction of latrines and hygiene promotion.

## The Proposed Operation

<b>Search and Rescue</b>
<b>Objective 1: To undertake search and rescue operations in flood-affected areas.</b>
<b>Activities planned:</b> <ul style="list-style-type: none"> <li>• To support standby teams in all regions for rapid deployment.</li> <li>• To evacuate affected persons to safer grounds.</li> <li>• To equip the search and rescue teams with basic rescue gear.</li> <li>• To support operational links to other search and rescue authorities.</li> </ul>
<b>Relief distributions (food and non-food items)</b>
<b>Objective 2: To provide non-food items to families affected by floods.</b>
<b>Activities planned:</b> <ul style="list-style-type: none"> <li>• To transport NFIs to affected areas.</li> <li>• To distribute non-food items to the affected communities.</li> </ul>
<b>Emergency Health and Care</b>
<b>Objective 3: To contribute to reduction of excess morbidity and mortality caused by floods and landslides by providing preventive public health community care and basic clinical services to populations affected and displaced by floods.</b>
<b>Activities planned:</b> <ul style="list-style-type: none"> <li>• Detailed assessments and mapping the existing health capacities for identification of gaps.</li> <li>• Carry out health promotion and disease prevention campaigns focusing on diseases with epidemic potential including cholera prevention, prevention of Vector borne diseases including malaria and RVF, address reproductive health issues in emergencies including transmission of HIV, promotion of safe motherhood and advocacy for prevention of Sexual and Gender Based Violence (SGBV).</li> <li>• Support Ministry of Health (MoH) in meeting basic health care needs of the flood affected population through basic clinical services and preventive care including antenatal care, postnatal care, safe delivery especially for risk pregnancies and provide reproductive health education.</li> <li>• Provide basic medical supplies Inter agency Emergency Health Kit (IEHKs), targeting existing hospitals and clinics without supplies.</li> <li>• Procure and avail cholera kits (volunteer and medical modules) for epidemic preparedness.</li> <li>• Conduct a stakeholder mapping to determine the presence of other actors and their contribution to the health sector to avoid duplication of activities and enhance coordination.</li> <li>• Continuous monitoring, evaluation and development of operational updates.</li> </ul>
<b>Water, sanitation and hygiene promotion</b>
<b>Objective 4: To provide sustained access to safe water and adequate sanitation facilities and hygiene promotion for the flood affected populations.</b>

**Activities planned:**

- Procure and distribute water treatment chemicals at household level.
- Procure and distribute household water filters for marooned households.
- Procurement of consumables for water treatment unit.
- Provision of storage tanks at key strategic points.
- Distribution of sanplats and materials for construction of latrines.
- Carry out refresher training on Participatory Hygiene and Sanitation. Transformation in Emergency Response (PHASTER) for volunteer trainers of trainers (ToTs).
- Deployment of PHASTER TOTs to train affected communities on hygiene and cascading of hygiene promotion at household level.

**Logistics**

**Objective 5: Offer logistical support in terms of primary and secondary transportation of non-food relief, as well as stock relief items in warehouses in the field for easy access by beneficiaries at all times.**

**Activities planned:**

- To provide primary and secondary transportation of non-food items.
- Conduct distribution of food and non-food items.
- Transportation of personnel and volunteers.

**Communications – Advocacy and Public information****Planned Activities**

- Produce information bulletins and updating KRCS website.
- Share floods related information with other stakeholders.
- Field trips for media coverage, documentation and donors.
- Produce and air radio and/or television spots; and periodic publications.
- Field communication.

**Capacity of the National Society**

The Kenya Red Cross Society has good response capacity and the ability to make rapid deployment for affected areas as well as put in place high readiness capacity for areas yet to be affected. With 6 branches, 8 regional offices and 70,000 volunteers, the National Society has capacities at regional levels to make an initial response which can later on be reinforced by headquarter re-enforcement both in human and material terms.

This capacity cuts across human, material, as well as planning and mobilization of response. The competency of the staff and volunteers cuts across relief, rehabilitation and development and ability to address all aspect of the disaster management cycle with proven track record. The KRCS has a wide experience in managing similar emergency operations.

**Monitoring and Evaluation**

The National Society Headquarters works closely with Branches countrywide in the targeted areas to ensure proper delivery of humanitarian assistance to the flood victims. The National Society together with members of the sudden onset disaster committee and the Eastern Africa Regional office secretariat technical personnel will assume the overall monitoring role to ensure accountability, timely and quality response.

**Capacity of the Federation**

The Federation's Eastern Africa Regional office is located in Kenya and will provide technical support to the operations through its Disaster Management Department. The Food Security Advisor for the Eastern Africa Regional office will assist with implementation of activities and monitoring food interventions. Additional technical support in Health and Water and Sanitation (WatSan) are also in place at the Eastern Africa Regional office.

## How we work

*All International Federation assistance seeks to adhere to the [Code of Conduct for the International Red Cross and Red Crescent Movement and Non-Governmental Organizations \(NGO's\) in Disaster Relief](#) and is committed to the [Humanitarian Charter and Minimum Standards in Disaster Response \(Sphere\)](#) in delivering assistance to the most vulnerable.*

The International Federation's activities are aligned with its Global Agenda, which sets out four broad goals to meet the Federation's mission to "improve the lives of vulnerable people by mobilizing the power of humanity".

### Global Agenda Goals:

- Reduce the numbers of deaths, injuries and impact from disasters.
- Reduce the number of deaths, illnesses and impact from diseases and public health emergencies.
- Increase local community, civil society and Red Cross Red Crescent capacity to address the most urgent situations of vulnerability.
- Reduce intolerance, discrimination and social exclusion and promote respect for diversity and human dignity.

## Contact information

### For further information specifically related to this operation please contact:

- **In Kenya:** Mr. Abbas Gullet, Secretary General, Kenya Red Cross Society, email: [gullet.abbas@kenyaredcross.org](mailto:gullet.abbas@kenyaredcross.org) Phone 254.20.60.35.93; 254.20.60.86.81/13 Fax: 254.20.60.35.89
- **In Kenya:** Eastern Africa Regional Office (Nancy Balfour, Disaster Management Coordinator, Eastern Africa, Nairobi), phone: +254.20.283.5208; Fax: + 254.20.271.2777; email: [nancy.balfour@ifrc.org](mailto:nancy.balfour@ifrc.org)
- **In Kenya:** Eastern Africa Regional Office (Dennis Johnson, Ag. Regional Representative for the Eastern Africa Office, Nairobi): email: [dennis.johnson@ifrc.org](mailto:dennis.johnson@ifrc.org) ; telephone: +254.20.283.51.17.
- **In Geneva:** Pablo Medina, Operations Coordinator for Eastern Africa; phone: +41.22.730.43.81; fax: +41 22 733 0395; email: [pablo.medina@ifrc.org](mailto:pablo.medina@ifrc.org)

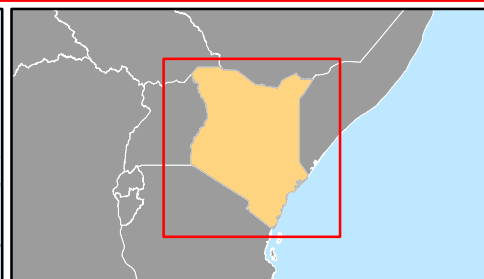
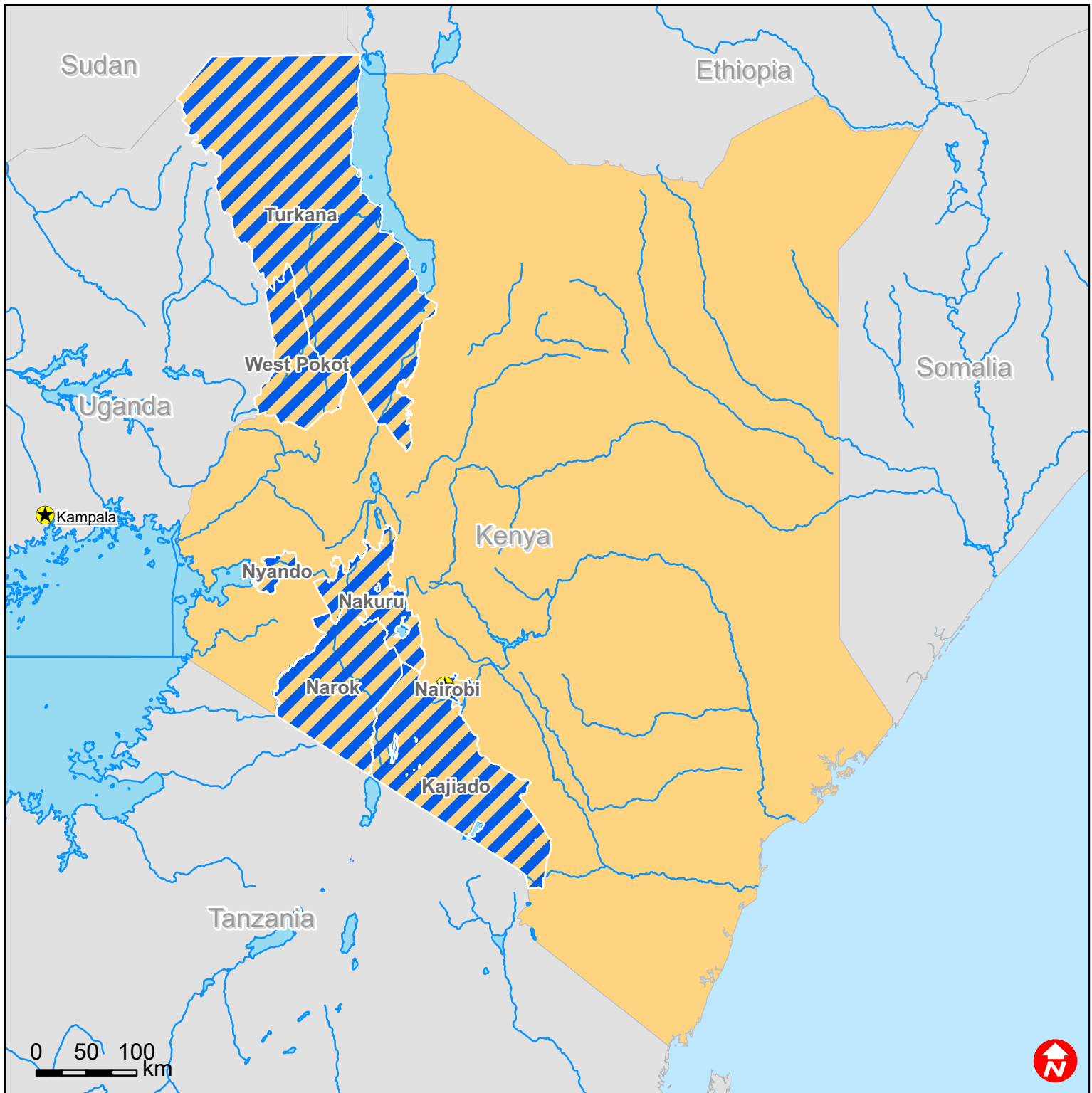
[<DREF budget and map below; click here to return to the title page>](#)

<b><u>DREF OPERATION BUDGET SUMMARY</u></b>		<b>Annex 1</b>
	<b>DREF NAME</b> Kenya - Floods 2010	<b>DREF Number</b> MDRKE011
		<b>BUDGET CHF</b>
	<b><u>RELIEF NEEDS</u></b>	
500	Shelter	15,375
505	Construction Materials	0
510	Clothing and Textiles	33,750
520	Food	0
523	Seeds and Plants	0
530	Water and Sanitation	107,299
540	Medical and First Aid	27,408
550	Teaching Materials	2,714
560	Utensils and Tools	39,000
570	Other Supplies and Services	0
	<b>Total Relief Needs</b>	<b>225,546</b>
	<b><u>CAPITAL EQUIPMENT</u></b>	
580	Land and Buildings	0
581	Vehicles Purchase	0
582	Computers and Telecom Equipment	29,417
584	Office/Household Furniture and Equipment	0
587	Medical Equipment	2,180
589	Other Machinery and Equipment	0
	<b><u>TRANSPORT, STORAGE AND VEHICLES</u></b>	
590	Storage - Warehouse	0
592	Distribution and Monitoring	9,770
593	Transport and Vehicles Costs	21,360
	<b><u>PERSONNEL</u></b>	
600	International Staff	0
640	Regionally Deployed Staff	0
661	National Staff	13,290
662	National Society Staff	33,870
670	Consultants	0
	<b><u>WORKSHOPS AND TRAINING</u></b>	
680	Workshops and Training	2,430
	<b><u>GENERAL EXPENSES</u></b>	
700	Travel	0
710	Information and Public Relations	0
730	Office running costs	40,647

740	Communication Costs	25,961
750	Professional Fees	0
760	Financial Charges	0
790	Other General Expenses	0
	<b><u>PROGRAMME SUPPORT</u></b>	
599	Programme Support - PSR	28,118
	<b>Total Operational Needs</b>	<b>207,043</b>
	<b>Total Appeal Budget (Cash and Kind)</b>	<b>432,589</b>
	<b>Available Resources</b>	
	<b>Net Request</b>	<b>432,589</b>



# Kenya: Floods



- Capitals
- Affected districts

The maps used do not imply the expression of any opinion on the part of the International Federation of the Red Cross and Red Crescent Societies or National Societies concerning the legal status of a territory or of its authorities.  
Map data sources: ESRI, DEVINFO, International Federation - filename