

Operations update



Niger: Food insecurity

Emergency appeal n° MDRNE005
GLIDE n° OT-2010000028-
NER
Operations update n° 1
05 May, 2010

Period covered by this Ops Update: March to April 29, 2010;

Appeal target (current): CHF 986,862 (USD 932,409 or EUR 677,278; with this Ops Update, [<click here to view the attached Revised Emergency Appeal Budget>](#)

Appeal coverage: 46% including DREF; [<click here to go directly to the updated donor response report, or here to link to contact details >](#)

Appeal history:

- This Emergency Appeal was initially launched on 18 March, 2010 for CHF 986,862 for 9 months to assist 300,000 beneficiaries.
- **Disaster Relief Emergency Fund (DREF):** CHF 229,046 was initially allocated from the Federation's DREF to support the National Society to respond.



Beneficiaries rehabilitate land at Cash for work project site, Tahoua, Niger/ April 2010

Summary: The severity of the food crisis has been confirmed by partners' assessment coordinated by CILSS. Population movement from rural areas to towns is observed. Meanwhile availability of cereals in markets in Niger has also been confirmed. The strategy of the Red Cross Society of Niger (RCSN) to focus on cash programming is relevant as it will help targeted group to access food. The National Society (NS) with support from the Federation recruited needed local staff to ensure quality response interventions and a delegate as operations manager. The RCSN has received three vehicles from the Dakar stock to support the logistic part of the operation. The identification of villages and targeted beneficiaries is not yet finished while the work started in 31 villages where the identification is completed. Coordination with Red Cross and non-Movement partners is regularly done. The Disaster response plan of action is being revised according to the received funding. Despite appropriateness of the response strategy only 19% of the appeal has been covered (if we take off the DREF). If funding is insufficient some gaps will remain even with good coordination.

The situation

Rains have been irregular, late and have stopped earlier in Eastern Sahel countries. The annual harvest statistics of Niger show that many departments are going through a deficit in the production of cereals. Alerted by these results, a rapid assessment was done by the government of Niger in mid-December revealing that by the end of January already more than half of the rural households will have no cereals in stock.

Region	Department			Population
	deficit in cereal production	very vulnerable > 35 %	very + moderate vulnerable > 50 %	very + moderate vulnerable
Agadez	all	Outside of survey <u>representativeness</u>		
Diffa	all	Maina Soroa	All departments	328,781
Dosso	Dosso C	none	Gaya	183,199
Maradi	Dakoro, Maradi C	Tessaoua,	Aguie, Dakoro, Guidan Roundji, Tessaoua	1,216,927
Tahoua	Illéla, Tchintabaraden, Abalak, Tahoua CU	Illela, Tchintabaraden, Abalak, Tahoua, Keita	all departments	1,983,452
Tillaberi	Filingué, Ouallam, Tera, Tillabery dep. & CU	none	Tillaberi, Filingué, Oualam	761,377
Zinder	Mirriah, Tanout, Zinder CU		all departments	1,707,695
Niamey	all		Periphery	14,168
Total Departments focused with > 50 % very and moderate vulnerable				6,195,599
Total at National level				7,772,373

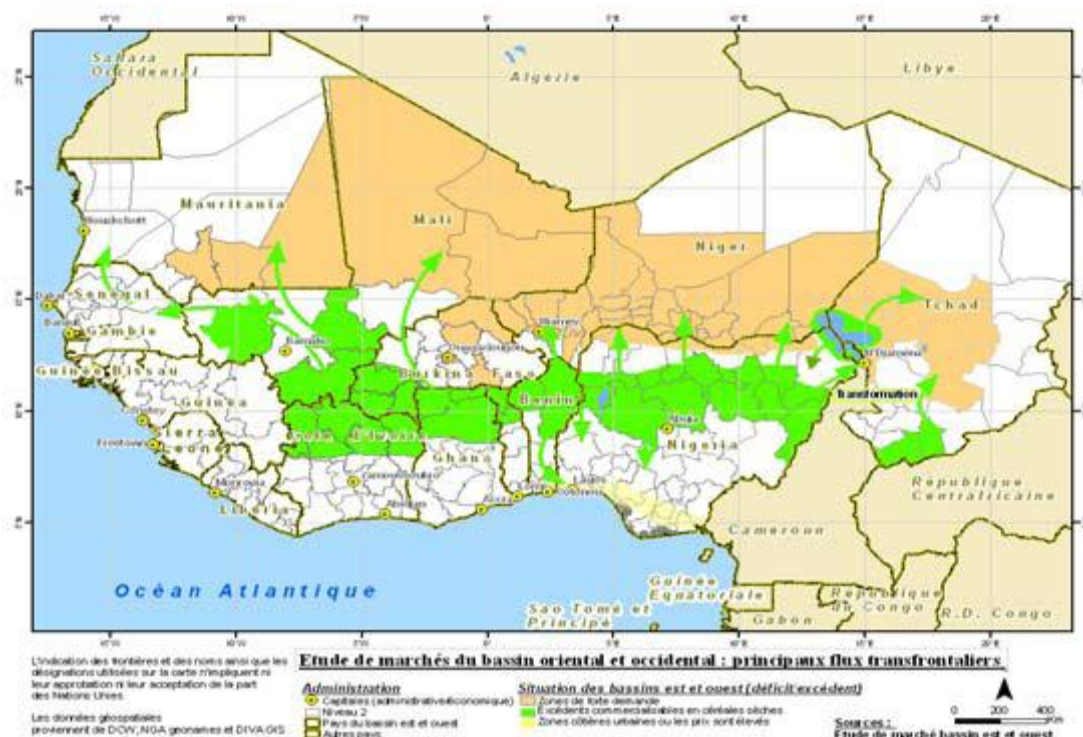
The households' assessment conducted by the government shows that more than half of the population have no cereals left in stock. The most affected regions are Diffa (328,781 people), Zinder (1,707,695) and Tahoua (1,983,452). All departments in these regions are concerned and more than half of the rural population have exhausted their stock since end of January 2010. For this assessment, the applied criteria for vulnerability at household level were: the level of coping mechanisms available to or applied by the household; the remaining harvested cereals in storage and the time until these will be finished; the number of heads of livestock belonging to households.

In the second week of March, the government provided the preliminary list of the most vulnerable zone (rural municipalities and the number of villages). The criteria of vulnerability at communal level are: the deficit of cereal and/or pastoral production of a village production. By crossing the findings of household and village assessments, the number of most vulnerable and moderate vulnerable people the Red Cross can support at community level has been identified. This number will be subject to monitoring based on further assessments and as the situation unfolds.

This new and more precise data allow a village wise coordination with government and non governmental partners to avoid duplication or gaps. A strong movement of the rural population to secondary town is observed. The moving persons are looking for work, already leading to a labour price fall.

Description of the cereal market in Niger

As it is shown in the map below there is an influx of cereals from neighbouring countries to Niger; however, due to lack of funds in vulnerable households, the accessibility of food is limited. For more information see: http://www.cilss.bf/IMG/pdf/NISA_36-2.pdf



Coordination and partnerships

The CCA (cellule de crise alimentaire) of the Early Warning System (SAP, Système d'Alerte Précoce) of the Niger Government is coordinating national and internal NGO interventions according to the plan of support the authorities have provided. The Ministry of Health is coordinating action pertaining to nutrition. Security issues in Tahoua, Tillabery, Zinder and Agadez are followed by the ICRC. The villages are selected and the quantities of seeds or food planned to be distributed are published by the government supported by the respective UN Agencies. The humanitarian organizations for the first round of the food distribution in May are selected by the CCA and WFP. NRC has been selected and will be supported by Irish Red Cross and the Federation. The cash for work part of the governmental support plan is coordinated at regional and department levels by the Agricultural and Environmental Directions or services while FAO provides support for seeds distribution.

Movement coordination

The RCSN is conducting the following activities with support provided by Movement partners:

NRC supporting Movement member	Where?	What?
ICRC	Tillabery: Ouallam, Filingué	<ul style="list-style-type: none"> Food distribution, seed distribution, where agriculture is possible
	Agadez: Arlit and Tchighozerine	<ul style="list-style-type: none"> Food distribution and destocking of over charge of animals, support to animal production, seed distribution where agriculture is possible
Qatar Red Crescent	<ul style="list-style-type: none"> Tillabery Region Niamey periphery commune of Agadez Maradi Region 	<ul style="list-style-type: none"> Food security and nutritional program for the emergency. Food security development Water and sanitation. health (program for pupils)

	<ul style="list-style-type: none"> • Areas where food security development projects will be executed are in the stage of preparation and survey 	
French Red Cross	Zinder (functioning office)	<ul style="list-style-type: none"> • Nutrition in 24 Integrated Health Centres (CSI) (14 in Tanout, 8 in Magaria, and 2 in Zinder urban area) and 1 CRENI, extension on nutrition, cash for work, distribution of seeds, training on agricultural issues; • Collaboration with Irish Red Cross and IFRC for the food distribution in Zinder in 61 villages of the urban municipality
	Agadez (functioning office)	<ul style="list-style-type: none"> • Whole region, 35 CSI, 2 CRENI, cash for work, sand removal, arrangement of Koris, rehabilitation of wells,
	Niamey (functioning office)	<ul style="list-style-type: none"> • 10 CSI
Irish Red Cross	Niamey and Zinder (functioning office) field activities in Tanout	<ul style="list-style-type: none"> • Tanout : Food security, emergency response; • Cash for work, agricultural production support, subsidies, selling; in 80 villages • 44 Graham banks, 250 t of cereals from WFP; • 25 water points, seed distribution; • Office space available and guest house in both Niamey and Zinder (possibilities to host RCRC/Federation delegates) • Food distribution in Zinder surrounding 61 villages
Spanish Red Cross	Tahoua: Illela and Tahoua urban city and department Maradi: Guidan Roudji	<ul style="list-style-type: none"> • Emergency: nutrition ECHO proposal for Maradi and Tahoua submitted; • cash for work: Tah: 12 villages • Graham banks: Tah: 18 villages • Seed distribution: Tah: 26 villages
International Federation of RC/RC	Diffa: Diffa and Maine Soroa Tahoua: Zinder: Tanout and Zinder	<ul style="list-style-type: none"> • Cash for work, nutrition, and seed distribution, Diffa: 30 villages, Tahoua: 7 villages/districts, Zinder: 25 villages • Collaboration with Irish and French Red Cross for the food distribution in Zinder in 61 villages of the urban municipality

Niger RC is being supported by Qatar Red Crescent, French Red Cross, Irish Red Cross, Spanish Red Cross and ICRC in some conflict areas. Most of the activities above mentioned are related to regular activities that have started before the food crisis. Regular contact and good environment for synergy between movement partners programmes is in place to support NRC activities in food security area.

Red Cross and Red Crescent action

National Society Capacity Building:

To reinforce coordination capacities of the Niger Red Cross, an operation manager is now based in NRC. To strengthen NS response capacity to the food crisis, three agronomists and three drivers have been recruited; laptops were provided as well as three cars. The agronomists are integrated in the three branches where emergency intervention is conducted. The branch offices of Diffa and Zinder will have internet to facilitate rapid coordination of the activities. Bank accounts at branch level for this operation have been opened. At national level a Federation experienced local staff in accounts is recruited and is working in the office of the National Society. To support the food distribution by WFP in Zinder, a Federation experienced relief person of the branch is working with French and Irish Red Cross. While ICRC is building the office of Diffa branch, Federation is preparing to equip this office and guest rooms, to have an operational branch office. Diffa is located at the East end of the country near the Chadian border.

To facilitate the coordination role of the International Federation, Red Cross/Red Crescent Movement meetings on the food security situation in Niger are held to analyse interventions made so far with regularly updates of all partner's declared intentions. The table below maps the plans of the RCSN in collaboration with the Federation and Participating National Societies (PNS) represented in Niger and what they are doing.

Coordination:

WFP asked the NS make proposition for the distribution of food in the urban municipality of Zinder. The negotiation is started. Irish Red Cross has the lead on this as they have an office with three delegates in Zinder town.

DEPARTMENT	Commune (Zone)	Number of villages	Vulnerable population	Most vulnerable population	Quantity (tons)
CU ZINDER	North CU Zinder	25	23,863	6,419	91.70
	East CU Zinder	12	5,548	1,492	21.32
	South CU Zinder	24	16,349	4,398	62.83
Total CU Zinder	3	61	45,760	12,309	175.85

Progress towards outcomes

Concerning cash for work, 15 villages were initially planned, but 62 are already identified, of which 31 have started work. We will manage to go for about 75 villages in this programme.



Women participate in the Cash for Work project in Tahoua.

Constraints:

The recruitment and procurement procedures took long time and the National Society staff is used to that. There is only one person that is in charge of logistics, administration and finance.

Food security

Objective: To ensure increased community resilience and improvement of agriculture production environment through cash for work and seed distribution in Diffa, Zinder and Tahoua.

Outputs (expected results)	Activities planned
1. Cash for work in 15 villages (1,500 persons for 40 days each)	<ul style="list-style-type: none"> Identify 15 villages for cash for work in collaboration with authorities and technical services of Niger; Identify areas that need anti-erosion and water harvesting measures according to the communal development plan to improve agricultural production; Train volunteers, foremen and supervisors; Equip villages with soil working tools; Implement and supervise cash for work activities;

	<ul style="list-style-type: none"> • Monitor and evaluate cash for work actions and their impact on the harvest; • Evaluate cash for work impact on beneficiaries.
2. The most vulnerable 40 households in the 120 villages have received improved seeds (15 kg) for the forthcoming seasons	<ul style="list-style-type: none"> • Provision of improved seeds to 4,800 families and to certificated seed producers in collaboration with FAO; • Identification of the 40 most vulnerable families in the 120 villages; • Implementation of a mechanism to distribute seeds (training of volunteers); • Identification of certificated improved seed producers; • Extension and training on the use of seeds of improved varieties; • Monitoring and evaluation of distribution activities.
3. During the cropping season the most vulnerable families of 120 villages have received general food distribution of supplementary feeding	<ul style="list-style-type: none"> • Identify most vulnerable households; • Sign an agreement with WFP; • Train volunteers on distribution techniques; • Distribute food to households; • Monitor and evaluate the distribution
4. Out of the 120 villages, 10 are identified for long term interventions	<ul style="list-style-type: none"> • Conduct assessments for long-term support needs; • Identify the most vulnerable villages with the highest potential in agricultural production increase through long term food security intervention; • Write a concept note on a long term food security project for the 10 villages.

Progress:

Results	Activities implemented
Cash for work is carried out in more than 50 instead of the 15 villages initially planned	<ul style="list-style-type: none"> • Sites for 61 villages are identified in Tahoua, Diffa and Zinder • Implementation has started in 31 villages in Diffa and Tahoua (about 30,000 inhabitants)
Seed distribution	<ul style="list-style-type: none"> • Sellers of improved seeds are identified • A logistic mission to Zinder, Tahoua and Diffa has started • FAO and the concerned Ministry published their list of villages in which they will intervene
During the cropping season the most vulnerable families of 61 villages have benefitted from food distribution in the surrounding of Zinder	<ul style="list-style-type: none"> • The agreement with WFP is signed by Irish Red Cross for the Urban commune of Zinder • The 1st round is planned for May for 12,309 vulnerable persons in the Urban Commune of Zinder • The identification of households will be one according to the technical note from WFP and CCA.

Emergency health

Outcome: To improve the nutritional status of children under 5 and pregnant and breast feeding women.	
Outputs (expected results)	Activities planned
Assist in the detection of malnourished children under 5 and pregnant and breast feeding women and their orientation to reference centres	<ul style="list-style-type: none"> • Training for 60 volunteers on malnutrition detection, delivery of messages on nutrition and health; • Extension of key messages: best practices about nutrition and their proper use; detection of malnourished children and pregnant and breast feeding women; use of ORS; and hygiene promotion; • Monitoring and evaluation of the activities at regional, national and international levels. • An identification mission is carried out, new plans and budgets are available

Progress: Identification and detailed plans of action have been drafted for Zinder and Diffa. The Plan of Action will be implemented if it is funded. The RCSN is implementing nutritional activities with support from French Red Cross.

Constraints: The main constraint is the lack of funding.

Communications – Advocacy and Public Information

A communication mission to increase the visibility of the food crisis operation was carried out in Tahoua, Taza and Bambéye by the RCSN with support from the Federation Dakar communications unit from 14 to 23 April, 2010. The communications team was accompanied by a professional camera crew. The launch of the cash for work programme in Bambéye village was also filmed by the national TV. The event was shown on the national TV news on 17 April. A web story on IFRC/RCSN action with photos (cash for work programme and RCSN volunteers' detection activities for malnutrition in Taza health centre) was published at the IFRC web site on 23 April. An edited B-roll (a 6:45 minute set of chosen images and interviews) with updated talking points was sent to National Societies on 28 April. A 6-minute film on Niger food crisis will be edited in Geneva.

How we work

All IFRC assistance seeks to adhere to the [Code of Conduct for the International Red Cross and Red Crescent Movement and Non-Governmental Organizations \(NGO's\) in Disaster Relief](#) and the [Humanitarian Charter and Minimum Standards in Disaster Response \(Sphere\)](#) in delivering assistance to the most vulnerable.

The IFRC's vision is to inspire, encourage, facilitate and promote at all times all forms of humanitarian activities by National Societies, with a view to preventing and alleviating human suffering, and thereby contributing to the maintenance and promotion of human dignity and peace in the world.

The IFRC's work is guided by [Strategy 2020](#) which puts forward three strategic aims:

1. Save lives, protect livelihoods, and strengthen recovery from disaster and crises.
2. Enable healthy and safe living.
3. Promote social inclusion and a culture of non-violence and peace.

Contact information

For further information specifically related to this operation please contact:

- In **Niamey**: Aly Bandiaré, President, Red Cross Society of Niger, Niamey; phone: +227 73 30 37, Fax: +227 73 24 61; email: crniger@intnet.ne;
- In **Dakar**: Youcef Ait-Chellouche, Disaster Management Coordinator; phone: +221 33 869 3644 email: youcef.aitchellouche@ifrc.org;
- In **Southern Africa**: Alasan Senghore Director for Africa Zone, Johannesburg, email: alasan.senghore@ifrc.org; phone +27 11 303 9700; mobile +27 71 872 5111; fax +27 11 884 0230
- In **Geneva**: Christine South, Acting Operations Coordinator for Africa; phone: +41 22 730 4529 (direct) Mobile: +41 79 308 98 24; Fax: +41 22 733 03 95; email: christine.south@ifrc.org

[<Financial statement attached below; click here to return to the title page>](#)

ANNEX 1 Budget summary
RELIEF NEEDS

Shelter	
Construction Materials	
Clothing & Textiles	
Food	
Seeds & Plants	158,636
Water & Sanitation	
Medical & First Aid	
Teaching Materials	
Utensils & Tools	7,703
Other Supplies & Services	138,068
	<hr/>
Total Relief Needs	304,407

CAPITAL EQUIPMENT

Land & Buildings	
Vehicles Purchase	6,818
Computers & Telecom Equipment	20,909
Office/Household Furniture & Equip.	24,600
Medical Equipment	2,813
Other Machinery & Equipment	

TRANSPORT, STORAGE & VEHICLES

Storage - Warehouse	
Distribution & Monitoring	18,983
Transport & Vehicles Costs	62,675

PERSONNEL

International Staff	132,000
Regionally Deployed Staff	153,000
National Staff	50,114
National Society Staff	51,455
Consultants	

WORKSHOPS & TRAINING

Workshops & Training	7,909
----------------------	-------

GENERAL EXPENSES

Travel	27,818
Information & Public Relations	15,534
Office running costs	
Communication Costs	8,182
Professional Fees	
Financial Charges	3,000
Other General Expenses	32,500

SERVICE FEES

Service Fees

PROGRAMME SUPPORT

Programme Support - PSR

64,146

Total Operational Needs	682,454
<hr/>	
DREF ALLOCATION	986,862
