

DREF operation



International Federation
of Red Cross and Red Crescent Societies

Pakistan: Hunza landslides and floods

DREF operation n° MDRPK004
GLIDE n° [LS-2010-000004-PAK](#)
5 June 2010

The International Federation of Red Cross and Red Crescent (IFRC) Disaster Relief Emergency Fund (DREF) is a source of un-earmarked money created by the Federation in 1985 to ensure that immediate financial support is available for Red Cross and Red Crescent emergency response. The DREF is a vital part of the International Federation's disaster response system and increases the ability of National Societies to respond to disasters.

CHF 187,128 (USD 162,160 or EUR 132,492) has been allocated from the International Federation's Disaster Relief Emergency Fund (DREF) to support the Pakistan Red Crescent Society (PRCS) in delivering immediate assistance to 14,700 beneficiaries. Unearmarked funds to repay DREF are encouraged.

Summary:

Massive landslides hit Hunza (Gilgit Baltistan) on 4 January 2010, sliding two villages into the Hunza river. This resulted in the blockage of the river and the Karakorum highway, thereby creating an artificial dam. The situation deteriorated during the second half of May as the monsoon season started and temperatures increased, which resulted in further rise of the water level in the dam. According to the latest updates from the National Disaster Management Authority (NDMA) on 3 June 2010, the level reached a depth of 109 metres and the water has started to overflow through the spillway with a total discharge at 2,600 cusecs.



The Pakistan Red Crescent Society internally displaced persons camp at Chilmisdass. To avoid the flood, the camp has now shifted to a safer location. Photo: Pakistan Red Crescent Society.

The government authorities, under the leadership of NDMA, have been developing contingency plans and evacuating people along the riverbed over a stretch of 100 km (Gilgit to Hunza). According to latest reports, 20,000 people have been evacuated from the downstream area. To date, 23 camps have been set up to accommodate some 16,000 individuals of Gilgit and Hunza.

PRCS has been in the forefront of the response and preparedness efforts in the affected areas through its provincial and district branches as well as disaster response cells. In coordination with government and non-governmental agencies, the national society has been directly managing two camps, one with 209 registered families and another with 73 families with available in-country resources, providing food and non-food items to people residing at camps, continuously monitoring the situation and developing contingency plans for the potential red zone areas.

With the situation deteriorating, PRCS and the International Federation carried out a rapid assessment on 23-24 May 2010 to assess the needs of the newly displaced people, the ongoing and planned efforts of other agencies, and the existing gaps on the ground. Based on the assessment findings, PRCS plans to scale up its efforts to support the most vulnerable families through provision of food, non-food items, emergency shelter, health, psycho-social support, restoring family links (RFL), and water and sanitation services. Funds allocated from DREF will be used for provision of non-food items, including emergency shelter materials, and emergency health and water and sanitation interventions for the most vulnerable 2,100 families (14,700 beneficiaries).

PRCS will continue to monitor the situation and liaise with the NDMA and other stakeholders. It is expected that the situation may improve over the next three months and people may go back to normal life. However, if the situation further deteriorates, PRCS will look into mobilizing additional resources with support of the International Federation and other Movement partners.

The current operation is expected to be implemented over three months, and will therefore be completed by 5 September 2010; a Final Report will be made available three months after the end of the operation (by 5 December 2010).

[<click here for the DREF budget; here for contact details; here to view the map of the affected area>](#)

The situation

A series of landslides hit Hunza valley in Gilgit Baltistan province on 4 January 2010. According to local authorities, two villages were slid into the river due to landslides. The landslides blocked Hunza River and created an artificial dam, where water level was rising at initially 2.7 to 3 feet per day. The total water deposit has reached 368 feet and the dam has stretched from 15 km to 22 km. Since January, Frontier Works Organization (FWO) has been working to excavate a spill way to reduce the risk of massive flooding. The spillway has been completed and any excavation work has been stopped now.

Situation deteriorated during the second half of May as the monsoon season started and glaciers melted, resulting in the expansion of the lake. As of 29 May 2010, water started to flow through the spillway at 100 cusecs. According to the National Disaster Management Authority (NDMA) updates on 3 June 2010, the outflow has increased to 2,600 cusecs. Assisted evacuation has taken place from Gilgit and Hunza and around 16,000 individuals have been evacuated and relocated to 23 camps at safe locations in Gilgit and Hunza.

The Pakistan Red Crescent Society (PRCS)-International Federation rapid assessment results and government reports indicate that there is a critical need of food, non-food items and health services to the upper stream areas, whose estimated population is 25,000 people. A total of 1,652 people are permanently displaced from two villages around the landslides and another caseload of 924 people from three villages have been evacuated due to the rising water levels in the lake. The relief efforts of government and non-governmental organizations continue, with additional services needed to cover gaps. PRCS plans to scale up its efforts to address immediate needs of the most vulnerable people (at least 14,700). The national society will continue to monitor the situation and work on contingency plans. If the situation deteriorates, PRCS will look into mobilizing additional resources with support of the International Federation and other Movement partners.

Coordination and partnerships

Apart from holding regular Red Cross Red Crescent Movement Coordination meetings, PRCS is closely coordinating its activities with the local government and district authorities as well as other key stakeholders. PRCS, with the support of the International Federation and Movement partners, is currently working on a detailed plan for worst case scenario, keeping in view the emerging disaster situation in Gilgit and Hunza. The PRCS and International Federation disaster management teams are also working with the district branches of Mansehra, Kohistan, Shangla and Battagram on contingency plans of evacuation.

Red Cross and Red Crescent action



Children from a displaced family from Hunza, temporary residing in an open place without any water and sanitation facilities. Photo: Pakistan Red Crescent Society.

PRCS has been assisting the affected communities from the first day of the landslide disaster through the district branch staff. The PRCS Gilgit Baltistan branch responded with immediate distribution of non-food items to 200 families in January 2010. On 30 April 2010, the district government requested PRCS to establish a camp for the affected people. Initially there was a need to accommodate 195 displaced families. However, with the changing scenario, needs are rising every single day. PRCS has established an internally displaced people (IDP) camp in Chilmisdass Gilgit. To date, 345 families have been registered and 209 families are residing in the PRCS IDP camp. PRCS has taken charge of another camp at Cheetah colony hosting 73 families.

PRCS has been providing food, non-food items, health services and psychosocial support to the affected people.

The PRCS Gilgit Baltistan branch erected 239 tents in Chilmisdass, however the camp has been shifted to safe location after the camp site was declared as red zone.

A survey from Australian Expert declared Chilmisdass as potential red zone and 209 resident families shifted to another location. A total of 104 families shifted to Special Education Centre (SEC) near Karakorum International University (KIU) and 86 families shifted to KIU Girls Hostel. Nineteen tents have been pitched in the Girls Hostel vicinity to accommodate rest of the 19 families. The water and sanitation team is assessing needs and if the stay in these facilities continues, then latrines and washrooms could be constructed for these 19 families. The in-camp support provided by PRCS, with the support of the International Federation, is tabulated below:

Phase	Area of operation		Targeted households	Targeted people	Assistance provided
1	Altit	4 camps	253	2,024	Food packs, non food items, medicines, health and psychosocial support programme (PSP) services, restoring family links (RFL) services.
2	Ainabad Shishkat	By helicopter and boats	80	640	Food items, tents (40) and health services.
3	Altit	4 camps	141	987	Food and non-food items (NFI).
4	Chilmisdass	PRCS camp	293	868	NFI kit: Blankets, tarpaulin sheets, je can, kitchen set, hygiene kit, hurricar lamp and stove.
Total number of households/ people targeted			767	4,519	

PRCS is currently working in close collaboration with the local government, district disaster management authority and all other key stakeholders for the smooth running of the operation. NDMA requested PRCS to provide 2,500 non-food items kits for out of camp distributions. The stock has been dispatched (logistic support of World Food Programme) to the PRCS Gilgit Baltistan district branch, which is in close coordination with the provincial disaster management authority (PDMA). PRCS has utilized the disaster preparedness stocks to cater this need. The district management authority has requested PRCS for additional support of tents and non-food items at the following locations:

- Cheeta colony Gilgit: (49 tents, 73 non-food item kits)
- Nagar Chalt Hunza: (45 tents, 45 family hygiene kits)
- Zulfikarabad Jutial Gilgit: (17 non-food item kits)

In response to the evolving situation, the PRCS health teams are providing assistance to the in-camp IDPs. To date, assistance has been provided to 914 patients. On the request of local authorities, the PRCS health teams have traveled by helicopter to remote and inaccessible areas of Gulmit, Shumshal and Passu. These areas are inaccessible by road and the people trapped there are in great need of medical services. PRCS, along with the government, is making its utmost efforts to facilitate assistance the population of upper Hunza who are otherwise cut off from the main services and remain isolated. The PRCS national headquarters has also deployed medicines for 2,000 individuals for a three-month period. A water and sanitation team has also been deployed to the area to monitor the water and sanitation facilities at camp and provide the necessary support.



Children standing out of their tent at the Pakistan Red Crescent Society internally displaced persons camp. Photo: Pakistan Red Crescent Society.

Apart from catering to the needs of the Gilgit Baltistan people, PRCS has prepared contingency plans for Kohistan, Battagram, Haripur and Mansehra and the PRCS branches in these districts are ready and at standby to assist the people if need arises.

The needs

The rapid assessment results and the situation reports from the affected areas indicate that there is a critical need of food, non-food items and health services to the upper stream areas, whose estimated population is 25,000 people. Government and other nongovernmental agencies' efforts in addressing the needs of the affected people continue, with additional services needed to cover gaps. PRCS plans to scale up its efforts to address immediate needs of the most vulnerable people (at least 14,700). The national society, with support of the International Federation and the Movement partners, continues to monitor the situation and prepare contingency plans.

It is expected that the situation may improve over the next three months and people may go back to normal life. However, if the situation further deteriorates, PRCS will look into mobilizing additional resources with support of the International Federation and other Movement partners.

The proposed operation

The proposed operation will focus on providing immediate assistance to the most vulnerable people (at least 14,700 people) in the affected areas over three months. With support from the International Federation's disaster relief emergency fund (DREF) allocation, affected people will be provided with non-food items (including emergency shelter materials), emergency health and water and sanitation services.

Relief distributions (basic non-food items, emergency shelter materials)

Outcome: Immediate needs of at least 14,700 people (2,100 families) residing in camps have been met through relief distributions.

Activities planned:

- Local procurement of relief items according to the International Federation standard procedures;
- Despatch and transportation by PRCS to the distribution sites;
- Storage and distribution of relief items by trained volunteers and staff;
- Regular detailed monitoring and reporting of distributions; including lesson learnt workshop;
- Ongoing monitoring and technical advice by the PRCS national headquarters and the International Federation.

Emergency health

Outcome: Reduced health risks through provision of primary health care services and safe water and sanitation to affected families residing in camps.

Activities planned:

- Assess and regularly monitor the health, water and sanitation situation and immediate needs of displaced population, particularly women, children and elderly;
- Deliver preventive and curative services for common health problems of most vulnerable people in camps; establish referral system with health authorities/facilities in host communities;
- Provide health teams and trained volunteers working in camps with locally-procured basic medicines and first aid kits;
- Conduct, through health teams and volunteers, disease prevention, health/hygiene/sanitation promotion activities together with displaced families;
- Produce and distribute information, education, communication materials that address key/common health and sanitation problems;
- Provide safe drinking water and sanitation facilities to 300 families;
- Conduct orientation/community sessions on safe use of water treatment products;
- Ensure that health and sanitation situation and activities in camps are coordinated with local health authorities and relevant agencies;
- Conduct ongoing monitoring and technical advice by the PRCS national headquarters and the International Federation.

Communications – Advocacy and Public information

The steady flow of timely and accurate information between those working in the field and other major stakeholders will support the objectives of this operation, increase the profile, funding and other support for PRCS and the International Federation, and provide a platform on which to advocate in the interests of vulnerable populations. In close collaboration with the operation, information about the operation will be provided for affected communities to support their relief and recovery. Donors and national societies will receive information and materials they can use to promote this operation such as news stories, profiles of beneficiaries and audio visual resources showing the impact of the operation on affected communities.

How we work

All IFRC assistance seeks to adhere to the [Code of Conduct for the International Red Cross and Red Crescent Movement and Non-Governmental Organizations \(NGO's\) in Disaster Relief](#) and the [Humanitarian Charter and Minimum Standards in Disaster Response \(Sphere\)](#) in delivering assistance to the most vulnerable.

The IFRC's vision is to inspire, encourage, facilitate and promote at all times all forms of humanitarian activities by National Societies, with a view to preventing and alleviating human suffering, and thereby contributing to the maintenance and promotion of human dignity and peace in the world.

The IFRC's work is guided by [Strategy 2020](#) which puts forward three strategic aims:

1. Save lives, protect livelihoods, and strengthen recovery from disaster and crises.
2. Enable healthy and safe living.
3. Promote social inclusion and a culture of non-violence and peace.

Contact information

For further information specifically related to this operation please contact:

In Pakistan: Pakistan Red Crescent Society:

- In Pakistan, Pakistan Red Crescent Society: phone: Ilyas Khan, Secretary General, mobile: +92 333 511 4223; email: sec.general@prcs.org.pk.

In Pakistan: IFRC country office:

- In Pakistan, Federation country office: Pepe Salmela, Head of country office, phone: +92 308 888 8954; email: pepe.salmela@ifrc.org.
- Younos Karim, Programme/ Movement coordinator, phone: + 92 300 555 4503; email: younos.karim@ifrc.org.

In India: IFRC South Asia regional office:

- Azmat Ulla, Head of regional office, phone: +91 11 2411 1125; fax: +91 11 2411 1128; email: azmat.ulla@ifrc.org.
- Michael Higginson, Regional programme coordinator, +91 11 2411 1125; fax: +91 11 2411 1128; email: michael.higginson@ifrc.org.

In Malaysia: IFRC Asia Pacific zone office, phone: +603 9207 5700

- Alistair Henley, Head of Zone, email: alistair.henley@ifrc.org.
- Elzat Mamutalieva, operations coordinator phone: +603 9 207 5727; mobile: +60 19 27 44 960; email: elzat.mamutalieva@ifrc.org.
- Jeremy Francis, regional logistics coordinator, phone: +603 9207 5753, fax: +603 2168 8573, email: jeremy.francis@ifrc.org.
- Penny Elghady, resource mobilization and PMER coordinator, phone: +603 9207 5775, email: penny.elghady@ifrc.org.
- Please send all funding pledges to zonerm.asiapacific@ifrc.org.
- For media enquiries: Jason Smith, zone communications manager, mobile: +6012 387 0829, email: jason.smith@ifrc.org.

[<DREF budget and map below; click here to return to the title page>](#)

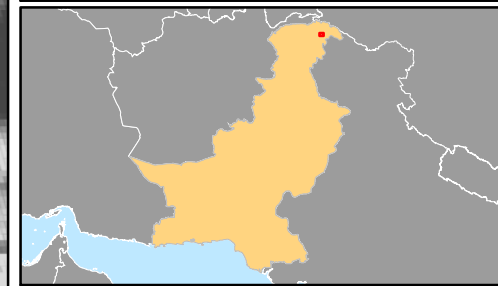
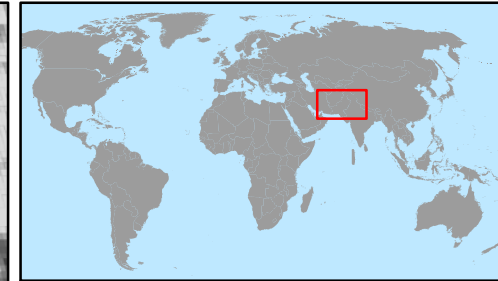
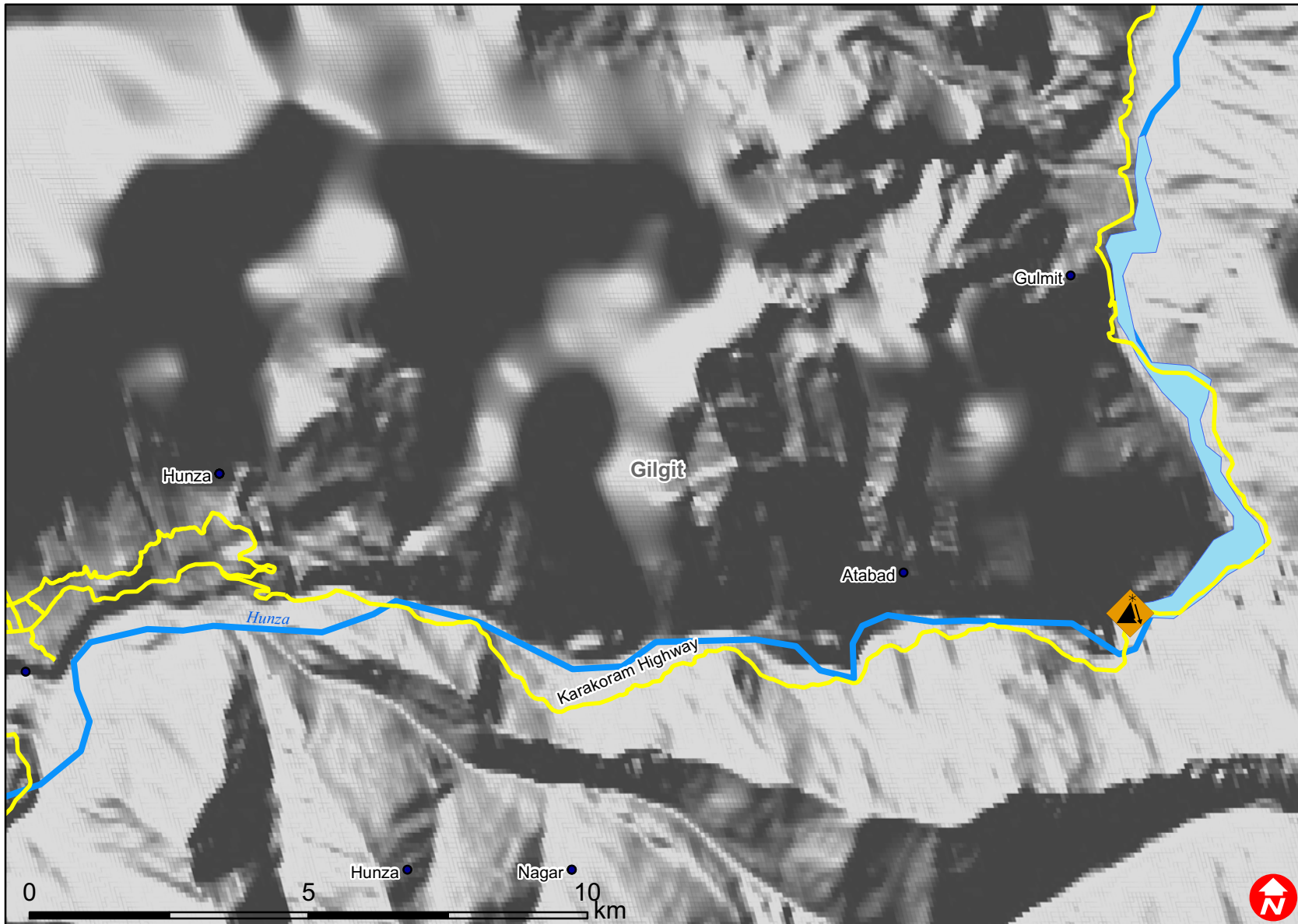
Pakistan: Hunza Landslides & Floods

DREF BUDGET SUMMARY

Budget Group	Total Budget CHF
Shelter - Relief	93,000
Water & Sanitation	14,619
Medical & First Aid	25,000
Teaching Materials	2,500
Other Supplies & Services & Cash Disbursements	4,500
Total Supplies	139,619
Storage	5,120
Distribution & Monitoring	16,000
Transport & Vehicle Costs	2,300
Total Transport & Storage	23,420
National Society Staff	1,800
Total Personnel	1,800
Workshops & Training	3,168
Total Workshops & Training	3,168
Travel	1,500
Information & Public Relation	4,000
Communications	1,200
Other General Expenses	1,000
Total General Expenditure	7,700
Program Support	11,421
Total Programme Support	11,421
TOTAL BUDGET	187,128



Pakistan: Hunza landslide and floods



- Places
- ▲ Landslide
- Highway