

# DREF operation



International Federation  
of Red Cross and Red Crescent Societies

## Iraq: Flash Floods

DREF operation n° MDRIQ004  
GLIDE n° FF-2011-000049-IRQ  
23 May, 2011

The International Federation of Red Cross and Red Crescent (IFRC) Disaster Relief Emergency Fund (DREF) is a source of un-earmarked money created by the Federation in 1985 to ensure that immediate financial support is available for Red Cross and Red Crescent emergency response. The DREF is a vital part of the International Federation's disaster response system and increases the ability of National Societies to respond to disasters.

**CHF 165,385 has been allocated from the IFRC's Disaster Relief Emergency Fund (DREF) to support the National Society in delivering immediate assistance to some 1000 beneficiaries. Unearmarked funds to repay DREF are encouraged.**

**Summary:** In 22 April, 2011 heavy rains started to fall in different areas in Iraq and continued for more than 35 hours, causing floods and sever damages to several governorates. Most of the houses were destroyed due to poor infrastructure. The risk remains high with the potential for more flash floods due to snow melting. This operation aims mainly to cover the urgent needs of the families affected by the floods.

This operation is expected to be implemented over 3 months, and will therefore be completed by 5 August, 2011; a Final Report will be made available three months after the end of the operation (by 5 November, 2011).



In April 2011, Iraqi Red Crescent Society urgently distributed food and non food items after the flash floods and opened a camp for the IDPs , photo: IRCS

Even though it was initially planned to launch an emergency appeal, due to further situation analysis and impact assessment of the flash floods it has been advised to keep the scale of the current response within the scope of a DREF operation. It has taken some days to get a clearer picture of needs and analyse the best course of action, which explains the time difference between the DREF allocation and the posting of bulletin. If further floods occur, a second DREF allocation or an emergency appeal will be launched.

[<click here for the DREF budget; here for contact details; here to view the map of the affected area>](#)

## The situation

In 22 April, 2011 heavy rains started to fall in different areas in Iraq and continued for more than 35 hours, causing floods and sever damages to several governorates. "The incessant rains led to massive flooding, the biggest in the area in more than ten years," according to officials.

During three hours of rain in Erbil, 62 millimeters of water affected more than 6 areas (Glikand, Setaqan, Tayrawa, Azadi, Minara and Badawa); where due to a stream of heavy rain hundred of houses in Erbil have been plunged in flood, not to mention that cars stalled in water on the main streets. In addition to that, water also entered Erbil's Azadi Badawa and Daratoo power stations; where all three stations were turned off temporarily, leaving some neighborhoods temporarily without electricity. Rains also affected Suliemaniya, Nineveh, Dohuk , Salahaddin and Karbala governorates.

In Kerbala, sand storms coming from the western desert was accompanied by heavy rains, and it caused floods in the streets and the fall down of many palm trees and other damages.

While all governorate have suffered from damages, but Nineveh seems to be the most affected; where in Sinjar (124 km west of Nineveh) around 400 houses were totally damaged due to strong wind accompanied by heavy rains resulting in flash floods. Most of the houses are made of clay or were not constructed properly (i.e.; they do not have strong structure), or they were located on low lands. Plus; in some places the sewerage system couldn't cope with the volume of water.

Six persons were killed and one person in critical condition (he is receiving medical care now in one of the Syrian border villages where he was drifted by the water flows and found by the Syrians inside their border). Five persons were missing (three of them are children) due houses' collapse.

## Coordination and partnerships

- IRCS has not been acting alone during the immediate response activities; where the local Mukharts ( the selected Mayors) have participated actively in providing the much needed networking input. While on the other hand; the local authorities (for instance the civil defense, the army, the engineering departments in the offices of Irrigation, Roads and Bridges and Agriculture) have played a significant role in supporting, coordinating and delivering updated information, engineering services. The Army and Police secured the areas affected by the floods which made the access much safer for IRCS relief teams.
- IOM has distributed - in coordination with UNHCR and UNICEF- NFIs and hygiene kits.
- UNHCR has been present and has distributed NFIs ( mainly tents) for 60 families. The following media link shows some of the damaged houses and the role of UNHCR: (<http://www.youtube.com/watch?v=S7tudNp6vPE>)
- The coordination activities: IRCS, IFRC and ICRC are closely coordinating their activities and sharing updated information.

## Red Cross and Red Crescent action

•The Iraqi Red Crescent Society established emergency room in the headquarters under the supervision of the National society President consists of:

- Disaster management department.
- Logistics department.
- Department of Health.
- Department of Public Information.
- Tracing department.
- War remains Awareness department.

Emergency rooms were established in IRCS branches for more close coordination between the branches and headquarters.

Iraqi Red Crescent Society carried out rapid needs assessment and the result came as follows:



Iraqi Red Crescent Society relief teams deployment in the affected areas. , photo: IRCS

- In Nineveh about 515 houses were affected and 7 persons were killed; while in Saladin 25 houses have been destroyed, large numbers of people affected and 1 person was killed, while in Kerbala -on the other hand- 22 houses were destroyed and yet 350 houses were damaged in Zakhoo. In addition to IDPs from Rabieh area which is far 450 KM from Baghdad. The affected families are accommodated in temporary shelters like schools and governmental buildings.

The number of persons are being assisted by IRCS is 1000, while the number of the affected persons is 9,000 (the average of 1,500 families) and the number of the IDPs is 2,400 persons.

- In Sinjar IRCS has already provided assistance to the affected areas (blankets, food parcels, stoves, tarpaulin sheets, kitchen sets, tents, hygiene kits ...), in addition to erecting 150 tents and providing the families with 150 food parcels and 150 mattresses. Beneficiaries were 900 persons (150 families).

IRCS provided psychological support for families exposed to the floods, as a part of primary health care services they provided.

Branch	Volunteers	Members	Staff
<b>Nineveh</b>	15	----	46
<b>Dohuk</b>	18	14	---
<b>Salah al-Din</b>	17	14	---
<b>Karbala</b>	5	---	15

IRCS human resources response to the flash floods

## The needs

### Beneficiary selection:

The number of beneficiaries who will be targeted is (around 1,000 persons); where 22% are elderly people, 33% are women 40% children and 5% men. This includes the direct 1000 supported persons.

Since there are about 450 IDPs from Rabieh, so those will be targeted for receiving immediate assistance, in addition to the families who's houses have been damaged.

During the following day, some numbers of the affected houses have increased due to continuation of rains and to the failure of old sewerage systems causing more water to seep inside houses.

In addition to that, the season has not ended yet. More rain is expected soon and, some of the neighbouring countries are expected to open their water dams at some point (snow is in the melting phase now) so as to avoid floods in their countries too. That scenario takes place repeatedly almost every other year.

### Immediate needs:

The immediate operational requirements include non-food relief items, food parcels, first aid kits, tents, temporary warehouses. Simultaneously with the ongoing emergency response operations there are immediate needs and activities to strengthen the disaster preparedness and contingency planning capacities of the IRCS directly.

## The proposed operation

This operation is being planned on the basis of primary assessment data. Efforts to assess needs and plan appropriate response are being scaled up.

The bulk of the operation will aim at providing support to the populations who have been affected directly due to heavy floods and IDPs. In addition, the operation will increase the capacities of IRCS to respond more effectively to similar emergencies.

<b>Relief distributions (food and basic non-food items)</b>	
<b>Outcome: The provision of minimum standards in order to stay alive, according to priority and processing the simplest daily needs</b>	
<b>Outputs (expected results)</b>	<b>Activities planned</b>
Up to 1,000 people are directly provided with appropriate food	<ul style="list-style-type: none"> <li>• Distribution of food parcels to the affected families.</li> <li>• Provide the affected families with the most needs NFIs (kitchen</li> </ul>

Rations and essential NFI	sets, blankets, sanitary items, kerosene lamps, tarpaulins, and stoves... )
---------------------------	---

### Emergency shelter

<b>Outcome: The immediate sheltering needs of the affected population are met.</b>	
<b>Outputs (expected results)</b>	<b>Activities planned</b>
Up to 1,000 people are provided with temporary shelter assistance and basic Household items.	<ul style="list-style-type: none"> <li>• Distribution of shelter materials and basic household items including: tents, blankets, and mats.</li> <li>• Erection of temporary shelter.</li> </ul>

### Emergency health and care

<b>Outcome: The immediate health risks of the affected population are reduced through the provision of first aid and emergency medical services.</b>	
<b>Outputs (expected results)</b>	<b>Activities planned</b>
Up to 1,000 people are provided with rapid medical management of injuries and Diseases.	<ul style="list-style-type: none"> <li>• Provide medical care and first aid supplies.</li> <li>• Provision of first aid services.</li> </ul>

### Water, sanitation, and hygiene promotion

<b>Outcome: The risk of waterborne and water related diseases has been reduced through the Provision of safe water and adequate sanitation.</b>	
<b>Outputs (expected results)</b>	<b>Activities planned</b>
Up to 1,000 people are provided with safe water, adequate sanitation, and Hygiene items.	<ul style="list-style-type: none"> <li>• Distribution of water and hygiene items.</li> <li>• Erection of temporary latrines in the camp</li> </ul>
Safe water is provided to 1,000 families as damaged systems are restored.	<ul style="list-style-type: none"> <li>• Distributing water jerry cans to affected families.</li> </ul>

### Logistics

<b>Outcome: The supply chain from arrival of relief items, including local procurement, storage and forwarding to distribution, is effectively managed.</b>	
<b>Outputs (expected results)</b>	<b>Activities planned</b>
Program receives professional logistics support and goods are procured and received for distribution as planned following IFRC logistics and procurement procedures	<ul style="list-style-type: none"> <li>• procurement activities will be implemented by the Federation and according to IFRC procurement procedures</li> <li>• Monitor and evaluate the relief activities and provide reporting on relief distributions.</li> <li>•</li> </ul>
Contingency stocks for up to 8000 persons are pre - positioned in IRCS warehouses	<ul style="list-style-type: none"> <li>• Procured essential NFIs (kitchen sets, blankets, sanitary items, kerosene lamps, tarpaulins, and stoves...) and stored in IRCS warehouses</li> </ul>

### How we work

All IFRC assistance seeks to adhere to the [Code of Conduct for the International Red Cross and Red Crescent Movement and Non-Governmental Organizations \(NGO's\) in Disaster Relief](#) and the [Humanitarian Charter and Minimum Standards in Disaster Response \(Sphere\)](#) in delivering assistance to the most vulnerable.

The IFRC's vision is to inspire, encourage, facilitate and promote at all times all forms of humanitarian activities by National Societies, with a view to preventing and alleviating human suffering, and thereby contributing to the maintenance and promotion of human dignity and peace in the world.

The IFRC's work is guided by Strategy 2020 which puts forward three strategic aims:

1. Save lives, protect livelihoods, and strengthen recovery from disaster and crises.
2. Enable healthy and safe living.
3. Promote social inclusion and a culture of non-violence and peace.

## Contact information

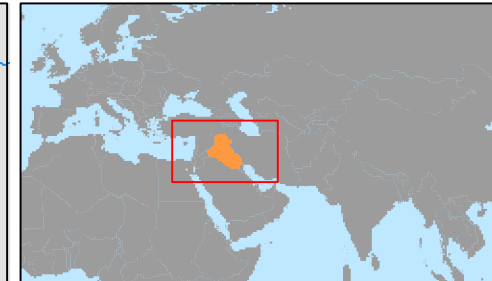
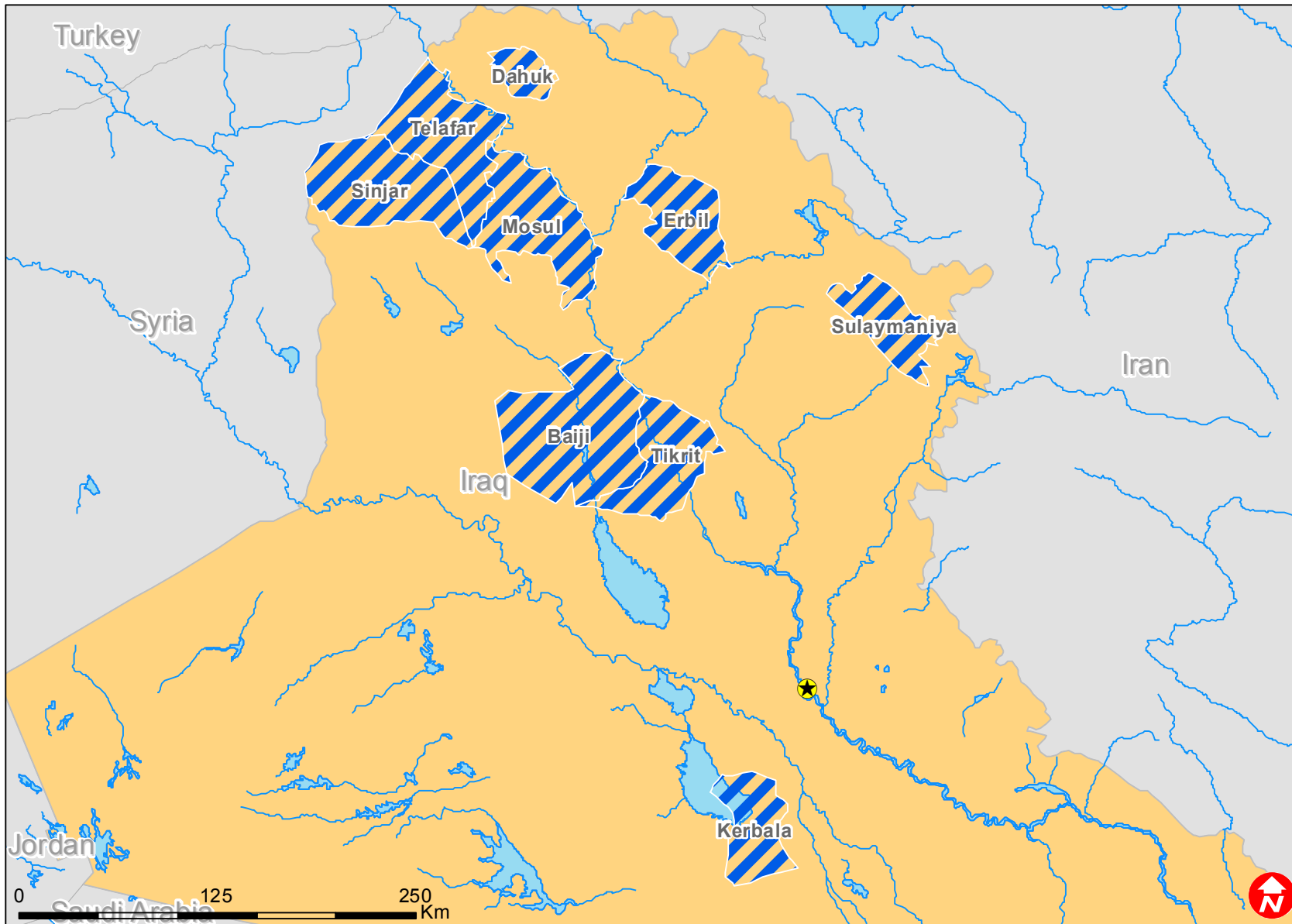
**For further information specifically related to this operation please contact:**


- In the Iraq National Society: Name, Dr. Yassin Abbas, President of the Iraqi Red Crescent Society; phone: +964 790 1111185; email: [ircs\\_int\\_dep@yahoo.com](mailto:ircs_int_dep@yahoo.com)
- In Iraq and Jordan: Laith Abbas, Acting Federation Representative, Iraq Representation; phone: +962 799 996 859 and +964 790 1922 410; email: [laith.abbas@ifrc.org](mailto:laith.abbas@ifrc.org)
- In Jordan : Dr. Manhal Annaz, Acting head of programme services/operation, MENA Zone office ; phone: +962 6 5694911 4113 ; Fax: +962 6 5694556; email: [Manhal.Annaz@ifrc.org](mailto:Manhal.Annaz@ifrc.org)
- In Jordan : Dr. Hosam Faysal , disaster management coordinator , MENA Zone office ; phone: +962 65694911 4113 ; Fax: +962 6 5694556; email: [hosam.faysal@ifrc.org](mailto:hosam.faysal@ifrc.org)
- In Geneva: Pablo Medina, Operation Coordinator Disaster Services Department; phone: +41 22 730 4381; fax: +41 22 730 0395; email: [pablo.medina@ifrc.org](mailto:pablo.medina@ifrc.org)

**[<DREF budget and map below; click here to return to the title page>](#)**



# Iraq: Flash floods



 Affected areas

**BUDGET SUMMARY**

Budget Group	DREF Grant Budget	TOTAL BUDGET CHF
Shelter - Relief		26,800
Shelter - Transitional		0
Construction - Housing		0
Construction - Facilities / Infrastructure		0
Construction - Materials		0
Clothing & Textiles		18,000
Food		40,000
Seeds & Plants		0
Water & Sanitation		16,500
Medical & First Aid		8,000
Teaching Materials		0
Ustensils & Tools		4,000
Other Supplies & Services & Cash Disbursements		12,000
<b>Total Supplies</b>	<b>0</b>	<b>125,300</b>
Land & Buildings		0
Vehicles		0
Computer & Telecom		0
Office/Household Furniture & Equipment		4,250
Medical Equipment		0
Other Machinery & Equipment		0
<b>Total Land, vehicles &amp; equipment</b>	<b>0</b>	<b>4,250</b>
Storage		0
Distribution & Monitoring		0
Transport & Vehicle Costs		0
<b>Total Transport &amp; Storage</b>	<b>0</b>	<b>0</b>
International Staff		0
Regionally Deployed Staff		0
National Staff		0
National Society Staff		25,000
Other Staff benefits		0
Consultants		0
<b>Total Personnel</b>	<b>0</b>	<b>25,000</b>
Workshops & Training		0
<b>Total Workshops &amp; Training</b>	<b>0</b>	<b>0</b>
Travel		0
Information & Public Relation		0
Office Costs		0
Communications		1,000
Professional Fees		0
Financial Charges		0
Other General Expenses		0
<b>Total General Expenditure</b>	<b>0</b>	<b>1,000</b>
Cash Transfers to National Societies		0
Cash Transfers to 3rd parties		0
<b>Total Contributions &amp; Transfers</b>	<b>0</b>	<b>0</b>
Program Support	0	9,835
<b>Total Programme Support</b>	<b>0</b>	<b>9,835</b>
Services & Recoveries		0
Shared Services		0
<b>Total Services</b>	<b>0</b>	<b>0</b>
<b>TOTAL BUDGET</b>	<b>0</b>	<b>165,385</b>