

DREF operation



International Federation
of Red Cross and Red Crescent Societies

Myanmar: Earthquake

DREF operation n° MDRMM004
GLIDE n° [EQ-2011-000031-MMR](#)
30 March 2011

The International Federation's Disaster Relief Emergency Fund (DREF) is a source of un-earmarked money created by the Federation in 1985 to ensure that immediate financial support is available for Red Cross and Red Crescent response to emergencies. The DREF is a vital part of the International Federation's disaster response system and increases the ability of national societies to respond to disasters.

CHF 157,540 has been allocated from the IFRC's Disaster Relief Emergency Fund (DREF) to support the Myanmar Red Cross Society (MRCS) in delivering immediate assistance to some 1,500 households (7,500 beneficiaries) for three months. Un-earmarked funds to replenish the DREF are encouraged.

Summary: An earthquake of magnitude 6.8 on the Richter scale and of a 10 km depth struck the Eastern State of Shan in Myanmar at 20:29:30 (local time) on 24 March 2011. As of Sunday, 27 March, evening since the earthquake struck, a total of eight aftershocks have been reported from affected areas. The risk of landslides remains high. The latest official number of casualties currently stands at 74 deaths and 125 people injured. According to the Relief and Resettlement Department of the government, the number of damaged houses has increased from 224 to 305, including a number of government buildings, and the figure may change as assessment continues.

The Myanmar Red Cross Society (MRCS) two-member rapid assessment team is on the ground and working in coordination with the authorities as well as other actors. The government has announced it will share a comprehensive assessment of the situation. The coordination with the local authorities is reported as well-established. The Tarlay Sub-Township Relief Committee, established by the government, has estimated the cost of damage caused by the earthquake to be approximately MMK 3 billion (approximately CHF 436 million or USD 475 million¹).

This operation is expected to be implemented over three months, and will be completed by 30 June 2011; a final report will be made available three months after the end of the operation i.e. by end-September 2011.

[<click here for the DREF budget, contact details, or a map of the affected area>](#)

The situation

On 24 March 2011, an earthquake of magnitude 6.8 on the Richter Scale with a depth of 10 km struck the southern parts of Shan State (population: 3,870,921) in the east of the Union of Myanmar - approximately 483 km southeast of the Mandalay seismological observatory. It was recorded at 20:29:30 hrs (local time). The earthquake was reportedly felt for at least three minutes.

The epicentre is estimated to be located in the southern part of Shan State at the following coordinates: 20.705°N, 99.949°E which is close to the border between Myanmar, Thailand (south) and Lao PDR (east).

¹ Exchange rates are indicative only.

Six aftershocks have been reported from affected areas. The risk of landslides remains high. According to initial information from partners, villages in Tarlay sub-township (located in Tacheleik township), including Mong Lin (west), Mong Lin (east) and Naryaung village tracts, are among the most affected, with significant infrastructure damage. Tacheleik township is located near the border with Thailand and Lao PDR - 47 km from the epicentre, 1,292 km north east of Yangon and 940 km east of the capital city of Naw Pyi Taw.

The latest official number of casualties currently stands at 74 deaths and 125 injuries. According to the Relief and Resettlement Department of the government, the number of damaged houses has increased from 224 to 305, including a number of government buildings. This figure may change as assessment continues in more remote areas. One 16-bed rural hospital in Tarlay, 31 religious buildings, and 11 schools have been damaged. Some disruption of basic facilities, including electricity, water supply and telecommunications in the affected areas is also reported. Initial joint NGO assessments indicate that around 15,588 people are affected and most of them are currently living in open spaces.

Access to the affected area does not appear to be a problem, though travel authorization must be obtained from the relevant authorities to enter the area. The estimated travel times include four days by road to the affected areas; currently, domestic flights still operate twice a week to Tacheleik's airport.

UNICEF has provided the Inter agency Emergency Health Kit (IEHK) to the affected areas, and World Vision is providing support with water.

A donation centre has been set up by the General Administrative Department (GAD), fire fighting unit and MRCS at Tarlay sub-township. Local community members are also assisting the affected people. A relief committee has also been set up by the government in Tarlay sub-township. The Tarlay sub-township relief committee, established by the government, has estimated the damage of the earthquake at approximately MMK 3 billion (approximately CHF 436 million or USD 475 million).

Coordination and partnerships

MRCS and IFRC held a series of meetings to organize the systematic assessment as well as immediate response to this earthquake. MRCS has called a coordination meeting of Red Cross and Red Crescent Movement partners in-country on 29 March to analyze the situation and discuss the future plan of action. IFRC is a member of the Humanitarian Country Team (HCT) of the UN and the International Non-Governmental Organizations (INGO) Forum. It closely coordinates with UN agencies as well national and international non-governmental organizations at Yangon level.

Many international humanitarian agencies such as World Food Programme (WFP), UNICEF, World Vision, Save the Children Fund and others are on the ground. MRCS is in touch with national and international media as well.

The UN Resident Coordinator/Humanitarian Coordinator (RC/HC) remains in contact with the government and MRCS. The RC/HC had a meeting with key partners and donors on 26 March in Yangon. A relief committee has been set up by the government in Tarlay sub-township to support emergency coordination. In the field, partners are encouraged to also coordinate with MRCS and UNICEF. Key documents on this emergency are uploaded on Relief Web [here](#).

Geographically, Myanmar lies in the southern part of the Himalayas, and is exposed to major earthquakes. The country is earthquake-prone as it lies in one of the two main earthquake belts of the world, known as the Alpide Belt² that extends through Turkey, Iran, Afghanistan, the Himalayas, and Myanmar to finally Indonesia.

According to the Myanmar Action Plan for Disaster Risk Reduction (MAPDRR) 2009-2015 (August 2009), at least 18 large earthquakes have happened along the central lowlands through which the Sagaing fault passes. This earthquake in March 2011 is already the third earthquake affecting Myanmar since the beginning of this year; the other two were one with magnitude 6.4 on 4 February 2011, and another one with a scale of 5.4 on 10 March 2011 with the epicentre in Yunnan Province, China.

Red Cross and Red Crescent action

The Myanmar Red Cross Society (MRCS) has a stock of 1,000 packages of family kits as part of the disaster preparedness (DP) stock system in Shan State that was mobilized from its State Red Cross branch by the next day following the earthquake. It has distributed 500 family kits to 500 families. MRCS has also deployed two staff members to the affected township for assessment and coordination as well as relief management. MRCS is also moving forward to distribute 300 family tents. The national society is distributing 600 relief packages² and 600 cleaning kits with the support of UNFPA.

MRCS has mobilized more than 25 trained volunteers to carry out field assessment, relief activities, first aid and psychosocial support. It has mobilized assessment teams to collect information jointly with others and provide initial assistance. With support from the IFRC team in-country, MRCS is presently monitoring the situation. Access to the affected area does not appear to be a problem for national staff, but travel authorization must be obtained for international staff from the relevant authorities to enter the area. The estimated travel times include four days by road; there are domestic flights twice a week to Tacheleik's airport.

The IFRC country office in Myanmar supports MRCS in field assessments, data collection, and operational planning in various sectors. Its office in Yangon is currently focusing on coordination among the various humanitarian actors, and support for the national society in assessments and other components of relief. The IFRC's Asia Pacific zone office in Kuala Lumpur and its Southeast Asia regional office in Bangkok are also assisting the situation with technical support, and liaising with the media.

The IFRC regional logistics unit in Kuala Lumpur has available stock of emergency items such as blankets, hygiene kits, and kitchen sets, which can be dispatched to the affected areas immediately, upon request.

The needs

The overall needs will be determined as soon as the ongoing rapid needs assessments are completed. However, reports from MRCS branches and humanitarian agencies working in the field have indicated that food, water and sanitation, and shelter, are the most urgent needs of affected communities. MRCS will continue its detailed assessment. The MRCS's proposed operation has been designed on the basis of these needs. Based on the impact of the disaster, urgent needs identified, and the capacity of its branches in the affected areas, MRCS has decided to target the most affected households (who lost their homes and belongings completely) and displaced families in evacuation centres, and assist them through the distribution of non-food items.

Upon coordination with other organizations like World Vision which are addressing water and sanitation needs, and cleaning wells and water sources, it is suggested that MRCS may focus on other sectors.

The proposed operation

This DREF operation aims to meet the immediate needs of 1,500 most affected households (who have completely lost their homes and belongings) and displaced families in evacuation centres. Red Cross support will focus on the distribution of non-food items such as kitchen sets, blankets, tarpaulins and fixing materials/rope, clothes and mosquito nets.

The DREF operation will be conducted in Shan (East) and beneficiaries will be selected in the most affected areas. Based on the findings of the ongoing assessments, MRCS will determine the precise nature and extent of needs in the affected areas and fine-tune the future plan of action. Detailed needs assessments will continue to inform and facilitate the fine-tuning of the plan of action.

Activities planned:

- Engage MRCS branches in affected townships in immediate assessments in the field.
- Distribute an additional 1,000 family packages from their stocks (further to the 500 families assisted).
- Improve residential conditions and individual privacy in the evacuation centres
- Coordinate with local authorities and various agencies involved in assessments.
- Develop a concrete plan of action based on findings of assessment reports.

² underwear (1), sanitary napkin (1 package), blouse/T-shirt (1), women's longyi (1), nail clipper (1), slippers (1 pair), comb (1 pc), shampoo (5 sachets), soap (1 bar), bag (1 pcs)

- Support MRCS in conducting assessments according to the relevant guidelines.
- Assist MRCS in the collection, analysis and compilation of data and operational planning.

Relief distributions (basic non-food items)

Objective: 1,500 families (7,500 people) who are the most affected households (i.e. who have lost their homes and belongings completely), or those displaced in evacuation centres, are supplied non-food items to match their emergency needs.

Activities planned:

- Set clear beneficiary selection criteria and define distribution protocols.
- Mobilize trained staff members as well as trained volunteers for beneficiary selection and relief distribution.
- Dispatch additional 1,000 non-food packages from MRCS warehouses.
- Monitor the distribution of relief items.
- Review the impact of the assistance.
- Replenish 1,500 non-food relief packages comprising kitchen sets, blankets, tarpaulins, materials and tools for house repair, clothing materials and mosquito nets through either local, regional or international procurement/sourcing options (with necessary support from the regional logistics unit based in Kuala Lumpur) following IFRC procurement procedures.
- Improve residential conditions and individual privacy in the evacuation centres
- Develop a plan for follow-up action.

How we work

All International Federation assistance seeks to adhere to the [Code of Conduct for the International Red Cross and Red Crescent Movement and Non-Governmental Organizations \(NGOs\) in Disaster Relief](#) and is committed to the [Humanitarian Charter and Minimum Standards in Disaster Response \(Sphere\)](#) in delivering assistance to the most vulnerable.

IFRC's vision is to inspire, encourage, facilitate and promote at all times all forms of humanitarian activities by National Societies, with a view to preventing and alleviating human suffering, and thereby contributing to the maintenance and promotion of human dignity and peace in the world.

IFRC's work is guided by [Strategy 2020](#) which puts forward three strategic aims:

1. Save lives, protect livelihoods, and strengthen recovery from disaster and crises.
2. Enable healthy and safe living.
3. Promote social inclusion and a culture of non-violence and peace.

Contact information

For further information specifically related to this operation please contact:

- Myanmar Red Cross Society
 - Prof Dr Tha Hla Shwe, president, e-mail: president@redcross.org.mm, phone: +951 383 681, fax: +951 383 685.
- IFRC country office, Myanmar
 - Bernd Schell, head of country office, e-mail: ifrcmm01@redcross.org.mm, phone and fax: +951 383 686, 383 682.
 - Chang Hun Choe, programme coordinator, email: ifrcmm12@redcross.org.mm, phone and fax: +951 383 686, 383 682, mobile: +959 512 6221.
- IFRC Asia Pacific zone office, Kuala Lumpur (phone: +603 9207 5700, fax +603 2161 0670):
 - Al Panico, acting head of operations; email: al.panico@ifrc.org
 - Enkas Chau, operations coordinator, email: enkas.chau@ifrc.org; phone: +6012 3058332
 - Alan Bradbury, head of resource mobilization and PMER; email: alan.bradbury@ifrc.org,

phone: +603 9207 5775; fax: +603 2161 0670

Please send all pledges of funding to zonerms.asiapacific@ifrc.org

- Jeremy Francis, regional logistics coordinator; email: jeremy.francis@ifrc.org;
phone: +6012 298 9752; phone: +603 9207 5753; fax: +603 2168 8573;
- Patrick Fuller, communications manager, email: patrick.fuller@ifrc.org;
phone: +6012 230 8451

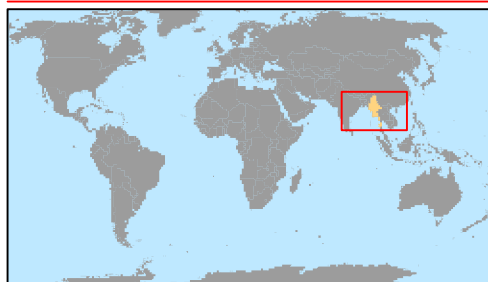
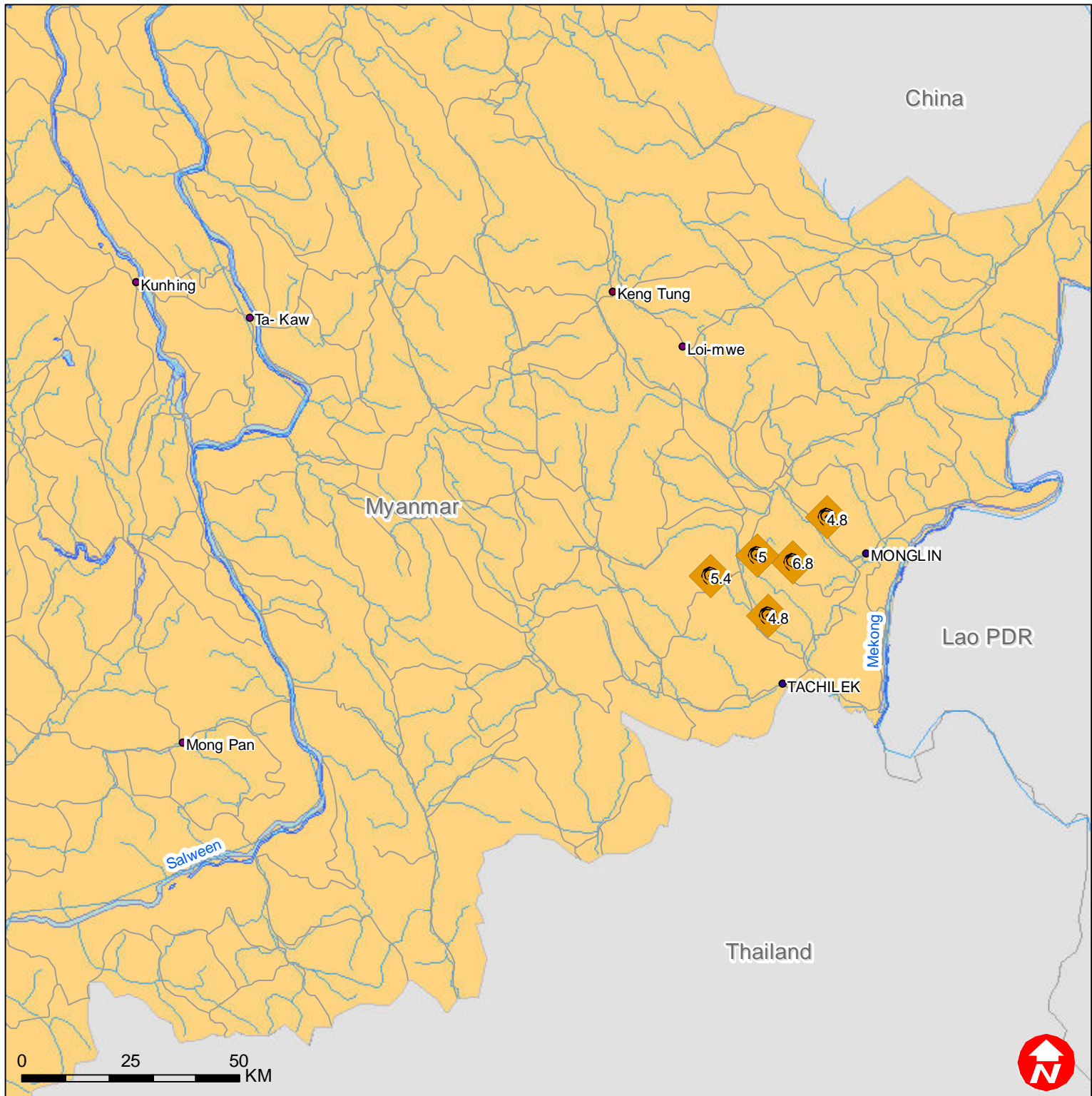
[<DREF budget and map below; click here to return to title page>](#)

MDRMM004 - MYANMAR EARTHQUAKE**DREF BUDGET SUMMARY**

Budget Group	DREF Grant Budget	TOTAL BUDGET CHF
Shelter - Relief	48,000	48,000
Clothing & Textiles	57,000	57,000
Utensils & Tools	15,000	15,000
Total Supplies	120,000	120,000
Distribution & Monitoring	18,750	18,750
Total Transport & Storage	18,750	18,750
National Society Staff	5,350	5,350
Total Personnel	5,350	5,350
Travel	2,250	2,250
Communications	1,575	1,575
Total General Expenditure	3,825	3,825
Programme Support	9,615	9,615
Total Programme Support	9,615	9,615
TOTAL BUDGET	157,540	157,540



Myanmar: Earthquake



-  Earthquakes
-  Roads