

www.ifrc.org
Saving lives,
changing minds.

Disaster relief emergency fund (DREF) Senegal: Food Insecurity

 International Federation
of Red Cross and Red Crescent Societies

DREF operation n° MDRSN007
GLIDE n° OT-2011-000193-SEN
28 December, 2011

The International Federation of Red Cross and Red Crescent (IFRC) Disaster Relief Emergency Fund (DREF) is a source of un-earmarked money created by the Federation in 1985 to ensure that immediate financial support is available for Red Cross and Red Crescent emergency response. The DREF is a vital part of the International Federation's disaster response system and increases the ability of National Societies to respond to disasters.

CHF 166,428 has been allocated from the IFRC's Disaster Relief Emergency Fund (DREF) to support the Senegalese Red Cross Society (SRCS) in delivering immediate assistance to some 1,000 households. Un-earmarked funds to repay DREF are encouraged.

Summary: Over five hundred thousand people are food insecure in Senegal. The north-east and central areas of Senegal are most affected by the poor rainy season and resulting drought. According to joint assessment conducted by the National Council of Rural Executives (CNCR), FAO, WFP, the SRCS and NGOs, 21 departments in 7 regions have been severely affected and need immediate food assistance and support. They include the regions of Kaffrine, Kedougou, Tambacounda, Louga, Linguère, Saint Louis and Matam.

Based on the situation, this DREF request focuses on providing support and assistance for six of the most affected departments (Saint Louis, Podor, Matam, Ranérou, Kanel and Dagana). Food assistance is urgently needed for the identified 500 most food insecure households in 3 departments (Matam, Ranérou and Dagana). A total of 200 households in Kanel and in Podor will receive unconditional cash grants targeting female-headed households. Other activities will also be included in this DREF focusing on improving food production in the affected community through agricultural inputs (fertilizer and seeds), farming tools (hoes, machetes, axes and shovels) in rural zone of Saint Louis (300 households). A total of 1,000 farming households will be reached, equating to some 7,600 beneficiaries.

This operation is expected to be implemented over 3 months, and will therefore be completed by 31 March 2012; a Final Report will be made available three months after the end of the operation (by 30 June 2012).

[<click here for the DREF budget; here for contact details; here to view a map of the affected area>](#)

The situation

The West of Africa Region is currently facing a very serious food and nutrition crisis in terms of both scale and severity. According to the United Nations, more than 10 million people are in need of humanitarian assistance in West Africa as well as in some parts of Central Africa.

The West Africa food security crisis, due to a poor rainy season and subsequent drought, has also hit a significant number of regions and departments in Senegal. Over five hundred thousand people are food insecure in the country. The north-east and the central areas of Senegal are most affected by the drought. Pastoralists have been forced to send their livestock toward the south hoping to find better pasture and water while lowland farmers experienced major production losses of maize, millet, rice and nuts. Given the well-known dependence on rain-fed production, this drought is seriously affecting household food security, generating an immediate need for food assistance.

Most lowland farmers and pastoralists usually suffer from annual food shortage before the rainy season. Drought is chronic in several locations in north and central Senegal; for the past two years, crop production has been in many instances below normal; and a major drought since 2010 killed around 35% of the

livestock. Further due to the severity of the drought a majority of the affected households have resorted to selling parts of their assets including livestock, bicycles, radios and other movable items as a last resort coping mechanism. This is affecting their livelihoods and hence the need to reinforce their ownership of productive assets. The fragile food security situation of these populations and this year's drought will aggravate the poor nutritional status characterizing most lowland farmers and pastoralists in the affected areas.

At the same time, the government National Council of Rural Executives (CNCR), in collaboration with the UN, the SRCS and NGOs launched a food security and nutrition assessment in order to identify the food and nutrition insecure and vulnerable populations resulting from food availability, accessibility and utilization problems, in order to establish the magnitude of the problem, and to determine and recommend appropriate interventions for the affected populations. The assessment found

According to an assessment conducted by FAO, WFP, and the National Council of Rural Executives (CNCR), 21 departments in 7 regions were confirmed to have been severely affected and in need of immediate food assistance. They include Kaffrine, Diourbel, Kedougou, Tambacounda, Kaolack, Linguère, Dagana, Ranérou, Saint Louis, Matam etc. The affected areas are characterized as among the poorest and most food insecure in Senegal, and are also geographically remote. Two livelihoods groups are mainly affected by the current situation: lowland agro-pastoralists (mainly in Senegal River Basin) and pastoralists (mainly in the dry Ferlo climatic zone in central Senegal). Most vulnerable groups are characterized by a high reliance on self-produced food and few alternative means of livelihood. The most food insecure villages following the drought are the lowland villages that rely mostly on farming and agro-pastoral activities, are far away from markets, have poor road access and reduced labour opportunities.

In some areas, high food prices are the major hurdle for poor households to access food. The poor harvest, combined with high food demand from Dakar, increased transportation costs, inflation and high agricultural input prices has led to significant increases in the prices of food commodities. While major markets may report no problems of food availability, markets prioritize urban areas and there is shortage of food in local markets in some rural areas.

It is anticipated that food insecurity will intensify towards the next counter-season (between December and March). The already scarce millet, rice, nuts, maize and beans stocks will be depleted and, as is usual in the lean season, millet, rice and nuts prices will rise to even higher levels than the current prices. Casual labour will also be more difficult to find. The situation will be especially troublesome for villages with poor road access. The result will be greater food insecurity in both extent and severity. Hunger could result for the most vulnerable groups. If assistance is not provided soon, the situation is likely to worsen. As counter-season cultivation approaches, many affected farmers will divert their attention to finding food and income. It was observed that the community had shortage of seed stocks due to previous poor harvest. Normally, the community keeps part of the harvest for seeds. Therefore, it is feared that affected farmers will not have available time or seed to plant (between December and March) for the next harvest. If the problem is not addressed, the negative impacts of the drought will therefore extend well into 2012.

Coordination and partnerships

The Senegalese Red Cross (SRCS) is working closely with the Government's Disaster Management Department as well as the Ministry of Agriculture, to provide relief assistance to the most vulnerable. The SRCS is a permanent member of the food security and nutrition assessment. Besides, several UN Agencies are present in Senegal, including FAO, UNICEF, WFP, UNFPA, WHO and UNHCR. The World Food Program (WFP) is undertaking school feeding programmes in targeted areas. UNICEF in Senegal is in close contact with SRCS and both look for nutrition interventions. The National Society is also closely coordinated with IFRC Regional Representation in Dakar that is providing technical and financial support in carrying out the initial need assessment.

Red Cross and Red Crescent action

Following the initial food security assessment in six food insecure departments across three regions, the IFRC Sahel Regional Representation Office in Dakar gave logistical and financial support to the National Society in developing this DREF in response to the identified needs. This DREF application seeks assistance for six departments (Saint Louis, Podor, Matam, Ranérou, Dagana and Kanel) where there are gaps in meeting current food and nutrition needs. Below is an outline of the needs and subsequent interventions to be conducted by the National Society.

| Cause of the intervention | Type of intervention | Primary target groups | Comments |
|--|--|---|---|
| Immediate action | | | |
| Shortage of rice, millet, nuts, maize and beans. | Two months in-kind distribution of food. | Household in severely affected villages | <ul style="list-style-type: none"> Targeting the most vulnerable HH in areas which are not well covered |
| Lack of seeds and agriculture tools for planting | Seed and agriculture tools distribution | Low-land farmers in affected villages | <ul style="list-style-type: none"> All affected small agro pastoralists in affected villages. |
| Medium and long term action | | | |
| Reduced purchase power for pastoralists. | Livestock improvement Programme. | Pastoralists in affected Villages (focusing on Ferlo region). | <ul style="list-style-type: none"> Water point for livestock Animal health intervention Breed improvement Community awareness focusing on livestock |
| Low food availability for remote communities | Crop production improvement programme | Irrigated farms in Highlands | <ul style="list-style-type: none"> Irrigation schemes Dry farming techniques training Fertilizer distribution |
| Further assessment needed | | | |
| Monitor (after 2 months) the impact of UN agencies and NGO's food assistance in all departments | | | |
| Assess the impact on nutrition. | | | |
| Monitor the situation in the affected areas as well as in other departments and provinces in order to respond in cases where the situation does not improve. | | | |

The needs

On the basis of the initial assessment three kinds of vulnerability were evident, based on access to markets and price levels, each suggesting a different kind of response:

- Food insecure areas, where food prices are higher and more volatile in the medium term (Matam, Dagana and Ranérou), where, for example, the price of shelled groundnuts has increased from 75 to 600 francs in the last year. Such areas can benefit from targeted food distribution.
- Areas with more stable prices, but an absence of cash or convertible assets to buy food (Podor and Kanel). These areas can benefit from targeted cash transfers.
- Households in areas with a viable planting season from December – March, but where agricultural inputs are scarce (mainly because they have been converted into cash or subsistence). Such households could benefit from agricultural inputs to help ensure a sufficient harvest and retention of seed stocks for the future.

The proposed operation

The proposed operation will address these different needs through a three pronged response:

First, food distribution to cover two months is proposed for targeted households in Matam, Dagana and Ranérou. The food aid basket will comprise cereals (maize and rice grain) and beans. Each household will receive a monthly ration of 15 Kg of rice and 15 Kg of maize and 7.5 Kg of beans. Food distribution will target 500 of the most food insecure households in Matam, Ranérou and Dagana departments.

Furthermore, cash distribution to 300 households will be conducted in Podor and Kanel. This will target vulnerable households already affected by drought, many of whom have had to sell their assets and who therefore require asset protection / replacement support and assistance in meeting household needs. This initiative will go a long way to helping vulnerable households (a group that includes female-headed

households, child-headed households, isolated individuals, and elderly people) in retaining important productive assets.

The 300 households will each receive a cash disbursement of CHF 200 for 2 months (CHF 100 per month). This amount has been established by estimating a household food basket of 56,000 francs (=100 USD) per month, based on a full food ration only, with food prices indexed to current speculation in the local markets for 7 people per household for 30 days. It may be adjusted based on further assessments.

Additionally, this DREF will support improving food production in affected communities through provision of agricultural inputs (fertilizer and seeds), non-food items and farming tools (hoes, machetes, axes and shovels). This process will be facilitated through SRCS agronomists in collaboration with the government agricultural extension services, emphasizing dry farming techniques and including sensitizing the community to engage in the cultivation of drought resistance crops, and improving local food storage facilities.

Relief distributions (food and non-food items)

| Outcome: Immediate needs for food, cash assistance and tools, seeds & fertilizer of 1,000 households (7,600 beneficiaries) from Saint Louis, Podor, Matam, Ranérou, Dagana and Kaneli are met for 2 months | |
|---|--|
| Outputs (expected results) | Activities planned |
| Appropriate food rations are distributed to 500 of the most vulnerable in Matam, Ranérou and Dagana departments. | <ul style="list-style-type: none"> • Develop beneficiary identification and targeting strategy and registration system to deliver intended assistance. • Local procurement, storage, transport, and distribution of 15 T maize, of 15 T rice and of 7.5 T beans (500 households—3,800 beneficiaries for 2 months). • Monitor distribution of food relief supplies to 500 households and control supply movements from point of dispatch to end user. • Monitor and evaluate the relief activities and provide reporting on relief distributions. |
| 300 households receive seeds, farming tools, and fertilizers in pre-determined quality and quantities for planting during December-March counter season | <ul style="list-style-type: none"> • Registration of target households for agricultural inputs support. • Local procurement, storage and transport of seeds, 4 T of millet, 8 T of nuts, 6 T of rice), 8 T of Urea fertilizer and farming tools including 300 pieces of hoes, 300 pieces of picks, 300 pieces of axes and 300 pieces of shovels. • Community sensitization meetings and training on best agricultural practices. • Develop beneficiary targeting strategy and registration system to deliver intended assistance. • Development of model farms in selected communities. • Distribution of seeds and fertilizers. |
| Cash transfers are provided to 200 of the most vulnerable households Podor and Kanel. | <ul style="list-style-type: none"> • Develop beneficiary identification and targeting strategy and registration system to deliver intended assistance. • Engage relevant stakeholders including banks to facilitate cash transfers. • Disburse funds to 200 most vulnerable households (female-headed households and elderly people). Each household will receive CHF 200 for the 2 months. • Community sensitization. • Monitor the disbursement. |

Contact information

For further information specifically related to this operation please contact:

- **Senegalese Red Cross Society:** Mamadou Sonko, Secretary General, phone: (office) +221 33.823.39.92 ; (Mobile) +22177.579.00.56; email: sonkomala@yahoo.fr
- **IFRC Regional Representation** Momodou Lamin Fye, Regional Representative ,Dakar phone:(Office) +221.33.869.36.41; (Mobile) +211.77.332.56.72; email: momodoulamin.fye@ifrc.org, Nathalie Bonvin, Regional Food Security, Nutrition and Livelihoods delegate phone:(Office) +221.33.869.36.33; (Mobile) +221.77.644.38.38; email: nthalie.bonvin@ifrc.org,
- **IFRC Zone:** Daniel Bolanos, Disaster Management Coordinator, Africa; phone: +27 (0)11 303 9735, mobile: +27 (0)835566911; email: daniel.bolanos@ifrc.org
- **Geneva:** Pablo Medina, Senior Officer, Operations Quality Assurance; phone: +41 22 730 4381; email: pablo.medina@ifrc.org
- **Regional Logistics Unit (RLU):** Kai Kettunen, Regional Logistics Delegate, phone +971 4457 2993, email: kai.kettunen@ifrc.org

For Resource Mobilization and Pledges:

- **IFRC Zone:** Pierre Kremer, Acting Head of Resource Mobilization; phone: +41 792264832; email: pierre.kremer@ifrc.org

For Performance and Accountability (planning, monitoring, evaluation and reporting)

- **IFRC Zone:** Robert Ondrusek, PMER/QA Delegate, Johannesburg; phone: +27.11.303.9744; email: robert.ondrusek@ifrc.org

Click here

1. DREF budget [below](#)
 2. Click [here](#) to return to the title page
-

How we work

All IFRC assistance seeks to adhere to the Code of Conduct for the International Red Cross and Red Crescent Movement and Non-Governmental Organizations (NGOs) in Disaster Relief and the Humanitarian Charter and Minimum Standards in Disaster Response (Sphere) in delivering assistance to the most vulnerable.

The IFRC's vision is to inspire, encourage, facilitate and promote at all times all forms of humanitarian activities by National Societies, with a view to preventing and alleviating human suffering, and thereby contributing to the maintenance and promotion of human dignity and peace in the world.

www.ifrc.org
Saving lives, changing minds.



The IFRC's work is guided by Strategy 2020 which puts forward three strategic aims:

1. Save lives, protect livelihoods, and strengthen recovery from disaster and crises.
 2. Enable healthy and safe living.
 3. Promote social inclusion and a culture of non-violence and peace.
-

DREF OPERATION

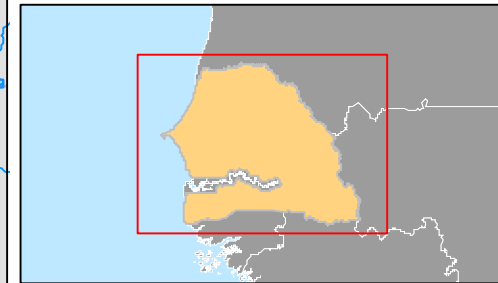
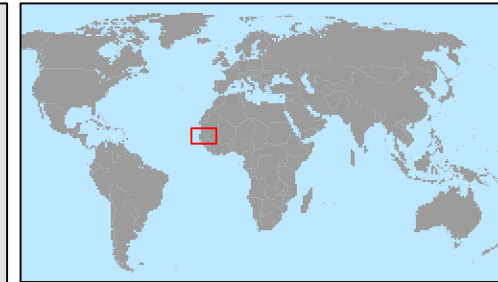
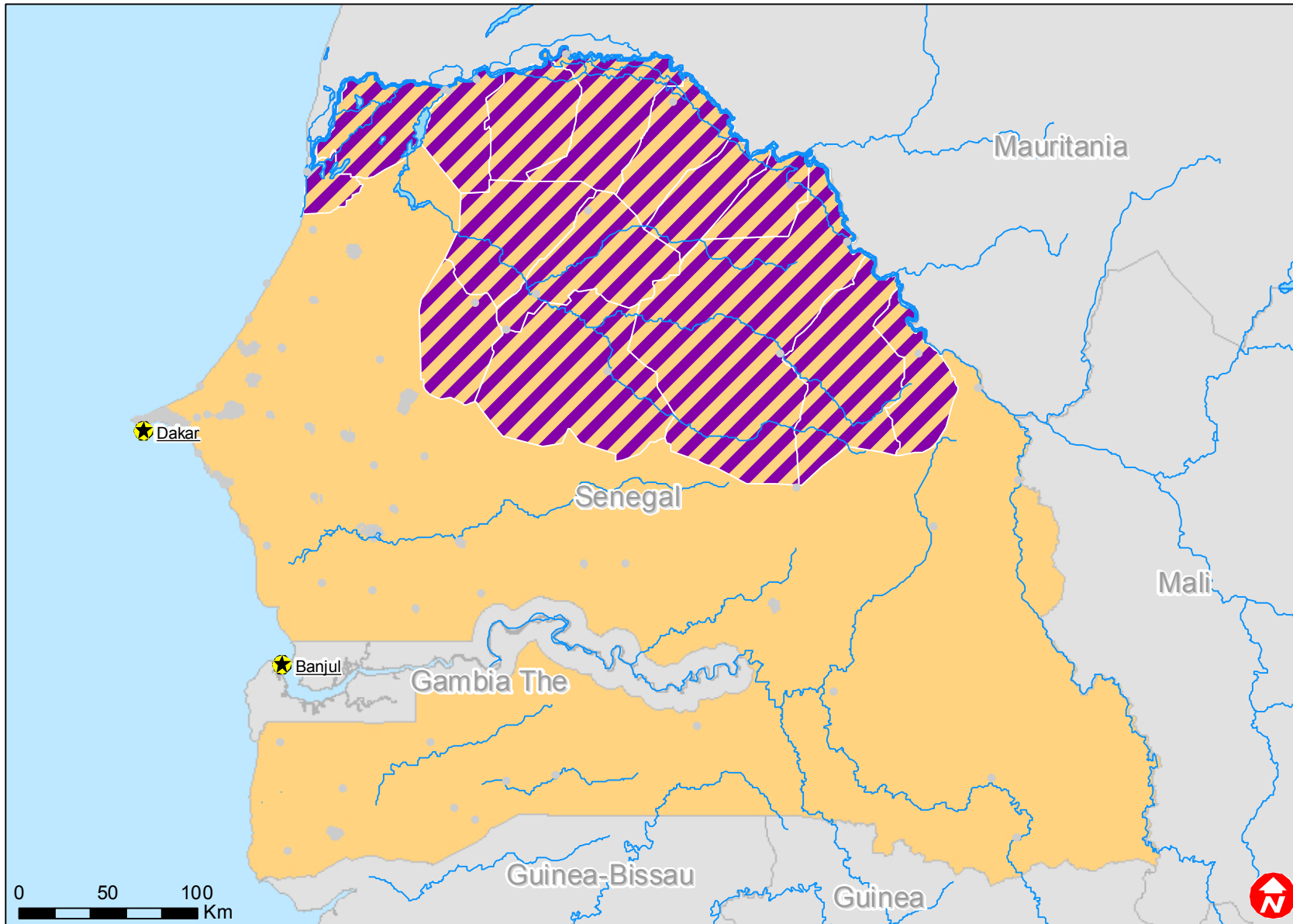
28-12-11


Senegal: Food Insecurity (MDRSN007)

| Budget Group | DREF Grant Budget CHF |
|--|------------------------------|
| Shelter - Relief | 0 |
| Shelter - Transitional | 0 |
| Construction - Housing | 0 |
| Construction - Facilities | 0 |
| Construction - Materials | 0 |
| Clothing & Textiles | 0 |
| Food | 26,400 |
| Seeds & Plants | 17,440 |
| Water, Sanitation & Hygiene | 0 |
| Medical & First Aid | 0 |
| Teaching Materials | 1,450 |
| Utensils & Tools | 13,735 |
| Other Supplies & Services | 0 |
| Emergency Response Units | 0 |
| Cash Disbursements | 40,000 |
| Total RELIEF ITEMS, CONSTRUCTION AND SUPPLIES | 99,025 |
| Land & Buildings | 0 |
| Vehicles Purchase | 0 |
| Computer & Telecom Equipment | 0 |
| Office/Household Furniture & Equipment | 0 |
| Medical Equipment | 0 |
| Other Machinery & Equipment | 0 |
| Total LAND, VEHICLES AND EQUIPMENT | 0 |
| Storage, Warehousing | 0 |
| Distribution & Monitoring | 7,000 |
| Transport & Vehicle Costs | 16,170 |
| Logistics Services | 0 |
| Total LOGISTICS, TRANSPORT AND STORAGE | 23,170 |
| International Staff | 0 |
| National Staff | 0 |
| National Society Staff | 0 |
| Volunteers | 21,825 |
| Total PERSONNEL | 21,825 |
| Consultants | 0 |
| Professional Fees | 0 |
| Total CONSULTANTS & PROFESSIONAL FEES | 0 |
| Workshops & Training | 7,500 |
| Total WORKSHOP & TRAINING | 7,500 |
| Travel | 0 |
| Information & Public Relations | 0 |
| Office Costs | 1,000 |
| Communications | 1,000 |
| Financial Charges | 1,750 |
| Other General Expenses | 1,000 |
| Shared Support Services | 0 |
| Total GENERAL EXPENDITURES | 4,750 |
| Programme and Supplementary Services Recovery | 10,158 |
| Total INDIRECT COSTS | 10,158 |
| TOTAL BUDGET | 166,428 |



Senegal: Food crisis



 Targetted area