

# INFORMATION BULLETIN



International Federation of Red Cross and Red Crescent Societies  
Fédération internationale des Sociétés de la Croix-Rouge et du Croissant-Rouge  
Federación Internacional de Sociedades de la Cruz Roja y de la Media Luna Roja  
الاتحاد الدولي لجمعيات الصليب الأحمر والهلال الأحمر

## INDONESIA: YOGYAKARTA EARTHQUAKE

28 May 2006

The Federation's mission is to improve the lives of vulnerable people by mobilizing the power of humanity. It is the world's largest humanitarian organization and its millions of volunteers are active in over 183 countries.

### In Brief

This Bulletin (no. 02/2006) is being issued to reflect the status of the situation and information available at this time. The Federation is seeking international support through an Emergency Appeal (launched on 27 May, 2006) which is available at [http://www.ifrc.org/cgi/pdf\\_appeals.pl?rpts06/IDeq28050602.pdf](http://www.ifrc.org/cgi/pdf_appeals.pl?rpts06/IDeq28050602.pdf)

Operations Updates reflecting more detailed information from assessment reports will be available shortly. [click here for a map of the affected area](#)

For further information specifically related to this operation please contact:

- In Indonesia: Indonesian Red Cross (PMI), Mr. Arifin M. Hadi (acting head of disaster management division); mobile: (+62 811) 943952; telephone: (+62 21) 799 2325 ext. 222; email: [arifinmhd@telkom.net](mailto:arifinmhd@telkom.net)
- In Indonesia: Federation delegation, Mr. Latifur Rahman (disaster management delegate); email: [latifur.rahman@ifrc.org](mailto:latifur.rahman@ifrc.org); mobile: +62 81 1826614; Mr Arnulv Torbjornsen (head of delegation); email: [arnulv.torbjornsen@ifrc.org](mailto:arnulv.torbjornsen@ifrc.org); phone: +62 21 79191841, fax: +62 21 79180905.
- In Geneva: Asia Pacific department, Mr Gert Venghaus; email: [gert.venghaus@ifrc.org](mailto:gert.venghaus@ifrc.org) phone: +44 22 7304258, fax: +41 22 7330395.

All International Federation assistance seeks to adhere to the [Code of Conduct for the International Red Cross and Red Crescent Movement and Non-Governmental Organizations \(NGO's\) in Disaster Relief](#) and is committed to the [Humanitarian Charter and Minimum Standards in Disaster Response \(Sphere\)](#) in delivering assistance to the most vulnerable.

For longer-term programmes in this or other countries or regions, please refer to the Federation's Annual Appeal. For support to or for further information concerning Federation programmes or operations in this or other countries, or for national society profiles, please also access the Federation's website at <http://www.ifrc.org>

### The Situation

The toll of people killed and injured in the earthquake that struck the Yogyakarta area of central Java on Saturday morning, 27 May 2006, continues to rise. Latest figures indicate loss of life at 3,065 people with a further 5,267 injured.

The quake, measuring 6.2<sup>1</sup> on the Richter Scale, struck Indonesia's most populated island yesterday morning at 05:54 local time (26 May 22:54 GMT). The epicentre was located in the Indian Ocean 37.2 km south of Yogyakarta, at 8.26°S, 110.31°E, at a depth of 33 km beneath the seabed. The tremor was felt most strongly in Klaten (30 km northeast of Yogyakarta) and Yogyakarta (440 km east of Jakarta). The tremor was also felt in Semarang and Surabaya. Although no tsunami was reported, many people living on the coast near the epicentre fled to high ground immediately after the quake was felt, with images of the Aceh tsunami cataclysm still fresh in the collective memory.

<sup>1</sup> United States Geological Survey

Early assessments are confirming extensive impact on buildings, with 70-90% of structures damaged or destroyed in some parts of the impact zone.

## Red Cross and Red Crescent action

Despite the fact that the local branch of the Indonesian Red Cross (Palang Merah Indonesia/PMI) in Yogyakarta was destroyed by the quake, volunteers from the city and surrounding Red Cross branches are continuing to provide humanitarian assistance in the impact area, with some volunteers delivering emergency first aid to survivors, and others distributing food, bottled water, tents, tarpaulins, and baby kits to the affected population. PMI ambulances are transporting mobile medical teams where roads are passable.

The five medical action teams deployed from PMI hospital in Bogor continue to work with personnel from the Singapore Red Cross, whose members had originally travelled to the area to assist PMI in preparations for a possible eruption of Mt. Merapi. An additional five teams from nearby PMI branches have arrived in the area and have joined the medical response effort. The PMI health post set up at the Bantul Branch continues tending to the injured being brought to that location.

PMI staff and volunteers have been participating in a rapid assessment today, in collaboration with technical experts from several Red Cross and Red Crescent national societies that have personnel in the country as part of the massive tsunami recovery operation in Aceh province and Nias Island. Results of that assessment will contribute to a more detailed Appeal to follow the Preliminary appeal that was published earlier today.

The Emergency Operations Centre at PMI national headquarters continues to maintain close contact with its chapters and branches to monitor the situation and to support needed action.

The Federation delegates deployed from the tsunami operation, including a relief delegate, two logistics delegates, an information delegates and a health delegate were aboard this morning's dedicated Red Cross Red Crescent flight to the nearby city of Solo. Also on board were the PMI chairman and the Federation head of delegation, who participated in the assessment activities. The group then drove the remaining distance to Yogyakarta (a one-hour drive) to support PMI's emergency response activities. Also on that plane, and also transported onwards to Yogyakarta, was 2.5 MT of relief and medical supplies.

Discussions amongst PMI and Federation leadership, in consultation with representatives of the national societies present in the country as partners in the tsunami recovery operation, have determined that no further internationally-provided supplies of goods-in-kind nor specialized technical human resources are required at this time. The combination of relief stocks on hand following the tsunami, of national society and Federation delegates available in-country for short-term deployment, and of relief goods available through local procurement, are sufficient to meet the immediate needs of the emergency phase.

### Emergency equipment inventory update

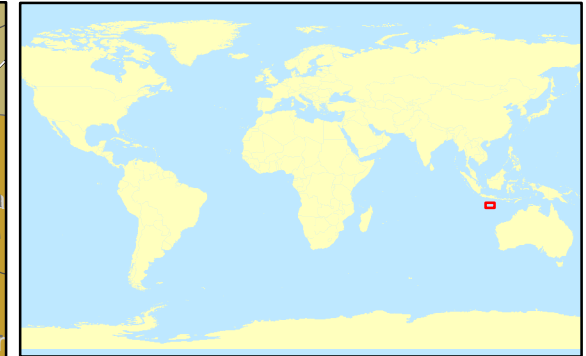
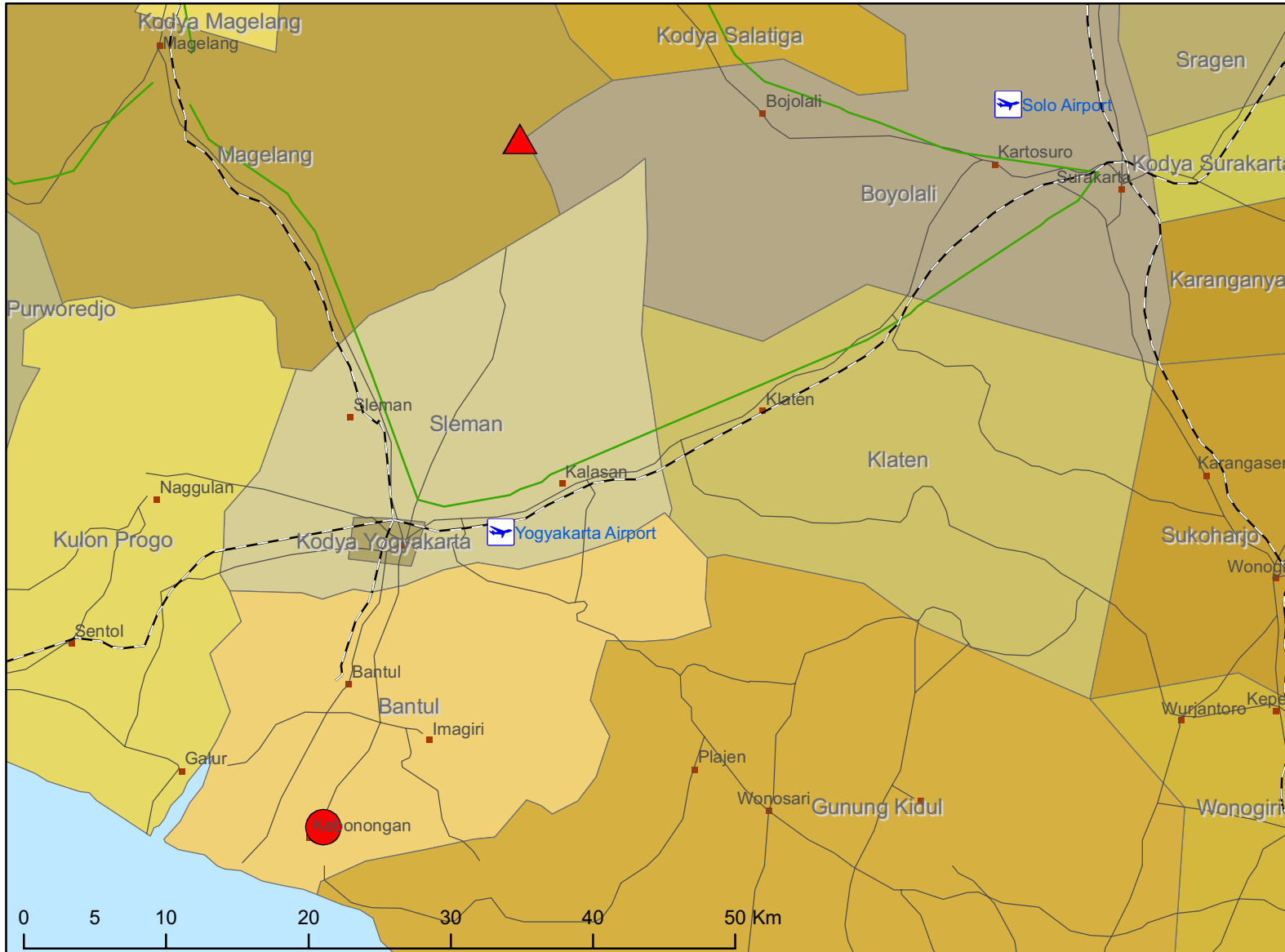
Item	Quantity	Comments/status
Family tents	12,000	2,000 on site plus 10,000 being mobilized from Medan
Tarpaulins	10,000	En route
Generator	15	en route
Body bags	3,000	1,000 in use, with additional 2,000 in transit
Water	20,000	In distribution
Food parcels	20,000	Distribution sufficient for 80,000 people (4 per parcel) starts Monday 29 May
Hygiene kits	5,000	In distribution
Family kits	4,000	In distribution
Field kitchen	10	Set up and in use
Field Hospital	2	1 large unit being set up, including surgical theatre; 1 smaller unit operational
Medicine		In distribution; inventory list to be received
Blankets	10,000	Initial quantity distributed; assessment ongoing re further needs
Shovels	75	re-deployed from Canadian Red Cross donated tsunami recovery stocks

Close coordination is maintained with UN agencies, AUSAID, USAID, and other donor embassies. Regular operation updates will be posted on the Federation website and the Disaster Management Information System (DMIS) as new information arrives.

*[Infographic map below, click here to return to the title page or contact information.](#)*



# Indonesia: Yogyakarta earthquake



- ▲ Mount Merapi
- Earthquake
- Main roads
- - - Railroads
- Power line
- ✈ Airports

The maps used do not imply the expression of any opinion on the part of the International Federation of Red Cross and Red Crescent Societies or National Societies concerning the legal status of a territory or of its authorities.

Map data sources: ESRI, UNOSAT, OCHA, IFRC