

INFORMATION BULLETIN



International Federation of Red Cross and Red Crescent Societies
Fédération internationale des Sociétés de la Croix-Rouge et du Croissant-Rouge
Federación Internacional de Sociedades de la Cruz Roja y de la Media Luna Roja
الاتحاد الدولي لجمعيات الصليب الأحمر والهلال الأحمر

INDONESIA: BENGKULU EARTHQUAKE

Information Bulletin no.
1/2007

13 September 2007

[Glide No: EQ-2007-000157-IDN](#)

The Federation's mission is to improve the lives of vulnerable people by mobilizing the power of humanity. It is the world's largest humanitarian organization and its millions of volunteers are active in 185 countries.

In Brief

This Bulletin is being issued for information only, and reflects the situation and the information available at this time. The Federation is not seeking funding or other assistance from donors for this operation at this time.

The Situation

Several earthquakes have struck Indonesia's Sumatera Island since Wednesday, 12 September 2007. The first occurred at 18:10 local time, measuring 8.4 on the Richter scale. Its epicentre was located at 4.517° south and 101.382° east, 130 kilometres southwest of the province's capital Bengkulu¹. A potential tsunami alert message was issued by BMG (Meteorology and Geophysics Agency), but was withdrawn within two hours after the first quake. ([click here for a map of the area](#))

Several aftershocks were reported with magnitudes varying between 5.2 – 5.7 on the Richter Scale along the west coast of Bengkulu, with the exception of one measuring 7.8 which occurred on Thursday, 13 September at 06:49 local time. The epicentre is located at 2.526° south and 100.964° east, 185 kilometres southeast of Padang, West Sumatera². The BMG office also issued a tsunami watch but again lifted it within the next few hours.

The tremor of the earthquakes was felt on the western coast of Sumatera island (North Sumatera, West Sumatera, Bengkulu, Lampung, and Riau) and even as far as the country's capital city Jakarta. Neighbouring countries Malaysia and Singapore also experienced the tremor. People in Bengkulu and Padang in West Sumatera were reported to have evacuated buildings and houses in panic, seeking shelter on higher ground. Some evacuees in Bengkulu have sought refuge in the grounds of the damaged governor's office, which is situated on high ground.

As of 13 September, the ministry of health have stated two deaths registered in Bengkulu as a result of the quake. Eleven people have been injured: two in Padang, five in North Bengkulu and four in Bengkulu city. The total population of Bengkulu province alone is approximately 1.2 million people.

In Bengkulu, electricity and communication lines were cut off for a few hours but have since been restored. The local state hospital, RS M. Yunus, suffered damage but is still able to provide services. The director general of transportation has reported minor damages to the airport in Bengkulu, but without major consequences. The airport itself is still fully operational.

¹ Source: USGS

² Source: USGS

Patients of the Ibnu Sina hospital in Padang, West Sumatera were also evacuated from the hospital building. A number of fire outbreaks were also reported at a mall and several homes. Electricity was cut off for a brief period of time, and damages to a factory as well as a car showroom were also reported.

In response to the disaster, the United Nations (UN) has sent a nine-person team on a flight from Banda Aceh to Bengkulu for assessment. The Federation is currently in close contact with the UN as well as ECHO and USAID for information sharing and possible further assistance.

Red Cross and Red Crescent action

The Indonesian Red Cross (Palang Merah Indonesia/PMI) staff and volunteers based in the field have already started a preliminary assessment. Additionally, the PMI Headquarters and the Federation are sending a two-person team to carry out a more thorough assessment. Initial findings indicate that North Bengkulu is the most damaged area.

Local immediate response was taken by PMI volunteers dispatched to assist with the evacuation process. In Padang, PMI have established an emergency health post in cooperation with ORARI (Indonesian Amateur Radio Organisation). They have also erected four emergency health posts near the M. Yunus hospital in Bengkulu to assist with the handling of patients, and have mobilized three ambulances to assist with evacuation in the field.

Based on initial information on needs in the field, the PMI Headquarters will send resources from Jakarta to the PMI Chapter in Bengkulu, including 1,000 standard earthquake medical packages (comprising antiseptic solution, bandages/tourniquets, etc.) and 2,000 tarpaulins. Additionally, 1,500 hygiene kits and 150 family kits will be disbursed from the PMI's warehouse in Padang, West Sumatera.

The partner national societies (PNS) present in Indonesia in response to the December 2004 earthquake and tsunami, have already expressed offers of assistance. The American, Canadian, Danish, German, Hong Kong, Japanese, Netherlands and Norwegian Red Cross societies have indicated that they are ready to assist with in-cash donations, as well as services to help facilitate any assessment and response operations. In order to avoid any duplication and overlapping of response and to ensure proper coordination from the start of the operation, the PMI and the Federation have requested the PNS to standby until further information has been gathered from the field assessment.

Additionally, the Federation has received approval to use AUD 50,000 (CHF 49,625) emergency funds from the Australian Aid Agency (AusAID). The Federation delegation in Jakarta is working in close coordination with the disaster management unit and regional logistics unit in Kuala Lumpur as well as the disaster management unit of the regional representation in Bangkok.

Both PMI and the Federation will continue to monitor the situation. Further updates of the situation will be made available in the next information bulletin.

[A map is attached below. Click here to return to the main page.](#)

How we work

All International Federation assistance seeks to adhere to the [Code of Conduct for the International Red Cross and Red Crescent Movement and Non-Governmental Organizations \(NGOs\) in Disaster Relief](#) and is committed to the [Humanitarian Charter and Minimum Standards in Disaster Response \(Sphere\)](#) in delivering assistance to the most vulnerable.

The Federation's Global Agenda

The International Federation's activities are aligned with under a Global Agenda, which sets out **four broad goals** to meet the Federation's mission to "improve the lives of vulnerable people by mobilizing the power of humanity".

Global Agenda Goals:

- Reduce the numbers of deaths, injuries and impact from disasters.
- Reduce the number of deaths, illnesses and impact from diseases and public health emergencies.
- Increase local community, civil society and Red Cross Red Crescent capacity to address the most urgent situations of vulnerability.
- Reduce intolerance, discrimination and social exclusion and promote respect for diversity and human dignity.

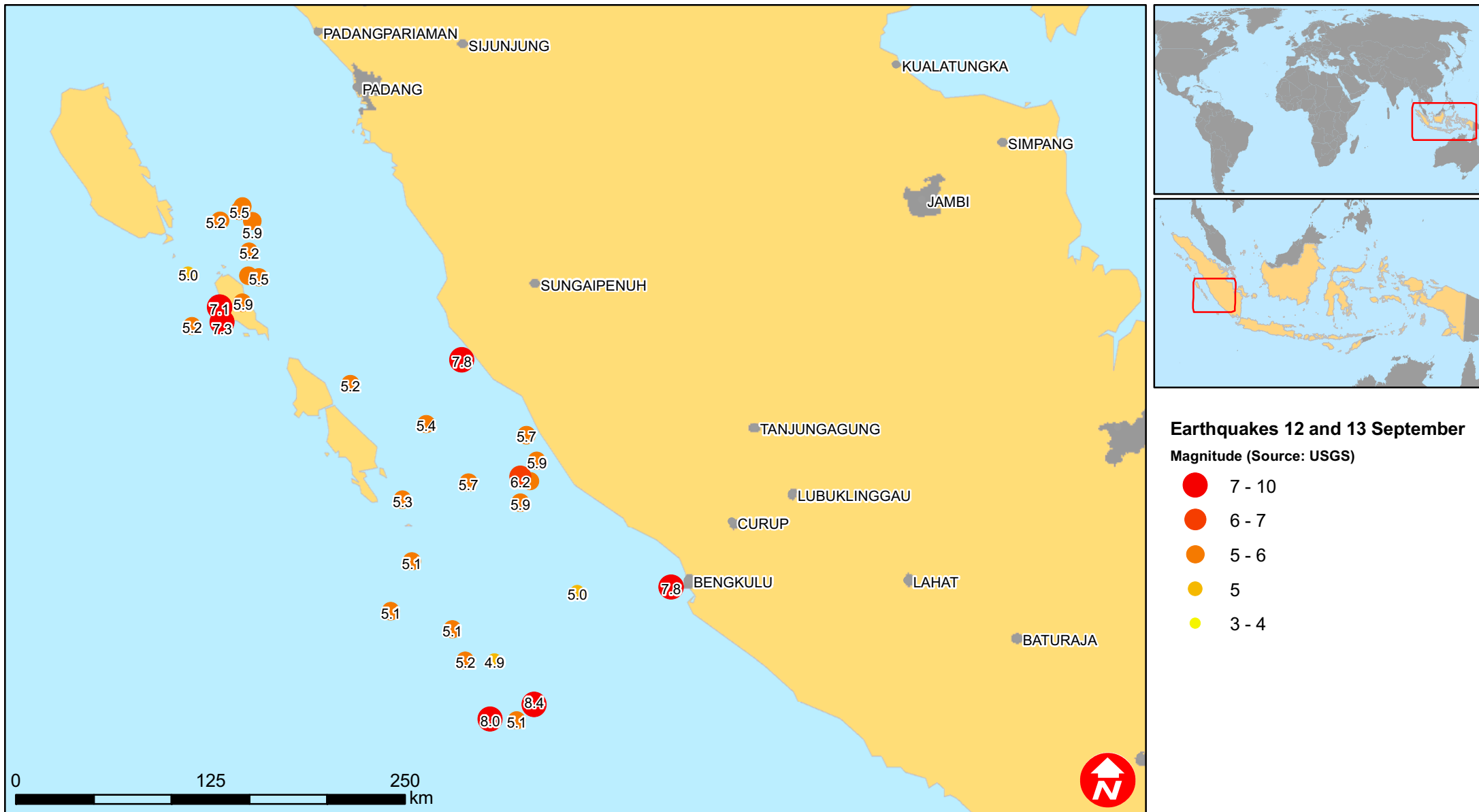
Contact information

For further information specifically related to this operation please contact:

- Indonesian Red Cross (PMI): Arifin M. Hadi (Acting Head of Disaster Management Division); arifinmhd@telkom.net; mobile: +62.811.943.952; phone: +62.21.7992325 ext. 222.; fax: +62.21.7995188
- Federation Delegation in Indonesia: Bob McKerrow (Head of Delegation); email: bob.mckerrow@ifrc.org; phone: +62.21.7919.1841 (ext. 104); fax: +62.21.7918.0905;
- Federation Southeast Asia regional delegation in Thailand: Alan Bradbury (acting regional representative); email: alan.bradbury@ifrc.org; phone: +66.2.661.8201 ext 100.
- Federation Secretariat in Geneva (Asia Pacific Department): Josse Gillijns (regional officer); email: josse.gillijns@ifrc.org; phone: +41.22.730.4224; fax: +41.22.7330395 or Priya Nair; email: priya.nair@ifrc.org; phone: +41.22.730.4296
- Asia Pacific Zone in Kuala Lumpur: Ms Amy Gaver, phone: + 60 3 2161 0892, fax: +60 3 2161 1210, mobile +60 12 220 1174, email: amy.gaver@ifrc.org



Indonesia: Earthquakes



The maps used do not imply the expression of any opinion on the part of the International Federation of the Red Cross and Red Crescent Societies or National Societies concerning the legal status of a territory or of its authorities.

Map data sources: ESRI, DEVINFO, USGS, Federation