

Information bulletin



International Federation
of Red Cross and Red Crescent Societies

SENEGAL: Floods

Information bulletin n° 01
16 September, 2008

Following pouring rain which has lasted almost a week, the Senegalese Red Cross supported by the IFRC carried out an evaluation in the most affected zones of Dakar (Diamaguène, Pikine, Guédiawaye, Dalifort, Sam-Sam and Diacksao).

In accordance with its mandate to reduce human suffering, the Senegalese Red Cross with the support of the IFRC distributed sets of two treated mosquito nets and two sleeping mats to 20 displaced families.

The national society is conducting assessment to develop a plan of action. This bulletin is issued for information only. No external funding is required for the time being.

[<click here to view the map of the affected area, or here for detailed contact information>](#)



Children on a flooded street in Dakar, Senegal

The Situation

From 1 to 4 September, 2008 Dakar received 133 mm of rain, twice as much rain as would normally be expected. Several neighborhoods in Dakar and its suburbs are flooded, and neighborhoods in the cities of Thiès, Diourbel, Saint-Louis and Kaolack. More than 70 families in these various cities are currently displaced; some are relocated in schools or are staying with neighbors or relatives.

According to the assessment conducted by Senegalese Red Cross volunteers, to date a growing number of more than 3,400 persons are currently affected by the floods. Displaced families living in urban areas sometimes have difficulties to find shelters. Most affected families remain in their homes despite the rising waters, with the risks of outbreaks of water-borne diseases.

Red Cross and Red Crescent action

On August 1, the West and Central Africa Zone IFRC received warning from the African Centre of Meteorological Application for Development (ACMAD) of heavy approaching rains. On August 2, the Senegalese Red Cross supported by the IFRC carried out a rapid assessment mission in the most affected zones of Dakar (Diamaguène, Pikine, Guédiawaye, Dalifort, Sam-Sam and Diacksao).

The Senegalese Red Cross registered the displaced and affected families and began a sensitization campaign on water and sanitation, prevention of malaria and water-borne diseases, and promotion of basic health rules.

Numerous communities are affected by the heavy rainfall, but have been prepared to receive large quantities of rain. Many are well prepared with sandbags and water drainage systems.

In Pikine, 20 families have been displaced by floods and have been relocated in schools (five families in Diamaguène and 15 in Dalifort). In accordance with its mandate to reduce human suffering and assist the most vulnerable, the Federation supported Senegalese Red Cross on August 3 to carry out distribution of non-food items, which included a set of two treated mosquito nets and two sleeping mats to each displaced family. Items selected for distribution were based on the real needs of the 20 displaced families.

Senegalese Red Cross volunteers are still working in the field to conduct a second assessment and register affected and displaced people. More than 3,400 affected persons have already been registered. When the second assessment is complete, there will be a needs' assessment and the list of affected families will be scanned for the most vulnerable. A plan of action will be developed to respond. Sensitization for health, water and sanitation, and the prevention of malaria and diseases water related diseases is ongoing.

When the school year resumes, displaced families will need to be relocated again. The Federation and the Senegalese Red Cross will follow up with the displaced families' cases to provide continued support according to their identified needs. The Senegalese Red Cross will continue to monitor the situation with the support of the Federation through climate forecasts (ACMAD and the Columbia University International Research Institute for Climate and Society [IRI]).

An early warning system developed by the Federation in cooperation with ACMAD and IRI has been used. Early warnings of approaching severe weather can instigate prompt humanitarian action. This early warning system is being practiced and strengthened. The desired timetable of the system is: day 1: information is received and disseminated to partners; day 2: assessment is carried out; day 3: identified needs are addressed.

How we work

All International Federation assistance seeks to adhere to the [Code of Conduct for the International Red Cross and Red Crescent Movement and Non-Governmental Organizations \(NGO's\) in Disaster Relief](#) and is committed to the [Humanitarian Charter and Minimum Standards in Disaster Response \(Sphere\)](#) in delivering assistance to the most vulnerable.

The International Federation's activities are aligned with its Global Agenda, which sets out four broad goals to meet the Federation's mission to "improve the lives of vulnerable people by mobilizing the power of humanity".

Global Agenda Goals:

- Reduce the numbers of deaths, injuries and impact from disasters.
- Reduce the number of deaths, illnesses and impact from diseases and public health emergencies.
- Increase local community, civil society and Red Cross Red Crescent capacity to address the most urgent situations of vulnerability.
- Reduce intolerance, discrimination and social exclusion and promote respect for diversity and human dignity.

Contact information

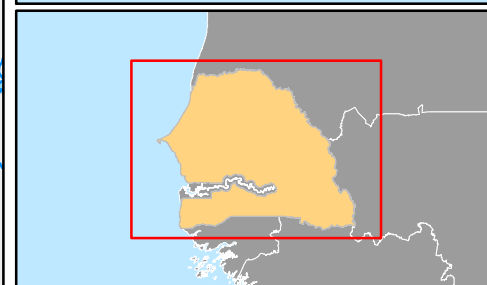
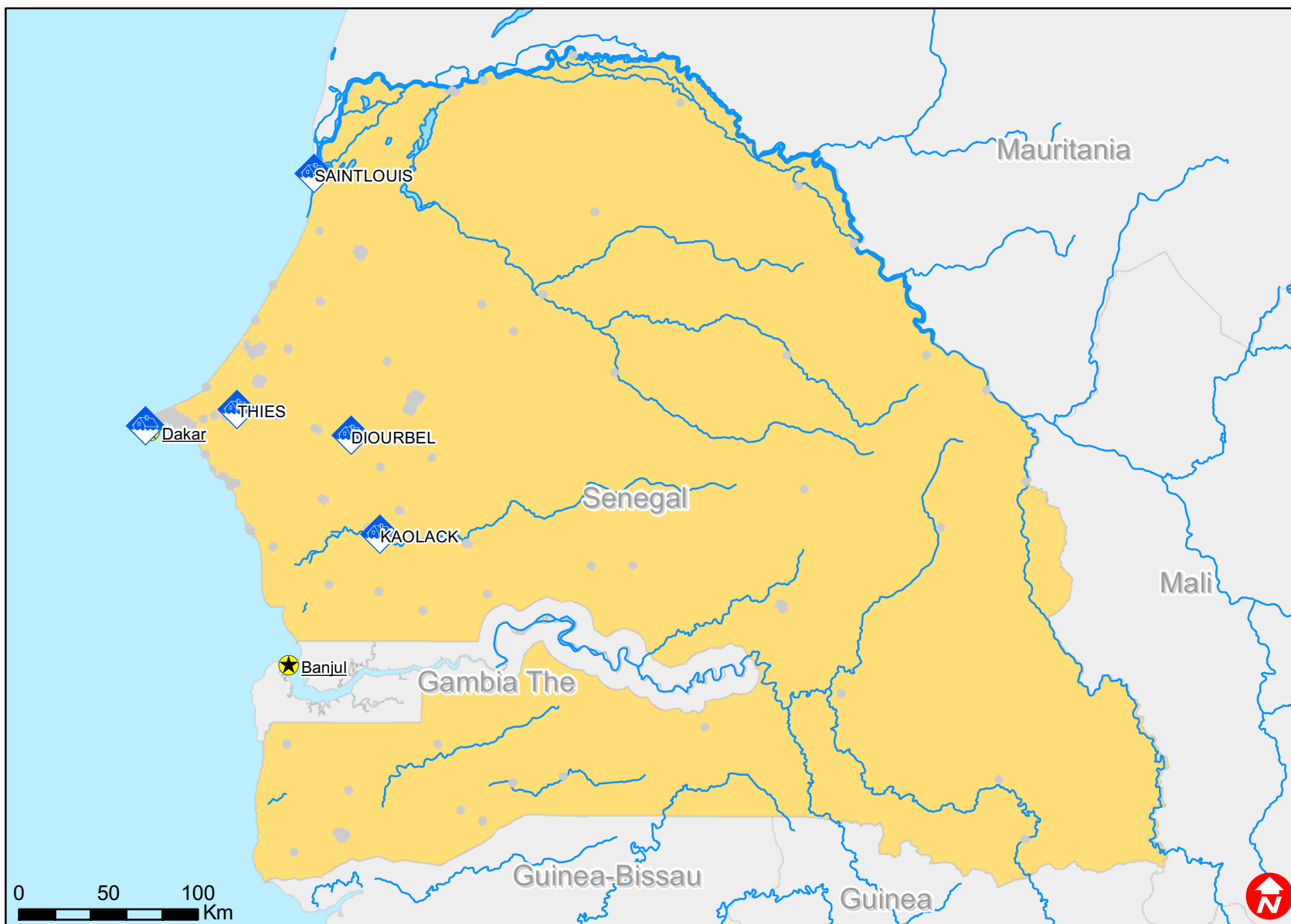
For further information specifically related to this operation please contact:





- In **Senegal**, Senegalese Red Cross: Sonko Maladou, Head of Operations, phone: +221.77.579.0056; email: sonkomala@yahoo.fr
- In **Senegal**, IFRC West and Central Africa Zone Office: Youcef Ait-Chellouche, Disaster Management Coordinator, phone: Tel:+221.33.869.3640, Fax:+221.33.860.2002; email: youcef.aitchellouche@ifrc.org

[<map below; click here to return to the title page or contact information](#)



Senegal: Floods



-  Affected cities
-  Capitals
-  Cities
-  Urban area