

Information bulletin



International Federation
of Red Cross and Red Crescent Societies

China: Earthquake

Information bulletin n° 1
GLIDE n° [EQ-2009-000130-CHN](#)
10 July 2009

This bulletin is being issued for information only.

At 7.19 pm local time (11.19 am GMT) on 9 July, an earthquake which measured between 5.7 and 6.0 on the Richter scale, hit Yao'an county, Chuxiong Yi Autonomous Prefecture, a mountainous region of south-western China's Yunnan province. The earthquake killed at least one person, injured more than 300 and destroyed more than 18,000 houses. Some 1.26 million people are estimated to be affected by this quake.

[<click here to view the map of the affected areas, or here for detailed contact information>](#)

The Situation

The majority of houses in the quake area, Yao'an county, which is a relatively poor agricultural maize- and rice-growing region, are built out of adobe, with limited earthquake-resistance.

The official Xinhua news agency indicate that the quake struck on Thursday evening local time in Guantun township in Yao'an county, about 200 kilometers from the provincial capital Kunming. More than 300 aftershocks are reported to have occurred thus far, causing further fear and anxiety among the survivors of the initial quake.

Some 30 people of the overall injured were reported to be in serious condition and are being treated in a local hospital. More than 75,000 buildings were damaged by the earthquake. The earthquake measured between 5.7 and 6.0 on the Richter scale, and the U.S. Geological Survey said the quake occurred 10 kilometers below ground.

Yunnan province, which borders Sichuan, where last year's 8.0 magnitude quake left more than 80,000 dead, is itself a highly earthquake-prone region, with a quake in 1988 which left hundreds of people dead and an even bigger one in 1970, reported to have killed thousands of people.

Red Cross and Red Crescent action

A team from the Yunnan provincial branch of the Red Cross Society of China (RCSC) has travelled to the earthquake zone and is currently assessing the needs there.

At time of reporting, the Yunnan branch of the RCSC has already transported 300 tents and 1,000 quilts from the provincial disaster preparedness warehouse to the scene. A further 2,000 quilts, 100 tents and 250 packs of disinfectant worth approximately CHF 45,200 (CNY 285,000) as well as approximately CHF 7,900 (CNY 50,000) from the emergency fund for food purchases is expected to be released from RCSC's national headquarters.

Red Cross officials in Yunnan say that psychosocial teams may be deployed to the disaster area at a later stage, according to the needs.

The Red Cross deployments of relief goods come in addition to plans by the government to send 4,500 tents and 3,000 quilts to the quake-affected area.

How we work

All International Federation assistance seeks to adhere to the [Code of Conduct for the International Red Cross and Red Crescent Movement and Non-Governmental Organizations \(NGO's\) in Disaster Relief](#) and is committed to the [Humanitarian Charter and Minimum Standards in Disaster Response \(Sphere\)](#) in delivering assistance to the most vulnerable.

The International Federation's activities are aligned with its Global Agenda, which sets out four broad goals to meet the Federation's mission to "improve the lives of vulnerable people by mobilizing the power of humanity".

Global Agenda Goals:

- Reduce the numbers of deaths, injuries and impact from disasters.
- Reduce the number of deaths, illnesses and impact from diseases and public health emergencies.
- Increase local community, civil society and Red Cross Red Crescent capacity to address the most urgent situations of vulnerability.
- Reduce intolerance, discrimination and social exclusion and promote respect for diversity and human dignity.

Contact information

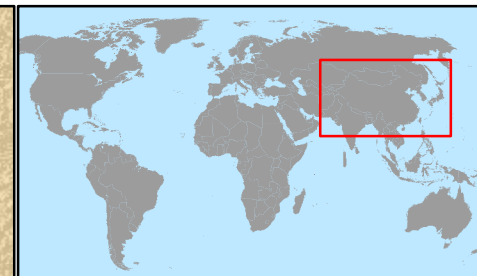
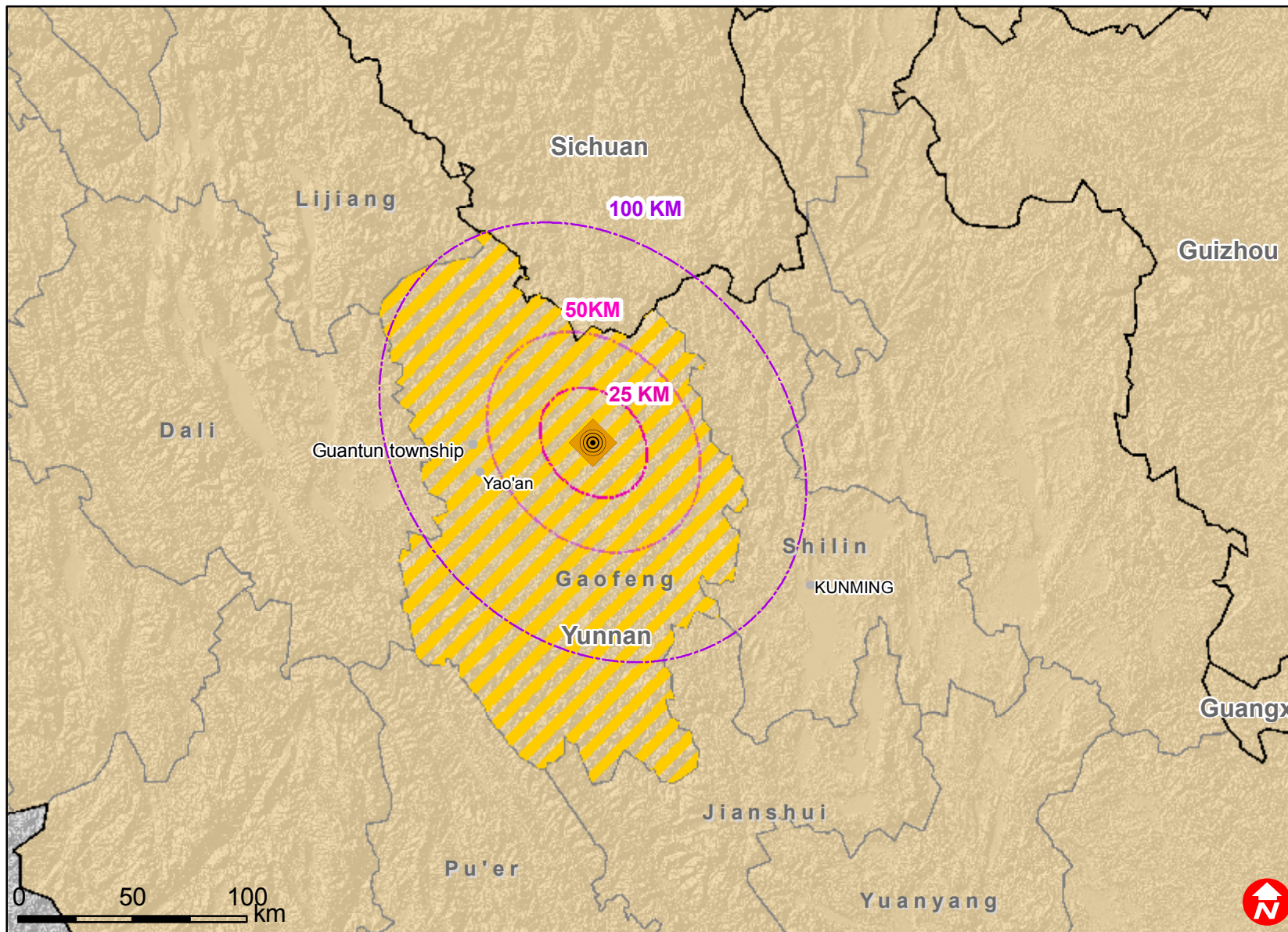
For further information specifically related to this operation please contact:




- Red Cross Society of China: Mr. Wang Xiaohua, director of external relations department; email: rcsc@chineseredcross.org.cn; phone: +86.10.6404.8366, fax +86.10.6402.9928.
- East Asia regional office in China: Mr. Carl Naucler, (head of regional office), email; carl.naucler@ifrc.org; phone: +86 10 6532 7162; Mr. Qinghui Gu (regional disaster management coordinator), email; qinghui.gu@ifrc.org; phone: +86 1391 0959 834, fax: +86 10 6532 7166
- Asia Pacific Zone office in Kuala Lumpur: Mr Heikki Väätämäinen (disaster response delegate), email: heikki.vaatamainen@ifrc.org, phone: + 60 3 9207 5729, mobile: +60 12 230 7895, fax: +60 3 2161 1210

[<map below; click here to return to the title page>](#)



China Earthquake



-  Main earthquake
-  Capitals
-  Cities