

DREF operation



International Federation
of Red Cross and Red Crescent Societies

Paraguay: Floods

DREF operation n° MDRPY008
Glide No. [FL-2009-000226-PRY](#)
6 November 2009

The International Federation's Disaster Relief Emergency Fund (DREF) is a source of un-earmarked money created by the Federation in 1985 to ensure that immediate financial support is available for Red Cross and Red Crescent response to emergencies. The DREF is a vital part of the International Federation's disaster response system and increases the ability of national societies to respond to disasters.

CHF 256,996 (USD 250,515 or EUR 170,100) has been allocated from the Federation's Disaster Relief Emergency Fund (DREF) to support the Paraguayan Red Cross (PRC) in delivering immediate assistance to some 10,680 beneficiaries. Unearmarked funds to repay DREF are encouraged.

Summary: As of 22 September, continuous rainfall has caused flooding of the Paraná River affecting communities in the central region, particularly communities in the departments of Misiones - Ayolas and Itapúa - Encarnación, Ñeembucú and Alto Paraná. On 23 of October, continuous rain caused the water level to rise well above the height of the river banks. Besides heavy rain falls the over flow of Yacyreta and Itaipú dam had a major effect to the floods. Another cause of the flooding is the retention of water in the floodplains which has also contributed to make the situation even worse.



A flooded community in the department of Alto Paraná. Source: Paraguayan Red Cross/ J. Lopez.

The emergency is due to the floods affecting the departments of Misiones, Ñeembucú, and Alto Parana. As of today in these three departments

approximately 2,136 families are affected by lack of basic resources. This DREF operation will provide 2,136 families in the areas of Misiones, Alto Paraná and Ñeembucú with mosquito nets, hygiene kits, shelter kits and seeds for rehabilitation of crops.

This operation is expected to be implemented over three months, and will therefore be completed by 3 February 2010; a Final Report will be made available three months after the end of the operation (by 3 May 2010).

[<Click here for the DREF budget,](#)
[here for contact details, or here to view the map of the affected area>](#)

The situation

Since September 22, continuous rainfall and overflow of dams have caused flooding of the Paraná River affecting communities in departments of Misiones (Ayolas and Itaipúa), Encarnación, Ñeembucú and Alto Paraná.

On Friday 23 October the water level reached to 80.12 metres above sea level in the Posadas-Encarnación — the Posadas dam is located in the Paraguayan side and Encarnación is the Argentinean side of the dam. Considering that 85 per cent of Paraguayan territory is floodplain which easily can cause flooding by the continuous rain, and over flow the Yacyreta and Itaipú dam — The Yacyreta dam is part of the hydroelectric power station Jasyretâ-Apipé located nearby the city of Ayolas (Misiones department), and the Itaipú hydroelectric dam is located in the Paraná River in the Paraguayan and Brazilian border. Given the geographic location, there is little possibility of water retention in the floodplains which has also contributed to aggravate the situation.

According to several different forecasts—from domestic, international and governmental organizations—more rainfall is expected in the next few days in the high basins of the Paraná and Iguazú rivers, which could increase the existing hydrometric records. The population continues to be on alert and the families have been evacuated to the highlands.

As a result, the Paraguayan Red Cross has prioritized coastal towns in the departments presenting flash floods, as follows:

Department of Alto Paraná (Ciudad del Este):

On 18 October 2009, an excessive increase in water flow from the Paraná River, as a result of the constant rainfall from the past two months, caused the overflow of the river bed and flash floods. This so far has affected 837 families (4,035 persons) of 18 communities belonging to the municipality of Ciudad del Este, which is the capital city of the department of Alto Paraná. Additionally, on 21 October 2009, there was a strong wind and hail affecting some areas of the municipality of Ciudad del Este. Consequently, on 19 October the Alto Paraná department was declared an emergency zone under Resolution No. 4848/IM.

Department of Misiones (Ayolas)

In the city of Ayolas, on October 18 the departmental government of Misiones also issued a warning to the coastal population of this city as a result of accumulated rainfall in the area of Salto del Guaira, Matto Grosso and the flooding caused by the overflow of the Paraná River. This has given rise to floods in ten communities with a total of 700 families (2,280 people), which has resulted not only in the loss of their homes but also crops, impacting their livelihoods and income. The projection is that more rain in the upper level of Brazil (Iguazú) will occur and contribute to further flooding.

Department of Ñeembucú:

The floods have caused serious problems in the communities of Paso de Patria, General Diaz Mayor Martinez, Villalbin and Cerrito, resulting in many families leaving their homes and cutting off access to these places. As a result of the report of the municipalities and a sustained rise in the Paraná River in recent days in the interior of Ñeembucú, the Government has requested the support of the Centre for Civil Protection Operations - Branch COPCI Ñeembucú and the Paraguayan Red Cross to accompany an assessment of the communities affected by the flood. The result of the assessment shows that there are currently 748 families (3,740 people) affected and approximately 705 hectares of subsistence crops have been damaged, leaving an atmosphere of widespread frustration among producers.



**A family affected by the floods in the department of Ñeembucú.
Source: Civil Protection Operations Centre (COPCI – Ñeembucú).**

Coordination and partnerships

Since the onset of the crisis, the Paraguayan Red Cross has been coordinating relief actions with the National Emergency Secretariat (Secretaría de Emergencia Nacional - SEN), the Emergency Department Committees of the affected departments as well as the affected municipalities. The local PRC branches in each municipality will assist and coordinate with all actors involved.



The National A flooded house in the department of Itapúa.
Source: Paraguayan Red Cross/ E. Nuñez.

The municipality of Ciudad del Este has been responding to the immediate needs to the affected people with the distribution of items such as tents, blankets and food items including cookies and milk. The government also provided two ambulances with doctors, mobile health care, mineral water and 30 staff to help people to move to a safer location. The Municipality of Encarnación activated the Emergency Operations Centre, coordinating the work between public and private sectors: such as the national police, volunteers, the fire department, municipality, the Entidad Binacional Yacyreta — the administration of the hydroelectric power station for Paraguay-Argentina, which is the third largest in the world— and has also coordinated with the Red Cross branches in Itapúa. The National Traffic Police is responsible for ensuring the safety of traffic, because most of the streets

in low-lying areas were flooded. The vast majority of those affected do not want to leave their homes and/or belongings for fear of losing them. The Entidad Binacional Yacyreta is helping to relocate the families who decide to leave their homes. The Ayolas Municipality is providing vehicles for evacuation, and ensuring communications and coordination among the different organizations in the field.

The International Federation, through its Pan American Disaster Response Unit (PADRU) and the Regional Representation for the Southern Cone and Brazil, is communicating with and providing support to the National Society. Technical support is provided by a disaster management delegate from PADRU and if needed, a disaster management Regional Intervention Team (RIT) member may be deployed from PADRU to Paraguay to provide support to the PRC in carrying out the plan of action.

Since 1999, the PRC has been working on development projects in the most vulnerable communities in the country, supported by the Federation and also by bilateral agreements with the Spanish Red Cross, with a focus on health and disaster preparedness. Following the drought which affected the Chaco region in 2002, the Federation launched an appeal to assist the department of Boquerón. As a result of this appeal, more sustainable and long-term projects in the communities were developed. Nevertheless, every year the droughts have been affecting more people and further short term and long-term projects are needed to assist the most vulnerable.

The Paraguayan Red Cross is working in close cooperation with the Finnish Red Cross in drawing up the Plan of Action for the operation since the Finnish Red Cross is in dialogue with ECHO for possible funding for food and shelter items; and coordination is being ensured so that the plans are complementary.

Red Cross and Red Crescent action

Since the emergency started, the PRC has activated its response team and has been providing humanitarian assistance as well as defining the lines of action in order to fulfil the basic needs to minimize risk in the affected areas. In severity of this emergency and the need for quick coordination and action PRC is working aggressively with the lines of action established by the SEN and local authorities. The PRC drew up a plan of action for this DREF operation, which forms part of a general plan to provide response to the needs of three departments.

The PRC is part of the Emergency Operations Centre which is coordinated by the Ministry of National Emergency.

The PRC has deployed a team of three National Intervention Teams (NIT) members to the field to support the evaluation and surveying data and mobilizing volunteers. The National Society has also been monitoring the situation and producing daily situation reports.

The needs

The Paraguayan Red Cross has identified the most immediate needs for the most vulnerable families. The basic needs identified are: food, shelter, kitchen kits, mattresses, hygiene kits, seeds for agriculture, portable bathrooms, blankets, psychosocial support, water and health and fuel.

The proposed operation

The PRC drew up a plan of action to assist 2,136 families in the departments of Ñeembucú, Misiones and Alto Parana. With rehabilitation of livelihoods in the agricultural sector including distribution of seeds, fertilizer, insecticides and non-food items such as shelter kits, mosquito nets, and hygiene kits. The beneficiary criteria established in this DREF operation are:

- Families located in areas affected by the flood in the departments of Ñeembucú Misiones and Alto Paraná.
- Small farmer families that have lost their crops due to floods

The operation seeks to achieve the following:

- Assist in the provision of mosquito nets to 2,136 families affected by floods in the department of Misiones.
- Provide hygiene kits to 2.136 families from the areas of Misiones, and Alto Parana.
- Provide seed and technical assistance for 3 months to communities whose crops have been affected by floods in the Department of Misiones and Ñeembucú.
- Provision of Shelter kits to 320 families in the Ñeembucú department.
- Training on "Managing Temporary Collective Centres" to volunteers from the three branches involved (Alto Paraná, Ñeembucú and Misiones).
- The procurement of the non-food relief items will be carried out by the Regional Logistics Unit (RLU) in Panama.

Relief distributions (basic non-food items)

Objective: To assist 2,136 families of the most vulnerable families in the departments of Misiones, Ñeembucú and Alto Paraná with humanitarian aid non food items such as hygiene kits and mosquito nets.

Activities planned:

- Conduct further needs and capacity assessments.
- Coordinate with SEN, the municipalities involved and the leaders of each community to explain the methodology of the intervention (administrative procedures).
- Develop beneficiary targeting strategy and registration system to deliver intended assistance.
- Distribute relief supplies and control supply movements from point of dispatch to end user.
- Monitor and evaluate the relief activities and provide reporting on relief distributions.

Rehabilitation of livelihoods

Objective: 1,099 of the most affected small farmer families in the departments of Misiones and Ñeembucú will receive seeds to sow new crops.

Activities planned:

- Develop a strategy of intervention and agricultural improvement in flood affected Land.
- Develop terms of reference of the agricultural engineer for the operation.
- Hire the engineer
- Once agricultural engineers perform damage and need assessments in the communities affected by the flood., a diagnosis of beneficiary communities will be drawn up in the area of crops with respect to types of crops, losses of crop, potential crops that will flourish in the flood zone and development of the strategy of intervention in the sector and the schedule will be developed.
- Prepare a work schedule in terms of assistance, training and supply of seed.

- Selection and census of beneficiaries.
- Selection of suppliers.
- Distribution of seeds to affected families.
- Agricultural engineer will provide technical assistance.
- Monitoring and evaluation.

Shelter

Objective (immediate needs): Provision of 320 Shelter Kits to 320 households with severely damaged houses in the community of Ñeembucú

- Coordinate with SEN, the municipalities involved and the leaders of each community to explain the methodology of the intervention (training and working groups)
- Develop a plan of distribution and training in communities where shelter kits will be distributed.
- Develop forms for recipient database.
- Train volunteers on the use of shelter kits.
- Prepare material on use of shelter kits for dissemination
- Train final users on the use of the shelter Kits and delivery of the kits.
- Supervise and monitor the use of the Shelter kits
- Conducted workshops on "Managing Temporary Collective Centres" '
- Organize of work teams by sector

Two Regional Intervention Team members from the PRC trained in shelter by the Federation will provide training in the use of the shelter kit to the volunteers involved in the activity and to the final users.

No additional material is needed as the households will be repaired with wooden material recovered locally and former structures. Monitoring will be done by the trained volunteers from several PRC branches.

Moreover, three workshops in 'Managing Temporary Collective Centres' will be carried out, one in each PRC branch of the affected areas.

Each shelter kit contains the following items:

Specifications	Quantity per kit	Units
Tarpaulins	2	Pc
Rope	30	mts
Hand saw	1	Pc
Roofing nails	0.5	Kg
Shovel	1	Pc
Hoe	1	Pc
Machete	1	Pc
Tin Snips	1	Pc
Nails	0.5	Kg
Tie wire	5	m
Claw hammer	1	Pc
Woven sack	1	Pc

How we work

All International Federation assistance seeks to adhere to the [Code of Conduct for the International Red Cross and Red Crescent Movement and Non-Governmental Organizations \(NGO's\) in Disaster Relief](#) and is committed to the [Humanitarian Charter and Minimum Standards in Disaster Response \(Sphere\)](#) in delivering assistance to the most vulnerable.

The International Federation's activities are aligned with its Global Agenda, which sets out four broad goals to meet the Federation's mission to "improve the lives of vulnerable people by mobilizing the power of humanity".

Global Agenda Goals:

- Reduce the numbers of deaths, injuries and impact from disasters.
- Reduce the number of deaths, illnesses and impact from diseases and public health emergencies.
- Increase local community, civil society and Red Cross Red Crescent capacity to address the most urgent situations of vulnerability.
- Reduce intolerance, discrimination and social exclusion and promote respect for diversity and human dignity.

Contact information**For further information specifically related to this operation please contact:**

- **In Paraguay:** Teresa Gamarra, Paraguayan Red Cross Project Coordinator; email: tgamarra@highway.com.py; phone: (595) 98 239 1737
- **In Panama:** Mauricio Bustamante, Acting Head of the Pan American Disaster Response Unit, email: mauricio.bustamante@ifrc.org; phone: (507) 316 1001; fax: (507) 316 1082.
- **In Panama:** **Ghotai Ghazialam** Disaster Management Delegate, PADRU; email: ghotai.ghazialam@ifrc.org; phone: (507) 316 1001; fax: (507) 316 1082
- **In Buenos Aires:** Gustavo Ramirez, Regional Representation for the Southern Cone; email: gustavo.ramirez@ifrc.org;
- **In Panama:** Maria Alcázar, Resource Mobilization Coordinator, Americas; email: maria.alcazar@ifrc.org; phone: (507) 380 0250; fax: (507) 317 1304.
- **In Geneva:** Pablo Medina, Operations Coordinator for the Americas; email: pablo.medina@ifrc.org phone (41) 79 217 3376; fax: (41) 22 730 0395.

[<DREF budget and map below; click here to return to the title page>](#)

DREF OPERATION BUDGET SUMMARY

PARAGUAY FLOODS

MDRPY008

BUDGET CHF

RELIEF NEEDS

Shelter	18,712
Construction Materials	
Clothing & Textiles	21,913
Food	
Seeds & Plants	67,646
Water & Sanitation	
Medical & First Aid	
Teaching Materials	
Utensils & Tools	49,303
Other Supplies & Services	
Total Relief Needs	157,574

CAPITAL EQUIPMENT

Land & Buildings	
Vehicles Purchase	
Computers & Telecom Equipment	
Office/Household Furniture & Equip.	
Medical Equipment	
Other Machinery & Equipment	

TRANSPORT, STORAGE & VEHICLES

Storage - Warehouse	35,000
Distribution & Monitoring	6,155
Transport & Vehicles Costs	2,154
Service fee & Recovery	

PERSONNEL

International Staff	
Regionally Deployed Staff	3,300
National Staff	10,772
National Society Staff	
Consultants	2,308

WORKSHOPS & TRAINING

Workshops & Training	
----------------------	--

GENERAL EXPENSES

Travel	5,642
Information & Public Relations	2,770
Office running costs	1,230
Communication Costs	2,000
Professional Fees	1,385
Financial Charges	10,000
Other General Expenses	

PROGRAMME SUPPORT

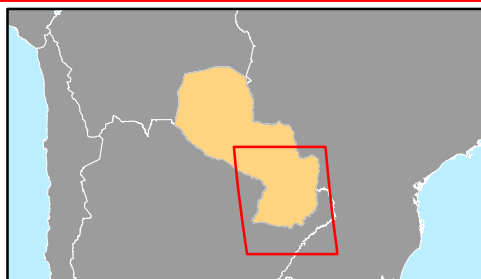
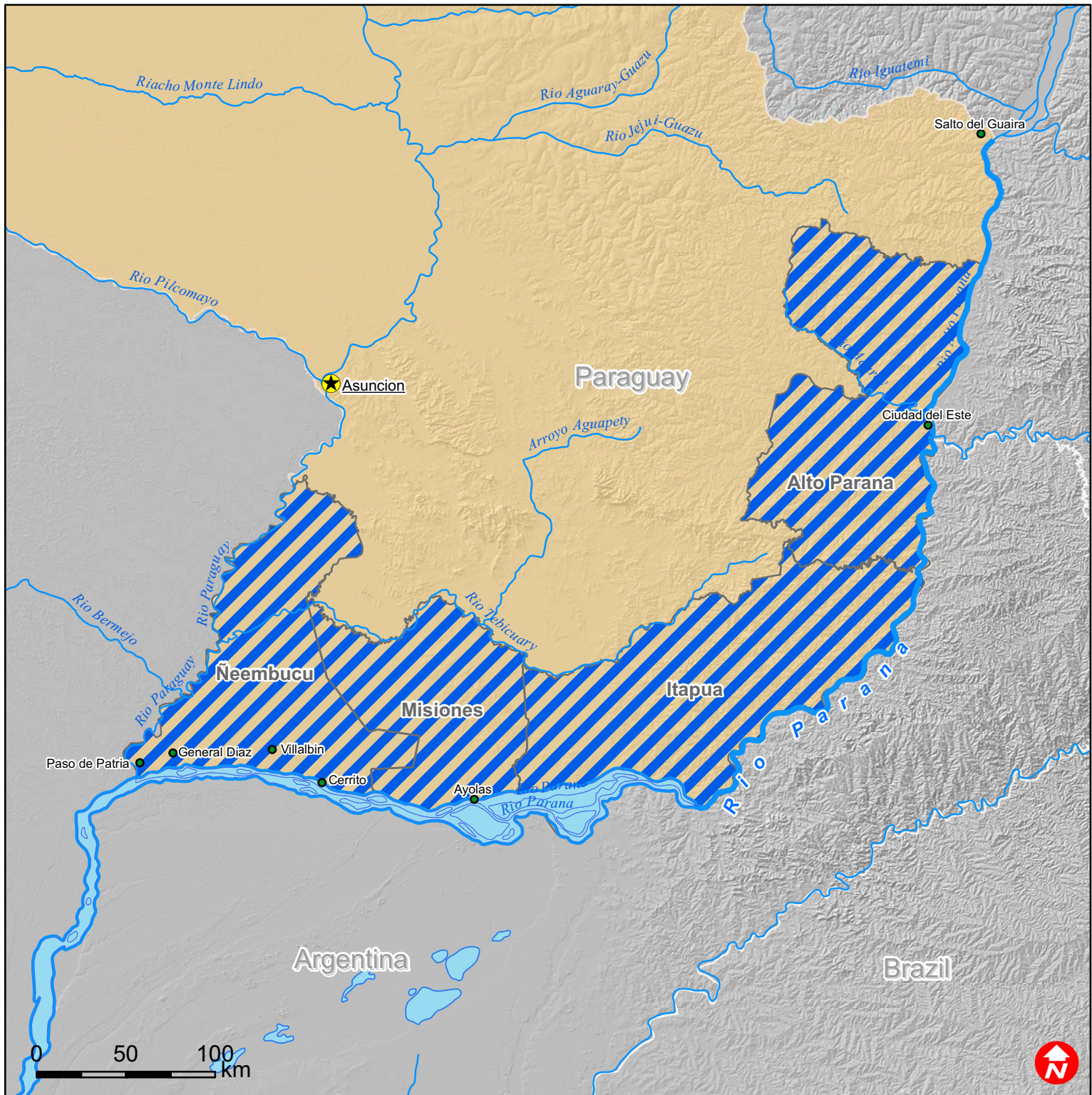
Programme Support - PSR	16,705
-------------------------	--------



Total Operational Needs	99,422
--------------------------------	---------------

DREF ALLOCATION	256,996
------------------------	----------------



Paraguay: Floods



-  Capitals
-  Affected departments