

Information bulletin



International Federation
of Red Cross and Red Crescent Societies

Chad: Cholera

Information bulletin n° 1
GLIDE EP-2010-000165-TCD
24 August, 2010

This bulletin is being issued for information only and reflects the current situation and details available at this time. The Federation is not seeking funding or other assistance from donors for this operation. The Red Cross of Chad will, however, accept direct assistance to provide support to the affected population.

[<click here to view the map of the affected area, or here for detailed contact information>](#)



Cholera outbreak evaluation by the Federation and the Red Cross of Chad joint team

Torrential rains that continue to pour down in the the southern and northern parts of the country have led to flooding with harmful consequences to the local population. The neighbouring countries such as Cameroon, Nigeria and Niger have already experienced cases of Cholera. In Chad, cases of Cholera have been confirmed by the Ministry of health in the region of Lac and Mayo Kebbi East. Three deaths were registered so far. Those regions are disaster prone areas and are badly affected by the continuation of rains. The Chadian Health Ministry organized an emergency meeting with the humanitarian partners and an evaluation mission has been set up to carry out an assessment in the disaster areas. The aim of this mission is to conduct a rapid evaluation of the outbreak and take some actions regarding the immediate assistance to provide.

The Situation

The Sahelian region in general and Chad in particular continue to receive heavy precipitations since the beginning of the rainy season. Torrential rains that started since June have provoked flooding, leaving several families homeless. The access to potable water is difficult. Basic sanitation needs have been deteriorated thereby exposing the population to water borne diseases. Two cases of Cholera were confirmed in Mayo Kebbi. This information is from the head of the Public Health Ministry during the meeting organized with partners on 20 August, 2010. Forty seven (47) suspected cases with two deaths were also registered in the region of Lac, neighbouring Nigeria. If the rain continues more flooded regions will be affected by the Cholera outbreak.

Red Cross and Red Crescent action

The Red Cross of Chad (RCC) with the support of the International Federation has carried out a joint mission with the Ministry of Health and other non humanitarian partners (WHO, UNICEF, and MSF). These three NGOs will support the Health Ministry to provide immediate assistance to the affected people while the RCC will be in charge of detection of suspected cases, transport and referral to health centres, sanitation and sensitization. The National Society local committee of volunteers will actively take part in the evaluation process and provide first aid assistance.

How we work

All International Federation assistance seeks to adhere to the [Code of Conduct for the International Red Cross and Red Crescent Movement and Non-Governmental Organizations \(NGO's\) in Disaster Relief](#) and the [Humanitarian Charter and Minimum Standards in Disaster Response \(Sphere\)](#) in delivering assistance to the most vulnerable.

The International Federation's vision is to inspire, encourage, facilitate and promote at all times all forms of humanitarian activities by National Societies, with a view to preventing and alleviating human suffering, and thereby contributing to the maintenance and promotion of human dignity and peace in the world.

The International Federation's work is guided by [Strategy 2020](#) which puts forward three strategic aims:

1. Save lives, protect livelihoods, and strengthen recovery from disaster and crises.
2. Enable healthy and safe living.
3. Promote social inclusion and a culture of non-violence and peace.

Contact information

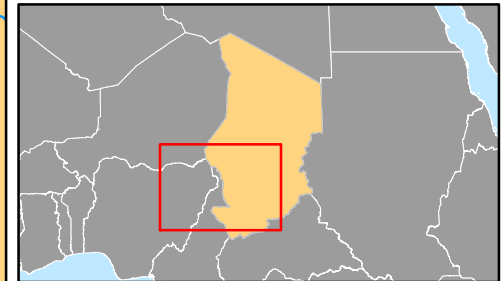
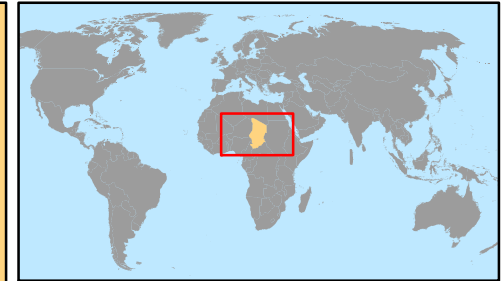
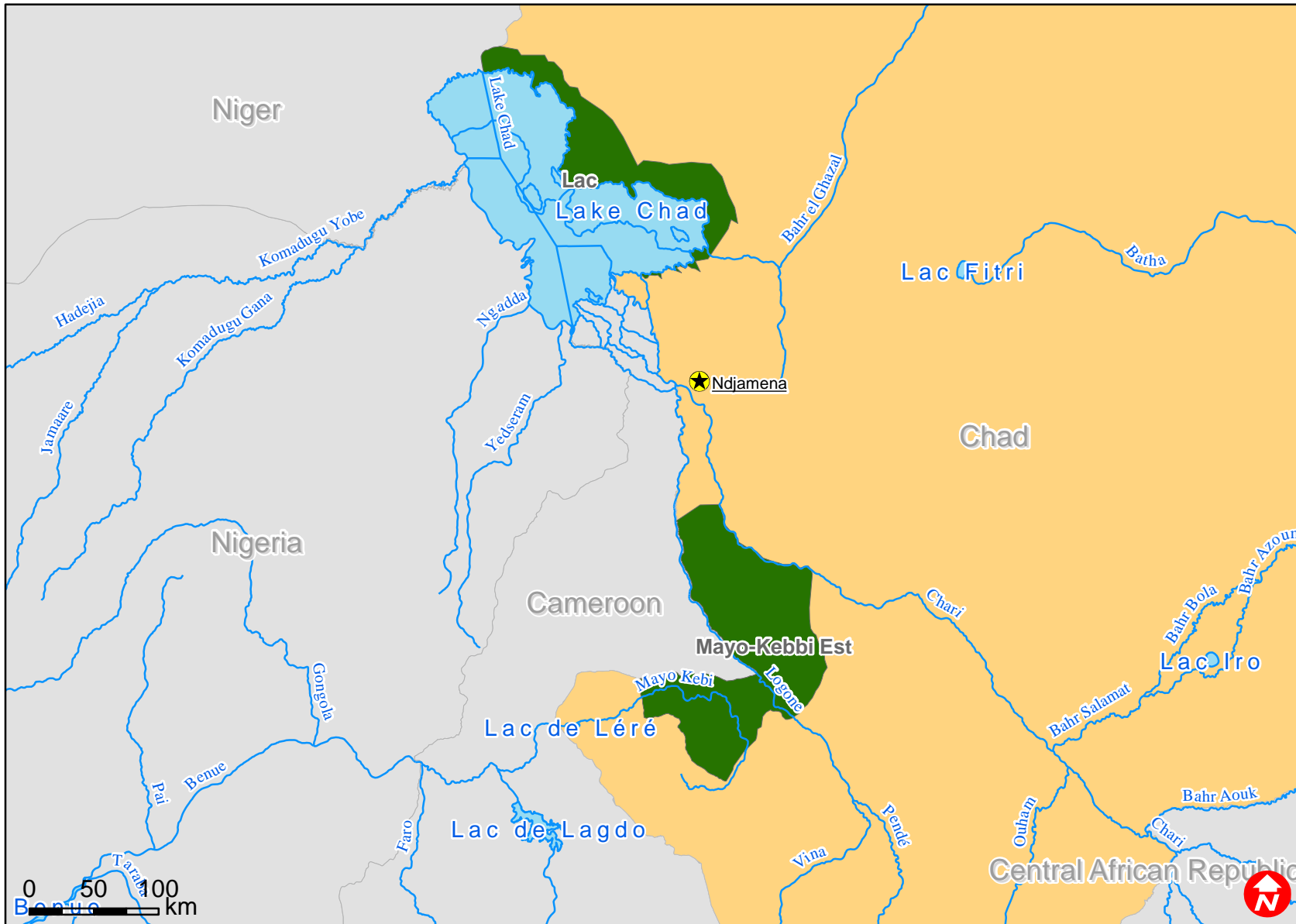
For further information specifically related to this operation please contact:

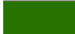
- In **Red Cross of Chad**: Bongor Zam Barminas, Secretary General; +235 629 88 82; Fax: +235 252 02 55; E-mail: sec.general@croix-rouge.td
- In **IFRC acting Country Representation, Chad**: André Zamouangana; phone: +235 267 84 84; or +235 252 23 39; Fax +235 252 23 99; E-mail: andre.zamouangan@croix-rouge.td
- In **Johannesburg**: Dr Asha Mohammed, Head of Operations, email: asha.mohammed@ifrc.org, phone: +27 113 039 700, fax: + 27 118 843 809; +27 118 840 230

[<map below; click here to return to the title page or contact information](#)



Chad: Cholera



 Affected regions