

# Information bulletin



International Federation  
of Red Cross and Red Crescent Societies

## Guatemala: Volcano

Information bulletin n° 1  
GLIDE N° [VO-2010-000103-GTM](#)  
28 May 2010

**This bulletin is being issued for information only, and reflects the current situation and details available at this time.**

On 27 May 2010, the Pacaya volcano located 25 km south of Guatemala City erupted, causing the evacuation of approximately 1,800 people and disrupting neighbouring communities and municipalities. The last major eruption was in 2000.

The Guatemalan Red Cross is currently assessing the situation and evaluating the possibility to request support from the International Federation through the Disaster Response Emergency Fund (DREF).



Fires are one of the results of the Pacaya volcano eruption on 27 May 2010. Prensa Libre: Guatemala.

[<click here to view the map of the affected area, or here for detailed contact information>](#)

## The Situation

On 27 May 2010 at 19:00, the Pacaya volcano erupted, spewing volcanic rock and ash and causing neighbouring communities to be evacuated. In addition, strong winds and volcanic ash exacerbated the situation by affecting departments surrounding the volcano. Approximately 1,800 people were evacuated, 600 of these evacuees were relocated to collective centres in the San Vicente and Villa Canales municipalities.

Currently the Municipal Coordinator for Disaster Reduction (Coordinadora Municipal para la Reducción de Desastres – COMRED) has declared a red alert in the communities of El Rodeo and El Patrocinio located on the southern side of the volcano, which was recommended by the National Institute of Seismology, Volcanology, Meteorology and Hydrology. Some fires have been reported in the surrounding areas of the volcano.

Due to the current situation the La Aurora International Airport has suspended all national and international flights.

## Red Cross and Red Crescent action

The Guatemalan Red Cross, in coordination with local authorities and the National Secretariat of Disasters (Secretaría Nacional de Desastres), activated the Emergency Operations Centre (Centro de Operaciones de Emergencia - COE) to implement actions to respond to the volcanic situation. In addition, an Institutional Orange Alert has been established.

The Guatemalan Red Cross has its members on stand-by to coordinate with the National Coordinating Body for Disaster Reduction (la Coordinadora Nacional para la Reducción de Desastres – CONRED). Also an intervention

team has been integrated into the *Incident Command System* (Sistema de Comando de Incidentes) that has been established in San Vicente Pacaya.

The International Federation of Red Cross and Red Crescent Societies through its Pan America Disaster Response Unit (PADRU) and the Regional Representation for Central America and Mexico, is in constant communication with the Guatemalan Red Cross and has a Regional Intervention Team member on stand-by.

## How we work

All International Federation assistance seeks to adhere to the [Code of Conduct for the International Red Cross and Red Crescent Movement and Non-Governmental Organizations \(NGO's\) in Disaster Relief](#) and the [Humanitarian Charter and Minimum Standards in Disaster Response \(Sphere\)](#) in delivering assistance to the most vulnerable.

The International Federation's vision is to inspire, encourage, facilitate and promote at all times all forms of humanitarian activities by National Societies, with a view to preventing and alleviating human suffering, and thereby contributing to the maintenance and promotion of human dignity and peace in the world.

The International Federation's work is guided by [Strategy 2020](#) which puts forward three strategic aims:

1. Save lives, protect livelihoods, and strengthen recovery from disaster and crises.
2. Enable healthy and safe living.
3. Promote social inclusion and a culture of non-violence and peace.

## Contact information

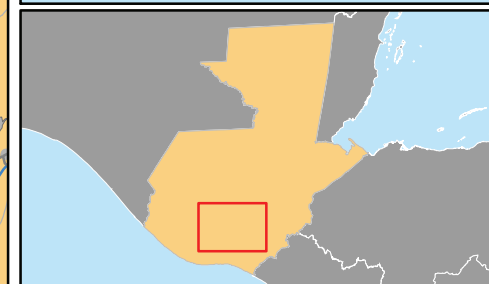
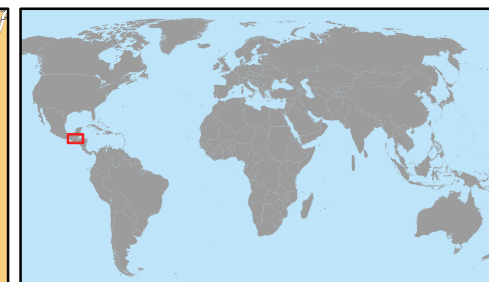
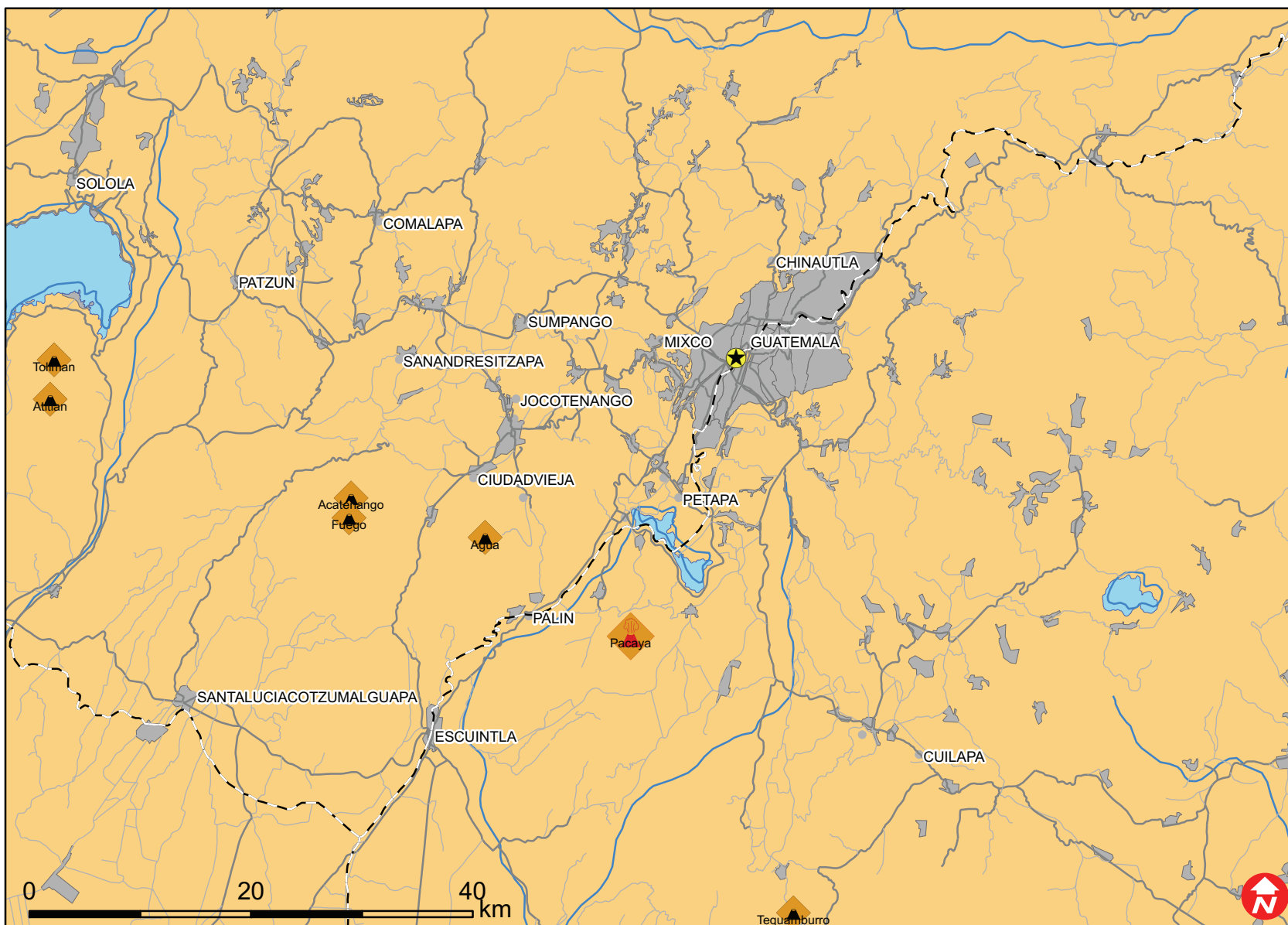
**For further information specifically related to this operation please contact:**

- In Guatemala: Teresa J. Marroqui, Responsible for the GRC's Disaster Response Office, phone: (502) 23816536; email: [desastres@guatemala.cruzroja.org](mailto:desastres@guatemala.cruzroja.org)
- In Panama: Francisco Maldonado; Acting Head of the Pan American Disaster Response Unit (PADRU), phone: (507) 316 1001; fax: (507) 316 1082; email: [francisco.maldonado@ifrc.org](mailto:francisco.maldonado@ifrc.org)
- In Panama: Nelson Castaño, Disaster Risk Management Coordinator, phone: (507) 380-0250, email: [nelson.castaño@ifrc.org](mailto:nelson.castaño@ifrc.org)
- In Costa Rica: Fabricio Lopez, Regional Representative for Central America and Mexico, phone: (506) 526-4092; email: [fabricio.lopez@ifrc.org](mailto:fabricio.lopez@ifrc.org)
- In Geneva: Pablo Medina, Pablo Medina, Operations Coordinator; email: [pablo.medina@ifrc.org](mailto:pablo.medina@ifrc.org); phone: (41) 79 2173376; fax: (41) 22 730 0395.

[<Map below; click here to return to the title page >](#)



# Guatemala: Volcano



-  Pacaya
-  Volcanoes
-  Capitals
-  Built-up area
-  Primary Route
-  Secondary Route
-  Railroad