

Information bulletin



International Federation
of Red Cross and Red Crescent Societies

Indonesia: West Papua Flash Floods

Information bulletin n° 3
GLIDE FF-2010-000198-IDN
19 November 2010

This bulletin is being issued for information only and reflects the current situation and details available at this time. The International Federation of Red Cross and Red Crescent Societies (IFRC) is not seeking funding or other assistance from donors for this operation. Palang Merah Indonesia, (in English *Indonesian Red Cross*), will, however, accept direct assistance to provide support to the affected population.

[<click here for detailed contact information>](#)

After

By the end of October 2010, the flash floods that hit the Teluk Wondama district of West Papua on 4 October 2010 took up to 167 casualties and displaced 9,000 people. 14 villages were affected and Wasior City is the most affected area. Palang Merah Indonesia (PMI) continues to support the affected communities by: providing first aid, conducting relief distribution, providing health clinics, restoring family links, having psychosocial support programmes for the affected people and having water and sanitation activities.



Palang Merah Indonesia volunteers also consist of doctors. The medical action teams from Palang Merah Indonesia are still providing health clinics and first aid to the affected people from the Ambumi village and attending to other affected communities in West Papua.

Photo credit: Dhora Mathilde, French Red Cross.

The Situation

By the end of the emergency response timeline on 2 November 2010, Wasior City has begun to gradually recover as the markets have started to go back to normal. The local government has been fixing and cleaning the public facilities. The transportation to Teluk Wondama has begun to recover as well as the communication.

Based on information from PMI, by 15 November 2010, PMI's West Papua chapter reports that the flash floods have caused: the deaths of 173 people, injured 41 people severely, injured 3,376 people lightly, and have caused 118 people to go missing. Also, the number of internally displaced people now stands at 9,011. These people are located in Teluk Wondama, Nabire, Sorong, Jayapura, Manokwari and out of Papua.

The post disaster emergency response plan for the construction of temporary shelters and barracks has started in the third week. These shelters are able to accommodate more than 1,000 households.

Red Cross and Red Crescent action

Since the emergency response, PMI has mobilized up to 119 volunteers. As the operation helps affected communities get back to normal gradually it is noted that the number of staff and volunteers accounted for include 59 members of staff with skills and knowledge on: evacuation, assessment, logistics, restoring family links (RFL), public relations, psychosocial support, medicine (doctors), nursing, administration, and water and sanitation (watsan).

Communications have also improved. The French Red Cross (FRC) has supported PMI with portable multi-mode communications equipment. FRC also provided staff members to operate the equipment for PMI. This has facilitated the process of easy information dissemination from PMI's Teluk Wondama branch to PMI's Manokwari branch.

In addition, Spanish Red Cross and Australian Red Cross also helped PMI by sending two staff members to help with water and sanitation; and temporary shelter respectively.

In the meantime, PMI volunteers continue to conduct a needs assessment of camps for internally displaced people (IDP). Three field kitchen sets were distributed and are being used for cooking meals at the camps for internally displaced people. PMI has also distributed relief items to people who were affected. See the following table:

No	Item	Quantity
1	Family kits	211 packages
2	Hygiene kits	621 packages
3	Mats	193 pieces
4	Baby kits	234 packages
5	Thermos	172 pieces
6	Milk	179 boxes
7	School kits	294 packages
8	Food	709 packages
9	Biscuits	95 cans
10	Instant noodle	135 boxes
11	Clothes	1,267 pieces
12	Mineral water	4,312 bottles

PMI's restoring family links services has been on going from 25 to 31 October 2010. It was revealed that there are: 1,506 'I'm alive' cases; 38 'I'm looking for' cases, and 8 closed cases because information provided in those cases were unclear. In the meantime,

PMI's psychosocial support team is still conducting activities in affected communities together with the Department of Health.

Into the fourth week after the disaster, PMI's Medical Action Team found out that many displaced people who visited the clinic are suffering from intestinal worms. Furthermore, malaria, diarrhoea and acute respiratory infections are common diseases among the displaced people. By 30 October 2010, 629 cases of acute respiratory infection were identified.

PMI's water and sanitation team continues to distribute clean water to IDP camps. Manokwari receives delivery on a daily basis. Meanwhile, the water and sanitation team keeps on monitoring and repairing water installations in Wasior City IDP camps.

PMI's plans for the next two months includes keeping up the command posts in Wasior City and Manokwari. At this juncture, the posts will focus on: restoring family links; psychosocial support and water and sanitation programmes. Following, PMI is preparing recovery plans over the next three months.

How we work

All International Federation assistance seeks to adhere to the [Code of Conduct for the International Red Cross and Red Crescent Movement and Non-Governmental Organizations \(NGOs\) in Disaster Relief](#) and the [Humanitarian Charter and Minimum Standards in Disaster Response \(Sphere\)](#) in delivering assistance to the most vulnerable.

The International Federation's vision is to inspire, encourage, facilitate and promote at all times all forms of humanitarian activities by National Societies, with a view to preventing and alleviating human suffering, and thereby contributing to the maintenance and promotion of human dignity and peace in the world.

The International Federation's work is guided by [Strategy 2020](#) which puts forward three strategic aims:

1. Save lives, protect livelihoods, and strengthen recovery from disaster and crises.
2. Enable healthy and safe living.
3. Promote social inclusion and a culture of non-violence and peace.

Contact information

For further information specifically related to this operation please contact:

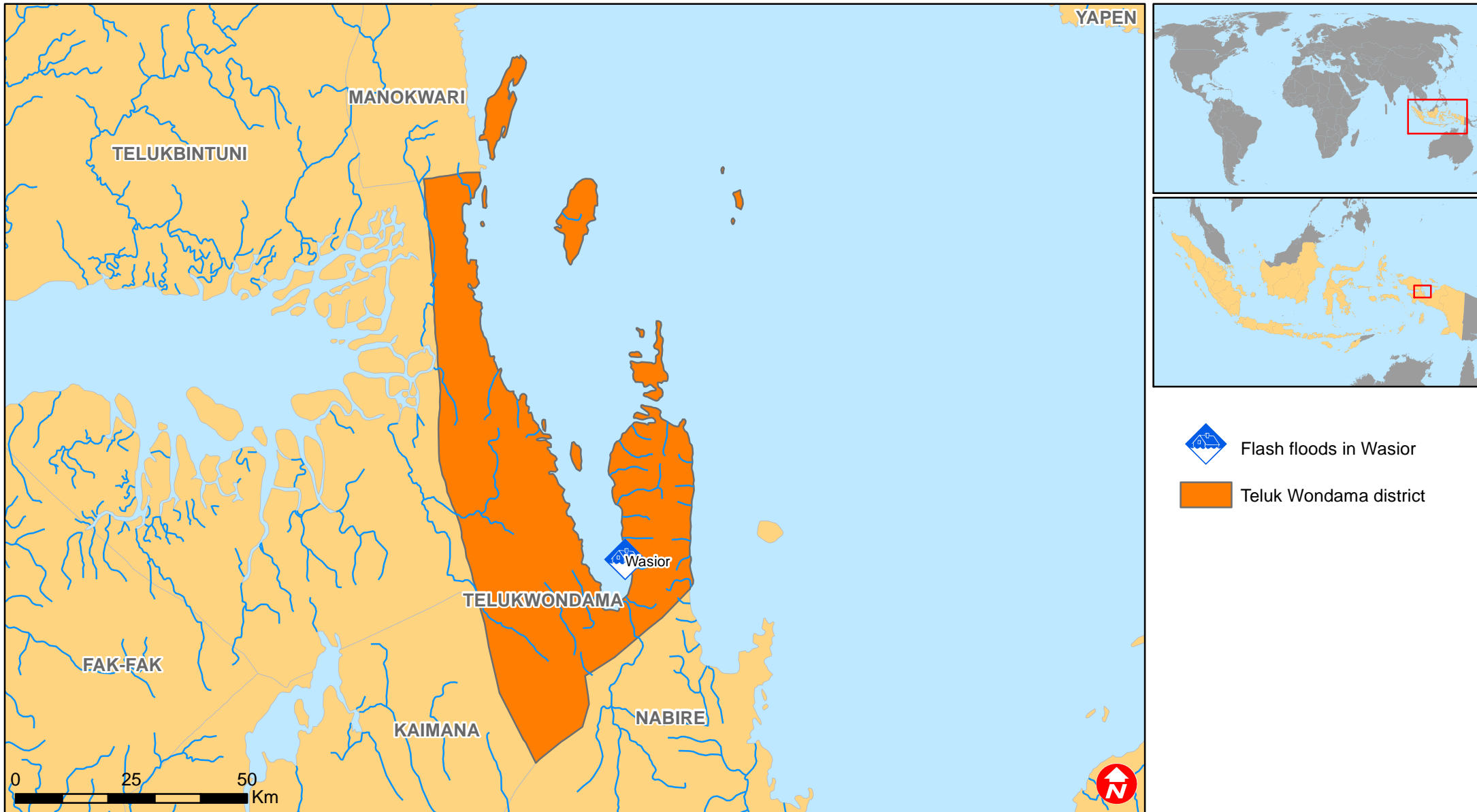
- Indonesian Red Cross (PMI): Ir. Budi Atmadi Adiputro, Secretary General, budi_adiputro@pmi.or.id or pmi@pmi.or.id phone: +62 21 799 2325 ext. 221; fax: +62 21 799 5188
- Federation country office in Indonesia: Phillip Charlesworth, Head of Country Office; email: phillip.charlesworth@ifrc.org; mobile: ++62 811 824 859, phone: +62 21 7279 3440; fax: +62 21 7279 3446
- Federation Southeast Asia Regional Office, Bangkok; phone: +662 661 8201; fax: +662 661 9322:
 - Andy McElroy, Regional Programme Coordinator; email: andy.mcelroy@ifrc.org
- Federation Asia Pacific Zone Office, Kuala Lumpur; fax: +603 2161 0670:
 - Jagan Chapagain, Deputy Head of Zone Office; email: jagan.chapagain@ifrc.org; phone: + 603 9207 5700
 - Alan Bradbury, Head of Resource Mobilization and PMER; email: alan.bradbury@ifrc.org; phone: +603 9207 5775
 - Heikki Väättämoinen, Operations Coordinator, phone: +603 9207 5729; mobile: +60 12 2307895; email: heikki.vaatamoinen@ifrc.org

Please send pledges of funding to zonerm.asiapacific@ifrc.org

[< click here to return to the title page or contact information >](#)



Indonesia: Flash floods



The maps used do not imply the expression of any opinion on the part of the International Federation of the Red Cross and Red Crescent Societies or National Societies concerning the legal status of a territory or of its authorities.