

www.ifrc.org  
Saving lives,  
changing minds.

## Emergency appeal Chad: Food insecurity

 International Federation  
of Red Cross and Red Crescent Societies

**Emergency appeal n° MDRTD009  
GLIDE n° EP-2012-000001-TCD  
25 February 2012**

**This Emergency Appeal seeks CHF 2,239,273 in cash, kind, or services to support the Red Cross of Chad (RCC) to assist 123,000 beneficiaries (24,600 households) for 12 months, and will be completed by the end of February, 2013. A final report will be made available three months after the end of the operation (by end of May 2013).**

CHF 231,613 was allocated from the IFRC Disaster Relief Emergency Fund (DREF) to support this operation from December 2011 to March 2012. The DREF operation has enabled the RCC to mount an immediate response to the food security situation in two of the most affected regions (Kanem and Lac). The DREF supported the deployment of a Regional Disaster Response Team (RDRT) member with food security expertise to support the RCC to carry out initial assessments and support the set-up of the emergency response.



**Volunteers from RCC local branches checking distribution lists with beneficiaries in Kenem region. /Photo: RCC**

This appeal will incorporate the DREF operation, and continue on a scale commensurate with the evident needs. A first assessment mission took place in late December 2011. In addition to assessing the status of the communities and meeting with the RCC branches in the area, the RCC also met with local authorities, health clinics, their personnel, and NGOs. Assessments identified 8,600 households in need of direct food assistance, to cover the gap created through declining food stocks and income reserves. Accordingly, through this operation, immediate food needs for households will be met through blanket food distributions targeted to provide enough for the whole family and ensure that children receive their full ration.

This operation will also undertake longer-term interventions, such as supporting improved agricultural production through agro-pastoral strengthening activities, income generating projects and other livelihoods projects, which will support improved food and income access and therefore lead to improved nutritional status for malnourished children in targeted households. It will also support improved community knowledge and behaviours around nutrition and food utilization as central to achieving better food security. RCC volunteers will be trained to demonstrate to communities how to prepare food and improve food hygiene. Around 123,000 beneficiaries or 24,600 households are due to benefit from the wider assistance, including longer-term initiatives to promote livelihoods and better nutritional and hygiene knowledge. This includes 5,000 children with poor to critical malnutrition. The most vulnerable are in urgent need of referral for specialized care and nutritional supplements. A further 500,000 estimated indirect beneficiaries will benefit from the operation, as a result of nutrition and hygiene promotion activities.

Although the whole of the Sahel region of Chad is affected by food insecurity, this operation focuses on Kanem and Lac regions, identified as the hardest hit areas in terms of malnutrition levels, crop/food production levels, food availability and accessibility, and high price increases. The operation is part of wider support to National Societies across the region

in the current food security crisis. The IFRC will look to share experience and resources across the region to optimise the response. Drawing on such experiences, along with ongoing assessment and project monitoring data, a more detailed operational strategy and plan of action will be elaborated for the intervention.

[<click here for the Emergency Appeal Budget; here for a map of the affected area; or here for contact details>](#)

---

## The situation

The food security situation in the whole of the Sahel region is a major cause for concern at present. This is particularly the case in Chad, where the cumulative effects of multiple underlying causes of food insecurity and nutritional deficiencies are having a serious impact on the coping capacity of vulnerable communities. According to an OCHA report of December 2011, 1.6 million people in Chad are affected by the crisis.

During the years 2010-2011, rainfall was erratic in the country and the water levels have not been favourable for crop production or animal husbandry. The RCC reports that rainfall in the area was 50% lower than the previous year in 2011. Across the country, rainfall irregularities have caused a serious water deficit and reduced planting levels by 43% in the Sahel region of Chad and 18% in the Sudan region of the country compared to 2010. Attacks of pests (locusts, caterpillars, birds etc) have also contributed to the decline in harvests and in harvestable areas. Total National cereal production, was estimated at about 1,620,000 MTs last year, now has a deficit of 455,000 MTs - a drop of 50% over the previous year and 23% on the average of the last five years. This deficit is very marked in the Sahel region of Chad where agricultural production has reduced by more than 56% over the production of last year, and the two areas of Kanem and Lac are particularly vulnerable within the Sahel region.

Although the overall rate of acute malnutrition across the country has decreased since the post-harvest period in March 2011, it remains at critical levels in some key regions and areas. Specifically, the acute malnutrition rates are above the emergency rate of 15% in the regions of Kanem, Lac, Wadi Fira, Barh el Ghazal, Batha, Hadjer Lamis and Salamat. The nutritional situation is critical in most parts of the Sahel region of the country, where rates remain above 10% and support systems, such as health and nutritional centres are inadequate for the needs. In general, the prospect for food security in the Sahel and Sudan regions of the country remain worrying.

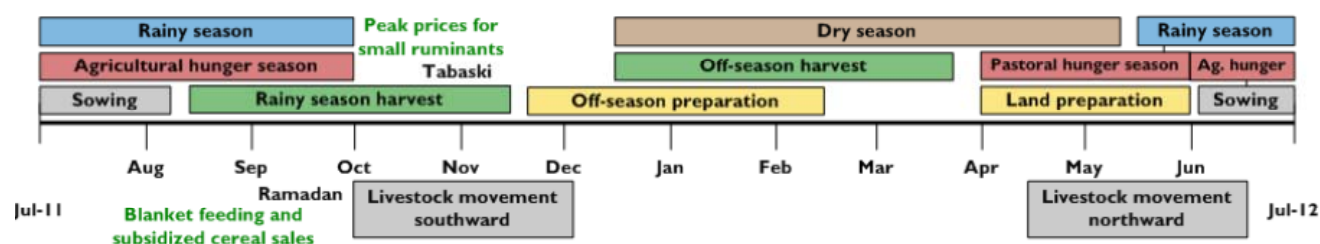
There are also problems in the areas of Borkou, Ennedi and Tibesti, where massive returns of farm workers from North Africa, plus the interruption in supplies from Libya, have increased demand on local food supplies. Many communities are now having to source food from nearby regions farther south, which are themselves in a precarious situation. This appeal is focusing on the 2 regions of Kanem and Lac given the existing experience of the RCC in these regions, the presence of other humanitarian agencies and the levels of vulnerability and food insecurity in these areas.

In addition, pastoralist communities have been badly affected, with the lack of rainfall leading to poor pasture and a scarcity of drinking water for their livestock, again, especially in the Sahel region of the country. The poor quality of pastures and water points has led to the movement of herds to the south of the country (the south of Gera, Salamat and Lac), which will put further pressure on fragile pasture, reinforcing a cycle of weaker resource management and declining natural assets. Chad is characterised by a lack of functioning water and sanitation (WATSAN) systems in the country, with deficiencies in access to proper sanitation and latrines, access to drinking water, and hygienic behaviour. It is therefore important to ensure that food security measures are combined with WATSAN interventions to maximise effectiveness and prevent the risk of cholera, which is endemic in the country.

In the markets, the scarcity of grain is expected to push prices higher. This trend will increase across a number of key foodstuffs, and is likely to increase as Chad moves into the lean season earlier than the normal timeframe of March / April 2012.

The combination of these various causes, including the decline in crop production, is likely to deplete food supplies and put real pressure on poor households—whose crop production already falls short of consumption needs—to sell off any assets they may have. The most affected have started selling off assets, emptying food stocks, consuming existing livestock and increasing their debts as ways to cope with the deteriorating situation. There is also evidence of migration especially with those of productive age who are migrating out of the regions to neighboring countries in search of food and work. This is happening ahead of the normal lean season and threatens to increase food insecurity and malnutrition levels (see seasonal calendar below).

### Seasonal calendar and timeline of critical events: Chad



Source: FEWS NET

Faced with this situation, the Government of Chad is deeply concerned about the risk of localized food crises in the coming months. The Government is therefore taking action to address this by:

- Buying food and non-food items and ensuring that these are distributed to beneficiaries in the most affected areas;
- Supporting the purchase, distribution and usage of various counter-season crops (e.g. winter vegetables);
- Prioritizing care and assistance for malnourished children;
- Pre-positioning fodder for livestock.

The security situation in Chad remains volatile, especially in the border areas adjacent to the Central African Republic (CAR) and Sudan. The Chadian Government signed a peace agreement in June 2011 with the leader of one of the main militant groups in the region “*Front Populaire pour la Reconstruction*” (FPR). However, the peace deal was broken in January 2012, when Chadian and CAR forces conducted coordinated military operations against the group. The latter is only one of several militant groups operating in Chadian territory and cross-border clashes occasionally occur between Chad and the Central African Republic and Sudan, either between government forces and rebels, or between government forces and bandits. However, militants based in the region last carried out attacks in the capital Ndjamena in 2006 and early 2008. Currently, banditry poses a risk, particularly in the north, which is vulnerable to infiltration by extremists and bandits, and in the east, where foreigners are vulnerable to kidnappings. There is a level of crime, particularly in areas frequented by expatriates and this can increase during times of political instability. However, violent crime is rare.

### Coordination and partnerships

The Government of Chad has called for international help through the Ministry of Foreign Affairs and this emergency appeal responds to that call. Coordination is carried out through a number of channels. There are a number of food security and nutrition cluster meetings held on a weekly basis, led by the Office for the Coordination of Humanitarian Affairs (OCHA). The RCC and IFRC representatives participate in this meeting, and benefit from information sharing with others. They have also been able to share their own plans and priorities that form this emergency appeal.

A joint commission of the RCC and IFRC staff has also met with other external partners to compare information, corroborate initial findings and identify gaps in support. Other agencies and bodies include:

- National Office for Rural Development (ONDR): this national body has carried out a socio-economic and food security assessment recently and has confirmed the alarming nature of the situation in vulnerable communities. They have shared the findings with the RCC, IFRC and other actors. The key findings disclosed that the food security status in the northern and eastern parts of the country is alarming and has been recurrent since 2009, therefore, long-term as well as urgent solutions are required.
- World Food Programme (WFP): WFP is a strong partner with the RCC and IFRC and is working to support food distributions in key areas of the country, particularly in Kanem (where they have a permanent base).
- Action Contre la Faim (ACF): ACF and IFRC have been sharing information on food security situation. ACF works in partnership with RCC volunteers in the areas of nutrition, income generating activities (related to agro-pastoral improvement) and construction of seeds banks.
- Food and Agricultural Organization (FAO): FAO has developed agricultural activities in the marsh areas of Chad, working in a participatory approach with the associations and governmental structures. They also distribute livestock in the communities. The National Society will explore potential areas of cooperation in these areas of work.
- European Community Humanitarian Office (ECHO): ECHO is working closely with the Food Security cluster and is advocating for efforts to address the worsening food security situation in Chad and in the region.

Movement partners have also been active in supporting the emergency response. The RCC has a wide geographical coverage, with local committees and volunteers spread across the entire country. Coordinated by the headquarters in N'Djamena, the RCC has about 20 staff in headquarters, with capacities in: food security, disaster management, community health, water & sanitation, HIV/AIDS, and planning/monitoring and evaluation. There are 21 local committees, ensuring a presence across the country with a total of more than 40,000 volunteers. In the two target regions of Kanem and Lac, the RCC has a presence and the RCC and IFRC have been working in food security programming for the past two years. There is therefore a network of more than 250 volunteers trained and involved in food security related activities.

The focus of the RCC programmes in food security to date have focused on food security in the north of the country (including food distributions and blanket feeding to malnourished children, in partnership with WFP); support to Sudanese refugees; care and advocacy on female genital mutilation (in partnership with IFRC and UNICEF); and health and sanitation sensitization. The RCC is supported by a small IFRC representation located in N'Djamena.

**IFRC:** Since December 2011, the IFRC office in Chad has worked to support and strengthen the capacity of the National Society to respond to the food crisis. This has included the contribution from the DREF of CHF 231,613 to provide food assistance to 5,000 families to start up the operation, which is now extended into this appeal. IFRC has now contributed to the preparation of this appeal and will support the raising of funds to cover the needs outlined below. In consultation with partners, the following priorities have been identified:

- Provision of food for the most vulnerable families in two targeted regions (Kanem and Lac)
- Screening of and referral of the most malnourished children
- Reinforcement of agro-pastoralist production and capacities and cereal banks to improve food availability and access
- Support to build the capacities of nutritional centers (as places of referral)
- Outreach through community mobilization and sensitization activities
- Support to household livelihoods through income generating activities and increased agricultural production
- Rehabilitate water points and wells, build or rehabilitate latrines (in community and nutritional centers) and provide PHAST training and follow up in communities

**French Red Cross (FRC):** The FRC, in partnership with the RCC, has been involved in food security in Chad through a project on focusing on strengthening the capacity of local initiatives in the communities, particularly around income generating activities, nutrition, and support to agricultural associations. The project is located in the Department of Batta West (ATI). The project started in February 2011 and will run for a period of 36 months.

**International Committee of the Red Cross (ICRC):** The ICRC delegation in Chad conducted an assessment on the food crisis and is formulating its planned support, which will be implemented through an extension of their existing budget for Chad. Current plans and challenges are being shared between the Movement partners to ensure good information sharing and a coherent RC/RC Movement approach.

## Red Cross and Red Crescent action

To date, the DREF allocation has enabled the RCC to provide refresher training sessions to volunteers and supervisors in both regions. The refresher sessions focus on planning for beneficiary targeting, registration and ticketing, and other related activities, prior to the distribution process to targeted vulnerable families in the regions of Kanem and Lac.

The DREF funds have also enabled the deployment of an RDRT with food security expertise and have contributed to the National Societies costs to carry out ongoing assessments and to support field work with volunteers. The main role for the trained volunteers is to participate in community mobilisation, distribution of goods and cooking demonstrations at local nutritional centres to improve the quality of food hygiene and nutrition.

The National Society has already had experience of working to improve food security through humanitarian interventions in the same areas and has a volunteer base skilled to support the food crisis response. The in-kind support from WFP has allowed the RCC to extend the scope of the planned action to new areas of Western Chad (still within Kanem and Lac regions) and to increase the number of target beneficiaries from the originally planned 25,000 beneficiaries (5,000 households) to 43,000 (8,600 households).

## The needs

According to the rapid assessment carried out by RCC and IFRC in Kanem and Lac, the RCC has identified 8,600 households for direct food assistance, to cover the food gap that has been created through their declining food stocks and income reserves. Around 123,000 beneficiaries or 24,600 households are due to benefit from wider assistance, including medium to longer-term initiatives to promote better nutritional and hygiene knowledge and education. This includes 5,000 children with already poor to critical malnutrition levels (a rate of 21.9% global acute malnutrition (GAM) and 6.0% severe acute malnutrition (SAM)). The most vulnerable within these communities are in need of urgent referral to receive further care and nutritional supplements.

Although the whole of the Sahel region of Chad is affected, the two western regions of Kanem and Lac have been identified as particularly vulnerable in terms of food insecurity. The RCC action is oriented in these two regions because of analysis that identifies them as the hardest hit areas in terms of malnutrition levels, crop / food production levels, food availability and accessibility, and high price increases.

**Kanem:** The population of Kanem is estimated at around 367,378. Kanem is almost a desert region and a large number of the population are nomadic (livestock herders). People depend mostly on food transported from neighbouring regions and food availability is a real challenge. In terms of production within the region, there is a crucial deficit record of the agricultural harvest (only 2%) with the yield per hectare illustrated below: (source ONDR Kanem).

- Corn: 400 kg/ha in 2010 to 170 kg in 2011
- Millet: 360 kg/ha in 2010 to 85 kg in 2011
- Beans: 300 kg/ha in 2010 to 100 kg/ha in 2011

In the marsh areas this has been compounded by the scarcity of pasture and water points for herds. The effects of increasing food prices and the collateral effects of the crisis in Libya have also worsened the situation.

**Lac:** Lac region has a population of around 467,618. In Lac, as the name suggests, the population generally live along the Lake Chad basin. The main water resources in the region come from Lake Chad, which is fed by the Chari and Logone rivers. Groundwater also exists throughout the area. These conditions allow for two successive maize crops each year on the same plot (corn can be sown in December and June and harvested in March and September).

The waters of the Lake also contain significant fishing potential. Fishing is estimated to bring in 60,000 MTs of fish per year during a drought, 100,000 MTs per year during normal rainfall, and 120,000 MTs during abundant rainfall. This is an important extra source of food and livelihoods; however, when there is a dry period, as is happening now, it is also another loss of food supply and income for many families.

The population therefore mostly depend on fishing or have access to farming and grazing land. However, with the current drought fishing production has seriously reduced and agricultural production has been badly affected. The Lake area has been experiencing growing food insecurity since 2010, following consecutive low rainfalls during the crop years of 2008, 2009 and 2010, causing the Lake to silt up.

Again, rising food prices in the Lac region pose a major challenge to food security. In October 2011 (harvest time), 100 Kg bag of maize was XAF 16,000 and quickly rose to XAF 22,000 in December. During the same period in 2010 it cost XAF 10,000; therefore it has more than doubled in price. Before, it was possible to sell 1 sheep to buy a 50kg sack of corn or millet, but now people need to sell two or three sheep to receive the same quantity of cereal. The situation in these two regions therefore requires urgent action to avoid a severe food crisis.

## The proposed operation

This appeal is proposed to be implemented in two western regions of the country - Kanem and Lac – for the reasons outlined above. The RCC will concentrate its efforts in the remote areas where other actors are not working. The National Society has mobilized its volunteers from these two regions for the whole intervention and is working with local branches to plan and resource the operation. In this way, they will work in close collaboration with the IFRC technical resources to support more effective action and will coordinate with the assistance of other stakeholders.

The goal of the present emergency appeal is to improve the living conditions of up to 123,000 beneficiaries or 24,600 households in total. The target beneficiaries will benefit from the intervention and improve their food security, nutrition

and livelihoods. A further 500,000 estimated indirect beneficiaries will benefit from the operation, as a result of nutrition and hygiene promotion activities. The successful implementation of the activities will depend on the full collaboration with the communities themselves, local authorities and other stakeholders. The plan will be adjusted based on ongoing monitoring and assessments. In general, the operation will focus on the following beneficiaries and main activities:

- 8,600 families (43,000 beneficiaries) will benefit from emergency food distributions (comprising oil, corn, salt, sugar and CSB for the children) and referral to nutritional centers in the hardest hit areas, to support families without access to food and to target the most vulnerable infants and children. In order to improve livelihoods capacities for pastoralist and agro-pastoralist communities, and marshland dwellers in the affected areas and provide more sustainable solutions, the following actions will be taken.-
- a further 2,000 households (10,000 beneficiaries) will receive agricultural seeds and tools before the planting season (improved seeds, fertilizers, and farm tools), as well as livestock support to replenish and build their assets (3 goats) and supplies (fodder etc) for marsh areas, where the populations are dependent on their animals for food and income.
- To reach wider beneficiary groups, 20 business associations (an estimated 400 households or up to 2,000 beneficiaries) will be assisted through cash grants to develop income generating projects to help them find a more sustainable income base.
- A further 10 farmers' communities (2,500 beneficiaries) will be encouraged to resume marshland activities (wadis) through a food for work approach, and fishermen will receive nets, boats etc to help them resume fishing activities. They will also receive agricultural and fishing support to improve their production and find new ways to deal with local challenges in their environment.
- Nutritional information sessions and cooking demonstrations in all 30 nutritional centres targeting 4,000 mothers with moderately malnourished children. This assistance for moderate malnutrition cases (MAM) will help avoid children reaching a state of severe acute malnutrition.
- As a pilot for different approaches and to train volunteers in how best to understand and disseminate these to the communities, the RCC will have an area of arable land on which to practice modern agricultural methods and learn how to transfer this experience to communities.

As mentioned above, it is also important to address chronic WATSAN problems to enhance support to communities around improve short term and longer-term food security.

- 25 wells will be constructed or rehabilitated and 16 water pumps will be provided in communities to provide water and facilitate the irrigation of crop systems.
- Sanitation facilities (latrines etc) will be provided in targeted communities and nutritional centres to serve beneficiaries and PHAST training will be provided to cover an estimated reach of 123,000 beneficiaries across the communities.

The table below outlines the beneficiaries for each programme over the 12 month period. It is estimated that the impact of the operation may have a knock on effect for more than 500,000 indirect beneficiaries (the populations of both regions).

Activity	Estimated beneficiaries	Period
Food distributions	43,000 (25,000 in Kanem and 18,000 in Lac)	3 months
Food security/Livelihoods	14,500 (seeds, livestock, FFW, income generation) <b>57,500 beneficiaries</b>	12 months
Emergency health & care Nutrition	Number unknown (potential referrals/community mobilization) 4,000 (nutrition awareness) <b>20,000 beneficiaries</b>	12 months
WATSAN Hygiene Promotion	61,500 or more (wells, latrines, PHAST) 123,000 (HP) <b>123,000 beneficiaries</b>	12 months
<b>TOTAL</b>	<b>123,000 beneficiaries (all programmes included within this total)</b>	<b>12 months</b>

The successful implementation of the activities will depend on full cooperation with the communities themselves, with local authorities and with other stakeholders/partners. Trained staff and volunteers will continue to monitor and adapt these activities in the communities over the coming months, and the emergency appeal will be revised accordingly. The assessments to date have provided the basis for the following sector interventions:

### Food security and livelihoods

<b>Outcome 1: Enable access to rapid food assistance for up to 8,600 families in Kanem and Lac regions.</b>	
<b>Outputs (expected results)</b>	<b>Activities planned</b>
8,600 families (43,000 beneficiaries) will receive 568 MTs of food supplies to meet basic food ration for three months in targeted areas in Kanem and Lac regions.	<ul style="list-style-type: none"> <li>• Identification and targeting of beneficiaries (infants / children and adults to ensure family level coverage).</li> <li>• Beneficiary registration and distribution of food rations (corn, oil, sugar, salt) to adult people.</li> <li>• Distribution of special food rations (blanket feeding) to 5,000 children with MAM.</li> <li>• Monitoring and reporting.</li> </ul>
<b>Outcome 2: Up to 14,500 beneficiaries in the target populations of Kanem and Lac have access to improved food security through sustainable agricultural, livestock and income generation activities</b>	
<b>Outputs (expected results)</b>	<b>Activities planned</b>
1,000 targeted families (5,000 beneficiaries) are able to benefit from seeds, agricultural tools and other facilities to protect crops.	<ul style="list-style-type: none"> <li>• Identify beneficiaries for seed.</li> <li>• According to a seasonal calendar, identify the best time to provide the agricultural inputs to ensure their intended use.</li> <li>• Explore local practices and more drought resistant seed varieties to support more sustainable livelihoods.</li> <li>• Distribute purchased seeds and tools.</li> <li>• Monitoring agricultural phases.</li> <li>• Set up grain and seeds banks in the communities.</li> <li>• Sensitization of communities on use of food supplies and setting up of granaries.</li> </ul>
1,000 targeted families (5,000 beneficiaries) are provided with livestock, veterinary materials, medicines and others livestock facilities.	<ul style="list-style-type: none"> <li>• Establish criteria and identify beneficiaries for livestock assistance.</li> <li>• Purchase appropriate livestock and distribute livestock to the identified beneficiaries.</li> <li>• Work with local authorities to set up and carry out vaccination campaign.</li> <li>• Monitor livestock health and further needed support.</li> </ul>
10 marshland communities (2,500 beneficiaries) receive support to sustain and diversify their income base through food for work and support for agricultural diversification.	<ul style="list-style-type: none"> <li>• Identification of vulnerable marsh areas / communities.</li> <li>• Initiate agricultural activities in marshlands, such as distribution and planting of counter season seeds to diversify agricultural base and provide additional food yield.</li> <li>• Pay (in kind) food to people involved in supporting agricultural and other activities.</li> <li>• Monitor and report.</li> </ul>
Cash grants for 20 business associations to support 20 income generating projects in the targeted regions (2,000 beneficiaries).	<ul style="list-style-type: none"> <li>• Identify and work with business associations to enhance targeting and capacity.</li> <li>• Identify the mechanism to deliver the cash grants and the value and number of installments of the cash grants.</li> <li>• Support 20 micro-projects initiated within the communities through the associations in areas of that increase food production and availability in the area including fishing and conservation of seasonal vegetables and fruits.</li> <li>• Monitor progress of the micro-projects.</li> </ul>

### Emergency health and care and nutrition

<b>Outcome: The incidence and severity of malnutrition cases in the two regions are reduced through the RCC contribution (monitoring and mobilization) to 4,000 beneficiaries.</b>	
<b>Outputs (expected results)</b>	<b>Activities planned</b>

From the surveyed communities, children identified as malnourished are referred to nutritional centers.	<ul style="list-style-type: none"> <li>• Volunteers trained or refresher trained in malnutrition surveillance.</li> <li>• RCC branches / volunteers undertake malnutrition surveillance of households in the target communities and monitor for cases of SAM / and or MAM.</li> <li>• Immediate referral of children with SAM and follow up on children identified with MAM (through referral or supplementary food assistance).</li> <li>• Community mobilization against malnutrition.</li> </ul>
30 targeted nutritional centers are rehabilitated and used as centers to improve food and nutrition awareness to 4,000 mothers malnourished children.	<ul style="list-style-type: none"> <li>• Assessment to identify 30 nutritional centers.</li> <li>• Volunteers train women in local communities to improve food preparation and nutritional / hygiene content.</li> <li>• Follow up nutritional monitoring at household level.</li> </ul>

### Water and sanitation

#### Outcome 1: Water for livestock and planting in marshlands is sufficient in the targeted areas and will support the agriculture and livestock for up to 61,500 beneficiaries

Outputs (expected results)	Activities planned
25 wells and other water sources are rehabilitated in communities to provide water supply for planting and livestock for marshland associations and communities.	<ul style="list-style-type: none"> <li>• Rehabilitate 25 wells in marshlands or other areas for use by the marshland associations, communities and visitors</li> <li>• Provide 16 water pumps to facilitate irrigation system.</li> <li>• Irrigation systems or support provided to ensure water can be used to irrigate crops in the marshlands.</li> </ul>

#### Outcome 2: Sanitation facilities in 10 nutritional centers and in 20 target communities are improved (4,000 women and their children, plus visitors to the nutritional centres and households in target communities).

Outputs (expected results)	Activities planned
30 latrines are constructed or rehabilitated.	10 latrines in 10 nutritional centers and 20 latrines in communities are constructed or rehabilitated and will be used during the nutritional demonstrations or communal activities.

#### Outcome 3: Hygiene promotion is provided to staff and users of the centres and to communities to support health and follow up for malnourished children and vulnerable (123,000 beneficiaries in both regions).

Outputs (expected results)	Activities planned
Hygiene promotion and PHAST training is provided to communities.	<ul style="list-style-type: none"> <li>• Staff / volunteers receive training in PHAST methodology and in hygiene promotion.</li> <li>• Volunteers provide hygiene promotion education to staff of nutritional centers and to patients / visitors (who take this information back to their communities).</li> <li>• Further hygiene education is carried out at community level as part of RCC monitoring and follow-up.</li> </ul>

### Disaster risk reduction

#### Outcome: Disaster Risk Reduction awareness and capacity is increased in the affected communities and in the local National Society structure.

Outputs (expected results)	Activities planned
The NS together with the communities set a strategy to reduce the impact of disasters in their local areas.	<ul style="list-style-type: none"> <li>• Train 100 additional volunteers on Disaster Risk Reduction and early warning systems in each of 2 regions.</li> </ul>

	<ul style="list-style-type: none"> <li>• Establish a RCC branch disaster preparedness team in the targeted communities.</li> <li>• Develop early warning system for food security and test it in simulation.</li> </ul>
--	---

### Capacity building

**Outcome: National Society branches of Kanem and Lac have received support for their infrastructure and well functioning.**

Outputs (expected results)	Activities planned
National Society is reinforced at both headquarters and in the targeted branches, to support this operation and future crises.	<ul style="list-style-type: none"> <li>• Training and refresher training is provided to Red Cross volunteers in distribution techniques, cash transfer programming, food security, nutritional surveillance, community animation, supplementary feeding, agricultural practices, livelihoods approaches, income generation and hygiene / nutrition promotion, community mobilization and sensitization. All training will ensure compliance with and promotion of Sphere standards.</li> <li>• Provide materials and equipment to reinforce the branches in the target areas, including the provision of material supplies such as motorbikes, computers, mobile phones to enable the branch staff and volunteers to be able to deliver.</li> <li>• Rehabilitate warehouse space for the operation.</li> <li>• Rehabilitate 2 offices of the local committees in the affected areas.</li> </ul>

### Logistics

Professional logistical support to the operation will be provided in accordance with IFRC standards, procedures and processes. Activities will include the following:

- Mobilize relief items pre-positioned in IFRC's GLS stocks for emergencies and ongoing operations.
- Coordinate between RCC and IFRC programme managers and in coordination with Dubai Logistics Office and the Sahel Regional Office in Dakar to provide timely and cost-efficient sourcing options for items required in the operation
- Utilize existing warehousing facilities and vehicles for storage and efficient dispatch of goods to the final distribution points
- Support RCC in securing adequate storage solutions
- Ensure that local procurement of goods, services and transport is in line with IFRC procurement standards and procedures
- Support RCC with purchase and/or transportation of food, seeds and tools, and livestock to distribution sites and communities
- Liaise and coordinate actions with other key actors so that that the IFRC logistics operation processes use all information to be as efficient and effective as possible
- Provide and maintain an up-to-date mobilization table on the IFRC's disaster management information system (DMIS)

### Security

The Country Representative is responsible for the security of all IFRC personnel in country and all IFRC operations are to be conducted in accordance with IFRC minimum security requirements. In particular:

- Personnel are to be briefed and updated on the security situation relevant to their location
- Security guidelines are to be kept up to date and staff kept informed of these
- RC/RC personnel are responsible to stay informed about security where they are working and to measure the temperature/identify any security problems

- All field visits are to be approved and then monitored and all personnel are to have a minimum of two means of communications when deploying to the field
- All personnel are to understand country level medivac plan and are to have key contact details in the case of an accident
- All security incidents and/or suspected security incidents are to be reported to the Zone Security Coordinator.

Due to the current uncertainty as to the various militant groups or alliances in country, and taking into account the potential for a spill-over from the current conflict in Mali, it is recommended that a security support mission takes place in the first phase of the response. The main objective will be to enable the implementation of a basic security framework for future IFRC visits/operations in Chad as well as supporting the RCC and partners.

### **Communications – Advocacy and Public information**

Maintaining a steady flow of accurate information between the field and other major stakeholders is vital for fundraising, advocacy and maintaining the profile of the emergency operation. During an operation, communications between affected populations and the Red Cross and Red Crescent, as well as with donors, is an essential mechanism for effective disaster response and fundamental to promoting greater quality, accountability, and transparency. Communications activities are closely coordinated with the Communications team in the Sahel Regional Office, the Africa Zone and the communications team in the Geneva Secretariat, that is why a mission if IFRC Africa communication officer is expected in February 2012.

The Communications Coordinator and audio visual person from the IFRC Africa Zone will visit Chad from 8-14 February to gather high quality photos, film and written content that highlight the humanitarian situation and the potential response of the Red Cross Red Crescent Movement, as well as supporting the RCC with communications advice. The Coordinator will also provide further support to the Dakar Regional Office on further dissemination of this and other media information on the Sahel crisis, to raise awareness and inform resource mobilization and advocacy messages.

Donors and national societies will receive information and materials they can use to promote the operation. Relevant information and advocacy materials, including audio-visual products, will be channeled through IFRC's public website – [www.ifrc.org](http://www.ifrc.org).

Activities will include the following:

- Produce press releases and news stories
- Engage proactively with media (national and international) to highlight the needs of the affected people and to profile the response of the RCC, including use of established IFRC social media tools.
- Develop media packages, including facts and figures, issue briefs and audiovisual products for distribution to partner national societies, other partner organizations and media
- Develop and produce communications products that highlight achievements of the operation
- Support field visits by communications colleagues from partner national societies and donor agencies
- Support programme teams in designing and producing specific materials, including forms, banners, brochures, posters and signage
- Support programme teams to ensure consistent engagement with beneficiaries as part of IFRC's commitment to greater accountability to affected communities

### **Capacity of the National Society**

The RCC has extensive experience of responding to emergencies and carrying out rehabilitation activities. It works closely with communities and with voluntary networks. Its network of volunteers has been active in emergency operations for many years, including recent assistance to Sudanese refugees in Chad and a cholera epidemic. The National Society would seek additional support for planning, monitoring, reporting and volunteer management to help it implement this operation, and to help reinforce its surge capacities to promote a coordinated Red Cross Red Crescent response and efficient information sharing. A Food Security coordinator will oversee the emergency response and longer term operations, to ensure the durability of the programmes. The National Society, supported by the IFRC, a RDRT and its own NDRT will support and build capacity of the local RCC committees in affected areas, providing relevant training and coaching. In addition, the offices of the affected regional committees will be equipped with adequate materials to facilitate the implementation of relief activities.

## Capacity of the IFRC

The IFRC's presence in Chad is maintained by a Country Representative with a background in disaster management and food security. There are also IFRC national staff providing support in finance and administration, logistics, and monitoring and evaluation, plus additional support from an RDRT specialized in food security and livelihoods. Three delegates (food security/livelihoods, water & sanitation and logistics) will need to be deployed for technical support to the National Society and for monitoring of activities according to the appeal.

## Budget summary

See attached budget (Annex 1) for details.

Matthias Schmale  
Under Secretary General  
Programme Services Division

Bekele Geleta  
Secretary General

## Contact information:

**For further information specifically related to this operation please contact:**

- **IFRC Country Representation:** Belly Mamadou Diallo; phone: +235 66 27 84 84 or + 235 252 23 39; email: [belly.diallo@ifrc.org](mailto:belly.diallo@ifrc.org)
- **IFRC Zone:** Daniel Bolanos, Disaster Management Coordinator, Africa; phone: +254 (0)731 067 489; email: [daniel.bolanos@ifrc.org](mailto:daniel.bolanos@ifrc.org)
- **Regional Logistics Unit (RLU):** Ari Mantyvaara Logistics Coordinator, Dubai; phone +971 50 4584872, Fax +971.4.883.22.12, email: [ari.mantyvaara@ifrc.org](mailto:ari.mantyvaara@ifrc.org)

**For Resource Mobilization and Pledges:**

- **West and Central Africa hub:** Elisabeth Seck, Resource Mobilization Officer, Dakar; phone: +221 33 869 36 60; mobile: +221 77 450 59 49; email: [elisabeth.seck@ifrc.org](mailto:elisabeth.seck@ifrc.org)

**For Performance and Accountability (planning, monitoring, evaluation and reporting)**

- **IFRC Zone:** Robert Ondrusek, PMER/QA Delegate, Africa phone: +254 731 067277; email: [robert.ondrusek@ifrc.org](mailto:robert.ondrusek@ifrc.org)

## How we work

All IFRC assistance seeks to adhere to the Code of Conduct for the International Red Cross and Red Crescent Movement and Non-Governmental Organizations (NGO's) in Disaster Relief and the Humanitarian Charter and Minimum Standards in Disaster Response (Sphere) in delivering assistance to the most vulnerable.

The IFRC's vision is to inspire, encourage, facilitate and promote at all times all forms of humanitarian activities by National Societies, with a view to preventing and alleviating human suffering, and thereby contributing to the maintenance and promotion of human dignity and peace in the world.

[www.ifrc.org](http://www.ifrc.org)  
Saving lives, changing minds.



The IFRC's work is guided by Strategy 2020 which puts forward three strategic aims:

1. Save lives, protect livelihoods, and strengthen recovery from disaster and crises.
2. Enable healthy and safe living.
3. Promote social inclusion and a culture of non-violence and peace.

# EMERGENCY APPEAL

25-02-12

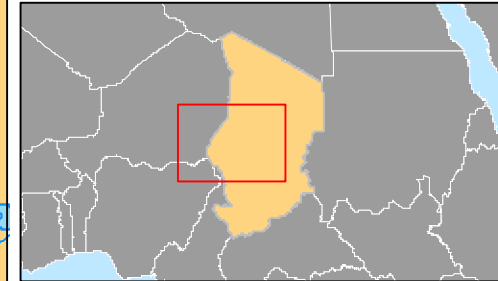
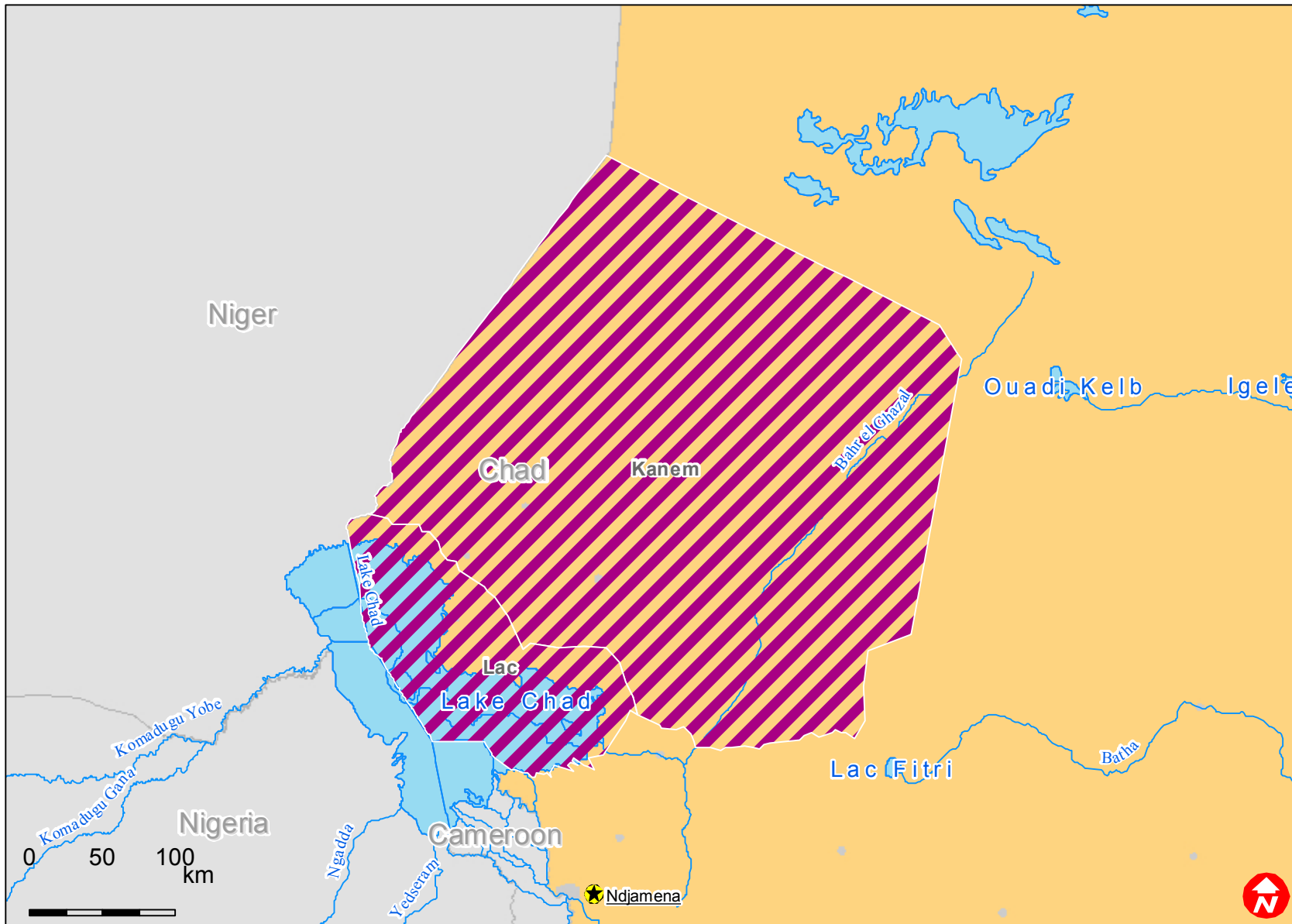
MDRTD009

Chad: Food insecurity

Budget Group	Multilateral Response	Inter-Agency Shelter Coord.	Bilateral Response	Appeal Budget CHF
Shelter - Relief				0
Shelter - Transitional				0
Construction - Housing				0
Construction - Facilities	104,854			104,854
Construction - Materials	19,311			19,311
Clothing & Textiles				0
Food	184,504			184,504
Seeds & Plants	135,922			135,922
Water, Sanitation & Hygiene	328,155			328,155
Medical & First Aid	13,592			13,592
Teaching Materials	75,728			75,728
Utensils & Tools	172,816			172,816
Other Supplies & Services	224,194			224,194
Emergency Response Units				0
Cash Disbursements	38,835			38,835
<b>Total RELIEF ITEMS, CONSTRUCTION AND S</b>	<b>1,297,911</b>	<b>0</b>	<b>0</b>	<b>1,297,911</b>
Land & Buildings				0
Vehicles Purchase	7,767			7,767
Computer & Telecom Equipment	2,330			2,330
Office/Household Furniture & Equipment	8,350			8,350
Medical Equipment				0
Other Machinery & Equipment				0
<b>Total LAND, VEHICLES AND EQUIPMENT</b>	<b>18,447</b>	<b>0</b>	<b>0</b>	<b>18,447</b>
Storage, Warehousing	6,990			6,990
Distribution & Monitoring	388			388
Transport & Vehicle Costs	126,600			126,600
Logistics Services				0
<b>Total LOGISTICS, TRANSPORT AND STORAC</b>	<b>133,979</b>	<b>0</b>	<b>0</b>	<b>133,979</b>
International Staff	288,000			288,000
Regionally Deployed Staff	7,049			7,049
National Staff	111,786			111,786
National Society Staff	52,605			52,605
Volunteers	62,913			62,913
<b>Total PERSONNEL</b>	<b>522,352</b>	<b>0</b>	<b>0</b>	<b>522,352</b>
Consultants	0			0
Professional Fees	35,923			35,923
<b>Total CONSULTANTS &amp; PROFESSIONAL FEE</b>	<b>35,923</b>	<b>0</b>	<b>0</b>	<b>35,923</b>
Workshops & Training	19,029			19,029
<b>Total WORKSHOP &amp; TRAINING</b>	<b>19,029</b>	<b>0</b>	<b>0</b>	<b>19,029</b>
Travel	25,825			25,825
Information & Public Relations	17,961			17,961
Office Costs	14,392			14,392
Communications	11,930			11,930
Financial Charges	4,854			4,854
Other General Expenses				0
Shared Support Services				0
<b>Total GENERAL EXPENDITURES</b>	<b>74,963</b>	<b>0</b>	<b>0</b>	<b>74,963</b>
Programme and Supplementary Services Recov	136,669	0	0	136,669
<b>Total INDIRECT COSTS</b>	<b>136,669</b>	<b>0</b>	<b>0</b>	<b>136,669</b>
<b>TOTAL BUDGET</b>	<b>2,239,273</b>	<b>0</b>	<b>0</b>	<b>2,239,273</b>
<b>Available Resources</b>				
Multilateral Contributions				0
Bilateral Contributions				0
<b>TOTAL AVAILABLE RESOURCES</b>	<b>0</b>	<b>0</b>	<b>0</b>	<b>0</b>
<b>NET EMERGENCY APPEAL NEEDS</b>	<b>2,239,273</b>	<b>0</b>	<b>0</b>	<b>2,239,273</b>



# Chad: Food security



Targetted regions