

www.ifrc.org
Saving lives,
changing minds.

Revised Emergency Appeal

Burkina Faso: Complex emergency (Formerly food insecurity)

 International Federation
of Red Cross and Red Crescent Societies

Emergency appeal n° MDRBF011
Glide n° OT-2011-2000205-BFA
5 December 2012

This Revised Emergency Appeal now seeks CHF 2,093,612 in cash, kind, or services to support the Burkina Faso Red Cross Society (BRCS) in delivering assistance to 105,000 beneficiaries (17,500 households) for a total duration of 12 months. The operation will be completed by the end of March 2013; the final report will be available by the end of June 2013 (three months after the end of the operation).

Appeal target (revised): CHF 2,093,612 [<click here to view the revised Emergency Appeal budget>](#);

Appeal coverage: 47% of the original budget, corresponding to 88% of the revised budget. [<click here to go directly to the updated donor response report>](#)



Red Cross volunteers distributing food to beneficiaries. Photo: Finnish Red Cross

Appeal history:

- The **Emergency Appeal** launched on the 16 April 2012 sought CHF 3,952,739 for 12 months to assist 20,000 agro-pastoral households (120,000 beneficiaries) in six out of the ten of the affected regions of Burkina Faso.
- **Disaster Relief Emergency Fund (DREF)** of CHF 113,532 was allocated on 16 December 2011 to address food insecurity to support BRCS in delivering immediate assistance to 5,500 beneficiaries (1,100 families) with food vouchers for two months in Tin Akoff, in the province Oudalan, in the Sahel region.
- This **Emergency Appeal revision** has reduced the budget from CHF 3,952,739 to CHF 2,093,612 and a decrease in food security beneficiaries from 120,000 to 105,000 that include 2,500 new families (total 17,500 families) affected by flood; threatened by epidemic outbreaks and communities hosting refugees from Mali. This document also reports on progress during the first 6 months of the operation.

Summary:

Burkina Faso faced a severe drought in 2011, especially in the northern regions of the Sahel, Centre-Nord, Centre-Ouest, Est, Nord, and Boucle of Mouhoun. This has resulted in a 21 per cent lower food production than in 2010, when the same regions suffered from moderate food insecurity. With constant increases in the price of food and reduced access to food, many households in the affected areas were not able to meet their basic nutritional needs leaving many families more vulnerable in 2012. In December 2011, the Burkinabe Government called for international assistance to cope with the food crisis.

With the release of CHF 113,532 from DREF as a loan to the Emergency Appeal operation, BRCS was able to support 1,100 vulnerable families with food vouchers in 17 villages in the department of Tin Akoff in the

Province of Oudalan, in the Sahel region. With the food insecurity increasing during the lean period, an Emergency Appeal was launched in April based on the 'twin-track' approach with interventions on emergency relief and recovery strategies. For the mid to longer term, the focus is to improve livelihoods and influence the nutritional status of the beneficiaries through community gardens and income generating activities. Since the start of the rainy season, sufficient grass and water have been available to livestock and as a result of that, families were able to supplement their food with vegetables and milk.

With the timely rains, the overall indications for the next harvest are positive for the 2012 across most of the Sahel countries, including Burkina Faso. There is still a concern over the possible threat of a locust invasion, although the main harvest is soon over.

In the Sahel region, the vulnerability of both refugees and the host population has increased particularly in the provinces of Oudalan, Séno, Soum and Yagha.

Since January, with the conflict affecting the north of Mali, there has been a huge influx of refugees in Burkina Faso. UNHCR estimates that 107,929 refugees – up from 56,000 in May – are now spread across five official (and nine unofficial) sites in Burkina Faso, mainly in Damba, Sérélio, Mentao, (Sahel region), Somgandé at Ouagadougou, and Bobo-Dioulasso in the west. However, estimate from other sources shows lower numbers and a census is underway to determine an accurate figure. Nevertheless, with the impending military interventions of ECOWAS in the north of Mali, more refugees and displacements will be unavoidable. The situation has further worsened as the refugees have taken refuge in camps or with the host population in regions already struggling with food insecurity, lack of hygiene, clean drinking water, over-crowding and flooding.

Through June to August, heavy rains affected most of Burkina Faso, flooding many villages in the central and north eastern regions with the Sahel region particularly affected. The floods have had varying consequence on the agriculture and have rendered some families homeless. It has also increased the risks of waterborne diseases and cholera outbreak. Some 142 cholera cases have been recorded since March 2012 in areas close to the refugees and the host villages along the border with Niger in the provinces of Oudalan, Yagha, Séno and Soum, in the Sahel region.

The Emergency Appeal revision aims to address these evolving needs by supporting households affected by floods, cholera, influx of refugees and the ongoing food insecurity.

Key elements of the appeal revision, due to funding constraints and the other realities on the ground brings the following changes:

1. A budget reduction to CHF 2,093,612 due to limited funding, leading to an appeal coverage of 88% against 47% before budget revision.
2. The interventions, originally planned over six regions, will now focus on four regions of Sahel, Centre-Nord, Nord, and Boucle of Mouhoun. The two regions that have been removed are the Centre-Ouest and Est regions.
3. Based on the revised assessment or ongoing monitoring of the operation, there are cuts made in food security activities that are no longer necessary. The revision however incorporated the additional needs of those affected by floods, epidemic outbreak and the vulnerable communities that are hosting refugees from Mali. The activities will focus in ten provinces of the four regions.
4. The following outcomes and activities of original Emergency Appeal have been modified:
 - a. The distribution of vouchers for animal fodder is cancelled since livestock could graze soon after the start of the rainy season;
 - b. The purchase of seeds is cancelled since funds were not available on time to be utilised during the sowing season (June to July). However, the purchase and distribution of counter season seeds, tools and fertilizers for the community gardens will continue during the month of November and December;
 - c. The screening of malnourished children has been handled by other humanitarian agencies, hence the training of volunteers on 'screening for malnutrition referrals' is no longer required;
 - d. One distribution of food vouchers has taken place for 11,000 households. The remaining two distributions will be combined into one that will also include the new 1,500 food insecure families hosting the Malian refugees leading to 12,500 households supported.
5. New interventions targeting 2,500 families (affected by floods, epidemics and refugees) in the four provinces of the Sahel region (Oudalan, Yagha, Séno and Soum) include:

- a. Shelter vouchers and support in masonry for the construction or rehabilitation of 100 homes for 100 vulnerable families in the Séno province who will also receive essential non-food items (NFIs).
- b. Water, sanitation and hygiene promotion activities will include non-food item distributions to families affected by floods and the families that continue to remain in danger of waterborne diseases and cholera.

[<Click here for an interim financial report; here for a map of the affected area; or here for contact details>](#)

The situation

Food insecurity:

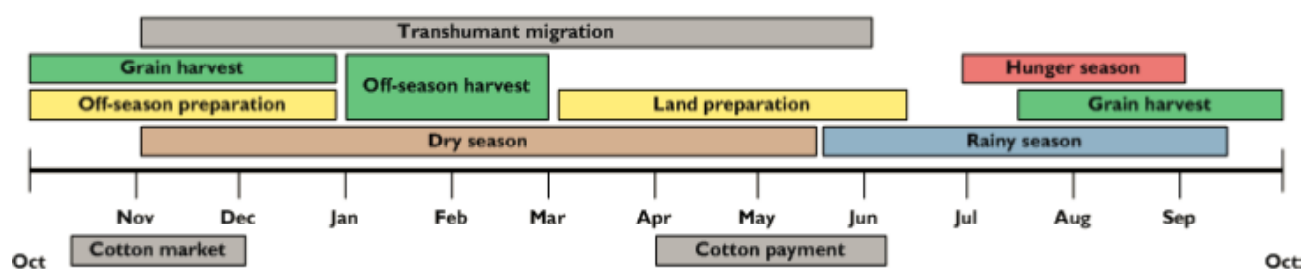
Burkina Faso like several other Sahel countries has experienced drought and erratic rains during 2011 that resulted in severe fodder and cereal deficit of more than 31,000 tons. This has led to an increase in food prices and a reduced access to food for the already vulnerable population. About 80% of people depend on subsistence agriculture for their basic food provision and income. The government estimates that up to 2.85 million people have faced food insecurity in Burkina Faso in 2012.

Cereal is the main staple covering 88% of harvested land. The drought has aggravated the food and nutrition security with cereal production falling by 16% compared to last year. The severity of the crisis lies in the size of the affected north-eastern areas, traditionally an area of high production and a situation made worse from January with the arrival of over 100,000 refugees fleeing the crisis in the north of Mali

Recent estimates show, however, that food insecurity has improved with the introduction of new crops (early millet, maize, niébé, yam, groundnut and fonio) now available on the markets and at household level, and through the continued assistance led by the Government and partners, including the Burkina Faso Red Cross Society and Movement partners. During August to September, the Government sold over 12,000 tonnes of cereal at subsidised prices. There was also substantial distribution of free food through the National Council for Emergency Relief and Recovery (CONASUR) and WFP that took place since August and will continue through November. BRCS supported by the IFRC and the Monaco Red Cross distributed food vouchers to nearly 12,000 families; another distribution of food vouchers for two rations will have been distributed in November to 12,500 households. These distributions will allow the most vulnerable agro-pastoralist households to set aside some of the outputs from their harvest.

Official figures show that the abundant rains this year will have a positive impact on the 2012 harvest in general. The fear remains of a possible locust invasion although the main harvest season will soon be over.

The Government of Burkina Faso and its humanitarian partners have built their responses to the food crisis around the seasonal calendar, focused on seed distributions during the rain season; these programmed interventions have considerably improved the situation.



Since September already, estimates showed that the north western regions of the country no longer face food insecurity whilst the north eastern part still indicated some stress, a situation, which would have fared far worse without humanitarian assistance. The table above estimate for October to December show no to minimal food insecurity for 2012.

Refugees from Mali:

Compared to previous months, the number of refugees from Mali into Burkina Faso has remained stable with around 107,929 refugees. However, the prevailing insecurity in the north of Mali and the agreement reached

with the Economic Community of West African States (ECOWAS) for imminent military intervention to reclaim the northern region may bring a new wave of refugees into Burkina Faso and neighbouring countries. The Government of Burkina Faso and its partners are mobilising resources to provide sufficient food aid to the refugees up to December and are planning medium to longer-term relief into 2013. In August, under overall government coordination, BRCS and the Catholic Relief Service (CRS) distributed 700 tonnes of food (cereal, beans, oil and food complement) provided by WFP to over 86,000 refugees. Ironically, despite the rains, some camps face lack of water sources.

The host communities, mainly in the provinces of Oudalan and Soum in the Sahel region, are particularly affected by the influx of refugees. Already weakened by food insecurity the host communities have not received sufficient support in their efforts to host refugees. Vulnerabilities have increased with lack of access to food, lack of drinking water and further deterioration of the hygiene and sanitary conditions, worsened by recent flooding.

Floods:

The slow start of the rainy season created fear that a similar drought as in 2011 would occur. When the rains finally came, farmers regained hope for the planting season, but on the other hand, some heavy downpours that occurred between June and September created flooding in several regions including the four provinces of the Sahel region. In Yagha province, over 500 agriculturalists saw their fields flooded; others had their crops washed away, or covered by transported sands.



Floods across Burkina Faso affected over 47,000 persons. Photo: Finnish Red Cross

In certain areas, the floods destroyed fields and homes, causing casualties and damages to the infrastructure. The floods affected a total of 47,671 people over several regions with 33 wounded and 18 people killed. Victims with destroyed homes took temporary shelter in schools or with family members and friends. In parts of the Sahel region, the floods have worsened the vulnerability of both the host and the refugee population.

Some temporary sites are overcrowded with many people under improper sanitary conditions where the overall hygiene is precarious and might cause outbreaks of waterborne diseases, particularly when water stagnates for weeks and people have little to no access to clean drinking water.

In the Sahel region, where the BRCS is already working on the food insecurity operation, discussions have taken place with the local authorities for the Red Cross to support some of the most vulnerable people affected who lack adequate shelter and suffer from general degradation of hygiene and access to drinking water.

Figure 1: Number of persons affected by floods

Province	Department	Number of people
Oudalan	Gorom-Gorom	420
Yagha	Sebba	2,712
	Mansila	712
	Solhan	656
	Tankou	24
	Titabe	68
	Boundore	424
Seno	Falagountou	150
	Gorgadji	80
	Dori	480
Soum	Barboule	344

	Tongomayel	1,538
Total		7,608

Source: CONASUR, Burkina Faso Red Cross Society, September 2012 figures

Many families affected by the floods have been relocated into new collective centres after the schools opened in early October; some of the new collective centres are in extremely precarious sites, deprived of the most basic needs with precarious sanitation unhygienic conditions favourable to disease and epidemic outbreaks. This revised appeal includes the distribution of shelter vouchers to help 100 affected families, in the province of Séno, build or repair damaged homes, including the distribution of basic non-food items, water purification tablets and disinfectants.

Cholera:

In the Sahel region, several cases of cholera appeared since March. As of the end of August, each week has recorded new cases.

In Gorom-Gorom, the capital of the Oudalan province, there have been 40 reported suspect cases with two deaths, most coming from Niger with new cases arriving from the bordering villages. These cases are received by the *Centre de Santé et de Promotion Sociale* (CSPS) the health and social promotion centre of Tokabangou, situated at 5km from the Burkina-Niger border.

The other most affected district is Dori, in the province of Séno, with 96 cases and 8 deaths. These cases arrived from Zargaloutan, a village in the region of Falangoutou also bordering Niger.

Figure 2: Cholera cases in affected districts in the Sahel region

Week		District			Total
		Sebba	Gorom-Gorom	Dori	
Week 14	Cases	6	0	0	6
	Deaths	1	0	0	1
Week 34	Cases	0	16	0	16
	Deaths	0	0	0	0
Week 35 / 36	Cases	0	19	2	21
	Deaths	0	1	0	1
Week 37 / 38	Cases	0	4	0	4
	Deaths	0	1	0	1
Week 39 / 40	Cases	0	1	6	7
	Deaths	0	0	2	2
Week 41 / 42	Cases	0	0	71	71
	Deaths	0	0	2	2
Week 43 / 44	Cases	0	0	17	17
	Deaths	0	0	4	4
Total cases / deaths		142 / 11			

From March to end October, 2012: 142 cholera cases were reported and eleven deaths. Source: Ministry of Health includes the latest figures from the weekly epidemiological situation report.

Coordination and partnerships

The BRCS is a permanent member of the National Council for Emergency Relief and Recovery (CONASUR) a management and coordination institution of the Burkinabe Government. It provides instruction and orientation for the management of crisis in Burkina Faso. CONASUR and the BRCS are decentralized into the country's

45 administrative provinces. BRCS provincial committees are permanent members who attend all meetings organized by government institutions. It is in this role that BRCS gathers information and updates for contingency planning and takes part in regular exchange meetings at the field level where all partners share their activities.

Following the floods, a joint evaluation mission, comprising of government authorities, UN, NGOs and BRCS, took place from 27 September to 2 October 2012. The assessment team visited all the affected regions and identified priority needs for shelter, food and non-food items (described below in the needs section).

BRCS is also a member of the National Committee for the management of epidemics and takes part with other partners in coordination meetings each Wednesday at the Ministry of Health (MoH). These meetings evaluate the response activities. BRCS works in partnership with the Ministry of Health, and attends regular humanitarian coordination meetings with all national and international NGOs, and the UN agencies. BRCS also convenes specific meetings with some of its key partners such as ACF, WFP, FAO, CONAREF, UNHCR, UNICEF, HELP, OXFAM, CRS, OCADES, PLAN and WHO.

In addition, the provincial branches of BRCS take part in regular information exchange meetings in the field at branch level.

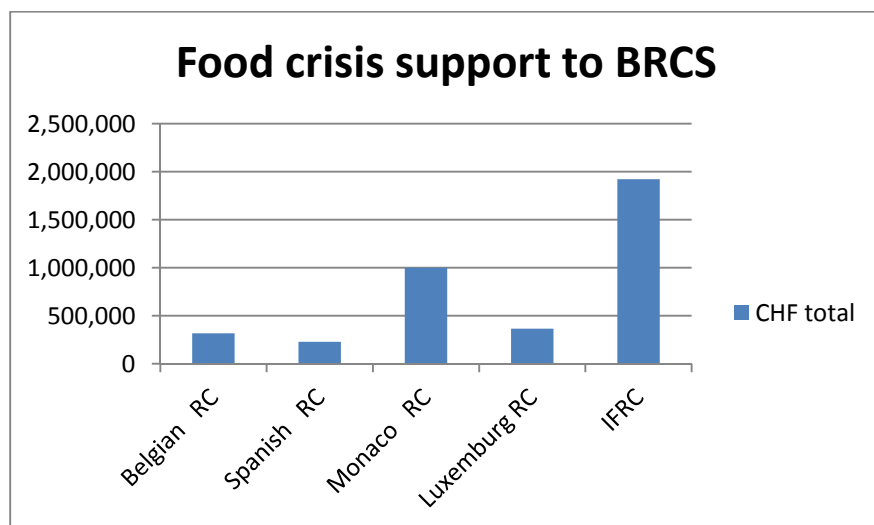
At the national headquarters, BRCS coordinates a weekly Monday morning meeting of all the technical managers and the Movement partners that are based in Burkina Faso. The Partner National Societies (PNS), currently present in the country and operating bilaterally, include Belgian, Luxemburg, Monaco and Spanish Red Cross Societies are responding to the food insecurity (see Table 1).

MSF takes part in these meetings and is experienced with cholera case management and in organizing cholera treatment centres (CTC). BRCS plans and executes its response strategy toward epidemic and cholera prevention activities in close coordination with MSF, WHO and the MoH.

Red Cross and Red Crescent action

BRCS has been involved in three joint assessment missions led by the Food Security Commission (Commission de Sécurité Alimentaire CSA) to assess the 2011 agricultural campaigns and is an active member of the food security working group who meets regularly to analyse the effects of the food security crisis. Since December 2011 when the food insecurity situation and refugee influx crisis started, the BRCS, with support from the Federation, has supported approximately 17,000 families. In addition, BRCS and Catholic Relief Service (CRS) distributed 700 tonnes of food to 86,000 refugees in partnership with WFP.

Table 1 Red Cross Movement actions in response to the food security crisis (*some programmes going over several years*)



National Society	Activity	Zones of intervention
Belgian RC	Nutrition support	Nord, Sahel and Sud Ouest regions
Luxemburg RC	Food security and shelter	Centre Ouest, two communes in Oudalan.
Monaco RC	Food security project	Province of Soum, communes of Arbinda and Koutougou.
Spanish RC	Food security	Two communes in Yagha in the Sahel region.

In December 2011, BRCS initiated assistance to 1,100 households in 17 villages in Tina Akoff, in the province of Oudalan, in the Sahel region through an allocation from the IFRC DREF.

A BRCS regional disaster response team (RDRT) member was deployed in the region to support beneficiary selection process and organise relief activities. Two field assessment coordination team (FACT) members specialised in food security and communications were sent to support the National Society in starting up the emergency operation plans. To date, through the BRCS/IFRC and Monaco Red Cross, over 11,000 agro-pastoralist families have received one-month worth of food vouchers and another 12,500 families (including 1,500 food insecure families hosting the Malian refugees) will be receiving another double ration's worth in the next distribution to take place in the coming weeks. The Red Cross societies from Monaco, Luxemburg, Belgium and Spain, working bilaterally with BRCS, have been actively responding to the food crisis (see above table). More than 240 volunteers and a national disaster response team (NDRT) has been carrying out assessments, identifying beneficiaries and implementing IFRC activities throughout the operation.

In response to cholera, the local committee of the BRCS in the department of Gorom-Gorom (province of Oudalan) mobilized 15 volunteers who have been actively sensitizing the population on cholera, on sharing good hygiene practices and helping cleaning up affected villages.

For the beneficiary identification, NDRT and volunteers were deployed to the regions according to the beneficiary selection strategy and over 240 volunteers received training in voucher and food distribution activities as well as in IEC and sensitization.

The needs

In the initial Emergency Appeal, BRCS identified 20,000 households in six most affected northern regions; the revision now focuses on four regions: Sahel, Centre-Nord, Nord, and Boucle of Mouhoun. The two regions that have been removed are the Centre-Ouest and Est regions.

New immediate needs:

The revised appeal, BRCS now intends to focus on the four regions and assist 17,500 families, including 2,500 new beneficiary families affected by floods, cholera and communities hosting Malian refugees.

The identified needs are:

- 100 most vulnerable families lacking shelter
- insufficient latrines for a population of 695 inhabitants
- lack of drinking water
- lack of non-food items; chlorine or disinfectants for the latrines in schools, at the *Centre de Santé et de Promotion Sociale* (CSPS) and the homes with the identified cases of cholera
- 1,500 families hosting refugees, in addition to the original targeted 11,000 agro-pastoral households, need food support and are (total 12,500 beneficiaries)

A priority focus is on improving access to drinking water, hygiene and sanitation promotion and work on epidemic prevention, whilst supporting food security and the shelter needs.

The activities will focus on:

- distribution of food vouchers to the original targeted food insecure beneficiaries as well as to the additional families hosting refugees (11,000 agro-pastoralists and the 1,500 host families);
- distribution of shelter vouchers, construction support and basic household items to 100 flood-affected families that have lost their homes and does not have the economical and physical ability to rebuild. The shelter voucher covers the costs of cement, iron, wooden planks, basic tools and corrugated iron for the roof.
- water, sanitation and hygiene promotion, epidemic prevention activities that will include the distribution of NFIs to 12,500 beneficiaries inclusive of victims of floods and communities affected by waterborne diseases and cholera.
- work will continue in the originally targeted provinces of Oudalan, Yagha, Séno and Soum, in the Sahel region, under the food plan of action.

The proposed operation

The food insecurity operation is now entering the off-season activities. Despite the fact that food is increasingly accessible in the market, the identified vulnerable beneficiaries continue to require support to increase their resilience. Remaining activities will concentrate on livelihood recovery and protection through the community gardens and training on improved irrigation and cultivation methods including distribution of seeds, fertilizers and tools.

New activities will take place in the same four provinces in the Sahel region to focus on the needs of the affected from flood, cholera and refugee host families:

1. Water, sanitation and hygiene promotion and emergency health activities: hygiene promotion, construction of latrines, distribution of water purification tablets, chlorine, disinfectants, ORS and production of IEC material.
2. Shelter vouchers and construction support in masonry for 100 families, to cover the procurement of construction materials and tools.
3. Purchase and distribution of non-food items: hygiene kits, kitchen sets, mosquito nets, blankets, sleeping mats, blankets, buckets, jerry cans and soap bars.
4. 1,500 host families will benefit from food vouchers.

Revised objectives

The following section presents the revised appeal objectives and details the progress accomplished so far in reaching the related objectives as laid out in the appeal:

Food security / livelihoods - revised	
Outcome 1: 11,000 Food insecure agro-pastoralists households will benefit from food assistance.	
Outputs (expected results)	Activities planned
11,000 households assisted with food through food vouchers.	Completed: <ul style="list-style-type: none"> • Mobilize and deploy NDRT and volunteers for beneficiary selection processes in four regions according to the beneficiary selection strategy • Mobilize / train volunteers for voucher and food distribution activities • Identification and validation of food suppliers. • First distribution of food vouchers with one-month ration to 11,000 in 4 regions (done)
Outcome 2: 12,500 Food insecure agro-pastoralists households and families hosting refugees from Mali will benefit from food assistance, food management and hygiene education.	
Outputs (expected results)	Activities planned
12,500 households receive food assistance through food vouchers (2 months worth of rations) in the department of Tin Akoff in the	<ul style="list-style-type: none"> • Identification and validation of food suppliers. • Distribute two rations of food vouchers to 12,500 (combined distribution of the second and third ration to the originally targeted

province of Oudalan and in the province of Soum	<p>11,000 HH and the new 1,500 HH new host families).</p> <ul style="list-style-type: none"> • Monitor use of food assistance and assure reporting against assistance. • Coordinate information with other partners working in the regions to ensure assistance is evenly distributed without duplication.
Households are educated in food management and food hygiene.	<ul style="list-style-type: none"> • Design appropriate education messages for the target population • Mobilise volunteers to deliver messages on food management and food hygiene to all beneficiaries.
The level of food security, self-sufficiency and resilience of the targeted beneficiaries is assessed after the 2012 harvest, analyzed and addressed through long-term plans and partnerships.	<ul style="list-style-type: none"> • Carry out a food security assessment of the areas of intervention to determine unmet needs, self-sufficiency and resilience among assisted families (through vulnerability capacity assessment (VCA) methodology). • Define longer-term needs and possible partnerships • Develop an exit strategy.
Outcome 3: 5,000 households in the most affected areas in the Sahel region increase their food security resilience through community gardens.	
Outputs (expected results)	Activities planned
5,000 households benefit from improved food and income generating activities through community gardens.	<ul style="list-style-type: none"> • Complete households' selection and train on community gardens management • From the beneficiary households, set-up and train new women-led cooperatives on adapted counter season planting techniques in the community gardens • Set-up a monitoring mechanism and share good practice in community gardening to assure replication • Distribute improved seeds, tools and fertilizers • Rehabilitate water-points for the gardens.

Progress: 11,522 families (76,735 beneficiaries) received food vouchers during the first distribution.

For each of the target provinces, members of the national disaster response team (NDRT) were mobilized. The team members consisted of 10 supervisors, 33 team leaders, 10 social workers and 120 volunteers who supported the process of beneficiary identification in the six originally targeted regions.

The next distribution of combined food rations to the 12,500 identified families, through food vouchers, includes formerly planned second and third distribution. This final distribution is currently in progress. Some 240 volunteers involved in the food voucher distributions in the four target regions (Sahel, Centre-Nord, Nord, and Boucle of Mouhoun) received training on food management and hygiene education. During the distributions, appropriate educational messages on food management and on food hygiene were systematically carried out, which benefitted some 34,500 people. Two assessment missions took place to monitor the quality of food assistance provided during the first food voucher distributions.

BRCS identified food merchants in the 10 provinces and a selection committee validated the process. Agreements were signed between BRCS, the food merchants and the financial institution for payment of the food voucher transactions. All the payments for the first distribution are completed. Agreements are currently being finalised between the food merchants, the financial structures and BRCS for the second and final food voucher distribution due in November (which will combine two rations worth of food to cover two months for 12,500 households).

Since mid-August, BRCS has participated in all food insecurity coordination meetings attended by the different partners and the authorities. The National Society has also taken part in two joint assessment missions:

- From 2nd to 8th September, BRCS took part in a second follow-up food security joint assessment mission following the agro-pastoral campaign led by CONASUR to evaluate the access to food and nutritional levels of households in the targeted food insecure regions. The findings showed some food security forecast improvements with the new harvest soon available on markets, followed by destocking of the reserves, that will contribute to bringing the prices down and allow families with little earnings to access more affordable food. The trend for lower market prices should persist until end of December.

- From 1 to 20 October BRCS took part in a third joint food security assessment mission, with the following recommendation to the technical and financial humanitarian partners:
 - Reinforce the monitoring of food and nutritional access of the population.
 - Develop or pursue activities aimed to build the resilience households most affected by the 2011/2012 food crisis.
 - All the assessment missions and evaluations will feed into a workshop planned between OCHA/IFRC and other partners.



Mother and her young child wait at a nutritional centre. Photo: Finnish Red Cross

A final assessment mission is planned for end December and will collect the data for the 2012 food security and nutritional status in Burkina Faso.

A BRCS team responsible for monitoring and evaluating food security is currently finalizing an evaluation tool to be available in December to monitor the impact of their interventions.

Community garden activities started in November with beneficiary household identification, setting up women led cooperatives, followed by the purchase, distribution of counter season seeds, tools and fertilizers, rehabilitation of water points in gardens and will be ongoing. For the recovery phase starting now, the improved seeds will be procured through the suppliers that are accredited by the local authorities.

Challenges/Gaps: As explained earlier, the vouchers for animal fodder, seeds to farmers and nutritional screening did not take place. The funding meant for these activities will now support the new activities, including seeds during the off-season outlined in the appeal.

Disaster risk reduction (DRR) – revised number of beneficiaries	
Outcome 3: Build the resilience of up to 10,000 agro-pastoralist households to enable them to withstand future food insecurity shocks, through specific DRR activities (in the four regions Sahel, Centre-Nord, Nord, and Boucle of Mouhoun)	
Outputs (expected results)	Activities planned
Enhanced preparedness for food insecurity through increased awareness and analysis of hazard risk and increase volunteer engagement	<ul style="list-style-type: none"> • Establish and strengthen community committees to implement DRR activities. • Undertake awareness sessions on famine early warning systems to support communities understanding what and when to plant, when to de-stock, etc. • Organise refresher training for eight team leaders in VCA with a general briefing on VCA to the volunteers. • NDRT training in early warning systems on food security crisis. • Joint BRCS/OCHA/IFRC workshop including partners, on the food crisis management, lessons learned during the 2011/2012 experiences and longer-term programming. • Conduct awareness raising sessions in villages to promote good nutritional practices (including breastfeeding) and hygiene promotion. • Conduct awareness rising in schools to ensure food safety through information sessions on good nutrition practices and hygiene promotion.
DRR approaches have been incorporated in all emergency activities	<ul style="list-style-type: none"> • Promote better use of water and irrigation systems to improve harvesting and increase impact on food security. • Integrate drought risk reduction and climate change adaptation into development plans and frameworks for further actions.

Progress/Gaps: DRR activities have not started yet but exchanges between the local authorities and the food insecure beneficiary communities have started so that these may begin just after the next food voucher distribution.

OCHA has approached the IFRC / BRCS to discuss organizing a joint workshop early in 2013 with the community leaders, local authorities, the Red Cross branches and other partners to review the humanitarian response to the floods and the food insecurity and capture lessons learned. The outcome of this workshop will feed into the DRR plans for longer-term programming. DRR will be continuing through partnership and as part of the exit strategy.

Emergency health – new

Outcome 4: The spread of cholera and other waterborne diseases is limited in the districts of the affected provinces of the Sahel region.	
Outputs (expected results):	Activities planned:
The population is informed and aware of waterborne disease, epidemics and cholera prevention methods	<ul style="list-style-type: none"> • Mobilization and training of volunteers in the provincial committees for door-to-door sensitization activities on cholera and other waterborne disease and prevention methods • Production of IEC 40 picture boxes, 500 posters, 10,000 pamphlets. • Door to door visits on sensitization with distribution of IEC on prevention measures • Training of 25 provincial supervisors on cholera and prevention measures to fight further cholera cases and on psychological support • Distribute 2,000 mosquito nets and proper net usage materials to 1,000 families

Shelter - new

Outcome: 100 flood-affected households in the Sahel region receive adequate shelter in the province of Séno.	
Outputs (expected results):	Activities planned:
100 households receive shelter material vouchers	<ul style="list-style-type: none"> • Identify 100 vulnerable households unable to build or re-built their homes. • Identification and validation of vendors of shelter material • Identify and re-engage focal person with expertise within BRCS based on the 2009 shelter construction experience • Recruit and train 20 volunteers to monitor and assist in the construction activities • Develop and disseminate IEC material to promote proper construction practices • With the local authorities and BRCS focal persons, identify the level of support of each of the 100 households to issue appropriate shelter vouchers, based on individual needs. • Identify a construction service to assist households in masonry when building or repairing their homes • Monitor and evaluate the construction
Outcome: 1,000 households receive shelter related non-food items	
Outputs (expected results):	Activities planned:
1,000 households receive shelter related non-food items	<ul style="list-style-type: none"> • Mobilisation of 1,000 kitchen sets, 2,000 blankets, 2,000 sleeping mats, distributed for 1,000 families (from the regional warehouse in Dakar) • Local procurement of 1,000 hygiene kits (soap, shampoo, towels, tooth paste, tooth brush, hygienic pads) • Distribution of NFIs.

Water, sanitation, and hygiene promotion - new

Outcome 1: Communities living in insanitary conditions benefit from water, sanitation and hygiene promotion activities to reduce risks of diseases and epidemic transition through safe drinking water and improved hygiene through the distribution of water purification tablets, ORS, chlorine and disinfectants.

Outputs (expected results):	Activities planned:
Reduce the vulnerability of the flood-affected communities through the good practice promotion in the treatment of drinking water, the use of latrines and hygiene	<ul style="list-style-type: none"> • Purchase and distribute 1,000 buckets, and 2,000 jerry cans • Purchase and distribute water purification tablets, soap bars and hand washing basins to 1,000 families • Refresh and train 80 volunteers on water and sanitation, PHAST methodology, home water treatment and hygiene promotion • Organize the cleaning and disinfecting of schools and community latrines.
Improve the access to drinking water in villages by preventing contamination of water points and treating water with chlorine	<ul style="list-style-type: none"> • Chlorination of water points of the villages faced with cholera outbreaks
Affected population have hygiene awareness and improved sanitation conditions with the construction of latrines and promotion of hygiene education	<ul style="list-style-type: none"> • Volunteers will perform 40 door-to-door visits to educate on good hygiene practices: washing of hands, the use of latrines and food hygiene • Construct 25 communal latrines in Gorom-Gorom and Dori • Local procurement and distribution of cleaning material for latrine maintenance • Local procurement and distribution of chlorine to the homes affected by cholera.
Outcome 2: Communities living in at-risk sites have access to drinking water.	
Outputs (expected results)	Activities planned
At least 15,000 households living on sites where there are drinking water problems will receive support	<ul style="list-style-type: none"> • Select the beneficiary villages • Sensitize the host communities • Distribute water purification tablets • Follow up on their use and monitor the water quality.

Logistics

For standard non-food items, a mobilization table is being launched which consolidates supply needs for the appeal. The IFRC procurement rules are adhered to and the non-food items, when required, will be purchased through the Global Logistics System and regional warehouses. BRCS will be responsible for any local commodity for food and non-food item procurement. The procurement of improved seeds is aligned under the authorities' recommendations. The tools and fertilizer are procured according to IFRC recommendations and guidelines. BRCS selects the food suppliers, which are validated by a committee that include community leaders, the social action authorities, the local authorities and the BRCS branch and the beneficiaries.

Three warehouses are available in Ouagadougou and Djibo regions. These warehouses will store food and non-food items until called forward for distribution. All NFIs ordered and shipped from the regional warehouse in Dakar will be delivered to the three warehouses in Burkina Faso for onward distribution.

The BRCS truck used for distributions will be maintained and all repairs paid by the operation. Operational needs also require the purchase of two HF Codan radios and six GPS. To improve logistics management, two BRCS logisticians are to be trained in Dakar.

Security

The security situation in Burkina Faso is relatively stable. The main risk to personnel is petty crime, which is most likely to occur in urban areas, especially in the capital, Ouagadougou. The long-standing Compaoré Government provides the country with reasonable political stability. Demonstrations, usually held due to social discontent, tend to be non-violent, as do the government's responses, although this is not always the case. Highway robbery is a risk, particularly near the country's borders in all directions. This is especially the case in the east on roads leading to Bogande and to the Benin border, and in the south on the route from Ouagadougou to Pô near Ghana. Areas adjoining the Ivorian border to the south-west are heavily militarised and caution is required if travelling in this region. The northern border with Mali (Sahel Region) is a high-risk zone. The threat of militancy is not

significant in Burkina Faso. Likewise, the threat of kidnapping is low, although this risk increases significantly in the northeast border areas shared with Mali and Niger.

Communications

BRCS will lead a national communication strategy to convey its activities to the public. Press conferences, interviews and media coverage through radio will be organized to ensure BRCS visibility. The media successfully publicized the DREF activities in Tin Akoff.

A regional communication plan is in use by communications staff from the BRCS, IFRC Sahel Regional Office, the Africa Zone Office and Geneva. The communications team will raise awareness of the issues relating to the food crisis and profile the Movement's response to humanitarian needs with both local and international audiences. Plans are discussed for field visits, to gather photos and/or video and interviews with beneficiaries, as well as RCRC personnel. Communication initiatives will also help to build the information and public relations capacity of the BRCS for future emergencies.

Communications will support the objectives of this appeal by helping raise the profile and funds for BRCS and IFRC. It will also highlight and advocate the needs of people affected by the current crisis who live with chronic ongoing food insecurity:

- emergency response activities to be embedded in long-term food security programmes
- increasing co-ordination and partnerships with aid agencies and governments in order to develop more integrated food security programmes, which include : education so people can make better decisions about their livelihoods; developing more diverse livelihood opportunities so people are no longer reliant on rain-fed agriculture; investment in irrigation, farming technology and training in better farming techniques; investment in infrastructure.

Capacity of the National Society

BRCS is an independent organization, auxiliary to the national authorities and recognized in its humanitarian role since 1962 by the government and the ICRC, and is a member of the IFRC since 1963. It has regional representation in all 45 provinces in the country. Partnership with the Movement members includes ICRC, IFRC, Andorran, Belgian, Luxemburg, Monaco and Spanish Red Cross Societies who provide the National Society with over 90 per cent of its funding sources. It also has partnerships with government line ministries (social welfare, health, civil protection, fire brigades, defence, security and the National Committee for Disaster Response (CONASUR), the embassies of France, Germany and Japan, the main UN and NGO international humanitarian actors.

BRCS has approximately 2,500 volunteers in all 13 regions in the country trained in search and rescue activities and disaster response. Furthermore, BRCS is able to mobilize additional volunteers when implementation of programmes requires scaling up.

BRCS has experience in dealing with refugees' crisis from Cote d'Ivoire in 2002-2004 and again in 2011, as well as responding to floods in 2009 in Ouagadougou. These responses included the implementation of voucher programmes in partnership with WFP. In addition, since 2006, BRCS has been involved in activities related to health care and epidemic control.

BRCS implemented a similar food security project with the support from the Andorran Red Cross in the northern province of Soum, bordering Mali. This project involved cereal banks and market gardening activities to promote food security over the lean season. This project ended in December 2011, at a time when the food insecurity crisis was evolving.

Capacity of the IFRC

To support the emergency operation, an IFRC operations manager is working alongside BRCS to provide support in planning, implementation, monitoring, evaluation and reporting of the food insecurity situation and in the new emergency response activities focused on recent floods, assistance to communities hosting refugees and on prevention measure to prevent the spread of waterborne disease and cholera.

The IFRC developed a surge and response strategy for all of the seven affected countries in the Sahel. This will contribute to lessons learnt throughout and at the end of the operation.

Both the BRCS and the Sahel Regional Office will continue to receive additional technical support from the IFRC Africa Zone and the secretariat in Geneva. Technical capacities available include disaster management, health and care, water and sanitation, finance and administration, reporting and communications as well as resource mobilization and planning, monitoring, evaluation and reporting (PMER).

Walter Cotte
Under Secretary General
Programme Services Division

Bekele Geleta
Secretary General

Contact information

For further information specifically related to this operation, please contact:

- **Burkinabe Red Cross Society:** Lazare Zoungrana, National Director, phone.+226 50 361 340; email: zwendlaze@yahoo.fr
- **IFRC Regional Representation:** Momodou Lamin Fye, Regional Representative; phone: +221 33 869 36 41; Email: momodoulamin.fye@ifrc.org
- **IFRC DMU:** Daniel Bolaños, Disaster Management Coordinator, Africa; phone: +254 731 067 489; email: daniel.bolanos@ifrc.org
- **IFRC Geneva:** Christine South, Operations Quality Assurance Senior Officer; phone: +41.22.730.45 29; email: christine.south@ifrc.org
- **IFRC Logistics:** Rishi Ramrakha, Head of Zone Logistics Unit, Nairobi; phone +254 731 067 489; email: rishi.ramrakha@ifrc.org

For Resource Mobilization and Pledges:

- **IFRC RM:** Loïc de Bastier, Resource Mobilisation Coordinator, Addis Ababa; Tel: +251 93 003 4013; Email: loic.debastier@ifrc.org

For Performance and Accountability (planning, monitoring, evaluation and reporting)

- **IFRC Africa Zone PMER:** Robert Ondrusek, PMER / QA Delegate; Tel: +254 731 067 277; Email: robert.ondrusek@ifrc.org

How we work

All IFRC assistance seeks to adhere to the Code of Conduct for the International Red Cross and Red Crescent Movement and Non-Governmental Organizations (NGOs) in Disaster Relief and the Humanitarian Charter and Minimum Standards in Humanitarian Response (Sphere) in delivering assistance to the most vulnerable.

The IFRC's vision is to inspire, encourage, facilitate and promote at all times all forms of humanitarian activities by National Societies, with a view to preventing and alleviating human suffering, and thereby contributing to the maintenance and promotion of human dignity and peace in the world.

www.ifrc.org
Saving lives, changing minds.



The IFRC's work is guided by Strategy 2020, which puts forward three strategic aims:

1. Save lives, protect livelihoods, and strengthen recovery from disaster and crises.
2. Enable healthy and safe living.
3. Promote social inclusion and a culture of non-violence and peace.

Burkina Faso Complex Emergency: Emergency Appeal

5.12.12

MDRBF011

Budget Group	Multilateral Response	Inter-Agency Shelter Coord.	Bilateral Response	Appeal Budget CHF
Shelter - Relief	16,000			16,000
Construction - Housing	37,037			37,037
Construction - Materials	10,000			10,000
Food	694,444			694,444
Water, Sanitation & Hygiene	27,741			27,741
Medical & First Aid	11,478			11,478
Teaching Materials	40,741			40,741
Ustensils & Tools	34,700			34,700
Other Supplies & Services	466,963			466,963
Total RELIEF ITEMS, CONSTRUCTION AND SUPPLIES	1,339,104	0	0	1,339,104
Vehicles Purchase	2,222			2,222
Computer & Telecom Equipment	24,437			24,437
Total LAND, VEHICLES AND EQUIPMENT	26,659	0	0	26,659
Storage, Warehousing	5,556			5,556
Distribution & Monitoring	10,954			10,954
Transport & Vehicle Costs	68,119			68,119
Logistics Services	3,094			3,094
Total LOGISTICS, TRANSPORT AND STORAGE	87,722	0	0	87,722
International Staff	144,352			144,352
National Society Staff	55,556			55,556
Volunteers	197,000			197,000
Total PERSONNEL	396,907	0	0	396,907
Workshops & Training	46,574			46,574
Total WORKSHOP & TRAINING	46,574	0	0	46,574
Travel	37,222			37,222
Information & Public Relations	2,778			2,778
Office Costs	12,056			12,056
Communications	5,000			5,000
Financial Charges	12,000			12,000
Total GENERAL EXPENDITURES	69,055	0	0	69,055
Programme and Supplementary Services Recovery	127,590			127,590
Total INDIRECT COSTS	127,590	0	0	127,590
TOTAL BUDGET	2,093,612	0	0	2,093,612
Available Resources				
Multilateral Contributions	1,841,135			1,841,135
Bilateral Contributions				0
TOTAL AVAILABLE RESOURCES	1,841,135	0	0	1,841,135
NET EMERGENCY APPEAL NEEDS	252,477	0	0	252,477

MDRBF011 - Burkina Faso - Food Insecurity

Appeal Launch Date: 16 apr 12

Appeal Timeframe: 16 dec 11 to 16 mar 13

Interim Report

Selected Parameters	
Reporting Timeframe	2011/12-2012/10
Budget Timeframe	2011/12-2013/3
Appeal	MDRBF011
Budget	APPROVED

All figures are in Swiss Francs (CHF)

I. Funding

	Disaster Management	Health and Social Services	National Society Development	Principles and Values	Coordination	TOTAL	Deferred Income
A. Budget	3,952,739					3,952,739	
B. Opening Balance	0					0	
Income							
Cash contributions							
<i>British Red Cross</i>	148,483					148,483	
<i>Finnish Red Cross</i>	651,281					651,281	
<i>Japanese Red Cross Society</i>	130,400					130,400	
<i>Red Cross of Monaco</i>	18,018					18,018	
<i>The Canadian Red Cross Society</i>	-0					-0	234,236
<i>The Netherlands Red Cross</i>	661,525					661,525	
C1. Cash contributions	1,609,707					1,609,707	234,236
C. Total Income = SUM(C1..C4)	1,609,707					1,609,707	234,236
D. Total Funding = B + C	1,609,707					1,609,707	234,236
Coverage = D/A	41%					41%	

II. Movement of Funds

	Disaster Management	Health and Social Services	National Society Development	Principles and Values	Coordination	TOTAL	Deferred Income
B. Opening Balance	0					0	
C. Income	1,609,707					1,609,707	234,236
E. Expenditure	-664,476					-664,476	
F. Closing Balance = (B + C + E)	945,231					945,231	234,236

Selected Parameters	
Reporting Timeframe	2011/12-2012/10
Budget Timeframe	2011/12-2013/3
Appeal	MDRBF011
Budget	APPROVED

All figures are in Swiss Francs (CHF)

III. Expenditure

Account Groups	Budget	Expenditure					TOTAL	Variance
		Disaster Management	Health and Social Services	National Society Development	Principles and Values	Coordination		
A							B	A - B
BUDGET (C)		3,952,739					3,952,739	
Relief items, Construction, Supplies								
Seeds & Plants	454,670						454,670	
Water, Sanitation & Hygiene	20,400						20,400	
Teaching Materials	2,500						2,500	
Cash Disbursement	2,555,250	230,401				230,401	2,324,849	
Total Relief items, Construction, Supplies	3,032,820	230,401				230,401	2,802,419	
Land, vehicles & equipment								
Vehicles	2,400						2,400	
Computers & Telecom	33,415	34,897				34,897	-1,482	
Total Land, vehicles & equipment	35,815	34,897				34,897	918	
Logistics, Transport & Storage								
Storage	33,100	1,851				1,851	31,249	
Distribution & Monitoring	50,165	4,894				4,894	45,271	
Transport & Vehicles Costs	85,950	17,411				17,411	68,539	
Logistics Services		230				230	-230	
Total Logistics, Transport & Storage	169,215	24,385				24,385	144,830	
Personnel								
International Staff	114,350	35,259				35,259	79,091	
National Staff		1,005				1,005	-1,005	
National Society Staff	114,200	21,057				21,057	93,143	
Volunteers	137,868	771				771	137,097	
Total Personnel	366,418	58,093				58,093	308,325	
Consultants & Professional Fees								
Consultants	5,000	1,998				1,998	3,002	
Total Consultants & Professional Fees	5,000	1,998				1,998	3,002	
Workshops & Training								
Workshops & Training		35				35	-35	
Total Workshops & Training		35				35	-35	
General Expenditure								
Travel	36,000	24,523				24,523	11,477	
Information & Public Relations	21,600	5,879				5,879	15,721	
Office Costs	29,824	865				865	28,959	
Communications	10,800	2,345				2,345	8,455	
Financial Charges	4,000	9,230				9,230	-5,230	
Other General Expenses		4				4	-4	
Shared Office and Services Costs		120				120	-120	
Total General Expenditure	102,224	42,966				42,966	59,258	
Operational Provisions								
Operational Provisions		228,127				228,127	-228,127	
Total Operational Provisions		228,127				228,127	-228,127	
Indirect Costs								
Programme & Services Support Recov	241,247	40,359				40,359	200,888	
Total Indirect Costs	241,247	40,359				40,359	200,888	
Pledge Specific Costs								
Pledge Earmarking Fee		2,515				2,515	-2,515	
Pledge Reporting Fees		700				700	-700	
Total Pledge Specific Costs		3,215				3,215	-3,215	
TOTAL EXPENDITURE (D)	3,952,739	664,476				664,476	3,288,263	

MDRBF011 - Burkina Faso - Food Insecurity

Appeal Launch Date: 16 apr 12

Appeal Timeframe: 16 dec 11 to 16 mar 13

Interim Report

Selected Parameters	
Reporting Timeframe	2011/12-2012/10
Budget Timeframe	2011/12-2013/3
Appeal	MDRBF011
Budget	APPROVED

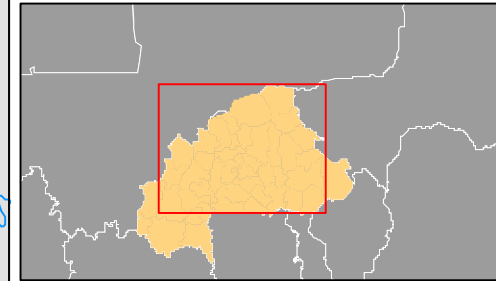
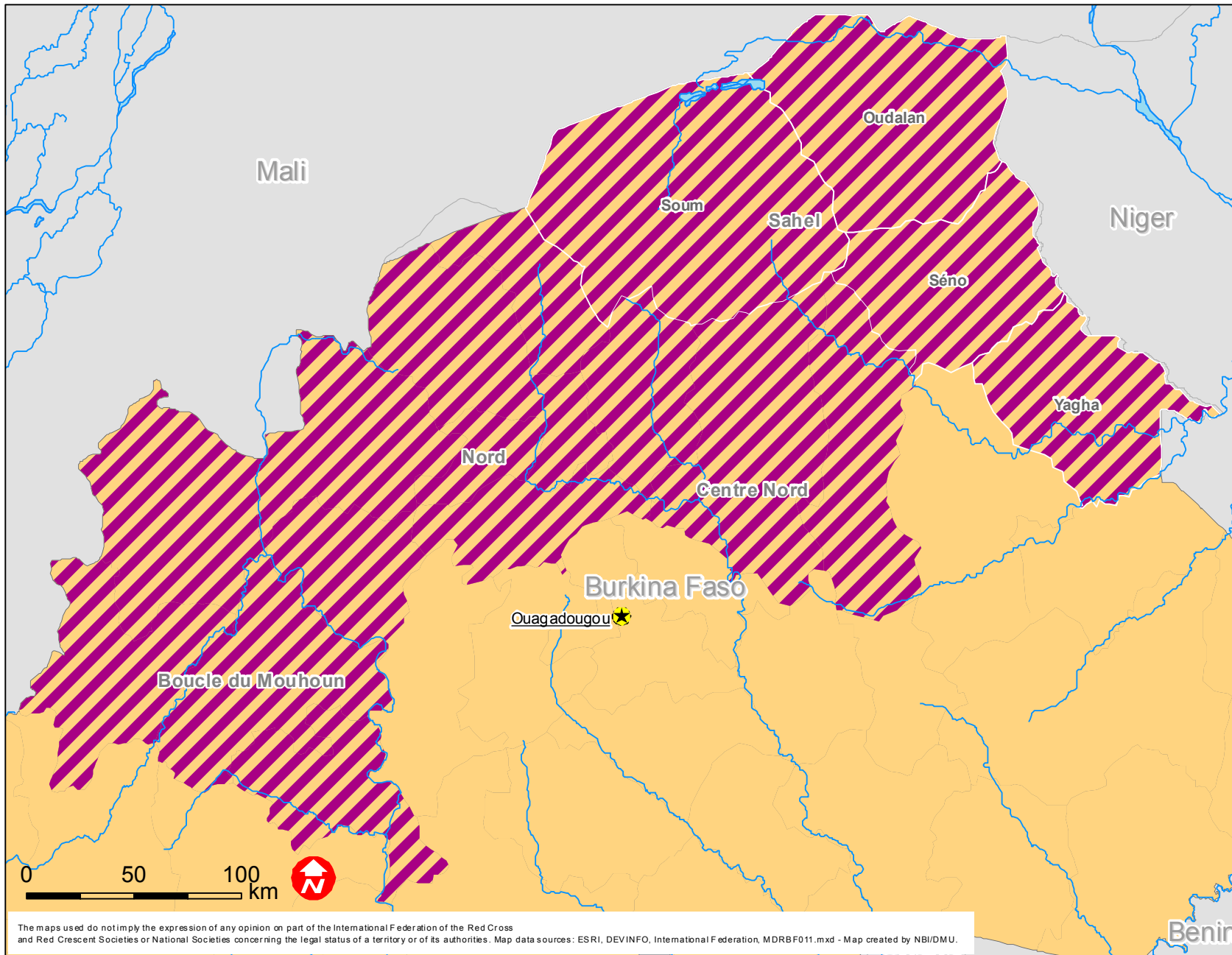
All figures are in Swiss Francs (CHF)

III. Expenditure

Account Groups	Budget	Expenditure						TOTAL	Variance
		Disaster Management	Health and Social Services	National Society Development	Principles and Values	Coordination			
	A						B	A - B	
BUDGET (C)		3,952,739					3,952,739		
VARIANCE (C - D)		3,288,263					3,288,263		



Burkina Faso: Complex Emergency



 Targeted Areas