

www.ifrc.org  
Saving lives,  
changing minds.

# Disaster relief emergency fund (DREF) Burkina Faso: Population Movement

 International Federation  
of Red Cross and Red Crescent Societies

**DREF operation n° MDRBF012**  
**GLIDE n° OT-2012-000029-BFA**  
**6 March, 2012**

The International Federation of Red Cross and Red Crescent (IFRC) Disaster Relief Emergency Fund (DREF) is a source of un-earmarked money created by the Federation in 1985 to ensure that immediate financial support is available for Red Cross and Red Crescent emergency response. The DREF is a vital part of the International Federation's disaster response system and increases the ability of National Societies to respond to disasters.

**CHF 120,557 has been allocated from the IFRC's Disaster Relief Emergency Fund (DREF) to support the Burkinabe Red Cross Society (BRCS) in delivering immediate assistance to some 600 families. Unearmarked funds to repay DREF are encouraged.**

**Summary:** In mid-January 2012, the National Movement for the Liberation of Azwad (MNL) carried out attacks against the Malian Army positions in Northern cities of Aguelhoc and Menaka and most recently in the city of Nianfunke, north-west of Mali. The Regular Malian Army repulsed the attacks and this developed into humanitarian crises that caused the displacement of thousands of civilians in Mali and neighbouring countries including Burkina Faso.



Refugees living in makeshift shelters/ photo IFRC

Burkina is known to have hosted a large population of Tuaregs in the past and they are now found in various locations throughout the country.

As of end February, it is thought that approximately 20,000 refugees have arrived in Burkina. However, this number changes day by day. A total of 14,432 people are thought to be in Ouadalan Province as of end-February, and more than 4,270 others in the province of Soum, in Mentao, Damba and Soum bela areas. Another 857 refugees are also regrouped in one site in the capital Ouagadougou and many others are in town or living with host families. Furthermore a total of 1,060 refugees are hosted in and around the city of Bobo. The current state of uncertainty and the evolving situation makes their return unlikely in the near future.

The current DREF operation will permit BRCS to respond to the most salient needs of 600 most vulnerable families in the provinces of Ouadalan and Soum, through distribution of essential non-food items, conducting of health awareness raising/sensitization, providing water, sanitation and hygiene promotion and providing emergency shelter (with UNHCR).

This operation is expected to be implemented over 04 months, and will therefore be completed by July, 2012; a Final Report will be made available three months after the end of the operation (by October, 2012).

[<click here for the DREF budget; here for contact details; here to view a map of the affected area>](#)

## The situation

Since early January 2012, the National Movement for the Liberation of Azwad (MNLA) and other Tuareg rebels in Northern Mali launched an offensive against the Armed Forces of Mali which led to thousands of Malians to seek refuge in neighbouring countries of Burkina Faso, Mauritania and Niger.

The conflict, which forced many people to leave Northern Mali, has further weakened the region that has been facing the risk of food insecurity. The situation has plunged the people into destitution and deprivation which exposes them to all kinds of risks, including diseases, the spread of which is facilitated by poor hygiene and sanitation conditions.

The number of refugees now stands at around 20,000. A total of 14,432 people are thought to be in Ouadalan Province as of end-February, and more than 4,270 others in the province of Soum, in Mentao, Damba and Soum bela areas. Another 857 refugees are also regrouped in one site in the capital Ouagadougou and many others are in town or living with host families. Additionally, a total of 1,060 refugees are hosted in and around Bobo.

The population is composed of people from all walks of life with diverse livelihoods now either lost or simply left behind. They live in small family and kinship clusters of mostly women and children. There are families staying with host communities while others are on their own. A rapid assessment conducted in some of the locations revealed that there are new arrivals on a daily basis: 2,616 in Inabao; 1,539 in Gadanfabou; and 8,142 in Soum and Oudalan.

## Coordination and partnerships

The government of Burkina Faso through its National Commission for Refugees (CONAREF) is responsible for the coordination of all key stakeholders through regular coordination meetings in this massive arrival of refugees from Mali. The National Council for Emergency Relief and Rehabilitation (CONASUR), Department of Administration, Security and Decentralisation, the Burkinabe Red Cross, the UN system (UNHCR, WFP, OCHA, WHO), EU, NGOs and CBOs are part of the coordination matrix. The first coordination meeting was held on 7 February, 2012. A draft contingency plan developed by humanitarian actors, with a planning assumption of 25,000 refugees is being reviewed to reflect the ongoing mass influx of Malians to Burkina Faso through numerous entry points. Continued coordination with UNHCR helps ensure that all refugees are registered and provided assistance as needed.

## Red Cross and Red Crescent action

The Burkinabe Red Cross Society has been active in implementing a food insecurity response supported through a DREF operation since the end of December, 2012 which facilitated its presence in the provinces of Oudalan and Soum. The National Society volunteers have carried out rapid assessment. They are monitoring the evolving situation and participate in relief distribution of food and non-food items provided by UNICEF and WFP. As of 29 February 2012, the ICRC provided 2,000 First Aid kits to the National Society in assistance to 2,000 households. ICRC also monitors the food insecurity situation. The current population movement is expected to have an effect on the food insecurity situation as refugees are staying in the areas affected by the current food crisis.

## The needs

**Shelter:** A significant number of refugees fled their homes without their basic survival materials. Those who have such materials are using mats and blankets to erect temporary shelters. The National Society is supporting others with temporary shelters or tents, and has proposed to support the government with camp settlement (planning, layout) and shelters for the most vulnerable families who cannot build their own shelter, with the assistance of Red Cross volunteers.

**Water:** The communities hosting refugees have water supply but there is an impending challenge where the three wells serving about 1,000 people have over 2,000 refugees added in the community. Besides, some refugees have reached Burkina Faso with their cattle, putting additional pressure on water resources. Instead of rehabilitating wells, the Burkinabe Red Cross Society has planned to install temporary latrines which can be uninstalled, disinfected and used later on. A total of 100 temporary latrines from the 2009 floods operation are available.

**Food:** The normal social solidarity has helped matters but existing stocks are being depleted as most of the refugees left their source of livelihood (livestock) behind as the prices spiral downwards for lack of fodder for

the cattle. Children are becoming malnourished in the absence of milk from cows left behind and the ongoing food insecurity in the Sahel Region is a big concern. The local population has been sharing their food with the refugees and this situation has constituted a strong pressure on food stocks.

**Health and Care:** The deteriorating condition of the refugees due to exposure to the harsh climate has manifested in cases of acute respiratory infection (ARI) and other ailments especially among the elderly people and children.

**Education:** Many children dropped out of school while fleeing to safety with their parents.

## The proposed operation

The National Society is set to intervene by addressing the basic needs of 600 families selected through the following criteria: households headed by the elderly, female-headed households, households that have arrived in Burkina with nothing, families with children, pregnant or lactating mothers as well as sick persons and people with physical handicaps. Beneficiary selection will be based on field visits in conjunction with management committees already in place. The following activities have been planned by Burkinabe Red Cross Society and a regional disaster response team (RDRT) will be sent for support.

- Distribution of NFIs to 600 families;
- Conducting of health awareness raising/sensitization for 600 families for 3 months;
- Providing water, sanitation and hygiene promotion to 600 families for 3 months;
- Providing emergency shelter to 600 families with the support of UNHCR.

Emergency Shelter and Non-Food-Items	
<b>Outcome: 600 displaced families are provided with emergency assistance for a period of one month.</b>	
Outputs	Planned activities
600 households are provided with mats, blankets, kettles, hygiene kits and kitchen sets	<ul style="list-style-type: none"> <li>• Develop a strategy for targeting, identification and registration of beneficiaries;</li> <li>• Distribute kits;</li> <li>• Conduct Monitoring and Evaluation activities;</li> <li>• Report on relief distribution;</li> <li>• Ensure replacement of kits.</li> </ul>
600 at risk households are assisted by Red Cross volunteers in completion of emergency shelters.	<ul style="list-style-type: none"> <li>• Identify households at risk;</li> <li>• Carry out space planning with targeted households;</li> <li>• Support at risk households in the erection of emergency shelters;</li> <li>• Monitor and evaluate activities carried out.</li> </ul>

Emergency health	
<b>Objective: Reduce the immediate health risk of 3,000 people (600 households) by providing community health services during 3 months in the provinces of Oudalan and Soum.</b>	
Outputs	Activities planned
3,000 people (600 households) are targeted in disease prevention and health promotion activities at district level.	<ul style="list-style-type: none"> <li>• Participate in coordination meetings;</li> <li>• Conduct orientation sessions for volunteers on Epidemic control for volunteers (ECV);</li> <li>• Train volunteers in community-based health activities;</li> <li>• Conduct sensitization on health preventive measures for refugees including malaria prevention activities;</li> <li>• Report activities of Red Cross volunteers.</li> </ul>

## Water, sanitation, and hygiene promotion

**Outcome: The risk of waterborne diseases is reduced thanks to the supply of drinkable water, drainage and hygiene promotion for 3,000 beneficiaries (refugees, host communities) during 3 months.**

<b>Outputs</b>	<b>Activities planned</b>
Hygiene promotion, as well as community sensitization improve knowledge and practice to limit the spread of disease.	<ul style="list-style-type: none"><li>• Conduct training for Red Cross volunteers on hygiene promotion and sanitation;</li><li>• Provide drinking water, hygiene and sanitation promotion for 400 families in two locations Oudalan and Soum;</li><li>• Monitor activities of volunteers and refugee population in Oudalan and Soum.</li></ul>

### **Communications:**

Public communication of the Red Cross response to the refugee influx will increase the profile of the National Society concerning this operation as well as its broader response to the drought and long term food security programmes. Interest is increasing in a media tour of journalists from various newspapers and TV station to be arranged to showcase the work being done.

---

## Contact information

### For further information specifically related to this operation please contact:

- **IFRC Regional Representation:** Momodou Lamin Fye, Regional Representative ,Dakar phone:(Office) +221.33.869.36.41; (Mobile) +221.77.332.56.72; email: [momodoulamin.fye@ifrc.org](mailto:momodoulamin.fye@ifrc.org)
- **In Geneva:** Christine South, Operations Support; phone: +41.22.730.45 29; email: [christine.south@ifrc.org](mailto:christine.south@ifrc.org)
- **Regional Logistics Unit (RLU):** Ari Mantyvaara Logistics Coordinator, Dubai; phone +971 50 4584872, Fax +971.4.883.22.12, email: [ari.mantyvaara@ifrc.org](mailto:ari.mantyvaara@ifrc.org)

### For Resource Mobilization and Pledges:

- **West and Central Africa hub:** Elisabeth Seck, Resource Mobilization Officer, Dakar; phone: +221 33 869 36 60; mobile: +221 77 450 59 49; email: [elisabeth.seck@ifrc.org](mailto:elisabeth.seck@ifrc.org)
- **East Africa hub:** Douglas Masika, Senior Resource Mobilization Officer; phone: +254 20 283 5000; email:[douglas.masika@ifrc.org](mailto:douglas.masika@ifrc.org).

### For Performance and Accountability (planning, monitoring, evaluation and reporting):

- **IFRC Zone:** Robert Ondrusek, PMER/QA Delegate, Africa phone: +254 731 067277; email: [robert.ondrusek@ifrc.org](mailto:robert.ondrusek@ifrc.org)

---

## How we work

All IFRC assistance seeks to adhere to the Code of Conduct for the International Red Cross and Red Crescent Movement and Non-Governmental Organizations (NGOs) in Disaster Relief and the Humanitarian Charter and Minimum Standards in Disaster Response (Sphere) in delivering assistance to the most vulnerable.

The IFRC's vision is to inspire, encourage, facilitate and promote at all times all forms of humanitarian activities by National Societies, with a view to preventing and alleviating human suffering, and thereby contributing to the maintenance and promotion of human dignity and peace in the world.

[www.ifrc.org](http://www.ifrc.org)

**Saving lives, changing minds.**



The IFRC's work is guided by Strategy 2020 which puts forward three strategic aims:

1. Save lives, protect livelihoods, and strengthen recovery from disaster and crises.
2. Enable healthy and safe living.
3. Promote social inclusion and a culture of non-violence and peace.

# DREF OPERATION

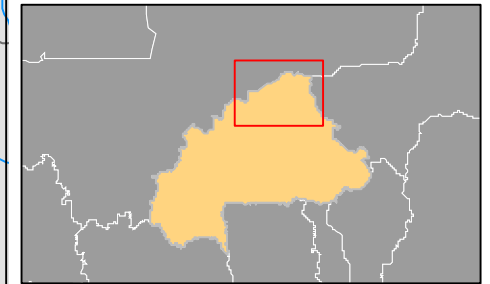
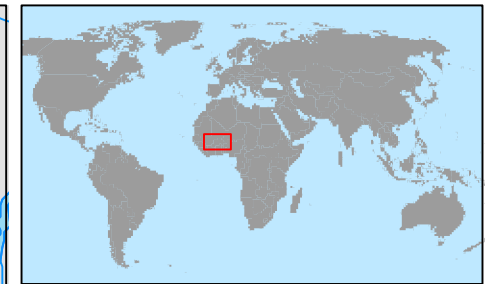
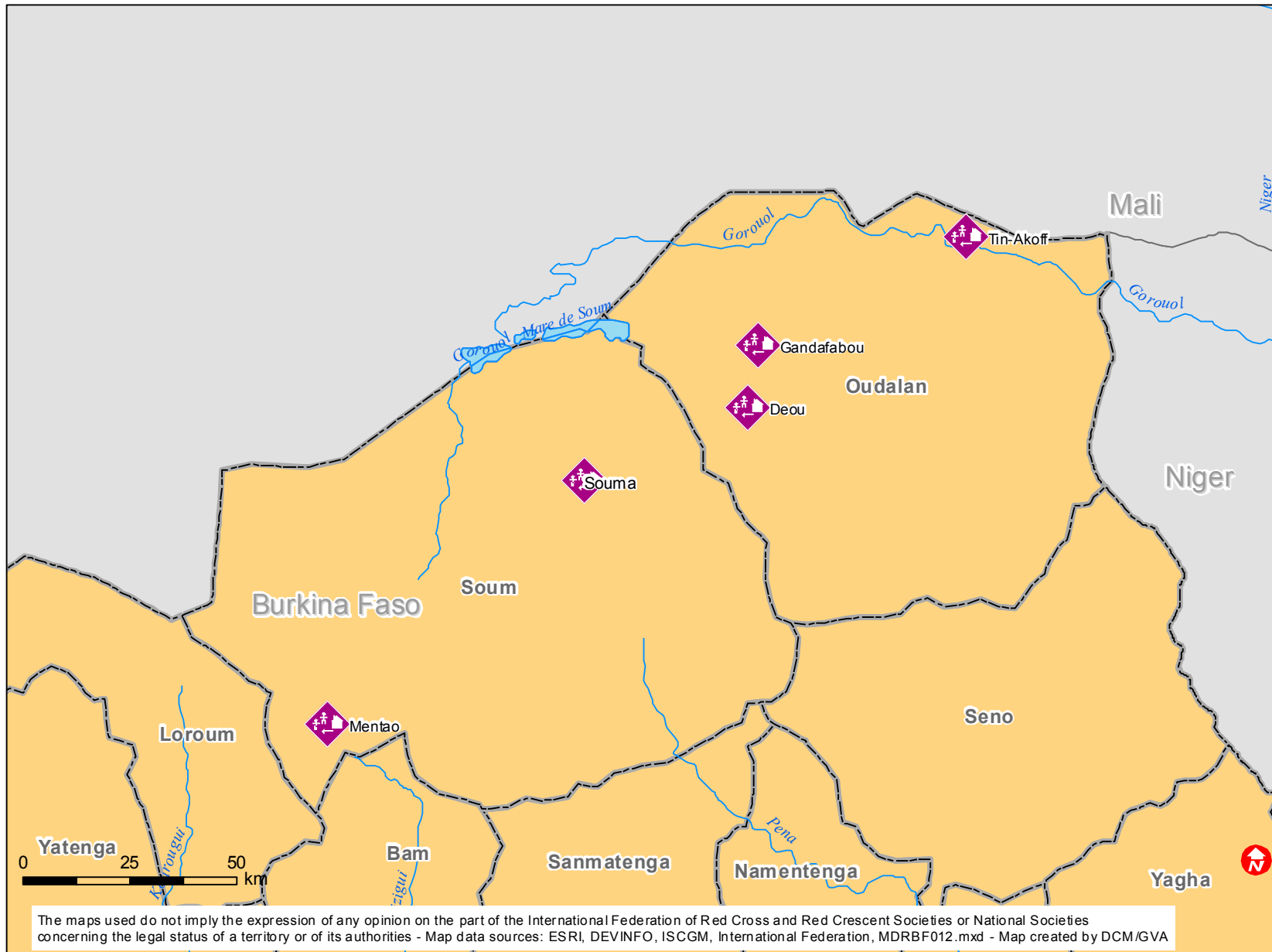
06-03-12


Burkina Faso: Population Movement (MDRBF012)

<b>Budget Group</b>	<b>DREF Grant Budget CHF</b>
Shelter - Relief	4,168
Shelter - Transitional	
Construction - Housing	
Construction - Facilities	
Construction - Materials	
Clothing & Textiles	30,000
Food	
Seeds & Plants	
Water, Sanitation & Hygiene	3,220
Medical & First Aid	
Teaching Materials	1,088
Utensils & Tools	19,500
Other Supplies & Services	26,544
Emergency Response Units	
Cash Disbursements	
<b>Total RELIEF ITEMS, CONSTRUCTION AND SUPPLIES</b>	<b>84,520</b>
Land & Buildings	
Vehicles Purchase	
Computer & Telecom Equipment	
Office/Household Furniture & Equipment	
Medical Equipment	
Other Machinery & Equipment	
<b>Total LAND, VEHICLES AND EQUIPMENT</b>	<b>0</b>
Storage, Warehousing	
Distribution & Monitoring	500
Transport & Vehicle Costs	1,942
Logistics Services	
<b>Total LOGISTICS, TRANSPORT AND STORAGE</b>	<b>2,442</b>
International Staff	
Regionally Deployed Staff	12,680
National Staff	
National Society Staff	
Volunteers	6,658
<b>Total PERSONNEL</b>	<b>19,338</b>
Consultants	
Professional Fees	
<b>Total CONSULTANTS &amp; PROFESSIONAL FEES</b>	<b>0</b>
Workshops & Training	2,400
<b>Total WORKSHOP &amp; TRAINING</b>	<b>2,400</b>
Travel	1,500
Information & Public Relations	1,000
Office Costs	0
Communications	1,000
Financial Charges	1,000
Other General Expenses	
Shared Support Services	
<b>Total GENERAL EXPENDITURES</b>	<b>4,500</b>
Programme and Supplementary Services Recovery	7,358
<b>Total INDIRECT COSTS</b>	<b>7,358</b>
<b>TOTAL BUDGET</b>	<b>120,557</b>



# Burkina Faso: Population movements



 Municipalities with refugees