


www.ifrc.org
Saving lives,
changing minds.

Emergency appeal

Burundi: Population Movement

 International Federation
of Red Cross and Red Crescent Societies

Emergency appeal n° MDRBI008 GLIDE n° OT-2012-000193-TZA 24 January, 2013

This Emergency Appeal seeks CHF 717,077 in cash, kind or services to support the Burundi Red Cross (BRC) to assist 20,194 beneficiaries (3,366 households) for 12 months, and will be completed by the end of January, 2014. A Final Report will be made available by end of April 2014 (three months after the end of the operation). During the operation timeframe the situation will be monitored for any developing needs that might warrant extended support beyond January 2014.



Burundi RC staff and volunteers welcome returnees to Burundi. Photo/Burundi RC

Appeal history:

- A [Preliminary Emergency Appeal](#) was launched on 15 November 2012 with a budget of CHF 674,731 (cash and in kind donation or services) to assist 14,643 beneficiaries (2,615 households) for a period of three months.
- CHF 100,000 was initially allocated from the IFRC's Disaster Relief Emergency Fund (DREF) on 15 November, 2012 to help in starting up operations as returnees streamed into Burundi from Tanzania's Mtabila camp.
- Based on available funds, the needs of the population and in coordination with Burundi Red Cross (BRC) and other actors, this Emergency Appeal now seeks to provide more sustained support to an increased number of beneficiaries.

Summary:

During the past decade over 525,000 Burundians have voluntarily returned home, while more than 94,000 Burundians still remain as refugees in neighboring countries, including in Tanzania. In 2011, the Tanzanian Government informed its partners that it would close Mtabila camp by the end of 2012 and repatriate all the Burundian refugees living in the camp and on 1 August, 2012, the Government of Tanzania revoked the refugee status for the majority of the Burundian refugees living in Mtabila camp.

As of 11 December, 2012 a total of 33,819 refugees from Mtabila camp were repatriated into Burundi and have since been resettled in different provinces in the country. However a few remain in a temporary transit camp inside Burundi as they await availability of land and re-establishment of their family links. According to the Government of Tanzania, beginning 1 January, 2013 any former Burundian Refugee found in or outside the Mtabila camp would be classified as an illegal migrant and will therefore be subjected to the Tanzanian immigration law, which includes deportation. A total of 1,673 former Burundian refugees are currently in Tanzania with their whereabouts unknown. These refugees will likely be illegally living in Tanzania after 2012 and subject to forced deportations.

The repatriation of the Burundian refugees from Mtabila camp is being facilitated by the Tanzanian Government, Burundi Government, UNHCR, IOM and other partners with the support of Burundi Red Cross and Tanzania Red Cross.

The Preliminary Emergency Appeal enabled Burundi Red Cross to respond well with timely relief assistance, reception and orientation, psychosocial support, Restoring Family Links (RFL), emergency health, water, sanitation and hygiene. All the above were carried out by Burundi Red Cross during returnees transit to their new homes.

This Emergency Appeal will therefore support Burundi Red Cross in assisting the returnees as they seek to fully integrate with their host communities. The target sectors include; relief, water and sanitation, health and hygiene promotion, epidemic monitoring and reporting. With a few more refugees expected for deportation in 2013, assistance will also be rendered in line with the ongoing operations.

[<click here to view the attached Emergency Appeal Budget; here to link to a map of the affected area; or here to view contact details>](#)

The situation

Late 2011, the Government of Tanzania decided to close the Mtabila Refugee camp (in the District of Kigoma, in Western Tanzania) by 31 December 2012. The camp was hosting a number of refugees, including some 37,592 Burundian refugees who for the most part, fled their country in 1993 following the killing of Melchior Ndadaye, a former President of Burundi and the civil war that followed.

In September 2011 to mid 2012, the Government of Tanzania and UNHCR jointly interviewed the inhabitants of Mtabila camp in order to determine their refugee status. A total of 2,521 individuals were found to be in need of continued international protection and thus the Government of Tanzania agreed to transfer them to Nyarugusu refugee camp. According to UNHCR reports, the rejected cases were given a chance to appeal.

The Government of Tanzania decided to repatriate the remaining Burundian refugees who were deemed not in need of protection before the end of 2012, and the refugees were notified of this decision. A phased closure of camp zones was supposed to be under way and should have corresponded with cessation of all assistance. By 11 December, 2012 a total of 33,819 refugees had voluntarily returned to Burundi as planned by the Tanzanian government and UNHCR. However, a total of 1,673 more are still in Tanzania risking forced deportation in 2013. There are two possible scenarios for those who have remained behind illegally;

- **Worst case scenario:** 1,673 former Burundian refugees of Mtabila camp are deported by the Tanzanian authorities at all entry points located on the border with Tanzania. The groups of deportees include the injured, unaccompanied and separate minors, women and children.
 - **Most possible scenario:** 1,673 former Burundian Refugees of Mtabila camp are deported by the Tanzanian authorities at the entry points located in the Southern region of Burundi.
- There also exists the possibility that even Burundians without proper papers will be deported regardless of whether they were refugees or not.

The Tanzania Red Cross Society (TRCS), in collaboration with its partners, has been providing services in the refugee camps specifically curative and preventive health, nutrition, water and sanitation services.

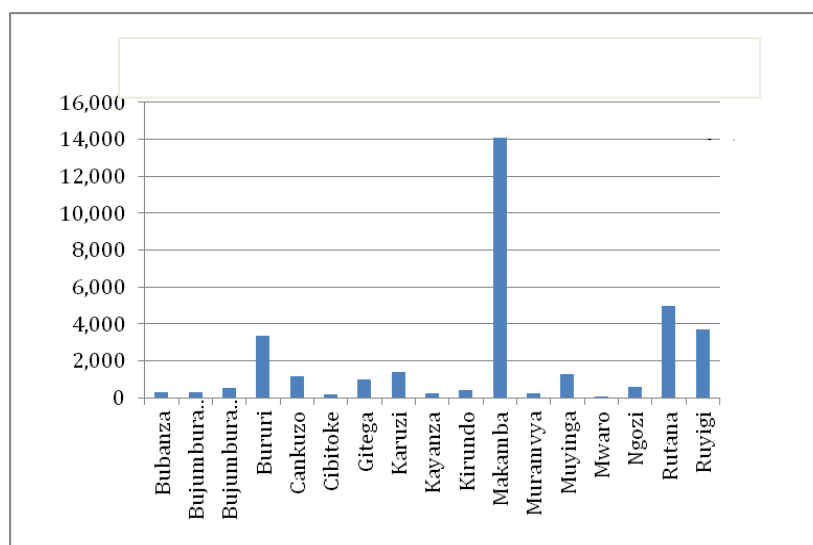
Through a DREF operation launched on 9 July 2012, TRCS has been working on pre-departure medical screening, departure screening and ambulance escorts of repatriation convoys from the refugee camp up to the border point of the receiving country.

Burundi Red Cross on the other side of the border has been engaged in various coordination mechanisms and meetings with the government, UNHCR and other agencies to prepare for receiving the returnees from Tanzania. The BRC has successfully delivered in its mandate to support returnees at the transit point and onward re-establishments of family links. The next important responsibility for BRC and other humanitarian actors is to help them reintegrate with the host community as well as manage disease outbreaks such as cholera currently being reported in sections of the returnees areas.

Table1: Summary of the number of refugees repatriated in Burundi by 11 December 2012, with settlement by Province and Communes. (Source: UNHCR Burundi)

Province	District	Total	Province	District	Total	Province	District	Total
Bubanza	Bubanza	70	Cankuzo	Cankuzo	152	Muramvya	Bukeye	56
	Gihanga	83		Cendajuru	296		Kiganda	4
	Mpanda	73		Gisagara	455		Mbuye	78
	Rugazi	50		Mishiha	212		Muramvya	8
	Musigati	12		Kigamba	58		Rutegama	101
Bubanza Total		288	Cankuzo Total		1,173	Muramvya Total		247
Buja Mairie	Buyenze	4	Buja Rural	Bugarama	247	Karuzi	Bugenyuzi	216
	Bwiza	7		Isale	16		Buhiga	83
	Cibitoke	7		Kabezi	40		Gihogazi	943
	Gihosha	29		Kanyosha1	10		Gitaramuka	71
	Kamenge	107		Kinama	1		Mutumba	23
	Kanyosha2	68		Muhuta	84		Nyabikere	29
	Kinama	81		Mutimbuzi	112	Shombo	32	
	Nyakabiga	1		Nyabiraba	3	Karuzi Total		1,397
	Buterere	4		Mubimbi	1	Kayanza	Gatara	3
	Musaga	1		Null	1		Kabarore	26
Buja Mairie Total		309	Buja Rural Total		515		Muhanga	27
Bururi	Burambi	147	Cibitoke	Buganda	102		Rango	165
	Bururi	35		Bukinanyana	14		Matongo	8
	Buyengero	108		Mabayi	8	Kayanza	21	
	Rumonge	3,054		Mugina	26	Gahombo	2	
	Vyanda	7		Murwi	14	Kayanza Total		252
	Mugamba	8	Rugombo	44	Muyinga	Buhinyuza	79	
	Matana	3	Cibitoke Total			208	Butihinda	34
	Rutovu	8	Kirundo	Bugabira		89	Gashoho	24
Bururi Total		3,370		Busoni		113	Gasorwe	50
Ngozi	Busiga	21		Bwambarangwe		66	Giteranyi	827
	Kiremba	42		Gitobe	29	Muyinga	232	
	Marangara	14		Kirundo	35	Mwakiro	25	
	Mwumba	29	Vumbi	24	Muyinga Total		1,271	
	Ngozi	36	Ntega	45	Mwaro	Kayokwe	18	
	Ruhororo	398	Kirundo Total			401	Ndava	14
	Tangara	48	Makamba	Kayogoro		2,962	Nyabihanga	6
	Gashikanwa	1		Kibago	519	Rusaka	1	
Nyamurenza	5	Mabanda		884	Mwaro Total		39	
Ngozi Total		594		Makamba	395	Ruyigi	Butaganzwa2	653
Gitega	Bugendana	105		Nyanza-Lac	9,068		Butezi	358
	Bukirasazi	91	Vugizo	234	Bweru		139	
	Buraza	84	Makamba Total		14,062		Gisuru	1,209
	Giheta	57	Rutana	Bukemba	526		Kinyinya	600
	Gishubi	45		Giharo	3,312		Nyabitsinda	393
	Gitega	230		Gitanga	62	Ruyigi	372	
	Itaba	143		Mpinga-Kayove	698	Ruyigi Total		3,724
	Makebuko	46		Musongati	251			
	Mutaho	186	Rutana	113				
	Nyanrusange	12	Rutana Total		4,962			
Ryansoro	8							
Gitega Total		1,007						

Figure 1: Returnee population distribution in the various provinces as of 11 December 2012



BRC will focus on the provinces of Makamba, Bururi and Rutana given that about 60 percent of the returnees have gone back to 7 communes/districts¹ in the above three provinces that needs more support for rehabilitation of returnees.

Coordination and partnerships

The **Ministry of National Solidarity** has the overall lead role and is therefore in charge of coordinating the operation on behalf of the Burundian government. The above Ministry is also in charge of delivering the official Burundian identity cards to the returnees as well as the national health insurance card.

PARESI (Projet d'appui à la Reinsertion des Sinistrés), a division of the Ministry of National Solidarity is in charge of transporting small groups of returnees composed of less than 20 families.

UNHCR is in charge of providing technical support to the Ministry of National Solidarity, and has funded a number of activities within the operation, including the provision of Non Food Items (NFIs) (including agricultural tools) and is also responsible for the protection of the refugees. UNHCR is phasing out the operations now that the returnees are settled except for the 1,673 people who are still in Tanzania. UNHCR and Burundi Red Cross are discussing a possible sub-agreement to continue with monitoring and protection of the returnee households.

WFP has been providing food parcels to the returnees and will continue this support for next six months for the already settled returnees. From January 2013, WFP will support possible returnees at the border with similar support as was during voluntary repatriation. Caritas is an implementing partner of WFP and on behalf of WFP, has been distributing dry rations, which include cereals, pulses, vegetable oil and salt (about 2,100 Kcal per person per day).

The **International Rescue Committee** (IRC) is an implementing partner for UNHCR, and has been in charge of camp set-up and camp management, as well as logistics, the distribution of NFIs (a blanket, a mosquito net, clothes for adults and children, a jerry can, soap, a hoe, a plastic mat) as well as transportation by vehicle for groups of returnees of 20 families or more. The same support will be extended to possible additional returnees in 2013.

African Humanitarian Assistance (AHA) is the health focal point, and therefore in charge of the health care of the returnees.

The **Fédération Nationale des Coopératives du Burundi** (FENACOBUR) is providing on behalf of UNHCR, a sum of 50,000 Burundi Francs to each family of the returnees (about USD 40) in two tranches (10,000 Burundi Francs at the arrival in the transit camp and the balance on arrival in the final destination in the district).

UNICEF is providing school supplies and the **FAO** has made a soft commitments for seed distribution. Based in the updated report FAO has not yet distributed seeds to returnees.

IOM will profile all returnee households and compare with information before repatriation. Detailed community assessments on livelihoods and shelter will be conducted by February 2013 to inform better programming. IOM will undertake community resource and capacity mapping from where gaps can be identified and BRC has been requested to offer support in this process.

Coordination meetings have been taking place in Bujumbura every fortnight, under the coordination of the Ministry of National Solidarity, with the support of UNHCR. Daily coordination meetings have also been taking place in Makamba, near the main border entry point for the returnees, again under the coordination of the Ministry of National Solidarity with the technical support of UNHCR. Burundi Red Cross participated in all the above coordination meetings and has been sharing information with key stakeholders in formal and informal forums.

¹ This is based on the UNHCR assessments and beneficiaries interviews.

ICRC is supporting Restoration of Family Links activities in the camp and together with Burundi Red Cross have been holding regular coordination meetings.

Burundi Red Cross continues to coordinate its activities with other Movement partners who are present in Burundi, including the Flemish and French speaking Belgian Red Cross, the Spanish RC, Luxembourg RC, and the German RC.

Red Cross and Red Crescent action

Since the beginning of this repatriation operation on 31 October 2012, Burundi Red Cross has taken part in the response operation alongside other partners. Burundi Red Cross mobilized 10 First Aid teams composed of 10 trained volunteers, working in morning and afternoon shifts and provided psychosocial support to the returnees, as well as orientation on how the returnees can obtain basic services from the government, such as national identity documents, government health insurance card and other services. BRC will continue to provide same support to the remaining 1,673 refugees who might be deported in 2013.



Families returning to Burundi from Tanzania. Photo/ Burundi RC

Burundi Red Cross has also been providing water trucking to the transit centers that have no water, delivering 40,000 litres of water per day over a period of 10 days. BRC has also been working to Restore Family Links for returnees, helping them connect with their friends and families as well as monitoring all potential entry points, to make sure that if some returnees come into the country through the entry points that UNHCR and other actors are not monitoring, that those returnees still receive adequate services. The distribution of shelter kits was included in the Preliminary Emergency Appeal, however due to lack of resources, shelter kits have not been distributed even though some returnees are in dire need of shelter.

The needs

During a meeting held on 10 December 2012 at Makamba, various needs were identified as the priority intervention areas in 2013. These include; access to shelter, access to clean water and adequate sanitation, access to education, access to Health and hygiene, Income Generating Activities (IGA) initiatives, monitoring on the re-integration of returnees and re-establishment of family links. UNHCR will train BRC volunteers in the basic principles of protection and other related topics necessary for the accomplishment of their mission.

Additional returnees in 2013: BRC will continue giving psychosocial support to possible returnees in 2013 because of the trauma that the returnees might go through in being deported out of Tanzania; First Aid and referral services to sick and the injured as well as support in re-establishing Family Links to new arrivals in 2013 and provision of trucked water at transit camps where there is none. Unaccompanied minors are vulnerable, and in need of special care and referral to existing services which will be offered by the government and by other agencies. The Ministry of National Solidarity will issue official Burundian identity cards to the returnees. It is not yet confirmed if the government will provide the additional returnees in 2013 with national health insurance card.

Resettled Returnees: At the moment the resettled 33,819 former Burundian refugees from Mtabila camp are in urgent need of humanitarian support in the form of basic social services, which have been overburdened by the influx of additional population. The situation is compounded by disease outbreaks such as cholera. The returnees joined an existing population that is facing an ongoing cholera outbreak. Burundi Red Cross has been responding to the ongoing cholera situation through a **DREF operation** launched with the support of IFRC, in December 2012. The Pprovinces of Makamba, Bururi and Rutana are in need of clean water, adequate sanitation facilities and hygiene promotion services. Burundi Red Cross has been trucking water in Nyanza Lac in response to cholera outbreak, which is not sustainable. A more sustainable solution is to rehabilitate a broken water supply system from Mugerama to serve Nyanza Lac that received 9,068 returnees representing 27 percent of total returnees as at 11 December 2012 and also reported the highest number of cholera cases.

Health and Hygiene promotion will be another focal area of response. Through different promotion mechanisms entire communities in target areas will receive hygiene education through PHAST, CHAST, and existing Information, Education and Communication (IEC) materials to promote awareness. Volunteers will conduct door-to-door campaigns and organize promotion campaigns through churches, community groups and other gatherings. For a sustainable outcome, community health and hygiene leaders/clubs will volunteer to monitor each other's health behaviour and conduct self-teaching beyond the operational time frame.

Sanitation coverage will be a crucial area of intervention. This will be achieved through PHAST approach by creating awareness about sanitation. Along with PHAST, subsidies for sanitation will be considered based on the detailed assessment and discussions with communities. The subsidies will be provided in the form of Sanplat moulds distribution for construction of latrine slabs. Hand washing systems will be developed around latrines, along with dissemination of hygiene promotion messages by Burundi Red Cross volunteers.

BRC will scale-up epidemics monitoring and reporting for more accurate and efficient response. The recently introduced mobile technology (Episurveyor) will be employed for data collection. This information will be shared with MoH at different level. Cholera contingency plan will be developed, taking in to consideration of recurring cholera outbreak every onset of rains. This will be incorporated into long-term programming.

Beneficiary selection: The returnees have gone back to their communes of origin, which means that almost every part of Burundi has received some returnees. Initial information from UNHCR indicated that the communes most in need of support (based on existing capacity and on the number of returnees going back to those communes) are the 6 identified in the Preliminary Emergency Appeal. These are Nyanza Lac, Rumonge, Kayogoro, Mabanda, Kibago and Makamba. However, following an analysis of actual arrivals in the communes, an additional commune, Giharo in Rutana Province, is in need of support because of the influx of some 552 households. Therefore, the Emergency Appeal is now targeting 7 Communes in three Provinces which are receiving approximately 60 percent of all returnees and Nyanza Lac and Rumonge provinces are currently experiencing a cholera outbreak.

Table 2: Summary of returnees in the 7 communes/districts

Makamba Province				Bururi Province	Rutana Province		
Nyanza Lac	Makamba	Kibago	Kayogoro	Mabanda	Rumonge	Giharo	TOTAL
1,511 HH	66 HH	87 HH	494 HH	147 HH	509 HH	552 HH	3,366 HH
9,068 people	395 people	519 people	2,962 people	884 people	3,054 people	3,312 people	20,194 people

The target beneficiaries will include some unaccompanied minors as well as the elderly with limited mobility and are therefore unable to independently take care of themselves. People suffering from chronic diseases constitute another category of people with special needs.

Immediate needs: All possible returnees into Burundi in 2013 will need assistance in the form of restoring family links. This will be done in collaboration with ICRC. All the returnees will also receive assistance in terms of reception and orientation as well as psychosocial support from Burundi Red Cross. A Human Rights association, Ligue Iteka, is responsible for assisting unaccompanied minors, focusing on protection. The special care to be given to the most vulnerable group specifically people with chronic conditions include an insurance medical coverage and card to be used in the public hospitals and health centres for one year through the support of UNHCR. A MoU between UNHCR, Burundi Red Cross and Ligue Iteka will be signed during 2013. The BRC will monitor and refer all the vulnerable groups and unaccompanied minors to the Ligue Iteka for their protection; education, access to the land and health.

Longer-term needs: Longer-term needs include access to clean water, adequate sanitation, health and hygiene promotion, epidemics monitoring and reporting as the new arrivals re-integrate into their host communities. In the districts located along the "Cholera Belt", hygiene promotion, prevention, treatment and referral services will continue under DREF activities. To that end, the beneficiaries will need protection; livelihood support and all other forms of assistance that will help them become independent contributors to their new communities.

The proposed operation

Having established the exact needs of the returnees upon return and settlement, as well as their exact numbers, BRC is requesting through this Emergency Appeal to respond to specific needs related to returnees (approximately 20,194 individuals in 3,366 households) going back to Nyanza Lac, Makamba, Kibago, Kayogoro, Mabanda, Rumonge, and Giharo. Possible deportees in 2013 are estimated at a total of 1,673 individuals (279 households) assuming they are all families and not individuals from families who are already returned to Burundi.

- **Reception services and Restoring family links:** Reception and orientation of the returnees, including provision of information on how to obtain government identity documents, the health insurance card (*if applicable*), etc., Restoring Family Links (RFL) and monitoring of non-official entry points.
- **Relief:** A “return package” will be provided to returning refugees to allow them to resettle. This package includes basic NFIs and tools/fixing and tarpaulins to allow them to build a temporary shelter. As resources are made available, Burundi Red Cross will seek to distribute shelter kits and kitchen sets to the returnees who are most in need.
- **Water and Sanitation:** BRC will improve clean water through household-level water treatment, sanitation (including the appropriate use of latrines), and education through PHAST and CHAST tools. The safe water in Mugerama is a crucial issue because there is a temporary shelter centre (CHT) and there is no water in that area.
- **Health and Hygiene Promotion:** BRC has been providing psychosocial support, First Aid and referral to health facilities and plan to conduct health and hygiene promotion. This will employ use of existing IEC materials, door-to-door campaigns, organized community groups and through peer education across different communes.
- **Epidemics Monitoring and Reporting:** The operation is proposing to provide epidemiological surveillance, alert and referral of cases to health facilities. Through this operation, BRC will pilot the use of EpiSurveyor for the reporting of acute watery diarrhoea (AWD). This is with the hope that once a cluster of AWD cases are reported, health centres and facilities will promptly investigate and monitor the situation thus preventing or containing a cholera outbreak. Wherever possible, to ensure that returnees understand their entitlement and access services, a system of beneficiary communication will be developed and utilized.
- **Livelihoods Support/Food Security:** With updated reports FAO has not yet distributed seeds. Considering the situation Burundi Red Cross has plans to organize a seed distribution. The vegetable seeds (including aubergines, cabbages, carrots, onions and tomatoes) will help to ensure that returnees have food to eat or sell, depending on their situation. International Rescue Committee is providing hoes as part of their NFI distribution. Recipients of the IFRC shelter tool kit will also receive tools, as the kit contains a hoe and a spade.

Shelter, settlement and NFIs

Outcome: 2,000 of the most vulnerable returning refugees to Burundi from Tanzania are provided with assistance including temporary shelter kits and appropriate NFIs.	
Outputs (expected results)	Activities planned
<ul style="list-style-type: none"> • 333 returning refugee households are provided with return package including shelter kits and appropriated household items. 	<ul style="list-style-type: none"> • Further assessment on the needs related to shelter kits and kitchen sets • Provision of shelter kit training for volunteers • Distribution of shelter kits to families of returnees who most need them • Distribution of kitchen sets to families of returnees who most need them

Restoring family links

Outcome: Contacts are re-established and maintained between family members for 1,673 returning refugees.	
Outputs (expected results)	Activities planned
<ul style="list-style-type: none"> • 279 returning refugee households have access to appropriate means of 	<ul style="list-style-type: none"> • Reception and orientation of returnees on relevant available assistance on arrival at the transit camp. • Restoration of Family Links for separated returnees and especially

reestablishing and maintain contact with loved ones	minors <ul style="list-style-type: none"> Monitoring of non-official entry points
---	--

Water, Sanitation and hygiene promotion

Outcome: The risk of waterborne and water related diseases is reduced for 20,194 returnees (3,366 families), and 4,039 individuals (673 households) from host families (representing 20% of host communities) in Nyanza Lac, Makamba, Kibago, Kayogoro, Mabanda, Rumonge, and Giharo communes for 12 months.

Outputs (expected results)	Activities planned
<ul style="list-style-type: none"> Provision of clean water, adequate sanitation (including excreta disposal, solid waste disposal) and hygiene promotion to selected beneficiaries 	<ul style="list-style-type: none"> Hygiene promotion focussing on household water treatment and safe storage, sanitation and personal hygiene Disease prevention activities focussing on waterborne diseases As a pilot initiative, provision of 2,000 beneficiary menstruation kit 1 and 2 (will be funded through different funding mechanism) Training volunteers on Sanplat latrines production Purchase 1400 Sanplat moulds 200 per commune (produced locally by volunteers as part of IGA) Organise a promotion of Sanplat latrines day including awareness about importance of household latrines. Monitoring latrine construction including number of latrine constructed and in use. Establish vector control and prevention measures. Establish waste disposal measures. Initiate a hygiene promotion campaign within the affected population focusing on behaviour change and targeting 4,039 families through use of existing IEC materials Conduct two trainings in each commune on PHAST for the community and volunteers in the affected branches within the next 12 months. Make use of CHAST for school going children in all the 7 communes in the next 12 months. Carrying out of door-to-door campaigns, organized groups and through peer education across different communes.

Emergency health

Outcome: Improved health and psychosocial situation of returnees and host communities through health promotion and psychosocial support in three selected provinces.

Outputs (expected results)	Activities planned
<ul style="list-style-type: none"> Better early detection and effective response to waterborne disease. First Aid support is provided to returnee population 	<p>Using the volunteer epidemiological control module:</p> <ul style="list-style-type: none"> Establishment of epidemic surveillance system for waterborne (Cholera) by using mobile technology for early warning and response. Conduct an assessment to determine the benefits and possibilities of using a mobile phone for reporting of acute watery diarrhea. Training Emergency Brigade Team, community health workers and MoH on Episurveyor Scaling up the use of mobile technology (Episurveyor), to alert HQ and efficiently respond to waterborne disease like Cholera outbreaks. Development of Cholera contingency plan Purchase mobile phones for monitoring of communicable diseases Purchase of promotional materials (IEC) Training/refresher of 90 volunteers on First Aid Provision of first aid by volunteers and referral of serious cases to health facilities

<ul style="list-style-type: none"> • Psychosocial support is provided to 1673 individuals (279 families) and 130 staff/volunteers of the Burundi RC as based on need. 	<ul style="list-style-type: none"> • Train 30 staff and volunteers of Burundi RC on PSP intervention. • Provide Psycho-Social Support to 279 families affected by the emergency. • Provide Psychological Support to 130 staff and volunteers of Burundi Red Cross engaged in emergency response.
--	---

Livelihoods

Outcome: Reduce food insecurity for 2,000 most vulnerable returning refugees being repatriated to Burundi from Tanzania	
Outputs (expected results)	Activities planned
<ul style="list-style-type: none"> • Productive assets/inputs for primary production are provided for 333 returning refugee households in accordance with the seasonal calendar 	<ul style="list-style-type: none"> • Procurement of vegetable seeds (aubergines, cabbages, carrots, onions and tomatoes) • Distribution of vegetable seeds • Ongoing monitoring

Logistics and Technical back-up by IFRC

Outcome: The local logistics capacity of Burundi Red Cross to support the repatriation process is strengthened with the enhanced technical logistic support of the IFRC's East Africa Regional Representation Office	
Outputs (expected results):	Activities planned:
<ul style="list-style-type: none"> • Enhanced logistics capacity and technical support facilitate the assistance to the target 3,366 households 	<ul style="list-style-type: none"> • Coordinate with BRC logistics team to ensure that IFRC procurement procedures are strictly adhered to • Support the delivery of equipment and supplies dedicated to the operation

Capacity of the National Society

Burundi Red Cross is organized into two main structures: governance and the executive. The latter is headed by an appointed Secretary General, responsible for the daily management of the National Society. The executive consists of operational programmes in Disaster Management and Assistance to vulnerable groups, Organizational Development and Health Care, all assisted by programme coordination services and planning, monitoring, evaluation and reporting. There are additional divisions for Communications, Finance, Administration and Logistics, as well as Public Relations and Resource Mobilization. The National Society has 28 ongoing projects currently.

There are 17 branches across the country namely; Ngozi, Gitega, Makamba, Kayanza, Bubanza, Muramvya, Buja-Mairie, Bujumbura Rural, Kirundo, Muyinga, Cibitoke, Bururi, Mwaro, Chankuzo, Karuzi, Rutana and Ruyigi. Each branch has a National Disaster Response Team (NDRT). There are 6 disaster preparedness NFI warehouses countrywide, including one central stock at the headquarters and 3 Health Centres currently managed by Burundi Red Cross in three different branches.

There are 176 full time staff, 350,000 Red Cross volunteers countrywide and hundreds of First Aid Teams active in all branches. Logistical capacities include at least one car, one motorcycle, an office, a Branch coordinator and an accountant for each branch.

Communications and Fundraising-Advocacy and Public information

Communications activities aim to maintain a regular flow of information, between the field and key stakeholders. This will be vital for fundraising, awareness of the work of the Red Cross and maintenance of a strong profile of emergency operation in the given humanitarian situation. This will be maintained between those working in the field and other stakeholders, including the media and donors, to promote greater quality, accountability, and transparency.

Resource Mobilisation and Communications will support the objectives of this Emergency Appeal, to increase the profile, funding and other support for BRC and IFRC, and will provide a platform on which to advocate the interests of vulnerable groups of people. Partners will receive information and materials they

can use to promote the operation. Relevant information and publicity materials, including audio-visual products, will be channelled through IFRC's public website.

Capacity of the IFRC

The IFRC East Africa Regional Representation, based in Nairobi supports Burundi Red Cross through additional technical support from IFRC's East Africa Regional Representation, the Africa Zone office and the Secretariat in Geneva. Technical capacities available include Disaster Management, Health and Care, Water and Sanitation, Finance and Administration, Communication and Security as well as Resource Mobilization and Planning, Monitoring, Evaluation and Reporting (PMER).

Walter Cotte
Under Secretary General
Programme Services Division

Bekele Geleta
Secretary General

Contact information

For further information specifically related to this operation please contact:

- **In Burundi Red Cross:** Katiyunguruza Anselme; Secretary General; Email: katiyunguruza.anselme@croixrouge.bi; Phone: +257.21.62.46; Fax: +257.21.11.01
- **IFRC Regional Representation:** Finnjarle Rode; Regional Representative for East Africa; Nairobi; Email: finnjarle.rode@ifrc.org; Phone: +254.20.283.5000;
- **IFRC Africa Zone:** Daniel Bolanos; Disaster Management Coordinator for Africa; Nairobi; Email: Daniel.bolanos@ifrc.org; Phone: +254.731.067.489
- **In Geneva:** Christine South; Operations Quality Assurance Senior Officer; Email: christine.south@ifrc.org; Phone: +41.22.730.4529
- **IFRC Regional Logistics Unit (RLU):** Ari Mantyvaara Logistics Coordinator; Dubai; Email: ari.mantyvaara@ifrc.org; Phone: +971.504.584.872; Fax: +971.4.883.22.12

For Resource Mobilization and Pledges:

- **IFRC Africa Zone:** Loic de Bastier; Resource Mobilization Coordinator for Africa; Addis Ababa; Email: loic.debastier@ifrc.org; Phone: +251.93.003.4013; Fax: +251.11.557.0799

For Performance and Accountability (Planning, Monitoring, Evaluation and Reporting):

- **IFRC Africa Zone:** Robert Ondrusek; PMER/QA Delegate for Africa; Nairobi; Email: robert.ondrusek@ifrc.org; Phone: +254.731.067.277

How we work

All IFRC assistance seeks to adhere to the Code of Conduct for the International Red Cross and Red Crescent Movement and Non-Governmental Organizations (NGOs) in Disaster Relief and the Humanitarian Charter and Minimum Standards in Disaster Response (Sphere) in delivering assistance to the most vulnerable.

The IFRC's vision is to inspire, encourage, facilitate and promote at all times all forms of humanitarian activities by National Societies, with a view to preventing and alleviating human suffering, and thereby contributing to the maintenance and promotion of human dignity and peace in the world.



The IFRC's work is guided by Strategy 2020 which puts forward three strategic aims:

1. Save lives, protect livelihoods, and strengthen recovery from disaster and crises.
 2. Enable healthy and safe living.
 3. Promote social inclusion and a culture of non-violence and peace.
-

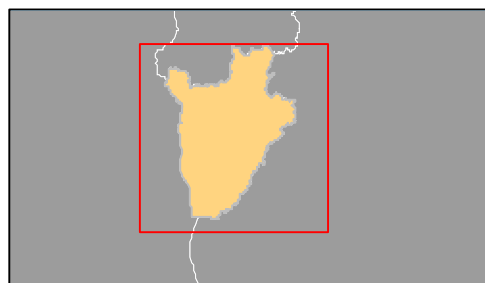
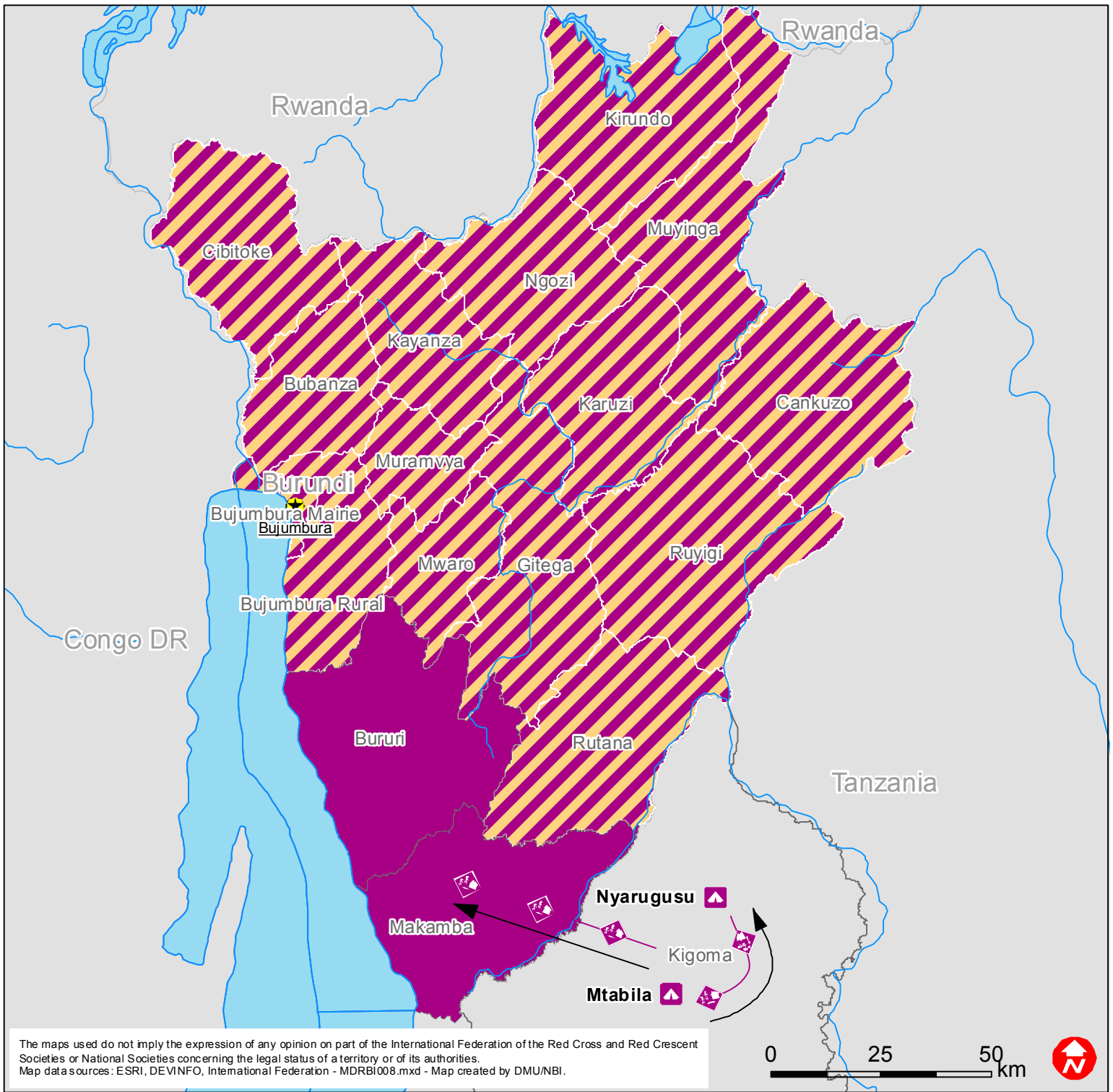
EMERGENCY APPEAL



24-01-13

Budget Group	Multilateral Response	Inter-Agency Shelter Coord.	Bilateral Response	Appeal Budget CHF
Shelter - Transitional	156,900			156,900
Seeds & Plants	8,500			8,500
Water, Sanitation & Hygiene	156,400			156,400
Ustensils & Tools	104,600			104,600
Total RELIEF ITEMS, CONSTRUCTION AND SUPPLIES	426,400	0	0	426,400
Computer & Telecom Equipment	1,800			1,800
Total LAND, VEHICLES AND EQUIPMENT	1,800	0	0	1,800
Transport & Vehicle Costs	16,600			16,600
Total LOGISTICS, TRANSPORT AND STORAGE	16,600	0	0	16,600
International Staff	83,700			83,700
National Society Staff	24,672			24,672
Volunteers	56,790			56,790
Total PERSONNEL	165,162	0	0	165,162
Total CONSULTANTS & PROFESSIONAL FEES	0	0	0	0
Workshops & Training	22,500			22,500
Total WORKSHOP & TRAINING	22,500	0	0	22,500
Travel	18,400			18,400
Information & Public Relations	7,000			7,000
Office Costs	4,000			4,000
Communications	4,950			4,950
Financial Charges	1,500			1,500
Other General Expenses	5,000			5,000
Shared Support Services				0
Total GENERAL EXPENDITURES	40,850	0	0	40,850
Total TRANSFER TO PARTNERS	0	0	0	0
Programme and Supplementary Services Recovery	43,765	0	0	43,765
Total INDIRECT COSTS	43,765	0	0	43,765
TOTAL BUDGET	717,077	0	0	717,077
TOTAL AVAILABLE RESOURCES	0	0	0	0
NET EMERGENCY APPEAL NEEDS	717,077	0	0	717,077



Burundi: Population Movement



-  Provinces supported by BRCS
-  Provinces hosting returnees