


www.ifrc.org
Saving lives,
changing minds.

Emergency appeal operation update

Kenya: Complex Emergency (Floods, Drought and Civil Unrest)

 International Federation
of Red Cross and Red Crescent Societies

Emergency appeal n° MDRKE023

6-month summary update

5 April, 2013

Period covered by this update: June 2012 to December 2012. This update represents a six-month summary of the operation (cumulative narrative and financial).

Appeal target (current): CHF 20,419,397 [<click here to view Interim financial report >](#)

Appeal coverage: 5%; [<click here for updated donor response report, or here for contact details >](#)

Appeal History:

- This [Emergency appeal](#) was launched on 11 June 2012 for CHF 20,419,397 for 12 months to assist 465,844 beneficiaries.
- A DREF ([MDRKE022](#)) of CHF 314,208 was allocated in May 2012 from the IFRC DREF to support provision of immediate support to 20,892 persons displaced by floods in West Kenya, Rift Valley and Coast.



Household reconstruction by project beneficiaries in Kipau village, Tana Delta district. Photo/KRCS

- Two Operations Updates were issued highlighting initial response following the launching of the appeal.

Summary:

The Complex Emergencies appeal sought to cater to the needs of beneficiaries affected by a number of anticipated emergencies including drought, conflicts and floods. The innovative approach to fundraising for disaster response activities was guided by Kenya Red Cross Society's (KRCS) experience in emergency response in Kenya, which in the last five years has followed a cyclical trend. Funds raised under this appeal have enabled the society to respond to beneficiary needs arising from inter-clan conflicts in Tana Delta (Pokomo and Orma clans), Wajir and Moyale districts (Borana and Gabras communities), riots in Mombasa and floods in Western Kenya. The funds also supported preparedness activities in Nairobi, Tana delta and western regions of the country. In addition, the skills of both staff and volunteers were strengthened in the Lower Eastern and Coast regions through refresher training in Emergency Preparedness and response with funds from this appeal. Analysis of response operations undertaken by the national society reveals that conflicts (Inter-clan conflicts, riots, threat of violence) have been the main type of disaster during the period under review.

The environment within which the Kenya Red Cross Society (KRCS) implemented the emergency response in Tana Delta, Moyale and Garrisa districts was highly volatile. The conflicts were characterized by a high number of fatalities and/or casualties with retaliatory attacks being undertaken, further increasing the casualties. The implementation areas were also remote, as was the case of Moyale district and/ or inaccessible by road, as was common in the Tana Delta, where staff used boats to get to villages that required assistance. Not only was the physical capacity of staff responding to the drawn-out conflicts tested but the national society incurred high logistical costs in an effort to provide the affected persons with the best emergency medical care.

Despite these challenges, KRCS, through the support of partner national societies, was able to provide emergency health care to the internally displaced persons through daily medical outreach activities, provide the affected persons with both food and non-food items during the emergency phase of the appeal, improve the access to safe water through emergency water trucking interventions, as well as the distribute water purification chemicals, drill boreholes in target areas and initiate the reconstruction of beneficiary houses destroyed during conflict in Tana Delta. Of greatest impact however, is the initiation of peace talks in both Moyale and Tana Delta districts that brought historically warring communities to the dialogue table. In Tana Delta, the process resulted in the signing of a peace agreement between the two warring communities that led to cessation of attacks and counter attacks between them. The peace that ensued following the signing of the peace agreement allowed for the reopening of schools and medical facilities.

To date, support for the appeal has been received from the Swedish, Japanese, American and Monaco Red Cross Societies. In country funds have been received from corporate partners such as Safaricom Foundation and the Kenya Commercial bank. IFRC, on behalf of the Kenya Red Cross Society, would like to extend thanks to all for their generous contributions.

The Situation

Inter-clan conflicts have been the predominant disaster in the period under review. A summary of the incidences are as follows:

Tana Delta Crisis

14 August 2012: It is reported that herdsmen from Orma community drove their livestock through the Pokomo Community farms in Kau village, in claim that animal migratory corridors had been converted into farms. As the Pokomo community members resisted, 3 people were killed and 7 persons injured in the clashes that erupted. In addition, 198 heads of cattle belonging to Orma community were killed and unknown number seriously wounded or maimed. 110 houses in Kau village were burnt down, displacing the owners and an additional 214 families from Kau and neighbouring villages due to fears of attacks.

22 August 2012: In a retaliatory attack, it is reported that 52 (fifty two) people were killed (42 slaughtered and 10 burnt beyond recognition) in Riketa Village, in a dawn attack carried out by fighters believed to be from Pokomo community. 16 people are reported to have sustained serious injuries and were treated in Witu Health Centre, Mpeketoni sub district hospital and 6 were referred to Malindi district hospital by the KRCS team. 78 houses were burnt down in Riketa Village (inhabited by Orma) leaving the owners homeless. An additional 383 households are reported to have fled the area due to fear. The displaced families settled in Dide Waride village as integrated IDPs i.e. living with relatives and friends.

1 and 7 September 2012: Subsequent attacks followed in Laini, Nduru, Semikaro, Shirikisho and Chamwanamuma villages in which 20 people were killed (1 in Semikaro and 19 in Chamwanamuma). 94 houses were razed in the attacks and at least 200 goats driven away.

10 September 2012: 38 people including 9 police officers were killed in Kilelengwani village. 8 people injured and 167 houses burnt. A second attack in semikaro claimed 4 more lives. A contingent of General Service Police Unit (GSU), administration and regular police was deployed in the second week of September in an operation that aimed at restoring peace and collecting illegal firearms from the warring communities. A blanket 1800hours -0600 hours curfew was invoked under CAP 56 section 9 L.O.K on 10th Sep 2012. However, on the same day, additional number of houses were set ablaze in Ozi village near Kipini. Available reports

indicate that two people drowned in the wet land at the delta as they escaped from the police search team (20 year old and 8 year old) and. Cumulatively, 772 houses have been burnt and 120 people killed.

Peace and a return to normalcy was noted in the area for a period of four months since the last incident on 10 September 2012. Families residing in Chara location, Tarassa division had begun returning to their homes in early November with support from KRCS who provided transport, food and basic NFIs to those who were returning. KRCS had also started shelter reconstruction activities in Nduru Pokomo village, Chara location during this time; with 76 units already completed.

21 December 2012: Renewed fighting was reported in Kipao village, Tarassa Division. There was no clear trigger for the renewed violence. At least 41 people died in the incident. In separate incidents but which may be related to the Kipao conflict, a police officer went missing during the Kipao operations.

27 December 2012: an old man (Pokomo) in company of two youths was attacked in Shirikisho. The young men managed to escape from some youths believed to be of Orma community but the old man was not able. He has gone missing since then. An unconfirmed report suggests that his body was found on the 31 Dec 2012. The old man was a member of Ghasa (Pokomo council of elders).

Another attack was later reported in Nduru-Orma village where suspected Pokomo members attacked the village at around 0530hours when the community was about to begin the Islamic dawn prayers. During this incident, KRCS responded by giving first aid services and referring 4 patients to Malindi District Hospital. There were 9 deaths reported from the incident: 2 females and 7 males. 7 administration police officers were also referred to Malindi District Hospital after being given first aid service by KRCS personnel when their vehicle overturned. They were leaving Nduru village after having done an assessment of the security situation.

A retaliatory attack was reported in Kibusu village (Pokomo village) the following day. The attacks took place at around 0700 hours after the community had already begun the day's activities. During the attack, 19 houses were burnt, with 11 deaths (5 children, 2 women and 4 men). KRCS responded by nursing 6 burn injury cases with 2 being referred to Malindi.

Moyale conflict

Inter-ethnic clashes between the Gabras and the Borana of Moyale district commenced in late 2011. The clashes affected seven locations in Moyale. These are Hellu, Odda, Butiye, Somare, Manyatta, Lami and Kinisa. A total of 17 villages from the seven locations were affected with some of the displaced population crossing over into Ethiopia. The assessment by Kenya Red Cross Society (KRCS) revealed that an estimated total population of 9,553 households (57,318 people) was either directly or indirectly affected.

KRCS staff and volunteers embarked on detailed assessment of the situation to assess the magnitude of impact manifested by the clashes. KRCS staff and volunteers fully engaged separately the warring communities to establish the factual information as regards the impacts of the disaster. The following are the summary findings;

A total of 48 people lost their lives over the last 4 months with 34 people from Garba and 14 people Borana communities. However, there is suspicion that there are more deaths that are not accounted for especially from the Gabra community.

Approximately 1,251 people were reported missing by their respective families with reports indicating that they may have crossed over to Ethiopia or escaped to neighbouring villages.

A total of 580 houses were burnt with an estimated over 300 houses looted of all the belongings (furniture, clothes, utensils etc) after their owners fled from them. 1,075 livestock (105 cattle, 35 camels, 835 shoats, 100 donkeys and unknown number of chicken) were lost or looted during the skirmishes. 20 water storage tanks

¹ 9 bodies were initially found and another batch of five reported. 2 persons were killed after 1600hours of 21st.

(10,000 litres) were vandalized at different community water points. Funan Nyatta primary school (8 classrooms) was razed to the ground which disrupted learning activities in the area. Three rooms in Arosa dispensary was burnt together with the existing medication and equipments while Hellu and Mansille dispensary were looted of all the drugs and other medical equipments stolen but not burnt. The displaced families from Garba community could not access Moyale district hospital based on its location in the midst of the Borana community whom they were embroiled in battle with. The destruction of medical facilities created a crisis in that the affected population had no access to medical care during and after the crisis since the shortage of drugs would take time to resolve. However, ICRC and KRCS supplied drugs consignments to support the operation. The displaced population faced water and food shortages.

Apart from few private primary schools in the district, none of the public schools (primary, secondary and collages) are operational. Students and pupils have fled their areas thus are not even available to attend school.

East Pokot conflict

East Pokot raiders are reported to have attacked Arabal location, on 15 October 2012, at about 5 am. Approximately 200 heads of cattle, 1900 goats as well as 2 donkeys were reportedly stolen from the incident. A high school pupil was also reportedly shot in the leg. There were no deaths reported. At least 3,980 persons were displaced from their homes in Arabal location. The displaced persons camped in schools (Kapendasum, Arabal, Ngecha, Chemogoron and Kasiela Primary Schools, Ngelecha Booster station, Kampudasam dispensaries) and Government administrative posts (Chemogoron chief Post).

Garissa Church attacks

Kenya Defense Forces' mission in Somalia brought with it a series of retaliatory attacks in parts of the country. Grenade attacks and other blasts have become common in Garissa and other border towns with KRCS staff being on high alert in the region.

The national society responded to grenade attacks in an African Inland Church (AIC) and Catholic Church in Garissa in October 2012. KRCS Emergency Medical Services (EMS), staff and volunteers evacuated 10 critically injured beneficiaries who were later airlifted to Nairobi. An additional 30 casualties were referred to the Provincial General Hospital. At least 17 fatalities were reported from the incident.

North Rift flood response

Enhanced rainfall experienced in the latter part of the 2012 resulted in flooding in the North Rift region. Parts of Marigat District experienced flooding as a result of the swelling of Lake Baringo as well as River Endawo and Perkerra bursting their banks. A total population of 3,210 were directly affected by the flooding with an additional 290 households classified as at-risk. The worst affected villages included Masai, Salabani and Loropil of Salabani and Ng'ambo locations which were completely submerged by flood waters. Most of the displaced persons were hosted by residents in neighbouring villages and by the unaffected households. Two market centres, dispensaries, schools, chief's office, churches, Kerio Valley Development Authority (KVDA) field office, AP camp and roads were also submerged. Crocodiles and hippos found in Lake Baringo found their way into homesteads thereby causing a deadly threat to residents in the area. The society distributed a total of 672 tarpaulins in the area.

Coordination and partnerships

KRCS worked jointly with the officials from the Ministry of Education in order to trace and return school going children registered to undertake the national primary school examination that were scheduled for November. Only 47 schools out of a total of 53 schools were operational following the outbreak of conflict. The Society, through its tracing activities, was able to locate and return 201 KCPE candidates to examination centres in Tana Delta from various destinations including Hola, Lamu, Marereni, Mamburui, Malindi, Kilifi and Mombasa. This intervention enabled the school going children prepare and sit for the KCPE examinations despite the disruption to learning resulting from the conflict. The children were integrated in centres within the district. It is

surprising to report that Tana Delta recorded a better performance compared to the previous years. Tana Delta was the first district in the county.

KRCS also participated in an interagency multi sectoral detailed assessment in collaboration with the United Nations Children's Fund (UNICEF) and United Nation Agency for the Coordination of Humanitarian Affairs (UNOCHA) (amongst others) following renewed fighting in the Tana Delta in January 2013. The conflict resulted in the death of 41 persons; of those deceased 6 were women and 13 were children. The team found that ongoing solutions for those displaced and host communities, access to basic needs and services, livelihood solutions as well as coordination at the district level were the key priorities at the time of the assessment.

The Society received in-kind donations from various stakeholders and/or organizations e.g. The Kenya commercial bank, Malindi branch donated food items to be distributed to beneficiaries. Bank employees donated 0.38MT of maize, 0.3MT of beans and 0.1MT of cooking oil. The United Arab Emirates Deputy Ambassador, H.E. Mr. Hassan Issa Al Hosani, donated 63MT of maize flour, 8.99 MT of pulses and 4.528MT of vegetable cooking oil. The donation reached a total of 10,070 beneficiaries situated at the IDP camps at the time of distribution.

The Ministry of Special Programmes donated 320 bags of rice and 94 cartons of cooking oil that were distributed to Dide Waride and Ozi IDPs. A total of 1,545 persons were reached by the intervention.

Red Cross and Red Crescent action

The KRCS' response to the disasters during the reporting period was guided by the principles in the Red Cross Code of Conduct which stipulates that "Aid is given regardless of the race, creed and nationality of the recipients and without adverse distinction of any kind. Aid priorities are calculated on the basis of need alone". In Tana Delta district, KRCS staff and volunteers responded to the casualties reported from both the warring communities as soon as the conflict erupted. The areas to respond were guided only by the need on the ground thereby ensuring that the most vulnerable beneficiaries received the assistance that they required. Response activities were guided by the emerging needs on the ground as well as feedback received from the target beneficiaries at the onset of the disasters e.g. when communities brought up the issue of displaced children set to do their national exams, the Society responded by employing tracing skills that resulted in the location and relocation of at least 201 candidates; supported further by a short term school feeding activity for the duration of the exams. KRCS's response in many cases was proportional to the need identified on the ground and could be accessed by all beneficiaries targeted regardless of age, gender etc.

The National Society collected relevant and accurate information through rapid and inter agency assessments including media monitoring and information briefs from collaborating agencies including National Disaster Operation Centre (NDOC) and District and Provincial Administrations in the affected areas. The information gathered was useful in the implementation of an effective intervention which catered to the emerging needs of the target beneficiary. The Emergency Operations Centre (E.O.C) monitored the unfolding crises across the country ensuring up-to-date information.

The society acted on information collected particularly in cases of anticipated violence to establish stand-by teams (in areas such as Nairobi, Coast and Lower Eastern region) and charged with the responsibility to monitor the disaster and coordinate response activities efficiently. The teams underwent refresher training in conducting assessments, beneficiary registration, distribution of NFIs and disaster response. During the appeal, the teams coordinated assessment activities in collaboration with other stakeholders including the local administration. The teams ensured regular information flow with KRCS Head Quarters; which also coordinated logistics and procurement as the crisis progressed.

The NS public relations department was instrumental in creating awareness on KRCS response to various emergencies through regular updates to media houses, one-on-one television interviews and news items in both print media and in-house publications on emerging issues. Utilization of social media platforms has enabled the society gather real time information from the public on current/ ongoing disasters and its response interventions.

Progress towards outcomes

Relief

Outcome: To assist 16,119 households displaced by floods in the Rift Valley, West Kenya, Coast and the lower Eastern regions and 1,258 displaced by civil unrest and clashes in Baringo, acquire temporary shelter, food (High Energy Biscuits-BP %) and Non Food Items.

Outputs (expected results)	Activities planned
The needs of displaced and affected populations are continuously assessed and addressed appropriately	<ul style="list-style-type: none"> • Conduct multi sectoral detailed assessments with involvement of relevant stakeholders for needs and gaps identification • Shelter materials and Non Food Items distributed as per Sphere standards to the displaced population • Distribution of high energy biscuits especially to children under the age of 5, pregnant and Lactating women and the aged. Food is provided by Government) • Rehabilitation of classrooms that were used in provision of temporary shelter • Facilitating of relocation of school going children from affected schools to safer schools for continuous learning
IDP camps are well managed in partnership and in consultation with community leaders and representatives	<ul style="list-style-type: none"> • Coordination of agencies providing humanitarian services in the camps • Management of camps including establishment of representative committees including security committees • Identification of cases requiring protection; mainly victims of gender based violence and other crimes, and provision of protection services • Conduct tracing and family unification services in populations displaced by floods and civil unrest. • Identification of populations with special needs including People Living with Disabilities, people with chronic illnesses, unaccompanied minors and the aged for assistance. • Carry out initial households registration of the displaced persons and continuously update the registers

1) Distribution of Non Food Items (NFI Kits)

Project funds were utilized to purchase 2,842 tarpaulins, 2,842 kitchen sets, 8,024 Jerry cans, 8,024 mosquito nets and 5,684 blankets. Distribution of NFI was carried out in the various regions due to the large number of displacements that occurred during the period under review as follows:

In Tana Delta, Displaced persons were provided with both food and Non-food items comprising of Tarpaulins, mosquito nets, jerry cans, blankets, mats, soap and kitchen sets. The high levels of displacement coupled with the razing of entire villages meant that beneficiaries lost all household items necessary for a normal existence; the NFI kits therefore allowed for continuation of normal life activities such as meal preparation albeit in displacement camps. A total of 11,640 persons have so far benefitted from the intervention.

Name of camp	HH reached	blankets	Mosquito nets	Tarpaulins	Kitchen sets	Soap	Jerry cans	Aqua tabs
Riketa/ Didewaride	278	556	556	278	278	556	556	13900
Witu primary	77	154	154	77	77	154	154	3850
Mpeketoni	28	56	56	28	28	56	56	1400
Riketa/ Didewaride	278	556	556	278	278	556	556	
Kau/Kilelengwani	324	648	648	324	324	648	648	
Chamwanamuma	94	188	188	94	94	188	188	
Witu D.O. camp	120	240	240	120	120	240	240	6000
Vipingoni Primary	56	112	112	56	56	112	112	2800
Kilelengwani/Dide Waride	120	240	240	120	120	240	240	6000
Tarassa primary	235	470	470	235	235	470	470	
Ozi	80	160	160	80	80	160	160	
Idsowe camp	96	192	192	96	96	384	192	
Tara	64	128	128	64	64	264		
Idsowe integrated	80	160	160	80	80	160		
Kipao village	5	10	10	5	5	10		
Garsen sub-branch	5			5				
Total	1,940	3,870	3,870	1,935	1,935	4,078	3,732	20,630

2) Distribution of Relief food

The Society also targeted beneficiaries in Tana Delta with food items. The distribution of food items was integrated throughout the project with the initial distribution carried out in August 2012; following the initial attacks. A summary of the distribution is as follows:

The Society distributed 50 MT of Unimix to displaced communities in August 2012. The beneficiaries located within the IDP camps and those integrated with family and friends were all targeted reaching a total of population of 21,384 beneficiaries. The rations provided were to cater for the beneficiary nutritional needs for one month.

In November 2012, displaced persons returning to their villages (Chara location) were provided with food rations for a month as part of the send off package. The rations were distributed at 75% of rations stipulated by SPHERE standards. Each household received 12kgs of Unimix, 0.56 litres of vegetable oil, 10.35kgs of cereals and 1.8 kgs of Pulses. A total of 11,675 persons were reached by the intervention.

The Society received in kind donations from various stakeholders and/or organizations e.g. The Kenya commercial bank, Malindi branch donated food items to be distributed to beneficiaries. Bank employees donated 0.38MT of maize, 0.3MT of beans and 0.1MT of cooking oil. The items donated were distributed in Vipingoni IDP camp and reached 38 persons. The United Arab Emirates Deputy Ambassador, H.E. Mr. Hassan Issa Al Hosani, donated 63MT of maize flour, 8.99 MT of pulses and 4.528MT of vegetable cooking oil. The donation reached a total of 10,070 beneficiaries situated at the IDP camps at the time of distribution.

Donor	Items	Target beneficiary	Beneficiaries reached
KRCS	50 MT of Unimix	IDPs living in IDP camp and those integrated with friends and family.	15,864
KRCS	42.762 of Unimix	School going children in 57 schools	21,384
KCB Malindi branch staff	0.38MT of maize, 0.3MT of beans and 0.1MT of cooking oil	IDPs in Vipingoni	36
KRCS		Returnees to Chara location	11,675
UAE	63MT of maize flour, 8.99 MT of pulses and 4.528MT of vegetable cooking oil.	IDPs living in IDP camp and those integrated with friends and family	10,070
Total			59,029

A total of 47 schools (out of a total of 53 schools in the entire district) were closed in the Tana Delta as a direct result of the conflict; both teachers and pupils had reportedly fled from their areas of residence to safety. The last quarter of the year is critical for students in class 8 as they sit for the final Kenya National Primary School education examinations in the month of November.



School going children going and coming from school in Tana Delta district. Photo/KRCS

Cognizant of this, KRCS in collaboration with the Ministry of Education carried out the tracing of KCPE candidates that may have fled to neighbouring districts with an aim of ensuring that they prepare and sit for the national examinations. A total of 201 KCPE candidates were traced and returned to examination centres in Tana Delta from various destinations including Hola, Lamu, Marereni, Mamburui, Malindi, Kilifi and Mombasa. The candidates were settled into Kipini (49 pupils), Furaha (67 pupils) and Tarassa (85) primary schools. This intervention enabled all the identified candidates to prepare and sit for the KCPE examinations in centres within the district; resulting in a better performance compared to the previous years. Tana Delta was the first district in the county.

The Society supported candidates located in Kipini Primary (49), Tarasaa primary (85) and Furaha primary (67) schools in the area with UNIMIX for the duration of the exams. Children within this age group have also been taken through child therapy sessions as part of the national society's psychosocial support activities in order to help them recover from the trauma of experienced.

The society is also undertaking household reconstruction under this component of the project. Assessment findings revealed that at least 700 houses were razed as a result of the inter-clan conflict making the need for shelter one of the priorities for the target beneficiaries. Feedback from communities' members in the target areas corroborated the findings of the assessment as households in the target areas ranked the need for shelter as the top priority; they reported that even their desire to receive food rations was pegged on the storage facilities that homes would provide. The intervention designed by the Society was participatory with the community members contributing part of the construction materials (timber) from their own coconut plantations as well as labour for the process. Social support within the community was demonstrated when communities' members that did not have plantations of their own e.g. women headed households, widows etc. The Society proposes to construct a total of 808 homes for the target beneficiaries. The houses are constructed using locally available materials and employs traditional construction methods utilized by the target communities. All houses are fitted with corrugated iron sheet roofs.

A summary of the household units constructed to date are summarized as follows:

Target area	Units constructed
Kipau	5
Kau	35

Early Recovery

Outcome 2: To contribute to the rehabilitation of disrupted livelihoods of the most food-insecure population groups through essential crop interventions, rehabilitation of damaged irrigation infrastructure and productive assets by assisting 16,119 displaced households towards early recovery from effects of floods as well as drought in areas that didn't receive rainfall.

Expected Results/ outcomes

- Enhanced food production among farming communities affected by floods to contribute towards sustainable food security
- Support the agricultural communities whose farmlands were destroyed, with certified fast maturing, high yield seeds and seedlings
- Training of district officials and NGOs in household Economy Approach and its application to vulnerability and early recovery analysis
- Updated livelihood baseline data and livelihoods profile for the affected areas in Nyanza, Rift valley and coastal areas.

Planned Activities

- Conduct a detailed assessments of the situation and the needs in the affected areas (to cover immediate, transition and long term programmes including exploring possibilities of implementing livelihood projects like cash transfers).
- Distribution of crop production inputs to the most vulnerable members of the farming community (Seeds: maize (DLC variety) 30MT, Maize seeds (PH4 Variety) 4 MT8, Millet 1MT, Sorghum 2 MT, Cow peas 2 MT, Beans 7.2 MT, Kales 1MT and Rice 4.4MT).
- Procurement of fertilizers to improve crops yields in the affected farms.
- Training on basic agronomic practices to enhance crop yield
- Training on post-harvest management to reduce crop losses including storage
- Provision of 10,000 tree seedlings to be in Gwassi, Suba district. Seedlings will be sources from the Kenya Forestry Service
- Technical support(DRR, risk profile, hazard mapping among others in areas affected by floods for the first time i.e. Gwassi)

Long term interventions

- Food availability improved through increased production and adoption of improved farming practices

- Provision of high quality seeds and farm implements to farmers in the Malindi, Magharini, Nyando, Gwassi and Homa-Bay
- Collaboration with KARI in supply of 1,000,000 cuttings of drought resistant, disease free cassava to affected farmers in Magharini, Machakos and West Kenya Regions.
- Facilitate adoption of improved farming practices among vulnerable groups through trainings in Malindi, Magharini, Nyando, Gwassi and Homa-Bay

Progress:

KRCS proposed to initiate agricultural activities in the agricultural areas of Kau, Ozi and Charra. The project activities sought to provide the local community with sustainable livelihoods options as strategy of positively influencing the eradication of conflict in the Tana Delta since unsustainable livelihood and the competition for limited resources is frequently cited as a reason for the eruption of conflict. Beneficiaries returning to Chara location requested for seeds in order to enable them take advantage of the forecasted enhanced rainfall in December 2012.

Under this component of the project, the society procured 1,200 hand-held hoes and 5 MT of cowpeas and green gram seeds to be distributed to agricultural households. Distribution of the above items has however not occurred due to the eruption of conflict in December 2012. The society is currently still involved in concerted efforts to ensure that households return to their areas of origin through undertaking household reconstruction activities as well as spearheading peace talks that are geared at engaging the warring communities in talks aimed at encouraging peaceful coexistence.

Funds from the appeal have also supported livelihood activities under the integrated livelihood Food Security and livelihood projects implemented by the society as it shifts focus from exclusive emergency response to long term interventions. The project located in Lamu targets 260 households in a 300 acres piece of land with a total population of 1,560 people in Milimani, Basuba, Mangai, Mararani and Kiangwe villages of Boni. In the period under review, the society purchased and distributed 100 pieces of axes and spades as well as 30 wheel barrows to the farming community. The implements were used to clear the farmland.

Disaster Risk Reduction**Outcome 3: Floods and landslide risk is reduced for targeted communities in the Marakwet, Mt. Elgon, West Pokot, Nandi North counties in the Rift Valley, and Nyatike and Suba districts in Nyanza.**

Outputs (expected results)	Activities planned
<ul style="list-style-type: none"> Flood and landslide affected communities are better prepared to predict, respond and recover to disasters. 	<ul style="list-style-type: none"> Train 180 volunteers and staff on Vulnerability Capacity Assessment (VCA) guidelines and tools. Conduct VCA with communities in 6 targeted counties. Develop community hazard maps for each of the mapped communities. Develop community contingency plans and community based early warning systems Develop mitigation micro projects in targeted communities based on VCA findings Public awareness and public education for DRR activities

Progress: To be provided in next operations update

Emergency Health and Care**Outcome 4: To contribute to reduction of morbidities and excess mortality among 140,335 floods affected persons and 185,174 persons affected by acute malnutrition in drought and civil unrest affected areas by strengthening community health structure and systems and implementing high impact interventions.**

Outputs (expected results)	Activities planned
<ul style="list-style-type: none"> Improved access to basic healthcare services among the populations affected and displaced by floods and communities affected by acute malnutrition in drought affected areas. 	<ul style="list-style-type: none"> Support the MoPHS in delivering healthcare to communities affected by floods as well as areas affected by drought conditions through medical outreach and high impact nutrition interventions. Focus to include <ul style="list-style-type: none"> - Treatment of common ailments using standard MoPHS protocols and guidelines. - Accelerated routine vaccination with emphasis to measles and polio vaccination (these have caused outbreaks in recent past). - Provide reproductive health services including ante natal care, skill assisted deliveries, family planning, HIV prevention, services to survivors of sexual and gender based violence including advocacy. - Screening and management of Severe Acute Malnutrition in Partnership with the MoPHS and UNICEF in both flood affected and drought affected areas - Procurement and distribution of medical supplies to areas supporting medical outreaches as well as hospitals without supplies

	<ul style="list-style-type: none"> • Design and Produce assorted IEC materials to support health education by health promotion teams. • Support Ministry of health in the implementation of high impact nutrition interventions particularly IMAM programmes, breastfeeding promotion, de worming, Vitamin A supplementation and zinc supplementation for cases presenting with diarrhoea. Support will mainly be in the form of community mobilization and outreach services • Provision of post trauma counselling and psycho-social support to survivors and their families and first responders (KRC volunteers).
<ul style="list-style-type: none"> • Increased awareness on disease prevention and control by affected communities. 	<ul style="list-style-type: none"> • Capacity enhancement for KRCS Volunteers and MoH CHEWs participating in health promotion activities, disease surveillance as well as mortality surveillance. • Increased disease surveillance from the clinical data supported by community based surveillance. Emphasis to be laid on Acute Watery Diarrhoea, Acute Flaccid Paralysis and Measles. Mortality surveillance to be conducted by KRCS volunteers. • Conduct trainings of KRCS regional and selected branch staff on Basic Health care, Public Health in Emergencies and Leadership • Carry out active case finding of children with acute malnutrition and complications especially in drought stricken areas and refer to nearby facilities for stabilisation and follow up
<ul style="list-style-type: none"> • Reduced risk of development of emergencies including outbreaks of water and vector borne diseases and severe acute malnutrition as a result of enhanced surveillance at the Community level. 	<ul style="list-style-type: none"> • Carry out health promotion activities targeting behaviour change, health seeking behaviour and disease prevention campaigns focusing on diseases with epidemic potential including cholera prevention, prevention of Vector borne diseases including malaria. • Development of volunteers/CHWs kit with community health manuals and key health messages in line with community health strategy. • Recruit and support 10 Nutrition Officers to continually collect and compile relevant information to inform nutrition interventions • Continue to support school feeding in early childhood development Centre's for management of acute malnutrition in counties categorized to be in crisis and alert stages. • Training of nutrition focal persons (TOT) on infant and young child nutrition, emergency nutrition and nutrition surveillance (including how to collect, analyze and report nutrition information)
<ul style="list-style-type: none"> • Improved preparedness and enhanced capacity to respond to epidemics. 	<ul style="list-style-type: none"> • Procure and preposition 5 IEHK and 5 supplementary modules and 3 malaria modules. • Procure emergency nutrition supplements for management of severe acute malnutrition. • Conduct a stakeholder mapping to determine the presence of other actors and their contribution to the health and nutrition sector to avoid duplication of activities and enhance coordination • Continuous monitoring, evaluation and development of operational updates.
<ul style="list-style-type: none"> • Nutrition and health status constantly monitored 	<ul style="list-style-type: none"> • Linking households with children in feeding programmes, pregnant, lactating women to livelihood projects and social protection programmes including cash transfers • Monitoring the coping mechanisms of communities and reporting on the same on a bi weekly basis to branch, region and HQ for timely analysis and feedback on recommendations • Participation in the District food security steering group meetings held on a monthly basis and support (refreshments for meetings, stationery) on need basis. • Set up inter sectoral working group committees that link WASH, health, agriculture, livelihoods and nutrition programme focal persons that will help in drawing up joint action plans required to advance improvements in health and nutritional status of beneficiaries

Progress: The Society purchased medicines and other medical consumables used in the implementation of the emergency health component of the project.

In Tana Delta, the security situation in the target areas meant that beneficiaries were cut off from accessing medical care. Medical facilities around the district remain closed as a result of both the conflict and the

ongoing nurses' strike. Only Ngao district hospital and Oda clinic remain operational within the district. The Society therefore provided first aid services as first responders to villages following fresh attacks. The exercise was daunting given the seriousness of the injuries sustained by the beneficiaries. Patients requiring specialized care were therefore stabilized before transfer to established hospitals in Malindi. Personnel from the medical team had been operating Shirikisho and Semankaro clinic twice a week (Monday and Friday) on the request of the Ministry of Health in order to meet the needs of beneficiaries residing near these areas. The activity would be handed over to the MoH as soon as they were ready to continue to run the clinics.

Emergency health care was provided through emergency medical outreach activities at the site of beneficiary settlement (IDP camps). Analysis of data collected from the outreach activities reveals that respiratory diseases are the most common ailment amongst the beneficiaries. Malaria, Intestinal worms, skin diseases, diarrheal diseases and pneumonia respectively are also frequently diagnosed. The trend has been sustained for the entire duration of the project. Many villages are located along the Tana and mosquito infestation is observable. Also worrying is the consumption of raw water from the Tana by beneficiaries. Poor storage and handling practices are observable amongst the target beneficiaries. Hygiene promotion activities as well as the distribution of point of use chemicals remain a high priority within the target area. Medical outreach activities, providing curative services have so far benefitted a total of 19,088 beneficiaries.

The Society integrated psychosocial support into its health services in order to support the healing of community members from trauma. High levels of trauma were noted amongst the beneficiaries immediately following the attacks and counter attacks. The psychosocial team employs various methods of counselling including group therapy, individual therapy as well as child therapy sessions. A total of 2,376 beneficiaries have so far been provided with this support. Cases that are complex are also referred for specialized care.



KRCS medical team in Tana Delta crossing the Tana River to conduct a medical outreach in Kau village. Photo/KRCS

In Moyale district, a medical team comprising of two clinical officers, four nurses, 1 pharmacist and 10 volunteers trained in the basics of emergency health were deployed to the region to cater the needs of the affected populations. A total of 2,991 beneficiaries were reached by the intervention. Vandalism and looting of local dispensaries effectively eliminated access to medical care for people living in the affected areas thereby making the medical outreach intervention critical to the well being of the affected beneficiaries. The society conducted the outreaches in 12 villages; Bute, Karduse, Katama, Chufa, Odda, Bori, Arosa, Ogomdi, Ogorji, Darale, Kinisa and

Harsaqa during the period under review.

In Garissa district, the Society also provided medical support to 40 persons injured as a result of a grenade attack in two churches in Garissa district. Critically injured patients were airlifted to hospitals in Nairobi in order to save the lives of the beneficiaries.

KRCS Emergency Medical Services (EMS) ambulances were used in all the cases to stabilize and ferry critically ill patients. The ambulance service has drastically improved the emergency health care provided to patients in even the remote areas.

In the period under review the society also carried out a medical outreach intervention for evictees located in the Mau forest area. The joint exercise was conducted in collaboration and teams of Medical officers from the Ministry of Public Health and Sanitation. The team comprised of a clinical officer, two nurses, public health officer, Nutritionist, Pharmacist, Volunteers, and School of medicine interns from Burnt forest District hospital. The three days Medical camp was conducted as from 19th -21st July 2012. More than 400 HH living in the area evicted from Mau forest were attended to.

In Turkana district, 1,170 school going children with disabilities were targeted for a supplementary feeding project spearheaded by the social services component of the health department. The pupils were selected through the administration of a disability assessment tool developed by KRCS in conjunction with the Ministry of Education, Ministry of Health, and Merlin. 50 Primary schools drawn from Turkana Central, Loima and Turkana South and Lokichar participated in the assessment. A total of 1,170 school going children were enrolled into the project following the assessment. The food rations provided are to cater to the nutritional needs of the children for a period of one year.

Water, sanitation, and hygiene promotion

Outcome 5 (a): Improve access to clean, safe and sustainable water facilities for floods affected populations in the Rift Valley, Coast, West Kenya and Lower Eastern regions, civil unrest affected persons in Baringo and Moyale and populations living in north and north east areas that received depressed rainfall

Outputs (expected results)	Activities planned
<ul style="list-style-type: none"> • Improved access to sustainable safe water 	<ul style="list-style-type: none"> • Distribute Point of Use Water Treatment Chemicals to households without portable water increase water safety targeting 350,000 people. • Chlorination of 500 water sources mainly boreholes and shallow wells that were contaminated by flood waters • Rehabilitate 50 shallow wells and boreholes that were destroyed by floods • Rehabilitate latrines in schools hosting displaced populations • Drill and equip 9 borehole motorized water schemes in areas that received depressed rainfall and were not targeted by the drought operation • Disinfection of 500 pit latrines • Construction of 500 emergency latrines in displacement camps • Rehabilitate/pipeline extension targeting 10 existing water supply schemes to enhance water supply to target community • Formulation and training of 69 water management committees to manage the constructed boreholes and /rehabilitated shallow well. • Training water point caretakers/ operators targeting 69 water points • Construction of 35 school rain water harvesting systems, 5 in each of the target regions. • Deployment of mass water treatment plants to displaced communities without access to drinking water.

Outcome 5 (b): To promote hygiene and appropriate gender responsive sanitation for an estimated 280,760 floods affected persons.

<ul style="list-style-type: none"> • Improved health status of the population through behaviour change and hygiene promotion Activities. • Key hygiene messages disseminated effectively at household/community level and positive hygiene behaviour adopted by targeted households • Sanitation access improved 	<ul style="list-style-type: none"> • Train 200 volunteers/TOTs on PHAST and CLTS methodologies. • Cascade the PHAST trainings to the community level by training KRCS volunteers • Conduct hygiene promotion and awareness campaigns in affected communities. • Produce and distribute generic hygiene promotional IEC materials to support hygiene promotion activities. • Construction of 100 emergency latrines units in displacement camps. • Rehabilitation of sanitation facilities in schools hosting Internally Displaced Persons • Construction of 1000 household latrines
---	--

Progress:

In Tana Delta, the Society has so far distributed point of use chemicals (Aqua tabs) to 20,630 beneficiaries in Riketa, Dide Waride, Witu, Mpeketoni, Vipingoni as well as Kilelengwani. The local communities have access to adequate amounts of water although the consumption of raw water is common.

In Moyale district, KRCS undertook emergency water trucking interventions in the villages of Hellu, Mansille, Kinisa, Odda, Butiye, Illad, Sessi and Manyatta reaching a total of 5,941 households with safe water. The society distributed 259,000 litres of water which is within the parameters of the SPHERE standards. The society also purchased four 10,000 litre collapsible water tanks that were established at the location where the displaced were located. The Society was also able to purchase 200 PVC slabs that were deployed to Moyale district. The use of the plastics slabs is cost effective as the target beneficiaries can re-use the slab for future latrine constructions due to the durability.

Appeal funds have also supported the establishment of sustainable water solutions to communities in Garissa and Wajir districts. Funds were utilized to drill and equip four boreholes in Dela and Nannow (Garissa district), Hubsoy and Turgudah (Wajir district).

Community preparedness and response

Outcome: To strengthen community civil unrest resolution mechanisms in areas of potential civil unrest.

Outputs (expected results)	Activities planned
A more prepared community towards civil unrest and its related effects • Reduced frequency and intensity of armed civil unrest	• Roll out a civil unrest prevention strategy alongside other food security contingency and livelihoods recovery plans. • Strengthening and empowering traditional civil unrest resolving mechanism
Strengthened District Peace Committees and its constituent structures • Enhanced capacities of the district peace committees in the affected areas to analyse civil unrests scenarios and generate responses • Peaceful coexistence and sharing of the scarce resources	• Conduct quick trainings on early warning and civil unrest analysis in hotspot areas. • Organize and fund a joint meeting between district peace committees, water users associations, pasture management committees, cross border peace committees and district Task Forces.
• Increased participation of women and youths in civil unrest resolution	• Capacity building for women and the youth through support for income generating activities in order to reduce poverty levels, and increase their roles in civil unrest resolution, management and prevention. • Facilitate Youth activities that encourage peace building such as sports and athletics.

Progress:

In Tana Delta district, the Society has supported a peace initiative under this component of the project. The initiative which was started in January 2013 has resulted in the signing of the peace accord between the warring Pokomo and Orma communities. Ten members from both communities participated in the signing. KRCS role in the process was that of facilitating dialogue between the two communities. The call for dialogue was made by community members who sought an end to the conflict within the area.

Amongst the terms reached include the maintenance of peace by both communities, freedom of movement between community territories and the surrender of arms. The activity has been implemented in collaboration with the provincial administration as well as a peace committee comprising community members. The process has resulted in the reopening of schools and medical services in several areas.

The Society continues to hold regular peace meetings between the two communities in order to address grievances through dialogue. The communities see the initiation of development activities as a strategy for curbing conflict between the two communities.

In Moyale district, the society sought to influence future outcomes in the affected regions by conducting reconciliatory meetings in Moyale that targeted elders from the warring communities. KRCS Secretary General held two separate meetings with elders from both the Borana and Gabra communities following the conflict in order to initiate reconciliatory discussions amongst and between the communities. A total of 90 elders participated in the meetings. A joint meeting was thereafter held by the provincial administration under tight security that brought the elders from the two warring communities together for similar discussions.

In the lower Eastern region, a total of 30 staff and volunteers were equipped with emergency preparedness and response skills. The participants of the training were key in emergency response in the region. A similar training was undertaken in the Coast region for staff involved in emergency response.

Challenges:

- Beneficiaries still exhibit high levels of fear which is hampering relocation of beneficiaries to their areas of origin.

Logistics

Outputs (expected results)	Activities planned
Logistical support will be provided both in primary and secondary transportation as well as warehousing in the field that would enable rapid access to beneficiaries in targeted areas.	KRCS will ensure a coordinated mobilization, reception, warehousing and dispatch of relief goods to the final distribution points. <ul style="list-style-type: none"> • Transport relief supplies to final distribution points. • Identify suitable warehouses for storage of relief items • Maintain mobilization table • Reinforce regional logistics capacity in warehousing and transportation • Procurement of NFIs, seeds, fertilizers, medical supplies and water and sanitation material supplies both locally and internationally

The society carried out procurement of items and equipment under this project through its standardized procurement systems. Bidding for tenders was competitive and overseen by a committee. The supply chain department established and regularly updated a mobilization table.

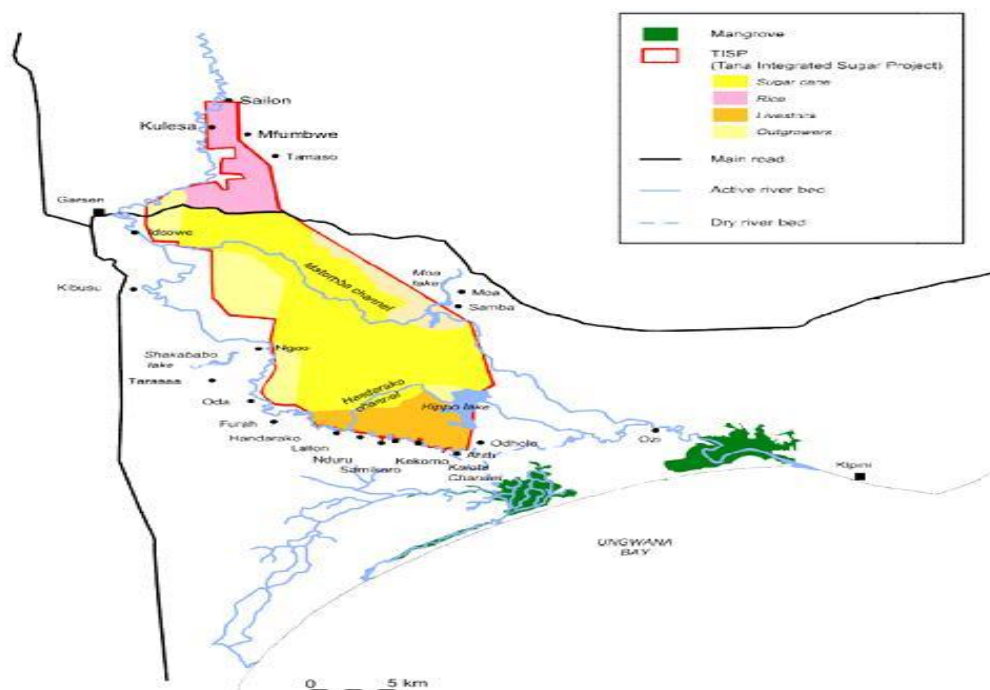
The transportation of relief items was undertaken by the society's logistics department thereby ensuring an effective response.

Challenges:

- High cost of airlifting patients who were critically wounded.

Communication and advocacy

The society developed news stories that were shared with media houses in order to highlight the status of the various crises reported within this report. The department was also at the forefront in providing media houses with relevant information about the disasters and KRCS's responses across the country. Feature stories, case studies as well as information pieces were developed and posted on the KRCS website thereby ensuring that adequate information was available to stakeholders needing to access the information. Social media used during the reporting period provided an interactive forum between the national society and the general public; giving information and receiving feedback in real time. This element of communication was particularly helpful as the national society benefitted from information from the general public which widened the scope of the response.



Map of areas affected in Tana Delta.

Contact information

For further information specifically related to this operation please contact:

- **In Kenya:** Mr. Abbas Gullet, Secretary General, Kenya Red Cross Society, email: gullet.abbas@kenyaredcross.org. Phone 254.20.60.35.93; 254.20.60.86.81/13 Fax: 254.20.60.35.89
- **IFRC Regional Representation:** Finnjarle Rode, Regional Representative for East Africa; Nairobi; phone: +254 20 283 5000; email: finnjarle.rode@ifrc.org
- **IFRC Africa Zone:** Daniel Bolaños, Disaster Management Coordinator for Africa; Nairobi; phone: +254 (0)731 067 489; email: daniel.bolanos@ifrc.org
- **IFRC Geneva:** Christine South, Operations Quality Assurance Senior Officer; phone: +41.22.730.45 29; email: christine.south@ifrc.org
- **IFRC Regional Logistics Unit (RLU):** Marie-Laure de Quina Hoff, Senior Logistics Officer, Dubai; phone +971 4 4572993 | Fax: +971 4 4572994, email: : marielaure.dequinahoff@ifrc.org

For Resource Mobilization and Pledges:

- **IFRC Africa Zone:** Loïc de Bastier, Resource Mobilization Coordinator for Africa; Addis Ababa; phone: +251-93-003 4013; fax: +251-11-557 0799; email: loic.debastier@ifrc.org

For Performance and Accountability (planning, monitoring, evaluation and reporting)

- **IFRC Africa Zone:** Robert Ondrusek, PMER/QA Delegate for Africa; Nairobi; phone: +254 731 067277; email: robert.ondrusek@ifrc.org

How we work

All IFRC assistance seeks to adhere to the Code of Conduct for the International Red Cross and Red Crescent Movement and Non-Governmental Organizations (NGOs) in Disaster Relief and the Humanitarian Charter and Minimum Standards in Disaster Response (Sphere) in delivering assistance to the most vulnerable.

The IFRC's vision is to inspire, encourage, facilitate and promote at all times all forms of humanitarian activities by National Societies, with a view to preventing and alleviating human suffering, and thereby contributing to the maintenance and promotion of human dignity and peace in the world.

www.ifrc.org

Saving lives, changing minds.



The IFRC's work is guided by Strategy 2020 which puts forward three strategic aims:

1. Save lives, protect livelihoods, and strengthen recovery from disaster and crises.
2. Enable healthy and safe living.
3. Promote social inclusion and a culture of non-violence and peace.

Selected Parameters	
Reporting Timeframe	2012/6-2013/1
Budget Timeframe	2012/6-2013/6
Appeal	MDRKE023
Budget	APPROVED

All figures are in Swiss Francs (CHF)

I. Funding

	Pledge	Disaster Management	Health and Social Services	National Society Development	Principles and Values	Coordination	TOTAL
A. Budget		20,419,397					20,419,397
B. Opening Balance		0					0
Income							
Cash contributions							
<i>American Red Cross</i>	M1208045	383,583					383,583
<i>Japanese Red Cross Society</i>	M1207056	253,771					253,771
<i>Red Cross of Monaco</i>	M1211044	12,042					12,042
<i>Swedish Red Cross</i>	M1208003	359,876					359,876
C1. Cash contributions		1,009,272					1,009,272
C. Total Income = SUM(C1..C4)		1,009,272					1,009,272
D. Total Funding = B + C		1,009,272					1,009,272
Coverage = D/A		5%					5%

II. Movement of Funds

	Disaster Management	Health and Social Services	National Society Development	Principles and Values	Coordination	TOTAL
B. Opening Balance	0					0
C. Income	1,009,272					1,009,272
E. Expenditure	-972,495					-972,495
F. Closing Balance = (B + C + E)	36,777					36,777

International Federation of Red Cross and Red Crescent Societies
MDRKE023 - Kenya - Complex Emergency

Appeal Launch Date: 11 jun 12

Appeal Timeframe: 11 jun 12 to 30 jun 13

Interim Report

Selected Parameters	
Reporting Timeframe	2012/6-2013/1
Budget Timeframe	2012/6-2013/6
Appeal	MDRKE023
Budget	APPROVED

All figures are in Swiss Francs (CHF)

III. Expenditure

Account Groups	Budget	Expenditure					TOTAL	Variance
		Disaster Management	Health and Social Services	National Society Development	Principles and Values	Coordination		
A							B	A - B
BUDGET (C)		20,419,397					20,419,397	
Relief items, Construction, Supplies								
Shelter - Transitional	5,882,353						5,882,353	
Clothing & Textiles	621,698						621,698	
Food	1,874,118						1,874,118	
Seeds & Plants	323,195						323,195	
Water, Sanitation & Hygiene	3,746,353						3,746,353	
Medical & First Aid	408,706						408,706	
Utensils & Tools	2,334,331						2,334,331	
Other Supplies & Services	156,040						156,040	
Total Relief items, Construction, Supplies	15,346,794						15,346,794	
Land, vehicles & equipment								
Computers & Telecom	5,882						5,882	
Total Land, vehicles & equipment	5,882						5,882	
Logistics, Transport & Storage								
Storage	123,529						123,529	
Distribution & Monitoring	28,912						28,912	
Transport & Vehicles Costs	144,176						144,176	
Total Logistics, Transport & Storage	296,617						296,617	
Personnel								
National Society Staff	961,824						961,824	
Volunteers	133,608						133,608	
Total Personnel	1,095,432						1,095,432	
Consultants & Professional Fees								
Consultants	85,294						85,294	
Total Consultants & Professional Fees	85,294						85,294	
Workshops & Training								
Workshops & Training	430,827						430,827	
Total Workshops & Training	430,827						430,827	
General Expenditure								
Travel	12,706						12,706	
Information & Public Relations	94,912						94,912	
Office Costs	21,247						21,247	
Communications	24,588						24,588	
Financial Charges	17,414						17,414	
Other General Expenses	1,741,430						1,741,430	
Total General Expenditure	1,912,297						1,912,297	
Contributions & Transfers								
Cash Transfers National Societies		906,112				906,112	-906,112	
Total Contributions & Transfers		906,112				906,112	-906,112	
Indirect Costs								
Programme & Services Support Recov	1,246,254	58,897				58,897	1,187,357	
Total Indirect Costs	1,246,254	58,897				58,897	1,187,357	
Pledge Specific Costs								
Pledge Earmarking Fee		6,785				6,785	-6,785	
Pledge Reporting Fees		700				700	-700	
Total Pledge Specific Costs		7,485				7,485	-7,485	
TOTAL EXPENDITURE (D)	20,419,397	972,495				972,495	19,446,902	

International Federation of Red Cross and Red Crescent Societies

MDRKE023 - Kenya - Complex Emergency

Appeal Launch Date: 11 jun 12

Appeal Timeframe: 11 jun 12 to 30 jun 13

Interim Report

Selected Parameters	
Reporting Timeframe	2012/6-2013/1
Budget Timeframe	2012/6-2013/6
Appeal	MDRKE023
Budget	APPROVED

All figures are in Swiss Francs (CHF)

III. Expenditure

Account Groups	Budget	Expenditure						TOTAL	Variance
		Disaster Management	Health and Social Services	National Society Development	Principles and Values	Coordination			
	A						B	A - B	
BUDGET (C)		20,419,397					20,419,397		
VARIANCE (C - D)		19,446,902					19,446,902		