

www.ifrc.org
Saving lives,
changing minds.

Emergency Appeal Sudan: Food insecurity

 International Federation
of Red Cross and Red Crescent Societies

Emergency appeal n° MDRSD013
GLIDE n° [OT-2012-000049-SDN](#)
13 April 2012

This Emergency Appeal urgently seeks CHF 2,839,471 in cash, kind, or services to support the Sudanese Red Crescent Society to assist up to 64,000 people (12,800 households) with provision of food items for a period of three months and will be completed in July 2012. A final report will be issued three months after the end of the operation, by October 2012.

CHF 250,000 was allocated from the International Federation of Red Cross and Red Crescent Societies' (IFRC) Disaster Relief Emergency Fund (DREF) to support this operation. Un-earmarked funds to replenish DREF are encouraged.



Drought in the Red Sea state of Sudan. Photo: SRCS.

Summary: The Red Sea state in the eastern part of Sudan hosts a large population that is predominantly dependent on subsistence farming and pastoralism. The consistent drought cycles have heavily impacted negatively on the community's coping mechanism, with reports over the last few months documenting a progressive deterioration of the food security situation. The weather conditions over the last two seasons have not been favourable to support rain-fed agriculture practiced by the local people. Consequently, food production and access to food is diminishing and huge food gaps in households is being experienced. According to various reports, the situation is expected to continue deteriorating and not likely to improve until the next harvests are realized. An assessment conducted by the Sudanese Red Crescent Society and its partners in January 2012 confirmed that at least 257,197 people (51,440 households on the basis of five members per family) in the Red Sea state are food insecure and in need of immediate food aid. This emergency appeal targets up to 64,000 people (12,800 households) of the most vulnerable for a general food distribution for three months. The distribution will be done in one cycle to ensure efficiency and cost effective use of resources.

This intervention (food distribution) is supplementary to ongoing medium- and longer-term food security, livelihoods, health and water and sanitation projects conducted by SRCS and partner national societies in the targeted area. An additional disaster risk reduction project has been proposed and scheduled to start in May 2012.

An internal evaluation will be conducted to assess best practices and weaknesses in the operation for consideration in future responses. A Final Report will be made available by 31 October 2012, three months after the operation.

*<click [here](#) to view the attached Emergency Appeal Budget;
[here](#) to link to a map of the affected area; or
[here](#) to view contact details>*

The situation

The food security situation in the Horn of Africa including Sudan is reported to be deteriorating in the last few years. Updates over the last few months from [FEWSNET](#)¹, [FAO](#)², [WFP](#)³ and other agencies involved in food security have consistently indicated the diminishing access to food across Sudan due to various causes including poor rainfall in many areas of the country, high food prices due to inflation, decades of conflict, displacement and poverty. According to FAO's Global Information and Early Warning System on Food & Agriculture (GIEWS)⁴, around 3.2 million food insecure people are estimated to be in need of humanitarian assistance in Sudan. This number is likely to increase for the incoming lean season. This is also raised as early signs in [FEWSNET report](#) concerning Red Sea state, where the food security of poor households (an estimated 50 percent of the population) in Haiya, Dorudeb, Sinkat, Tokar and Halayeb is likely to deteriorate. Market purchase is the main source of food for the greater portion of households, and poor households rely heavily on marginal income sources such as firewood collection, sale of wild fruits, casual labour and traditional gold mining.

According to the report issued by [FEWSNET](#) focusing on the period between October 2011 and March 2012, most of Red Sea state is indicated to be already stressed, with some parts projected as likely to enter into crisis in 2012. Recent reports by [WFP Food Security Monitoring System \(FSMS\)](#) indicate a reduction in areas under cultivation during the 2010/2011 period. The total area under sorghum cultivation both irrigated and rain-fed had been reduced, with only 8,670.52 acres of fair yields for an estimated production of 4,000 metric tonnes of sorghum. Prices of sorghum are at record high levels in most markets. Area cultivated with millet was 17,341 acres, out of which only 12,524 acres were harvested with an estimated production of 2,000 metric tonnes. According to [WFP](#)'s February 2012 update, sorghum prices in Red Sea state have doubled compared to February 2011. Similarly, compared to February 2011, the price of goats has decreased by 22 percent. This is the price of medium size animals which are expected to further decrease with the upcoming summer season. According to information from State Ministry of Agriculture, production per *feddan*⁵ of cereals in Delta Tokar is expected to be up to 50 per cent less compared to last year's harvest. Accordingly, the overall forecast is that the situation is not likely to improve during the year. Taking into account the fact that Sennar and White Nile states, considered as Sudan's food basket, have realized far below normal harvests according to a recent assessment conducted by [FAO](#) in the southern part of Sudan, and the findings of FEWSNET assessment/ forecasts, this indicates an increasingly stressed and food crisis status in Red Sea state.

In January 2012, SRCS and other agencies including the Humanitarian Aid Commission (HAC), Ministry of Health, State Ministry of Agriculture, National Corporation of Forestry, El Sahel Organization and WFP conducted a food security assessment in all Red Sea state localities. This was the second assessment following an earlier one which was conducted in June 2011, in which 6,061 households identified as being in need of food assistance received 90.915 metric tonnes of sorghum. In the January assessment, all localities in Red Sea state were covered, and the results revealed that up to 51,440 households (257,197 people) require food assistance. The assessment team sampled 460 households with 957 children under the age of 5 years and 429 pregnant and lactating mothers with an average malnutrition rate of 5.4 per cent, with Agig showing the most severe effects with the rate of 14.8 per cent among children under the age of 5 years. The assessment also documented a steady increase in the price of sorghum, a key staple food whereby the price of a 90kg bag of sorghum went up to SDG 180 (approximately CHF 61) in January 2012 compare to SDG 110 (approximately CHF 37) in July 2011.

Following this assessment and the continuing deteriorating trend observed as well as reported by FAO in their Food Security Global Watch of [March 2012 on Sudan](#), SRCS has concluded that its ongoing initiatives are not sufficiently capable to meet the needs of selected families who have started to cut down on the number of meals during the [anticipated long lean period](#) (April – June). The launch of this appeal is to seek additional support to mitigate the situation and its impact on vulnerable communities. This appeal will concentrate on approximately 25 per cent of the population in need of assistance, with special focus on the most vulnerable localities and villages where SRCS is currently in operation.

Coordination and partnerships

The IFRC country office in Sudan continues to deliver in its representation, coordination and facilitation role in support of SRCS as well as the activities of IFRC members in the country through three levels of coordination meetings. These are:

- Level 1. Movement Platform as strategic level; with SRCS, IFRC and ICRC participation;
- Level 2. Movement partnerships taskforce as operational level; SRCS, IFRC, ICRC and partner national

¹ United States Agency for International Development (USAID) Famine Early Warning Systems Network

² Food and Agriculture Organization of the United Nations

³ World Food Programme

⁴ 27 March 2012 country brief

⁵ A *feddan*=1.038 acres

- societies (PNSs) in country participation;
- Level 3. Technical ad-hoc committees as technical level. SRCS, IFRC, ICRC and PNSs in country participation based on subject under discussion.

SRCS has integrated food security projects supported by Norwegian Red Cross, Danish Red Cross and by Spanish Red Cross and coordinates with respective representatives as well as other non-Movement partners supporting their work in Red Sea state.

To ensure complimentary efforts in the implementation of this operation, SRCS/IFRC will establish inter-agency coordination meetings at state and national offices with all partners supporting the appeal and present in Sudan. Key stakeholders involved in food security interventions will be sought to support the joint mobilization of food items.

Red Cross and Red Crescent action

Drought, food insecurity and seasonal floods are the main hazards affecting several parts of Sudan including Red Sea. Since the early 1980's, the SRCS has been engaged in implementing and delivering large-scale operations; disaster relief, food security and improving livelihoods for the most vulnerable across the country. Over the years, the SRCS had established response teams at branch and national levels in order to respond to emergencies as fast as possible. The activities planned within the current emergency operation will further incorporate and address the capacity of the National Society, specifically those related to emergency response, recovery and health.

With support from partner national societies, SRCS implements integrated food security projects in Red Sea state, such as the Norwegian Red Cross-supported projects in Sinkat and Tokar localities, Danish Red Cross-supported projects in Haiya and Derudeb localities and the Spanish Red Cross-supported project in Jabiet locality. Tokar locality has been under SRCS's short term food security intervention, with intermittent food relief being provided to vulnerable families. While these efforts have contributed in improving the situation on food security in Red Sea, weather conditions have not been favourable to enable the supported families move towards self reliance in food production. Consequently, many households have had to rely on relief assistance, an option that cannot immediately be met under normal programme plans and/or budgets.

This operation will be used to further strengthen the coordination among Red Cross Red Crescent Movement and non-Movement partners in Red Sea state by establishing regular coordination meetings at local and national levels and sharing updates on the operation's implementation with all key stakeholders.

The needs

Immediate needs

The estimated target population to be supported is up to 64,000 individuals who are food insecure across the Red Sea state. To meet this gap, SRCS plans to provide food items including cereals, pulse (lentils), salt, oil and sugar as well as supplementary food items through existing feeding centres. The operation will focus on general food distribution (50% of required rations) for three months in a single distribution. This ration was decided on due to the fact that the poor rains in 2011 created a cereal deficit of at least 50% at household level in the operational areas of Halayeb, Gunub & Alweeb, Sinkat, Haiya, Duradeb, Tokar and Jabiet Almaaden. This deficit compounds pre-existing vulnerabilities and will increase stress on local coping mechanisms, as this is now the third year of poor crop harvests in the State. The cereal deficit occurs in the context of between 5.4 % and 14.8% GAM rate and limited available nutrition services. In order to limit negative coping mechanisms, such as the sale of livestock and a reduction in number of meals per day and to prevent an increase in the numbers of acute malnourished women and children, an additional 50% ration per household will be distributed in affected areas. A 50% ration over three months delivered before the 'lean' season enables families to plan the use of assets and coping strategies to ensure the best outcome until the predicted harvests in October.

Monitoring of household indicators related to the use of coping strategies will be conducted regularly in addition to community screening and referral of malnutrition cases. Assessment of the rains in June - August and crop yields for the next harvest will be closely monitored to ensure recovery at a household level. If the next crop yield is also below average further interventions may be necessary to prevent further household food security deterioration and the appeal will be revised if required.

The amount of food required for this operation is anticipated to be locally purchased and/or delivered to Port Sudan, the primary destination. A secondary destination will be arranged with in-state delivery contractors and the amounts will vary according to the target groups in each location.

Table 1: Proposed Food Rations

Ration for 12,800 HH (one cycle distribution)				
Item	Ration gms /Person/ day	Person/ month in kgs	Person/ month Kgs (50% ration)	3 months in metric tonnes
Cereals	450	13.5	6.75	1,296
Pulse (lentils)	60	1.8	0.9	173
Salt	5	0.15	0.075	14
Oil	30	0.9	0.45	86
Sugar	30	0.9	0.45	86
Total				1,655

Target beneficiaries

Localities in Red Sea state

S/N	Locality	Population	Target
1	Halayeb	65,330	16,540
2	Gunub & Awleeb	118,914	27,420
3	Sinkat	172,883	38,800
4	Haiya	155,000	37,340
5	Derudeb	75,000	18,300
6	Toker	170,273	39,330
7	Jabiet Almaaden	65,330	16,420
8	Ageeg	78,992	19,200
Total			213,350
Operation Target HHs (64,000 individuals)			12,800

According to the [Sudan Central Bureau of Statistics](#) 2008, the total population of Red Sea State is 1.36 million (56% men and 44% women). This population is divided into urban and rural/nomadic by the percentage of 39% and 61% respectively. According to the assessment and studies, approximately 30% of the total rural population is considered food insecure. The proposed operation under this appeal will target one third (12,800 households) of this population on the following criteria:-

- families whose agricultural production was affected,
- families with children under five years of age or elderly members
- families led by women (head of household)
- Localities where SRCS have ongoing initiatives (Halayeb, Gunub & Awleeb, Sinkat, Haiya, Derudeb, Tokar, Jabiet Almaaden and Agig)

Medium and longer-term needs

In order to link the operation with the medium and longer-term needs, SRCS had focused on the areas where it is already actively implementing various community-based and food security projects, namely in Tokar, Sinkat, Haiya, Derudeb, Jabiet and rural Port Sudan. Such approach will ensure that the National Society has the capacity to help communities assess and design possible future interventions to address longer-term issues related to food security. The activities of SRCS in these localities focus on health/ sanitation, rehabilitation of water sources, improvement of agriculture / animal production and the upgrade of capacities and skills of the local committees, women groups and youth. This is done in close collaboration with government departments concerned, community leaders and local committees. One of the main concerns is the need to recover lost crops and other livelihoods, as thousands of small farmers have lost their source of income and food. Moreover, there is a need to provide access to safe water and restore sanitation structures as a part of the longer-term health and care strategy. There is also need to support affected communities to increase the resilience of their livelihoods through the following:

- Improve agricultural and animal production practices in terms of intercropping, diversifications, apply short –maturing /higher yielding varieties, land preparation practices,
- Offer educational, vocational and skills training opportunities,
- Apply relevant and appropriate market price stabilization mechanisms.

As indicated, SRCS has ongoing projects in the targeted Red Sea state localities that are supported bilaterally by PNSs, government departments and international organizations. In particular, SRCS, in collaboration with Sudan's Ministry of Agriculture and FAO, are providing improved seeds, modern agricultural techniques and equipments to farmers to enable them to increase yields and consequently improved food access. This initiative is ongoing and has been jointly implemented for the last three years, a part of government's commitments under its food security policy. PNSs including the Norwegian, Danish and Spanish Red Cross have a more elaborate and integrated approach in their interventions, with the inclusion of health and water and sanitation components to food security. Under food security, the activities being implemented in these projects include the introduction of new, early maturing or more productive varieties of food crops and food diversification. Improved animal production through the provision of easily accessible and affordable veterinary services is also covered in addition to hygiene promotion. Health related components entail training and awareness rising of volunteers and members of community in first aid, communicable diseases, health in emergencies, HIV and the formation of emergency committees. Water and sanitation activities include training in participatory hygiene and sanitation transformation (PHAST), construction of latrines and rehabilitation of community water points. The water and sanitation component is also supported by government's department of water and environment services (WES).

Presently IFRC, jointly with Norwegian Red Cross and Netherlands Red Cross, have submitted a proposal for a disaster risk reduction project to the European Commission's Humanitarian Aid & Civil Protection (DG ECHO) for consideration to cover three eastern states of Sudan, including Red Sea. The proposed project aims to establish coordination mechanisms for disaster risk reduction programming across the eastern states. Besides improvement of coordination among all stakeholders supporting SRCS work in disaster risk reduction, this project is expected to also enhance community preparedness and resilience to food security issues. Cases of malnutrition will be covered through support of referral of cases for further care. Other components include protection of livelihoods and community infrastructure. This upcoming project will therefore link the activities that will be undertaken under this operation with those being implemented bilaterally with the PNSs in the state.

Proposed operation

Relief distributions (food items)

Outcome 1: The 12,800 targeted households in 8 localities of Red Sea State have food to supplement existing longer-term support to these communities for 3 months.

Outputs	Activities planned
1:1 Immediate food needs of the affected population (12,800 HHs) are met.	<ul style="list-style-type: none"> • Mobilize 60 SRCS volunteers to carry out relief operation verification and distribution (24 volunteers as transportation monitors, 36 volunteers as distribution monitors). • Recruit 10 (8 at State and 2 at HQ) National Society staff to support SRCS in implementing the project • Recruit 1 IFRC National staff to support the implementation of this operation. • Provision of technical support from IFRC regional / global network • Conduct rapid emergency needs and capacity assessments to develop beneficiary targeting strategy and registration system to deliver intended assistance. • Distribute relief supplies and control supply movements from point of dispatch to end user. • Monitor, evaluate and report on the operations activities. • Develop an exit strategy in cooperation with key partners.
1:2 Sufficient nutritious food accessed by the target population.	

Logistics

Outcome 2: Well supported relief operations, ensuring delivery of relief food items in line with the operational priorities.

Outputs	Activities planned
2:1 Coordinated mobilization of relief goods; reception of all incoming goods and efficient dispatch of goods to the final distribution points.	<ul style="list-style-type: none"> • Establish tendering and bidding process. • Rental of 3 stores for food storage • Procurement of 1,656 metric tonnes of mixed food commodities for general and supplementary feeding in line with IFRC procurement standards and procedures • Lease 2 trucks and procure 2 land cruisers locally

	<ul style="list-style-type: none"> • Provision of logistical support for staff and volunteers to carry out the operation • Provide and update resource mobilization table on the IFRC's disaster management information system (DMIS)
--	---

Capacity building of National Society	
Outcome.3 Enhanced operational capacity of SRCS to respond to potential future disasters throughout Sudan	
Outputs	Activities planned
3:1 Increased capacity of SRCS staff and volunteers to respond to disaster.	<ul style="list-style-type: none"> • Deploy 11 additional staff (10 SRCS and 1 IFRC) to manage and report on the operation • Conduct one day orientation workshop for staff and volunteers involved in this operation. • Enhance branch capacity to report on the unfolding situation through training and regular communication and monitoring mentorship support. • Organize and participate in coordination and debriefing meetings with key stakeholders at locality, state and national levels. • Conduct continuous monitoring and evaluation of the operation. • Support field staff in producing regular updates for sharing with stakeholders.
3:2 Information sharing between SRCS and the partners at State, National and International Level was improved.	<ul style="list-style-type: none"> • Collect and prepare stories, pictures and other visual materials including multimedia news updates on the SRCS operations under this appeal. • Organize publicity activities in the affected areas to raise people awareness and knowledge towards SRCS and Red Cross Red Crescent Movement. • Document media coverage regarding situation development under this appeal. • Support communication costs between national headquarters, branch and the localities

Capacity of the National Society

Red Sea State is made up of ten localities that are far and wide geographically. Accessing all the areas is a challenge, particularly during the rainy season, due to poor road conditions. SRCS has a long and well accepted presence in the communities of the Red Sea state since the drought cycles in the 1980s. SRCS continues to provide assistance, rehabilitation and development through various activities in collaboration with Red Cross Red Crescent Movement partners. Most of these activities have had positive impacts on the targeted households and the community at large. To ensure that ongoing activities are not disrupted conducting this operation, SRCS will need to deploy additional staff and volunteers to implement the operation and has included the costs (salaries and incentives) in this appeal. IFRC will also make use of its national, regional and zonal technical capacity to support SRCS in documenting and reporting on this operation.

Capacity of IFRC

The IFRC Sudan country office is part of IFRC secretariat in the Africa Zone. Currently, the IFRC Sudan country office is composed of a country representative and a national programme coordinator and a regional disaster response team (RDRT) relief coordinator who are supported by six other staff including a programme assistant, accountant, account assistant, receptionist, driver and messenger. The office receives additional technical support from IFRC's East Africa regional office, Africa zone office and the Secretariat in Geneva. Technical capacities available include disaster management, health and care, water and sanitation, finance and administration as well as resource mobilization and planning, monitoring, evaluation and reporting (PMER). This appeal has identified the need for additional food security and disaster risk reduction programming in the affected state and in the eastern states of Sudan in general. IFRC will continue to support SRCS in mobilizing resources for these longer-term interventions.

Budget summary

See attached budget (Annex 1) for details.

Jagan Chapagain
Acting Under Secretary General
Programme Services Division

Bekele Geleta
Secretary General

Contact information

For further information specifically related to this operation please contact:

- **In Sudan:** Osman Gafer Abdalla, Secretary General Sudanese Red Crescent Society; Phone: +249.8.378.48.89 email: srcs_sg@yahoo.com
- **In Sudan:** IFRC Country Representation Office; Aisha Maulana, Country Representative; Khartoum; Phone: +249.9.123.04.023; Email: aisha.maulana@ifrc.org
- **IFRC Zone:** Daniel Bolanos, Disaster Management Coordinator, Africa; phone: +254 (0)731 067 489; email: daniel.bolanos@ifrc.org
- **Geneva:** Christine South, Operations Support; phone: +41.22.730.4529; email: christine.south@ifrc.org

For Logistics

- **Dubai:** Ari Mantyvaara, Regional Logistics Delegate Dubai, Phone +971 4883 3887, Mobile +971 50 600 9166, Fax +971 4 883 2212, Email: ari.mantyvaara@ifrc.org

For Resource Mobilization and Pledges

- **IFRC Regional Representation:** Douglas Masika, Senior Resource Mobilization Officer; phone: +254 20 283 5000; email: douglas.masika@ifrc.org.

For Performance and Accountability (planning, monitoring, evaluation and reporting):

- **IFRC Zone:** Robert Ondrusek, PMER/QA Delegate, Africa phone: +254 731 067277; email: robert.ondrusek@ifrc.org



Click here

1. **Emergency Appeal budget and map [below](#)**
2. **[Return](#) to the title page**

How we work

All IFRC assistance seeks to adhere to the [Code of Conduct for the International Red Cross and Red Crescent Movement and Non-Governmental Organizations \(NGO's\) in Disaster Relief](#) and the [Humanitarian Charter and Minimum Standards in Disaster Response \(Sphere\)](#) in delivering assistance to the most vulnerable

The IFRC's vision is to inspire, encourage, facilitate and promote at all times all forms of humanitarian activities by National Societies, with a view to preventing and alleviating human suffering, and thereby contributing to the maintenance and promotion of human dignity and peace in the world.

www.ifrc.org
Saving lives, changing minds.



The IFRC's work is guided by Strategy 2020 which puts forward three strategic aims:

- Save lives, protect livelihoods, and strengthen recovery from disaster and crises.
- Enable healthy and safe living.
- Promote social inclusion and a culture of non-violence and peace.

EMERGENCY APPEAL

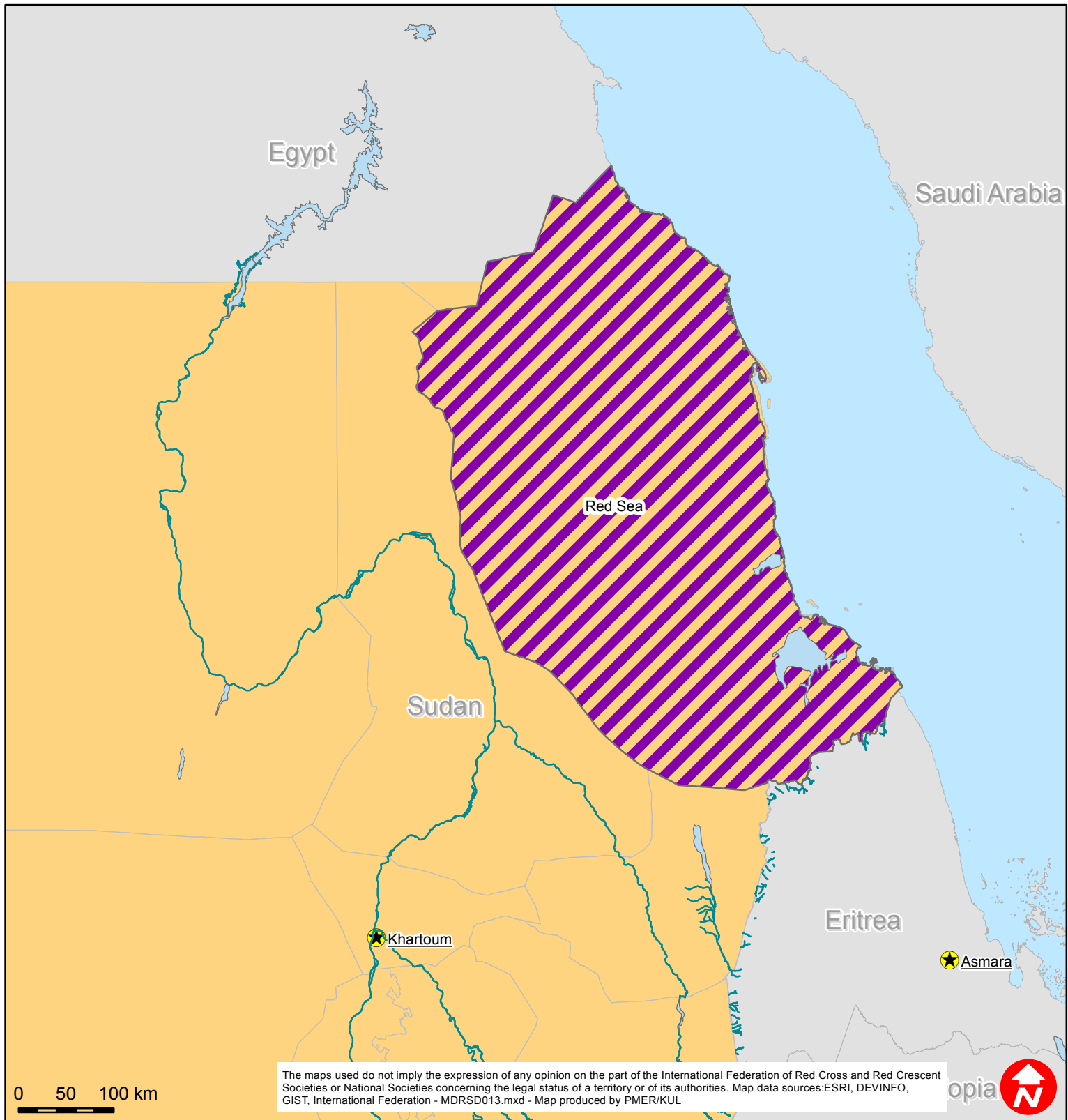
4-13-2012

APPEAL MDRSD013 Sudan: Food Insecurity

Budget Group	Multilateral Response	Inter-Agency Shelter Coord.	Bilateral Response	Appeal Budget CHF
Food	1,858,416			1,858,416
Total RELIEF ITEMS, CONSTRUCTION AND SUPPLIES	1,858,416	0	0	1,858,416
Vehicles Purchase	136,000			136,000
Computer & Telecom Equipment	4,000			4,000
Office/Household Furniture & Equipment	1,000			1,000
Total LAND, VEHICLES AND EQUIPMENT	141,000	0	0	141,000
Storage, Warehousing	22,907			22,907
Distribution & Monitoring	10,000			10,000
Transport & Vehicle Costs	312,283			312,283
Total LOGISTICS, TRANSPORT AND STORAGE	345,190	0	0	345,190
International Staff	4,210			4,210
National Staff	32,000			32,000
National Society Staff	139,752			139,752
Total PERSONNEL	175,962	0	0	175,962
Consultants	2,500			2,500
Total CONSULTANTS & PROFESSIONAL FEES	2,500	0	0	2,500
Workshops & Training	1,744			1,744
Total WORKSHOP & TRAINING	1,744	0	0	1,744
Information & Public Relations	15,900			15,900
Office Costs	8,800			8,800
Communications	12,600			12,600
Financial Charges	5,000			5,000
Other General Expenses	99,058			99,058
Total GENERAL EXPENDITURES	141,358	0	0	141,358
Programme and Supplementary Services Recovery	173,301	0	0	173,301
Total INDIRECT COSTS	173,301	0	0	173,301
TOTAL BUDGET	2,839,471	0	0	2,839,471



Sudan: Food insecurity



 SRCS target area for support