


www.ifrc.org  
Saving lives,  
changing minds.

## Emergency appeal Senegal: Food insecurity

 International Federation  
of Red Cross and Red Crescent Societies

**Emergency appeal n° MDRSN007**  
**GLIDE n° [OT-2011-000193-SEN](#)**  
**20 April 2012**

This Emergency Appeal seeks CHF 3,765,905 in cash, kind, or services to support the Senegalese Red Cross Society (SRCS) to assist some 258,000 beneficiaries. This operation is expected to be implemented over 12 months, and will therefore be completed by April 2013. A Final Report will be made available by July 2013 (three months after the end of the operation).

**Summary:** This Appeal aims to mitigate the impact of the food shortages on household food security due to last year's limited harvest.

A recent humanitarian snapshot issued by the United Nations Office for the Coordination of Humanitarian Affairs (UNOCHA) in March 2012 indicates that food insecurity directly affects about 850,000 people in Senegal, while an estimated total of 2.5 million are indirectly affected.



More than three quarters of the population of the village of Diakassde, northern Senegal, have left due to food shortages. Photo SRCS

This Appeal is being launched in response to a request from the Senegalese Red Cross Society (SRCS) to support food security and nutrition for approximately 258,000 people (about 30% of the directly affected population and approximately 10% of the potentially indirectly affected population) through activities including food and improved seeds distributions, as well as cash transfers, cash for work in disaster risk reduction, establishment of seed banks, and malnutrition screening and referrals. This appeal extends assistance to areas not covered by the recent DREF, in 8 departments not already covered by other humanitarian organizations: Diourbel, Kaffrine, Tambacounda, Kédougou, Kolda, Kaolack, Fatick, and Louga.

CHF 166,428 was allocated from the Federation's Disaster Relief Emergency Fund (DREF) to support emergency needs through provision of food, cash, seeds, farming tools and fertilizer in Saint Louis, Podor, Matam, Ranérou, Kanel and Dagan. All DREF-related activities were implemented by 16 March 2012. Unearmarked funds to replenish DREF are encouraged.

[<click here for the Emergency Appeal Budget; here for a map of affected areas; or here for contact details>](#)

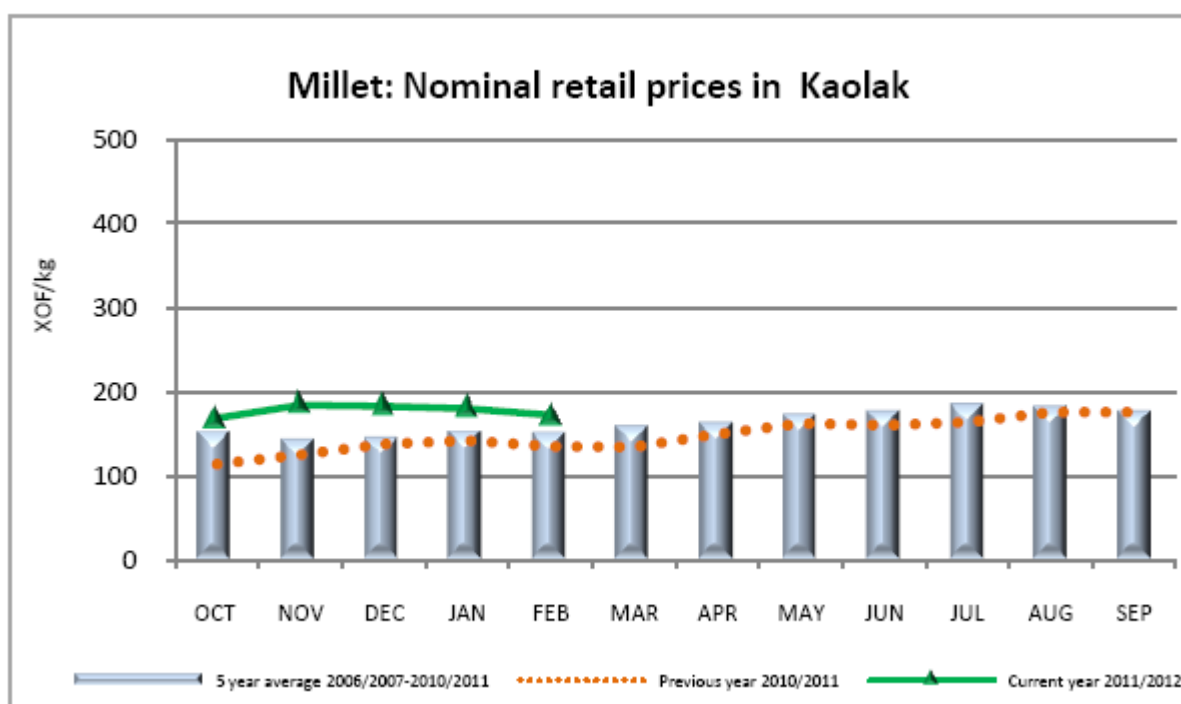
## The situation

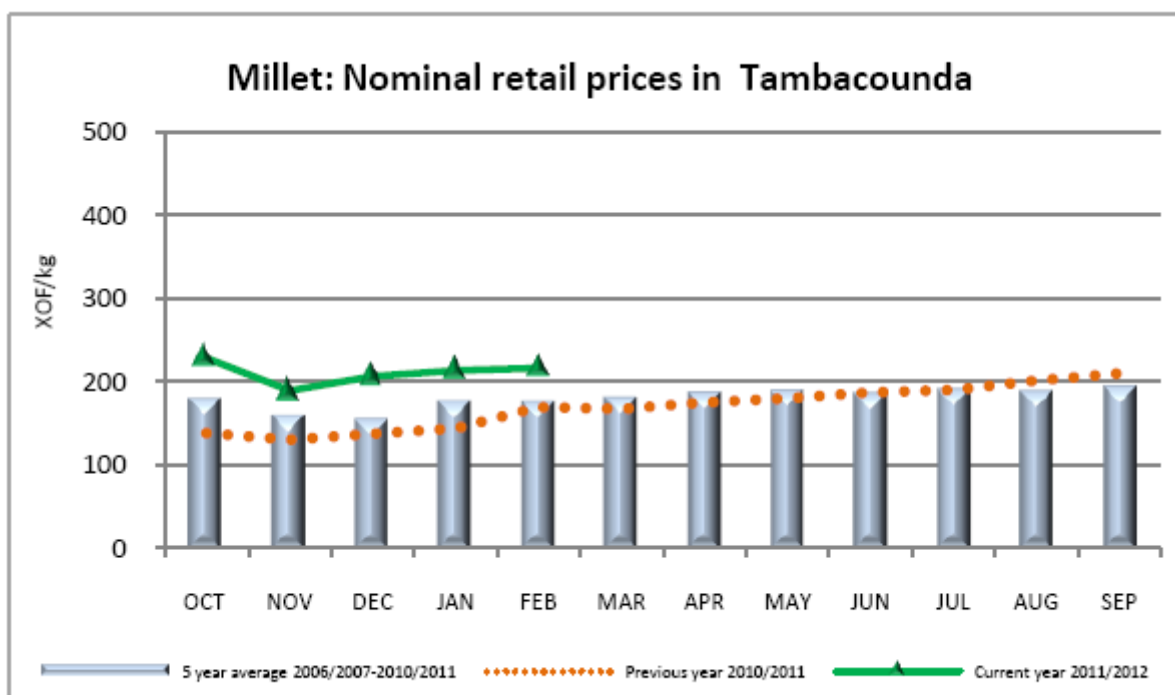
Rains in 2011 were irregular, late and short in the majority of the Sahel countries. The annual harvest statistics of Senegal show that many departments (geographical units in Senegal) are experiencing a food deficit of up to 31% in the production of cereals compared to the previous year. Alerted by these results, a rapid joint assessment was done by the main Senegalese government partners WFP, FAO and World Vision in mid-December, indicating that by the end of January 2012; already more than half of the rural households would have no cereals in stock and would need to obtain food from national and international markets.

Moreover, malnutrition rates are reaching 10.1%, slightly above the serious threshold standard of 10% according to UNICEF.

Region	Department			Population
	Deficit in cereal production	Very vulnerable (>35%)	Very + moderate vulnerable (>50%)	Very + moderate vulnerable
Kaolack	All	All		120,000
Kaffrine	All	Kaffrine Malem Hodar	All departments	100,000
Tamba	All	All	All	250,000
Kédougou	All	All	All	180,000
Kolda	All	Vélingara, Kolda	All	200,000
Ziguinchor	Bignona, Oussouye	All	All	150,000
Louga	All	All	All departments	250,000
Diourbel	All	All	Rural zone	100,000
<b>Total departments focused with &gt;50% very and moderate vulnerable</b>				1,350,000
<b>Total at national level</b>				2,500,000

Most lowland farmers and pastoralists usually experience annual food shortages or lean periods just before the rainy season. Drought is chronic in several locations in north and middle Senegal, and for the past two years, crop production has been below normal. The last major drought in 2010 killed around 35% of the livestock in the country. This year, due to the severity of the drought in 2011 and continuing into 2012, the majority of affected households are relying on an array of coping mechanisms that include men in the family seeking temporary work in the cities, households reducing the number and/or quality of meals, and households resorting to selling their assets including livestock, bicycles, radios and other movable items. This weakens their livelihoods status as they are reducing their future coping capacities and facing a precarious situation for the 2012/2013 agricultural year. The fragile food security situation of these populations and this year's drought is likely to aggravate the poor nutritional status that characterizes most lowland farmers and pastoralists in the affected areas. The charts below illustrate how current prices in affected areas are well above the five year average (source: FEWSNet [http://www.fews.net/docs/Publications/Senegal\\_2012\\_03\\_EN.pdf](http://www.fews.net/docs/Publications/Senegal_2012_03_EN.pdf).)





Meanwhile, the government, in collaboration with the UN, SRCS and other non-governmental organizations, launched a food security and nutrition assessment in order to identify the food and nutrition insecure and vulnerable populations resulting from food availability, accessibility and utilization problems, to establish the magnitude of the problem, and to determine and recommend appropriate interventions for the affected population. The results of the assessment are expected by the end of April 2012 and will inform the ongoing implementation of this appeal.

The drought has aggravated the food insecurity situation for particularly vulnerable households. This includes women-headed households, child-headed households, isolated individuals, and elderly people who have limited labour and coping capacity and fewer livelihoods opportunities.

High food prices this year are a major hurdle for poor households, limiting their access to food over the lean season. The poor harvest, combined with high food demand from Dakar, increased transportation costs, inflation and high agricultural input prices, has led to significant increases in the prices of food commodities (at least 80%). While these commodities seem to have stabilized, it remains at a very high price level at the time of writing this appeal<sup>1</sup>. There are no reported problems of food availability in major markets at the national level as most of the food required is available in the southern part of the country.

## Coordination and partnerships

SRCS works closely with the government's disaster management department as well as the Ministry of Agriculture, to provide relief assistance to the most vulnerable. SRCS is a permanent and active member of the food security and nutrition assessment team co-ordinated by the Government. This team regularly assesses malnutrition rates throughout the country, an activity that SRCS actively participates in.

Several UN agencies are present in Senegal, including Food and Agriculture Organization (FAO), United Nation's Children's Fund (UNICEF), World Food Programme (WFP), United Nations Population Fund (UNFPA), World Health Organization (WHO) and the United Nations Refugee Agency (UNHCR). WFP activities include school feeding programmes in targeted areas. Due to the food security crisis in Senegal, they are also undertaking targeted food distributions in the most affected areas, working with several organizations including SRCS. UNICEF is highly involved in nutrition interventions, and SRCS and the French Red Cross are in close contact with them regarding their upcoming nutrition programme in Diourbel. With the government declaring the emergency on 4 April, UN actors and non-governmental organizations such as Action Against Hunger (ACF), Oxfam, Catholic Relief Services (CRS), and World Vision are preparing to intervene in the different affected areas with food distributions; cash distributions; seeds and

<sup>1</sup> Source: FAO & FEWSNet

tools distributions; screening, referral and cure of severe acute malnutrition.

SRCS is represented through the IFRC's regional representation in the regional food security and nutrition working group and the regional nutrition working group (inter-agency working group), and is an active member of the national food security ad hoc working group.

## Red Cross and Red Crescent action

Following the initial food security assessments in six food insecure departments across three regions, the IFRC's Sahel Regional Representation Office in Dakar provided logistics and financial support to the National Society in the form of a DREF operation supporting six affected departments (Saint-Louis, Podor, Matam, Kanel and Dagan) and in arranging follow-up assessments that laid the groundwork to develop this appeal. DREF activities in northern Senegal have been fully implemented. This appeal seeks assistance to support the Senegalese population in areas not covered by the DREF and extends activities to deliver targeted assistance to the affected population. The SRCS is focusing on areas within the following 8 departments that are not already covered by other organizations and UN agencies interventions: Diourbel, Kaffrine, Tambacounda, Kédougou, Kolda, Kaolack, Fatick, and Louga. The table below describes the needs and subsequent interventions to be carried out by the National Society.

Cause of the intervention	Type of intervention	Primary target groups	Comments / response options
<b>Immediate action</b>			
Shortage of rice, millet, nuts, maize and beans.	Two months in-kind distribution of food and cash for work.	Household in severely affected villages.	Targeting the most vulnerable households in areas that are not yet covered in other agency responses.
Lack of seeds and agriculture tools for the next planting season in June.	Seed and agriculture tools distribution and cash for work to prepare lands.	Low-land farmers in affected villages.	All affected small agro pastoralists in affected villages.
Low food availability for remote communities.	Crop production improvement programme.	Irrigated farms in highlands.	Irrigation schemes. Dry farming techniques training. Fertilizer distribution support.
Further assessment are needed to monitor (after 2 months) the impact of UN agencies and NGO's food assistance in all departments; assessment the impact on nutrition; monitor the situation in the affected areas as well as in other districts and provinces in order to respond cases where the situation has not improved.			

## The needs

It is anticipated that food insecurity will intensify as the next rainy season approaches. The already scarce millet, rice, nuts, maize and beans stocks at household level will be depleted and, as is usual in the lean season, millet, rice and nuts prices will rise to even higher levels than the current prices and households will be relying on markets to meet 100% of their food needs. Casual labour will also be more difficult to find in the cities as the situation affects urban environments also. The situation will be particularly acute for villages with poor road access where it might be difficult to transport and deliver food assistance. Here cash transfers to bolster households' ability to purchase food from the market may be more effective. The result will be greater food insecurity in both extent (geographic spread) and severity (scale and impact). If assistance is not provided soon, the situation is likely to worsen. To compound the situation, communities have a shortage of seed stocks due to the previous poor harvest (normally, the community keeps part of the harvest for planting seeds), and consequently, affected farmers do not have the time, energy or resources to plant the next harvest. If the problem is not addressed, the negative impacts of the drought will extend well into 2013.



Source: [http://www.hewsworld.org/\\_download/SHC7Dec2010.pdf](http://www.hewsworld.org/_download/SHC7Dec2010.pdf)

An important element to take into consideration in this appeal strategy is that the SRCS is not addressing all the needs identified. However it is clear that in meeting the humanitarian needs that exist in the country a range of short, medium and longer term response options are viable:

1. Increase purchasing power of vulnerable households through cash transfers and through cash for work activities;
2. Support general food distribution during the lean (growing) season, corresponding to the planting season when people are busy preparing their land;
3. Support communities with seeds for agricultural (early) recovery and individuals with distribution of agricultural inputs and access to seed banks;
4. Support nutrition centres: screening, referral and cure as well as community sensitization (in Diourbel);
5. Supplementary food and animal food banks (such as wheat bran, cotton grain, mineral and multivitamin blocs).

Opportunities to reduce risk need to be embedded into any selected response options including making available improved seed varieties for cereals and beans for the upcoming 2012-2013 season for the most vulnerable. Improved seeds are produced in the different regions of Senegal by certified producers. As they are slightly more expensive than traditional varieties, most vulnerable farmers cannot access these without financial support and/or subsidies. Agricultural production could also be supported in the medium and longer term with key strengthening activities (e.g. intensified pasture production to supplement fodder production, irrigation techniques and food or animal product processing) and supporting diversified agricultural production through the use of varieties, species and time saving methods: rain fed crops of different cycle lengths, rotation of off-season crops, and exploitation of the seasonal (November to February) high water levels of the Senegal and Gambia rivers providing an opportunity for irrigated farming after the rainy season. Diversified livelihoods could also be explored in the longer term to improve the resilience and income sources to vulnerable households including the possible extension of poultry farming for egg production at the small-scale household level (promoted only on small-scale with no reliance on supplementary feed to poultry required).

## The proposed operation

The lean period runs across July to September in normal years. This year the affected population began relying on increased coping mechanisms as early as January. The activities planned in this appeal aim to mitigate the effects of the early food shortages and support early community resilience to face and mitigate related impact. Early interventions to support community coping mechanisms are designed to protect the targeted beneficiaries and their livelihoods.

**Beneficiary selection:** out of the 850,000 people directly affected by food insecurity, some 258,000 beneficiaries will be assisted in 30 areas (192 villages) within the Diourbel, Kaolack, Kaffrine, Tambacounda, Kédougou, Matam, Sédious, Kolda and Louga departments. Beneficiary selection was based on pre-defined criteria, with assistance focused on the most urgent cases and the following criteria:

- For cash transfers: food insecure households in with limited food stocks will be considered for cash support in urban areas where markets are functioning. Markets will be monitored closely in order to adjust the amount of cash transfers if deemed appropriate according to fluctuations in staple food prices.
- For the distribution of food: this support will focus on households who are in a precarious food security situation, with limited food stocks and purchasing power who cannot meet their needs beyond one or two months. These households do not have access to well functioning markets or are in a situation where markets are not appropriately supplied or where prices are still very volatile.

Elements taken into account for the selection criteria were:

- Household size and number of children under 5.
- The volume of food stocks in relation to the number of dependants relying on the stocks.
- Households where children are reduced to only one meal a day.
- The various income and food sources of the household.
- The number of people able to work in the household.

The selection criteria and appeal strategy are in line with the capacity of the National Society, In the framework of this operation, SRCS, supported by the IFRC, intends to mobilize up to 3,000 volunteers (already recruited and trained in emergency response) at a rate of 100 volunteers per department for 30 departments. The role of these volunteers, under the supervision of staff, will be to conduct the national distribution activities of food kits, agricultural kits and cash transfers.

A training of trainers will be conducted before the start of activities, with a meeting that will bring together regional and departmental technical managers, involving up to 50 people. This will be followed by a series of volunteer trainings, estimated to be 120 trainings for 25 volunteers per session. These trainings will focus on intervention norms (code of conduct emergency operations, SPHERE<sup>2</sup> standards), distribution activities and programme monitoring and evaluation.

The figures at or above 80% coverage reflect beneficiaries that are already benefiting from either cash or food distributions.

The appeal will focus on four strategic areas:

1. Cash transfer activities to increase the purchasing power and resilience of the most vulnerable. The cash for work activities are to include implementation of anti-erosion measures; rehabilitation of existing water harvesting and anti-erosion infrastructures; erosion protection of river/banks and trees; sand filling protection of lakes and ponds; stone lines; forest and pasture micro-catchments, agricultural micro-catchments, reforestation (dry fruit trees); fixation of dunes;
2. Food and seeds/plants distributions to support agricultural recovery for these households in the next farming seasons;
3. Support to health centres to provide appropriate outreach nutritional services to the affected communities through improved screening and detection of malnutrition;
4. Information dissemination and training support for emergency warning systems (EWS) and agricultural strengthening advice for at-risk communities.

The SRCS, with IFRC support, has developed an operational prioritization approach (available upon request) that will be implemented according to donor funding support for this appeal.

**Overall objective: to protect lives and improve livelihoods of vulnerable people until the next harvest period in 2012.**

#### **Relief distributions (food and non-food items)**

**Outcome: Immediate needs of 43,000 households (258,000 beneficiaries) in Kédougou, Kaffrine, Kaolack, Tambacounda, Matam, Sédhiou, Louga, Fatik, and Kolda are met for 3 months through food and cash transfer distributions.**

<b>Outputs</b>	<b>Activities planned</b>
Appropriate food rations are distributed to 30,000 of the most vulnerable households for 3 months.	<ul style="list-style-type: none"> <li>• Develop beneficiary identification and targeting strategy and registration system to deliver intended assistance;</li> <li>• Local procurement , storage, transport and distribution of 80 tonnes of maize, 60 tonnes of millet and of 40 tonnes of beans;</li> <li>• Monitor distribution of food relief supplies to 30,000 households and control supply movements from point of dispatch to end user;</li> <li>• Monitor and evaluate the relief activities and provide reporting on relief distributions;</li> </ul>

<sup>2</sup> Humanitarian charter and minimum standards in disaster response

Cash transfers are provided to 13 000 of the most vulnerable households for 3 months	<ul style="list-style-type: none"> <li>• Develop beneficiary identification and targeting strategy and registration system to deliver intended assistance;</li> <li>• Assess and partner with relevant stakeholders including financial institutions to deliver cash transfers;</li> <li>• Disburse funds to 13,000 most vulnerable households. Each household will receive CHF 150 for the 3 months.</li> <li>• Monitor and evaluate cash transfer activities.</li> </ul>
--	--

### Disaster risk reduction (DRR), food security and livelihoods

**Outcome: To contribute to reducing the effects of food insecurity of up to 70,000 vulnerable people through increasing agricultural production and reducing risk through environmental protection measures in Kaffrine, Tambacounda, Kaolak, Matam, Kédougou and Kolda regions.**

Outputs	Activities
Cash for work in 15 departments to carry out DRR and environmental projects for 1,500 persons.	<ul style="list-style-type: none"> <li>• Train volunteers, foremen and supervisors;</li> <li>• Equip villages with soil working tools;</li> <li>• Implement and supervise cash for work activities;</li> <li>• Supply lunch for all "cash for work" workers everyday;</li> <li>• Monitor and evaluate cash transfer actions and their impact on the harvest;</li> <li>• Evaluate cash for work impact on beneficiaries.</li> </ul>
74 villages in six regions will receive cereal donations to seed banks to have cereals to sell at village level and to replenish their accounts (10 tonnes for the new ones and 5 tonnes for existing seed banks).	<ul style="list-style-type: none"> <li>• Identify villages with seed banks that need to be reinforced;</li> <li>• Assist in the creation of seed banks;</li> <li>• Organize training/refreshing sessions for the management committee of the seed banks;</li> <li>• Select the existing seed banks to reinforce;</li> <li>• Carry out monitoring and evaluation activities of the cereal management by the seed bank.</li> </ul>
The most vulnerable 4,800 households in 120 communities have received improved seeds (15 kg) for the forthcoming seasons.	<ul style="list-style-type: none"> <li>• Provide improved seeds to 4,800 households from certified seed producers;</li> <li>• Identify 40 most vulnerable households in each of the 120 communities;</li> <li>• Implement a mechanism to distribute seeds (training of volunteers);</li> <li>• Identify certificated improved seed producers;</li> <li>• Train farmers on the use of seeds of improved varieties;</li> <li>• Monitor and evaluate distribution activities.</li> </ul>
Replanted maize, millet and ground nuts are promoted in 90 villages in 6 regions.	<ul style="list-style-type: none"> <li>• Identify short cycle maize;</li> <li>• Identify households with cropping potential in rural zones;</li> <li>• Train 30 volunteers in 20 departments on replanted maize;</li> <li>• Disseminate replanted maize;</li> <li>• Test plots of replanted maize;</li> <li>• Monitoring and evaluation of replanted maize activities.</li> </ul>
Out of the 120 communities, 10 are identified for long term interventions.	<ul style="list-style-type: none"> <li>• Conduct assessments for long-term support needs;</li> <li>• Identify the most vulnerable villages with the highest potential in agricultural production increase through long-term food security interventions;</li> <li>• Support in developing a concept note for a long-term food security project for the 10 villages.</li> </ul>

## Emergency health

**Outcome: To improve the nutritional status of 10,000 children under 5 and pregnant / breast feeding women in seven departments of Kaffrine, Tambacounda, Kaolak, Matam, Kédougou, Diourbel and Kolda.**

Outputs	Activities planned
Assist in the screening and referral to existing health facilities in 100 villages of malnourished children under 5 and pregnant and breast feeding women until the end of the lean period (September 2012).	<ul style="list-style-type: none"> <li>• Train 60 volunteers per department (some 420 out of the planned total of some 3,000 volunteers) on malnutrition screening, delivery of messages on nutrition and health;</li> <li>• Disseminate key messages: best practices about nutrition and their proper use; screening of malnourished children and pregnant and breast feeding women; use of ORS; and hygiene promotion;</li> <li>• Activities to support nutritional centres and referral centres where possible.</li> </ul>

## Communications – Advocacy and Public information

Maintaining a steady flow of timely and accurate information between the field and other major stakeholders is vital for fundraising, advocacy and maintaining the profile of the emergency operations. This flow will be maintained between those working in the field and other stakeholders, including the media and donors, to promote greater quality, accountability, and transparency. This will support the objectives of this appeal, e.g. to increase the profile, the funding mechanisms for SRCS and IFRC, and provide a platform on which to advocate in the interests of vulnerable people.

Donors and National Societies will receive information and materials they can use to promote the operation. Relevant information and advocacy materials, including audio-visual products, will be channelled through IFRC's public website – [www.ifrc.org](http://www.ifrc.org).

Activities will include the following:

- Produce press releases, news stories and beneficiary case studies.
- Engage proactively with media (national, and international) to highlight the needs of the food insecurity-affected people and to profile the response of the Red Cross. This will include the use of established IFRC social media tools.
- Develop media packages, including facts and figures, issue briefs and audiovisual products for distribution to partner national societies, other partner organizations and media.
- Develop and produce communications products that highlight achievements of the operation.
- Support field visits by communications colleagues from partner national societies and donor agencies.
- Support programme teams in designing and producing project-specific materials, including forms, banners, brochures, posters and signage.
- Support programme teams to ensure consistent engagement with beneficiaries as part of IFRC's commitment to greater accountability to affected communities.

## Capacity of the National Society

SRCS has long-established expertise in relief operations and in particular with food security operations (2003, 2005 and 2007). The SRCS has well-functioning branches in all 14 regions, and a very experienced disaster manager based in Dakar. The SRCS Secretary General's extensive food security knowledge and experience will prove vital for supervising, directing, and monitoring this operation. SRCS has approximately 30,000 volunteers who will support the operation in the affected areas.

## Capacity of the IFRC

This food security intervention will not create a parallel structure but rather will reinforce existing National Society capacities. IFRC's Sahel regional representation has supported the SRCS in planning and organizing the emergency response. An operations coordinator will also be recruited and based in Dakar to ensure proper coordination and support to the regional office and the National Society. The regional food security, nutrition and livelihoods delegate will also support the long-term food security programmes. The National Society will have the operational lead of the interventions and in-country capacities will also be reinforced and supported through short-term deployments (RDRT, partner National Societies or IFRC staff).

Both the National Society and the Sahel regional representation will receive additional technical support from IFRC's Africa zone office and the Secretariat in Geneva. Technical capacities available include disaster management, livelihoods and food security, health and care, water and sanitation, finance and administration, communications as well as resource mobilization and planning, monitoring, evaluation and reporting (PMER).

**Budget summary**

See attached budget (Annex 1) for details.

Jagan Chapagain  
Acting Under Secretary General  
Programme Services Division

Bekele Geleta  
Secretary General

---

## Contact information

### For further information specifically related to this operation please contact:

- **National Society:** Mamadou Sonko, Secretary General, phone: (office) +221.33.823.39.92; Mobile: +221.77.579.00.56; email: [sonkomala@yahoo.fr](mailto:sonkomala@yahoo.fr)
- **IFRC regional office:**
  - Momodou Lamin Fye, Regional Representative, Dakar phone:(Office) +221.33.869.36.41; (Mobile) +211.77.332.56.72; email: [momodoulamin.fye@ifrc.org](mailto:momodoulamin.fye@ifrc.org)
  - Nathalie Bonvin, Regional Food Security, Nutrition and Livelihoods delegate phone:(Office) +221.33.869.36.33; Mobile: +221.77.644.38.38; email: [nathalie.bonvin@ifrc.org](mailto:nathalie.bonvin@ifrc.org),
- **IFRC Zone:** Operations coordinator: Daniel Bolanos, Disaster Management Coordinator, Africa; phone: +254 (0)731 067 489; email: [daniel.bolanos@ifrc.org](mailto:daniel.bolanos@ifrc.org);
- **IFRC Geneva:** Christine South, Operations Support; phone: +41.22.730.45 29; email: [christine.south@ifrc.org](mailto:christine.south@ifrc.org)
- **IFRC Regional Logistics Unit (RLU):** Ari Mantyaara Logistics Coordinator, Dubai; phone +971 50 4584872, Fax +971.4.883.22.12, email: [ari.mantyaara@ifrc.org](mailto:ari.mantyaara@ifrc.org)

### For Resource Mobilization and Pledges:

- **IFRC West and Central Africa hub:** Elisabeth Seck, Resource Mobilization Officer, Dakar; phone: +221 33 869 36 60; mobile: +221 77 450 59 49; email: [elisabeth.seck@ifrc.org](mailto:elisabeth.seck@ifrc.org)

### For Performance and Accountability (planning, monitoring, evaluation and reporting):

- **IFRC Zone:** Robert Ondrusek, PMER/QA Delegate, Africa phone: +254 731 067277; email: [robert.ondrusek@ifrc.org](mailto:robert.ondrusek@ifrc.org)



**Click here**

1. **Emergency Appeal budget and map [below](#)**
2. **[Return](#) to the title page**

---

## How we work

All IFRC assistance seeks to adhere to the [Code of Conduct for the International Red Cross and Red Crescent Movement and Non-Governmental Organizations \(NGOs\) in Disaster Relief](#) and the [Humanitarian Charter and Minimum Standards in Disaster Response \(Sphere\)](#) in delivering assistance to the most vulnerable.

The IFRC's vision is to inspire, encourage, facilitate and promote at all times all forms of humanitarian activities by National Societies, with a view to preventing and alleviating human suffering, and thereby contributing to the maintenance and promotion of human dignity and peace in the world.

[www.ifrc.org](http://www.ifrc.org)  
Saving lives, changing minds.



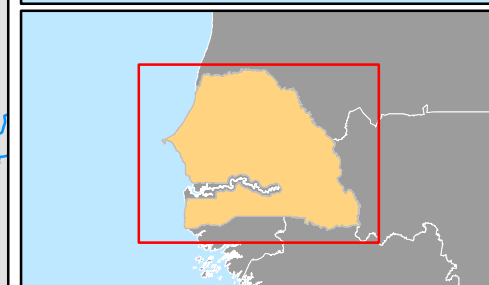
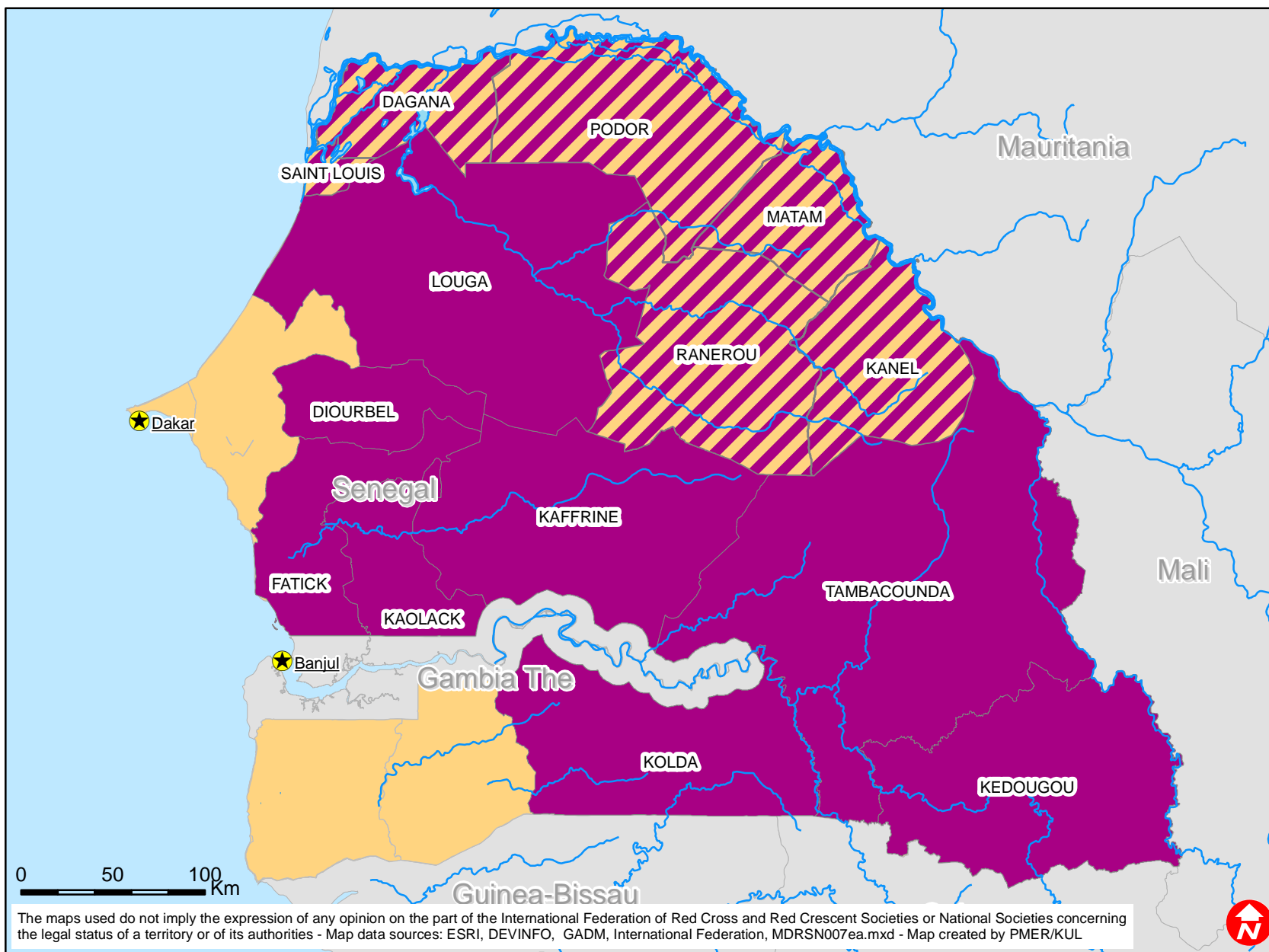
The IFRC's work is guided by [Strategy 2020](#) which puts forward three strategic aims:

1. Save lives, protect livelihoods, and strengthen recovery from disaster and crises.
  2. Enable healthy and safe living.
  3. Promote social inclusion and a culture of non-violence and peace.
-

Budget Group	Multilateral Response	Inter-Agency Shelter Coord.	Bilateral Response	Appeal Budget CHF
Shelter - Relief				0
Shelter - Transitional				0
Construction - Housing				0
Construction - Facilities				0
Construction - Materials				0
Clothing & Textiles				0
Food	212,000			212,000
Seeds & Plants	159,120			159,120
Water, Sanitation & Hygiene				0
Medical & First Aid				0
Teaching Materials	14,386			14,386
Utensils & Tools	372,100			372,100
Other Supplies & Services				0
Emergency Response Units				0
Cash Disbursements	1,950,000			1,950,000
<b>Total RELIEF ITEMS, CONSTRUCTION AND SUPPLIES</b>	<b>2,707,606</b>	<b>0</b>	<b>0</b>	<b>2,707,606</b>
Land & Buildings				0
Vehicles Purchase	99,000			99,000
Computer & Telecom Equipment	48,942			48,942
Office/Household Furniture & Equipment				0
Medical Equipment				0
Other Machinery & Equipment				0
<b>Total LAND, VEHICLES AND EQUIPMENT</b>	<b>147,942</b>	<b>0</b>	<b>0</b>	<b>147,942</b>
Storage, Warehousing				0
Distribution & Monitoring	57,500			57,500
Transport & Vehicle Costs	153,000			153,000
Logistics Services				0
<b>Total LOGISTICS, TRANSPORT AND STORAGE</b>	<b>210,500</b>	<b>0</b>	<b>0</b>	<b>210,500</b>
International Staff	117,819			117,819
National Staff				
National Society Staff	24,000			24,000
Volunteers	84,300			84,300
<b>Total PERSONNEL</b>	<b>226,119</b>	<b>0</b>	<b>0</b>	<b>226,119</b>
Consultants				0
Professional Fees				0
<b>Total CONSULTANTS &amp; PROFESSIONAL FEES</b>	<b>0</b>	<b>0</b>	<b>0</b>	<b>0</b>
Workshops & Training	166,833			166,833
<b>Total WORKSHOP &amp; TRAINING</b>	<b>166,833</b>	<b>0</b>	<b>0</b>	<b>166,833</b>
Travel	10,000			10,000
Information & Public Relations	12,000			12,000
Office Costs	17,000			17,000
Communications	12,000			12,000
Financial Charges	4,000			4,000
Other General Expenses				0
Shared Support Services	22,061			22,061
<b>Total GENERAL EXPENDITURES</b>	<b>77,061</b>	<b>0</b>	<b>0</b>	<b>77,061</b>
Partner National Societies				0
Other Partners (NGOs, UN, other)				0
<b>Total TRANSFER TO PARTNERS</b>	<b>0</b>	<b>0</b>	<b>0</b>	<b>0</b>
Programme and Supplementary Services Recovery	229,844	0	0	229,844
<b>Total INDIRECT COSTS</b>	<b>229,844</b>	<b>0</b>	<b>0</b>	<b>229,844</b>
<b>TOTAL BUDGET</b>	<b>3,765,905</b>	<b>0</b>	<b>0</b>	<b>3,765,905</b>
<b>Available Resources</b>				
Multilateral Contributions				0
Bilateral Contributions				0
<b>TOTAL AVAILABLE RESOURCES</b>	<b>0</b>	<b>0</b>	<b>0</b>	<b>0</b>
<b>NET EMERGENCY APPEAL NEEDS</b>	<b>3,765,905</b>	<b>0</b>	<b>0</b>	<b>3,765,905</b>



# Senegal: Food insecurity



-  SRCS/ IFRC targeted regions
-  DREF-supported departments

