

www.ifrc.org  
Saving lives,  
changing minds.

## Disaster relief emergency fund (DREF) Chad: Flood

 International Federation  
of Red Cross and Red Crescent Societies

**DREF operation n° MDRTD010**  
**GLIDE n° FL-2012-000151-TCD**  
**11 September 2012**

The International Federation of Red Cross and Red Crescent (IFRC) Disaster Relief Emergency Fund (DREF) is a source of un-earmarked money created by the Federation in 1985 to ensure that immediate financial support is available for Red Cross and Red Crescent emergency response. The DREF is a vital part of the International Federation's disaster response system and increases the ability of National Societies to respond to disasters.

**CHF 125,920 has been allocated from the IFRC's Disaster Relief Emergency Fund (DREF) to support the National Society in delivering immediate assistance to some 5,000 beneficiaries. Unearmarked funds to repay DREF are encouraged.**

**Summary:** Since mid July 2012, torrential rains brought heavy downpours triggering floods in several regions of Chad on 6 and 7 August. The districts of Rig Rig and Mangalmé were among the severely hit areas. The flood caused damage in the semi-desert area of Rig Rig where rains are very rare. Detailed assessments revealed 1,150 persons in Rig Rig, 600 in Goz Beida and 850 in Mangalmé were affected and in need of household non-food items. The Chad Red Cross volunteers have supported in evacuations and carried out damage and needs assessments. A meeting was also held with the local authorities to discuss remaining needs of the most vulnerable.



**Flood-affected persons in Rig Rig have lost 220 houses including two wells and two mosques. The rain, which lasted for 24 hours, plunged drought affected families into further**

This operation is providing affected families with NFIs such as plastic sheeting, jerry cans, buckets, blankets, mosquito nets and soap to enable them to cope with the current situation. The operation will provide refresher training to volunteers on undertaking sanitation campaigns in the affected areas. To contribute to the reduction of epidemic transmission, public latrines will be built and equipped with sanitation kits in the affected areas. Since the area of Rig Rig is targeted by the food distributions as part of the ongoing work of the National Society and WFP, the NFIs have already been distributed in order to rapidly reduce the vulnerability of the affected persons. This DREF operation will also enable a response preparedness operation for volunteers as the rains are predicted to continue until November.

This operation is expected to be implemented over three months, and will therefore be completed by 7 December 2012; a Final Report will be made available three months after the end of the operation (by 7 March 2013).

[<click here for the DREF budget; here for contact details; here to view the map of the affected area>](#)

## The situation

Rig Rig, an area located approximately 420 kilometers from the capital N'Djamena experienced unprecedented rainfall between 6 and 7 August. The rains lasted 24 hours and accumulated 200 millimeters; leading to destruction of houses and loss of livestock, food and non food items. Field reports from assessments estimate a total of 220 houses were destroyed and that several hundred livestock were also lost. The rains led to the partial destruction of two important wells in the area where the majority of the population fetch water. Authorities set in place immediate measures restricting the use of water from the well; however the main water network provider is currently unable to meet the water needs for the district.

The area of Rig Rig is a semi-desert area, where majority of the population depends mainly on trade, animal herding and marshland activities. It is an area where food crises and high rates of malnutrition are recurrent. The floods have further increased the vulnerabilities of the communities.

In Goz Beida, a town located in the east of Chad, heavy rain followed by a storm destroyed 109 homes and damaged a further 227, affecting a total of 600 persons. The district of Mangalmé in the region of Guerra also received heavy rains and floods affected 850 persons.

District	# of families affected	# families requiring assistance
Rig Rig	2,467	1,150
Mangalmé	1,230	850
Goz Beida	1,085	600
Total	4,782	2,600

## Coordination and partnerships

The local committees of the Chad Red Cross in the affected areas are working in collaboration with the authorities. Red Cross volunteers are the key disaster responders in the regions, providing search and rescue support and collecting data as they are an integral part of the affected communities. There are currently no other humanitarian agencies providing support to the flood affected persons.

At the national level, the National Society regularly attends meetings organized by the authorities and United Nations systems. Information on the activities of the Red Cross will be provided during these meetings.

## Red Cross and Red Crescent action

Chad Red Cross volunteers responded immediately to support the affected persons, in terms of supporting with evacuations and search and rescue services, followed by building sandbag barriers in some of the communities. Volunteers also provided rapid hygiene promotion messages immediately after the floods, while undertaking damage and needs assessments.

## The needs

Some of the affected persons in the areas of Rig Rig and Goz have moved into school and governmental buildings which are being used as temporary shelters. Meanwhile in Mangalmé, a large number of affected people found temporary refuge in the market. The assessment teams of the Red Cross of Chad identified these as the most vulnerable people in need of assistance.

## The proposed operation

To address the needs, a total of 75 volunteers are being trained to launch hygiene promotion campaigns in the affected areas. As the need to provide families with non-food items is urgent, the Red Cross of Chad has already procured plastic sheeting, blankets, mosquito nets, soap and jerry cans in-country and distributed to beneficiaries. Other identified needs include:

- Procurement and distribution of non-food items to 2,600 (520 families) persons in the three affected areas
- Training of 75 volunteers to disseminate emergency health and hygiene promotion messages
- Building of three public latrines in the affected areas and provision of sanitation kits

### Relief distributions (basic non-food items)

**Outcome:** The immediate needs of 1,000 families affected are met through the distribution of essential household items

**Outputs (expected results):**  
1,000 families are provided with appropriate non food items

- Activities planned:**
- Selection and verification of 1,000 families.
  - Develop plan of action, with community participation, in planning and distribution of relief items.
  - Coordinate with local authorities, based on their accurate beneficiary registration for relief distribution
  - Distribute plastic sheeting, sleeping mat, mosquito net, and blankets to 1,000 families.
  - Monitor and evaluate relief activities and provide reporting on relief distributions.

### Emergency health

**Outcome:** The immediate threat to health status for 1,000 families is reduced for targeted communities

**Outputs (expected results):**  
Increased awareness and prevention of waterborne diseases is ensured through an information campaign in targeted communities

- Activities planned:**
- Conduct epidemic control (ECV) and PHAST trainings for targeted communities and 75 volunteers
  - Carry out preventive health and hygiene promotion talks in targeted communities
  - Print and distribute information, education and communication materials on epidemic control.

### Water, sanitation, and hygiene promotion

**Outcome:** The risk of waterborne and water related disease are reduced for 1,000 families through the provision of water purification items and adequate sanitation as well as hygiene promotion.

**Outputs (expected results):**  
Increased awareness and prevention of waterborne diseases is ensured through a campaign in targeted communities

- Activities planned:**
- Conduct door to door sensitization campaigns to promote individual and collective hygiene as means of avoiding the spread of water borne disease.
  - Distribute jerry cans, soap and cleaning products to 1,000 families
  - Continue monitoring and assess the situation in the affected areas as well as in other parts of the country.
  - Build 3 public latrines

### Logistics

All the non-food items have already been distributed from National Society and ICRC pre-positioned stock. The DREF operation will replenish the distributed stock.

## Contact information

### For further information specifically related to this operation please contact:

- **Red Cross of Chad:** Bongor Zam Barminas, Secretary General; Tel: +235.66.29.88.82; Email: [croixrouge.tchad@yahoo.fr](mailto:croixrouge.tchad@yahoo.fr)
- **IFRC Chad Representation:** Belly Mamadou Diallo, Country Representative; Tel: +235.66.27.84.84; Email: [belly.diallo@ifrc.org](mailto:belly.diallo@ifrc.org)
- **IFRC Regional Representation:** Momodou Lamin Fye, Regional Representative; Tel: +221 33 869 36 41; Email: [momodoulamin.fye@ifrc.org](mailto:momodoulamin.fye@ifrc.org)
- **IFRC Africa Zone DMU:** Daniel Bolanos, Disaster Management Coordinator; Tel: +254 731 067 489; Email: [daniel.bolanos@ifrc.org](mailto:daniel.bolanos@ifrc.org)
- **IFRC Geneva:** Christine South, Operations Quality Assurance Senior Officer; Tel: +41 22 730 4529; Email: [christine.south@ifrc.org](mailto:christine.south@ifrc.org)

### For Resource Mobilization and Pledges:

- **IFRC Africa Zone RM:** Loïc de Bastier, Resource Mobilisation Coordinator; Tel: +251 93 003 4013; Email: [loic.debastier@ifrc.org](mailto:loic.debastier@ifrc.org)

### For Performance and Accountability (planning, monitoring, evaluation and reporting)

- **IFRC Africa Zone PMER:** Robert Ondrusek, PMER / QA Delegate; Tel: +254 731 067 277; Email: [robert.ondrusek@ifrc.org](mailto:robert.ondrusek@ifrc.org)
- 

## How we work

All IFRC assistance seeks to adhere to the Code of Conduct for the International Red Cross and Red Crescent Movement and Non-Governmental Organizations (NGO's) in Disaster Relief and the Humanitarian Charter and Minimum Standards in Humanitarian Response (Sphere) in delivering assistance to the most vulnerable.

The IFRC's vision is to inspire, encourage, facilitate and promote at all times all forms of humanitarian activities by National Societies, with a view to preventing and alleviating human suffering, and thereby contributing to the maintenance and promotion of human dignity and peace in the world.

[www.ifrc.org](http://www.ifrc.org)

**Saving lives, changing minds.**



The IFRC's work is guided by Strategy 2020 which puts forward three strategic aims:

1. Save lives, protect livelihoods, and strengthen recovery from disaster and crises.
2. Enable healthy and safe living.
3. Promote social inclusion and a culture of non-violence and peace.

# DREF OPERATION

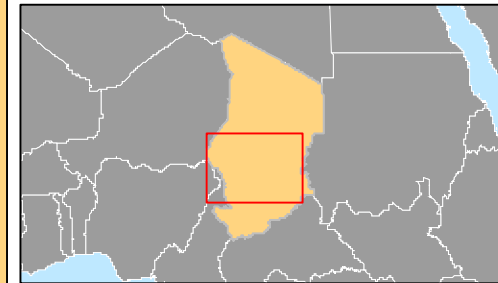
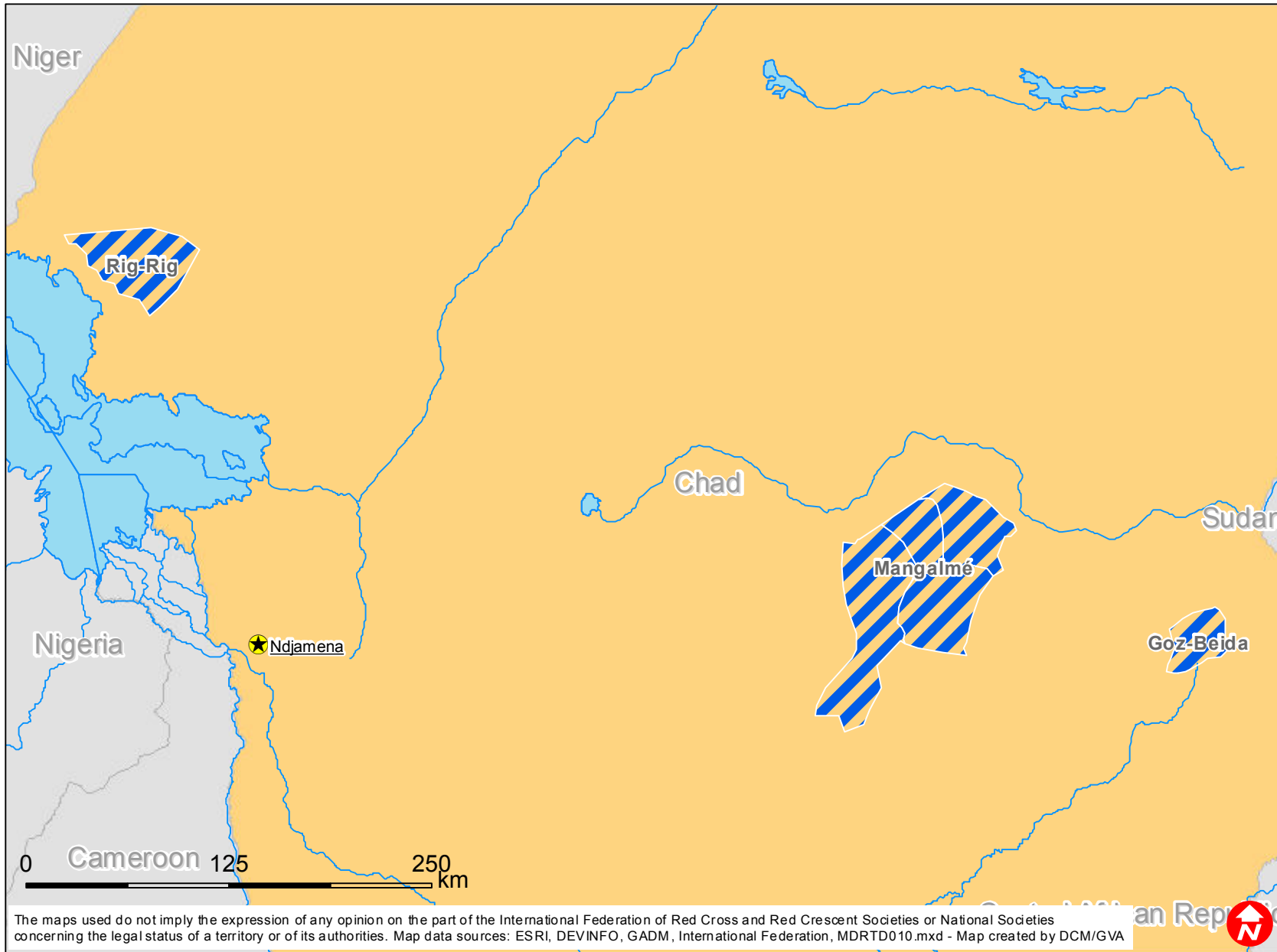
11-09-12


Chad Floods: (MDRTD010)

<b>Budget Group</b>	<b>DREF Grant Budget CHF</b>
Shelter - Relief	28,000
Shelter - Transitional	29,126
Construction - Housing	
Construction - Facilities	
Construction - Materials	
Clothing & Textiles	
Food	
Seeds & Plants	
Water, Sanitation & Hygiene	11,650
Medical & First Aid	
Teaching Materials	
Utensils & Tools	
Other Supplies & Services	8,913
Cash Disbursements	
<b>Total RELIEF ITEMS, CONSTRUCTION AND SUPPLIES</b>	<b>77,689</b>
Land & Buildings	
Vehicles	
Computer & Telecom Equipment	
Office/Household Furniture & Equipment	
Medical Equipment	
Other Machinery & Equipment	
<b>Total LAND, VEHICLES AND EQUIPMENT</b>	<b>0</b>
Storage, Warehousing	
Distribution & Monitoring	1,500
Transport & Vehicle Costs	4,767
Logistics Services	
<b>Total LOGISTICS, TRANSPORT AND STORAGE</b>	<b>6,267</b>
International Staff	12,000
National Staff	485
National Society Staff	2,816
Volunteers	10,125
<b>Total PERSONNEL</b>	<b>25,426</b>
Consultants	
Professional Fees	
<b>Total CONSULTANTS &amp; PROFESSIONAL FEES</b>	<b>0</b>
Workshops & Training	2,184
<b>Total WORKSHOP &amp; TRAINING</b>	<b>2,184</b>
Travel	
Information & Public Relations	2,427
Office Costs	1,223
Communications	1,017
Financial Charges	2,000
Other General Expenses	
Shared Office and Services Costs	
<b>Total GENERAL EXPENDITURES</b>	<b>6,668</b>
Partner National Societies	
Other Partners (NGOs, UN, other)	
<b>Total TRANSFER TO PARTNERS</b>	<b>0</b>
Programme and Services Support Recovery	7,685
<b>Total INDIRECT COSTS</b>	<b>7,685</b>
<b>TOTAL BUDGET</b>	<b>125,920</b>



# Chad: Floods



 Affected areas

