

www.ifrc.org  
Saving lives,  
changing minds.

## Emergency appeal Zimbabwe: Food Insecurity

 International Federation  
of Red Cross and Red Crescent Societies

**Emergency appeal n° MDRZW006  
19 December 2012**

**This Emergency Appeal seeks CHF 1,290,342 in cash, kind, or services to support the Zimbabwe Red Cross Society (ZRCS) to assist 10,000 beneficiaries for 9 months, and will be completed by September 2013. A Final Report will be made available by December 2013 (three months after the end of the operation).**

**CHF 120,000 has been allocated from the International Federation of Red Cross and Red Crescent (IFRC) Disaster Relief Emergency Fund (DREF) to support this operation. Unearmarked funds to replenish DREF are encouraged.**



**Failure of seasonal rainfall has resulted in increased food insecurity and lack of safe water for both people and livestock/ZRCS photo**

This Emergency Appeal seeks to support the National Society to assist vulnerable people in Zimbabwe who are food insecure as a result of a drought that affected the country in the 2011/2012 main agricultural season. The situation requires timely support of food aid and rehabilitation of water points to reduce the adverse effects of reduced nutritional intake, reinforce coping mechanisms, and increase coverage and access to clean and safe water in the form of sanitation and hygiene promotion activities. The planned intervention also includes agricultural inputs for small-scale gardening, combined with the provision of agricultural tools and training.

**Summary:** The declared acute food insecurity crisis in Zimbabwe is now reaching its peak period with an anticipated 1.6 million people in need of food assistance. Despite interventions from the authorities and the international community, gaps still remain and many families in need have still not been assisted.

A joint assessment organized by the Government of Zimbabwe and humanitarian organizations led to the Zimbabwe Rural Livelihood Assessment May 2012 report that stated an anticipated 1.6 million people in the rural areas of Zimbabwe would be in need of food assistance in the period leading up to the April 2013 harvest. Following this report the Government of Zimbabwe declared the country food insecure, and several food security initiatives were launched by Government of Zimbabwe, the Red Cross, the United Nations and other humanitarian organizations, including a large scale government micro financing initiative and significant food distribution by WFP.

Despite the coordinated efforts of the humanitarian community, many families have still not been reached. The Zimbabwe Red Cross Society has identified vulnerable communities in the district of Nkayi, in the Matebeleland North Province in urgent need of relief food and recovery assistance.

This appeal will support the targeted beneficiaries with immediate food assistance, support for improved food production mechanisms (including inputs such as seeds, fertilizer, tools combined with training inputs), improved

access to safe water and basic sanitation facilities and initiatives to strengthen the community resilience to better respond to future food crises.

## The situation

Zimbabwe is primarily an agro-based economy and crop production is the main form of livelihood for the rural population in the country. The agricultural sector has been performing poorly for over a decade due to poor rains, structural challenges, and consecutive years of drought, and as a consequence poor harvests. It has been more than a decade since the country recorded a bumper harvest. Consecutive droughts and poor growing seasons have weakened household resilience to food insecurity shocks and the communities have limited coping mechanisms as most households do not have livestock or other assets that can be disposed to purchase food for household consumption.

Livestock has been impacted by the poor rains, with severe shortages of pasture in the drier parts of the country, specifically Masvingo, Matebeleland North and South Provinces. Water shortages have also affected livestock production as livestock travel long distances to water sources which are drying up. Boreholes in most districts are broken down and in need of rehabilitation.

There is a limited availability of cash in the rural economy - a result of industry being below 30% capacity and the introduction of the multiple currency economy. This has also made it difficult for households to purchase food for consumption from retail shops where stocks are available. The affected households are relying on negative coping strategies such as skipping meals and food rationing. School dropout rates have also increased and this has been attributed to food scarcity.

The government of Zimbabwe and humanitarian agencies conducted a joint assessment, resulting in the Rural Livelihoods May 2012 Assessment Report (Zimbabwe Vulnerability Assessment Committee (ZIMVAC) 2012). The report established that a growing food insecurity crisis would peak in December 2012 – March 2013 with an estimated 1,667,518 people being in need of food assistance. The government has since declared an emergency food crisis. A large percentage of rural farmers continue to depend on Government or NGO-run distribution programmes (ZIMVAC 2012).

The level of food insecurity for 2012/2013 is a 7% increase from the 2011/2012 season where 12% of the rural population was food insecure. The UN-OCHA CAP Mid Year Review (2012), reports that maize production declined by 33%, with an estimated 43% of the planted crops being recorded as ruined. The report states that chronic and acute child malnutrition stand at 32% and 3% respectively. It is important to note that these numbers exclude the population living in urban areas who are also constrained by high levels of unemployment and limited access to cash. A total of 146,141 metric tonnes of cereal will be required to cover the food deficit that the country is experiencing. The food insecurity situation is mainly concentrated in the southern parts of Zimbabwe. (ZIMVAC, 2012).

The provinces with the highest numbers of food insecure population are Matebeleland North, Masvingo, Midlands and Matebeleland South (see table below). Matebeleland North shows a sharp increase in the percentage population that is food insecure which stands at 30% compared to 16% in the 2011/2012 consumption year. Nkayi is one of the worst affected districts in terms of food security in Zimbabwe. ZRCS will effectively implement the operation in Nkayi as they have a strong volunteer base and historical relationship with stakeholders from the previous programmes.

Province	% Food Insecurity 2011/12	% Food Insecurity 2012/13	Food Insecure Population 2012/13
Manicaland	14	15	209,364
Mashonaland Central	10	17	198,065
Mashonaland East	8	10	113,878
Mashonaland West	7	16	159,502
Masvingo	16	28	378,046
Matabeleland North	16	30	155,837
Matabeleland South	16	30	213,338
Midlands	11	17	217,178
<b>National</b>	<b>12</b>	<b>19</b>	<b>1,667,618</b>

A number of factors account for the food insecurity situation including limited access to certified seeds and fertilizers, combined with a prolonged mid-season dry spell and drought experienced in the 2011/2012 agricultural season. The country has also been affected by the negative effects of climate change and farmers are having difficulty in their planning. Low moisture content is one of the challenges commonly cited as contributing to poor agricultural performance by most farmers.

Access to safe water is a challenge with an estimated one third of rural population consuming unprotected water risking contraction of waterborne diseases. A number of cases of typhoid and cholera outbreaks have been reported highlighting the dire need for water and sanitation interventions.

## Coordination and partnerships

The government through the Grain Marketing Board (GMB) is implementing a Grain Loan Scheme intervention where selected households receive 50kg maize bag per month. The beneficiaries are expected to reimburse the Grain Marketing Board at the next harvest. The scheme is however unable to reach all food insecure households. The conditionality of the scheme also requires that a household harvest enough grain to repay the Grain Marketing Board with the household remaining with enough grain for consumption.

ZRCS works and maintains relationships with various technical partners including FAO, WFP, the Ministry of Agriculture's AGRITEX department, Ministry of Health and child welfare and the Civil Protection Unit (CPU). WFP is targeting 1.6 million people in the 36 affected districts. A total budget of USD 238 million is required to meet the need however the budget is only 52% funded.

The ZRCS is currently implementing a WFP funded project in Bindura district supporting almost 4,000 malnourished people on anti-retroviral treatment (ART), malnourished children, and household members.

The AGRITEX department has been working with ZRCS in supporting communal farmers with training in improved farming. ZRCS also participates and is a member of various working groups that coordinate humanitarian interventions such as the Food Aid Working Group, Nutrition Cluster and the Agriculture Coordination Working Group (ACWG). At provincial and district levels, ZRCS is a member and participates in Provincial and District Disaster and Development Committees, which coordinate planning and support for communities.

ZRCS has been implementing agriculture recovery projects for nearly a decade and over the years has built strong partnerships as well as experience in grain varieties and government legal requirements. The Government of Zimbabwe has established a Seed Services Department, which certifies all the seeds that are sold or distributed to beneficiaries. The database of suppliers compiled by the Seed Services will be used in the procurement of inputs for targeted beneficiaries.

## Red Cross and Red Crescent action

ZRCS works with the IFRC and a number of Partner National Societies (PNS) including the American, British, Finnish, Netherlands, and Norwegian Red Cross Societies in implementing food security, health and disaster management programmes. The support received by ZRCS from its partners has enhanced its capacity to plan, implement and monitor humanitarian programmes. Some of the PNS working with ZRCS have in-country delegates supporting the implementation of supported programmes.

### List of Programmes on-going and implemented in 2012 by Zimbabwe Red Cross

Partners	Programme	Coverage	Targeted households
American Red Cross	Building Resilient African Communities (BRACES)	Matebeleland North	1,800
British Red Cross	Recovery Support (Food Security)	Midlands Mashonaland West	9,000
Finnish Red Cross	Capacity Building Health First Aid (CBHFA)	Mashonaland Central	1,800
ICRC	Cooperation	National	

IFRC (DFID)	DFID/Zambezi River Basin Initiative	Mashonaland West	1,800
IFRC (European Funded Chivi-Water Sanitation and Hygiene Project)	Water and Sanitation	Masvingo	20,000
IFRC (Japanese Government)	Food Security Recovery/Food Voucher/WA	Masvingo Mashonaland East Mashonaland Central Manicaland Matebeleland North	13,000
IFRC (WFP)	Food Aid Support	Mashonaland Central	982
Netherlands Red Cross	Disaster Management DM (Women and Children)	Matebeleland South	1,000
Norwegian Red Cross	Disaster management and Organisational development	Midlands Manicaland Matebeleland North	7,200

## The needs

Although a number of food security related initiatives are being implemented by the government, ZRCS and other humanitarian agencies, large gaps remain in meeting the needs of the total population of 110,000 people affected by food insecurity. Based on the ZIMVAC priority areas and analysis of current interventions, the ZRCS will target Nkayi district of Matebeleland North Province, which is among the worst affected districts in terms of food insecurity. Nkayi population is reported to have a food expenditure of 52% and food insecurity prevalence of 20% of the district population. According to a Gunn Rural Management International<sup>1</sup> study titled “*An insight from Nkayi PRP Lime Baseline*” Nkayi district falls in a lowland region in agro-ecological regions 4 and 5, which is characterized by infertile sandy soils. Initial ZRCS assessments have confirmed the need for urgent interventions.

**Beneficiary selection:** The interventions will be targeting vulnerable households which have not yet received any food security interventions with a priority to displaced families, female-headed households and households including chronically ill, people living with HIV/AIDS and elderly people. The target of 10,000 beneficiaries represents approximately 50% of the anticipated food insecure people in the district.

The priority needs of the beneficiaries are food aid support and agricultural inputs packages (including seeds, tools, fertiliser and appropriate training) for the 2012/2013 main agricultural seasons. Agricultural inputs support will complement the food aid assistance in an effort to ensure agricultural recovery by farmers. The success of the inputs support will be enhanced by training to farmers in improved farming technology as well as training in climate change adaptation. This will enhance and restore the capacity of the community to cope with the stresses related to droughts and dry spells.

**Immediate needs:** Food insecure households are in dire need of food assistance until the harvest in April (see seasonal calendar below). The assistance should improve the nutritional status of the beneficiaries as well as an improved energy level. Without this immediate assistance, affected families will not be able to prepare and cultivate the next planting season, which will impact resilience.

Below is the calculation of the necessary food items for the planned interventions based on an average of 10.5 kg of maize meal, 1.8 kg of pulses and 0.75kg of oil per person per month.

### Summary of food requirements in MT

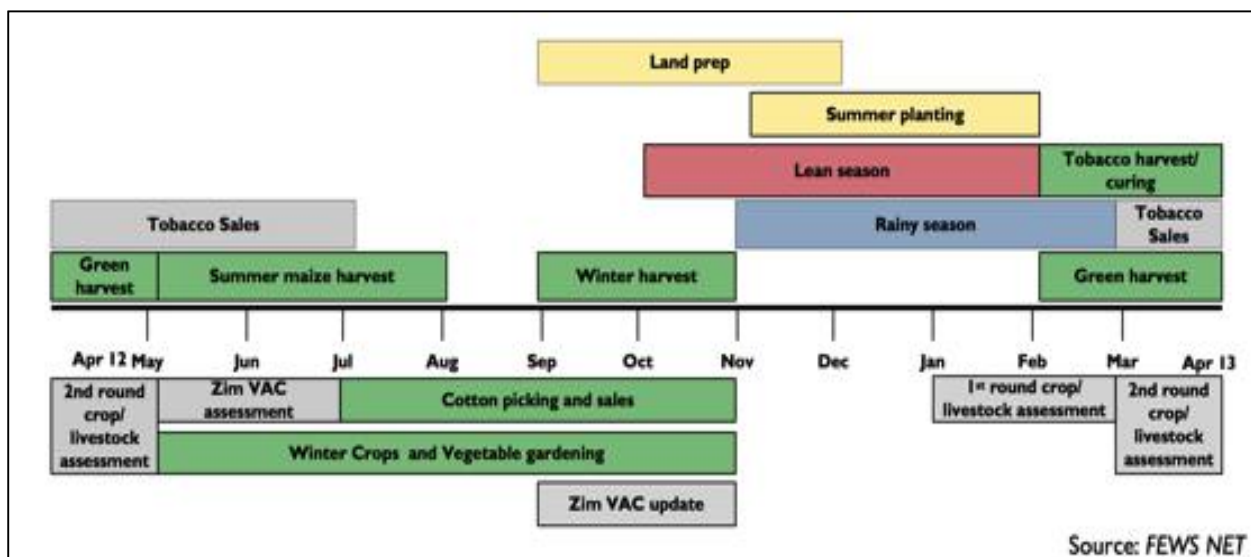
Commodity	Dec	Jan	Feb	Mar	Total
Maize	105	105	105	105	420
Oil	7.5	7.5	7.5	7.5	30
Pulses	18	18	18	18	72
<b>Total</b>	<b>130.5</b>	<b>130.5</b>	<b>130.5</b>	<b>130.5</b>	<b>522</b>

<sup>1</sup> [www.prpzim.info](http://www.prpzim.info)

Due to the limited rainfall in the target areas, families are resorting to unclean or contaminated water which is shared by animals. Also due to limited rainfall and weakened resilience of communities, some boreholes have gone dry. Livestock farmers have to migrate long distances to find sufficient grazing pasture.

**Medium to long-term needs:** The target communities receive little rainfall and have sandy soil and face a considerable challenge of water shortages for agricultural activities especially gardening, skills gaps on which crops best suit their geographical locations as well as access to inputs for agricultural activities. The interventions will address increase access to water for small scale vegetable production. Access to safe water has been affected due to low rainfall. Many of the water points in the target district have fallen into disrepair. Traditionally, a community's main source of safe water is from boreholes and protected hand dug wells. Most of the hand dug wells and boreholes dry up during the dry spells and affected communities have to search for water in dry river sand beds for domestic and livestock use. Access to sanitation coverage is still very low, estimated at 15% in most parts of the district. The operation will seek to address the water availability through rehabilitation of water points which provide safe water across the year. Sanitation coverage will be improved through promotion and support to construction of household and school latrines with hygiene promotion being an integral component of the hardware activities to encourage hygiene practices that prevent the spread of diseases.

### Zimbabwe seasonal calendar



## The proposed operation

The current food insecurity crisis is affecting the entire southern part of the country where Matebeleland North is located (see map), with a consequent direct effect on availability of food and increased food prices. Distribution of cash to beneficiaries is not considered an effective intervention method in response to this crisis because food production is not sufficient within the Southern Region. Therefore food aid distributions will be implemented as an emergency intervention in an effort to support households during the lean/hunger period. ZRCS will support farmers to be self-sustaining and this will be realized through agricultural inputs support complemented by trainings in farming techniques. The interventions will also seek to provide sustainable water solutions for farming activities mainly focusing on gardening activities.

The proposed operation will also support the targeted districts with borehole rehabilitation, based on the needs this could include repair, replacement or overhaul. Water troughs will be constructed for animals to avoid cross contamination of water sources. The proposed interventions related to water are the most feasible given the timeframe of the proposed period. The interventions will enhance household access to clean and safe water for household consumption as well as water for livestock, which is critical given that the targeted districts receive little rainfall. The provision of safe and clean water in combination with hygiene promotion activities and sanitation

activities in selected communities will contribute to reducing the risk of water borne diseases, a challenge that the country is failing to contain given the continued cases of typhoid that are being reported.

Families will be provided with food aid in line with WFP recommended food basket which includes cereals, pulses and vegetable oil. ZRCS will however conduct an intensive registration and verification process to determine the beneficiaries and their household members. This information will be computerised into a database that will be used for food aid distributions as well as monitoring of the programme's implementation.

The food aid, combined with agricultural recovery should lead to a significant improvement in the household food security situation. Training in agricultural production, including market linkages and climate change should boost food production, income generation and capacity of the targeted beneficiaries. The climate change awareness and adaptation training will build on disaster risk reduction initiatives of ZRCS within the targeted community. The impact of trainings and support will see a reduction in the number of households requiring food assistance in the longer term especially in the presence of a favourable rainfall pattern. Training related to disaster risk reduction will also see communities better prepared and equipped with knowledge of how to cope with disasters.

Trained volunteers in participatory health and hygiene education (PHHE) methodology will work through community health clubs (CHC) for initial household sensitization. A CHC is made up of 25 household members, and the action plan will be developed which contains activities that a group agrees to work on, which could include digging rubbish pits, household latrine pits, dish rack construction, sweeping and keeping household compounds clean and hand washing facilities maintained.

The intervention will therefore seek to provide the communities with sustainable ways of accessing water for gardening activities as well as inputs and training in post harvesting, market linkages and improved farming technology.

The ZRCS will work closely with the Department of AGRITEX staff in providing training for the livelihoods volunteers and with extension support for farmers. Livelihoods volunteers will receive training, undertake community mobilisation during implementation of the project and will continue with monitoring of the established community working groups post the operation.

A baseline survey will be carried out to further support data produced by national assessments as well as establishing the basis for evaluating the intervention in the targeted district. To measure the extent of impact and positive effect of the operation an end of term evaluation will also be conducted in the targeted district.

<b>Relief distributions (food and basic non-food items)</b>	
<b>Outcome 1: Immediate food needs of 2,000 households (10,000 beneficiaries) in Nkayi district of Matebeleland North Province are met for four months.</b>	
<b>Outputs (expected results)</b>	<b>Activities planned</b>
Supplementary food baskets are distributed to 10,000 vulnerable people for four months.	<ul style="list-style-type: none"> <li>• Conduct rapid emergency needs and capacity assessments.</li> <li>• Develop beneficiary targeting strategy and registration system to deliver intended assistance</li> <li>• Preparation of monthly food distribution and uploading plan.</li> <li>• Procurement of 420 MT of maize meal, 32 MT of oil and 72 MT of pulses.</li> <li>• Community notification of distribution date and time;</li> <li>• Distribution of monthly food packs (10.5kg maize, 1.8kg beans and 0.75kg oil) to 10,000 beneficiaries for 4 months.</li> <li>• Monitoring and evaluation of distribution activities</li> <li>• Train 20 volunteers on food distribution (beneficiary identification, targeting and post distribution monitoring).</li> <li>• Reporting.</li> </ul>

<b>Food security, nutrition and livelihoods</b>	
<b>Outcome 2: Reduced food insecurity among 2,000 affected rural households through inputs support and training.</b>	
<b>Outputs (expected results)</b>	<b>Activities planned</b>
Productive assets/inputs,	<ul style="list-style-type: none"> <li>• Continuous and detailed assessment, of food security, nutrition and</li> </ul>

<p>through the distribution of seeds and tools, for primary production and training are provided in accordance with the seasonal calendar.</p>	<p>livelihoods are carried out.</p> <ul style="list-style-type: none"> <li>• Distribution of small grain seeds, fertilizers and maize seed to 2,000 households.</li> <li>• Distribution of tools (each farm will receive four watering cans, two levelling rakes, two hoes and two wheelbarrows).</li> <li>• 100 lead farmers<sup>2</sup> (selected from the beneficiaries) trained to cascade crop production, climate change and adaptation and market linkage training to 2,000 farmers at a ratio of 1 lead farmer to 20 farmers.</li> <li>• Beneficiary training in seed selection and preservation to 100 lead farmers.</li> <li>• Distribution of vegetable seed packs to garden beneficiaries to 100 households.</li> <li>• Tracking system / monitoring of progress for the targeted farmers.</li> </ul>
--	---

### Water, sanitation, and hygiene promotion

<p><b>Outcome 3: Access to safe and clean water for domestic and livestock consumption and improved hygiene practises and access to basic sanitation facilities for 10,000 beneficiaries in Nkayi district is increased.</b></p>	
<p><b>Outputs (expected results)</b></p>	<p><b>Activities planned</b></p>
<p>10,000 people have access to safe water.</p> <p>Increased access to water for livestock.</p> <p>Increased knowledge in hygiene.</p>	<ul style="list-style-type: none"> <li>• Continuous assessments of water, sanitation, and hygiene situation.</li> <li>• 50 boreholes rehabilitated with water troughs constructed at each borehole.</li> <li>• 20 volunteers trained in participatory health and hygiene education.</li> <li>• 400 household latrines constructed in selected vulnerable communities.</li> <li>• Community level cascading of participatory health hygiene education.</li> </ul>

### Disaster Risk Reduction

<p><b>Outcome 4: Community resilience is strengthened through disaster risk reduction activities focusing on early warning systems and, enhanced coping mechanisms/strategies.</b></p>	
<p><b>Outputs (expected results)</b></p>	<p><b>Activities planned</b></p>
<p>Affected communities are better prepared to respond to food insecurity problems resulted from weather induced emergencies.</p>	<ul style="list-style-type: none"> <li>• 2,000 households trained in early warning systems.</li> <li>• 2,000 households trained in climate change awareness and adaptation.</li> <li>• Develop 1 district level contingency plan and 40 community-based early warning systems.</li> </ul>

### Logistics

The IFRC and ZRCS have experienced and well established logistics units with standard operating systems that will support the smooth and transparent implementation of the proposed interventions.

In order to support the operations procurement of food and non food commodities, two warehousing centres are proposed at regional level.

ZRCS will engage staff and trained volunteers to support the implementation of the project. Field officers will be employed to carry out registration, verification as well as distribution of the food commodities to the beneficiaries. ZRCS has a long standing partnership with schools and clinics which have availed their facilities for purposes of distributing food items to the beneficiaries. This long standing partnership will be used to ensure smooth and efficient distribution of food items to the intended beneficiaries.

<sup>2</sup> These lead farmers will be volunteers from amongst the target beneficiaries.

### **Communications – Advocacy and Public information**

Maintaining a steady flow of timely and accurate information between the field and other major stakeholders is vital for fundraising, advocacy and maintaining the profile of emergency operations. During an operation, communications between affected populations and the Red Cross and Red Crescent, as well as with the media and donors, is an essential mechanism for effective disaster response and the cornerstone to promote greater quality, accountability, and transparency. The communications activities outlined in this appeal are aimed at supporting the National Society to improve their communications capacities and develop appropriate communications tools and products to support effective operations. These activities are closely coordinated with the Communications department of the IFRC's Secretariat in Geneva.

### **Security**

To support the delegations safety and security framework in Zimbabwe, and to ensure effective security management is in place in support of the emergency operations, it will be important for the zone security team to provide timely advice and support in close coordination with the IFRC delegation and the ZRCS. To support this strategy, it is to be expected that a security support mission will need to take place to review and update the current safety and security regulations and guidelines, security information networks, and contingency plans in order to better reflect the current and dynamic context on the ground.

### **Capacity of the National Society**

The ZRCS has considerable experience working at community level and is a volunteer driven organisation with community-based volunteers across Zimbabwe. Community consultation through a participatory approach ensures capacity building at household levels strengthens social protection of the most vulnerable. The ZRCS staff are committed at all levels (national, provincial and district) to ensure effective and efficient implementation of all programmes. This grassroots structure enhances the capacity building of staff and volunteers to address relevant needs, as well as to monitor and evaluate projects and participate in data collection. ZRCS has a range of volunteers that are well trained in various aspects of humanitarian interventions including community-based health and first aid (CBHFA), disaster management, WatSan as well as food security and livelihoods initiatives. ZRCS is committed to enhancing community resilience to disasters such as drought, and will therefore use a community driven approach in the implementation of the planned activities which will enhance coping capacity of communities following the exit of ZRCS support.

ZRCS staff members at national, provincial and district level have diverse skills that will complement and enhance the impact of the interventions. The ZRCS also has a planning, monitoring, evaluation and reporting (PMER) unit, which is focused on building the capacity of staff and volunteers to effectively assess programme implementation. The department remains focused on building the capacity of staff and volunteers to effectively monitor programmes. The department also identifies skill gaps and organises training to rectify these.

### **Capacity of the IFRC**

The IFRC Zimbabwe Country Representation provides support to the National Society through resource mobilisation and capacity building by providing technical advice and training in relevant areas. The IFRC in collaboration with the ZRCS has coordinated the development and implementation of previous food security operations in Zimbabwe. In view of food insecurity presenting a major humanitarian challenge in Zimbabwe, the IFRC continues to strengthen response capacity and sustainable recovery programmes. Technical and strategic back-up is also available from the Federation's Southern Africa Regional office and from partner Red Cross Societies where needed.

The IFRC Country Representation will require the services of a logistics delegate and operations manager who will be engaged for a period of three to six months respectively. The two international staff will work closely with the IFRC and ZRCS teams in support to this operation. The Country Representation will also provide the operations team and staff based at Harare with administration, finance and reporting services as well as office space and services. The cost of these services will be recovered through this appeal.

**Lessons Learnt:** the design of this proposed operation has incorporated the following lessons learnt from previous food security operations (most recently in 2008):

- a. The complementarities of food aid and support to agricultural recovery leading to a significant improvement in the household food security situation. The impact of trainings and support will see a reduction in the number of households requiring food assistance for a much longer time period especially in the presence of a favourable rainfall pattern.

There will therefore be need to ensure that the food aid project is complemented by training in agricultural production, market linkages and climate change adaptation. This will enhance the recovery and capacity of the targeted beneficiaries enabling them to be self sustaining.

- b. Implementation of WatSan activities in the 2008 showed that the health status of affected communities was further enhanced through the provision of safe water, hygienic sanitation and improvement in good hygiene practices. The timing of the implementation process was also crucial as construction activities are often impacted by the rainfall season (limited construction activities due to rainfall, and community's concentration in farming activities during rainy season)
- c. The volunteer base of the Red Cross proved handy and critical in community and beneficiary mobilisation during the implementation of the 2008 operation. In this proposed operation, livelihood volunteers will be the primary recipients of training and monitoring post implementation of the project ensuring that established community working groups are maintained after the operation.
- d. Collaboration with government departments in implementation of interventions has proved to be sustainable as ward based extension officers (AGRITEX) continue working with community working groups. In this operation, the AGRITEX staff will be crucial in training the livelihood volunteers and making onsite visit and support to farmers.

#### **Budget summary**

See attached budget (Annex 1) for details.

Jagan Chapagain  
Acting Under Secretary General  
Programme Services Division

Bekele Geleta  
Secretary General

## Contact information

### For further information specifically related to this document, please contact:

- **Zimbabwe Red Cross Society:** Lucky Goteka, Acting Secretary General; phone: tel: +263.4.332638; +263.4.332197; email: [luckyg@redcrosszim.org.zw](mailto:luckyg@redcrosszim.org.zw)
- **IFRC Country Representation:** Oforbuike Nwobodo; Country Representative; Harare; phone: +263.4.705166; +263.4.720315, fax +263.4.708784; email [oforbuike.nwobodo@ifrc.org](mailto:oforbuike.nwobodo@ifrc.org)
- **IFRC Regional Representation:** Alexander Matheou Regional Representative for Southern Africa; Gabarone; phone: +267 3712700, mob: +267 71395340, fax: +267 3950090: email: [alexander.matheou@ifrc.org](mailto:alexander.matheou@ifrc.org)
- **In Geneva:** Cristina Estrada, Operations Support Coordinator Phone: +41 79 3583106 Email: [cristina.estrada@ifrc.org](mailto:cristina.estrada@ifrc.org)

### For Resource Mobilization and Pledges:

- **IFRC Africa Zone:** Loïc de Bastier, Resource Mobilization Coordinator for Africa; Addis Ababa; phone: +251-93-003 4013; fax: +251-11-557 0799; email: [loic.debastier@ifrc.org](mailto:loic.debastier@ifrc.org)

### For Performance and Accountability (planning, monitoring, evaluation and reporting):

- **IFRC Africa Zone:** Robert Ondrusek, PMER/QA Delegate for Africa; Nairobi; phone: +254 731 067277; email: [robert.ondrusek@ifrc.org](mailto:robert.ondrusek@ifrc.org)

---

## How we work

All IFRC assistance seeks to adhere to the Code of Conduct for the International Red Cross and Red Crescent Movement and Non-Governmental Organizations (NGO's) in Disaster Relief and the Humanitarian Charter and Minimum Standards in Disaster Response (Sphere) in delivering assistance to the most vulnerable.

The IFRC's vision is to inspire, encourage, facilitate and promote at all times all forms of humanitarian activities by National Societies, with a view to preventing and alleviating human suffering, and thereby contributing to the maintenance and promotion of human dignity and peace in the world.

[www.ifrc.org](http://www.ifrc.org)

Saving lives, changing minds.



The IFRC's work is guided by Strategy 2020 which puts forward three strategic aims:

1. Save lives, protect livelihoods, and strengthen recovery from disaster and crises.
  2. Enable healthy and safe living.
  3. Promote social inclusion and a culture of non-violence and peace.
-

# EMERGENCY APPEAL

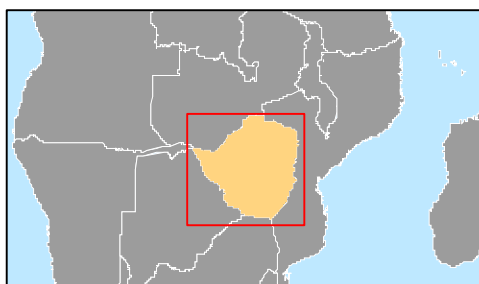
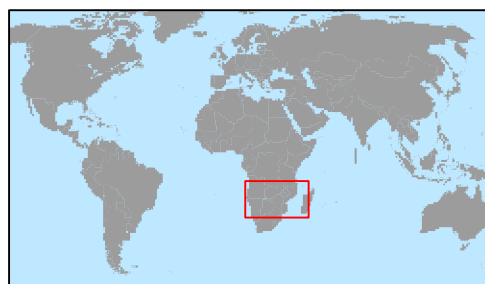
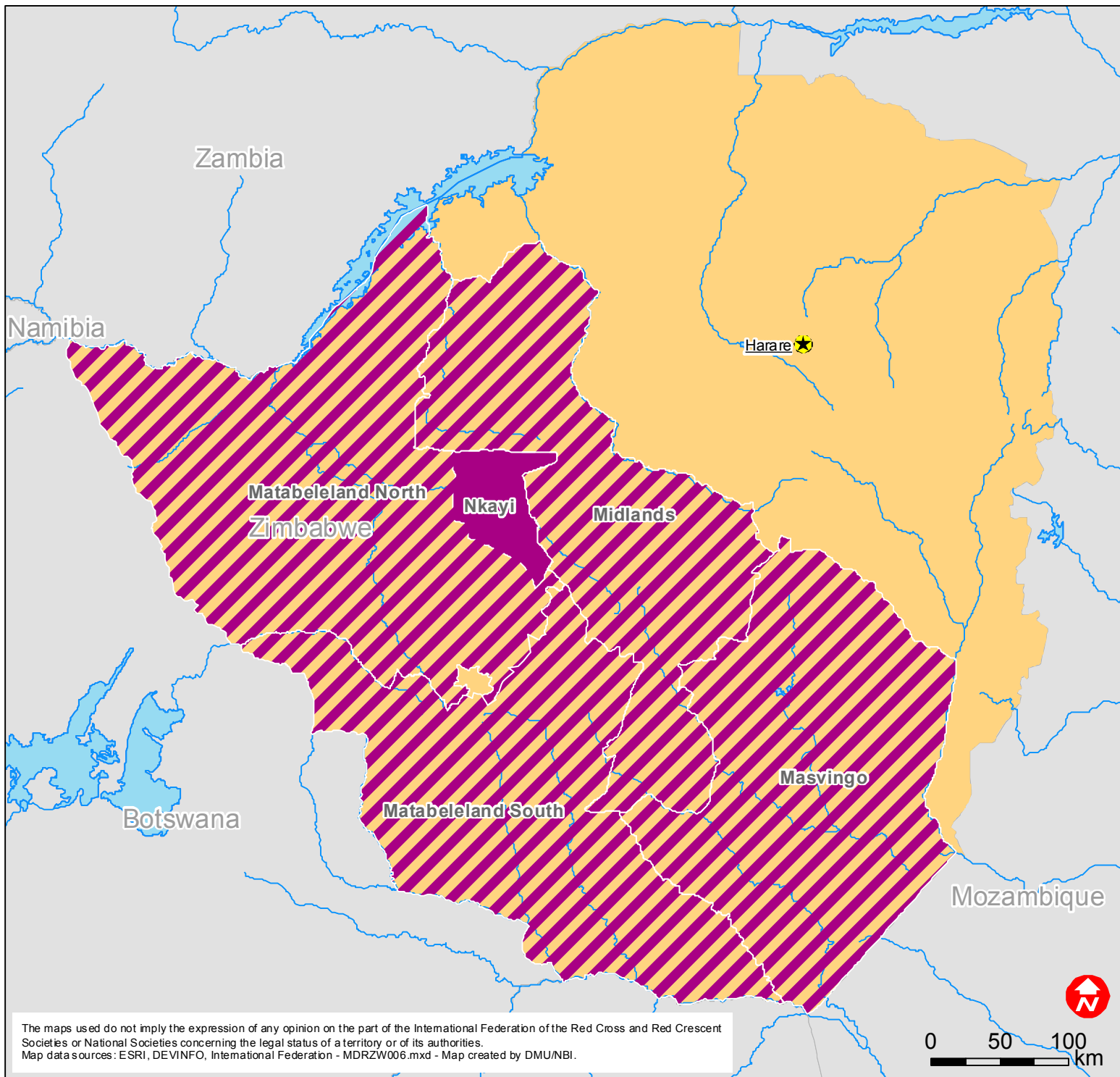
19/12/2012

## MDRZW006 ZIMBABWE: FOOD INSECURITY

Budget Group	Multilateral Response	Inter-Agency Shelter Coord.	Bilateral Response	Appeal Budget CHF
Shelter - Relief				0
Shelter - Transitional				0
Construction - Housing				0
Construction - Facilities				0
Construction - Materials				0
Clothing & Textiles				0
Food	405,880			405,880
Seeds & Plants	142,500			142,500
Water, Sanitation & Hygiene	113,250			113,250
Medical & First Aid				0
Teaching Materials	2,000			2,000
Utensils & Tools	30,000			30,000
Other Supplies & Services				0
Emergency Response Units				0
Cash Disbursements				0
<b>Total RELIEF ITEMS, CONSTRUCTION AND SUPPLIES</b>	<b>693,630</b>	<b>0</b>	<b>0</b>	<b>693,630</b>
Land & Buildings				0
Vehicles				0
Computer & Telecom Equipment	1,000			1,000
Office/Household Furniture & Equipment				0
Medical Equipment				0
Other Machinery & Equipment				0
<b>Total LAND, VEHICLES AND EQUIPMENT</b>	<b>1,000</b>	<b>0</b>	<b>0</b>	<b>1,000</b>
Storage, Warehousing	24,000			24,000
Distribution & Monitoring	6,875			6,875
Transport & Vehicle Costs	94,642			94,642
Logistics Services				0
<b>Total LOGISTICS, TRANSPORT AND STORAGE</b>	<b>125,517</b>	<b>0</b>	<b>0</b>	<b>125,517</b>
International Staff	96,000			96,000
National Staff	48,600			48,600
National Society Staff	99,882			99,882
Volunteers	16,940			16,940
<b>Total PERSONNEL</b>	<b>261,422</b>	<b>0</b>	<b>0</b>	<b>261,422</b>
Consultants				0
Professional Fees				0
<b>Total CONSULTANTS &amp; PROFESSIONAL FEES</b>	<b>0</b>	<b>0</b>	<b>0</b>	<b>0</b>
Workshops & Training	42,650			42,650
<b>Total WORKSHOP &amp; TRAINING</b>	<b>42,650</b>	<b>0</b>	<b>0</b>	<b>42,650</b>
Travel	14,000			14,000
Information & Public Relations	10,220			10,220
Office Costs	36,500			36,500
Communications	12,150			12,150
Financial Charges	14,500			14,500
Other General Expenses				0
Shared Office and Services Costs				0
<b>Total GENERAL EXPENDITURES</b>	<b>87,370</b>	<b>0</b>	<b>0</b>	<b>87,370</b>
Partner National Societies				0
Other Partners (NGOs, UN, other)				0
<b>Total TRANSFER TO PARTNERS</b>	<b>0</b>	<b>0</b>	<b>0</b>	<b>0</b>
Programme and Services Support Recovery	78,753	0		78,753
<b>Total INDIRECT COSTS</b>	<b>78,753</b>	<b>0</b>	<b>0</b>	<b>78,753</b>
Pledge Earmarking & Reporting Fees				0
<b>Total PLEDGE SPECIFIC COSTS</b>	<b>0</b>	<b>0</b>	<b>0</b>	<b>0</b>
<b>TOTAL BUDGET</b>	<b>1,290,342</b>	<b>0</b>	<b>0</b>	<b>1,290,342</b>
<b>Available Resources</b>				
Multilateral Contributions				0
Bilateral Contributions				0
<b>TOTAL AVAILABLE RESOURCES</b>	<b>0</b>	<b>0</b>	<b>0</b>	<b>0</b>
<b>NET EMERGENCY APPEAL NEEDS</b>	<b>1,290,342</b>	<b>0</b>	<b>0</b>	<b>1,290,342</b>



# Zimbabwe: Food Insecurity



- Other Affected Provinces
- ZRCS Target Area