

www.ifrc.org
Saving lives,
changing minds.

Emergency Appeal Bangladesh: Tropical cyclone

 International Federation
of Red Cross and Red Crescent Societies

Emergency Appeal n° MDRBD013
GLIDE n° **TC-2013-000060-BGD**
24 May 2013

This Emergency Appeal seeks CHF 2,789,432 in cash, kind, or services to support the Bangladesh Red Crescent Society (BDRCS) to assist 9,000 families (45,000 beneficiaries) for nine months, and will be completed by the end of February 2014. A Final Report will be made available by the end of May 2014 (three months after the end of the operation).

On 18 May 2013, CHF 305,688 was allocated from the International Federation of Red Cross and Red Crescent Societies' (IFRC) Disaster Relief Emergency Fund (DREF) to support BDRCS in delivering immediate assistance to 20,000 beneficiaries for three months. Unearmarked funds to replenish DREF are encouraged.



National Disaster Response Team (NDRT) members supporting the distribution of non-food items (NFIs) in Patuakhali district. **Photo:** BDRCS.

[<click here to view the attached Emergency Appeal budget; here to link to a map of the affected area; or here to view contact details>](#)

Summary

During the morning of 16 May 2013, cyclonic storm Mahasen made landfall in Patuakhali district in southern Bangladesh and weakened as it advanced and a predicted storm surge was avoided due to low tide. It hit ten west central coastal districts on 16 May, affecting 1,499,084 people¹ and leaving 17 people dead. Of the ten coastal districts hit, the three districts of Patuakhali, Bhola and Barguna are the worst affected as the cyclone made its landfall. Since 15 May, a total of 1.1 million people were evacuated by the Government of Bangladesh (GoB) and the Bangladesh Red Crescent Society's (BDRCS) Cyclone Preparedness Programme (CPP) team to cyclone shelters. The evacuated populations have started returning to their homes, while people who lost their houses are living in make-shift houses or under open skies. As per the government's initial information of 20 May, a total of 26,577 houses have been completely damaged and 124,428 houses have been partially damaged in nine affected districts.² People have been

¹ Government D form information from nine districts: Patuakhali, Bhola, Barguna, Jalokhati, Chittagong, Pirojpur, Satkhira, Laksmipur and Noakhali.

² Government D form information from nine districts: Patuakhali, Bhola, Barguna, Jalokhati, Chittagong, Pirojpur, Satkhira, Laskmipur and Noakhali.

forced to take shelter on roadsides and in temporary locations. Women, children, the elderly and disabled were the most affected in this context, because it became difficult for them to maintain their regular routines and remain secure in new dwellings.

The early detection of the cyclonic storm towards the coastal areas of Bangladesh on 11 May triggered an immediate response from BDRCS. Immediately, BDRCS alerted and mobilized its 49,365 CPP volunteers and staff, and disseminated early warning messages to the populations living in the 13 cyclonic storm Mahasen-threatened districts. BDRCS called an emergency review meeting to mobilize its staff, volunteers and resources in order to respond to the consequences of the cyclonic storm since 12 May. In addition, BDRCS conducted light search and rescue operations, provided first aid, and distributed dry food and clean water to the affected population, particularly in the remote islands of Patuakhali, Bhola and Barguna districts.

The BDRCS cyclone contingency plan has been activated since the early warning stages. BDRCS and the International Federation of Red Cross and Red Crescent Societies (IFRC) had deployed three joint teams in Chittagong, Noakhali and Barisal regions which were expected to be affected by the cyclonic storm. On 18 May, BDRCS sent relief items from its prepositioned stocks for 4,000 families (20,000 beneficiaries) in the districts of Patuakhali, Barguna and Bhola. On 19 May, Patuakhali district unit distributed tarpaulin and water jerry cans to 300 families (1,500 beneficiaries).

To reinforce the capacities of the BDRCS district units, six National Disaster Response Team (NDRT) members are deployed in the districts of Patuakhali, Barguna and Bhola.

Since 14 May, regular meetings have been held, where BDRCS, in-country Partner National Societies (PNSs), IFRC and the International Committee of Red Cross (ICRC) took part. The Humanitarian Shelter Cluster met in Dhaka on 16 and 17 May to review its readiness for immediate shelter assistance to the affected population. The Shelter Cluster lead role has been handed over to IFRC from UNDP. The Shelter Cluster upon the request of GoB has been working for a Shelter Cluster coordinated response. Also, it is sought for the Shelter Cluster to work in coordination with the Early Recovery and Wash Cluster. A shelter technical delegate from the IFRC Asia Pacific zone office has been assigned to coordinate the Shelter Cluster in Bangladesh. The IFRC-led Shelter Cluster is deploying an assessment manager and a GIS/Database officer to support the joint needs assessment initiatives of Shelter Cluster partners in the country, through the existing standby capacity of the International Mobilization and Preparation for ACTION (IMPACT), an initiative implemented in partnership with the Agency for Technical Cooperation and Development (ACTED) and United Nations Institute for Training and Research's (UNITAR) Operational Satellite Applications Programme (UNOSAT).

To date, the GoB has distributed rice, shelter materials and cash grant to the affected population. Further assistance is required for emergency shelter materials, basic food items, water and sanitation (WatSan) facilities, as well as early recovery needs through transitional shelter and livelihood support. BDRCS, with the support and coordination of IFRC, will respond to immediate needs of the affected population in food and non-food items (NFIs), WatSan, shelter and livelihood.

The proposed operation is to support 5,000 families of the three most affected districts: Patuakhali, Barguna and Bhola. During the relief phase, BDRCS/IFRC will assist these families by providing cash grants for food and NFIs, water storage jerry cans, hygiene support through family hygiene kits and education and tarpaulins. In addition, during the early recovery phase the 4,000 families from the same districts will be supported through shelter solution, including cash and materials as proposed by the Shelter Cluster working group, and appropriate sanitary latrine to 50 per cent (2,000 families) of the families targeted for shelter assistance based on the Joint Needs Assessment results (JNA) to be conducted jointly by Shelter, WASH and Early Recovery clusters.

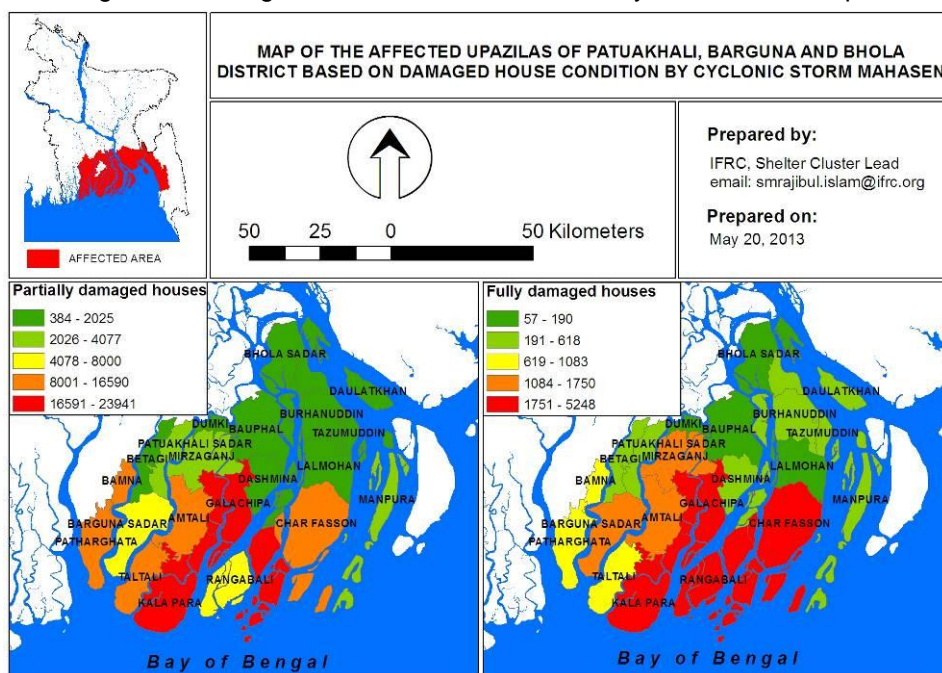
The operation is expected to be implemented over nine months, and will be completed by the end of February 2014. A Final Report will be available by the end of May 2014 (three months after the end of the operation).

The situation

Cyclonic storm Mahasen hit ten west central coastal districts on 16 May, affecting 1,499,084 people and leaving 13 people dead. On 15 May around 1.1 million people were evacuated to safer places like cyclone shelters. Some of these evacuated populations have started returning to their homes though some of them are still in cyclone shelters as the homesteads are flooded with tidal surges caused by the cyclone. As per the government's initial information as of 20 May, a total of 26,577 houses have been completely destroyed and 124,428 houses are partially destroyed.

According to the Bangladesh Meteorological Department (BMD), cyclonic storm Mahasen was positioned over west central Bay and adjoining east central Bay on 15 May 2013 and moved slightly north-northeastwards. It was centred at about 875 km southwest of Chittagong port, 815 km southwest of Cox's Bazar port and 760 km south-southwest of Mongla port (near lat 16.00 n and long 87.00 e) on 15 May. It was likely to intensify further and move in a north-northeasternly direction and anticipated to cross Khepupara-Teknaf coast near Chittagong by 16 May, although the peripheral gusty/squally wind was expected to impact the coastal regions of Bangladesh at 20:00hr on 15 May. The maritime ports of Chittagong and Cox's Bazar had been advised to lower local warning signal number four instead of hoisted danger signal number seven, while for Mongla, signal number five had been hoisted.

A total of 49,365 CPP volunteers had been mobilized in the 13 coastal districts since 12 May. The CPP volunteers were engaged in disseminating alert messages to coastal communities to prepare them for safe evacuation and advising fishermen not to sail too far off the coast.



During the morning of 16 May, the cyclonic storm made landfall in Patuakhali district in southern Bangladesh and weakened as it advanced and a predicted storm surge was avoided due to low tide. Meanwhile, the maritime ports of Chittagong and Cox's Bazar were advised to lower danger signal number seven and hoist local cautionary signal number three. The maritime port of Mongla was advised to lower danger signal number five but instead hoist local cautionary signal number three. All fishing boats, trawlers and marine vessels over the North Bay have been advised to remain in shelter until noon of 17 May and then preceded with caution until further notice. Air traffic and river transportation systems in Chittagong and Cox's Bazar port were suspended for two days.

BDRCS has been conducting light search and rescue operations, giving first aid, and distributing dry food and safe drinking water to the affected population. On 18 May, BDRCS sent relief items for 4,000 families in the districts of Patuakhali, Barguna and Bhola. On 19 May, Patuakhali district unit distributed tarpaulin and water jerry cans to 300 families.

The GoB distributed 3,501 MT of rice and BDT 12 million (approximately CHF 146,323) in cash to people in the affected districts. With the Prime Minister's Cabinet's approval, the District Disaster Management Committees (DDMCs) were to treat all public buildings as safer shelters, including some private buildings such as hotels. Around 100 water treatment plants are mobilised to serve the cyclonic storm affected population. The Armed Forces, under the Prime Minister's Office order, has established information hubs to coordinate food distribution.

Heavy rains caused by the cyclone coupled with gales flattened huge tracts of standing crops and washed away numerous fish ponds and fish culture. It also caused extensive damage to embankments in the coastal districts. Thousands of people have been injured and many livestock killed.

The urgent need of the affected people remains to provide shelter and basic food and WatSan. Further assistance is needed in the longer-term to help the affected communities to rebuild and restore their livelihoods. BDRCS, with the support and coordination of IFRC, will respond to immediate needs of the affected population in food and NFIs, WatSan, shelter and livelihood.

Coordination and partnerships

BDRCS national headquarters (NHQ) maintained regular communication with BMD to monitor the weather situation. In addition, BDRCS has been gathering situation updates from the NDRCC, Ministry of Disaster Management and Relief, and different agencies including UNDP. Since BDRCS/IFRC are active members of the Humanitarian Coordination Task Team (HCTT), Local Consultative Group (LCG)- Disaster Emergency Response (DER) group, information and operation updates are shared with other humanitarian agencies and the Ministry in order to avoid overlapping of distribution of relief goods. BDRCS has good working relations with the local administration, and this enables the national society to effectively target the most affected areas and communities.

BDRCS, in-country PNSs, IFRC and ICRC have been engaged in regular meetings since 14 May. BDRCS is actively engaged in the response operation and is utilising IFRC and PNSs to ensure strong communication and action is maintained at a highest level. All in-country PNSs have agreed that IFRC will maintain a coordination role in this operation. Pre- and post-landfall Movement coordination has been taking place. BDRCS has shared assessment and current response data which has in turn been shared with all partners as well as external agencies and actors. The British Red Cross is supporting BDRCS/IFRC in providing its staff to assist with beneficiary selection in the districts of Barguna and Patuakhali. They have indicated that their local staff in the two areas are available to assist further as needed. The German Red Cross has offered human resource support in the longer term programming and capacity building should that be identified as a future activity.

The Humanitarian Shelter Cluster met in Dhaka on 16 and 17 May to review its readiness for response of immediate shelter assistance for the affected population. The Shelter Cluster lead role has been handed over to the IFRC from UNDP. The Shelter Cluster upon the request of GoB has been working to determine a coordinated response. The Shelter Cluster works in coordination with Early Recovery and Wash Clusters as an integrated assistance is sought. The shelter delegate from the IFRC Asia Pacific zone office has been assigned to coordinate the Shelter Cluster in Bangladesh.

Red Cross and Red Crescent action

When the cyclonic storm was approaching the coastal areas of Bangladesh from 11 May, BDRCS immediately alerted and mobilized its CPP volunteers and staff for disseminating early warning messages to the populations living in the 13 targeted districts. BDRCS called an emergency review meeting to prepare a plan for mobilizing its staff, volunteers and resources to respond to the consequences of the cyclonic storm. In-country PNSs, the British Red Cross and German Red Cross have provided additional vehicles for BDRCS's initial response activities. The British Red Cross and German Red Cross will be operating in their respective project areas in the offshore islands of Hatia, Khulna and, Borguna, Patuakhali districts.



BDRCS volunteers disseminating early warning messages in the affected communities. **Photo:** BDRCS.

The BDRCS cyclone contingency plan has been activated since the early warning stages. BDRCS and IFRC have deployed three joint teams in Chittagong, Noakhali and Barisal regions. Each of the teams had BDT 100,000 (approximately CHF 1,219) cash for emergency procurement of dry food from the local suppliers. Initially, BDRCS NHQ had dispatched three trucks with 3,000 NFIs (tarpaulins and water jerry cans) to the areas mentioned above. The results of the storm in Chittagong did not require the NFIs to be utilised, thus BDRCS decided to focus on the more affected areas. The prepositioned NFIs for Chittagong were returned to the NHQ.

On 18 May, BDRCS sent relief items for 4,000 families (20,000 beneficiaries) in the districts of Patuakhali, Barguna and Bhola. On 19 May, Patuakhali district unit distributed tarpaulin and water jerry can to 300 families (1,500 beneficiaries). As of 22 May, BDRCS distributed relief items to 7,000 families (35,000 beneficiaries). Although beneficiary selection is almost completed, the heavy rain is likely to slow the distribution process.

To reinforce the BDRCS district units' capacities in beneficiary selection and distribution, six NDRT members have been deployed in the districts of Patuakhali, Barguna and Bhola.



Dispatch of relief items from NHQ to the affected areas.
Photo: BDRCS.

The needs

The cyclonic storm has affected millions of lives and damaged properties and livelihoods.

Food and non-food items

Although the GoB is responding to the immediate food needs of the affected population, there remain gaps to be filled to meet the needs of the affected population, until the next harvest. The GoB has also supported some targeted families through small cash grants.

Shelter (emergency and transitional)

According to government sources, a total of 26,577 houses have been completely damaged and 124,428 houses have been partially damaged in nine affected districts.. People have been forced to take shelter on roadsides and in temporary locations. Women, children, the elderly and the disabled were the most affected, and it has become difficult for them to maintain their regular routines and remain secure in their new dwellings. Through small grants, the government has supported some targeted affected families. However, further assistance is required to meet the early recovery needs through transitional shelter support.

WatSan

A considerable number of hand tube-wells and ponds have been contaminated by tidal surge waters forcing the affected population to seek alternative safe water sources, particularly in Patuakhali and Barguna. Subsequently, people are collecting drinking water from distant sources. Hence, proper water storage facilities are needed to overcome this present situation. In some circumstances, the affected communities are utilizing contaminated and polluted water from nearby bodies of water. Inadequate sanitary facilities have caused many to openly defecate, hence contaminating pond waters and increasing the risks of the spread of water-borne illness. The lack of sanitary facilities has created long queues and exposed women to potential danger during night time whenever they try to access these facilities. This situation needs a thorough assessment and a longer term solution.

Livelihoods

Agriculture is the main occupation for the majority of the affected population. The cyclonic wind, along with heavy rain and tidal water, has affected crops. Although there are some agricultural sector damages but they are in limited areas the GoB is planning to support those in need from its own sources.

Beneficiary selection:

The BDRCS and IFRC joint teams will visit the local administration, and will follow up on government updates with regards to present and future interventions. The population in temporary shelters or makeshift houses will be prioritized in the selection of beneficiaries in the affected locations and districts of Patuakhali, Barguna and Bhola. According to the BDRCS and other assessment reports, the vulnerability criteria focuses on the elderly women, marginal income farmers, women-headed families, lactating mothers, and physically challenged people.

The Proposed Operation

In total, 5,000 families will receive emergency relief support and another 4,000 families will receive recovery support. The proposed operation is to support 5,000 families of three most affected districts of Patuakhali, Barguna and Bhola during the relief phase through cash grant for food and NFIs, water storage jerry cans, and tarpaulins. In addition, during the early recovery phase, a further 4,000 families from the same districts will be supported through shelter solution including cash and materials in line with the Shelter Cluster. A programme of awareness raising and technical support will be provided to help families repair or rebuild their houses in a safer, more resilient way. The programme is expected to run for nine months.

Relief Phase targeting 5,000 families or 25,000 people			
Sector	Intervention type	No. of families	Beneficiary Criteria
Food & Non-food	Cash for basic food and non-food items	5,000	Families whose house is damaged and staying under open sky as well as livelihood means (agricultural products, fisheries sector) are affected.
	WATSAN	5,000	
	Water storage through jerry cans	5,000	
	Family hygiene kit and education	5,000	
Shelter	Emergency shelter through tarpaulin	5,000	

Early Recovery Phase targeting 4,000 families or 20,000 people			
Sector	Intervention type	No. of families	Beneficiary Criteria
Shelter	Shelter solution through cash, materials and training	2,000	Most vulnerable families whose houses are fully damaged.
		2,000	Most vulnerable families whose houses are partially damaged.
Sanitation	Sanitary latrine	2,000	50 per cent of the families receiving shelter support based on details assessment on sanitation situation.
	Sanitation campaign	2,000	

Relief distributions (food and basic non-food items)

Outcome: The immediate basic food and essential household needs of 5,000 affected families in the districts of Patuakhali, Bhola and Barguna are met within one month.	
Outputs (expected results)	Activities planned
The target families received a single cash grant of BDT 2,000 (CHF 25) per family for food and household needs.	Activities planned: <ul style="list-style-type: none"> • Door-to-door assessments. • Beneficiary registration and validation. • Distribution of a single cash grant for food and immediate needs. • Regular monitoring and reporting through BDRCS national headquarters staff and IFRC field monitors.

Water, sanitation, and hygiene promotion

Outcome 1: Water-related diseases are reduced and hygiene situation is improved for 5,000 affected families within one month in the districts of Patuakhali, Bhola and Barguna.	
Outputs (expected results)	Activities planned
The target families have	<ul style="list-style-type: none"> • Mobilize water jerry cans from BDRCS/IFRC joint DP stock.

improved access to safe drinking water through proper water storage (two jerry cans per family) and have better hygiene situation through hygiene kit (1 per family) and education	<ul style="list-style-type: none"> • Mobilize family hygiene kit from KL DP stock • Distribution of jerry cans and hygiene kit to the same family targeted for cash grant. • Hygiene education campaign during distribution of hygiene kits. • Regular monitoring and reporting through BDRCS national headquarters staff and IFRC field monitors. • Replenishment of the DP stock through Zone Logistics Unit.
Outcome 2: Provision of hygienic latrine for 2,000 families is ensured within nine months in the districts of Patuakhali, Bhola and Barguna.	
Outputs (expected results)	Activities planned
The target families have improved sanitation facilities through household sanitary latrine.	<ul style="list-style-type: none"> • Beneficiary registration and validation in line with the shelter component. • Dissemination of beneficiary list in communities. • Mobilize resources for construction/installation of sanitary latrine. • Regular monitoring and reporting through BDRCS national headquarters staff and IFRC field monitors.

Emergency shelter

Outcome 1: The emergency shelter needs for 5,000 affected families are provided within one month in the districts of Patuakhali, Bhola and Barguna.	
Outputs (expected results)	Activities planned
The target families received emergency shelter materials (two tarpaulins per family ³) to meet their immediate shelter needs.	<ul style="list-style-type: none"> • Mobilize tarpaulins from BDRCS/IFRC joint DP stock. • Distribution of tarpaulins by the Red Crescent Youth (RCY) volunteers to the same family targeted for cash grant. • Regular monitoring and reporting through BDRCS national headquarters staff and IFRC field monitors. • Procurement and replenishment of tarpaulins dispatched from BDRCS/IFRC DP stock. • On-going monitoring and technical advice by BDRCS national headquarters and IFRC.

Transitional Shelter

Outcome: 4,000 affected families in the districts of Patuakhali, Bhola and Barguna will receive shelter support which allows them to repair or rebuild their damaged or destroyed houses through the provision of locally appropriate building materials as suggested by the Shelter Cluster in Bangladesh within nine months. Families received awareness raising and technical support on how to repair or rebuild their houses in a safer, more resilient way.	
Outputs (expected results)	Activities planned
Output 1: The 2,000 target families whose houses were completely damaged by the tropical cyclone have rebuilt their houses in a safer more resilient way within nine months.	<ul style="list-style-type: none"> • Beneficiary selection and finalization of fully-damaged shelter category. • Mobilizing shelter materials based on assessment through IFRC standard procurement policy. • Provide cash grant for shelter solutions in line with the technical guidelines provided by the Shelter Cluster. • Support the provision of sanitation. • Orient BDRCS volunteers for supporting shelter rebuilding work. • Conduct PASSA to help beneficiaries to rebuild their houses in a safer way. • Regular monitoring and reporting through BDRCS national headquarters staff and IFRC field monitors. • On-going monitoring and technical advice by BDRCS national headquarters and IFRC. • Preparing case studies and conduct evaluation study at the end for

³ Only tarpaulins will be provided as external materials (ie rope and bamboo) are locally available to fix a makeshift shelter with tarpaulins. People who already have basic means for shelter use tarpaulins as ground sheets.

	this operation.
Output 2: The 2,000 target families whose houses were partially damaged by the tropical cyclone have repaired their houses in a safer more resilient way within nine months.	<ul style="list-style-type: none"> • Beneficiary selection and finalization of partially-damaged shelter category • Mobilizing shelter materials through IFRC standard procurement policy. • Provide cash grant for shelter solution. • Orient BDRCS volunteers for supporting shelter rebuilding work. • Conduct PASSA to help beneficiaries to repair their houses in a safer way. • Regular monitoring and reporting through BDRCS national headquarters staff and IFRC field monitors. • On-going monitoring and technical advice by BDRCS national headquarters and IFRC. • Preparing case studies and conduct evaluation study at the end for this operation.

National Society Preparedness for Response

Outcome: The disaster preparedness and response capacity of BDRCS national headquarters and selected district units in affected areas strengthened within nine months.	
Outputs (expected results)	Activities planned
BDRCS national headquarters and district units in operational areas have improved their disaster response capacities.	<ul style="list-style-type: none"> • Developing concept note/ToR of training in disaster response tools, approach and procedures. • Conducting training for staff and volunteers on response tools. • Conducting one NDRT course. • Providing personal gears to NDRT. • Minor repairs and renovation of some BDRCS units. • Providing durable IT equipment to BDRCS response department.

Logistics

Logistics support will be provided following IFRC procedures to source and procure relief items needed, and to ensure the efficient and timely delivery of these items for the success of the operation. Tarpaulins are being supplied by the BDRCS/IFRC pre-positioned stock in Dhaka and will be replenished by the Asia Pacific Zone Logistics Unit in Kuala Lumpur.

Communications – Advocacy and Public information

The IFRC communications team works closely with BDRCS to ensure the steady flow of information between operations in the field and major stakeholders including media, Movement partners and donors to provide regular and consistent updates on the disaster situation, and emergency and recovery operation. This is in addition to the already extensive media coverage on the situation and Red Cross Red Crescent response in the early days of the disaster. News stories on the disaster situation and beneficiary profiles will be highlighted in through international local media as well as on IFRC online channels such as the official website, www.ifrc.org, social media platforms and the blog site Our World Your Move. The BDRCS district units will engage the local media outlets to highlight the Red Cross Red Crescent response.

Regular flow of information will also be maintained between beneficiaries, respective BDRCS district units and response departments at the national headquarters to maintain transparency and address the immediate needs of the most vulnerable communities. Prior to relief distributions, beneficiaries will be made aware about the distribution packages, services, and the Fundamental Principles of the Red Cross Red Crescent Movement. The relief operation will maintain visibility in the field through appropriate branding such as banners and BDRCS aprons to enhance awareness about the role of the National Society and IFRC in the operation. BDRCS will also take initiatives to document all media releases and videos on this operation.

Capacity of the National Society

BDRCS has a strong base of volunteers across the country with 50,000 volunteers in the coastal belts over 37 upazila (subdistricts) under the CPP, one third of which are female volunteers. The volunteers are skilled on community-based disaster preparedness/management, in basic training of first aid, search and rescue. BDRCS has 68 district/city branches throughout the country with more than 350,000 members. BDRCS, with IFRC's support, has created NDRT and Regional Disaster Response Team (RDRT) volunteers, who are on standby to be deployed at a moment's notice. As per the Disaster Mandate of the Standing Orders, during disasters, the Ministry of Disaster Management and Response (MoDMR), and BDRCS district units collaborate with local administrations. Additionally, BDRCS keeps close contact with the Department of Disaster Management, and Flood Forecasting and Warning Centre in order to stay up-to-date with the changing weather patterns in order to be prepared in the event of a disaster.

BDRCS has extensive experience in the field of humanitarian response and disaster risk reduction, in flood and cyclone prone districts. Since its inception, BDRCS has been involved in areas prone to disasters with quick and effective humanitarian response. Due to BDRCS's longstanding involvement in disaster response in Bangladesh, its staff has had international exposure and some have been working for the Movement.

BDRCS, with IFRC technical assistance, has a time tested cash grant distribution system for recovery and resilience projects, for example the Cyclone Sidr of 2007 floods. Its most recent experience being that of the cash grants distribution for livelihood recovery under the flood appeal which ended on June 2012. Standard procedures for cash grants (registration of beneficiaries, opening of bank accounts by beneficiary households, maintaining beneficiary ID cards to get the cash, receipt of grant through bank transfers, maintaining master roll, etc.) are in place. This system will be adapted to match the demand of the Emergency Appeal operation.

BDRCS has placed an officer with each of the units in the affected areas, and they have been working on the response operation since the first day of this disaster. In coordination with the local administration, units have been sending daily situation reports on the evolving situation. Owing to the recent large-scale floods, Cyclones Sidr and Aila operations, the capacity of BDRCS NHQ has been enhanced. BDRCS warehouses in the north will serve as a strategic hub for the distribution of items. Technical support is provided by the IFRC country, regional and zone offices.

BDRCS has implemented PASSA program in three districts and have 20 trained volunteers. Furthermore, BDRCS has two PASSA trainers who had been involved in the recent PASSA ToT in Nepal between 12 to 19 May 2013. Two staff members who were trained in PASSA have practical experience of program implementation.

Capacity of the IFRC

The IFRC country office exists to support the host National Society on humanitarian response with a competent disaster management team. IFRC takes part in HCTT, at national level platform co-chaired by the MoDMR and UN RC of humanitarian response coordination. As a member of the Local Consultative Disaster Emergency Response Group, IFRC contributes to the humanitarian response decisions.

There has been an acknowledgement of IFRC being proactive in establishing coordination with Red Cross Movement partner's in-country and its traditional partners including ECHO and MoFDM to respond to any humanitarian crisis. Under the purview of the pre-disaster agreement signed between the Red Cross Movement partners in-country, IFRC works with BDRCS to explore support to its response.

The Disaster Management Unit (DMU) at Kuala Lumpur provides technical support. In addition, the South Asia regional office (SARD) in Delhi provides technical support to the country team as and when required. The DMU team extends support to BDRCS in maintaining liaison and coordination.

Walter Cotte
Under Secretary General
Programme Services Divisio

Bekele Geleta
Secretary General

Contact information

For further information specifically related to this operation please contact:

Bangladesh Red Crescent Society:

- BMM Mozharul Huq, ndc, Secretary General, phone: +88 02 935 2226, email: secretarygeneral@bdracs.org

IFRC Bangladesh country office:

- Tsehayou Seyoum, Head of Office, phone: +88 02 933 7314, fax: +88 02 934 1631, email: tsehayou.seyoum@ifrc.org

IFRC South Asia regional office:

- Azmat Ulla, Head of Regional Office, phone: +91 11 26154021-24, fax: +91 11 261 54025, email: azmat.ulla@ifrc.org
- Enkas Chau, Regional Preparedness and Resilience Coordinator, phone: +91 11 26154021-24, email: enkas.chau@ifrc.org

IFRC Zone:

- Mathew Schraeder, Operations coordinator, phone: +603 9207 5735, mobile: +6019 6200 758, email: mathew.schraeder@ifrc.org
- Al Panico, Head of Operations, phone: + 603 9207 5704, email: al.panico@ifrc.org
- Alan Bradbury, Head of Resource Mobilization and PMER, phone: +6 03 9207 5775, email: alan.bradbury@ifrc.org
Please send all funding pledges to zonerm.asiapacific@ifrc.org
- Florent Chane, Zone Logistics Coordinator, Phone: +6 012 298 9752, email: florent.chane@ifrc.org



Click here

1. **Emergency Appeal budget [below](#)**
2. **Map [below](#)**
3. **Click [here](#) to return to the title page**

How we work

All IFRC assistance seeks to adhere to the Code of Conduct for the International Red Cross and Red Crescent Movement and Non-Governmental Organizations (NGO's) in Disaster Relief and the Humanitarian Charter and Minimum Standards in Disaster Response (Sphere) in delivering assistance to the most vulnerable.

The IFRC's vision is to inspire, encourage, facilitate and promote at all times all forms of humanitarian activities by National Societies, with a view to preventing and alleviating human suffering, and thereby contributing to the maintenance and promotion of human dignity and peace in the world.

www.ifrc.org
Saving lives, changing minds.



The IFRC's work is guided by Strategy 2020 which puts forward three strategic aims:

1. Save lives, protect livelihoods, and strengthen recovery from disaster and crises.
2. Enable healthy and safe living.
3. Promote social inclusion and a culture of non-violence and peace.

EMERGENCY APPEAL

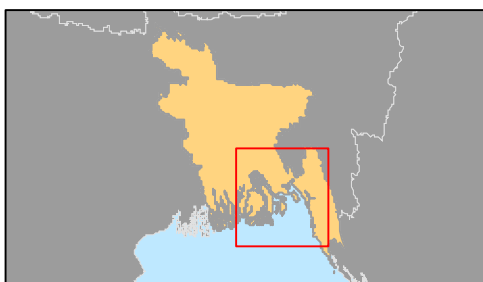
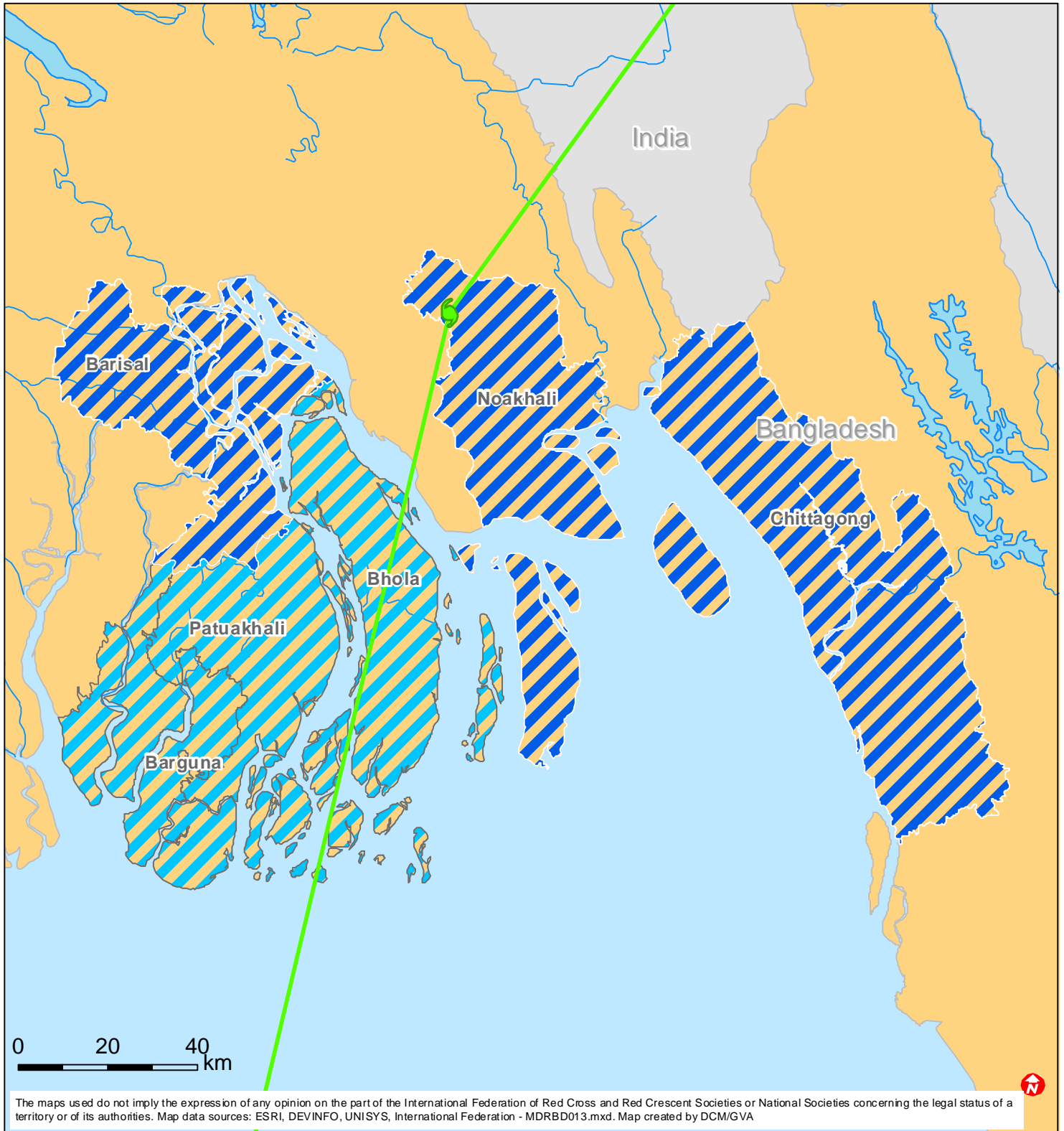
24/5/2013



MDRBD013 Bangladesh : Tropical Cyclone Mahasen

Budget Group	Multilateral Response	Inter-Agency Shelter Coord.	Appeal Budget CHF
Shelter - Relief	213,684		213,684
Shelter - Transitional	789,474		789,474
Clothing & Textiles	65,789		65,789
Food	131,579		131,579
Water, Sanitation & Hygiene	404,342		404,342
Cash Disbursements	526,316		526,316
Total RELIEF ITEMS, CONSTRUCTION AND SUPPLIES	2,131,184	0	2,131,184
Computer & Telecom Equipment	10,526	1,000	11,526
Office/Household Furniture & Equipment	10,526		10,526
Total LAND, VEHICLES AND EQUIPMENT	21,053	1,000	22,053
Storage, Warehousing	1,316		1,316
Distribution & Monitoring	9,013		9,013
Transport & Vehicle Costs	19,737	1,300	21,037
Total LOGISTICS, TRANSPORT AND STORAGE	30,066	1,300	31,366
International Staff	48,000	16,950	64,950
National Staff	80,526	3,000	83,526
National Society Staff	69,276		69,276
Volunteers	9,737		9,737
Total PERSONNEL	207,539	19,950	227,489
Consultants	17,105	20,950	38,055
Professional Fees		3,600	3,600
Total CONSULTANTS & PROFESSIONAL FEES	17,105	24,550	41,655
Workshops & Training	63,158		63,158
Total WORKSHOP & TRAINING	63,158	0	63,158
Travel	11,842	3,500	15,342
Information & Public Relations	9,211		9,211
Office Costs	35,263	1,050	36,313
Communications	9,211	1,250	10,461
Financial Charges	10,526		10,526
Other General Expenses		1,100	1,100
Shared Office and Services Costs	19,327		19,327
Total GENERAL EXPENDITURES	95,380	6,900	102,280
Programme and Services Support Recovery	166,757	3,491	170,247
Total INDIRECT COSTS	166,757	3,491	170,247
NET EMERGENCY APPEAL NEEDS	2,732,242	57,191	2,789,432



Bangladesh: Tropical storm Mahasen



-  Districts likely to be affected by storm
-  Requirement being identified