

www.ifrc.org
Saving lives,
changing minds.

Emergency appeal Cameroon: Population Movement

 International Federation
of Red Cross and Red Crescent Societies

Emergency appeal n° MDRCM015 GLIDE n° [OT-2013-000102-CMR](#) 3 September 2013

This Emergency Appeal seeks CHF 456,541 in cash, kind, or services to support the Cameroon National Society to assist some 6,500 beneficiaries (1,500 families) for six months: some 5,000 Nigerian refugees (1,000 families) in the Far North Region of Cameroon, and 1,500 refugees (500 families) from the Central African Republic (CAR) in the East Region of Cameroon. The operation will be completed by the end of February, 2014. A Final Report will be made available by end of May 2014 (three months after the end of the operation).

CHF 65,479 was allocated from the International Federation of Red Cross and Red Crescent (IFRC) Disaster Relief Emergency Fund (DREF) to support this operation. Un-earmarked funds to reimburse DREF are encouraged.

Summary:

Far North Region of Cameroon: Nigerian refugees:

A period of instability and unrest prompted by clashes between the Nigerian army and Boko Haram (extremist militant Islamist group) has caused thousands of people to flee the country in search of protection, shelter and assistance. Some 3,323 refugees, mostly women and children, have been pre-registered at the border between Cameroon and Nigeria. A lack of access and security is preventing the delivery of assistance to this group. Local authorities in the Mayo Sava District have identified 4,805 refugees in need of assistance, and the UN High Commissioner for Refugees (UNHCR) is in the process of determining refugee status. UNHCR has plans to build a camp that can host up to 10,000 people. To date 833 people (195 families) have been transferred to a refugee camp set up by UNHCR in Minawao, some 50 km from Maroua, headquarters of the Far North Region. This operation plans to provide assistance through emergency shelter, non-food items (NFIs), hygiene and sanitation promotion, and emergency health and care.

East Region of Cameroon: CAR refugees: With insecurity and unrest affecting the Central African Republic (CAR), in late March 2013 further influxes of refugees arrived from the Central African Republic (CAR) into the Eastern Region of Cameroon. The IFRC and the Cameroon Red Cross (CRC) have been registering refugees and providing first aid with the CRC ambulance. The current number of CAR refugees, according to the CRC, stands at 1,480 people (some 300 families), with 188 vulnerable persons. These refugees were temporarily resettled in Garoua-Boulai before being moved to Nandoungu where local administrative and traditional authorities have provided space for a makeshift resettlement site. Through this appeal, the CRC, with the support of the IFRC, intend to provide emergency shelter for incoming refugees who lack the resources to construct shelter. Refugees are to be relocated to new sites because of concerns over their proximity to the border and the lack of certain basic infrastructure at Nandoungu. Semi-durable shelters will be built by the beneficiaries at these sites, with the support of CRC and the IFRC.



Central Africa Representation of the IFRC (CARREP) staff on a tour of the Minawao refugee camp; Source: IFRC

The rapidly changing context of the situation makes scenario planning difficult and precludes the development of an exit strategy. The Cameroon Red Cross and the Central Africa Regional Representation are currently planning at this stage for a six month operation while discussions are carried out with partners and Government authorities to assess future development and adjust the operation accordingly. Based on the on-going monitoring, this appeal maybe revised or extended depending on the needs and the response by other stakeholders.

[<click here for Emergency Appeal Budget; here for map of the affected area; or here for contact details>](#)

The situation

Far North Region of Cameroon: Nigerian refugees: Responding to escalating hostilities in northern Nigeria between the Government and the Islamist militant group Boko Haram thousands of people fled the country and sought refuge in the Far North Region of neighbouring Cameroon. Reports indicate that 3,323 refugees, mostly women and children, have been pre-registered at the border between Cameroon and Nigeria. In total 833 (195 families) have been transferred to a refugee camp set up by the United Nations High Commission for Refugees (UNHCR) in Minawao, situated some 50 km from Maroua, headquarters of the Far North Region. Refugees are living in 25 mobile warehouses built by UNHCR. Three weeks ago, these warehouses were damaged by strong winds. Two have been repaired and 11 more need repair. There is a need to upgrade this accommodation.

Table showing number of refugees in the Minawao refugee camp as of 23 August, 2013

Gender/Age	Number	Total
Women above 18	214	467
Girls below 18	253	
Men above 18	119	363
Boys below 18	244	
New births	03	03
Total		833

Camp management has been handed over to a local NGO known as Public Concern, however they have limited experience in the field of humanitarian assistance in general; and shelter in particular. The UNHCR has deployed a site planner to plan the site on which family tents will be set up. Negotiations are still going on with local authorities and the owners of the land to be compensated since portions of the site harbour crops. According to the UNHCR site planner, they intend to build a camp that can host 10,000 people with 660 persons per block. It is believed that fighting in Nigeria will continue and more refugees may move as the conflict continues. With planned UNHCR transfers in the days ahead, the number of refugees in the camp is expected to rise; which is why this appeal plans to assist more people than the number currently in the camp.

UNICEF has constructed 32 latrines, 13 showers and provided 25 garbage bins in the camp, while Public Concern has built ten latrines, and eight showers. But with the onset of the rainy season, these latrines have been flooded, while some are already full, thus, refugees are resorting to open defecation. If prompt measures are not taken, this may lead to a cholera outbreak. The refugees have organized themselves to clean the latrines and surroundings, but lack sanitation equipment and specialized knowledge on hygiene and sanitation.

Common health challenges in the camp include malaria, lung and respiratory illnesses, and body itches. UNICEF has also provided 1,000 long-lasting insecticide-treated mosquito nets (LLINs) to the health authorities in Maroua, for distribution to the refugees. UNHCR has also promised more nets. So far, the nearest health unit to the camp; the Gadala integrated health centre is providing medical care to the refugees, though it is overburdened and lack a viable building. So far, six refugees have been hospitalized at the Mokolo district hospital, two discharged and two fatalities recorded. This hospital is about 18 km from the camp. So far, two babies have been born in the camp, with the help of a refugee community health worker. They say there was no health worker at the Gadala health centre at the time children were born. The emergency kit sent by the CRC is running short of supplies and needs to be replenished.

A borehole, with a water supply capacity of 20,000 litres per day, has been constructed in the camp. The water is stored in two water bladders of 10,000 litres each by UNICEF. The water is collected through standpipes connected to pipes. However, with the arrival of more refugees; there will soon be water shortage.

According to UNHCR, with on-going clashes occurring in northern Nigeria further refugee arrivals are anticipated in the days ahead especially from Bawa, a locality in Maiduguri. The latest clashes were reported during the night of 21–23 August, 2013. An additional 294 new people crossed at Amchide and Madougouri, of which 137 people are ready to join the camp.

The local authorities of Mayo Sava Division have sent a list of 4,805 refugees to the UNHCR. According to this list, 4,200 of them are in two locations; Amchidé and Kolofata, while 600 others are in Waza, all in the Far North Region of Cameroon. These people were registered by the local authorities, and the UNHCR is trying to determine whether they are Cameroonians or not, and why they are there.

With the continued fighting on the Nigerian side, the total number of persons pre-registered by the UNHCR in Mayo Sava Division increased from 1,881 to 1,966 and their transfer to the camp that was scheduled, initially scheduled the 13 August 2013, was moved to 24 August 2013 and is yet to actually take place. In the meantime, pre-registration is still going on, while further transfers are being planned. Partial transfer has taken place with trucks hired by UNHCR. The UNHCR has expressed the need for more trucks to help transfer refugees and their belongings from the border to the camp. To date, six unaccompanied children have also been identified among the refugees.

Given the precarious security situation, UNHCR workers are always escorted by armed guards.

East Region of Cameroon: CAR refugees: A period of unrest in the March, 2013 resulted in thousands of Central Africans to seek protection, shelter, and assistance in neighbouring countries, including Cameroon. Most of the refugees are located in Garoua-Boulaï for the time being. Cameroonian authorities have made preparations to welcome the refugees, in compliance with the international principle of non-refoulement. In response to this influx, local administrative and traditional authorities, the local population, Cameroon Red Cross (CRC) staff and volunteers, the International Federation of Red Cross and Red Crescent Societies (IFRC) and the UNHCR came together to identify these refugees, move them to a temporary site, provide nutritional support and health care.

The large number of people found at the transit site posed risks of overcrowding and insecurity. On 28 March 2013, the decision was taken, in consultation with administrative authorities, to move, as soon as possible, the refugees to a site that is further away from the border and provide assistance, in line with UNHCR standards. The Nandougué site, situated some 45 km from the border town of Garoua-Boulaï was identified in agreement with local traditional leaders. The Nandougué site now hosts a total of 1080 refugees from the Central African Republic.

Number of persons in the Nandougué site (UNHCR, March 2013):

Beneficiary type	Number	Details
Households	706	
Women	530	49.07%
Men	550	50.92%
Total	1080	
Children	315	153 are aged 0 -5 years
Unaccompanied children	8	
Pregnant women	15	
Breast feeding mothers	45	
Handicapped	11	
Elderly	3	
Critically ill	3	
People with special needs	11	

Currently, CAR refugees are to be relocated from Nandoungué to new sites, namely Zembe Borongo, Bétaré-Oya, Guiwa Yangamo and Mandjou as soon as the Red Cross operation is approved. It is on these sites that semi-durable shelters will be built by the beneficiaries, with the support of the CRC and the IFRC.

Coordination and partnerships

Far North Region of Cameroon: Nigerian refugees: Coordination meetings have been scheduled for every Monday. The third meeting took place on 19 August 2013, at the WHO office in Maroua. The meeting brought together the IFRC, CRC, UNHCR, UNICEF, UNFPA, the French Red Cross and Public Concern. During this meeting, an update of the situation of the refugees was presented and each stakeholder presented what they have been doing so far to assist the refugee population. At the 19 August meeting, it was reported there were 833 individuals living at the Camp (830 plus three new births in the last week). A further 1,966 people had been pre-registered and awaiting possible transfer to the camp; the next transfer of 1881 people was planned for 24 August 2013, by UNHCR, but has not happened yet.

UNICEF has provided all the required camp facilities such as latrines, showers, garbage bins, hand washing water near latrines, and has also promised to provide mosquito nets. A construction specialist has also been deployed by UNICEF to remedy the overflowing latrines and evacuation of waste water from the latrines. UNICEF has also built a borehole and installed two water bladders with a water supply capacity of 10,000 litres each per day. Another borehole is planned, along with bladder and standpipes with a capacity of 10,000 litres, thus bringing the quantity of water supplied to the camp to 30,000 litres per day.

The French Red Cross is providing water heaters, syringes, drugs for the Gadala health centre, and also subsidizes the treatment of refugees. The French Red Cross is also providing training for Mokolo district hospital staff on the screening and management of malnutrition. The Gadala health centre staff will also be trained in malnutrition control and treatment, and refugee children between 6 to 59 months will be screened for malnutrition.

Public Concern has so far been managing the Minawao camp, while UNHCR is collecting data on the refugee population both at the border and in the camp and organizing the camp. UNHCR has deployed a site planner to plan the new camp site, and has also distributed non-food items such as 20 litre jerry cans, 10 litre jerry cans, sleeping mats, and blankets. UNICEF will provide one hygiene kit (shovel, rake, broom, machete, hoes, wheelbarrow, etc, including a bar of 200g soap) per family per month.

The economic affairs adviser at the Nigerian High Commission in Cameroon also visited the camp and donated five 50 kg bags of rice, ten cartons of 200g soap, three litres of medical alcohol, and two cartons of assorted medications. The Nigerian authorities refused to have any intermediary distribute the gift. The refugees went ahead to distribute the items among themselves.

East Region of Cameroon: CAR refugees: UNHCR has provided essential drugs and medical equipment and material to the camp infirmary. This has greatly improved working conditions in the health centre and the health conditions of the refugees in the camp.

The Cameroon police and military forces have also been facilitating refugee identification, while the Divisional Officer is on hand for to oversee the process.

The Institut de Recherche pour le Developement has distributed NFIs (including sleeping mats, blankets, jerry cans, buckets, soap, underwear, hygiene kits to women of childbearing age, clothes, and kitchen sets) to refugees.

UNHCR shelter support will provide 350 shelters and this Emergency Appeal will provide the balance of 150 required shelters. The Cameroon Red Cross will continue other activities (distribution of food and non-food items, promotion of hygiene, education for health, care, community services, etc.) through bilateral support through the UNHCR.

Red Cross and Red Crescent action

Far North Region of Cameroon: Nigerian refugees

The CRC has been actively involved in the registration of refugees and psychosocial support. Currently, the situation is somehow stable and four volunteers are still on standby to assist the refugees.

The CRC has also handed over four first aid kits to volunteers in charge of transferring refugees from various sites to the camp. These kits are also being used at the health post that has been set up in the camp. CRC volunteers have also carried out sensitization on hygiene and sanitation and on the need to go to the health post or health centre for treatment. Screening of cases of malnutrition is also being carried out in collaboration with the French Red Cross (FRC).

The FRC on its part is caring for malnourished children with or without medical complications and providing equipment and supplements (full peanuts, F75 and F100 therapeutic milk) to the Mokolo CNTI (Centre de Nutrition Thérapeutique Interne). It has deployed two volunteers and a nursing aide to the Mokolo CNTI to supervise, monitor, sensitize, and collect data on the number of malnourished children. They also run the CNA (Centre de Nutrition Ambulatoire) that cares for malnourished children without complications. The FRC is also ready to fuel an ambulance for the transfer of malnourished cases to hospital.

CRC volunteers will be involved in awareness raising on health message and hygiene promotion, health care and the construction of infrastructure will be done by other partners such as UNICEF and Public Concern, while UNHCR will be in charge of overall coordination.

The appeal aims to target 1,000 families, which represents half of the 2,000 families expected to arrive in the near future. Latrines and water supply will be constructed by UNICEF. Red Cross support will include shelter, health and hygiene promotion and maintenance of infrastructure.

East Region of Cameroon: CAR refugees

The CRC has been receiving, pre-registering and identifying the refugees. The CRC has also brought in a health team to provide first aid to the refugees and refer the critically sick to hospitals. When the refugees were being moved to the resettlement site, this team accompanied them in order to continue assisting them, despite their limited means. The CRC has also provided a tent that serves as an infirmary.

Since a measles epidemic was recently reported in the CAR, staff of the Nandougué integrated health centre, in collaboration with the CRC and with the support of the IFRC, organized a measles immunization campaign. The campaign targeted children aged between 0 to 15 years in a bid to avoid an epidemic in the camp. The team also conduct immunization sessions in the camp once per month, following the advanced strategy, for children aged between zero to five years, according to the Expanded Program on Immunization (EPI) protocol of the Cameroon Ministry of Public Health. Awareness raising on good health practices is also carried out each week on several themes by the same team.

Latrines will be provided by Institut de Recherche pour le Développement (IRD) and water supply amenities are constructed by Première Urgence for CAR refugees.

The needs

Far North Region of Cameroon: Nigerian refugees

Beneficiary selection:

Since it is impossible to assist refugees that are still at the border, only those that have been registered and are already in the UNHCR camp will be provided assistance. This amounts to some 3,323 people. The CRC and the IFRC seek ways and means of providing first aid assistance to those that have just crossed the border and are being pre-registered at safe border points.

There are currently 833 people in the camp and 1,960 people (out of the 3,323 are pre-registered) still waiting to be transferred to the camp. However, fighting is still going on between Nigerian regular forces and Boko Haram militants and more refugees keep coming in. Between the 21 and 24 August 2013, 294 new refugees were pre-registered. With the on-going fighting, more refugees are expected and it is estimated that their numbers will exceed 10,000 hence the reason why UNHCR is planning a camp of that capacity.

Immediate needs: Hygiene and sanitation equipment are lacking in the camp. The refugees require and deserve separate shelters so as to enjoy some privacy and improve hygiene conditions that exist from overcrowding in the current warehouses. Thus the refugees need assistance in the area of shelter, water and sanitation, hygiene promotion and emergency health. The capacity of CRC volunteers should be strengthened in the area of water and sanitation and shelter construction. In total, 60 volunteers will be involved under this component of the operation.

Longer-term needs: With the certain arrival of more refugees, the camp set up by UNHCR at Minawao will need to be extended. Negotiations between UNHCR and the local authorities are on-going for the acquisition of more land for camp extension. This implies that the construction of more emergency shelter will be required, which provides an opportunity for the CRC and IFRC to provide more emergency shelter. In the longer term, water and sanitation sector is under the responsibility of UNICEF.

East Region of Cameroon: CAR refugees

Beneficiary selection: Regarding CAR refugees, most of them arrived in March 2013. They were first of all accommodated in schools, and then quickly transferred to camps built to for that purpose. At the outset, they were not many, however their numbers have progressively increased to 1,480 people. To date, new refugees are still coming in (1,500 individuals presently).

Immediate needs: The 1,480 CAR refugees need transitional shelter as it is evident that the refugees will be displaced for some time.

With the increasing number of refugees, living conditions in the camp have deteriorated and related basic amenities are insufficient. UNHCR has decided to relocate these refugees to alternative sites where living conditions are better, since the site currently used lacks appropriate infrastructure. Of the total number of families to be assisted, UNHCR and its partners are able to assist the majority, however there is a shelter gap for 150 families and this support has been requested from the Red Cross.

15 volunteers will be trained and deployed under this component of the operation.

For relocation of refugees to Zembe Borongo, Bétaré-Oya, Guiwa Yangamo and Mandjou, it will be necessary to support beneficiaries with provision of shelter material and construction of shelters, including mosquito nets, hygiene promotion activities and health education. Relocation will start immediately.

The operation will be supported by a generalist RDRT for a duration of three months.

The proposed operation

Emergency shelter and non-food items	
Outcome 1: Contribute to meeting the immediate shelter and essential non-food item needs of 1,000 Nigerian refugee families (5,000 persons) in the Minawao refugee camp.	
Outputs (expected results)	Activities planned
1,000 families provided with materials and training required to construct emergency shelters.	<ul style="list-style-type: none"> • Mobilise/train 60 CRC volunteers in the construction of emergency shelter to ensure knowledge transfer to beneficiaries, as well as on relief distributions and logistics practices; • Purchase, transport and deliver (or make available for pick-up) shelter materials to camp; • Train refugees in the construction of emergency shelters, based on the construction of model shelters and in line with SPHERE standards; • Distribute basic tools required for the construction of emergency shelters; • Distribute two tarpaulins per household, 20 m of rope per household for fixing and other necessary materials (Planks, nails, measuring tapes, lines, hammers, ladders, pickaxes, spades) • Monitor and supervise the construction of emergency shelter and ensure their upkeep as the rainy season has already started. • Construct family shelters
1,000 families are provided with essential household items (NFIs).	<ul style="list-style-type: none"> • 60 volunteers (mentioned in the activities above will distribute relief supplies and control supply movements from point of dispatch to end user. Each family will receive: <ul style="list-style-type: none"> - 2 blankets - 2 sleeping mats or mattresses - 1 kitchen kit - 1 plastic kettle - 1 solar lamp - 1 bucket with lid - 1 collapsible jerry can • Monitor and evaluate the relief activities and provide reporting on relief distributions; • Develop an exit strategy.
Outcome 2: The immediate sheltering needs of the 150 most vulnerable CAR refugee families (750 people) in the East Region of Cameroon are met.	
Outputs (expected results)	Activities planned
The 750 most vulnerable refugees who still sleep in the open have access to emergency shelter, and their living conditions are improved.	<ul style="list-style-type: none"> • Identification of the 150 most vulnerable refugee families who still sleep in the open; • Procure shelter kits and transporting them to the refugees' settlement places in East region of Cameroon; • Train 15 volunteers on distribution; • Distribution of the shelter kits by the 15 trained volunteers; • Support in the erection of shelter by beneficiaries; • Monitoring, evaluation and reporting on emergency shelter activities

Water, Sanitation and Hygiene promotion	
Outcome: Contribute to facilitating access to proper sanitation facilities and hygiene promotion for 1,000 Nigerian refugee families (5,000 persons) in the Minawao refugee camp.	
Outputs (expected results):	Activities planned:
Adequate sanitation in line with minimal Sphere standards in terms of quantity and quality is provided in camp.	<ul style="list-style-type: none"> • Conduct refresher training for 15 CRC volunteers on emergency sanitation. • Using the community mobilisation approach, regionally procured sanitation equipment (wheelbarrows, rakes, nose masks, brooms, spades, garbage cans, boots, hand gloves, raincoats, first kits, aprons and pickaxes) will be distributed to refugees to ensure hygiene in camp.
Hygiene promotion activities which meet Sphere standards in terms of the identification and use of hygiene items provided to target population.	<ul style="list-style-type: none"> • Conduct needs assessment: define hygiene issues and assess capacity to address the problem. • Select target groups, key messages, and methods of communicating with beneficiaries (mass media and interpersonal communication). • Develop a hygiene communication plan. • Train 15 volunteers to implement activities from communication plan. • Assess progress and evaluate results. • Engage community on design and acceptability of water and sanitation facilities. • Construct or encourage construction and maintenance of hand washing facilities in targeted communities. • Monitor and evaluate the WASH activities and provide reports.

Emergency health and care	
Outcome: Ensure that immediate health risks on the refugee population are reduced for 1,000 Nigerian refugee families (5,000 persons) in Minawoa refugee camp.	
Outputs (expected results)	Activities planned
Evaluation of immediate health and sanitary risks using prescribed IFRC directives among refugee population.	<ul style="list-style-type: none"> • Train 20 community health volunteers how to evaluate the health environment outlining the immediate health risks the refugee population could be faced with. • Continuous monitoring and surveillance of the health situation.
Ensuring that beneficiary population is reached with health promotion activities, community disease prevention activities	<ul style="list-style-type: none"> • Train/Refresh 15 RC volunteers on CBHFA and ECV. • Undertake health promotion and disease prevention activities among refugee population in camp; • Distribute mosquito nets (2 per family) and sensitise communities on their use. • Put in place a platform for the exchange of health data and surveillance information with other stakeholders in the field. • Work in close collaboration with other health technicians in the field. • Distribute feminine hygiene - sanitary pads to the Nigerian refugees
Ensure that beneficiary population is provided with assistance and has access to immediate health care and rapid provision of drugs for illnesses.	<ul style="list-style-type: none"> • Provision of first aid to incoming refugees at the border services by 15 volunteers. • Undertake regular visits to the refugee camp and provide necessary medical assistance and advice to refugees directing them to nearby health facilities for immediate and appropriate care. • Undertake first aid and refer refugees to health facilities where they can have emergency assistance. • Facilitate urgent emergency transportation of refugees to health facilities where they can have appropriate care.
Ensure the psychosocial support to refugees	<ul style="list-style-type: none"> • Train 10 volunteers on PSP support. • Ensure the psychosocial support.
Outcome: Ensure that immediate health risks on the refugee population are reduced for 500 CAR refugee families (1,500 persons) in Zembe Borongo, Bétaré-Oya, Guiwa Yangamo and Mandjou.	

Ensuring that beneficiary population is reached with health promotion activities, community disease prevention activities.	<ul style="list-style-type: none"> • Train/Refresh 12 RC volunteers on CBHFA and ECV (3 per camp). • Undertake health promotion and disease prevention activities among refugee population in Zembe Borongo, Bétaré-Oya, Guiwa Yangamo and Mandjou. • Distribute mosquito nets (2 per family) and sensitise communities on their use. • Participate in the exchange of health data and surveillance information with other stakeholders in the field. • Work in close collaboration with other health technicians in the field.
Ensure the psychosocial support to refugees.	<ul style="list-style-type: none"> • Train 8 volunteers on PSP support (2 per camp). • Ensure the psychosocial support to CAR refugees in Zembe Borongo, Bétaré-Oya, Guiwa Yangamo and Mandjou.

Logistics

Logistics will support the operations, sourcing and delivering relief items in line with operational priorities. Regional stock will be used immediately (most items required are already in stock in Yaoundé according to the latest stock report) and the items will be replaced from Dubai. Other items (particularly construction materials) will be purchased in local markets in line with the IFRC procurement procedures.

In close coordination with GLS Dubai Office, the Zone Logistics Unit (ZLU) in Nairobi will provide logistical support and coordinate procurement and mobilization of items and material included in this emergency Appeal. All logistics activities will follow IFRC procedures and will be conducted in a transparent and cost-efficient manner.

Communications – Advocacy and Public information

The aim will be to maintain a regular flow of reliable information, between the field and other stakeholders. This will be vital for fundraising, awareness of the work of the Red Cross and to maintain a strong profile of emergency operations. During an operation, communication between affected population and structures of the Red Cross, media and donors is an essential mechanism to ensure greater quality operation, accountability and transparency. Communications activities described here are intended to support the national society to improve their communication skills and develop appropriate communication tools.

These activities are conducted in close coordination with the IFRC's Communication Unit in Cameroon.

Activities include:

- Written updates to the IFRC communications team, for further dissemination to media and through IFRC channels such as the website
- Regular photographs to illustrate the continuing work of the Red Cross – sent to the IFRC communications team
- Regular liaison with local and national media in Cameroon to maintain communications about the work of the Red Cross

Capacity of the National Society

CRC is present throughout the territory with its 58 Divisional committees. Today, the number of volunteers is estimated at 40,000, of which up to 10,000 are trained first aiders. The CRC regularly holds its Ordinary General Assembly every four years, with the last held in October 2012.

At the national headquarters there is an operational management structure with five technical departments. The CRC recently formed a competent National Disaster Response Team (NDRT).

Currently, CRC has a pool of trained shelter volunteers that can be deployed to any region of the country. With support from the Swiss Red Cross, a workshop was also held with 20 volunteers to train them in shelter construction.

Capacity of the IFRC

IFRC's regional representation for Central Africa (CARREP), in coordination with the Africa Zone office provides technical and material support to the National Society with the supply of relief materials, development of action plans, logistics and human resources as needed. The regional representation staffing

includes a regional programme coordinator, a regional health coordinator and regional disaster management coordinator, a regional officer for HIV, and a team providing support services. Additional technical support is available from the Africa zone office in disaster management, health and care, organizational development, planning, monitoring, evaluation and reporting (PMER), finance and administration, and mobilization of human resources as needed.

Security

The general security situation in Cameroon is stable. But the security situation along the border is not encouraging for now. It is reported that Boko Haram insurgents are present in the area, thus posing a security threat to any humanitarian endeavours. UNHCR staff are obliged to work under tight protection provided by Cameroon armed forces that have been positioned along the border. Thus, if the CRC and the IFRC are to intervene along the border, they will need special protection too.

Budget summary

See attached budget (Annex 1) for details.

Walter Cotte
Under Secretary General
Programme Services Division

Bekele Geleta
Secretary General

Contact information

For further information specifically related to this operation please contact:

- **IFRC Regional Representation:** Denis Duffaut, Regional Representative for Central Africa; Yaoundé; phone: (office) +237 22 21 74 37; (mobile) +237 77 11 77 97; fax: +237 22 21 74 39; email: denis.duffaut@ifrc.org
- **IFRC Africa Zone:** Daniel Bolaños, Disaster Management Coordinator for Africa; Nairobi; phone: +254 (0)731 067 489; email: daniel.bolanos@ifrc.org
- **IFRC Geneva:** Christine South, Operations Quality Assurance Senior Officer; phone: +41.22.730.45 29; email: christine.south@ifrc.org
- **IFRC Zone Logistics Unit (ZLU):** Rishi Ramrakha, Head of zone logistics unit; Tel: +254 733 888 022/ Fax +254 20 271 2777; email: rishi.ramrakha@ifrc.org

For Resource Mobilization and Pledges:

- **IFRC West and Central Africa hub:** Elisabeth Seck, Resource Mobilization Officer, Dakar; phone:+221 33 869 36 60; mobile: +221 77 450 59 49; email: elisabeth.seck@ifrc.org

For Performance and Accountability (planning, monitoring, evaluation and reporting):

- **IFRC Africa Zone:** Robert Ondrusek, PMER/QA Delegate for Africa; Nairobi; phone: +254 731 067277; email: robert.ondrusek@ifrc.org

How we work

All IFRC assistance seeks to adhere to the Code of Conduct for the International Red Cross and Red Crescent Movement and Non-Governmental Organizations (NGOs) in Disaster Relief and the Humanitarian Charter and Minimum Standards in Disaster Response (Sphere) in delivering assistance to the most vulnerable.

The IFRC's vision is to inspire, encourage, facilitate and promote at all times all forms of humanitarian activities by National Societies, with a view to preventing and alleviating human suffering, and thereby contributing to the maintenance and promotion of human dignity and peace in the world.

www.ifrc.org
Saving lives, changing minds.



The IFRC's work is guided by Strategy 2020 which puts forward three strategic aims:

1. Save lives, protect livelihoods, and strengthen recovery from disaster and crises.
2. Enable healthy and safe living.
3. Promote social inclusion and a culture of non-violence and peace.

EMERGENCY APPEAL

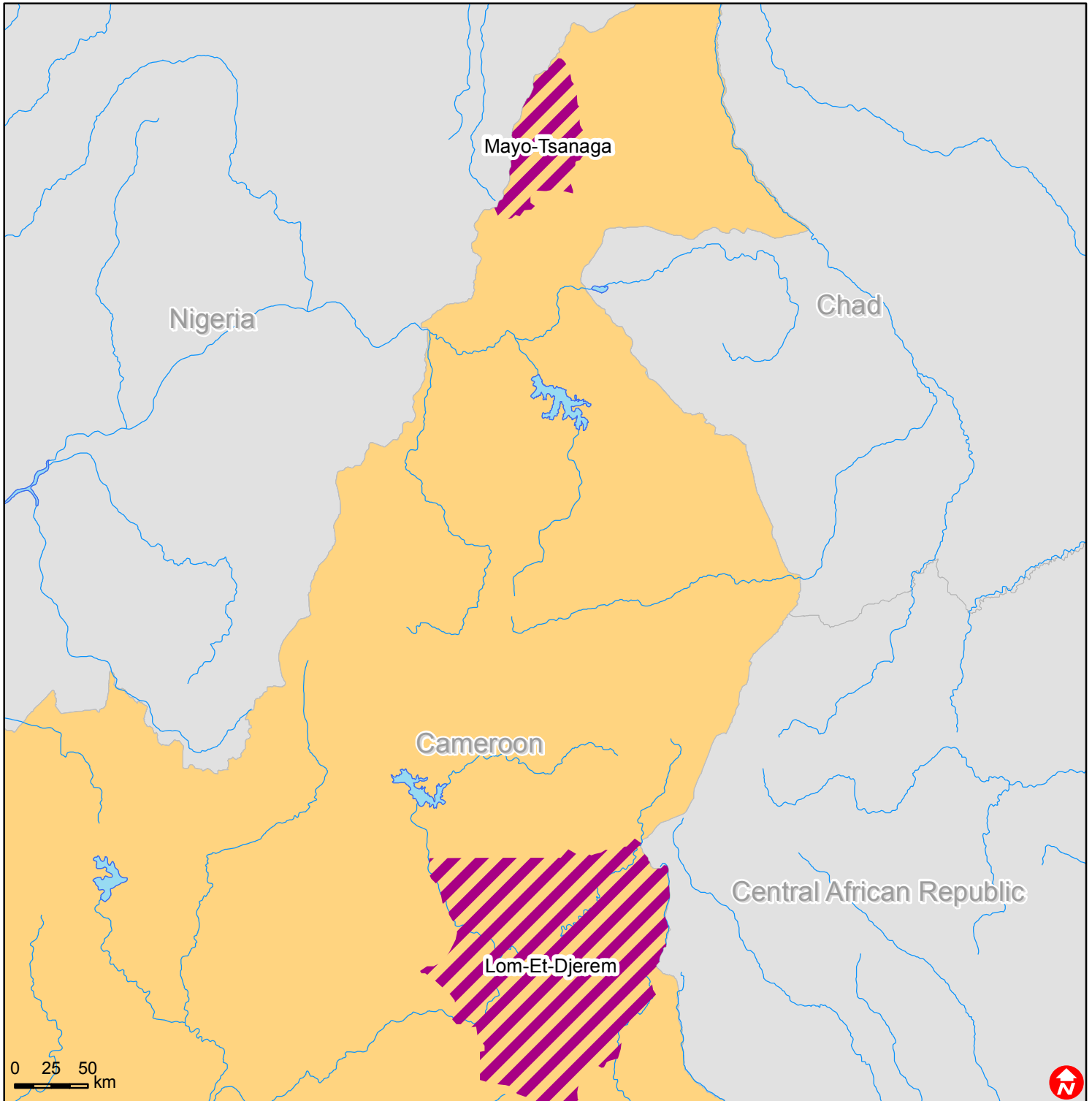
APPEAL Cameroon - Population movement (MDRCM015)

03/09/2013

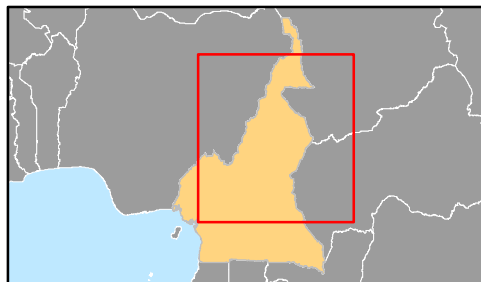
Budget Group	Multilateral Response	Inter-Agency Shelter Coord.	Bilateral Response	Total budget (CHF)
Shelter - Relief	137,500			137,500
Shelter - Transitional				
Construction - Housing				
Construction - Facilities				
Construction - Materials				
Clothing & Textiles	49,800			49,800
Food				
Seeds & Plants				
Water, Sanitation & Hygiene	0			0
Medical & First Aid	0			0
Teaching Materials	0			0
Ustensils & Tools	42,500			42,500
Other Supplies & Services	1,800			1,800
Emergency Response Units				
Cash Disbursements				
Total RELIEF ITEMS, CONSTRUCTION AND SUPPLIES	231,600	0	0	231,600
Land & Buildings				
Vehicles Purchase	2,000			2,000
Computer & Telecom Equipment	1,500			1,500
Office/Household Furniture & Equipment	8,000			8,000
Medical Equipment				
Other Machinery & Equipment	0			0
Total LAND, VEHICLES AND EQUIPMENT	11,500	0	0	11,500
Storage, Warehousing	4,500			4,500
Distribution & Monitoring	4,000			4,000
Transport & Vehicle Costs	21,100			21,100
Logistics Services	6,336			6,336
Total LOGISTICS, TRANSPORT AND STORAGE	35,936	0	0	35,936
International and Regional Staff	45,000			45,000
National Staff	4,750			4,750
National Society Staff	14,845			14,845
Volunteers	42,360			42,360
Total PERSONNEL	106,955	0	0	106,955
Consultants				
Professional Fees				
Total CONSULTANTS & PROFESSIONAL FEES	0	0	0	0
Workshops & Training	10,799			10,799
Total WORKSHOP & TRAINING	10,799	0	0	10,799
Travel	6,000			6,000
Information & Public Relations	5,200			5,200
Office Costs	1,645			1,645
Communications	9,050			9,050
Financial Charges	2,000			2,000
Other General Expenses				
Shared Support Services	7,992			7,992
Total GENERAL EXPENDITURES	31,887	0	0	31,887
Partner National Societies				
Other Partners (NGOs, UN, other)				
Total TRANSFER TO PARTNERS	0	0	0	0
Programme and Supplementary Services Recovery	27,864	0	0	27,864
Total INDIRECT COSTS	27,864	0	0	27,864
TOTAL BUDGET	456,541	0	0	456,541
Available Resources				
Multilateral Contributions				
Bilateral Contributions				
TOTAL AVAILABLE RESOURCES	0	0	0	0
NET EMERGENCY APPEAL NEEDS	456,541	0	0	456,541



Cameroon: Population Movement



The maps used do not imply the expression of any opinion on the part of the International Federation of Red Cross and Red Crescent Societies or National Societies concerning the legal status of a territory or of its authorities. Map data sources: ESRI, DEVINFO, International Federation - MDRCM015.mxd
Map produced by DMU/NBO



 Affected areas