

www.ifrc.org
Saving lives,
changing minds.

Disaster relief emergency fund (DREF) Chad: Population movement

 International Federation
of Red Cross and Red Crescent Societies

DREF operation n° MDRTD011
GLIDE n° [OT-2013-00049-TCD](#)
30 April 2013

The International Federation of Red Cross and Red Crescent (IFRC) Disaster Relief Emergency Fund (DREF) is a source of un-earmarked money created by the Federation in 1985 to ensure that immediate financial support is available for Red Cross and Red Crescent emergency response. The DREF is a vital part of the International Federation's disaster response system and increases the ability of National Societies to respond to disasters.

CHF 254,242 has been allocated from the IFRC's Disaster Relief Emergency Fund (DREF) to support the National Society in delivering immediate assistance to some 1,200 households (6,000 beneficiaries). Unearmarked funds to repay DREF are encouraged.

Summary: The conflict between Salamat and Missiryé in Darfur, Sudan has resulted in a massive movement of population to Chad, particularly in the area of Sila. While previous reports had indicated that up to 39,395 people were on the move, unconfirmed reports indicate there are upwards of 74,000 people (a combination of refugee and returnees) in the Sila region. The volatile situation to date has recorded up to 48 people wounded by gunfire.

New arrivals consist primarily of women and children, in a notoriously insecure area. The movement of these people is complicated due to the distance of up to 60 kilometres that people have to travel through. Exacerbating the situation is the geographical landscape of Sila region, especially in the prefecture Tissi, which is landlocked and, with the rains expected from May onwards, will result in access being near impossible.

The situation is very critical on the ground, as refugees and returnees arrive in Chad completely destitute and form groups and camps on arid sites often far away from water points and without latrines.

During this operation, the Red Cross of Chad, supported by IFRC, will conduct a detailed assessment of needs while simultaneously responding to the needs of the people by distributing limited non-food items, supporting the construction of emergency latrines, promoting community health in emergencies and hygiene and sanitation, to reduce their vulnerability. Based on the results of the assessment, this plan will be revised accordingly to meet the needs of the affected families in the coming weeks.



The volunteers from the Red Cross of Chad local branch of Sila were among the first to provide assistance to refugees in partnership with Red Cross Red Crescent Movement and non-Movement partners. Here, volunteers are setting up a temporary shelter for the affected families.
Photo/RCC

This operation will be implemented over three months and will be completed by 30 July 2013. The final report will be available October 2013 after the end of the operation.

[<click here for DREF budget; here for map of affected areas; or here for contact details>](#)

The situation

In February 2013, an inter-community conflict took place between two tribes in Darfur in the Republic of Sudan. As a result of this, hundred of persons have crossed the border to find refuge in Chad.

The population movement has seen a considerable increase since the conflict in Sudan continued in intensity, with most of the new arrivals mainly composed of women and children of Chadian and Sudanese populations. As of 22 April, UNHCR has registered upwards of 45,000 people from both refugee and returnee categories are living in Sila, in the east of the country.

On 21- 24 March, an initial joint assessment was carried out by the decentralized services of the government of Chad, the UN offices in Chad (UNHCR, WFP, UNICEF), the Red Cross of Chad (RCC) and other Chad-based aid agencies. Assessment findings determined needs in the following areas:

- Health and nutrition
- Food security
- Shelter
- Protection

The assessment findings revealed that displaced are in need of urgent assistance since they are exposed to risks associated with widespread malnutrition, especially among children under five years and pregnant and lactating women.

According to the latest available UNOCHA report, UNHCR has started to register and relocate refugees to the existing camp of Goz Amer, the South-Eastern country, where they can receive adequate assistance. However, some are reluctant to move away from the border, especially those who were able to cross into Chad with their cattle.

In and around Tissi, MSF is providing basic health care and vaccinations for children from 6 months to 15 years old through mobile health clinics. Meanwhile, ADES, a Chadian NGO, follows convoys to provide medical care and is helping to evacuate seriously wounded persons to Goz Beida, the main town in South-Eastern where they can receive adequate medical treatments. In addition, UN Children's Fund (UNICEF) is building three boreholes in nearby villages and rehabilitating the Tissi's health centre.

At Goz Amer camp, the families are given a monthly dry food ration by World Food Programme and non-food items from UNHCR, including mosquito nets, jerry cans, blankets, mats, soap and kitchen sets. New shelters have been constricted for the arriving families. Additionally, UNICEF is extending the camp's water distribution network to these areas.

Coordination and partnerships

The RCC, the IFRC country office and the ICRC organize regular coordination meetings at the National Society headquarters. These coordination meetings aim to harmonize their action on the ground for more impact.

In addition to these meetings, the government of Chad, in collaboration with UNHCR, organizes a weekly meeting with all humanitarian agencies in the country as a platform for information sharing and policy-setting. The national society regularly participates in these meetings.

Sector cluster meetings for health, water and sanitation, food security and nutrition were activated, focusing mainly on information sharing and defining roles and responsibilities of potential actors.

Red Cross and Red Crescent action

As an auxiliary to the government, the Red Cross of Chad is working closely with the Chadian Government as well as with other components of the Red Cross Red Crescent Movement. Activities implement to date include:

- Mobilizing the regional committee to collaborate with local authoring in welcoming and assisting refuges

- Participating in coordination meetings with external partners and the Chadian government
- Deploying 40 volunteers and experienced staff to support the UNHCR to vaccinate, de-worm and transfer refugees to the proposed site of Goz Amer
- Providing five trucks in good conditions for the transfer of refugees from the arrival point to the proposed sites
- Participating in the vaccination of refugees through the social mobilization

Meanwhile, ICRC has supported the National Society in the following:

- Support to train RCC volunteers in the area of Sila
- Deployed an assessment team to review the situation in Tissi
- Evacuated severely injured persons to the regional hospital in Abéché
- Provide medical support to Médecins Sans Frontières (Doctors Without Borders).
- Participate in coordination meetings with external structures and the Government of Chad

Based on its assessment results, ICRC will determine further actions.

IFRC action to date includes the following:

Supported the Red Cross of Chad in its deployment of five trucks to transfer returnees and refugees
 Support RCC in partnership negotiation for potential bilateral agreement (UNHCR, UNICEF, and WFP)
 Participation in the coordination meetings with external partners and the Chadian government
 Participate in the RC/RC Movement meeting
 Support the draft of the intervention strategy with the National Society
 Provision of logistical and technical support for the field evaluation mission

The needs

While detailed needs are yet to be identified, the rapid assessment conducted in late March indicate the following sectors for intervention as follows:

- Health and nutrition
- Food security
- Shelter
- Protection

The proposed operation

The RCC and the IFRC country office will use the DREF to provide initial basic emergency assistance to affected households through the distribution of non-food items, water and sanitation services as well as community based health services, while also deploying a team of specialists to further assess the needs of the affected population. Up to three regional disaster response team members will also be deployed to support the start-up and implementation of this operation as well as the assessment where needed.

This DREF will enable the Red Cross of Chad with the technical support from the IFRC to support 1,200 vulnerable households (6,000 refugees/returnees). Core activities to be implemented are the following:

- Distribution of limited non-food items
- Water, sanitation and hygiene promotion and community health activities
- Undertake a thorough assessment of the situation in the field
- Capacity building for the NS and community volunteers
- Reinforcement of the IFRC staff in Chad
- Monitor and evaluation of DREF activities

Detailed activities include:

- Distribution of water and sanitation kits, non-food items(hygiene kits, buckets, jerry cans) to 1,200 households displaced in the region of Sila
- Identification of areas to conduct advocacy on water and sanitation, hygiene as well as support the construction of 300 emergency latrines
- Implementation of health and sanitation activities and provide support through volunteers immunization sessions
- Support the construction of temporary shelters for 1,200 households
- Promotion of social and community activities
- Train 120 volunteers on hygiene, sanitation, distribution and shelter

Most of the non-food items with the exception of tarpaulins are available through the National Society's disaster preparedness stocks. IFRC will support in the replenishment of the items mobilized through this

DREF. Buckets and jerry cans were included as appropriate non-food items due to a river in proximity to the travel route, and water purification sachets will be provided to improve access to potable water.

Complementing these activities will be a detailed assessment to identify more specific needs and the revision of the plan of action below to meet them. Support costs for this operation is budgeted for six weeks, with the expectation that the assessment results will lead to a revision of this plan in the near future.

Emergency shelter and non-food items	
Outcome: Reduce the immediate vulnerability of 1,200 displaced in the region of Sila through the distribution of tarpaulins, plastic mats and blankets	
Outputs (expected results): 1,200 households receive appropriate non-food items for their needs	Planned activities <ul style="list-style-type: none"> • Mobilize and brief 30 volunteers for the distribution of tarpaulins, plastic mats and blankets to 1,200 vulnerable households according to pre-established criteria • Develop an a plan of action with the involvement of volunteers • Coordinate with local authorities and volunteers in the field • Distribute tarpaulin, plastic mats and blankets to 1,200 households • Monitor and evaluate the distribution process

Emergency health	
Outcome: Reduce the immediate health risk of 50,000 beneficiaries by providing community based health care and first aid in the region of Sila	
Output (expected result): Up to 50,000 beneficiaries are targeted in health prevention and hygiene promotion activities	Planned activities <ul style="list-style-type: none"> • Mobilize and train 35 volunteers through the PHAST methodology and ECV • Train 50 community volunteers in CBHFA • Organize awareness raising campaigns at household level • Administer first aid to injured persons • Participate in immunization sessions in cooperation with UNICEF to prevent measles and meningitis • Monitor and evaluate field activities

Water, sanitation, and hygiene promotion	
Outcome: Reduce the risk associated with waterborne diseases and hygiene for approximately 6,000 displaced people through the provision of equipment for water storage and sanitation as well as hygiene promotion	
Output (expected result): Hygiene and prevention of waterborne diseases have been improved	Planned activities <ul style="list-style-type: none"> • Mobilize and train 35 volunteers on KAP survey to identify key hygiene messages and final content on hygiene kits • Mobilize water treatment tablets, jerry cans, buckets, soap and sanitation kits from pre-positioned disaster preparedness stocks • Support the distribution and public demonstration on the use of sanitation kits as well as water treatment chemicals • Conduct emergency hygiene promotion training for 20 key volunteers • Distribution 450 water treatment tablets per month per family (1.62 million tablets in total) over 3 months to 1,200 families • Conduct hygiene promotion awareness in community (waste management campaign, household water treatment and safe storage, etc.) • Construct 300 emergency latrines • Distribute 2,400 jerry cans and 1,200 buckets (2 jerry cans and 1 bucket per family) • Distribute 24,000 soaps (20 soaps per family) concurrently with sanitation and hygiene promotion messages • Monitor and evaluate field activities

Assessment

Outcome: Emergency needs of affected families are identified and gaps documented, leading to revision of the operation's plan of action	
Output (expected result): Detailed assessment is carried out across all sectors and the operation plan of action is revised appropriately to address outstanding needs	Planned activities <ul style="list-style-type: none">• Deploy a technical specialist to support National Society in planning and managing a detailed assessment including key informant interviews• Identify outstanding needs and gaps in consultation with local authorities and other stakeholders• Revise plan of action and budget

Contact information

For further information specifically related to this operation please contact:

- **In Chad, Red Cross of Chad:** Bongor Zam Barminas, Secretary General; email: croixrouge.tchad@yahoo.fr; phone: +235.66.29.88.82; fax: +235.25.20.255
- **In Chad, IFRC Country Representation:** Belly Mamadou Diallo; email: belly.diallo@ifrc.org; phone: +235.66.27.84.84

For Resource Mobilization and Pledges:

- **In Addis Ababa:** Loïc de Bastier, Resource Mobilization Coordinator; email: loic.debastier@ifrc.org; phone: +251.93.003.4013; fax: +251.11.557.0799

For Performance and Accountability (planning, monitoring, evaluation and reporting)

- **In Nairobi, IFRC Africa Zone office:** Robert Ondrusek, Planning, Monitoring, Evaluation and Reporting email: robert.ondrusek@ifrc.org; phone: +254.73.106.7277

How we work

All IFRC assistance seeks to adhere to the Code of Conduct for the International Red Cross and Red Crescent Movement and Non-Governmental Organizations (NGO's) in Disaster Relief and the Humanitarian Charter and Minimum Standards in Disaster Response (Sphere) in delivering assistance to the most vulnerable.

The IFRC's vision is to inspire, encourage, facilitate and promote at all times all forms of humanitarian activities by National Societies, with a view to preventing and alleviating human suffering, and thereby contributing to the maintenance and promotion of human dignity and peace in the world.



The IFRC's work is guided by Strategy 2020 which puts forward three strategic aims:

1. Save lives, protect livelihoods, and strengthen recovery from disaster and crises.
 2. Enable healthy and safe living.
 3. Promote social inclusion and a culture of non-violence and peace.
-

DREF - Chad Population Movement

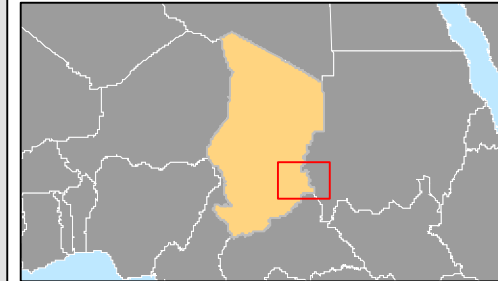
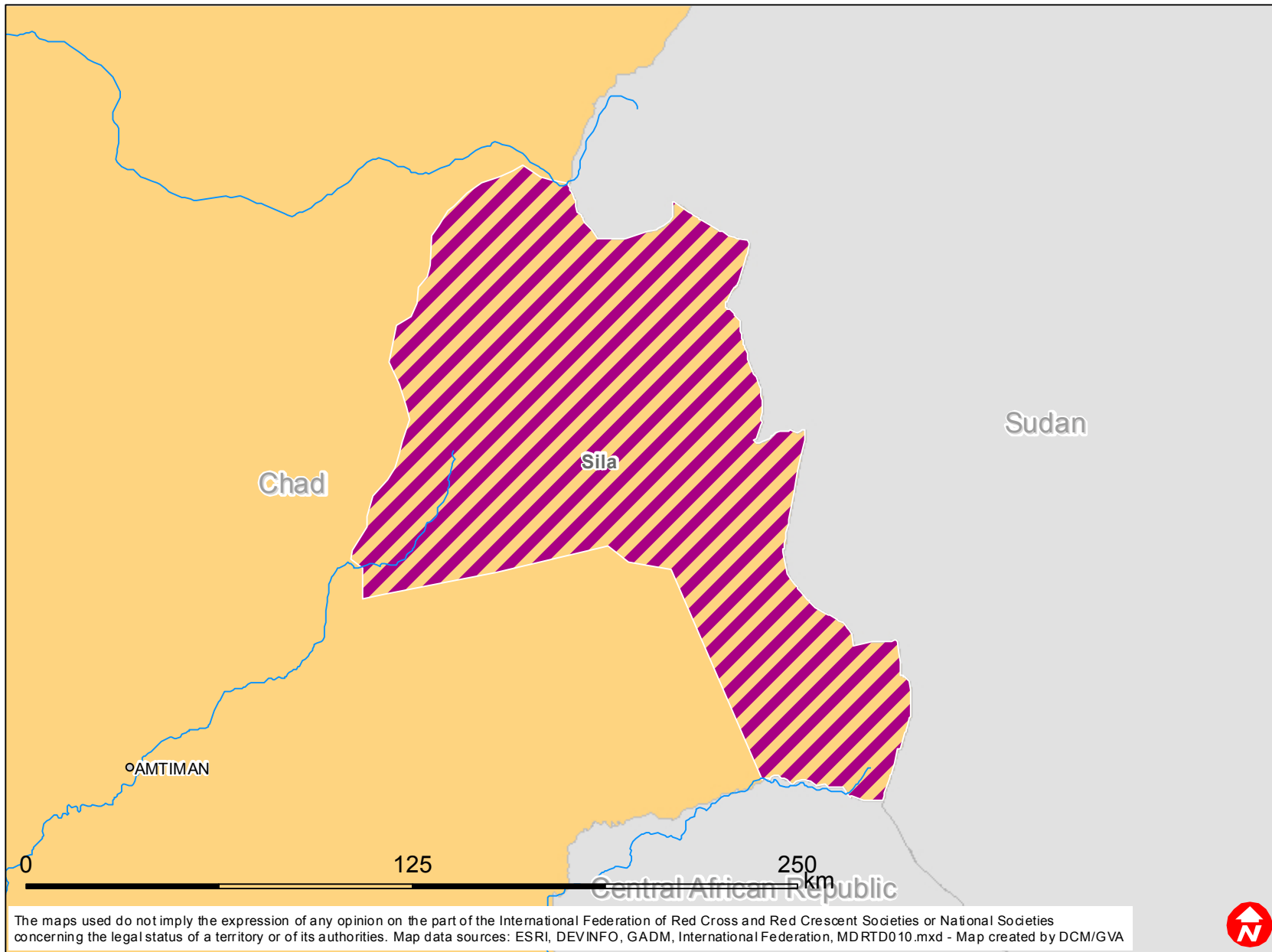
30.04.2013


MDRTD011

Budget Group	DREF Grant Budget CHF
Shelter - Relief	33,336
Shelter - Transitional	0
Construction - Housing	0
Construction - Facilities	0
Construction - Materials	0
Clothing & Textiles	26,667
Food	0
Seeds & Plants	0
Water, Sanitation & Hygiene	72,361
Medical & First Aid	1,620
Teaching Materials	12,222
Utensils & Tools	
Other Supplies & Services	0
Emergency Response Units	0
Cash Disbursements	0
Total RELIEF ITEMS, CONSTRUCTION AND SUPPLIES	146,206
Land & Buildings	0
Vehicles Purchase	0
Computer & Telecom Equipment	0
Office/Household Furniture & Equipment	0
Medical Equipment	0
Other Machinery & Equipment	0
Total LAND, VEHICLES AND EQUIPMENT	0
Storage, Warehousing	1,667
Distribution & Monitoring	20,185
Transport & Vehicle Costs	3,800
Logistics Services	0
Total LOGISTICS, TRANSPORT AND STORAGE	25,652
International Staff	22,500
National Staff	2,500
National Society Staff	6,944
Volunteers	11,867
Total PERSONNEL	43,811
Consultants	0
Professional Fees	0
Total CONSULTANTS & PROFESSIONAL FEES	0
Workshops & Training	9,352
Total WORKSHOP & TRAINING	9,352
Travel	9,629
Information & Public Relations	0
Office Costs	0
Communications	2,222
Financial Charges	1,852
Other General Expenses	0
Shared Support Services	0
Total GENERAL EXPENDITURES	13,704
Programme and Supplementary Services Recovery	15,517
Total INDIRECT COSTS	15,517
TOTAL BUDGET	254,242



Chad: Population movement



 Affected region

