

www.ifrc.org
Saving lives,
changing minds.

Emergency appeal

Chad: Population Movement

 International Federation
of Red Cross and Red Crescent Societies

Emergency appeal n ° MDRTD011
GLIDE No. OT-2013-000049-TCD
26 June, 2013

This Emergency Appeal seeks CHF 1,489,072 in cash, kind, or services to support the Red Cross of Chad to assist 50,000 beneficiaries for six months, and will be completed by the end of December, 2013. A Final Report will be made available by March 2014 (three months after the end of the operation).

CHF 254,242 was allocated on 30 April from the International Federation of Red Cross and Red Crescent (IFRC) Disaster Relief Emergency Fund (DREF) to support this operation. Unearmarked funds to replenish DREF are encouraged.

The recent ethnic conflicts between the two Sudanese tribes (Salamat and Misseriyé, living both in Sudan and Chad) occurring in Darfur (Sudan) have resulted in a massive displacement of population in the Sila region precisely in the Sub - Prefecture of Tissi since March 2013. This situation has affected a significant number of people (refugees as well as returnees) who lost everything during the dramatic events. Currently, according to the last registration, there are 28,183 Sudanese refugees and 19,736 Chadians returnees hosted in several sites. The overall humanitarian situation of the affected people is critical. A total of 40 deaths and 48 wounded by gunfire have been registered during this crisis.

The affected persons and who are mainly women, children and elderly persons are in a precarious condition. Amongst them, there is a good number of children unaccompanied or separated from their parents during the migration.

The Red Cross of Chad (CRC) has deployed its volunteers from the early hours of the crisis to welcome and shelter the refugees and returnees in official sites proposed by the local governmental authorities in Abgadam. The CRC collaborated with UNHCR and provided trucks to transport the refugees and returnees into more secure locations. Volunteers have also supported UNHCR in the distribution of food and non-food items and pre-registration.

At the request of the CRC, the IFRC launched a DREF operation for the distribution of non-food items to 1,200 households, installation of emergency latrines for 300 families, water treatment, and training of volunteers to sensitize target groups in order to reduce the risk of water-related diseases and disseminate messages on emergency health. A two-member Regional Disaster Response Team (RDRT) was deployed to support the current operation in the region of Sila.

During the implementation of emergency relief activities and as part of the DREF operation, a combined IFRC and CRC team conducted a multi-sectoral assessment of the situation and the findings showed that though the number of refugees and returnees are lower than first anticipated (currently 49,000), there is an urgent



Volunteers from the Red Cross regional committee of Sila were among the first to provide assistance to refugees. Here, volunteers installing an emergency shelter for the affected families. Photo / Red Cross of Chad.

need for interventions in most humanitarian sectors. The assessment process also included multiple discussions with UNHCR, ICRC and other humanitarian partners to define the scope of the needed IFRC supported interventions. This has led to the extension of the scope of the IFRC / CRC operation and merging the DREF operation into this Emergency Appeal.

The appeal focuses on providing assistance in the following areas; water, sanitation and hygiene promotion, shelter, non-food items distribution, emergency health and protection of the environment. It aims to provide humanitarian assistance to 3,000 households located in the camp of Abgadam in the Sila region.

[<click here to view the attached Emergency Appeal Budget; here to link to a map of the affected area; or here to view contact details>](#)

The Situation

Following ethnic violence which erupted in West Darfur, precisely in the district of Um Dukhun between January and April 2013, the Sub Prefecture of Tissi in the Sila region has experienced an influx of Sudanese refugees and Chadian returnees. The UNHCR, supported by volunteers from the Regional Committee of the CRC conducted several missions from February and established a base in the Sub Prefecture of Tissi. Pre-registration activities and relocation have been made to shelter the affected in a safer place. Since the humanitarian scale-up in April (including the IFRC DREF operation), The UNHCR has been moving people into camp sites, but security and logistical challenges have slowed down the humanitarian response, which was completely frozen for a short period in May due to security concerns.

Table 1: Summary on the displaced populations.

| Nationality | Number of persons | Number of households |
|--------------------------|-------------------|----------------------|
| Sudanese refugees | 27,721 | 7,463 |
| Central African refugees | 462 | 174 |
| Total refugees | 28,183 | 7,637 |
| Chadians returnees | 19,736 | 4,907 |
| Total | 47,919 | 12,544 |

In addition to the refugees and returnees, 40 households from the Salamat tribe fled the conflict and settled in the village of Ladja, and moved again to Rout Rout, a village located 7 km from their usual residence for fear of ethnic tensions in Sudan which occurred in early April 2013. According to testimonies, the conflict has not yet spilled over into Chadian territory.

Sila Region is a region located more than 1,000 km from the capital N'Djamena. This region hosts already a large number of Sudanese refugees who fled the 2004 armed conflict in Darfur. The region has been affected by the food crisis of 2011-2012. According to the latest National Assessment of Food Security conducted by the Ministry of Agriculture and humanitarian non-governmental organisations present in Chad, 40 percent of the population of the Sila region will face food insecurity during the year 2013.

In response to this situation, the Government of Chad, through the Minister of Foreign Affairs and African Integration launched an appeal to the international humanitarian community for their support to respond to this new humanitarian crisis in Chad.

To get a clear picture of the situation and possible evolution, the IFRC and the CRC conducted a multi-sectoral assessment to Sila region in May 2013. The objective was to collect necessary information to enable the definition of the appropriate scope of the IFRC/CRC response to the situation and to verify needs and figures. The assessment team assessed the living conditions of the refugees and returnees and surrounding communities and met with humanitarian partners.

Coordination and partnerships

The **Chadian government** facilitates the access to its territory to the refugees and returnees respecting thereby the Geneva conventions of non-return and non-rejection. Security arrangements have been

reinforced by a battalion of 600 people (in addition to 1,500 of the Joint Chadian-Sudanese forces). The region is now deemed stable enough for humanitarian actors wishing to conduct activities on the ground.

The **UNHCR** office organizes regular operational meetings to share the level of contribution of each humanitarian agency in the area of WASH, shelter, health and protection. The last meeting held at the UNHCR office which was attended by IFRC and CRC discussed a plan of action where each partner presented its contribution. The various actions to be taken immediately in order to reduce the suffering persons are the following:

UNHCR / IOM: With the participation of volunteers from the Red Cross regional committee of Sila, UNHCR and IOM were the first to welcome refugees and displaced Chadians in the Chadian-Sudanese border. Among the first activities undertaken include pre-registration, relocation to sites deemed safer and distribution of food and non-food items. UNHCR and International Rescue Committee are in charge of water trucking with CRC volunteers in order to provide potable water to affected people in the camp of Abgadam. Attempted drilling in Tissi by the NGO HIAS has not yielded any results. Research of groundwater is still on-going in the new camp of Abgadam.

Embassy of Turkey: The diplomatic representation of Turkey has deployed five humanitarian NGOs to support refugees and returnees. Food and non-food items to 20,000 families were procured locally and transported to sites for distribution.

OXFAM GB: The OXFAM national office has pledged to provide partners with bladders and plastic slabs for latrines in the form of loans. Discussion with are on-going with the IFRC / CRC office for the acquisition of these slabs to accelerate the setup of emergency latrines in refugee sites.

UNICEF: UNICEF has completed the recording of malnourished children among refugees and returnees to distribute nutritional products (plumpy sugar).

MSF / H: is responsible for the curative health in refugee and IDP camps. The region lacks adequate health infrastructure and qualified personnel. At the outset of the crisis, MSF provided assistance to wounded victims and referred some severely injured to Abeche regional hospital. Periodic reports on the level of disease of the affected people are compiled and shared with all partners.

The Red Cross of Chad: The CRC response is coordinated from the CRC headquarters in N'Djamena. From the early days of the crisis, information has been shared with Red Cross Red Crescent partners through the IFRC Disaster Management Information System, and discussions on Red Cross movement response to the crisis were initiated at an early stage.

Through internal movement coordination mechanisms, roles and responsibilities of the different movement partners have been defined based on mandate and experience, and movement partners have been included in the development of the IFRC emergency appeal.

Red Cross and Red Crescent Action

The CRC has deployed its volunteers since the early onset of the crisis to welcome and shelter the refugees and returnees in sites proposed by the local governmental authorities. It provided trucks to UNHCR to transport those affected to more secure locations. Volunteers have also supported UNHCR in the distribution of food and non-food and pre-registration.

The DREF was launched on 30 April to support 1,200 families through the distribution of tarpaulins, jerry cans and buckets for the transportation and storage of drinking water and construction of community latrines. One hundred volunteers will be trained to support the implementation of the DREF operation. According to the report from the field team, the following activities were carried out by volunteers from the CRC and 2 RDRTs in Camp of Abgadam:

- Construction of 60 latrines
- Transfer of refugees 10,200 refugees by CRC trucks to the camp of Abgadam

- Distribution of 502 tonnes of food provided by WFP to 2,510 beneficiaries.
- Training of 31 volunteers on distribution techniques, watsan and, logistics.
- Distribution of NFIs: 2,981 blankets; 2,889 mosquito nets; 1,747 tarpaulins; 2,810 buckets; 1,569 kettles; 1,686 kitchen sets; 2,678 plastic mats; 6,276 pieces of soap (CRC/UNHCR Contribution).
- Distribution of food: Sugar, salt, millet, flour and rice.
- The distribution of food and non-food items has reached 6,369 beneficiaries (UNHCR / WFP).

ICRC: The ICRC delegation was also among the first humanitarian agencies to provide relief to those seriously injured during the fighting. A referral system has been put in place transport the injured persons from the border to the regional hospital in Abeche. The following activities have already been carried out by the ICRC office:

- Treatment and referral of 37 severely injured persons to the regional hospital in Abeche
- Distribution of tarpaulins, mats, mosquito nets, kitchen set blankets and soap to 10,000 Chadians returnees in 15 villages around Tissi.
- Restoration of family links through telephone calls and Red Cross messages.
- Registration of unaccompanied children and reuniting them with their families

The needs

Beneficiary selection: According to the evaluation conducted by the CRC with technical support from the IFRC, a total of 47,919 persons (both refugees and returnees) are displaced and have found refuge in Chad. Among the refugees, there are nomadic families who crossed the border with their livestock.

Emergency needs of affected persons are water and sanitation, hygiene promotion, food and non-food items, shelter, emergency health and environmental protection. Findings of the detailed needs assessment are as follows:

Food Security: This year, the food security situation in the Sila region is already worrying. The Sub-Prefecture of Tissi and its surrounding villages, the area which currently hosts the majority of the affected persons have a 40 percent deficit crop yield. Following the influx of refugees and displaced persons, the CRC has conducted a rapid assessment in April in the sub-prefecture of Tissi and its surroundings and the findings indicate that people are living with real food insecurity. The three factors essential for a stable food security are not met. The availability, accessibility and the normal utilization of food does not currently exist in the Sila region. The influx of refugees and returnees will be an additional burden for the region in terms of speculation on the price of food and staple.

Health and Nutrition: The population movement has resulted in the deterioration of the health and nutritional status of children, pregnant and lactating women. During the assessment, a number of households interviewed confirmed the presence of several health challenges such as diarrhoea, coughs, malaria, acute respiratory infections and also some suspected cases of measles and whooping cough. The only health centre in Tissi has neither adequate equipment nor trained staff. Recent reports by MSF/ H confirmed the presence of the mentioned diseases.

Table 2: Summary of child nutrition assessment rates.

| Total number of children screened | Total children Muac> 135 mm | Total children Muac <135-126 mm | Total children Muac <125 - 115mm | Total children Muac <115 mm |
|-----------------------------------|-----------------------------|---------------------------------|----------------------------------|-----------------------------|
| 13,717 (100 percent) | 10,918 (87 percent) | 1,901 (6.5 percent) | 771 (5.6 percent) | 127 (0.9 percent) |

The results of the nutritional screening of children under 5 in the table above shows that the current rate is below the emergency threshold set by WHO. The global acute malnutrition was 6.5 percent, the acute moderate 5.6 percent while severe acute malnutrition is 0.9 percent.

Shelter: Conditions of refugees and returnees in terms of shelters are alarming. The majority of those affected live in trees or small sheds made of straw or pieces of clothes. The situation could deteriorate further with the onset of the rainy season with the first rains begin to fall in June.

Water and Sanitation: In the sub-prefecture of Tissi, the water distribution system is in bad condition. The water tower is not used full time. It is only used for half a day. Water distribution points in the city are not operational and the majority of hand operated pumps have failed and require repair. UNCHR provides fuel to support the water tower in order to supply the population and displaced persons with drinking water. In refugees and returnees sites, the majority of households and groups of people visited fetch water from a large backwater in Tissi. The fact is that even in the market people use water from the backwater exposing them to the risk of water-related diseases. In the new sites provided by the authorities in collaboration with partners in the field; Abgadam and Birnahal, early attempted drilling failed to supply enough water. Refugees sheltered in the camp of Abadagam are supplied with drinking water through the trucking system from treated water sources far away from the camp.

Environmental Protection: The Sila region as all regions of eastern Chad is a semi-arid area where it rains only two or three months a year. It faces a rapid advance of the desert mainly due to excessive cutting of trees, fratricidal wars in the country, and inter-ethnic conflicts over grazing and water points has made environmental protection difficult. The massive influx of returnees and refugees is likely increase the degradation of the environment through excessive cutting of trees and other harmful activities.

The Proposed operation

After discussion with various partners in the field including the UNHCR, the operational strategy of the CRC and the IFRC country office is to complement the activities already undertaken by UNHCR and other partners in the field and those in progress. The discussions organized with the UNHCR office will enable the CRC to focus on activities deemed urgent and not covered by other humanitarian agencies in the field in order to provide emergency assistance in the areas of shelter and non-food items, emergency health, water and sanitation, hygiene promotion and protection of the environment through the distribution of improved stoves and awareness program.

This operation will provide emergency assistance to 3,000 households in shelter, health, WASH NFIs while including activities against water-borne diseases and environmental protection.

To support the technical emergency shelter design validation, the Swiss Red Cross has offered assistance already available in the region. For surge capacity in detailed planning and initiation of the logistics and health activities, this emergency appeal has requested technical / HR support from the IFRC Emergency Response Unit roster. This technical support reflects a new way of working with IFRC surge capacity, where technical HR can be deployed without mobilizing full Emergency Response Units.

| Emergency shelter and non-food items | |
|---|--|
| Outcome: Reduce the immediate vulnerability of 3,000 households in the camp of Abgadam through the provision of emergency shelter construction materials, basic household items and shelter construction assistance. | |
| Outputs (expected results) | Activities Planned |
| <ul style="list-style-type: none"> 3,000 households in the camp of Abgadam receive appropriate assistance in NFIs for their needs. | <ul style="list-style-type: none"> Train and mobilize 70 volunteers for the distribution of NFIs. Develop a screening strategy and a registration system for the distribution of NFIs. Mobilize and distribute 6,000 blankets, 3,000 kitchen sets and 6,000 loincloths for women in the Abgadam camp. Control the movement of the stock from the dispatch point to beneficiaries Monitor and evaluate distribution and report regularly |
| <ul style="list-style-type: none"> 3,000 households have received tarpaulins, wood, tools, rope and other | <ul style="list-style-type: none"> Assess the shelter needs in the camp and adopt suitable shelter strategies. Train 50 Red Cross volunteers and 40 refugees on the |

| | |
|--|---|
| <p>emergency shelter materials for adequate emergency shelter supported by CRC volunteers.</p> | <p>installation of emergency shelters.</p> <ul style="list-style-type: none"> • Coordinate with local authorities, volunteers and partners in the field. • Distribute 7,800 tarpaulins accompanied with wood, tools and wire to 1,800 households in the camp. (2 tarpaulins already distributed to 1,200 families under DREF, remaining 1,800 families will receive 3 tarpaulins each) • Monitor and evaluate the process of distribution and the construction of shelters. |
|--|---|

Emergency health and care

| <p>Outcome: Reduce the immediate health risks of 50,000 people (3,000 families in the camp of Abgadam and 7,000 families in surrounding villages) through community-based health promotion and first aid.</p> | |
|--|--|
| Outputs (expected results) | Activities Planned |
| <ul style="list-style-type: none"> • 50,000 people are targeted by the activities of health prevention and hygiene promotion. | <ul style="list-style-type: none"> • Mobilize and train 50 volunteers through the EVC training • Train 50 community volunteers on CBHFA • Deploy an ERU roster health expert. • Procure and distribute 6,000 mosquito nets. • Work in collaboration with local health services. • Organize door to door and mass sensitization campaigns. • Provide first aid to the injured and referrals. • Participate in immunization campaigns with UNICEF for the prevention of measles and meningitis. • Monitor and evaluate the activities in the field. |

Water, Sanitation, and Hygiene Promotion

| <p>Outcome: Reduce the risk of water-borne diseases and hygiene to 3,000 households through the provision of equipment for water storage, sanitation activities and hygiene promotion messages.</p> | |
|--|--|
| Outputs (expected results) | Activities Planned |
| <ul style="list-style-type: none"> • Hygiene promotion activities and prevention of waterborne diseases have been improved. | <ul style="list-style-type: none"> • Mobilize and train 70 volunteers through the PHAST methodology. • Procure and distribute 6,000 jerry cans and 9,000 hygiene kits in the camp of Abgadam over 3 months. • Procure and distribute 450 aqua tabs tablets per month per family (4.05 million tablets in total) over period of 3 months to 3,000 households. • Procure and install 15 water tanks of 5,000 litres in the camp of Abgadam. • Install handrails and tabs for water supply and arrange the sites of the water tanks. • Demonstrate the use of hygiene and water treatment kits to beneficiaries during distribution. • Conduct hygiene promotion campaigns in the camp (sensitization on waste management and treatment and storage of water at household level). • Construct 60 emergency latrines. • Build 20 public latrine blocks (4 latrines per block) in the camp of Abgadam. • Monitor and evaluate the planned activities. |

Disaster Risk Reduction

Outcome: Increased awareness on disaster risk reduction in the 3 regions of Sila, Ouaddai and Wadi Fira where population movement is prevalent.

| Outputs (expected results) | Activities Planned |
|--|---|
| <ul style="list-style-type: none"> The CRC in collaboration with communities in the region of Sila, Ouaddai and Wadi Fira implement a strategy to reduce impact related to population movement and other natural disasters. | <ul style="list-style-type: none"> Train 100 volunteers in DRR, early warning system, population movement and environmental protection. Establish a disaster preparedness team in each of the three regions. Develop an annual contingency plan on cross-border population movement in eastern Chad and test it with simulation exercises. Distribute 6,000 improved stoves to 3,000 households in the camp of Abgadam to reduce the consumption of firewood Organize sensitization activities on environmental protection in the camp of Abgadam. |

Logistics

Adequate logistical support to the operation will be provided in accordance with standards IFRC logistics procedures. Logistics activities to be carried out during the operation are as follows:

- Set-up a supply chain and control supply movements from point of entry to final distribution point.
- Mobilize NFIs pre-positioned in the IFRC stocks to promptly respond to the needs of the affected persons.
- Deployment of IFRC ERU roster logistics expert.
- Coordinate with zonal Logistics Unit in Nairobi and the West Coast regional representation office in Dakar to provide needed items for the operation.
- Manage warehouses, transport and vehicles fleet following IFRC Logistics procedures.
- Support the CRC in warehousing.
- Support the NS in the transportation of NFIs to distribution sites.
- Rent a buffer warehouse in Tissi to dispatch the material to the rub hall in Abgadam.

Security

The security conditions in eastern Chad and Sudan has improved slightly since January 2010 when both governments signed an agreement to cease supporting armed groups operating across their shared border. Nevertheless, Chad continued to experience instability in a significant portion of its territory. Its eastern border is particularly exposed to banditry and sporadic social or tribal disputes. Kidnappings of expatriates are rare although it has occurred in the north east and eastern regions. Road Conditions are poor and areas of operation can be isolated. Travel to rural areas should be well planned and coordinated. The IFRC country delegation will establish and maintain an effective list of security contacts and keep the staff updated on the security status across the country. Security management will be done in cooperation with ICRC.

Communications - Advocacy and Public Information

The steady flow of timely and accurate information between those working in the field and other major stakeholders will support the programme objectives of this emergency appeal, increase the profile, funding and other support for the impacted National Society and the IFRC, and provide a platform on which to advocate in the interests of vulnerable populations. In close collaboration with the operation, those affected by this emergency will be provided with information to support their relief and recovery. Donors and National Societies will receive information and materials they can use to promote this operation and communications initiatives will help to build the information and public relations capacity of the host National Society for future emergencies.

Key activities include:

- Key beneficiary audiences and their common sources of information are identified.
- Those sources of information are prioritized and provided with details on relief and recovery resources, qualification criteria, and other essential information to benefit vulnerable individuals.
- News releases, fact sheets, video, photographs and qualified spokespeople are immediately developed and made available to media and key stakeholders.
- Direct outreach will be coordinated with the host national society and conducted with national and international media.
- The launch of this appeal and other major milestones throughout the operation will be supported with people-centred, community level diverse content, including web-stories, blog entries, video footage and photos with extended captions, will be posted to ifrc.org and shared with other global humanitarian web portals and international media
- An IFRC communications officer may be deployed to the affected region to work with the National Society in the gathering and dissemination of communication materials, and acting as spokesperson/media relations focal point for international media.

Capacity of the National Society

The CRC has 20 staff with expertise in food security, disaster management, community health, water and sanitation, HIV / AIDS as well as planning, monitoring and evaluation. It has 23 regional committees with a total of 40,000 volunteers. For this operation, 200 volunteers will be engaged for full time commitment for shorter periods for the emergency interventions.

The CRC has a long experience in managing population movements. With the support of the IFRC, it continues to manage the two largest Sudanese refugee camps in eastern Chad. It also managed the Central African refugee camps in the south of the country.

The CRC has a long experience of responding to emergencies and carrying out recovery activities. It works closely with communities and through a wide volunteer network. The volunteers have been active in emergency operations for many years, including recent assistance to Sudanese refugees in eastern Chad, response to cholera epidemic, food insecurity and flood. The National Society would seek additional support for planning, monitoring, reporting and volunteer management to help it implement planned activities in this emergency operation. An operation manager will oversee the emergency response and long term operations, to ensure durability of the programmes. The NS supported by 2 RDRTs, field delegates and its own network of NDRTs, will support and build capacity of the regional CRC committees in the affected areas, providing relevant training and coaching. In addition, the offices of the affected regional committees will be equipped with adequate materials to facilitate the implementation of activities.

Capacity of the IFRC

The IFRC's presence in Chad is maintained by a country representative with a background in disaster management. There are also IFRC national staff members providing support in finance and administration, planning, monitoring, evaluation and reporting, plus additional support from RDRTs members in relief, watsan and logistics. Two ERU roster members (health expert from the IFRC surge roster) and an RDRT in shelter will be deployed for technical support to the National Society and for monitoring of activities according to this appeal.

Walter Cotte
Under Secretary General
Program Services Division

Bekele Geleta
Secretary General

Contact information

For further information specifically related to this operation please contact:

- **In Red Cross of Chad:** Bongor Zam Barminas, Secretary General; phone: +235.66.29.88.82; fax: +235.25.20.255; email: croixrouge.tchad@yahoo.fr
- **In Chad, IFRC Country Representation:** Belly Mamadou Diallo; phone: +235.66.27.84.84; email: belly.diallo@ifrc.org;
- **IFRC Africa Zone:** Daniel Bolaños, Disaster Management Coordinator for Africa; Nairobi; phone: +254 (0)731 067 489; email: daniel.bolanos@ifrc.org
- **IFRC Geneva:** Christine South, Operations Quality Assurance Senior Officer; phone: +41.22.730.45 29; email: christine.south@ifrc.org
- **IFRC Zone Logistics Unit (ZLU):** Rishi Ramrakha, Head of zone logistics unit; phone: +254 733 888 022 ; Fax +254 20 271 2777; email: rishi.ramrakha@ifrc.org

For Resource Mobilization and Pledges:

- **IFRC Africa Zone:** Loïc de Bastier, Resource Mobilization Coordinator for Africa; Addis Ababa; phone: +251-93-003 4013; fax: +251-11-557 0799; email: loic.debastier@ifrc.org

For Performance and Accountability (planning, monitoring, evaluation and reporting):

- **IFRC Africa Zone:** Robert Ondrusek, PMER/QA Delegate for Africa; Nairobi; phone: +254 731 067277; email: robert.ondrusek@ifrc.org

How we work

All IFRC support seeks to adhere to the Code of Conduct for the International Red Cross and Red Crescent Movement and Non-Governmental Organizations (NGOs) in Disaster Relief and the Humanitarian Charter and Minimum Standards in Disaster Response (Sphere) in Delivering aid to the MOST vulnerable.

The IFRC's vision is to inspire, encourage, Facilitate and Promote at all times all forms of Humanitarian activities by National Societies, with a view to Preventing and Alleviating human suffering, and Thereby Contributing to the Maintenance and Promotion of human dignity and peace in the world.

www.ifrc.org
Saving lives, changing minds.



The IFRC's work is guided by Strategy 2020 All which puts forward three strategic AIMS:

1. Save lives, protect livelihoods, and Strengthen recovery from disaster and crises.
 2. Enable healthy and safe living.
 3. Promote social inclusion and a Culture of Non-violence and peace.
-

DREF - Chad Population Movement

26.6.13

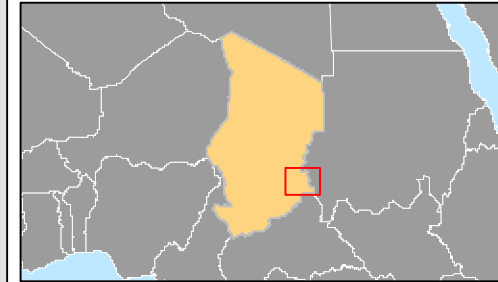
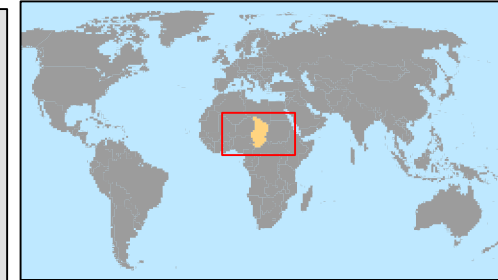
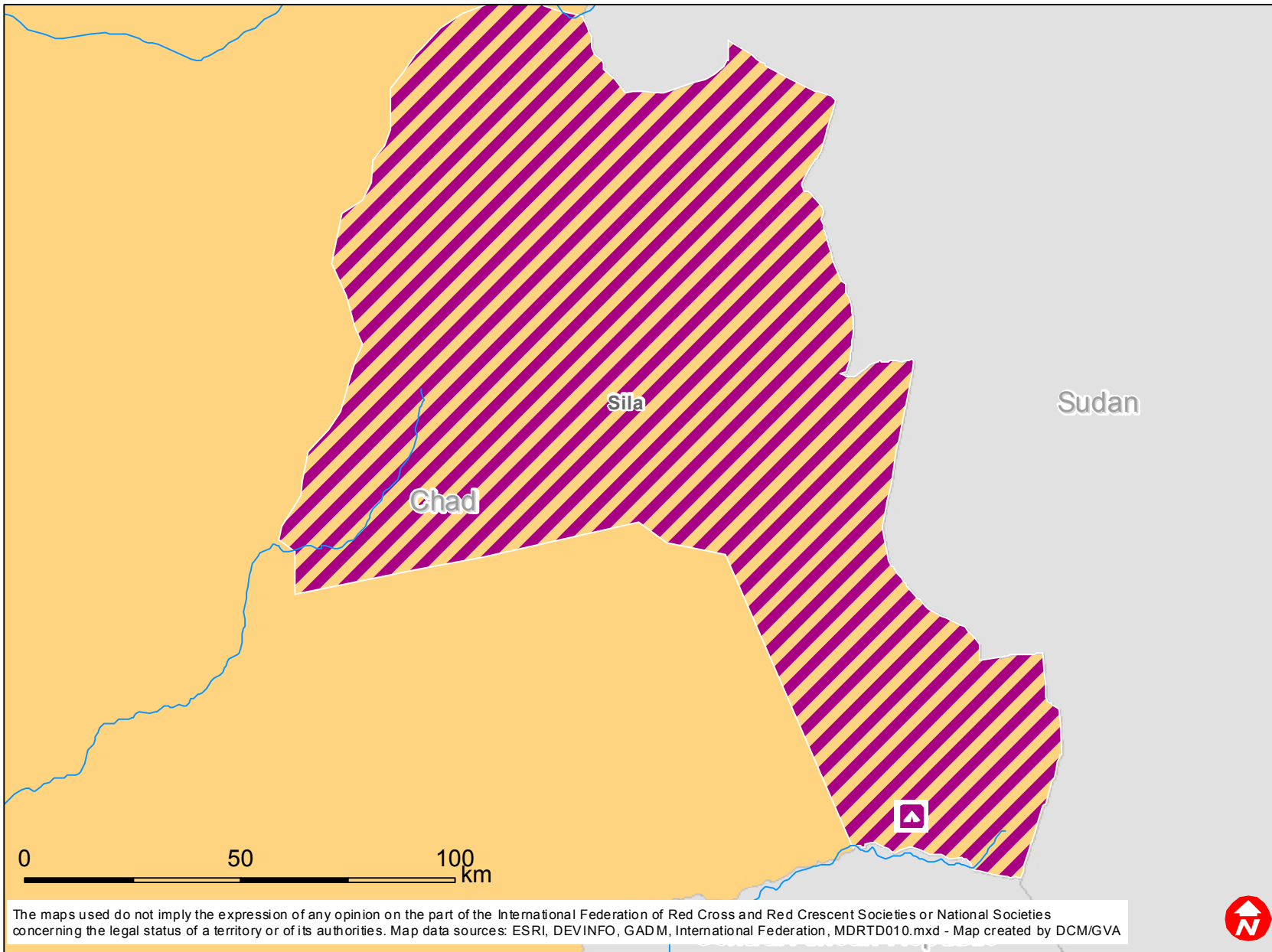
MDRTD011



| Budget Group | Multilateral Response | Inter-Agency Shelter Coord. | Bilateral Response | Appeal Budget CHF |
|--|-----------------------|-----------------------------|--------------------|-------------------|
| Shelter - Relief | 102,632 | | | 102,632 |
| Shelter - Transitional | | | | 0 |
| Construction - Housing | | | | 0 |
| Construction - Facilities | 14,662 | | | 14,662 |
| Construction - Materials | 155,301 | | | 155,301 |
| Clothing & Textiles | 115,602 | | | 115,602 |
| Food | | | | 0 |
| Seeds & Plants | | | | 0 |
| Water, Sanitation & Hygiene | 252,632 | | | 252,632 |
| Medical & First Aid | 8,600 | | | 8,600 |
| Teaching Materials | 5,639 | | | 5,639 |
| Utensils & Tools | 169,173 | | | 169,173 |
| Other Supplies & Services | 13,534 | | | 13,534 |
| Emergency Response Units | | | 60,000 | 60,000 |
| Cash Disbursements | | | | 0 |
| Total RELIEF ITEMS, AND CONSTRUCTION SUPPLIES | 837,773 | 0 | 60,000 | 897,773 |
| Land & Buildings | | | | 0 |
| Vehicles Purchase | | | | 0 |
| Computer & Telecom Equipment | 4,000 | | | 4,000 |
| Office / Household Furniture & Equipment | 5,075 | | | 5,075 |
| Medical Equipment | | | | 0 |
| Other Machiney & Equipment | 0 | | | 0 |
| Total LAND, VEHICLES AND EQUIPMENT | 9,075 | 0 | 0 | 9,075 |
| Storage, Warehousing | 12,218 | | | 12,218 |
| Dsitribution & Monitoring | 38,910 | | | 38,910 |
| Transport & Vehicle Costs | 53,414 | | | 53,414 |
| Logistics Services | 6,579 | | | 6,579 |
| Total LOGISTICS, TRANSPORT AND STORAGE | 111,120 | 0 | 0 | 111,120 |
| International Staff | 209,586 | | | 209,586 |
| National Staff | 27,632 | | | 27,632 |
| National Society Staff | 23,402 | | | 23,402 |
| Volunteers | 15,429 | | | 15,429 |
| Total STAFF | 276,049 | 0 | 0 | 276,049 |
| Consultants | 20,555 | | | 20,555 |
| Professional Fees | | | | 0 |
| Total CONSULTANTS & PROFESSIONAL FEES | 20,555 | 0 | 0 | 20,555 |
| Workshops & Training | 36,560 | | | 36,560 |
| Total WORKSHOP & TRAINING | 36,560 | 0 | 0 | 36,560 |
| Travel | 26,128 | | | 26,128 |
| Information & Public Relations | 2,256 | | | 2,256 |
| Office Costs | 25,752 | | | 25,752 |
| Communications | 12,759 | | | 12,759 |
| Financial Charges | 1,880 | | | 1,880 |
| Other General Expenses | | | | 0 |
| Shared Support Services | 38,284 | | | 38,284 |
| Total GENERAL MONTANT | 107,058 | 0 | 0 | 107,058 |
| Programme and Supplementary Services Recovery | 90,882 | | | 90,882 |
| Total INDIRECT COSTS | 90,882 | 0 | 0 | 90,882 |

| | | | | |
|-----------------------------------|------------------|----------|---------------|------------------|
| TOTAL BUDGET | 1,489,072 | 0 | 60,000 | 1,549,072 |
| Available Resources | | | | |
| Multilateral Contributions | | | | 0 |
| Bilateral Contributions | | | | 0 |
| TOTAL RESOURCES AVAILABLE | 0 | 0 | 0 | 0 |
| NET EMERGENCY APPEAL NEEDS | 1,489,072 | 0 | 60,000 | 1,549,072 |



Chad: Population movement



-  Abgadam
-  Affected region

