

OPERATIONS UPDATE



International Federation of Red Cross and Red Crescent Societies
Fédération Internationale des Sociétés de la Croix-Rouge et du Croissant-Rouge
Federación Internacional de Sociedades de la Cruz Roja y de la Media Luna Roja
الاتحاد الدولي لجمعيات الصليب الأحمر والهلال الأحمر

ASIA: EARTHQUAKE & TSUNAMIS

4 February 2005

The Federation's mission is to improve the lives of vulnerable people by mobilizing the power of humanity. It is the world's largest humanitarian organization and its millions of volunteers are active in over 181 countries.

In Brief

Revised Preliminary Appeal No. 28/2004; Operations Update no. 36; Period covered: 26 December - 4 February 2005; Appeal coverage: 107.7% ([Click here to view the provisional contributions list attached, also available on the Federation's website](#)).

Highlights of the Day:

- In Indonesia, the Indonesian Red Cross (Palang Merah Indonesia/PMI), the ICRC and the International Federation formally agreed on an operational framework for cooperation, intended to efficiently and coherently coordinate the Red Cross and Red Crescent Movement's humanitarian response in Indonesia. As part of the framework, the Federation will support PMI in establishing Movement service centres in Banda Aceh and Jakarta, and if required, in Medan.
- Further clarification was received from PMI headquarters about new visa requirements for Federation, and Red Cross and Red Crescent delegates. Blue books for Aceh province are now not required for personnel providing humanitarian assistance (only foreign journalists). Any delegates joining the operation for a period of more than one month will be obliged to obtain a visa prior to arrival. Please carefully review instructions detailed in Coordination section, from page four onwards.
- In Indonesia, the Federation now has the use of a charter aircraft (a one-engine Cessna Caravan) which can carry up to 12 passengers and 1.5 tonnes of cargo for travel between Medan, Meulaboh and Banda Aceh. Commercial airlines remain the best option for travel between Jakarta and Medan.
- Food and non-food items have been distributed to some 26,000 families in Sri Lanka through the national society. Seven Federation-coordinated emergency response units (ERUs) continue to operate in the country, providing drinking water, health support, medical assistance and logistics support.
- The Indian Red Cross Society and the Federation identified short-term recovery needs (livelihood restoration, disaster preparedness and branch support) as well as longer term recovery needs. Replenishment and pre-positioning of disaster stocks were identified as a key priority for future response capabilities.

Appeal history:

- Preliminary appeal launched on 26 December 2004 CHF 7,517,000 (USD 6,658,712 or EUR 4,852,932) for 6 months to assist 500,000 beneficiaries.
- Disaster Relief Emergency Funds (DREF) allocated: CHF 1,000,000.
- Revised Preliminary Appeal issued on 30 December 2004, for CHF 67,005,000 (USD 59,152,246 or EUR 53,439,988) for 2 million beneficiaries for 6-8 months.
- The Preliminary Appeal was originally launched titled “Bay of Bengal: Earthquake and Tsunamis”. The title was subsequently changed to “Asia: Earthquake and Tsunamis” in the Revised Preliminary Appeal launched on 29 December 2004.
- Operations update No. 16 revised the Revised Preliminary Appeal 28/2004 budget to CHF 183,486,000 (USD 155,286,000 or EUR 118,669,000) with programme extensions for particularly Sri Lanka, Indonesia, the Maldives and East Africa.

[Click here for contact details related to this operation](#)

Background

The magnitude 9.0 earthquake that struck the area off the western coast of northern Sumatra on Sunday morning, 26 December 2004, at 7:59 am local time (00:59 GMT) triggered massive tidal waves, or tsunamis, that inundated coastal areas in countries all around the Indian Ocean rim – from Indonesia to Somalia. Sri Lanka, the Indonesian province of Aceh, four states of southern India, the Maldives, and coastal areas of Thailand, Malaysia, and Myanmar were the most severely affected. The earthquake epicentre was located at 3.30 N, 95.78E at a depth of 10 kilometres. The area is historically prone to seismic upheaval due to its location on the margins of tectonic plates. However, tidal waves of this magnitude are rare and therefore the level of preparedness was very low.

Summary of the human toll caused by the tsunami as of 4 February

Countries	Dead	Missing	Displaced	Homeless	Sources
Indonesia*	230,000	-	n/a	417,159	Government
Sri Lanka	30,957	5,637	396,295	480,000	Government
India	16,389	-	647,599	20,000	Government
Maldives	82	26	21,663	n/a	Government
Thailand	5,393	3,071	n/a	n/a	Government
Myanmar	61	10	n/a	3,200	Government
Malaysia	68	12	n/a	4,296	Delegation
East Africa	313	132	2,320	n/a	Government
Total	283,263	14,396	>1,067,877	>924,655	

**In Indonesia and India only, the number of dead includes those previously listed as missing though this will only be official in Indonesia one year after the disaster's date.
Note: East Africa covers tsunami-affected countries of Kenya, Madagascar, Seychelles, Somalia and Tanzania.*

Thousands of staff, relief and medical personnel, and volunteers of the Red Cross and Red Crescent societies of the tsunami-affected countries have provided a vital initial response, in search and rescue, clean-up, providing temporary shelter and immediate relief assistance, emergency medical services, psychological first aid and tracing. It is estimated that over 10,000 Red Cross and Red Crescent volunteers and 76 relief and medical teams have been mobilised in the disaster-affected areas.

The Federation immediately launched a Preliminary Emergency Appeal on the day of the disaster with a focus on Sri Lanka, Indonesia and the Maldives. On 3 January 2005, the ICRC launched budget extensions additional to its 2005 Emergency Appeal for Indonesia and Sri Lanka. Along with initial support from the country and regional delegations, the Federation deployed within 24-72 hours three [Field Assessment and Coordination Teams \(FACT\)](#) and 18 [Emergency Response Units \(ERU\)](#) in the sectors of water and sanitation, health care, aid distribution, telecommunications, and logistics/transportation to Sri Lanka, Indonesia and the Maldives.

A total of 125 relief flights have now arrived in the various affected countries and a further 21 flights are in the Federation relief pipeline, making a total of 146 relief flights coordinated through the Federation.

The Federation and the ICRC in Geneva are currently working on an organizational framework for Movement coordination in the tsunami operations. A note has been sent out to national societies and delegations on this today, for consultation. It is expected that the framework, which will set in place strong platforms for coordination, will be finalised shortly, and a final note will be then sent out by the Federation and the ICRC.

Indonesia

Overview

Indonesia's official death toll was raised once again on 2 February to 110,146 persons, with the number of missing (presumed dead) remaining at an estimated 127,774. Although Indonesia continues to add to its death toll almost daily, the number of missing remains unchanged. The government has said that it plans to wait for the legally-required one-year period before declaring missing persons dead. The exact overall death toll is therefore difficult to confirm at this time – with most agencies maintaining their estimate of dead and missing at 230,000 people. Workers and volunteers are still retrieving up to 500 bodies a day, many of which are unidentifiable. Volunteers from the Indonesian Red Cross (Palang Merah Indonesia/PMI) had recovered 43,214 of the bodies at 2 February.

The World Food Programme (WFP) has dramatically increased its estimate of people requiring food assistance to 790,000 – up from the 340,000 people currently being fed through its programme in Aceh. This new projection is based on an expected rise in the numbers of people requiring assistance as isolated villages are reached and as the full economic impact of the disaster becomes clear. It is becoming apparent that many more people in the province will require food assistance, because they cannot sell cash crops due to the disruption in trade networks, or because they have been sharing their own food stocks with internally displaced persons (IDPs). The biggest challenge in food distribution will be in ensuring regular deliveries to towns and villages along the west coast, which will remain inaccessible by road for many months to come. Sea access is also expected to become more difficult, once the seasonal swells occur from March through August.

The government continues to step up its relocation and rehabilitation activities, now that the emergency relief phase has been officially declared over (even though emergency relief distribution will continue for some time yet). According to a joint government/UN/NGO rapid assessment on relocation issued on 2 February, relocation centres are being established by the government to house up to an estimated 100-150,000 IDPs for a period of up to two years. The centres are not permanent settlement options and it is expected that their populations will change over time, as residents move to more permanent housing.

The estimated number of IDPs requiring accommodation in the relocation centres has increased recently from 30,000 to more than 100,000. It is clear that many more sites will need to be selected quickly and the capacity of existing sites expanded. Relocation barracks in compounds – built as temporary shelter before IDPs can be resettled into rebuilt areas – are being erected across the province to house about a quarter of the displaced population. Half of these are expected to be completed by mid-February, with the rest to be finished by the end of the month. The UN's Office for the Coordination of Humanitarian Affairs (OCHA) has said that it is working with the Indonesian government to ensure that the camps meet international standards, in terms of health, educational, water and sanitation facilities, as well as appropriate layout – including addressing concerns such as access to privacy. The report recommends instituting a more integrated and multi-sector planning approach.

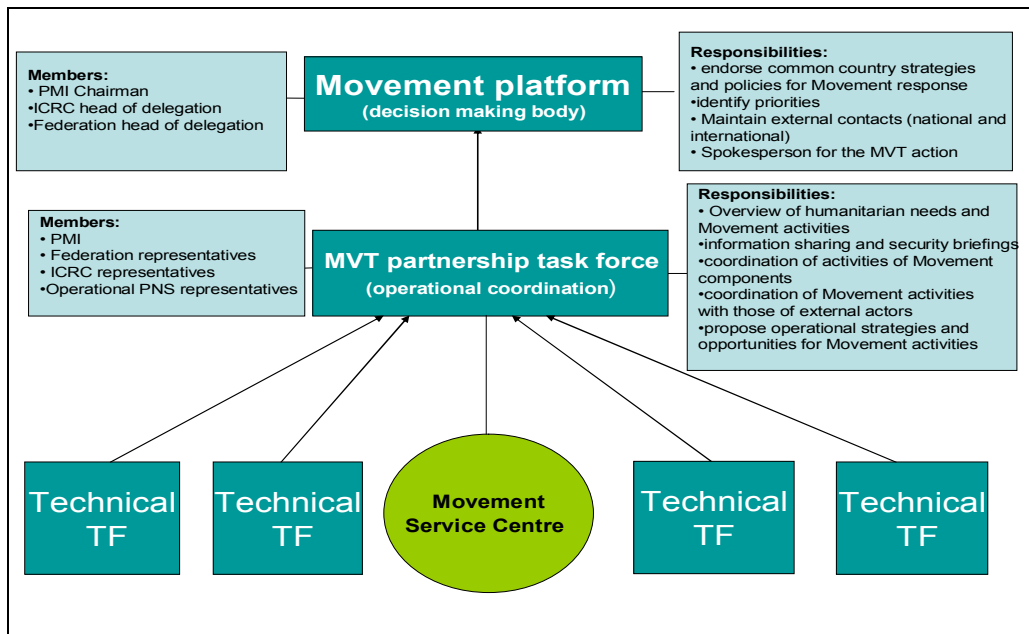
The Indonesian president has been quoted as saying that the blueprint of development in Aceh would be ready in three weeks. This will form the basis for the master plan for reconstruction of the affected area. According to the World Bank, countries affected by the tsunami are moving quickly into the rebuilding phase, thanks to all of the humanitarian assistance received. However, the task ahead remains monumental. The Indonesian Ministry of Public Works has estimated that debris in Aceh may not be cleared by the end of March, as originally hoped.

People are reported to be moving back into their traditional homes and there have been sightings of displaced people pitching tents on top of the foundations of their destroyed houses. The government has also begun restoring large infrastructure, setting up electricity poles and repairing roads, while local markets can be observed doing brisk business around the towns.

Coordination

PMI, ICRC and the Federation have now formally agreed on an operational framework for cooperation, intended to coordinate the International Red Cross and Red Crescent Movement's (the Movement's) humanitarian response in Indonesia in an efficient and coherent manner.

The Movement coordination will be managed on three levels: strategic, operational and technical. An overview of the coordination framework at field level is presented below:



This framework will be further detailed to reflect structures, roles and responsibilities in the field for the recovery programme. The framework provides for a number of partnership combinations, and does not preclude bilateral partnerships between partner national societies (PNSs) and PMI.

As part of the framework, the Federation will support PMI in establishing Movement service centres in Banda Aceh and Jakarta, and if required, in Medan. Specific services to be offered have been outlined in the overall framework agreement, and will be agreed upon with respective PNSs through a Memorandum of Understanding and/or Service Agreement.

A Red Cross and Red Crescent coordination meeting is being organized by PMI, ICRC and the Federation, to be held in Jakarta from 14-15 February which will focus on the rehabilitation and reconstruction phase of the tsunami operation.

A number of delegates have joined the Federation's tsunami operations team over the past few weeks to reinforce relief and logistics operations. These include:

In Banda Aceh

- Fleet manager (Swiss Red Cross)
- Air operations delegate (Swiss Red Cross)
- Administration delegate (Australian Red Cross)
- Water and sanitation delegate (Canadian Red Cross)
- Reporting delegate (Federation regional office in Kuala Lumpur)

In Jakarta

- Movement coordinator (Norwegian Red Cross) – also covering Banda Aceh
- Logistics delegate, dealing with procurement (Federation India delegation)

Replacements for a number of delegates in the field have now been approved and will be arriving over the coming weeks.

Visas

The Federation has been working with PMI to clarify the visa situation for delegates. Earlier reports regarding detailed procedures for entering Aceh province have now been clarified in terms of their application to Federation,

and Red Cross and Red Crescent delegates. A Blue Book for Aceh province is not required for personnel providing humanitarian assistance. Only foreign journalists are required to have one. However, police registration is still required for all foreign visitors.

PMI headquarters has been informed - confirmed in writing by the Immigration Service - that from 1 February, the following rules apply:

- All expatriate Red Cross and Red Crescent staff entering Indonesia without a previously obtained visa (i.e. obtaining at airport upon arrival) will be issued with a tourist visa for 30 days.
- All tourist visas from that date will only be extendable once and for 15 days only.
- After the 45 days, the person has to leave the country and obtain a new visa outside Indonesia for re-entry.
- Visas obtained outside Indonesia will be for 60 days and will be extendable once for 30 days only. After the 90-day period, the person has to leave the country to obtain a new visa for re-entry.

In effect, all visas issued in January are currently being dealt with in as above, as Federation delegates have only been granted 15 day extensions for visas to date. PMI is continuing to negotiate for leniency with the Immigration Service for delegates already in country, and hopefully this will be forthcoming soon.

Meanwhile, any delegates joining the operation for a period of more than one month will be obliged to obtain a visa prior to arrival.

In Banda Aceh, the UN interagency standing committee meeting discussed the issues of security, disease outbreaks and the movement of IDPs. The committee identified the need for increased dialogue with security agencies operating in the country and expressed concern over the movement of people in IDP camps. A variety of assessments on the situation and economy of communities in Aceh is underway.

Security

Although the situation for NGOs in Aceh is relatively stable, all Red Cross and Red Crescent staff and volunteers have been advised to be cautious in their movements from area to area as national security measures remain strict. Preliminary procedures for foreigner movements into Aceh have been increased on 1 February, while the outflow of goods from the Banda Aceh airport is being monitored more closely. Some minor incidents have been reported in outlying areas of Aceh, but no major security incidents have taken place. The Federation has applied for the use of VHF and HF radio and the request is being authorized by the Indonesian government; a network will be installed once the authorization is obtained. The PMI and Federation are complying with all national security rules and restrictions, while negotiating access to restricted zones.

Red Cross and Red Crescent action

Plans to relocate the Federation and PMI office in Banda Aceh are underway, as the current site is a business premise.

A large meeting was held in Medan between PMI branches on 1 February, where all branches reported on their operations to an assessment team formed by the national society to better coordinate PMI actions in the future. This also presented an opportunity for the Federation's Recovery Assessment Team (RAT) to share and discuss its assessment findings with the national society.

A constructive PNS meeting was also held on 1 February involving counterparts from PMI, ICRC and the Federation, where the activities of various PNSs were discussed and reported upon. Participants in this meeting included the Turkish, Saudi Arabian, Malaysian and French Red Cross and Red Crescent Societies; this was another important step in strengthening Red Cross and Red Crescent action in Aceh as a whole.

The Federation has begun implementing a host family programme which aims to standardize aid assistance provided, and enable the Movement to reach a wider target of vulnerable populations.

Overall Goal: Up to 100,000 internally displaced and otherwise affected families (approximately 500,000 people) in western Aceh receive adequate and timely emergency humanitarian assistance over the next six months.

Objective 1 (emergency relief): Basic supplementary food and non-food needs of the 500,000 IDPs and most vulnerable beneficiaries are met so that they can start rebuilding their future.

Progress / Achievements

Relief distribution is underway in Lam No, Calang, Teunom and has begun in Meulaboh and on Simeulue Island. All areas are well stocked with relief supplies and anticipating the arrival of ICRC family kits. Warehousing was up and running in all sites by 3 February. M6 trucks are also being mobilized into these logistical hubs in order to facilitate distribution of relief supplies. The relief programme has been expanded to include a host family programme and has begun implementing a ration card system for the duration of relief and the transition into recovery.

Banda Aceh and the northeast coast

The Federation's relief and water and sanitation coordinators met with ICRC in order to discuss the overall coordination of the Movement's response, specifically coordination of the northeast coast's distribution. Plans are underway to incorporate the Federation's hygiene kit distribution with the existing ICRC plan of distributing clean-up kits to 15,000 families in the northeast. It was agreed that the first month's distribution would be done within the ICRC distribution structure and future monthly distributions would be done by the Federation. Discussions also focused on contingency planning in the event of a 26 March pullout of NGOs, should the Movement as a whole be allowed to stay.

The Federation's relief delegate in Banda Aceh has been participating in the creation of the UN's Humanitarian and Early-Recovery Assistance Framework, aimed at ensuring options for people who lost homes and livelihoods and is active in two joint planning teams (livelihoods and shelter).

Procurement is now underway for 50,000 complementary food parcels and 17,800 stoves to be distributed in the western coast region.

Lam No

Daily distributions are taking place in and around Lam No for 4,200 families (21,000 beneficiaries), providing tarpaulins, blankets, hygiene kits and jerry cans. Two M6 trucks, delivered aboard a WFP off-loader, are to be used jointly by the Federation and the WFP.

Regular coordination with UNHCR and other agencies is occurring on a daily basis. A number of camps are due to be moved out of schools and government facilities in the near future. The Federation and other agencies are meeting with officials to discuss plans and clarify points. Apparent movement of IDPs continues in Llong. Further assessment plans are underway in coordination with ICRC's family linking delegate.

Evacuation and burial of bodies still continues, but on a much reduced scale. PMI is requesting the following materials to assist in this task: strong gloves, masks, sterilization spray, rubber boots.

Calang

Distribution of tarpaulins, hygiene kits, blankets and jerry cans is reaching 3,400 families (17,000 beneficiaries).

The Rubb hall construction was completed on 3 February with the help of German Red Cross' logistics. Warehouse space will be ready for shipments of ICRC family kits, due by 6 February via ship. Based on recent assessments, complementary distribution will be organized to Patang (6 km south of Calang), via helicopter. PMI volunteers continue to assess the surrounding areas and identify target beneficiaries.

Two additional M6 trucks, delivered aboard a WFP off-loader, are to be used jointly by the Federation and WFP.

Teunom

Daily distributions are reaching 3,200 families (16,000 beneficiaries) with tents, tarpaulins, hygiene kits, blankets and jerry cans.

The Rubb hall construction was completed on 3 February with the help of German Red Cross logistics. Warehouse space will be ready for shipments of ICRC family kits, due by 6 February from Meulaboh by truck convoy.

Civilian watch guards have been put in place to assure the security of relief goods in the warehouse.

Meulaboh

Relief supplies, (primarily tents, tarpaulins, blankets and jerry cans) are reaching 10,600 families or 53,000 beneficiaries. A total of three Rubb hall warehouses have been installed and are up and running. Currently the Federation team is finishing the off-loading of 13,800 family kits to the warehouse (3,200 of which will leave for Teunom by 5 February, and will require 27 truckloads along seriously damaged roads), as well as 27,600 sleeping mats, 55,200 blankets and 13,800 tarpaulins. The ship off-loads onto two landing craft, which convey supplies to the shore to be loaded by hand onto the Norwegian M6 trucks for storage in the Federation's Rubb halls. This operation will take about six days.

The Danish Red Cross' base camp is now fully operational. The PMI, which will shortly have to vacate the government building it had been loaned, will move into the camp. An office, kitchen and sleeping accommodation with latrines and showers are being put up with the help of the Spanish Red Cross and will be ready within two days. The base camp will then be the centre of operations for both the Federation and PMI.

PMI registration of IDPs is continuing. The Federation's relief delegate based in Banda Aceh visited PMI and the Spanish Red Cross' relief team in Meulaboh on 30 January, to assist with assessments of Reuma Sack areas (15-20 km from Meulaboh).

Simeulue Island

An assessment trip was undertaken to Simeulue Island on 31 January to coordinate relief activities with the PMI coordinator in the local branch. The Federation has assisted in renting a boat and truck to move the shipments to affected areas in the northern part of the island, where most damage occurred and remains inaccessible by road. Shipments of relief supplies from Medan to Simeulue have begun this week for 4,000 families (20,000 beneficiaries), initially carrying mainly tarpaulins and hygiene kits. Relief distribution of non-food items to 31 January is summarized below.

Relief Distribution – Total Beneficiaries Up to 31 January 2005		
	Families	Beneficiaries
Pre-positioned Stock ¹	5,800	29,000
Federation Appeal Stock	11,427	57,135
TOTAL	17,227	86,135

Non-food item Relief Distribution Up to 31 January 2005			
Non-food items	Pre-positioned stock	Federation Appeal	TOTAL
Tents	-	870	870
Tarpaulins	3,500	8,900	12,400
Kitchen sets	-	652	652
Hygiene Kits	2,700	4,736	7,436
Blankets	-	19,981	19,981
Jerry Cans	-	15,001	15,001
Family Kits	4,000	62	4,062
Baby Kits	-	-	0
Stoves	-	-	0
Mosquito Nets	-	-	0

¹ Distribution from pre-positioned stock during the first weeks of the emergency was concentrated primarily on Banda Aceh and Aceh Besar, as well as the outlying communities of Biren, Pidie and Lhok Sumawe.

Impact

Non-food item relief goods have been distributed to an estimated 86,135 beneficiaries since the beginning of the emergency operation. Distribution has expanded to cover Meulaboh and Simeulue Island, as well as surrounding communities. Relief distribution has been increasing steadily now that the relief pipeline, warehousing and onward transport are all in place.

Constraints

- Due to the decrease in numbers of PMI volunteers in Lam No and Teunom, the current rotating group of volunteers has been working extremely hard. Aside from the unloading, loading and distribution of relief supplies, volunteers are also conducting regular assessments, excavating bodies and working on family tracing activities with ICRC. This has been discussed with PMI and more volunteers are expected to arrive in the communities throughout the week.
- Continued difficulties include restricted access into surrounding communities, specifically into the interior, away from the coastal areas.
- In Calang there has been pressure on agencies not to hire local off-loading crew so as not to take the labour pool away from the TNI.
- On various occasions relief shipments by boat have reported missing items. Relief delegates have been reporting these discrepancies. Follow-up with boat captains and loading crews is currently being addressed by logistics.
- Logistical problems (road access due to break downs and accidents) are slowing the distribution flow in and around Meulaboh.

Objective 2 (logistics): PMI will have a strengthened supply chain capability and capacity to ensure timely transport of material and human resources to the areas of operation.

Progress / Achievements

The Banda Aceh sub-office currently has four Land Cruisers and one pick-up truck, four rental cars, one rental minibus, three M6 trucks (which are shared with PMI) and one Mercedes Benz truck. The operation also has one Land Cruiser each in Teunom, Calang and Meulaboh. There are five hired drivers for Land Cruisers and the pick-up and five truck drivers for four trucks. Three of these trucks have been sent to Sigli in an effort to open up the eastern coast for distribution.

A new contract has been reached for use of the second Bell 212 being used out of Banda Aceh for delivery of relief supplies along the west coast. This is in addition to the Sikorsky and Bell 212 helicopters currently being used exclusively by the Federation for transporting heavy relief cargo, as well as shuttling PMI volunteers and ERU teams to the field. Authorization has been obtained to move all Federation air operations to the commercial airport. A small warehouse has also been secured to support the helicopter operations. Six boats are currently in use to deliver relief goods by sea to the more inaccessible communities along the west coast.

The use of the Hercules C-130 out of Batam has been extended until 8 February.

The Federation now has the use of a charter aircraft (a one-engine Cessna Caravan) which can carry up to 12 passengers and 1.5 tonnes of cargo. It has been secured for travel within the operational area. Commercial airlines remain the best option for travel between Jakarta and Medan. With effect from 31 January, the daily route will be the following, subject to last minute changes:

▪ Dep. Medan	0600	Arr. Meulaboh	0715
▪ Dep. Meulaboh	0730	Arr. Banda Aceh	0830
▪ Dep. Banda Aceh	0900	Arr. Meulaboh	1000
▪ Dep. Meulaboh	1015	Arr. Medan	1130

This means that all bases will be covered daily and access will be easier.

Impact

A coordinated logistics operation and team is now in place, with the capability to deliver and store 1,000 MT of relief goods per week, as well as ERU equipment and support personnel, using both air and sea routes.

Supply lines have been established to four distribution points (Lam No, Calang, Teunom and Meulaboh), through two marshalling areas (Meulaboh and Banda Aceh), supported by a national and international hub (Medan and Batam, respectively).

Constraints

In Banda Aceh, the fleet is working well – although there is concern about the lack of availability of spare parts for the Land Cruisers. This is being addressed by the Federation's fleet base in Dubai. Procurement is also proving to be somewhat of a challenge, as it has not always been possible to get the required number of quotes, due to the disruption of the local economy. The situation is said to be stabilizing.

Helicopter missions (Helimissions), which the Federation uses on a daily rental basis for small cargo and delegate field trips, continue to require advance booking. Last minute changes in plans on the part of visitors disrupt the carefully planned schedule, requiring quick re-organization of planned deliveries.

Objective 3 (health): primary health care service provided to the tsunami-affected communities and potential epidemics are prevented or adequately addressed.

Progress / Achievements

PMI continues to be proactive in covering the health needs of people in Aceh and, with its network of volunteers and branches already in existence in the areas affected by the tsunami and earthquake, has been able to reach many outlying communities. The national society has divided its health activities into three main geographical localities: the areas around Meulaboh, Sumatera Utara, and another area covering Banda Aceh, Aceh Besar and Teunom. Other than a hospital base, each of these geographical centres has clinics and mobile units within the division's territory.

Information is in the process of being collated by the branches, according to standards set by PMI headquarters. Details have recently become available for Banda Aceh, Aceh Besar and Teunom where the PMI is carrying out health activities in Lambaroh, Lokh Nga, Calang, Teunom and Darulsalam. A health clinic was also set up in Gantho, but the society has withdrawn from this mountainous area as the clinic has been successfully integrated into the local community. The PMI is also considering setting up another clinic in Pidie, depending on the availability of professional staff and the capacity of the society. Mobile units are being supported by various PNSs operating in the country, with one to three units deployed a day. These medical units are serviced by 20 to 25 doctors, 25 to 30 paramedics and administrative staff who rotate on a regular basis.

Hospitals and clinics in this area have official medical records of 1,000 people treated to date, and an unrecorded number of some 1,750 patients. The PMI have only begun recording patient numbers since 29 January, as it was not possible for them to do so during the initial emergency phase. They are currently treating 200 patients on average a day, and the latest record was 245 patients treated on 1 February 2005. At the onset of the disaster, the majority of treatment provided by PMI-supported health services was for severe physical injuries. This has stabilized and patients now come with illnesses reflecting the condition of communities in the post-disaster phase where there is poor sanitation and exposure to decaying bodies, such as scabies, respiratory diseases, acute gastroenteritis and psychological trauma.

German Red Cross' basic health care unit (BHCU) – Teunom

The BHCU continues to treat on average 75-90 patients per day in the outpatient department (OPD) and 10-14 admitted patients, mainly with malaria and/or diarrhoea, and a few infected wounds. At 30 January, a total of 2,519 patients had been treated.

Japanese Red Cross BHCU – Meulaboh

Patient numbers at the Japanese Red cross BHCU have continued to increase, with the clinic having treated a total of 324 patients between 25 and 30 January and seeing on average 100 patients per day. The IDP population at the camp is now estimated at 1,850 people, and rising. The Japanese Red Cross is undertaking a survey of IDP needs in the camp.

The Japanese Red Cross' team continues to provide surgical and emergency support to the hospital. The mobile clinic is pursuing its activities in the outlying areas of Kuala Bhee, Pasi Janeng and Nagan Raya. Vaccination activities are also ongoing, with an additional 246 people inoculated against measles in Kaway and Bubon, as well as 126 tetanus vaccinations.

Impact

There are no reports of abnormal disease outbreaks. The ERU BHCUs and PMI continue to offer basic and specialized health care to an estimated 74,000 beneficiaries.

Red Cross and Red Crescent	Communities served	Activities	Beneficiaries	Constraints / Comments
German Red Cross ERU BCHU (as from 10 January 2005)	Teunom	<ul style="list-style-type: none"> ▪ Basic health care services 	<ul style="list-style-type: none"> ▪ Serving a population of up to 20,000 ▪ 75 patients / day (OPD) – cumulative (30/01): 2,519 	Team rotation now complete.
Japanese Red Cross ERU BCHU (as from 4 January 2005)	Meulaboh + outlying communities (Aceh Barat, Nagan Raya)	<ul style="list-style-type: none"> ▪ Medical support to Cut Nyak Dhein hospital (ICU, ER, OT) ▪ BHCU in IDP camp ▪ Needs mapping in outlying villages ▪ Mobile health clinic to IDP camps ▪ Measles + tetanus vaccination 	<ul style="list-style-type: none"> ▪ Up to 90 patients / day overall at the hospital. ▪ BHCU in IDP Total patients (25-30 January): 324 ▪ Vaccinations (to 29 Jan): tetanus: 1728 measles: 460 	Health assessment being carried out on Simeulue Island
Norwegian Red Cross with ICRC Hospital (as from 16 January)	Banda Aceh	Referral Hospital	2,500 OPD (16-30 January) + average of 44 in-patients / day	Also setting up a camp for discharged patients (up to 400)
PMI	Banda Aceh, Lam No, Calang, Simeulue Meulaboh	<ul style="list-style-type: none"> ▪ 15 health posts and 11 mobile health teams ▪ 34 doctors and 28 paramedics / nurses ▪ Doctor working with GRC BCHU + 30 PMI volunteers 	Estimated cumulative total of 70,000 patients (at 27 January)	<p>8-12 teams operational at any one time.</p> <p>Other teams deployed directly by PMI chapters to affected area.</p>

Objective 4 (water and sanitation): the spread/outbreak of infectious diseases is prevented through water and sanitation interventions.

Progress / Achievements

Rotating groups of PMI volunteers working on water and sanitation projects in Aceh are planned for 6 February, with 10 volunteers for the French Red Cross' water and sanitation ERU in Sigli and Salamanga and a team in reserve for the one from the Austrian and Swedish Red Cross Societies in Aceh.

At PMI's request, Indonesia's Ministry of Public Works has provided two trained teams on 1 February to bore shallow wells in Calang (13), Teunom (10) and Leupeung (2), where wells have been contaminated by seawater. To assist the government teams, PMI has contributed four volunteers to the project (two per team), and the Federation will coordinate helicopter transport for the team to Calang, while the remaining team will truck to Leupeung. These teams and their volunteers will carry pipes, hand-pumps, cement and other well-boring tools with them, and will be accompanied by logistics personnel.

Impact

Water and Sanitation ERU	Distribution / litres	Means of Distribution	Beneficiaries	Constraints / Comments
Spanish Red Cross Meulaboh (from 5 January)	<ul style="list-style-type: none"> ▪ Up to 300,000 L specialized water / day. ▪ All 5 specialized water units in operation (23/01). ▪ Team reached the 6 million L distribution mark on 03/02 	<ul style="list-style-type: none"> ▪ 9 municipal trucks of 3,500t capacity + 2 SRC 7,500L water tankers + 1 UN truck of 16,000L capacity; ▪ 80 trips daily 	<p>Specialized water to 4,000 families + estimated 20,000 IDPs in 4 camps + Japanese Red Cross BHC team + other agencies as requested.</p> <p>Offering only laboratory water testing in the area.</p>	Population now moving back to traditional areas, need for rehabilitation work.
French Red Cross Samalanga and Sigli (from 10 January)	170,000 L / day + 120,000 L per day specialized water	<ul style="list-style-type: none"> ▪ By tap and 6 tanker trucks. ▪ 40 x 3000L tanks used for distribution points 	20,000 IDPs at 21 sites – fluctuating with movement of IDPs	Demand steadily increasing.
German Red Cross Teunom (from 10 January)	36,000 L/ day	5,000 L + 6x1500L bladder tanks set up in town and IDP areas	BHCU + min. of 2,000 IDPs. Est. total of 5,000.	Support needed for fuel.
Swedish / Austrian Red Cross Lam No / Patek (from 31 January)				Working on sanitation activities in the 2 locations.

Objective 5 (telecommunications): fast and reliable means of communication is secured in the areas of the relief operation.

Progress / Achievements

The VHF license application is still in progress. Until Federation frequencies have been approved, UN/WFP NGO VHF frequency can be used for coordination. Two Motorola VHF base stations (Banda Aceh and Meulaboh) and 75 Motorola GP360 VHF handsets have been ordered - 40 for Banda Aceh, 20 for Meulaboh and 15 for delegates in the field. Repeaters cannot be ordered until Federation repeater frequencies have been confirmed.

A local company, Telematika, has contributed six technicians and some VHF and HF equipment to PMI. The technicians will be divided into two teams that will be sent to Aceh next week to set up VHF and HF for PMI in the following locations: Jakarta, Medan. Banda Aceh, Meulaboh, Calang, Teunom, Lhok Nga, Lam No, LhokSameuwe, Jantho, and Simeulue. ICRC is currently investigating whether any additional equipment is needed in other branches.

Banda Aceh is currently using WiFi broadband internet. The connection has been granted free of charge until the end of February. As the WiFi connection does not allow CCmail connections, a GAN has been set up to provide emergency CCmail connection. The Federation's telecommunications delegate is working to establish another VSAT connection for Banda Aceh.

IBM is setting up a 30-kilometre hotspot in Banda Aceh, free-of-charge for three months. It is proposed to use this system once the testing period is over, and to use WiFi connection as back-up.

The Meulaboh sub-office is currently using Mini-M as the only connection for CCmail. A GAN has been sent to Meulaboh, and will be set up as soon as possible. In addition, VSAT connection is being negotiated at the moment.

The Medan sub-office is using dial-up connection, which will be maintained until the office moves to a new location.

PMI is using WiFi connection in Banda Aceh, VSAT in Medan and Meulaboh, and a VSAT is being set up in Calang. The donation is for six months, so negotiation of contract renewals can be done later. VSAT bandwidth is very small, 64 kbps in Banda Aceh and 48 in Meulaboh, and the VSATs are connected directly to PMI in Jakarta. The Federation/PMI will need another connection for Internet access.

A small pool of satellite telephones (four Mini-M, three Iridium) is available in Banda Aceh sub-office for field delegates. Ten Thuraya handsets are being delivered – two for Meulaboh, four for Banda Aceh and four for the field.

Constraints

- With only one full-time telecommunications delegate/coordinator, coordination and planning are proving difficult, as support is needed almost every day in different locations. More telecommunications staff has been requested, and is urgently needed.
- Internet service provider (ISP) problems in Banda Aceh are causing internet connectivity loss, but very few technicians and ISPs are available in Banda Aceh, which makes it difficult to resolve the problem.
- VSAT equipment can be procured locally, but a three to four week waiting time is expected.
- Mobile networks are running but as the networks are still congested, placing a call can be difficult.
- All delegates in the field still do not have satellite telephones, making coordination and updating difficult.
- Port filtering from many ISPs is causing big problems, and makes it very difficult to negotiate ISP dial-up / leased line / VSAT contracts.

Sri Lanka

Foreign troops are scaling down their tsunami relief operations in Sri Lanka with most of the ships and aircraft expected to leave the island by mid-February. Meanwhile, the Sri Lanka Red Cross Society (SLRCS) continues its relief operations in the country, supported by the Federation and ICRC. Food and non-food items have been distributed to some 26,000 families through the national society, and seven Federation emergency response units (ERUs) continue to operate, providing drinking water, health support, medical assistance and logistics support.

<http://www.colombopage.com/archive/February1135307JV.html> - TOP#TOP

Although the emergency phase of relief operations is almost over, ICRC will continue to assist people in very isolated areas and is also drawing up a plan of action to cover people's basic needs in the north and the east for the next six months. Furthermore, ICRC has also extended its presence on crossings between government and Liberation Tigers of Tamil Eelam (LTTE)-held areas to facilitate the passage of humanitarian aid and civilians, at the request of the Sri Lankan government and the LTTE.

For maps and reports on the general background of the disaster in Sri Lanka please refer to <http://www.lk.undp.org/ndmc/>

Rehabilitation

Preliminary damage and needs assessments by the Asian Development Bank, the Japan Bank for International Cooperation and the World Bank, together with the Sri Lanka government, has indicated that approximately USD

1.5 billion will be needed to effectively implement a recovery plan and reconstruction strategy for the country. A large proportion of damage has concentrated on housing, transport, tourism and fisheries. To address the emergency, the three donor agencies have indicated financial commitment to Sri Lanka amounting to USD 500 million.

Meanwhile, the Ministry of Health (MoH) has prepared a list of all health facilities which need reconstruction, rehabilitation or improvement. The list includes hospitals which may not have been directly damaged by the tsunami, but are stretched to provide services for patients referred from affected areas. Thirty-two of these structures, including one hospital in each affected district, will be repaired by SLRCS, together with the Federation and ICRC.

Coordination

There are currently 25 participating national societies (PNS) present in Sri Lanka. More than 200 delegates are working in the country comprising the Federation's country delegation and emergency response units, ICRC and PNS. Discussions are continuing between the Movement coordinator and PNS based in Sri Lanka, with the aim of firming up coordination mechanisms between PNS and the Federation.

The British Red Cross' logistics ERU has started the process of integrating into the Federation's delegation. Financial responsibility was handed over this week, with the Federation delegation now paying all running and operational costs. The logistics ERU has been coordinating well with the ICRC logistics team and plans are underway to share warehouse space in Ratmalana. Discussions continue on other ways in which a joint approach could be mutually beneficial.

Red Cross and Red Crescent action - objectives, progress/achievements, impact, constraints

Overall Goal: Up to 40,000 families (about 200,000 people) in the south of the country receive immediate relief, shelter, health and care, and community support over the next six months.

Objective 1 (water and sanitation): Adequate sanitation and water supply provided to a selected number of temporary shelters/welfare centres, and water and sanitation systems to serve the affected population.

(No changes reported since [Operations Update no. 34](#) focusing on water and sanitation was issued two days ago).

Objective 2 (shelter): Temporary shelter provided to up to 15,000 families (about 75,000 people) whose houses have been destroyed and have no extended family to live with.

Progress / Achievements:

The American Red Cross' ERU, together with the SLRCS Ampara branch, distributed nearly 5,300 tarpaulins (including 226 tents) to families in Pottuvil, bringing the total number of families assisted in eastern Ampara district to over 2,700. People in the area are still in need of shelter and the team is visiting sites to ascertain beneficiaries for the tents at hand.

Impact:

Since the start of distributions, over 28,000 tarpaulins and tents have been distributed by the Federation/SLRCS providing much needed shelter to affected families. During the past week, some 208 tents were distributed in Pottuvil to 196 families and a further 12 were given to the local MoH, at their request, in order to supply one tent per camp for medical purposes. Tarpaulins continue to be a valuable item to the beneficiaries.

Constraints:

Distributions are going well, but the lack of stock in the Ampara warehouse has prevented the relief team from distributing more tarpaulins. The issue of standardization of relief items is also still being addressed.

Objective 3 (immediate livelihood restoration): The minimum livelihood requirements provided for up to 40,000 families (about 200,000 people) whose houses have been destroyed and have lost their belongings.

Progress /Achievements

The past five days of relief distributions in the Ampara district has seen 60 trucks and a total of 250 MT of goods go out from the American Red Cross' ERU warehouse. Standard Federation non-food relief items (NFRI) distributions by SLRCS and the ERU recently extended from Pottuvil to Arugam Bay, which can only be accessed by barge as the bridge connecting the two points is down. Supplies have been ferried across the bay by inflatable boats provided by the Canadian Dart Team, a boat provided by the Sri Lankan Navy and a makeshift ferry (a wooden platform across two small boats with outboard motors) provided by the Sri Lankan government. On the other side, supplies have been transported to the two distribution centres on trailers pulled by farm tractors. Distributions are being carried out in schools, hotels, camps and other community centres and altogether some 3,000 families have been assisted.



Red Cross relief supplies being ferried by barge at Arugam Bay.

In southern Galle district, distributions have reached over 14,500 families, or some 60,000 beneficiaries in 62 sites. Blankets, hygiene kits, jerry cans, kitchen sets, bed sheets and sleeping mats continue to be in demand, as they are on the east coast. Distribution of relief items to the most affected east and south coastal areas has topped 17,500 families, bringing the total number of families assisted by the Federation/SLRCS to nearly 26,000.

Constraints:

As of 31 January, distribution in the Ampara district extended to Sinna Ullai, south of Pottuvil. However, with the bridge connecting Pottuvil and Arugam Bay destroyed by the tsunami and small boats the only means of transportation, the distribution process has been slowed down.

Some early confusion in pipeline and commodity tracking is starting to be resolved by the British Red Cross' ERU, but it is taking time to clear mistakes when paperwork was never in place. It is imperative that paperwork arriving by aircraft or ship is in good order as customs and import have become much stricter, with the latitude shown during the emergency phase now over.

Objective 4 (health): A constant, good level of health is ensured for up to 20,000 families (about 100,000 people) through prevention and basic health care, as well as health and hygiene promotion.

(No changes reported since [Operations Update no. 35](#) focusing on health was issued yesterday).

Objective 5 (psychosocial support): The resilience of the affected population and the local relief workers is enhanced through psychosocial support.

(No changes reported since [Operations Update no. 23](#)).

Capacity of the National Society

Most posts in the British Red Cross' logistics ERU are to be handed over to national staff as soon as possible, but this will require training. With national staff numbers rising (a few now on Federation contracts, and more formal recruitment is ongoing) the logistics team now stands at more than 100 people, with about 50 loaders/labourers, 30 truck drivers, nine storekeepers, six drivers, two administrative assistants and eight delegates.

Volunteers in Ampara district have been carrying out very organized distributions with the American Red Cross' ERU; the capacity of this newly formed office of SLRCS is increasing daily.

Communications – Representation, Advocacy and Public Information

The Federation's information delegates and the media department of SLRCS continue to provide media coverage, photo exchange, stories and interviews to the local and international media.

Maldives

Overview

Although government staff assigned to the Disaster Management Centre returned to normal duties, the coordination mechanisms continue to work well. It has been decided to retain the centre for the time being.

The shortage of doctors previously reported has been solved by recruitment by the Commonwealth Secretariat.

A water and sanitation delegate has now joined the delegation in Male and is reviewing the programme on the basis of the FACT findings.

Red Cross and Red Crescent action - objectives, progress/achievements, impact, constraints

Overall Goal: Tsunami affected families in Maldives receive immediate non-food relief, shelter, electricity, health, water and sanitation services; and a national society is established.

Objective 1 (Shelter): Temporary shelter provided for 3,440 families and permanent shelter material provided for 5,500 families whose houses have been completely or badly damaged.

Progress/Achievements:

Some 3,000 sheets of corrugated iron sheeting have arrived by air, representing the first consignment of an initial order for 21,000 sheets to provide temporary housing and material to repair damaged houses.

A visiting Federation construction delegate has been assisting in defining a project for permanent housing. After discussion with the government, it is possible that the Federation may contract to build new houses and community facilities for up to 3,000 people in one of the worst affected atolls. This project concept needs further research and definition in collaboration with the government. The delegation is actively liaising with other organizations involved in housing to assure a coordinated approach.

Objective 2 (immediate livelihood restoration): electric power restored for 30,000 people and the minimum livelihood requirements supported for 2,000 families whose houses have been destroyed or badly damaged, and have lost their belongings.

Progress/Achievements:

Nineteen of the 24 generators provided are now on line in their island locations. One generator is being used as emergency back up, leaving four to be installed. Those installed are providing electricity to 13,778 people.

Negotiations with the government over further needs are now being finalized. Another eight generators are needed (and not 12 as earlier indications suggested). In addition, the Federation has been requested to provide 18.5 km of cable, plus 203 distribution boxes and their associated switch gear. A problem in the past has been the poor maintenance of electricity generators. The Federation is looking to help address this issue by providing tools and meters to maintain all the generators provided, plus training for technicians to foster operational maintenance.

Objective 3 (health): the physical and mental health of the affected population is ensured through the provision of needed basic medical supplies and psychosocial support.

(No changes reported since [Operations Update no. 35](#) focusing on health was issued yesterday).

Objective 4 (water and sanitation): about 5,000 people have access to adequate water and sanitation facilities.

(No changes reported since [Operations Update no. 34](#) focusing on water and sanitation was issued two days ago).

India

Emergency relief activities of the Indian Red Cross Society (IRCS) have effectively been completed in the affected areas coming up to six weeks after the disaster. State branches are continuing relief activities where required such as provision of cooked food in camps and provision of basic health care.

All Red Cross-supplied water purification plants located in and around the Andaman and Nicobar Islands capital, Port Blair, are operational. These produce 100,000 litres of clean drinking water daily thus supporting 1,300 families per day. Consultants from the Spanish and Indian Red Cross Societies have come back from Andaman after signing a protocol with the water works department there which has agreed to maintain the plant and return it back to the ONS.

The Indian Red Cross Society and the Federation have continued developing rehabilitation plans. Short term recovery needs identified are:

- livelihood restoration;
- disaster preparedness;
- branch support.

Longer term recovery needs identified are:

- reconstruction in Andhra Pradesh, Tamil Nadu and Kerala;
- disaster management in Andhra Pradesh, Kerala and Tamil Nadu;
- health and water sanitation in Andhra Pradesh, Kerala and Tamil Nadu;
- branch development and capacity building; and,
- humanitarian values.

Decisions on rehabilitation plans in the Andaman and Nicobar Islands and Pondicherry have been deferred due to low branch capacity in those regions.

In addition to these short and longer-term needs, the Indian Red Cross has prioritized other needs:

- Replenishment of 30,000 and pre-positioning of 20,000 family packs of non-food items and procurement of 20,000 family tents for further needs and pre-positioning as disaster preparedness stock for future response.
- In-depth technical assessment to be undertaken for implementation of short- and long-term recovery needs in Andhra Pradesh, Kerala and Tamil Nadu. The terms of reference and time frames are being finalized along with appointment of a leader and members of the assessment team in the next couple of weeks. It is intended to conduct the assessments between mid-March to mid-April 2005.

The Indian Red Cross is working with PNS, discussing rehabilitation plans and possible funding/support. A full list of relief items mobilized by the Indian Red Cross since 26 December has been compiled and is available from the delegation in India on request.

Outstanding Needs

Human Resources

The recruitment of Federation delegates for Sri Lanka, Indonesia, and Maldives continues, and 14 posts remain to be filled, as detailed below. The recruitment for a logistics coordinator for the Banda Aceh operations centre (with strong procurement skills and knowledge of Federation systems) remains an urgent priority.

Place of assignment	Positions to be filled
Sri Lanka	Head of delegation, organizational development delegate, recovery programme coordinator, water and sanitation delegate, water and sanitation coordinator, disaster management delegate, logistics delegate
Indonesia – Jakarta	Head of operations (in acceptance process), recovery programme coordinator
Indonesia – Banda Aceh operations centre	Logistics coordinator, relief coordinator, water-sanitation coordinator, IT delegate,
Indonesia – Medan sub-office	Medical logistics delegate

Relief Needs

The following table summarizes the major outstanding material needs in the affected countries under this Revised Preliminary Appeal. Any national societies wishing to contribute to the relief pipeline are kindly requested to contact the logistics department at the Federation secretariat in Geneva (contact details below).

Country	Major outstanding needs		
Indonesia	42,500 hurricane lamps 77,334 lengths of rope 179,840 bars of body soap	8 dispensary tents 212,500 sleeping mats 17,800 kerosene stoves	250,000 hygiene parcels 5,000 volunteer/evacuation kits 4 Rubb hall warehouse tents
Sri Lanka	22,221 Kitchen sets	200,000 pieces women's underwear	
Maldives	10 motor pump kits	10 repair kits	17 water tank pillow kits
Myanmar	8,500 kitchen sets		

For further information specifically related to this operation please contact:

In Asia:

- India, New Delhi: Bob McKerrow, Head of Regional Delegation; phone: +91.11.2685.8671, mobile: +91.98.1000.1534; email: ifrcin02@ifrc.org.
- Sri Lanka: Alisdair Gordon-Gibson; Head of Delegation; phone: +94.77.755.7001
- Indonesia: Ole J Hauge, Head of Delegation; phone: +622 1791 91 841; mobile: +628 11 824 859; fax: +622 1 79180 905; email: ifrcid01@ifrc.org and Latifur Rahman, Disaster Management Delegate; phone: +62.811.82.6624; fax: +62.217.18.0905 email: ifrcid05@ifrc.org
- Myanmar: Joanna Maclean, Head of Delegation, phone: +95.1.383686 email: ifrcmm01@redcross.org.mm
- Malaysia: Dr Selva Johti, National Disaster Management Chairman, Malaysian Red Crescent Society; phone: +60.2.6138.2325, mobile: +60.1.2234.0310; fax: +60.3.6138.2325
- Thailand: Lt. Gen. Amnat Barlee, Director of Relief and Community Health Bureau, Thai Red Cross; phone: +66.2.251.7853 ext. 2202/251.7442, fax: +66.2.252.7976; email: abarlee@webmail.redcross.or.th
- Thailand, Bangkok: Dr. Ian Wilderspin, Head of Disaster Risk Management Unit, phone: +662.640.8211; fax: +662.661.8220; email: ifrcrh22@ifrc.org and Bekele Geleta, Head of Regional Delegation; mobile: +66 18215495; email: ifrcrh23@ifrc.org

In Geneva:

- Iain Logan, Head of Tsunami Operations Coordination, Geneva; +41.22.730.4258, email: iain.logan@ifrc.org
- Indonesia: Charles Evans, Southeast Asia Desk, Geneva; phone: +41.22.730.4320; fax: +41.22.733.0395; email: charles.evans@ifrc.org
- Sri Lanka: Suzana Harfield, Desk Officer, Geneva; phone: +41.22.730.4353; email: suzana.harfield@ifrc.org
- Myanmar, Malaysia, Thailand, Maldives and Somalia: Wilson Wong, Desk Officer, Geneva; phone: +41.22.730.4302; email: wilson.wong@ifrc.org
- India: Jagan Chapagain, Desk Officer, Geneva; phone: +41.22.730.4316; email: jagan.chapagain@ifrc.org
- Media Department, Sian Bowen, phone: +41.22.730.4428; email: sian.bowen@ifrc.org
- Logistics Department for mobilization of relief items, Erling Brandtzaeg, logistics officer for Indonesia and Myanmar, Geneva; phone: +41.22.730.4269; email: erling.brandtzaeg@ifrc.org, Mauricio Bustamante, logistics officer for Sri Lanka and Maldives, Geneva; phone: +41.22.730.4267; email: mauricio.bustamante@ifrc.org and Isabelle Sechaud, general coordination of tsunami operations logistics cell, Geneva; phone: +41.22.730.4367; email: isabelle.sechaud@ifrc.org

In Africa:

- Nairobi Regional Delegation; Anitta Underlin, Federation Head of Eastern Africa Regional Delegation, Nairobi; email: ifrcrke03@ifrc.org; Phone: +254.20.283.51.24; Fax +254.20.271.84.15; Steve Penny, Regional Disaster Management Coordinator; Phone: +254.20.283.5117; Fax: +254.20.271.8415; email: ifrcrke78@ifrc.org
- In Geneva: Josse Gillijns, Regional Officer for Eastern Africa, Africa Dept.; email: josse.gillijns@ifrc.org; Phone: +41.22.730.42.24; Fax: +41.22.733.03.95

All International Federation assistance seeks to adhere to the [Code of Conduct](#) and is committed to the [Humanitarian Charter and Minimum Standards in Disaster Response](#) in delivering assistance to the most vulnerable. For support to or for further information concerning Federation programmes or operations in these or other countries, or for a full description of the national society profiles, please access the Federation's website at <http://www.ifrc.org>

[Contributions list below; click here to return to the title page.](#)

Asia - Earthquake and Tsunamis

ANNEX 1

APPEAL No. 28/2004

PLEDGES RECEIVED

04/02/2005

DONOR	CATEGORY	QUANTITY	UNIT	VALUE CHF	DATE	COMMENT
-------	----------	----------	------	-----------	------	---------

CASH

REQUESTED IN APPEAL CHF ----->				183,486,000	TOTAL COVERAGE 107.7%	
AFRICAN UNION		100,000	USD	113,200	06.01.05	EAST AFRICA
ALBANIA - RC		14,960	USD	16,935	27.01.05	
ANDORRA, PRINCIP. - GOVT		60,000	EUR	92,580	21.01.05	
ANDORRA, PRINCIP. - PRIVATE DONOR				3,086	12.01.05	
AUSTRIA - GOVT/RC		450,000	EUR	694,350	10.01.05	MEDICAMENTS, HYGIENE GOODS , PARCELS
AUSTRIA - RC		1,500,000	EUR	2,314,500	27.01.05	
AUSTRIA - PRIVATE DONOR		2,080	EUR	3,221	01.02.05	
AUSTRALIAN - RC		2,400,000	AUD	2,119,200	30.12.04	
AUSTRALIAN - RC		7,300,000	AUD	6,445,900	31.12.04	
AUSTRALIAN - GOVT		4,800,000	AUD	4,238,400	02.01.05	
AUSTRALIAN - RC		3,000,000	AUD	2,647,500	24.01.05	
AUSTRALIAN - RC		3,000,000	AUD	2,647,500	25.01.05	
AZERBAIJAN - PRIVATE DONOR				102	18.01.05	
BAHRAIN - PRIVATE DONOR		50,000	USD	56,600	06.01.05	
BANGLADESH - RC		428,737	BDT	8,275	11.01.05	
BELGIUM - RC/GOVT		7,186	EUR	11,088	31.12.04	PROGRAMME SUPPORT/KIND
BELGIUM - RC		500,000	EUR	771,500	01.01.05	
BELGIUM - RC		600,000	EUR	925,800	20.01.05	
BOLIVIA - RC		5,356	USD	6,063	24.01.05	
BOSNIA & HERZEGOVINA - RC		42,948	EUR	66,269	21.01.05	
BRAZIL - PRIVATE DONORS				2,997	18.01.05	
BRAZIL - RC		200,000	USD	226,400	28.01.05	
BRITISH PETROLEUM FOUNDATION		1,000,000	USD	1,145,000	29.12.04	
BRUNEI - PRIVATE DONORS		30,285	USD	34,282	05.01.05	INDONESIA
BRUNEI - PRIVATE DONOR		3,600	USD	4,075	04.01.05	
BULGARIA - PRIVATE DONOR		10,000	EUR	15,430	14.01.05	
CAMBODIA - GOVT/RC		10,000	USD	11,320	05.01.05	
CANADIAN - GOVT		3,465,000	CAD	3,336,795	31.12.04	
CANADIAN - GOVT/RC		990,000	CAD	953,370	26.12.04	
CANADIAN - RC		200,000	CAD	192,600	27.12.04	
CANADIAN - RC		5,000,000	CAD	4,815,000	29.12.04	
CANADIAN - RC		8,000,000	CAD	7,520,000	20.01.05	EVALUATION OF ACTIVITIES
CANADIAN - PRIVATE DONOR		100,000	USD	113,200	06.01.05	
CANADIAN - PRIVATE DONORS				570	17.01.05	
CHINA - HONG KONG - RC BRANCH				3,713,771	04.01.05	FAMILY KITS INDONESIA
CHINA - HONG KONG - RC BRANCH				3,238,470	29.12.04	TO PURCHASE RELIEF ITEMS
CHINA - HONG KONG - RC BRANCH				1,560,515	01.01.05	
CHINA - HONG KONG - RC BRANCH				2,971,017	03.01.05	FAMILY KITS INDONESIA
CHINA - HONG KONG - RC BRANCH				441,177	07.01.05	PROCUREMENT OF IRON SHEETS MALDIVES
CHINA - HONG KONG - RC BRANCH				593,246	13.01.05	PROCUREMENT FOR MYANMAR, OF RELIEF ITEMS
CHINA - HONG KONG - PRIVATE DONORS				3,373	04.01.05	
CHINA - MACAU - RC BRANCH				500,000	26.12.04	WATER & SHELTER; MEDICAL & RELIEF SUPPLIES IN INDONESIA
CHINA - MACAU - RC BRANCH				280,000	30.12.04	SRI LANKA
CHINA - MACAU - RC BRANCH				780,000	14.01.05	INDONESIA, MALDIVES, SRI LANKA, EAST AFRICA

Asia - Earthquake and Tsunamis

ANNEX 1

APPEAL No. 28/2004

PLEDGES RECEIVED

04/02/2005

DONOR	CATEGORY	QUANTITY	UNIT	VALUE CHF	DATE	COMMENT
CHINA - RC		50,000	USD	56,500	31.12.04	THAILAND RC DIRECT
CHINA - RC		100,000	USD	113,000	31.12.04	SRI LANKA RC DIRECT
CHINA - RC		100,000	USD	113,000	31.12.04	INDONESIA RC DIRECT
CHINA - RC		20,000	USD	22,600	31.12.04	MYANMAR RC DIRECT
CHINA - RC		50,000	USD	56,500	31.12.04	INDIA RC DIRECT
CHINA - RC		20,000	USD	22,600	31.12.04	MALDIVES DIRECT
CHINA - RC		20,000	USD	22,600	31.12.04	MALAYSIA RC DIRECT
CHINA - RC		300,000	USD	343,500	28.12.04	
CHINA - PRIVATE DONOR				243	25.01.05	
COOK ISLANDS - RC		39,380	EUR	60,764	13.01.05	
COOK ISLANDS - PRIVATE DONORS		659	EUR	1,016	12.01.05	
CROATIA - RC				1,500,000	30.12.04	INDIA, SRI LANKA, INDONESIA, THAILAND
CYPRUS - RC				26,540	11.01.05	
CZECH REP. - PRIVATE DONORS				3,491	20.01.05	
CZECH REP. - PRIVATE DONOR				54	28.01.05	
DENMARK - PRIVATE DONORS				340	20.01.05	
DENMARK - PRIVATE DONOR		10,000	USD	11,320	18.01.05	
DJIBOUTI - PRIVATE DONOR		5,000	USD	5,660	14.01.05	
ECHO		3,000,000	EUR	4,549,500	26.12.04	
EGYPT - PRIVATE DONORS				141	14.01.05	
ESTONIA - GOVT		500,000	EEK	48,100	28.12.04	
ETHIOPIA - RC		25,000	USD	28,300	04.01.05	SOMALIA, SEYCHELLES
FIDJI - RC		400,000	FJD	276,000	21.01.05	DIRECT CONTRIBUTION TO INDONESIA RC, SRI LANKA RC, INDIA RC, THAILAND RC
FIDJI - GOVT		250,000	FJD	177,400	03.02.05	DIRECT CONTRIBUTION TO INDONESIA RC, SRI LANKA RC, INDIA RC, THAILAND RC
FINLAND - RC		1,575,000	EUR	2,430,225	05.01.05	
FIRST DATA WESTERN UNION FOUND.		1,000,000	USD	1,130,000	31.12.04	PMN to be finalised
FRANCE - PRIVATE DONORS		2,710	EUR	4,182	04.01.05	
FRANCE - PRIVATE DONOR		10,000	USD	11,320	11.01.05	
FRANCE - PRIVATE DONORS				11,492	19.01.05	
FRANCE - RC		1,000,000	EUR	1,543,000	26.01.05	
OECD STAFF MEMBERS		10,000	EUR	15,430	05.01.05	
GERMAN - RC		1,000,000	EUR	1,543,000	18.01.05	
GERMANY - PRIVATE DONORS				21,658	30.12.04	
GERMANY - PRIVATE DONOR		7,750	EUR	11,958	19.01.05	
GREAT BRITAIN - GOVT/RC		400,000	GBP	865,600	30.12.04	INDONESIA
GREAT BRITAIN - DFID		1,177,150	GBP	2,567,364	05.01.05	
GREAT BRITAIN - RC		100,000	GBP	216,400	28.12.04	
GREAT BRITAIN RC				840,642	30.12.04	SRI LANKA TO PURCHASE CLOTHES, MATS, SOAPS
GREAT BRITAIN RC		1,000,000	GBP	2,181,000	25.01.05	
GREAT BRITAIN - PRIVATE DONOR		20,000	EUR	30,860	30.12.04	
GREAT BRITAIN - PRIVATE DONOR		75,000	USD	84,900	07.01.05	
GREAT BRITAIN - PRIVATE DONOR		20,000	USD	22,640	04.01.05	
GREAT BRITAIN - PRIVATE DONOR				2,181	20.01.05	INDONESIA
GREAT BRITAIN - PRIVATE DONORS				19,477	25.01.05	
GREAT BRITAIN - PRIVATE DONOR		10,000	GBP	21,810	24.01.05	
GREAT BRITAIN - CHARITIES AID FOUND.		61,559	GBP	134,261	19.01.05	
HELLENIC - RC		50,000	EUR	75,825	27.12.04	

Asia - Earthquake and Tsunamis

ANNEX 1

APPEAL No. 28/2004

PLEDGES RECEIVED

04/02/2005

DONOR	CATEGORY	QUANTITY	UNIT	VALUE CHF	DATE	COMMENT
HELLENIC - RC		200,000	EUR	308,600	05.01.05	
HELLENIC - PRIVATE DONOR		100	EUR	154	03.01.05	
HELLENIC - PRIVATE DONOR				566	12.01.05	
HELLENIC - PRIVATE DONOR		15,000	USD	16,980	19.01.05	
HUNGARY - PRIVATE DONORS				1,054	24.01.05	
ICELAND - GOVT		5,000,000	ISK	88,000	26.12.04	
ICELAND - RC		12,000,000	ISK	211,200	26.12.04	
IRELAND - GOVT		750,000	EUR	1,155,750	29.12.04	
IRELAND - RC		3,000,000	EUR	4,629,000	31.12.04	
IRELAND - PRIVATE DONOR		10,000	EUR	15,430	06.01.05	
IRELAND - PRIVATE DONORS				455	19.01.05	
IRELAND - PRIVATE DONOR		10,000	USD	11,320	21.01.05	
ITALY - RC		288,615	EUR	444,756	29.12.04	INDIA (EUR 150'000)
ITALIAN - GOVT		103,291	EUR	159,378	20.01.05	SRI LANKA
ITALY - PRIVATE DONORS				1,193	10.01.05	
ITALY - PRIVATE DONOR		10,000	USD	11,320	18.01.05	
ITALY - PRIVATE DONOR		10,000	USD	11,320	19.01.05	
ITALY -PRIVATE DONOR		10,000	USD	11,320	20.01.05	
AUTON. PROVINCE OF BOZEN		25,000	EUR	38,575	20.01.05	
JAPANESE - RC		100,000,000	JPY	1,109,500	28.12.04	
JAPANESE - GOVT		15,000,000	USD	16,980,000	17.01.05	SRI LANKA, INDONESIA, MYANMAR, THAILAND, INDIA, SEYCHELLES, MALDIVES, SOMALIA
JORDAN - PRIVATE DONOR				16,929	04.01.05	
KOREA, REPUBLIC - RC		200,000	USD	226,400	07.01.04	
KOREA, REPUBLIC - RC		500,000	USD	566,000	20.01.05	
KOREA, REPUBLIC - PRIVATE DONOR		13,000	USD	14,716	20.01.05	
KUWAIT - PRIVATE DONOR		1,683	USD	1,905	12.01.05	
LATVIA - RC		28,400	EUR	43,821	13.01.05	
LATVIA - PRIVATE DONOR		20,000	USD	22,640	03.01.05	
LEBANON - PRIVATE DONORS				16,166	13.01.05	
LEBANON - PRIVATE DONOR		10,000	USD	11,320	13.01.05	
LIBYAN - RC				25,000	06.01.05	
LIBYA - PRIVATE DONORS				566	13.01.05	
LIECHTENSTEIN - RC				20,000	29.12.04	
LITHUANIA - RC				21,460	10.01.05	
LUXEMBOURG - GOVT/RC		250,000	EUR	385,750	05.01.05	
MALAYSIA - RC		30,000	USD	34,200	30.12.04	BILATERAL FOR INDONESIA, SRI LANKA, INDIA
MALAYSIA - PRIVATE DONOR		200,000	MYR	60,500	03.01.05	
MALAYSIA - PRIVATE DONOR		2,199	USD	2,490	04.01.05	
MALAYSIA - PRIVATE DONORS				1,500	19.01.05	
MALTA - PRIVATE DONOR		5,000	EUR	5,660	12.01.05	
MALTA - PRIVATE DONOR		14,455	USD	16,363	01.02.05	
MAURITIUS - GOVT		50,000	USD	56,600	13.01.05	
MAURITIUS - PRIVATE DONOR		15,000	USD	16,980	14.01.05	
MEXICO - PRIVATE DONOR		10,000	USD	11,320	14.01.05	
MEXICO - PRIVATE DONOR				762	24.01.05	
MIRCRONESIA - RC		8,286	FJD	5,717	10.01.05	
MONACO - RC		100,000	EUR	151,650	28.12.04	

Asia - Earthquake and Tsunamis

ANNEX 1

APPEAL No. 28/2004

PLEDGES RECEIVED

04/02/2005

DONOR	CATEGORY	QUANTITY	UNIT	VALUE CHF	DATE	COMMENT
MOROCCO - RC		250,000	MAD	36,330	29.12.04	
MOROCCO - PRIVATE DONORS				77	27.01.05	
MOZAMBIQUE - GOVT		100,000	USD	113,200	06.01.05	
MYANMAR - PRIVATE DONOR		10,000	USD	11,320	26.01.05	MYANMAR
MYANMAR - PRIVATE DONOR				1,553	26.01.05	MYANMAR, INDONESIA, THAILAND, INDIA, SRI LANKA
MYANMAR - PRIVATE DONOR		800,850	MMK	143,432	26.01.05	MYANMAR
NETHERLANDS - RC		1,000,000	EUR	1,516,500	29.12.04	
NETHERLANDS - PRIVATE DONORS		2,110	EUR	3,267	05.01.05	
NETHERLANDS - PRIVATE DONOR		10,000	EUR	15,430	12.01.05	
NETHERLANDS - PRIVATE DONOR		50,000	EUR	77,425	31.01.05	
NEW ZEALAND - GOVT		500,000	NZD	406,500	30.12.04	
NEW ZEALAND - GOVT		60,000	NZD	48,840	30.12.04	
NEW ZEALAND - RC		1,900,000	NZD	1,546,600	31.01.05	
NEW ZEALAND - GOVT		1,100,000	NZD	895,400	31.01.05	
NIGERIA - PRIVATE DONOR		10,000	USD	11,320	18.01.05	
NORWEGIAN - GOVT/RC		2,112,664	NOK	395,068	02.01.05	SRI LANKA
NORWAY - GOVT/RC		313,697	NOK	58,661	02.01.05	PROGRAMME SUPPORT/KIND
NORWEGIAN - RC				1,000,000	25.01.05	
NORWEGIAN - PRIVATE DONORS				3,989	12.01.05	
OMAN - PRIVATE DONOR				899	24.01.05	
OPEC FUND		1,200,000	USD	1,374,000	29.12.04	USD 600,000 INDONESIA; USD 200,000 SRI LANKA; USD 200,000 INDIA; USD 100,000 THAILAND; USD 100,000 MALDIVES
PARAGUAY - RC		5,000	USD	5,660	11.01.05	
PANAMA - PRIVATE DONORS		126	USD	143	30.12.04	
PANAMA - PATTON		5,000	USD	5,660	04.01.05	
PNG - SRI LANKAN COMMUNITY		40,683	PGK	15,460	20.01.05	
PHILIPPINES - PRIVATE DONOR		9,985	USD	11,303	03.01.05	SRI LANKA
POLAND - PRIVATE DONOR		200	EUR	309	13.01.05	
PORTUGAL - RC		150,000	EUR	231,450	04.01.05	
PORTUGAL - RC		200,000	EUR	308,600	26.01.05	
PORTUGAL - RC		350,000	EUR	540,050	24.01.05	
PORTUGAL - RC		150,000	EUR	232,275	26.01.05	
PORTUGAL - PRIVATE DONOR		1,000	EUR	1,543	25.01.05	
PRIVATE ON LINE DONATIONS				9,014,000	24.01.05	
QATAR - PRIVATE DONORS				455	13.01.05	
ROMANIA - PRIVATE DONOR		10,000	USD	11,320	18.01.05	
ROMANIA - RC		85,000	EUR	131,155	17.01.05	
RUSSIA - PRIVATE DONOR		961	USD	1,087	28.01.05	
SAMOA - RC				34,651	01.02.05	
SAUDI ARABIA - GOVT		500,000	USD	572,500	30.12.04	INDONESIA
SAUDI ARABIA - GOVT		300,000	USD	343,500	30.12.04	SRI LANKA
SAUDI ARABIA - GOVT		200,000	USD	229,000	30.12.04	THAILAND
SAUDI ARABIA - GOVT		2,000,000	USD	2,290,000	30.12.04	
SAUDI ARABIA - GOVT		200,000	USD	229,000	30.12.04	MALDIVES
SAUDI ARABIA - GOVT		100,000	USD	113,200	30.12.04	SOMALIA
SAUDI ARABIA - GOVT		200,000	USD	229,000	30.12.04	INDIA
SAUDI ARABIA - PRIVATE DONORS				2,995	13.01.05	INDONESIA
SAUDI ARABIA - PRIVATE DONORS				290	13.01.05	SRI LANKA

Asia - Earthquake and Tsunamis

ANNEX 1

APPEAL No. 28/2004

PLEDGES RECEIVED

04/02/2005

DONOR	CATEGORY	QUANTITY	UNIT	VALUE CHF	DATE	COMMENT
SAMOA - RC/ATAFU VILLAGE				34,651	01.02.05	
SINGAPORE - JAPAN TOBACCO INTERN.		30,000	USD	34,350	28.12.04	SRI LANKA, MALDIVES, INDONESIA
SINGAPORE - RC/GOV.		2,000,000	SGD	1,396,600	03.01.05	INDONESIA, SRI LANKA, INDIA, THAILAND, MALDIVES, BANGLADESH, MYANMAR
SLOVAKIA - RC		50,000	SKK	1,925	27.12.04	
SLOVENIA - RC				32,148	30.12.04	
SLOVENIA - RC				257,723	06.01.05	
SLOVENIA - GOVT				55,045	11.01.05	
SOUTH AFRICA - RC		2,500,000	ZAR	488,250	06.01.05	
SOUTH AFRICA - RC		4,000,000	ZAR	785,200	11.01.05	EAST AFRICA, MOB. TABLE
SOUTH AFRICA - RC		3,500,000	ZAR	701,750	10.01.05	EAST AFRICA
SOUTH AFRICA - PRIVATE DONOR		15,126	USD	17,123	20.01.05	
SOUTH AFRICA - PRIVATE DONOR		50,000	USD	56,600	31.01.05	
SPAIN - RC		240,000	EUR	370,536	28.12.04	BILATERAL
SPAIN - RC		100,000	EUR	154,100	29.12.04	
SPAIN - RC		100,000	EUR	154,100	31.12.04	
SPAIN - RC		1,000,000	EUR	1,548,500	28.01.05	
SPAIN - RC		1,000,000	EUR	1,548,500	31.01.05	
SPAIN - PRIVATE DONORS				11,211	12.01.05	
SPAIN - PRIVATE DONOR		18,900	EUR	29,163	17.01.05	
SWEDEN - GOVT/RC		1,250,000	SEK	212,500	28.12.04	
SWEDEN - GOVT/RC		17,000,000	SEK	2,890,000	29.12.04	
SWEDEN - RC		120,000,000	SEK	20,520,000	11.01.05	
SWEDEN - RC		2,000,000	SEK	342,000	11.01.05	
SWEDEN - PRIVATE DONOR		150,000	EUR	231,450	05.01.05	
SWITZERLAND- GOVT/RC				15,938	31.12.04	PROGRAMME SUPPORT/KIND
SWITZERLAND - GOVT/RC				300,000	29.12.04	INDONESIA
SWITZERLAND - PRIVATE DONORS				42,017	05.01.05	
SWITZERLAND - WHO/VERF		5,839	USD	6,700	30.12.04	
SWITZERLAND - PRIVATE DONORS				1,000	30.12.04	INDIA
SWITZERLAND - PRIVATE DONORS				2,000	30.12.04	SRI LANKA
SWITZERLAND - PRIVATE DONOR				10,000	26.01.05	
SWITZERLAND - PRIVATE DONOR		100,000	USD	113,200	28.01.05	
SYRIA - PRIVATE DONOR		10,000	USD	11,320	13.01.05	
THAILAND - PRIVATE DONOR		2,485	USD	2,813	05.01.05	INDONESIA, SRI LANKA
THAILAND - PRIVATE DONOR		1,000,000	THB	29,200	03.01.05	RECEIVED BY REG. DELEGATION
THAILAND - PRIVATE DONORS				691	25.01.05	INDONESIA, RECEIVED BY REG. DELEG.
TAIWAN RED CROSS ORGANISATION		3,000,000	USD	3,409,000	02.01.05	INDONESIA, SRI LANKA, INDIA
TERRACOTTA CORPORATION				1,000,000	04.01.05	
TUNISIA - PRIVATE DONORS				3,086	11.01.05	
TURKISH - RC		40,000	USD	45,280	04.01.05	INDIA, BANGLADESH, MYANMAR, MALAYSIA
UKRAINE - PRIVATE DONORS				1,000	05.01.05	
UKRAINE - PRIVATE DONOR		15,000	USD	16,980	20.01.05	

Asia - Earthquake and Tsunamis

ANNEX 1

APPEAL No. 28/2004

PLEDGES RECEIVED

04/02/2005

DONOR	CATEGORY	QUANTITY	UNIT	VALUE CHF	DATE	COMMENT
UNITED ARAB EMIRATES - PRIVATE DONORS		1,485	USD	1,682	30.12.04	
UNITED ARAB EMIRATES - RC		500,000	USD	572,500	28.12.04	BILATERAL FOR SRI LANKA, PURCHASE OF RELIEF ITEMS
UNITED ARAB EMIRATES - RC		610,000	USD	698,500	28.12.04	BILATERAL FOR INDONESIA, PURCHASE OF RELIEF ITEMS
UNITED ARAB EMIRATES - RC		400,000	USD	458,000	28.12.04	BILATERAL FOR INDIA, PURCHASE OF RELIEF ITEMS
UNITED ARAB EMIRATES - RC		20,000	USD	22,900	27.12.04	
UNITED ARAB EMIRATES - RC		150,000	USD	171,750	28.12.04	MALDIVES
UNITED ARAB EMIRATES - RC		120,000	USD	137,400	28.12.04	BILATERAL FOR THAILAND, PURCHASE OF RELIEF ITEMS
USA - PRIVATE DONORS		1,700	USD	1,924	29.12.04	
USA - PRIVATE DONORS		13,955	USD	15,797	28.12.04	SRI LANKA
USA - PRIVATE DONORS		100,000	USD	113,200	29.12.04	
USA - PRIVATE DONORS		5,000	USD	5,660	31.12.04	
USA - PRIVATE DONOR		50,000	USD	56,600	28.12.04	
USA - PRIVATE DONOR		25,000	USD	28,300	28.12.04	
USA - PRIVATE DONOR		25,000	USD	28,300	29.12.04	
USA - PRIVATE DONOR		25,000	USD	28,300	05.01.05	
USA - PRIVATE DONOR		10,000	USD	11,320	06.01.05	
USA - PRIVATE DONOR		25,000	USD	28,300	07.01.05	
USA - PRIVATE DONOR		10,000	USD	11,320	06.01.05	
USA - PRIVATE DONOR		10,000	USD	11,320	04.01.05	
USA - PRIVATE DONORS				172,000	17.01.05	
USA - PRIVATE DONOR		20,000	USD	22,640	18.01.05	
USA - PRIVATE DONOR		20,000	USD	22,640	20.01.05	
USA - PRIVATE DONOR				113	31.01.05	THAILAND
USA - PRIVATE DONOR				566	31.01.05	INDONESIA
USA - PRIVATE DONOR		100,000	USD	113,200	25.01.05	
USA - PRIVATE DONOR		8,667	USD	9,811	31.01.05	
USAID/OFDA		4,000,000	USD	4,560,000	28.12.04	PMN to be finalised
AMERICAN - RC		5,000,000	USD	5,660,000	13.01.05	INDONESIA: PROCUREMENT, TRANSPORT AND DISTRIBUTION OF EMERGENCY FOOD PARCELS
URUGUAY - PRIVATE DONOR		7,980	USD	9,033	14.01.05	
VENEZUELA - PRIVATE DONOR		10,000	USD	11,320	25.01.05	
VIRGIN ISLANDS - PRIVATE DONOR				6,000	07.01.05	
VODAPHONE GROUP FOUNDATION		250,000	GBP	545,250	30.12.04	
SUB/TOTAL RECEIVED IN CASH				176,435,070	CHF	96.2%

KIND AND SERVICES (INCLUDING PERSONNEL)

DONOR	CATEGORY	QUANTITY	UNIT	VALUE CHF	DATE	COMMENT
AUSTRALIA RC	FACT	3	12,000	36,000	27.12.04	PMN to be finalised
AUSTRIA RC	ERU	750,000	EUR	1,161,375	17.01.05	DIRECT ASSISTANCE INDONESIA: "WATER DISTRIBUTION & TRUCKING, SPECIALISED WATER

Asia - Earthquake and Tsunamis

ANNEX 1

APPEAL No. 28/2004

PLEDGES RECEIVED

04/02/2005

DONOR	CATEGORY	QUANTITY	UNIT	VALUE CHF	DATE	COMMENT
BELGIUM - RC/GOVT		218,560	EUR	337,238	31.12.04	500 FAMILY TENTS, 10'600 JERRYCANS (10), 10'200 JERRYCANS (20) - FOR SRI LANKA
BELGIUM - RC		297,917	EUR	459,686	12.01.05	JERRYCANS, BED SHEETS, SOCCER BALLS, PLASTIC BAGS, BULBS, TORCHES, BATTERIES, ELECTRIC EQUIPMENT, GENERATORS
CANADA RC	FACT	2	12,000	24,000	27.12.04	PMN to be finalised
DENMARK RC	FACT	2	12,000	24,000	27.12.04	PMN to be finalised
DENMARK RC	ERU LOGISTICS	1		250,000	27.12.04	PMN to be finalised, value Danish RC
FINLAND RC	ERU HEALTH	1		512,000	27.12.04	PMN to be finalised, estimated value
FRANCE RC	ERU HEALTH	1		465,000	27.12.04	PMN to be finalised, estimated value
FRANCE RC	ERU WATSAN	1		465,000	30.12.04	PMN to be finalised, estimated value
FRANCE RC	FACT	2	12,000	24,000	27.12.04	PMN to be finalised
GERMANY RC	FACT	2	12,000	24,000	27.12.04	PMN to be finalised
GERMANY RC	ERU WATSAN + ERU HEALTH	1,475,000	EUR	2,275,925	30.12.04	2 ERU HEALTH & WATER EQUIPMENT + VEHICLES + TPT - DIRECT ASSISTANCE INDONESIA
GERMANY RC	ERU WATSAN	646,000	EUR	996,778	30.12.04	ERU WATER/SANITATION EQUIPMENT + VEHICLES + TPT - DIRECT ASSISTANCE SRI LANKA
GERMANY RC	HYGIENE + BAGS	89,600	EUR	138,253	02.01.05	SRI LANKA - DIRECT ASSISTANCE : HYGIENE PACKS, BODY BAGS
GERMANY - RC		170,540	EUR	263,143	03.01.05	SRI LANKA - DIRECT ASSISTANCE : JERRYCANS, KITCHEN SETS, BEDSHEETS
GERMANY - RC		348,535	EUR	537,789	16.01.05	INDONESIA - DIRECT ASSISTANCE: BABYPACKS (PER MOB. TABLE), BLANKETS, STORM LANTERNS
GERMANY - RC		11,950	EUR	18,438	16.01.05	SRI LANKA - DIRECT ASSISTANCE : 5000 JERRYCANS
GREAT BRITAIN RC	FACT	2	15,756	34,364	10.01.05	FACT TEAM + EQUIPMENT, MALDIVES DIRECT ASSISTANCE
GREAT BRITAIN RC		241,039	GBP	525,706	28.12.04	ERU TEAM & EQUIPMENT SRI LANKA - DIRECT ASSISTANCE
GREAT BRITAIN RC		14,100	GBP	30,752	29.12.04	REHABILITATION TEAM + EQUIPMENT. DIRECT ASSISTANCE
GREAT BRITAIN RC		574,380	GBP	1,252,723	04.01.05	INDONESIA: VEHICLES, TARPAULINS, BLANKETS, RUBHALLS
GREAT BRITAIN RC		328,489	GBP	716,434	04.01.05	MALDIVES: GENERATORS, HYGIENE KITS, RUBHALLS, MEDICAL EQUIPMENT
IRAN RC	RELIEF ITEMS	672,000	USD	759,360	31.12.04	PMN to be finalised
JAPAN RC	FACT	1	12,000	12,000	27.12.04	PMN to be finalised
JAPAN RC	ERU HEALTH	1		512,000	27.12.04	PMN to be finalised, estimated value
KOREA REP. RC	BLANKETS	90,000	USD	102,600	28.12.04	BILATERAL
KUWAIT - RC					28.12.04	BILATERAL FOR SRI LANKA: 3500 PCES BLANKETS, 500 PCES KEROSENE LAMPS, 1000 PCES FOOD CANS, 1'095 CART. FOOD
NEW ZEALAND RC	FACT	1	12,000	12,000	27.12.04	PMN to be finalised
NORWAY RC	ERU HEALTH	1		515,000	27.12.04	PMN to be finalised, estimated value
NORWAY RC			NOK	3,330,000	30.12.04	PMN to be finalised - JERRY CANS, TENTS, RUB HALLS, BLANKETS + TPT & INSURANCES

Asia - Earthquake and Tsunamis

ANNEX 1

APPEAL No. 28/2004

PLEDGES RECEIVED

04/02/2005

DONOR	CATEGORY	QUANTITY	UNIT	VALUE CHF	DATE	COMMENT
NORWAY - GOVT/RC		7,399,801	NOK	1,383,763	02.01.05	JERRY CANS, FAMILY TENTS, RUBHALLS, BODYBAGS, TOYOTA, WATER PURIFICATION
SAUDI ARABIA		USD	2,000,000	2,264,000	30.12.04	INDONESIA VARIOUS SUPPLIES DIRECT
SAUDI ARABIA		USD	800,000	905,000	30.12.04	THAILAND VARIOUS SUPPLIES DIRECT
SAUDI ARABIA		USD	1,200,000	1,358,000	30.12.04	SRI LANKA VARIOUS SUPPLIES DIRECT
SAUDI ARABIA		USD	500,000	566,000	30.12.04	MALDIVES VARIOUS SUPPLIES DIRECT
SPAIN RC	ERU TELECOM	1		155,000	27.12.04	PMN to be finalised, estimated value
SPAIN RC	FACT	1	12,000	12,000	27.12.04	PMN to be finalised
SPAIN RC	ERU WATSAN			440,000	30.12.04	PMN to be finalised, estimated value
SWEDEN RC	ERU WATSAN	1,400,000	SEK	239,000	27.12.04	PMN to be finalised, value Swedish RC
SWEDEN	DELEGATES			24,400		
SWITZERLAND - RC/GOVT				305,200	31.12.04	SRI LANKA - KITCHEN SETS, SHEETING, TARPULINS, LANTERNS
UNITED ARAB EMIRATES - RC		41,625	USD	47,661	28.12.04	BILATERAL FOR SRI LANKA: BLANKETS, CLOTHES
USA AMCROSS	FACT	2	12,000	24,000	27.12.04	PMN to be finalised
USA AMCROSS	RELIEF TEAM	1		114,000	30.12.04	INDONESIA
USA AMCROSS	ERU RELIEF	1		171,000	30.12.04	SRI KANKA
SUB/TOTAL RECEIVED IN KIND/SERVICES				21,117,855	CHF	11.5%

ADDITIONAL TO APPEAL BUDGET

DONOR	CATEGORY	QUANTITY	UNIT	VALUE CHF	DATE	COMMENT
AUSTRIA RC	SUPPORT TEAMS	142,103	EUR	219,265	03.01.05	
AUSTRIA RC		700,000	EUR	1,080,100	03.01.05	2 TRANSPORTS 60 MT.MEDICAL RELIEF GOODS & MEDICAMENTS
SUB/TOTAL RECEIVED				1,299,365	CHF	